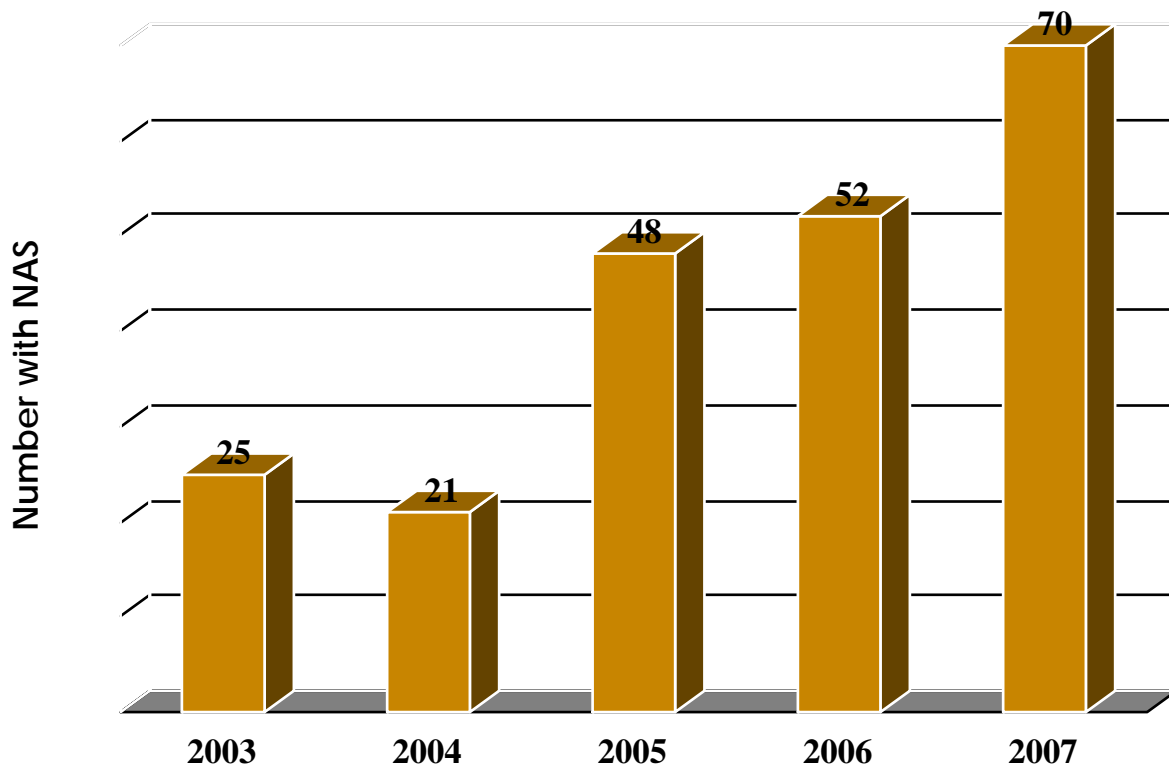


## Prevalence of Drug Use in Pregnant West Virginia Patients.

David Chaffin, MD and Robert Nerhood, MD  
Joan C Edwards School of Medicine at Marshall University

### Introduction

The prevalence of drug use in any population is essential to those planning, funding and testing interventions to address that incidence. However, accurate ascertainment can be difficult. There is actually a paucity of reliable information in the literature on the use of illicit drugs in pregnancy with rates reported from 10 to 14%. The prevalence appears to be increasing based on increasing numbers of infants diagnosed with neonatal abstinence syndrome (NAS); the number of cases at Cabell-Huntington Hospital tripling from 2003 to 2007 (reference 1).



As the average cost of infants diagnosed with NAS is \$36,000 as opposed to \$2,000, this represents a fiscal as well as medical and social nightmare. Just how big is the problem is the question this study was designed to answer.

Research methods using survey questionnaires will tend to underestimate the prevalence, as will methodologies requiring consent. To date the most reliable reports have used anonymous testing of meconium passed by the neonate. However, this too will

underestimate the prevalence as some neonates fail to pass the meconium prior to discharge, and some do not pass enough for accurate testing.

This study was conceived to provide the state of West Virginia an accurate snapshot of the prevalence of drug use in her pregnant population. Enough hospitals would be recruited from around the state to a) provide a large enough population of deliveries (1000) in a suitably short time frame (1 month) and b) provide enough geographic diversity to be able to discern regional variations.

Anonymous testing avoids ascertainment bias as ALL of the patients in the delivering in the specified time frame will be tested. To ensure anonymity, no personal information was to be obtained. The current study was designed to use the most recent technology of testing the tissue of the umbilical cord for drug metabolites. Initially a custom 7 drug panel was designed by United States Drug Testing Laboratory (USDTL) (see appendix 1), and offered at a 50% discount over standard clinical rates. The drugs chosen represented those most often seen clinically and include:

- Methamphetamine
- Cocaine
- Cannabinoids
- Opiates
- Methadone
- Benzodiazapines
- Buprenorphine

Originally not enough money was available to also test for alcohol. However, savings in the area of specimen collection ultimately allowed for each cord specimen to be tested for a long persisting metabolite of alcohol, phosphatidylethanol.

## **MATERIALS AND METHODS**

The project, multi-hospital anonymous collection and assay of umbilical cord segments in as many patients as delivered in the month of August 2009, was approved by the Joan C. Edwards School of Medicine Institutional Review Board (IRB) and subsequently sent to 11 hospitals for their review and approval. Ultimately, 8 hospitals agreed to participate:

- Bluefield Regional Medical Center (BRMC)
- Raleigh General Hospital (RGH)
- Thomas Memorial Hospital (TMH)
- Charleston Area Medical Center (CAMC)
- Cabell Huntington Hospital (CHH)
- Ruby Memorial Hospital (RMH)
- Wheeling Hospital (WH)
- City Hospital Martinsburg (CH)

Each hospital was provided with a specimen freezer and specimen collection supplies. The goal was to collect a 6-9inch segment of cord from EVERY delivery. Arrangements were made for the specimens to be boxed and shipped to USDTL at least weekly, semi-weekly from the busier hospitals.

## RESULTS

Seven hundred fifty nine (759) samples were ultimately delivered to USDTL for analysis. The complete raw results are in Appendix 2, and arranged for analysis in Appendix 3. The regional breakdown is as follows:

Hospital	Number	% of Total
BRMC	50	6.6
RGH	83	10.9
TMH	59	7.8
CAMC	133	17.5
CHH	245	32.2
RMH	52	6.9
WH	65	8.6
CH	72	9.5

There were 146 cord specimens found to be positive for drugs and/or alcohol.

Drug Class	Number	% of Positives (146)	% of population (759)
Amphetamines	1	<1	<<1
Cocaines	0	0	0
Opiates	41	28	5.4
Cannabinoids	58	40	7.6
Benzodiazapines	17	12	2.2
Methadone	14	10	1.8
Buprenorphine	0	0	0
Alcohol	39	27	5.1

Polypharmacy was also common:

Of patients using:	% also using:				
	Opiates	Cannabinoids	Benzos	Methadone	Alcohol
Opiates		12	12	7	7
Cannabinoids	8		5	3	7
Benzos	29	17		11	6
Methadone	21	14	14		14
Alcohol	7	10	2	5	

Regional distribution of drug and alcohol use also varied:

<b>Hospital</b>	<b>Drugs %</b>	<b>Alcohol %</b>
BRMC	14	4
RGH	19	2
TMH	10	8
CAMC	16	8
CHH	17	1
RMH	13	4
WH	12	15
CH	10	5

## **Discussion**

Nineteen percent, almost one in five babies born during this period in these 8 diverse West Virginia hospitals had evidence of drug or alcohol exposure. Marijuana use led the way followed by opiates, alcohol, benzodiazepines and methadone. The lack of finding methamphetamine or cocaine is surprising. Diversion of buprenorphine (an alternative opiate maintenance drug found in Suboxone and Subutex) does not seem to be a major problem at present. There are regional variations which may be important when targeting interventions, and the incidence of alcohol use, the only proven teratogen, in the northern panhandle is surprising as well.

This study provides an upper limit to the problem. Some of the opiate, and possibly some of the benzodiazapine use may have been under a physician's care. It is unknown how much of the methadone use was illicit versus legal care at an opiate maintenance center. There is also the possibility of affected infants being transported in from neighboring states for NICU care at the three tertiary care centers in the state. Finally, although all births were supposed to be tested, one might theorize a subtle bias to making sure that a patient who fit a preconceived image of a "drug user" would be more likely to have the cord sampled.

## **Reference**

Baxter, FR, Nerhood R, Chaffin DG. Characterization of babies discharged from Cabell Huntington Hospital during the calendar year 2005 with the diagnosis of neonatal abstinence syndrome. West Virginia Medical Journal 2009;105:16-21.

This project was supported by the West Virginia Department of Health and Human Resources, Bureau for Public Health, Office of Maternal, Child and Family Health, with federal Maternal and Child Health Block Grant funds.



**UNITED STATES DRUG TESTING LABORATORIES**  
1700 SOUTH MOUNT PROSPECT ROAD  
DES PLAINES, ILLINOIS 60018  
(847) 375-0770 PHONE (847) 375-0775 FAX  
WWW.USDTL.COM

## RESEARCH INFORMATION FOR:

To view a short presentation about USDTL click here--<http://www.usdtl.com/howeare.html>

# SEVEN DRUG PANEL IN HUMAN UMBILICAL CORD

PREPARED FOR:

**David Chaffin, MD**

Marshall University Research Corporation  
Marshall University Medical Center  
1600 Medical Center Drive  
Huntington, West Virginia 25701  
chaffind@marshall.edu



**UNITED STATES DRUG TESTING LABORATORIES**  
1700 SOUTH MOUNT PROSPECT ROAD  
DES PLAINES, ILLINOIS 60018  
(847) 375-0770 PHONE (847) 375-0775 FAX  
WWW.USDTL.COM

## SEVEN DRUG PANEL IN UMBILICAL CORD

To view a short presentation about USDTL click here--<http://www.usdtl.com/whoware.html>

### Table of Contents

- 1. Umbilical Cord**
- 2. Cord Collection Procedure**
- 3. Cord 7-Panel Initial Test**
- 4. Elisa Kits**
- 5. Tecan MiniPrep 75**
- 6. Tecan Sunrise Microplate Reader**
- 7. Confirmation Assays**
- 8. SPE Column**
- 9. Hewlett-Packard 5973**
- 10. GC Column Configuration**
- 11. API 3200 LCMSMS**
- 12. LC Column**
- 13. Results**

Attachment A. Immunoassay Package Inserts



**UNITED STATES DRUG TESTING LABORATORIES**  
1700 SOUTH MOUNT PROSPECT ROAD  
DES PLAINES, ILLINOIS 60018  
(847) 375-0770 PHONE (847) 375-0775 FAX  
WWW.USDTL.COM

## **1. Umbilical Cord**

Excerpt from manuscript in Press [1].

Because of its lengthy window of detection and relative ease of collection, meconium, the first fecal material passed by a newborn, has been the testing matrix of choice for identifying newborns that have been exposed to drugs and alcohol *in utero* for the past two decades [2-5]. Meconium testing has two distinct disadvantages. First, some newborns may not pass their meconium for several days, therefore increasing undesirable turn-around-time and cost. Secondly, 10-15% of newborns pass their meconium in utero because of fetal stress [6]. As one cause of fetal stress is exposure to drugs and alcohol in the womb, identification of drug and alcohol exposure for this group is of great importance [7-8].

UC, formed from fetal origins during the first five weeks of gestation, is a tether protecting the vessels that connect the fetus to the placenta [9-11]. UC has several distinct advantages over meconium as a specimen for drug testing newborns [3,12]. UC is available for testing immediately after birth. The specimen is in route to the lab while the newborn is passing meconium. All newborns have sufficient UC for testing, while the most prevalent reason for meconium specimen rejection is due to insufficient quantity of specimen. UC collection has a single step procedure, whereas meconium collection may have up to 6-7 cumulative collections by multiple collectors and with multiple donors in the near vicinity. Because the UC collection procedure has a single donor and a single collector present the integrity of the specimen's chain of custody is greatly improved.



## UNITED STATES DRUG TESTING LABORATORIES

1700 SOUTH MOUNT PROSPECT ROAD  
DES PLAINES, ILLINOIS 60018  
(847) 375-0770 PHONE (847) 375-0775 FAX  
WWW.USDTL.COM

The detection of cocaine and metabolites in UC has been previously described in the literature [13-14]. In 2003, the detection of drug metabolite in UC was used to provide evidence of a mother's drug history during pregnancy [15]. The interpretation that the detection of benzoylecgonine in UC was proof of cocaine use by the mother during pregnancy was upheld on appeal to the South Carolina Supreme Court [16]. The detection of buprenorphine and metabolites was recently reported in UC [12]. A recently published study indicated that immunoassay testing performed on UC demonstrated excellent agreement with matched meconium pairs [17].

- [1] J. Jones, R. Rios, M. Jones, D. Lewis, and C. Plate. *J. Chrom. B.* (in Press).
- [2] J. Gareri, J. Klein, G. Koren, *Clin. Chim. Acta.* 366 (2005) 101.
- [3] T. Gray, M. Huestis, *Anal Bioanal Chem.* 388 (2007) 1455.
- [4] M. Huestis, R. Choo, *For. Sci. Int.* 128 (2002) 20.
- [5] C. Moore, A. Negrusz, D. Lewis, *J. Chrom. B.* 713 (1998) 137.
- [6] J. Kinsella, *Am. J. Respir. Crit. Care Med.* 168 (2003) 413.
- [7] M. Armstrong, V Osejo, L. Lieberman, D. Carpenter, P. Pantoja, G. Escobar, *J Perinatol.* 23 (2003) 3.
- [8] S. Velaphi, D. Vidyasagar, *Clinics in Perinatology.* 33-1 (2006) 29.
- [9] C. Blakemore, S. Jennett, Eds., *The Oxford Companion to the Body*, Oxford University Press, New York, 1st Edition, 2001, p. 700.
- [10] B. Pansky, *Dynamic Anatomy and Physiology*, Macmillan Publishing Company, New York, 1975, p. 619.
- [11] P. Williams, R. Warwick, M Dyson, L Bannister, Eds., *Gray's Anatomy*, Churchill Livingstone, New York, 37th Edition, 1989, p. 143.
- [12] M. Concheiro, D. Sheakleya, M. Huestis, *For. Sci. Int.* 188 (2009) 144.
- [13] C. Moore, S. Brown, A. Negrusz, I. Tebbett, W. Meyer, L. Jain, *J. Anal. Tox.* 17 (1993) 62.
- [14] R. Winecker, B. Goldberger, I. Tebbett, M. Behnke, F. Eyler, M. Conlon, K. Wobie, J. Karlix, R. Bertholf, *J. Anal. Tox.* 21 (1997) 97.
- [15] *State v. McKnight*, 352 S.C. 635, 576 S.E.2d 168 (2003).
- [16] *McKnight v. State*, No. 26484 (SC, 2008).
- [17] D. Montgomery, C. Plate, S. Alder, M. Jones, J. Jones, R. Christensen, *J. Perinatol.* 26 (2006) 11.





**UNITED STATES DRUG TESTING LABORATORIES**  
1700 SOUTH MOUNT PROSPECT ROAD  
DES PLAINES, ILLINOIS 60018  
(847) 375-0770 PHONE (847) 375-0775 FAX  
WWW.USDTL.COM

## 2. Umbilical Cord Collection Procedure

Click below to view collection training video:

[http://www.usdtl.com/downloads/ucord\\_collection\\_training\\_071809.wmv](http://www.usdtl.com/downloads/ucord_collection_training_071809.wmv)

### CordStat<sup>SM</sup> collection instructions

1. Place name and I.D. number on the United States Drug Testing Laboratories (USDTL) requisition form and umbilical cord container.
2. Cut a 6-inch to 8-inch segment of the umbilical cord and drain and discard any blood.
3. Rinse the cord segment exterior with normal saline or an equivalent rinsing solution. **Important: avoid any contact of ethanol liquid or vapor with the umbilical cord.**
4. Place the umbilical cord segment into the umbilical cord container and sign the requisition form.
5. Place the barcode sticker from the requisition form over the top of the matching umbilical cord container.
6. Place the completed requisition form with tests ordered in the large pouch of the plastic specimen bag provided.
7. Place the umbilical cord container in the small pouch of the specimen and seal the bag.
8. Place the specimen bag in the cardboard box, close the box, affix the box seal at the indicated place and initial the seal.
9. Contact your courier for pick-up or UPS at (800) PICKUPS (748-5877). **Umbilical cord specimens should be refrigerated in a secure area until they are ready to be shipped.**
10. For more information on umbilical cord collection, visit [www.usdtl.com](http://www.usdtl.com) and watch our CordStat<sup>SM</sup> collection tutorial.



1700 South Mount Prospect Road | Des Plaines, IL 60018 | (800) 235-2367 | [www.usdtl.com](http://www.usdtl.com)



**UNITED STATES DRUG TESTING LABORATORIES**  
1700 SOUTH MOUNT PROSPECT ROAD  
DES PLAINES, ILLINOIS 60018  
(847) 375-0770 PHONE (847) 375-0775 FAX  
WWW.USDTL.COM

### 3. MURC7 Profile

The MURC7 is a custom profile created to fulfill the requirements of the service agreement between USDTL and MURC dated July 2, 2009. The custom drug profile included Amphetamines, Cocaines, Opiates, Marijuana, Benzodiazepines, Methadones and Buprenorphines. All drug classes were initially tested by immunoassay using a **Tecan MiniPrep75** and **Tecan Sunrise Microplate Reader**. Presumptive positives were confirmed using an appropriate mass spectrometric (MS) assay except for buprenorphines, which was screened using liquid chromatography-tandem mass spectrometry (LCMSMS).

The Enzyme-Linked ImmunoSorbent Assay (ELISA) is a specific and sensitive test, designed to detect drugs in biological specimens. The assay is based upon the competitive binding to antibody of enzyme-labeled antigen and unlabeled antigen, in proportion to their concentration in the reaction mixture. An aliquot of prepared sample is incubated with a dilution of enzyme-(Horseradish peroxidase) labeled drug derivative in micro-plate wells, coated with fixed amounts of oriented high affinity purified antibody. The wells are washed thoroughly and a chromogenic substrate is added. The reaction producing a color is stopped using a dilute acid stop solution and the wells are read at a wavelength of 450 nm. The intensity of the color is inversely proportional to the concentration of drug in the sample. The degree of absorbance is measured instrumentally with either manual or automated reading.

<b><u>Drug Class</u></b>	<b><u>Initial Test Method</u></b>	<b><u>Cutoff</u></b>
Amphetamines	ELISA	5.0 ng/g
Cocaines	ELISA	2.0 ng/g
Opiates	ELISA	2.0 ng/g
Cannabinoids	ELISA	100 pg/g
Benzodiazepines	ELISA	2.0 ng/g
Methadones	ELISA	2.0 ng/g
Buprenorphines	LCMSMS	2.0 ng/g



## UNITED STATES DRUG TESTING LABORATORIES

1700 SOUTH MOUNT PROSPECT ROAD  
DES PLAINES, ILLINOIS 60018  
(847) 375-0770 PHONE (847) 375-0775 FAX  
WWW.USDTL.COM

### 4. IMMUNOASSAY KITS

- Methamphetamine One-Step Elisa, International Diagnostic, St. Joseph, MI.
- Benzoyllecgonine Specific Direct Elisa Kit, Immunalysis Corporation, Pomona, CA.
- Opiates Direct Elisa Kit, Immunalysis Corporation, Pomona, CA.
- THC One-Step Elisa, International Diagnostic, St. Joseph, MI.
- Benzodiazepine Direct Elisa Kit, Immunalysis Corporation, Pomona, CA.
- Methadone Direct Elisa Kit, Immunalysis Corporation, Pomona, CA.

Package inserts are included in Appendix A.



IDS THC One-Step ELISA

<http://www.ids-kits.com/drugm.html>



<http://www.immunalysis.com/Tech Briefs.htm>

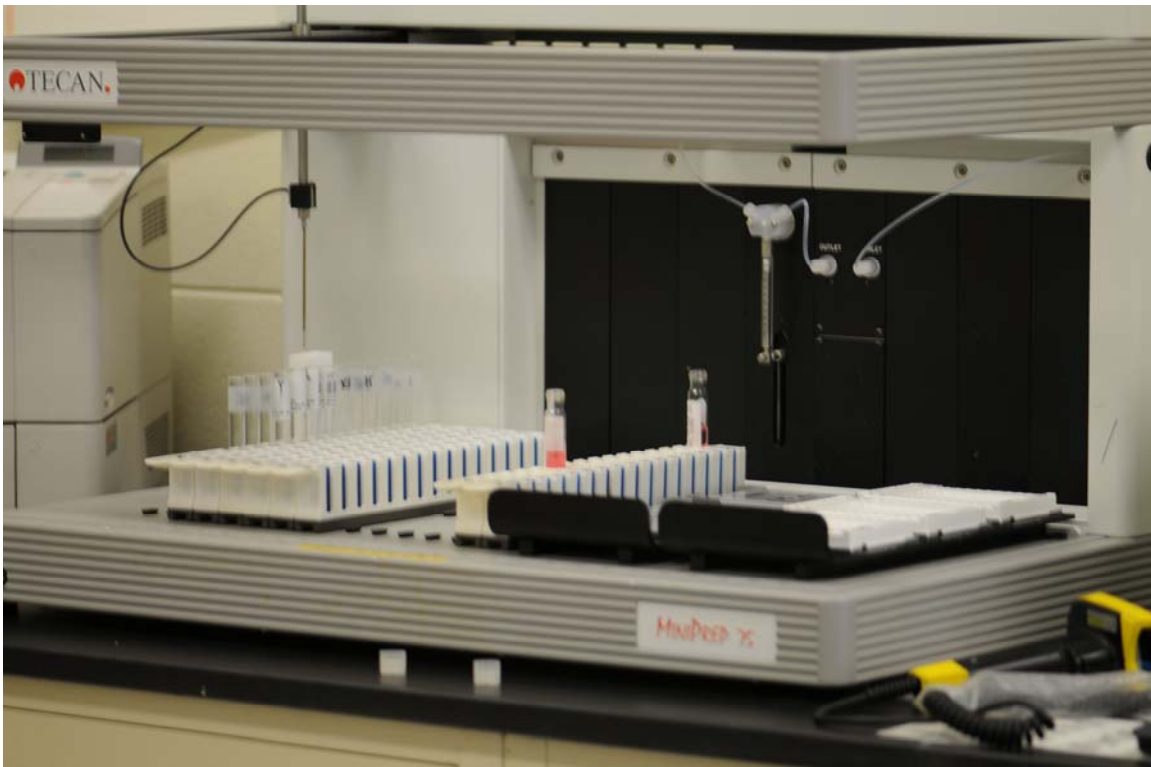


## UNITED STATES DRUG TESTING LABORATORIES

1700 SOUTH MOUNT PROSPECT ROAD  
DES PLAINES, ILLINOIS 60018  
(847) 375-0770 PHONE (847) 375-0775 FAX  
WWW.USDTL.COM

### 5. **Tecan MiniPrep 75**

Tecan's MiniPrep sample preparation robots offer automation solutions for the research laboratory, where consistent results are vital and bench space is limited. The MiniPrep is designed to take on the challenges of reproducible pipetting and dispensing of volumes including sub-microliter. It also handles a variety of sample containers including troughs, tubes, and 96 or 384-well microtiter plates.



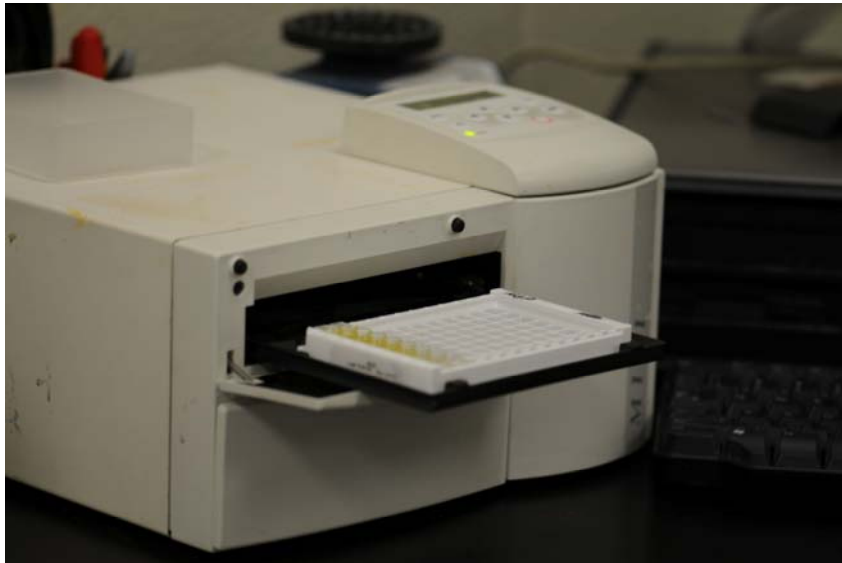


## UNITED STATES DRUG TESTING LABORATORIES

1700 SOUTH MOUNT PROSPECT ROAD  
DES PLAINES, ILLINOIS 60018  
(847) 375-0770 PHONE (847) 375-0775 FAX  
WWW.USDTL.COM

### 6. **Tecan Sunrise Microplate Reader**

The Tecan Sunrise Microplate Reader is a versatile microplate absorbance reader for 96-well plates providing all the functionality needed for the numerous applications in diagnostics, biotechnology and research laboratories. A set of options such as temperature control up to 42°C, a gradient filter for wavelengths scanning and a barcode scanner allow customizing the Sunrise to your application needs.





## UNITED STATES DRUG TESTING LABORATORIES

1700 SOUTH MOUNT PROSPECT ROAD  
DES PLAINES, ILLINOIS 60018  
(847) 375-0770 PHONE (847) 375-0775 FAX  
WWW.USDTL.COM

### 7. Confirmation Assays

A positive UC test may ultimately lead to intervention by social services, which could include litigation, forced rehabilitation and/or loss of parental rights. Due to the severity of the consequences, a reliable confirmation method that exhibits a high degree of specificity, such as LCMSMS and GCGCMS, is required for UC to be considered as an adequate alternative matrix for newborn drug screening.

The confirmation methods used to confirm the immunoassay initial tests utilized Liquid Chromatography Tandem Mass Spectrometry (LCMSMS) for the Amphetamines, Cocaines, Opiates, Benzodiazepines, and Methadones. Due the increased sensitivity requirement, the confirmation method for Cannabinoids utilized Two Dimensional Gas Chromatography Mass Spectrometry (GCGCMS). The procedures entailed isotopic dilution with each analyte's corresponding deuterated analog, homogenizing 1g aliquots of UC in acetonitrile followed by standard **Solid Phase Extraction (SPE)** procedures. Each batch contained an extracted Calibration Standard, extracted controls (Low, Mid, High), an extracted negative control and an unextracted Retention Time Standard.

<u>Drug Class</u>	<u>Analyte</u>	<u>Method</u>	<u>Cutoff</u>
Amphetamines	Amphetamine	LCMSMS	1.0 ng/g
	Methamphetamine		
	MDA		
	MDMA		
	MDEA		
Cocaines	Benzoylcegonine	LCMSMS	1.0 ng/g
Opiates	Codeine	LCMSMS	2.0 ng/g
	Morphine		
	Hydrocodone		
	Hydromorphone		
	6-MAM		
Cannabinoids	Carboxy-THC (THCA)	GCGCMS	50 pg/g
Methadones	Methadone	LCMSMS	2.0 ng/g
	EDDP		
Benzodiazepines	Diazepam	LCMSMS	2.0 ng/g
	Nordiazepam		
	Oxazepam		
	Temazepam		
	Alprazolam		
Buprenorphines	Midazolam	LCMSMS	2.0 ng/g
	Buprenorphine		
	Norbuprenorphine		



## UNITED STATES DRUG TESTING LABORATORIES

1700 SOUTH MOUNT PROSPECT ROAD  
DES PLAINES, ILLINOIS 60018  
(847) 375-0770 PHONE (847) 375-0775 FAX  
WWW.USDTL.COM

### 8. Solid Phase Extraction (SPE) Column

Traditionally, liquid-liquid extraction has been the method commonly used for drug testing. As the demand for drug testing has increased Solid Phase Extraction (SPE) has become an increasingly popular technique. SPE offers several advantages over liquid-liquid extraction in that it is more rapid, economical, safe and efficient. In addition, a recent report has demonstrated that extracts of SPE cause less and slower contamination of the MS system than those of liquid-liquid extraction. (#)

Solid phase extraction is a physical extraction process that involves a solid phase and a liquid phase. The most widely used SPE materials are silica or bonded silica gels, in which the end-standing silanol groups have been derivatized with an organic moiety. These moieties may consist of alkyl chains with or without a variety of functional groups such as -OH, -C<sub>6</sub>H<sub>5</sub>, -NH<sub>2</sub>, CN, -SO<sub>3</sub>H, and -COOH. (#)

The UCT CSDAU 200mg/ml SPE column is copolymerized on a rigid purified silica gel support. The two functional Aminopropyl groups include a reverse phase, and an ion exchanger, benzenesulfonic acid. This column is commonly used for analyzing a wide range of drugs of abuse, including acidic, basic & neutral drugs. (\*)

# Handbook of Workplace Drug Testing, Eds. R. Liu and B Goldberger. AACC Press. Washington, DC. 1995.

\* Marketing material copied from unitedchem.com.





**UNITED STATES DRUG TESTING LABORATORIES**  
1700 SOUTH MOUNT PROSPECT ROAD  
DES PLAINES, ILLINOIS 60018  
(847) 375-0770 PHONE (847) 375-0775 FAX  
WWW.USDTL.COM

## **9. AGILENT 6890 GAS CHROMATOGRAPH AND 5973 MASS SELECTIVE DETECTOR**

The Agilent 5973N GC/MS combines outstanding performance with exceptional instrument flexibility, providing the lowest cost of ownership for a standard diffusion pump vacuum system with electron ionization.

The Agilent GC/MSD quadrupole is unlike any other quadrupole—a revolutionary breakthrough for quadrupole mass spectrometry.

The design

Produced using a combination of Agilent patented and proprietary technologies, the quadrupole features:

- A uniquely engineered monolithic quartz structure defining a true hyperbolic form. Quartz has one of the lowest thermal expansions of all materials available, yielding excellent dimensional stability across a large temperature range.
- Hyperbolic electrode surfaces, developed from semiconductor metallization technology. Multilayers of titanium-composite and gold thin and thick films, the gold conductors have excellent electrical conductivity without undesirable oxidation typical of metal quadrupoles. This means minimal cleaning. Unrivaled performance. This unique quadrupole is the ideal hyperbolic design.

- Ensures lower field errors than associated with round rod quadrupoles.
- Provides the best possible transmission while maintaining resolution across the full mass range.

A uniquely engineered monolithic quadrupole

Compact analyzer design for easy access

The 5973N GC/MS system — designed for reliable results

- Self-aligning Automatic Liquid Sampler (ALS) – Ensures correct installation without alignment calibration
- Intelligent GC pneumatics – Agilent’s Electronic Pneumatics Control (EPC) automatically selects the correct pressure mode for superior split and splitless performance • True hyperbolic quadrupole – Eliminates the need for complicated prefilters
- Thermally stable quartz quadrupole – The proprietary quadrupole can be heated up to 200 °C for minimal cleaning and low background.
- Quick-replace electron multiplier horn – Off-axis high-energy dynode (HED) detector ensures long life and ultimate sensitivity
- Automated maintenance notifications – Early maintenance feedback (EMF) alerts you to routine maintenance tasks before your results are compromised
- 0.10 amu mass axis stability over 48 hours – Ensures longer lasting tune and calibration stability
- Mass flow control for CI reagent gas
- Scan rates up to 10,000 amu/sec
- Electron impact ionization with standard CI ion source
- 21 CFR Part 11-compliant software – MSD Security ChemStation software complies with all 21 CFR Part 11 regulatory requirements.





## UNITED STATES DRUG TESTING LABORATORIES

1700 SOUTH MOUNT PROSPECT ROAD  
DES PLAINES, ILLINOIS 60018  
(847) 375-0770 PHONE (847) 375-0775 FAX  
WWW.USDTL.COM

- Industry-standard regulatory reporting – ChemStation report packages help you comply with environmental and drug testing regulations

Complete access to the ion source, mass analyzer and electron multiplier in less than 2 minutes—without tools. Best-selling 6890N GC with precise temperature and pneumatics control for unsurpassed retention time reproducibility.

7683 automatic liquid sampler (or other sample introduction devices) for increased productivity.

5973N MSD entry-level diffusion pump electron ionization MSD

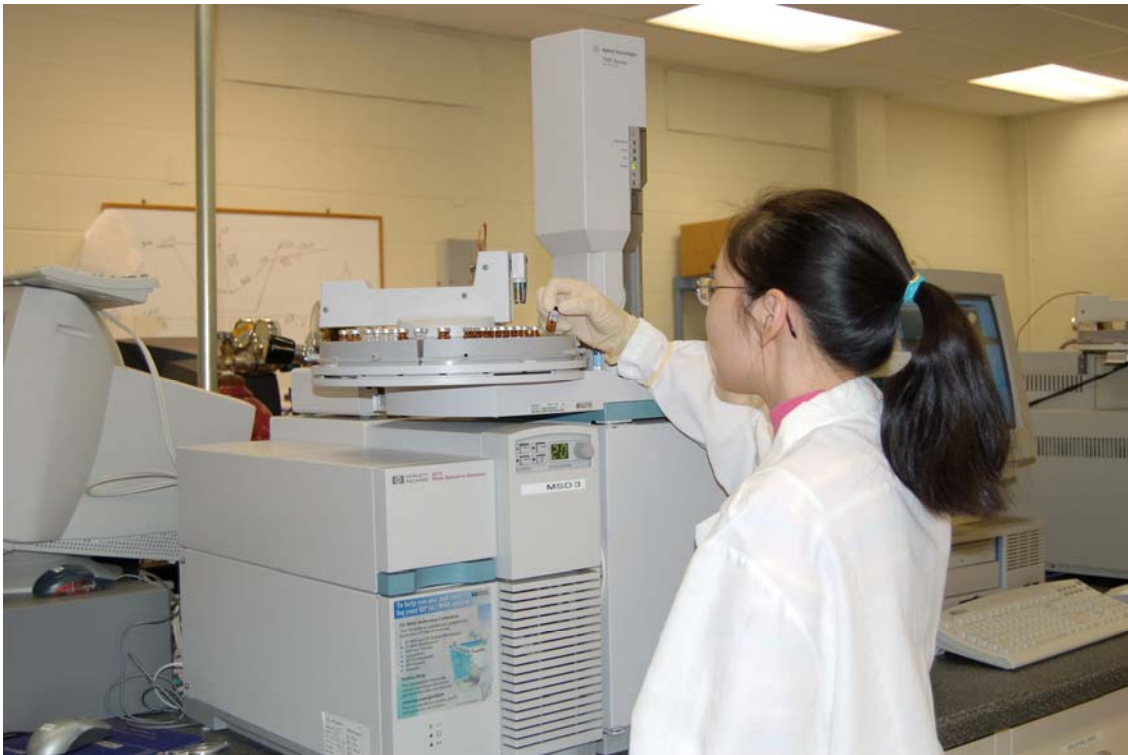
High-performance electronics

Agilent's 5973N MSD's Performance Electronics extend MSD capabilities for

Fast GC/MS in both full scan and selected ion monitoring (SIM) modes.

- Scan rates up to 10,000 amu/sec— compatible with Fast GC/MS
- Up to 2-fold increase in data points for SIM—Fast GC/MS in SIM mode
- More data points—for better peak integration

Additional data points in SIM mode





## UNITED STATES DRUG TESTING LABORATORIES

1700 SOUTH MOUNT PROSPECT ROAD  
DES PLAINES, ILLINOIS 60018  
(847) 375-0770 PHONE (847) 375-0775 FAX  
WWW.USDTL.COM

### 10. GC Columns Configuration

#### J&W DB1 and DB-5 0.25 mm ID, 0.25 $\mu$ m film thickness, 12 m length

Gas chromatography is the use of a carrier gas to convey the sample (as a vapor) through a column consisting of an inert support and a stationary phase that interacts with sample components, thus it is usually partition chromatography. There are also ranges of materials, especially for permanent gas and light hydrocarbon analysis that utilize adsorption. The simplest partition systems consisted of a steel tube filled with crushed brick that had been coated with a hydrocarbon that had a high boiling point, eg squalane. Today, the technique uses very narrow fused silica tubes (0.1 to 0.3mm ID) that have sophisticated stationary phase films (0.1 to 5 $\mu$ m) bonded to the surface and also cross-linked to increase thermal stability.

Two-dimensional Gas Chromatography (GC/GC) is the use of two GC columns in series to as a strategy to reduce background noise in the detector. This technology has been a prevalent technique in the petrochemical industry for decades but has only recently been utilized in the drug testing industry. The primary strategy is to use two columns as different as possible. The specimen is introduced into the first column then a bolus is cut onto the second column which then theoretically separates out any peaks that are under the peak of interest. The eluate from the first column is vented to the outside before and after the "cut". This technique has become reliable due to improvements in micro-fluidics control, inert zero dead volume column connections, Electronic Pressure Control (EPC) of the 5890 GC, and retention time control of the GC oven. This technique was specifically applied to THCA in hair recently [1].

[1] C. Moore, S. Rana, C. Coulter, F. Feyerherm, and H. Prest. *J. Anal Tox.* **30** (2006) 171.

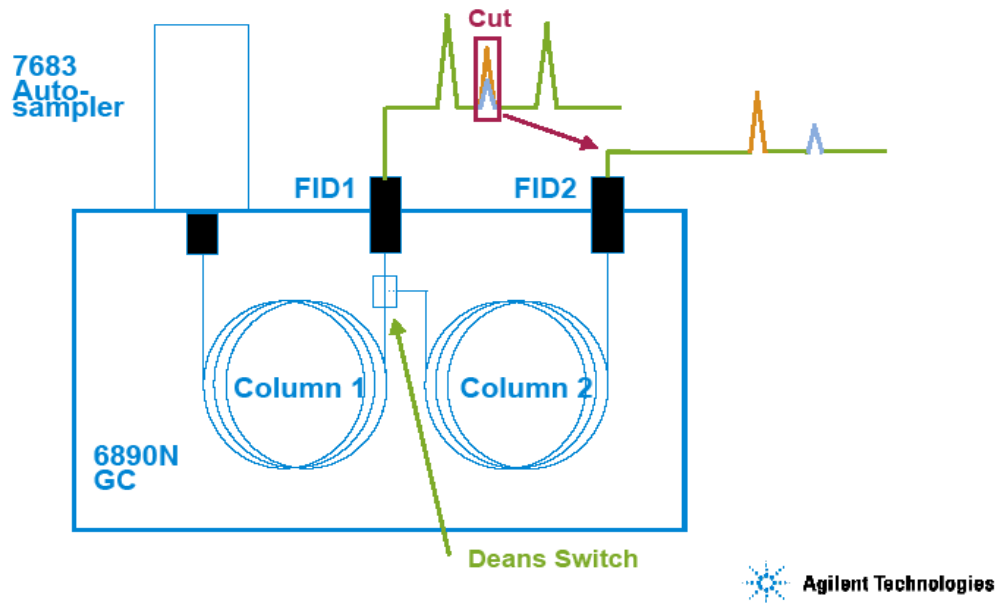




## UNITED STATES DRUG TESTING LABORATORIES

1700 SOUTH MOUNT PROSPECT ROAD  
DES PLAINES, ILLINOIS 60018  
(847) 375-0770 PHONE (847) 375-0775 FAX  
WWW.USDTL.COM

### “Simplified” 2-Dimensional GC

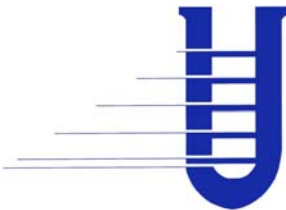


Click below for a brief technical overview:

<http://www.chem.agilent.com/Library/technicaloverviews/Public/5988-9530EN.pdf>

Click below for a presentation using 2D GCMS for oral fluid drug testing:

<http://www.chem.agilent.com/Library/posters/Public/Analysis of Drugs of Abuse in Oral Fluid with 2-D Heartcutting GCMS.pdf>



## UNITED STATES DRUG TESTING LABORATORIES

1700 SOUTH MOUNT PROSPECT ROAD  
DES PLAINES, ILLINOIS 60018  
(847) 375-0770 PHONE (847) 375-0775 FAX  
WWW.USDTL.COM

### 11. Applied BioSystems API 3200 LCMSMS

The API 3200™ LC/MS/MS System brings the power and performance of triple quadrupole mass spectrometry to your benchtop.

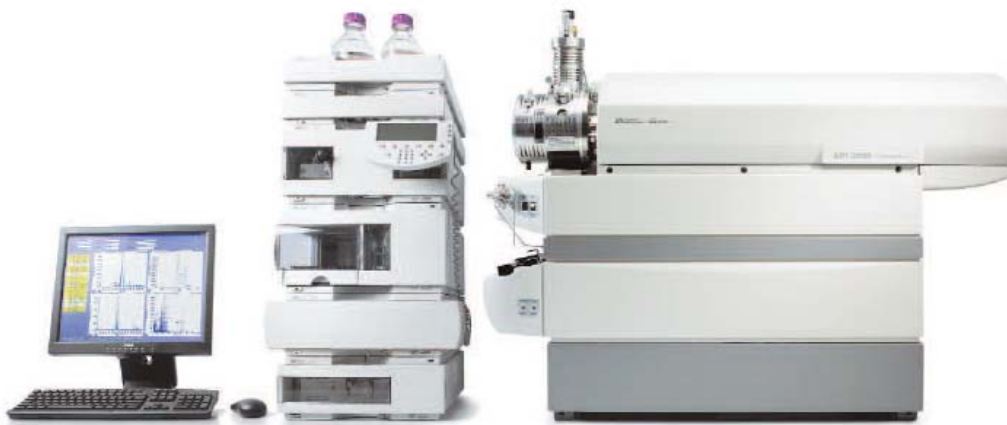
- Streamlined design results in a true benchtop LC/MS/MS system -- requiring less space in your lab
- TurboIonSpray® and APCI sources with fully integrated gas and electrical connections allow quick and easy changes of ionization modes
- Robust ion sources and proven Curtain Gas™ interface technology ensure trouble-free operation and productivity
- Revolutionary LINAC™ collision cell technology provides fast scan times without compromising sensitivity or mass spectral quality for superior MS/MS performance
- Windows NT® platform-based Analyst™ software provides single point control of LC, built-in syringe pump, and diverter valve, expediting methods development in drug discovery and development.
- Information Dependent Acquisition (IDA) enables unattended, automated MS to MS/MS acquisition providing better structural information

#### Maximum Flexibility

A compact, easy-to-use LC/MS/MS system for demanding, high-throughput MS/MS laboratories, this innovative system features patented Applied Biosystems/MDS SCIEX API technology within easily changeable ion sources, providing maximum flexibility for use in a wide range of applications.

#### Ideal for High Throughput

Analyst™ Software provides data processing and total instrument control of data acquisition, including the built-in syringe pump and diverter valve, for the API 3200 system. Sophisticated software applications such as Information Dependent Acquisition (IDA) and Metabolite ID provide automated metabolite profiling on in vivo and in vitro samples. Automaton, an application for automated compound optimization, method development, and quantitative analysis, further expands the range of solutions provided by the API 3200™ system. The single-point control, proven reliability, revolutionary LINAC® collision cell, and advanced Analyst™ Software applications make the API 3200™ system the ideal solution for high throughput quantitative and qualitative challenges.



\*Marketing material gathered from [www.appliedbiosystems.com](http://www.appliedbiosystems.com).



## UNITED STATES DRUG TESTING LABORATORIES

1700 SOUTH MOUNT PROSPECT ROAD  
DES PLAINES, ILLINOIS 60018  
(847) 375-0770 PHONE (847) 375-0775 FAX  
WWW.USDTL.COM

## 12. HPLC Column

### Phenomenex Synergi Hydro-RP (50mm x 2mm, 2.0um particle size)

Founded in 1982 and headquartered in Torrance, California, USA, Phenomenex has been a leading provider of advanced technology solutions for chromatographic techniques in the areas of sample preparation, high-pressure liquid chromatography (HPLC) and gas chromatography (GC). For over 25 years Phenomenex has been helping analysts around the world analyze and purify a variety of important chemicals, biochemical raw materials, intermediates, and finished products.

#### Extreme Retention of Hydrophobic Compounds

Synergi Hydro-RP shows increased hydrophobic retention and polar retention compared to other C18 phases. Increased hydrophobic retention allows for flexibility in fraction manipulation and modification of the organic component in the mobile phase. Enhanced hydrophobic retention allows for separation of compound that differ slightly in hydrophobicity, and results in compounds eluting in higher organic mobile phase, delivering a higher MS sensitivity versus more aqueous eluates.

#### A C18 with Enhanced Retention of Polar Compounds

Extremely polar analytes do not retain well nor separate well on conventional C18 columns. Unlike conventional C18 columns, Synergi Hydro-RP's C18 bonded phase is endcapped with a proprietary polar group to provide extreme retention of both hydrophobic as well as polar compounds via polar interactions, hydrogen bonding or electrostatic interactions. The high (475 m<sup>2</sup>/g) 4 μm silica surface area combined with a dense bonded phase coverage allows for substantial interaction between the sample analyte and the bonded phase yielding overall a very retentive C18 phase.

#### Increase Polar Retention with 100 % Aqueous Mobile Phase

Running a 100 % aqueous mobile phase on a C18 column can provide improved retention of extremely polar compounds. However, conventional C18 phases are poorly wetted by highly aqueous mobile phases (>95 % aqueous) causing the C18 ligands to mat down on the surface of the silica, over time, retention is completely lost. Organic acids and catecholamines are often difficult to chromatograph as their polarity hinders interaction with conventional C18 ligands, but this is easily accomplished on Synergi Hydro-RP using a 100 % aqueous mobile phase. Synergi Hydro-RP utilizes a bonded phase designed for 100 % aqueous mobile phases so the C18 ligands remain accessible to the sample and column performance is maintained.



\*Marketing material gathered from [www.phenomenex.com](http://www.phenomenex.com).



**UNITED STATES DRUG TESTING LABORATORIES**  
1700 SOUTH MOUNT PROSPECT ROAD  
DES PLAINES, ILLINOIS 60018  
(847) 375-0770 PHONE (847) 375-0775 FAX  
WWW.USDTL.COM

### 13. RESULTS (Positive Specimens)

HSN	SSN	CMP	CMP_RESULT
636638	26	THCA	456
636651	4	Diazepam	7.8
636651	4	Hydrocodone	9.9
636651	4	Nordiazepam	14.2
636664	08R	Nordiazepam	5
636664	08R	THCA	3866
636671	17R	Hydrocodone	9.1
636676	13R	Hydrocodone	30.4
636683	32	Morphine	3.7
636688	30	Morphine	3.2
636692	25R	Diazepam	8
636692	25R	EDDP	64
636692	25R	Methadone	176
636692	25R	Nordiazepam	21.3
638684	63	Morphine	6
638684	63	THCA	301
638688	67	Morphine	3.6
638694	64	EDDP	65
638694	64	Methadone	146
638696	42	EDDP	125.3
638696	42	Methadone	56
638696	42	Morphine	12.5
638699	62	Morphine	4.8
638704	60	Morphine	3.2
638708	53	EDDP	41
638708	53	Methadone	29.7
638709	45	Morphine	5.1
639098	MMC12	Alprazolam	4.3
640273	MMC64	THCA	4130
640274	MMC70	Hydrocodone	19.2
640274	MMC70	Nordiazepam	4.4
640278	MMC69	Hydrocodone	4.6
640280	MMC68	EDDP	25.9
640280	MMC68	Methadone	56.4
640281	MMC71	THCA	3011
640282	MMC74	THCA	3164
640288	MMC77	THCA	4589
640289	MMC66	Morphine	30.6
640290	MMC65	Nordiazepam	5.6
640294	MMC112	Morphine	5.5
640303	MMC101	Hydrocodone	3.8
640304	MMC107	THCA	290
640311	MMC90	THCA	3725
640320	MMC85	THCA	3208



## UNITED STATES DRUG TESTING LABORATORIES

1700 SOUTH MOUNT PROSPECT ROAD  
DES PLAINES, ILLINOIS 60018  
(847) 375-0770 PHONE (847) 375-0775 FAX  
WWW.USDTL.COM

640323	MMC109	Alprazolam	2.2
640323	MMC109	THCA	1395
640662	MMC31	EDDP	63
640662	MMC31	Methadone	64
640700	MMC40	THCA	2101
640712	MMC52	THCA	3342
640722	MMC48R	THCA	2350
640728	MMC9R	EDDP	32
640728	MMC9R	Methadone	65
640733	MMC1R	THCA	642
640738	MMC3R	THCA	4308
640741	MMC75R	Hydrocodone	2.1
640741	MMC75R	THCA	469
640742	MMC73R	Nordiazepam	3.3
640742	MMC73R	THCA	2705
640748	MMC80R	Morphine	8.1
640750	MMC25R	THCA	2311
640752	MMC11RR	EDDP	106
640752	MMC11RR	Methadone	142
640752	MMC11RR	THCA	3348
640754	MMC3RR	THCA	4442
640759	MMC1RR	THCA	1205
640760	MMC4RR	THCA	572
640767	MMC2R	THCA	491
640768	MMC18R	THCA	939
640769	MMC8RR	THCA	3090
640770	MMC10RR	THCA	111
640771	MMC7R	THCA	286
640772	MMC19	THCA	684
641211	MMC020	Diazepam	3.3
641214	MMC015	Codeine	9.2
641214	MMC015	Morphine	2.7
641215	MMC016	Codeine	8.1
641215	MMC016	Morphine	2.9
641220	MMC25WH	EDDP	8.1
641220	MMC25WH	Methadone	35.6
641227	MMC13WH	THCA	152
641231	MMC31WH	THCA	994
641232	MMC14WH	Hydromorphone	2.2
641589	MMC28RGH	Diazepam	4.1
641589	MMC28RGH	Nordiazepam	31.9
641593	MMC25TMH	THCA	167
641604	MMC17TMH	THCA	3236
641616	MMC35RGH	Codeine	54.8
641616	MMC35RGH	Morphine	3.1
641625	MMC20BRMC	Diazepam	3.5
641625	MMC20BRMC	Nordiazepam	5
641638	MMC92CAMC	THCA	461
641660	MMC23BRMC	EDDP	52



## UNITED STATES DRUG TESTING LABORATORIES

1700 SOUTH MOUNT PROSPECT ROAD  
DES PLAINES, ILLINOIS 60018  
(847) 375-0770 PHONE (847) 375-0775 FAX  
WWW.USDTL.COM

641660	MMC23BRMC	Methadone	83
641668	MMC118CHH	THCA	1451
641670	MMC120CHH	Hydrocodone	3.2
641672	MMC121CHH	Hydrocodone	7.2
641673	MMC122CHH	THCA	1456
641676	MMC125CHH	Nordiazepam	2.4
641682	MMC131CHH	Morphine	4.4
641686	MMC135CHH	THCA	987
641691	MMC140CHH	THCA	1325
642880	MMC108CAMC	EDDP	75
642880	MMC108CAMC	Methadone	177
642890	MMC150CHH	Hydrocodone	3.8
642891	MMC147CHH	Diazepam	12.3
642891	MMC147CHH	Morphine	15.5
642891	MMC147CHH	Nordiazepam	29.7
642891	MMC147CHH	Temezepam	4
642892	MMC156CHH	Hydrocodone	18.2
642894	MMC162CHH	Diazepam	4.5
642894	MMC162CHH	EDDP	37
642894	MMC162CHH	Methadone	53
642894	MMC162CHH	Morphine	14.7
642894	MMC162CHH	Nordiazepam	13.3
642895	MMC161CHH	THCA	1512
642898	MMC163CHH	Nordiazepam	2.8
643328	MMC43CH	THCA	1451
643339	MMC54CH	THCA	1332
643340	MMC55CH	THCA	1156
643889	MMC176CHH	Morphine	2.2
643898	MMC37WH	THCA	5522
643901	MMC182CHH	Hydrocodone	16.7
643901	MMC182CHH	Morphine	10.3
645632	MMC121CAMC	Hydrocodone	3
645633	MMC122CAMC	THCA	16095
645657	MMC220CHH	Morphine	8.5
645658	MMC56CH	THCA	1304
645663	MMC61CH	THCA	7358
645666	MMC64CH	THCA	6415
645677	MMC27BRMC	EDDP	22
645677	MMC27BRMC	Methadone	52
645681	MMC31BRMC	Alprazolam	4
645682	MMC32BRMC	THCA	2261
645691	MMC36TMH	THCA	10450
645712	MMC62RGH	Hydrocodone	5.8
645712	MMC62RGH	Nordiazepam	2.8
645712	MMC62RGH	THCA	4765
645716	MMC67RGH	THCA	4579
645719	MMC69RGH	THCA	5067
645722	MMC123CAMC	Hydrocodone	5.6
645726	MMC127CAMC	Hydrocodone	10.7





## UNITED STATES DRUG TESTING LABORATORIES

1700 SOUTH MOUNT PROSPECT ROAD  
DES PLAINES, ILLINOIS 60018  
(847) 375-0770 PHONE (847) 375-0775 FAX  
WWW.USDTL.COM

646330	MMC47WH	THCA	1613
646334	MMC59WH	Hydrocodone	13.2
646382	MMC131CAMC	Amphetamine	85
646382	MMC131CAMC	Methamphetamine	58
646383	MMC38RMH	THCA	5245
646386	MMC41RMH	Hydrocodone	6.9
646389	MMC44RMH	Morphine	17.3
646395	MMC50RMH	THCA	3898
646397	MMC52RMH	Codeine	7.4
646406	MMC222CHH	THCA	2556
646415	MMC247CHH	Hydrocodone	3
646415	MMC247CHH	THCA	1970
646437	MMC221CHH	Diazepam	3
646437	MMC221CHH	Nordiazepam	15.5
646448	MMC230CHH	THCA	2953



**UNITED STATES DRUG TESTING LABORATORIES**  
1700 SOUTH MOUNT PROSPECT ROAD  
DES PLAINES, ILLINOIS 60018  
(847) 375-0770 PHONE (847) 375-0775 FAX  
WWW.USDTL.COM

## 14. RESULTS (Negative Specimens)

CUST_ID	HSN	SSN	FINAL_RESULT
-----	-----	-----	-----
MURCHWV	636628	25	N
MURCHWV	636629	17	N
MURCHWV	636630	12	N
MURCHWV	636631	20	N
MURCHWV	636632	21	N
MURCHWV	636633	11RR	N
MURCHWV	636634	5	N
MURCHWV	636635	22	N
MURCHWV	636637	8	N
MURCHWV	636640	2	N
MURCHWV	636641	19	N
MURCHWV	636642	3	N
MURCHWV	636643	34	N
MURCHWV	636644	15	N
MURCHWV	636645	33	N
MURCHWV	636646	6	N
MURCHWV	636647	27	N
MURCHWV	636648	16	N
MURCHWV	636649	14	N
MURCHWV	636650	1	N
MURCHWV	636652	24	N
MURCHWV	636653	9	N
MURCHWV	636654	28	N
MURCHWV	636655	02R	N
MURCHWV	636656	26R	N
MURCHWV	636657	10	N
MURCHWV	636658	13	N
MURCHWV	636659	21R	N
MURCHWV	636660	27R	N
MURCHWV	636661	05R	N
MURCHWV	636662	23	N
MURCHWV	636663	10R	N
MURCHWV	636665	04R	N
MURCHWV	636666	23R	N
MURCHWV	636667	20R	N
MURCHWV	636668	24R	N
MURCHWV	636669	28R	N
MURCHWV	636670	15R	N
MURCHWV	636672	19R	N
MURCHWV	636673	7	N
MURCHWV	636674	16R	N
MURCHWV	636675	12R	N



## UNITED STATES DRUG TESTING LABORATORIES

1700 SOUTH MOUNT PROSPECT ROAD  
DES PLAINES, ILLINOIS 60018  
(847) 375-0770 PHONE (847) 375-0775 FAX  
WWW.USDTL.COM

MURCHWV	636677	14R	N
MURCHWV	636678	22R	N
MURCHWV	636679	29	N
MURCHWV	636680	31	N
MURCHWV	636681	06R	N
MURCHWV	636682	18	N
MURCHWV	636684	18R	N
MURCHWV	636685	01R	N
MURCHWV	636686	35	N
MURCHWV	636687	03R	N
MURCHWV	636689	11RRR	N
MURCHWV	636690	07R	N
MURCHWV	636691	09R	N
MURCHWV	646316	MMC72RGH	N
MURCHWV	646317	MMC73RGH	N
MURCHWV	646318	MMC74RGH	N
MURCHWV	646319	MMC75RGH	N
MURCHWV	646320	MMC76RGH	N
MURCHWV	646321	MMC77RGH	N
MURCHWV	646322	MMC78RGH	N
MURCHWV	646323	MMC79RGH	N
MURCHWV	646324	MMC80RGH	N
MURCHWV	646325	MMC81RGH	N
MURCHWV	646326	MMC82RGH	N
MURCHWV	646327	MMC83RGH	N
MURCHWV	646328	MMC84RGH	N
MURCHWV	646329	MMC52WH	N
MURCHWV	646331	MMC44WH	N
MURCHWV	646332	MMC45WH	N
MURCHWV	646333	MMC60WH	N
MURCHWV	646335	MMC53WH	N
MURCHWV	646336	MMC43TMH	N
MURCHWV	646337	MMC44TMH	N
MURCHWV	646338	MMC58WH	N
MURCHWV	646339	MMC45TMH	N
MURCHWV	646340	MMC46TMH	N
MURCHWV	646341	MMC54WH	N
MURCHWV	646342	MMC62WH	N
MURCHWV	646343	MMC47TMH	N
MURCHWV	646345	MMC48TMH	N
MURCHWV	646347	MMC49TMH	N
MURCHWV	646348	MMC61WH	N
MURCHWV	646351	MMC46WH	N
MURCHWV	646352	MMC50TMH	N
MURCHWV	646355	MMC55WH	N
MURCHWV	646356	MMC63WH	N
MURCHWV	646357	MMC51TMH	N
MURCHWV	646358	MMC52TMH	N
MURCHWV	646361	MMC56WH	N



## UNITED STATES DRUG TESTING LABORATORIES

1700 SOUTH MOUNT PROSPECT ROAD  
DES PLAINES, ILLINOIS 60018  
(847) 375-0770 PHONE (847) 375-0775 FAX  
WWW.USDTL.COM

MURCHWV	646362	MMC53TMH	N
MURCHWV	646363	MMC50WH	N
MURCHWV	646365	MMC54TMH	N
MURCHWV	646367	MMC55TMH	N
MURCHWV	646368	MMC57WH	N
MURCHWV	646369	MMC56TMH	N
MURCHWV	646371	MMC48WH	N
MURCHWV	646373	MMC57TMH	N
MURCHWV	646375	MMC58TMH	N
MURCHWV	646376	MMC49WH	N
MURCHWV	646378	MMC51WH	N
MURCHWV	646379	MMC59TMH	N
MURCHWV	646381	MMC130CAMC	N
MURCHWV	646344	MMC36BRMC	N
MURCHWV	646346	MMC37BRMC	N
MURCHWV	646353	MMC38BRMC	N
MURCHWV	646354	MMC39BRMC	N
MURCHWV	646359	MMC40BRMC	N
MURCHWV	646360	MMC41BRMC	N
MURCHWV	646364	MMC42BRMC	N
MURCHWV	646366	MMC43BRMC	N
MURCHWV	646370	MMC44BRMC	N
MURCHWV	646372	MMC45BRMC	N
MURCHWV	646374	MMC46BRMC	N
MURCHWV	646377	MMC47BRMC	N
MURCHWV	646380	MMC48BRMC	N
MURCHWV	646384	MMC39RMH	N
MURCHWV	646385	MMC40RMH	N
MURCHWV	646387	MMC42RMH	N
MURCHWV	646388	MMC43RMH	N
MURCHWV	646390	MMC45RMH	N
MURCHWV	646391	MMC46RMH	N
MURCHWV	646392	MMC47RMH	N
MURCHWV	646393	MMC48RMH	N
MURCHWV	646394	MMC49RMH	N
MURCHWV	646396	MMC51RMH	N
MURCHWV	646398	MMC53RMH	N
MURCHWV	646399	MMC54RMH	N
MURCHWV	646400	MMC55RMH	N
MURCHWV	646401	MMC235CHH	N
MURCHWV	646402	MMC243CHH	N
MURCHWV	646403	MMC238CHH	N
MURCHWV	646404	MMC240CHH	N
MURCHWV	646405	MMC246CHH	N
MURCHWV	646407	MMC224CHH	N
MURCHWV	646413	MMC233CHH	N
MURCHWV	646414	MMC229CHH	N
MURCHWV	646416	MMC226CHH	N
MURCHWV	646421	MMC242CHH	N



## UNITED STATES DRUG TESTING LABORATORIES

1700 SOUTH MOUNT PROSPECT ROAD  
DES PLAINES, ILLINOIS 60018  
(847) 375-0770 PHONE (847) 375-0775 FAX  
WWW.USDTL.COM

MURCHWV	646434	MMC223CHH	N
MURCHWV	646435	MMC236CHH	N
MURCHWV	646436	MMC234CHH	N
MURCHWV	646438	MMC225CHH	N
MURCHWV	646439	MMC244CHH	N
MURCHWV	646440	MMC241CHH	N
MURCHWV	646441	MMC227CHH	N
MURCHWV	646446	MMC231CHH	N
MURCHWV	646447	MMC245CHH	N
MURCHWV	646449	MMC232CHH	N
MURCHWV	646450	MMC237CHH	N
MURCHWV	646451	MMC228CHH	N
MURCHWV	646452	MMC239CHH	N
MURCHWV	642860	MMC104CAMC	N
MURCHWV	642861	MMC103CAMC	N
MURCHWV	642862	MMC114CAMC	N
MURCHWV	642863	MMC109CAMC	N
MURCHWV	642864	MMC111CAMC	N
MURCHWV	642865	MMC106CAMC	N
MURCHWV	642866	MMC107CAMC	N
MURCHWV	642867	MMC99CAMC	N
MURCHWV	642868	MMC10CAMC	N
MURCHWV	642869	MMC115CAMC	N
MURCHWV	642870	MMC105CAMC	N
MURCHWV	642871	MMC100CAMC	N
MURCHWV	642872	MMC110CAMC	N
MURCHWV	642873	MMC113CAMC	N
MURCHWV	642874	MMC101CAMC	N
MURCHWV	642879	MMC112CAMC	N
MURCHWV	642881	MMC160CHH	N
MURCHWV	642882	MMC154CHH	N
MURCHWV	642883	MMC148CHH	N
MURCHWV	642884	MMC164CHH	N
MURCHWV	642885	MMC153CHH	N
MURCHWV	642886	MMC158CHH	N
MURCHWV	642887	MMC166CHH	N
MURCHWV	642888	MMC159CHH	N
MURCHWV	642889	MMC145CHH	N
MURCHWV	642893	MMC152CHH	N
MURCHWV	642896	MMC157CHH	N
MURCHWV	642897	MMC155CHH	N
MURCHWV	642899	MMC167CHH	N
MURCHWV	642900	MMC165CHH	N
MURCHWV	642901	MMC149CHH	N
MURCHWV	642902	MMC168CHH	N
MURCHWV	642903	MMC146CHH	N
MURCHWV	642904	MMC144CHH	N
MURCHWV	642905	MMC151CHH	N
MURCHWV	639092	MMC9	N



## UNITED STATES DRUG TESTING LABORATORIES

1700 SOUTH MOUNT PROSPECT ROAD  
DES PLAINES, ILLINOIS 60018  
(847) 375-0770 PHONE (847) 375-0775 FAX  
WWW.USDTL.COM

MURCHWV	639093	MMC1	N
MURCHWV	639094	MMC4	N
MURCHWV	639095	MMC6	N
MURCHWV	639096	MMC10	N
MURCHWV	639097	MMC11	N
MURCHWV	639099	MMC13	N
MURCHWV	639100	MMC14	N
MURCHWV	639101	MMC8	N
MURCHWV	639102	MMC3	N
MURCHWV	639103	MMC02	N
MURCHWV	639104	MMC05	N
MURCHWV	639105	MMC07	N
MURCHWV	639106	MMC03	N
MURCHWV	639111	MMC07R	N
MURCHWV	639116	MMC08	N
MURCHWV	639117	MMC02R	N
MURCHWV	639126	MMC04	N
MURCHWV	639127	MMC06	N
MURCHWV	639128	MMC011	N
MURCHWV	639133	MMC05R	N
MURCHWV	639134	MMC09	N
MURCHWV	639135	MMC01	N
MURCHWV	639136	MMC010	N
MURCHWV	641570	MMC42RGH	N
MURCHWV	641571	MMC36RGH	N
MURCHWV	641572	MMC26RGH	N
MURCHWV	641573	MMC27RGH	N
MURCHWV	641578	MMC39RGH	N
MURCHWV	641583	MMC40RGH	N
MURCHWV	641591	MMC32RGH	N
MURCHWV	641592	MMC29RGH	N
MURCHWV	641594	MMC37RGH	N
MURCHWV	641595	MMC45RGH	N
MURCHWV	641598	MMC43RGH	N
MURCHWV	641601	MMC41RGH	N
MURCHWV	641602	MMC34RGH	N
MURCHWV	641605	MMC31RGH	N
MURCHWV	641607	MMC46RGH	N
MURCHWV	641610	MMC38RGH	N
MURCHWV	641612	MMC30RGH	N
MURCHWV	641614	MMC47RGH	N
MURCHWV	641617	MMC44RGH	N
MURCHWV	641618	MMC33RGH	N
MURCHWV	641620	MMC1BRMC	N
MURCHWV	641621	MMC8BRMC	N
MURCHWV	641622	MMC24BRMC	N
MURCHWV	641630	MMC2BRMC	N
MURCHWV	641632	MMC3BRMC	N
MURCHWV	641635	MMC4BRMC	N



## UNITED STATES DRUG TESTING LABORATORIES

1700 SOUTH MOUNT PROSPECT ROAD  
DES PLAINES, ILLINOIS 60018  
(847) 375-0770 PHONE (847) 375-0775 FAX  
WWW.USDTL.COM

MURCHWV	641637	MMC5BRMC	N
MURCHWV	641639	MMC6BRMC	N
MURCHWV	641641	MMC7BRMC	N
MURCHWV	641642	MMC9BRMC	N
MURCHWV	641643	MMC10BRMC	N
MURCHWV	641644	MMC11BRMC	N
MURCHWV	641645	MMC12BRMC	N
MURCHWV	641646	MMC14BRMC	N
MURCHWV	641650	MMC13BRMC	N
MURCHWV	641653	MMC15BRMC	N
MURCHWV	641654	MMC16BRMC	N
MURCHWV	641655	MMC17BRMC	N
MURCHWV	641656	MMC18BRMC	N
MURCHWV	641657	MMC19BRMC	N
MURCHWV	641658	MMC21BRMC	N
MURCHWV	641659	MMC22BRMC	N
MURCHWV	643874	MMC169CHH	N
MURCHWV	643876	MMC180CHH	N
MURCHWV	643879	MMC171CHH	N
MURCHWV	643881	MMC172CHH	N
MURCHWV	643884	MMC173CHH	N
MURCHWV	643886	MMC174CHH	N
MURCHWV	643888	MMC175CHH	N
MURCHWV	643892	MMC177CHH	N
MURCHWV	643893	MMC178CHH	N
MURCHWV	643894	MMC179CHH	N
MURCHWV	643895	MMC180CHH	N
MURCHWV	643896	MMC181CHH	N
MURCHWV	643902	MMC183CHH	N
MURCHWV	643905	MMC184CHH	N
MURCHWV	643906	MMC185CHH	N
MURCHWV	643907	MMC186CHH	N
MURCHWV	643908	MMC187CHH	N
MURCHWV	643911	MMC188CHH	N
MURCHWV	643912	MMC189CHH	N
MURCHWV	643913	MMC190CHH	N
MURCHWV	643914	MMC191CHH	N
MURCHWV	643915	MMC192CHH	N
MURCHWV	643916	MMC193CHH	N
MURCHWV	643917	MMC194CHH	N
MURCHWV	643918	MMC195CHH	N
MURCHWV	643919	MMC196CHH	N
MURCHWV	640275	MMC18	N
MURCHWV	640276	MMC75	N
MURCHWV	640277	MMC78	N
MURCHWV	640279	MMC72	N
MURCHWV	640283	MMC67	N
MURCHWV	640284	MMC79	N
MURCHWV	640285	MMC73	N



## UNITED STATES DRUG TESTING LABORATORIES

1700 SOUTH MOUNT PROSPECT ROAD  
DES PLAINES, ILLINOIS 60018  
(847) 375-0770 PHONE (847) 375-0775 FAX  
WWW.USDTL.COM

MURCHWV	640286	MMC80	N
MURCHWV	640287	MMC76	N
MURCHWV	640291	MMC103	N
MURCHWV	640292	MMC106	N
MURCHWV	640293	MMC98	N
MURCHWV	640295	MMC111	N
MURCHWV	640296	MMC108	N
MURCHWV	640297	MMC95	N
MURCHWV	640298	MMC97	N
MURCHWV	640299	MMC114	N
MURCHWV	640300	MMC99	N
MURCHWV	640301	MMC93	N
MURCHWV	640302	MMC86	N
MURCHWV	640305	MMC87	N
MURCHWV	640306	MMC100	N
MURCHWV	640307	MMC83	N
MURCHWV	640308	MMC96	N
MURCHWV	640309	MMC91	N
MURCHWV	640310	MMC102	N
MURCHWV	640312	MMC82	N
MURCHWV	640313	MMC105	N
MURCHWV	640314	MMC81	N
MURCHWV	640315	MMC84	N
MURCHWV	640316	MMC110	N
MURCHWV	640317	MMC94	N
MURCHWV	640318	MMC104	N
MURCHWV	640319	MMC113	N
MURCHWV	640321	MMC92	N
MURCHWV	640322	MMC88	N
MURCHWV	640324	MMC89	N
MURCHWV	638676	47RR	N
MURCHWV	638677	41	N
MURCHWV	638678	58	N
MURCHWV	638679	65	N
MURCHWV	638680	40	N
MURCHWV	638681	38	N
MURCHWV	638682	68	N
MURCHWV	638683	57	N
MURCHWV	638685	51	N
MURCHWV	638686	46	N
MURCHWV	638687	39	N
MURCHWV	638689	50	N
MURCHWV	638690	37	N
MURCHWV	638691	48	N
MURCHWV	638692	36	N
MURCHWV	638693	52	N
MURCHWV	638695	49	N
MURCHWV	638697	69	N
MURCHWV	638698	59	N





## UNITED STATES DRUG TESTING LABORATORIES

1700 SOUTH MOUNT PROSPECT ROAD  
DES PLAINES, ILLINOIS 60018  
(847) 375-0770 PHONE (847) 375-0775 FAX  
WWW.USDTL.COM

MURCHWV	638700	61	N
MURCHWV	638701	56	N
MURCHWV	638702	66	N
MURCHWV	638703	44	N
MURCHWV	638705	55	N
MURCHWV	638706	10RR	N
MURCHWV	638707	16RR	N
MURCHWV	638710	43	N
MURCHWV	638711	54	N
MURCHWV	638712	6	N
MURCHWV	638713	5	N
MURCHWV	638714	15RR	N
MURCHWV	638715	18RR	N
MURCHWV	638716	12RR	N
MURCHWV	638717	17RR	N
MURCHWV	638718	8	N
MURCHWV	638719	7	N
MURCHWV	638720	1	N
MURCHWV	638721	9	N
MURCHWV	638722	13RR	N
MURCHWV	638723	3	N
MURCHWV	638724	2	N
MURCHWV	638725	19RR	N
MURCHWV	638726	11RRRR	N
MURCHWV	638727	4	N
MURCHWV	638728	14RRR	N
MURCHWV	640651	MMC29	N
MURCHWV	640652	MMC25	N
MURCHWV	640653	MMC37	N
MURCHWV	640654	MMC24	N
MURCHWV	640655	MMC22	N
MURCHWV	640656	MMC21	N
MURCHWV	640657	MMC38	N
MURCHWV	640658	MMC20	N
MURCHWV	640659	MMC30	N
MURCHWV	640660	MMC28	N
MURCHWV	640661	MMC26	N
MURCHWV	640663	MMC27	N
MURCHWV	640664	MMC35	N
MURCHWV	640665	MMC33	N
MURCHWV	640666	MMC39	N
MURCHWV	640671	MMC36	N
MURCHWV	640672	MMC34	N
MURCHWV	640673	MMC32	N
MURCHWV	640674	MMC23	N
MURCHWV	643325	MMC40CH	N
MURCHWV	643326	MMC41CH	N
MURCHWV	643327	MMC42CH	N
MURCHWV	643329	MMC44CH	N



## UNITED STATES DRUG TESTING LABORATORIES

1700 SOUTH MOUNT PROSPECT ROAD  
DES PLAINES, ILLINOIS 60018  
(847) 375-0770 PHONE (847) 375-0775 FAX  
WWW.USDTL.COM

MURCHWV	643330	MMC45CH	N
MURCHWV	643331	MMC46CH	N
MURCHWV	643332	MMC47CH	N
MURCHWV	643333	MMC48CH	N
MURCHWV	643334	MMC49CH	N
MURCHWV	643335	MMC50CH	N
MURCHWV	643336	MMC51CH	N
MURCHWV	643337	MMC52CH	N
MURCHWV	643338	MMC53CH	N
MURCHWV	640688	MMC60	N
MURCHWV	640689	MMC34R	N
MURCHWV	640690	MMC36R	N
MURCHWV	640691	MMC39R	N
MURCHWV	640692	MMC35R	N
MURCHWV	640693	MMC41	N
MURCHWV	640694	MMC48	N
MURCHWV	640695	MMC62	N
MURCHWV	640696	MMC54	N
MURCHWV	640697	MMC63	N
MURCHWV	640698	MMC30R	N
MURCHWV	640699	MMC32R	N
MURCHWV	640701	MMC47	N
MURCHWV	640702	MMC46	N
MURCHWV	640703	MMC59	N
MURCHWV	640704	MMC42	N
MURCHWV	640705	MMC38R	N
MURCHWV	640706	MMC44	N
MURCHWV	640707	MMC31R	N
MURCHWV	640708	MMC61	N
MURCHWV	640709	MMC57	N
MURCHWV	640710	MMC56	N
MURCHWV	640711	MMC55	N
MURCHWV	640713	MMC53	N
MURCHWV	640714	MMC50	N
MURCHWV	640715	MMC29R	N
MURCHWV	640716	MMC49	N
MURCHWV	640717	MMC37R	N
MURCHWV	640718	MMC33R	N
MURCHWV	640719	MMC45	N
MURCHWV	640720	MMC51	N
MURCHWV	640721	MMC43	N
MURCHWV	640723	MMC58	N
MURCHWV	640724	MMC33RR	N
MURCHWV	640725	MMC6R	N
MURCHWV	640726	MMC8R	N
MURCHWV	640727	MMC11R	N
MURCHWV	640729	MMC10R	N
MURCHWV	640730	MMC12R	N
MURCHWV	640731	MMC14R	N



## UNITED STATES DRUG TESTING LABORATORIES

1700 SOUTH MOUNT PROSPECT ROAD  
DES PLAINES, ILLINOIS 60018  
(847) 375-0770 PHONE (847) 375-0775 FAX  
WWW.USDTL.COM

MURCHWV	640732	MMC13R	N
MURCHWV	640734	MMC5R	N
MURCHWV	640735	MMC7	N
MURCHWV	640736	MMC4R	N
MURCHWV	640737	MMC2	N
MURCHWV	640739	MMC79R	N
MURCHWV	640740	MMC74R	N
MURCHWV	640743	MMC71R	N
MURCHWV	640744	MMC72R	N
MURCHWV	640745	MMC78R	N
MURCHWV	640746	MMC76R	N
MURCHWV	640747	MMC77R	N
MURCHWV	640749	MMC17	N
MURCHWV	640751	MMC23R	N
MURCHWV	640753	MMC15	N
MURCHWV	640755	MMC21R	N
MURCHWV	640756	MMC22R	N
MURCHWV	640757	MMC5	N
MURCHWV	640758	MMC9RR	N
MURCHWV	640761	MMC24R	N
MURCHWV	640762	MMC13RR	N
MURCHWV	640763	MMC6RR	N
MURCHWV	640764	MMC12RR	N
MURCHWV	640765	MMC16	N
MURCHWV	640766	MMC14RR	N
MURCHWV	641208	MMC024	N
MURCHWV	641209	MMC021	N
MURCHWV	641210	MMC022	N
MURCHWV	641212	MMC023	N
MURCHWV	641213	MMC018	N
MURCHWV	641216	MMC019	N
MURCHWV	641217	MMC025	N
MURCHWV	641218	MMC017	N
MURCHWV	641219	MMC19WH	N
MURCHWV	641221	MMC23WH	N
MURCHWV	641222	MMC16WH	N
MURCHWV	641223	MMC21WH	N
MURCHWV	641224	MMC12WH	N
MURCHWV	641225	MMC20WH	N
MURCHWV	641226	MMC28WH	N
MURCHWV	641228	MMC22WH	N
MURCHWV	641229	MMC24WH	N
MURCHWV	641230	MMC27WH	N
MURCHWV	641233	MMC15WH	N
MURCHWV	641234	MMC17WH	N
MURCHWV	641235	MMC29WH	N
MURCHWV	641236	MMC26WH	N
MURCHWV	641237	MMC30WH	N
MURCHWV	641238	MMC18WH	N



## UNITED STATES DRUG TESTING LABORATORIES

1700 SOUTH MOUNT PROSPECT ROAD  
DES PLAINES, ILLINOIS 60018  
(847) 375-0770 PHONE (847) 375-0775 FAX  
WWW.USDTL.COM

MURCHWV	645627	MMC116CAMC	N
MURCHWV	645628	MMC117CAMC	N
MURCHWV	645629	MMC118CAMC	N
MURCHWV	645630	MMC119CAMC	N
MURCHWV	645631	MMC120CAMC	N
MURCHWV	645634	MMC197CHH	N
MURCHWV	645635	MMC198CHH	N
MURCHWV	645636	MMC199CHH	N
MURCHWV	645637	MMC200CHHR	N
MURCHWV	645638	MMC201CHH	N
MURCHWV	645639	MCC202CHH	N
MURCHWV	645640	MMC203CHH	N
MURCHWV	645641	MMC204CHH	N
MURCHWV	645642	MMC205CHH	N
MURCHWV	645643	MMC206CHH	N
MURCHWV	645644	MMC207CHH	N
MURCHWV	645645	MMC208CHH	N
MURCHWV	645646	MMC209CHH	N
MURCHWV	645647	MMC210CHH	N
MURCHWV	645648	MMC211CHH	N
MURCHWV	645649	MMC212CHH	N
MURCHWV	645650	MMC213CHH	N
MURCHWV	645651	MMC214CHH	N
MURCHWV	645652	MMC215CHH	N
MURCHWV	645653	MMC216CHH	N
MURCHWV	645654	MMC217CHH	N
MURCHWV	645655	MMC218CHH	N
MURCHWV	645656	MMC219CHH	N
MURCHWV	645659	MMC57CH	N
MURCHWV	645660	MMC58CH	N
MURCHWV	645661	MMC59CH	N
MURCHWV	645662	MMC60CH	N
MURCHWV	645664	MMC62CH	N
MURCHWV	645665	MMC63CH	N
MURCHWV	645667	MMC65CH	N
MURCHWV	645668	MMC66CH	N
MURCHWV	645669	MMC67CH	N
MURCHWV	645670	MMC68CH	N
MURCHWV	645671	MMC69CH	N
MURCHWV	645672	MMC70CH	N
MURCHWV	645673	MMC71CH	N
MURCHWV	645674	MMC72CH	N
MURCHWV	645675	MMC25BRMC	N
MURCHWV	645676	MMC26BRMC	N
MURCHWV	645678	MMC28BRMC	N
MURCHWV	645679	MMC29BRMC	N
MURCHWV	645680	MMC30BRMC	N
MURCHWV	645683	MMC33BRMC	N
MURCHWV	645684	MMC34BRMC	N



## UNITED STATES DRUG TESTING LABORATORIES

1700 SOUTH MOUNT PROSPECT ROAD  
DES PLAINES, ILLINOIS 60018  
(847) 375-0770 PHONE (847) 375-0775 FAX  
WWW.USDTL.COM

MURCHWV	645685	MMC35BRMC	N
MURCHWV	645686	MMC31TMH	N
MURCHWV	645687	MMC32TMH	N
MURCHWV	645688	MMC33TMH	N
MURCHWV	645689	MMC34TMH	N
MURCHWV	645690	MMC35TMH	N
MURCHWV	645692	MMC37TMH	N
MURCHWV	645693	MMC38TMH	N
MURCHWV	645694	MMC39TMH	N
MURCHWV	645695	MMC40TMH	N
MURCHWV	645696	MMC41TMH	N
MURCHWV	645697	MMC42TMH	N
MURCHWV	645698	MMC48RGH	N
MURCHWV	645699	MMC49RGH	N
MURCHWV	645700	MMC50RGH	N
MURCHWV	645701	MMC51RGH	N
MURCHWV	645702	MMC52RGH	N
MURCHWV	645703	MMC53RGH	N
MURCHWV	645704	MMC54RGH	N
MURCHWV	645705	MMC55RGH	N
MURCHWV	645706	MMC56RGH	N
MURCHWV	645707	MMC57RGH	N
MURCHWV	645708	MMC58RGH	N
MURCHWV	645709	MMC59RGH	N
MURCHWV	645710	MMC60RGH	N
MURCHWV	645711	MMC61RGH	N
MURCHWV	645713	MMC63RGH	N
MURCHWV	645714	MMC64RGH	N
MURCHWV	645715	MMC65RGH	N
MURCHWV	645717	MMC66RGH	N
MURCHWV	645718	MMC68RGH	N
MURCHWV	645720	MMC70RGH	N
MURCHWV	645721	MMC71RGH	N
MURCHWV	645723	MMC124CAMC	N
MURCHWV	645724	MMC125CAMC	N
MURCHWV	645725	MMC126CAMC	N
MURCHWV	645727	MMC128CAMC	N
MURCHWV	645728	MMC129CAMC	N
MURCHWV	641588	MMC16TMH	N
MURCHWV	641590	MMC15TMH	N
MURCHWV	641596	MMC18TMH	N
MURCHWV	641597	MMC24TMH	N
MURCHWV	641599	MMC21TMH	N
MURCHWV	641600	MMC19TMH	N
MURCHWV	641603	MMC23TMH	N
MURCHWV	641606	MMC22TMH	N
MURCHWV	641608	MMC30TMH	N
MURCHWV	641609	MMC28TMH	N
MURCHWV	641611	MMC20TMH	N



## UNITED STATES DRUG TESTING LABORATORIES

1700 SOUTH MOUNT PROSPECT ROAD  
DES PLAINES, ILLINOIS 60018  
(847) 375-0770 PHONE (847) 375-0775 FAX  
WWW.USDTL.COM

MURCHWV	641613	MMC26TMH	N
MURCHWV	641615	MMC29TMH	N
MURCHWV	641619	MMC27TMH	N
MURCHWV	641623	MMC82CAMC	N
MURCHWV	641624	MMC83CAMC	N
MURCHWV	641626	MMC84CAMC	N
MURCHWV	641627	MMC85CAMC	N
MURCHWV	641628	MMC86CAMC	N
MURCHWV	641629	MMC87CAMC	N
MURCHWV	641631	MMC88CAMC	N
MURCHWV	641633	MMC89CAMC	N
MURCHWV	641634	MMC90CAMC	N
MURCHWV	641636	MMC91CAMC	N
MURCHWV	641640	MMC93CAMC	N
MURCHWV	641647	MMC94CAMC	N
MURCHWV	641648	MMC95CAMC	N
MURCHWV	641649	MMC96CAMC	N
MURCHWV	641651	MMC97CAMC	N
MURCHWV	641652	MMC98CAMC	N
MURCHWV	641666	MMC115CHH	N
MURCHWV	641667	MMC116CHH	N
MURCHWV	641669	MMC117CHH	N
MURCHWV	641671	MMC119CHH	N
MURCHWV	641674	MMC123CHH	N
MURCHWV	641675	MMC124CHH	N
MURCHWV	641677	MMC126CHH	N
MURCHWV	641678	MMC127CHH	N
MURCHWV	641679	MMC128CHH	N
MURCHWV	641680	MMC129CHH	N
MURCHWV	641681	MMC130CHH	N
MURCHWV	641683	MMC132CHH	N
MURCHWV	641684	MMC133CHH	N
MURCHWV	641685	MMC134CHH	N
MURCHWV	641687	MMC136CHH	N
MURCHWV	641688	MMC137CHH	N
MURCHWV	641689	MMC138CHH	N
MURCHWV	641690	MMC139CHH	N
MURCHWV	641692	MMC141CHH	N
MURCHWV	641693	MMC142CHH	N
MURCHWV	641694	MMC143CHH	N
MURCHWV	643868	MMC26RMH	N
MURCHWV	643869	MMC27RMH	N
MURCHWV	643870	MMC28RMH	N
MURCHWV	643871	MMC29RMH	N
MURCHWV	643872	MMC30RMH	N
MURCHWV	643873	MMC31RMH	N
MURCHWV	643875	MMC32RMH	N
MURCHWV	643877	MMC33RMH	N
MURCHWV	643878	MMC34RMH	N



**UNITED STATES DRUG TESTING LABORATORIES**

1700 SOUTH MOUNT PROSPECT ROAD  
DES PLAINES, ILLINOIS 60018  
(847) 375-0770 PHONE (847) 375-0775 FAX  
WWW.USDTL.COM

MURCHWV	643880	MMC35RMH	N
MURCHWV	643882	MMC36RMH	N
MURCHWV	643883	MMC37RMH	N
MURCHWV	643885	MMC32WH	N
MURCHWV	643887	MMC33WH	N
MURCHWV	643890	MMC34WH	N
MURCHWV	643891	MMC35WH	N
MURCHWV	643897	MMC36WH	N
MURCHWV	643899	MMC38WH	N
MURCHWV	643900	MMC39WH	N
MURCHWV	643903	MMC40WH	N
MURCHWV	643904	MMC41WH	N
MURCHWV	643909	MMC42WH	N
MURCHWV	643910	MMC43WH	N

644 rows  
selected



**UNITED STATES DRUG TESTING LABORATORIES**  
1700 SOUTH MOUNT PROSPECT ROAD  
DES PLAINES, ILLINOIS 60018  
(847) 375-0770 PHONE (847) 375-0775 FAX  
WWW.USDTL.COM

## **APPENDIX A**







HSN	PETH	SSN	FINAL_RESULT	LOCATION	PETH	HSN	CS7	SSN	FINAL	Site code	AMP	COC	OPI	THC	BZP	MTD	BUP					
652070		MMC202CHH	N	CHH	0	645639		MCC202CHH	N	CHH	N	N	N	N	N	N	N					
651167		MMC01	N	WH	0	639135		MMC01	N	RMH	N	N	N	N	N	N	N					
651171		MMC010	N	WH	0	639136		MMC010	N	RMH	N	N	N	N	N	N	N					
651160		MMC011	N	WH	0	639128		MMC011	N	RMH	N	N	N	N	N	N	N					
651384		MMC015	N	RMH	0	641214		MMC015	P	RMH				P					Codeine	9.2	Morphine	2.7
651385		MMC016	N	RMH	0	641215		MMC016	P	RMH				P					Codeine	8.1	Morphine	2.9
651388		MMC017	N	RMH	0	641218		MMC017	N	RMH	N	N	N	N	N	N	N					
651383		MMC018	N	RMH	0	641213		MMC018	N	RMH	N	N	N	N	N	N	N					
651386		MMC019	N	RMH	0	641216		MMC019	N	RMH	N	N	N	N	N	N	N					
651152		MMC02	N	RMH	0	639103		MMC02	N	RMH	N	N	N	N	N	N	N					
651381		MMC020	N	RMH	0	641211		MMC020	P	RMH					P				Diazepam	3.3		
651379		MMC021	N	RMH	0	641209		MMC021	N	RMH	N	N	N	N	N	N	N					
651380		MMC022	N	RMH	0	641210		MMC022	N	RMH	N	N	N	N	N	N	N					
651382		MMC023	N	RMH	0	641212		MMC023	N	RMH	N	N	N	N	N	N	N					
651378		MMC024	N	RMH	0	641208		MMC024	N	RMH	N	N	N	N	N	N	N					
651387		MMC025	N	RMH	0	641217		MMC025	N	RMH	N	N	N	N	N	N	N					
651158		MMC02RP	N	WH	0	639117		MMC02R	N	RMH	N	N	N	N	N	N	N					
651155		MMC03	N	WH	0	639106		MMC03	N	RMH	N	N	N	N	N	N	N					
651159		MMC04	N	WH	0	639126		MMC04	N	RMH	N	N	N	N	N	N	N					
651153		MMC05	N	RMH	0	639104		MMC05	N	RMH	N	N	N	N	N	N	N					
651162		MMC05R	N	WH	0	639133		MMC05R	N	RMH	N	N	N	N	N	N	N					
651161		MMC06	N	WH	0	639127		MMC06	N	RMH	N	N	N	N	N	N	N					
651154		MMC07	N	RMH	0	639105		MMC07	N	RMH	N	N	N	N	N	N	N					
651156		MMC07R	N	WH	0	639111		MMC07R	N	WH	N	N	N	N	N	N	N					
651157		MMC08	N	WH	0	639116		MMC08	N	RMH	N	N	N	N	N	N	N					
651166		MMC09P	N	WH	0	639134		MMC09	N	WH	N	N	N	N	N	N	N					
651142		MMC1	N	RMH	0	639093		MMC1	N	WH	N	N	N	N	N	N	N					
651145		MMC10	N	RMH	0	639096		MMC10	N	WH	N	N	N	N	N	N	N					
651238		MMC100	N	CHH	0	640306		MMC100	N	CHH	N	N	N	N	N	N	N					
651920		MMC100CAMC	P	CAMC	17	642871		MMC100CAMC	N	CAMC	N	N	N	N	N	N	N					
651235		MMC101	N	CHH	0	640303		MMC101	P	CHH				P					Hydrocodone	3.8		
651923		MMC101CAMC	N	CAMC	0	642874		MMC101CAMC	N	CAMC	N	N	N	N	N	N	N					
651242		MMC102	N	CHH	0	640310		MMC102	N	CHH	N	N	N	N	N	N	N					
651219		MMC103	N	CHH	0	640291		MMC103	N	CHH	N	N	N	N	N	N	N					
651910		MMC103CAMC	N	CAMC	0	642861		MMC103CAMC	N	CAMC	N	N	N	N	N	N	N					
651250		MMC104	N	CHH	0	640318		MMC104	N	CHH	N	N	N	N	N	N	N					
651909		MMC104CAMC	N	CAMC	0	642860		MMC104CAMC	N	CAMC	N	N	N	N	N	N	N					
651245		MMC105	N	CHH	0	640313		MMC105	N	CHH	N	N	N	N	N	N	N					
651919		MMC105CAMC	N	CAMC	0	642870		MMC105CAMC	N	CAMC	N	N	N	N	N	N	N					
651220		MMC106	N	CHH	0	640292		MMC106	N	CHH	N	N	N	N	N	N	N					
651914		MMC106CAMC	N	CAMC	0	642865		MMC106CAMC	N	CAMC	N	N	N	N	N	N	N					
651236		MMC107	N	CHH	0	640304		MMC107	P	CHH				P					THCA	290		
651915		MMC107CAMC	N	CAMC	0	642866		MMC107CAMC	N	CAMC	N	N	N	N	N	N	N					
651224		MMC108	N	CHH	0	640296		MMC108	N	CHH	N	N	N	N	N	N	N					
651928		MMC108CAMC	N	CAMC	0	642880		MMC108CAMC	P	CAMC						P			EDDP	75	Methadone	177
651254		MMC109	N	CHH	0	640323		MMC109	P	CHH					P	P			Alprazolam	2.2	THCA	1395
651912		MMC109CAMC	N	CAMC	0	642863		MMC109CAMC	N	CAMC	N	N	N	N	N	N	N					
651470		MMC10BRMC	N	BRMC	0	641643		MMC10BRMC	N	BRMC	N	N	N	N	N	N	N					
651917		MMC102CAMC	N	CAMC	0	642868		MMC102CAMC	N	CAMC	N	N	N	N	N	N	N					
651334		MMC10R	N	TMH	0	640729		MMC10R	N	TM	N	N	N	N	N	N	N					
651375		MMC10RR	N	RGH	0	640770		MMC10RR	P	RGH					P				THCA	111		
651146		MMC11	N	RMH	0	639097		MMC11	N	WH	N	N	N	N	N	N	N					
651248		MMC110	N	CHH	0	640316		MMC110	N	CHH	N	N	N	N	N	N	N					
651921		MMC110CAMC	N	CAMC	0	642872		MMC110CAMC	N	CAMC	N	N	N	N	N	N	N					
651223		MMC111	N	CHH	0	640295		MMC111	N	CHH	N	N	N	N	N	N	N					
651913		MMC111CAMC	N	CAMC	0	642864		MMC111CAMC	N	CAMC	N	N	N	N	N	N	N					
651222		MMC112	N	CHH	0	640294		MMC112	P	CHH				P					Morphine	5.5		
651927		MMC112CAMC	N	CAMC	0	642879		MMC112CAMC	N	CAMC	N	N	N	N	N	N	N					





HSN	PETH	SSN	FINAL_RESULT	LOCATION	PETH	HSN	CS7	SSN	FINAL	Site code	AMP	COC	OPI	THC	BZP	MTD	BUP				
652005	MMC170	CHH	N	CHH	0	643876		MMC170	CHH	N	N	N	N	N	N	N	N				
652024	MMC180	CHH	N	CHH	0	643895		MMC180	CHH	N	N	N	N	N	N	N	N				
652025	MMC181	CHH	N	CHH	0	643896		MMC181	CHH	N	N	N	N	N	N	N	N				
652033	MMC182	CHH	N	CHH	0	643901		MMC182	CHH	P			P					Hydrocodo	16.7	Morphine	10.3
652037	MMC183	CHH	N	CHH	0	643902		MMC183	CHH	N	N	N	N	N	N	N	N				
652040	MMC184	CHH	N	CHH	0	643905		MMC184	CHH	N	N	N	N	N	N	N	N				
652041	MMC185	CHH	N	CHH	0	643906		MMC185	CHH	N	N	N	N	N	N	N	N				
652042	MMC186	CHH	N	CHH	0	643907		MMC186	CHH	N	N	N	N	N	N	N	N				
652043	MMC187	CHH	N	CHH	0	643908		MMC187	CHH	N	N	N	N	N	N	N	N				
652046	MMC188	CHH	N	CHH	0	643911		MMC188	CHH	N	N	N	N	N	N	N	N				
652047	MC189	CHH	N	CHH	0	643912		MMC189	CHH	N	N	N	N	N	N	N	N				
651483	MMC18	BRMC	N	BRMC	0	641656		MMC18	BRMC	N	N	N	N	N	N	N	N				
651373	MMC18	R	N	RGH	0	640768		MMC18	R	P				P				THCA		939	
651423	MMC18	TMH	N	TMH	0	641596		MMC18	TMH	N	N	N	N	N	N	N	N				
651408	MMC18	WH	N	WH	0	641238		MMC18	WH	N	N	N	N	N	N	N	N				
651377	MMC19	R	N	RGH	0	640772		MMC19	R	P				P				THCA		684	
652048	MMC190	CHH	N	CHH	0	643913		MMC190	CHH	N	N	N	N	N	N	N	N				
652049	MMC191	CHH	N	CHH	0	643914		MMC191	CHH	N	N	N	N	N	N	N	N				
652050	MMC192	CHH	N	CHH	0	643915		MMC192	CHH	N	N	N	N	N	N	N	N				
652051	MMC193	CHH	N	CHH	0	643916		MMC193	CHH	N	N	N	N	N	N	N	N				
652052	MMC194	CHH	N	CHH	0	643917		MMC194	CHH	N	N	N	N	N	N	N	N				
652053	MMC195	CHH	N	CHH	0	643918		MMC195	CHH	N	N	N	N	N	N	N	N				
652054	MMC196	CHH	N	CHH	0	643919		MMC196	CHH	N	N	N	N	N	N	N	N				
652065	MMC197	CHH	N	CHH	0	645634		MMC197	CHH	N	N	N	N	N	N	N	N				
652066	MMC198	CHH	P	CHH	48	645635		MMC198	CHH	N	N	N	N	N	N	N	N				
652067	MMC199	CHH	N	CHH	0	645636		MMC199	CHH	N	N	N	N	N	N	N	N				
651484	MMC19	BRMC	N	BRMC	0	641657		MMC19	BRMC	N	N	N	N	N	N	N	N				
651427	MMC19	TMH	N	TMH	0	641600		MMC19	TMH	N	N	N	N	N	N	N	N				
651389	MMC19	WH	N	WH	0	641219		MMC19	WH	N	N	N	N	N	N	N	N				
651447	MMC1	BRMC	N	BRMC	0	641620		MMC1	BRMC	N	N	N	N	N	N	N	N				
651338	MMC1	R	N	TMH	0	640733		MMC1	R	P				P				THCA		642	
651364	MMC1	R	N	RGH	0	640759		MMC1	R	P				P				THCA		1205	
651342	MMC2	R	N	TMH	0	640737		MMC2	R	N	N	N	N	N	N	N	N				
651264	MMC20	R	N	CH	0	640658		MMC20	R	N	N	N	N	N	N	N	N				
652068	MMC200	CHH	N	CHH	0	645637		MMC200	CHH	N	N	N	N	N	N	N	N				
652069	MMC201	CHH	N	CHH	0	645638		MMC201	CHH	N	N	N	N	N	N	N	N				
652091	MMC203	CHH	N	CHH	0	645640		MMC203	CHH	N	N	N	N	N	N	N	N				
652092	MMC204	CHH	N	CHH	0	645641		MMC204	CHH	N	N	N	N	N	N	N	N				
652093	MMC205	CHH	N	CHH	0	645642		MMC205	CHH	N	N	N	N	N	N	N	N				
652094	MMC206	CHH	N	CHH	0	645643		MMC206	CHH	N	N	N	N	N	N	N	N				
652095	MMC207	CHH	N	CHH	0	645644		MMC207	CHH	N	N	N	N	N	N	N	N				
652096	MMC208	CHH	N	CHH	0	645645		MMC208	CHH	N	N	N	N	N	N	N	N				
652097	MMC209	CHH	N	CHH	0	645646		MMC209	CHH	N	N	N	N	N	N	N	N				
651452	MMC20	BRMC	N	BRMC	0	641625		MMC20	BRMC	P				P				Diazepam	3.5	Nordiazepam	5
651438	MMC20	TMH	N	TMH	0	641611		MMC20	TMH	N	N	N	N	N	N	N	N				
651395	MMC20	WH	N	WH	0	641225		MMC20	WH	N	N	N	N	N	N	N	N				
651262	MMC21	R	N	CH	0	640656		MMC21	R	N	N	N	N	N	N	N	N				
652098	MMC210	CHH	N	CHH	0	645647		MMC210	CHH	N	N	N	N	N	N	N	N				
652099	MMC211	CHH	N	CHH	0	645648		MMC211	CHH	N	N	N	N	N	N	N	N				
652100	MMC212	CHH	N	CHH	0	645649		MMC212	CHH	N	N	N	N	N	N	N	N				
652101	MMC213	CHH	N	CHH	0	645650		MMC213	CHH	N	N	N	N	N	N	N	N				
652102	MMC214	CHH	N	CHH	0	645651		MMC214	CHH	N	N	N	N	N	N	N	N				
652103	MMC215	CHH	N	CHH	0	645652		MMC215	CHH	N	N	N	N	N	N	N	N				
652104	MMC216	CHH	N	CHH	0	645653		MMC216	CHH	N	N	N	N	N	N	N	N				
652105	MMC217	CHH	N	CHH	0	645654		MMC217	CHH	N	N	N	N	N	N	N	N				
652106	MMC218	CHH	N	CHH	0	645655		MMC218	CHH	N	N	N	N	N	N	N	N				
652107	MMC219	CHH	N	CHH	44	645656		MMC219	CHH	N	N	N	N	N	N	N	N				
651485	MMC21	BRMC	N	BRMC	0	641658		MMC21	BRMC	N	N	N	N	N	N	N	N				

HSN	PETH	SSN	FINAL_RESULT	LOCATION	PETH	HSN	CS7	SSN	FINAL	Site code	AMP	COC	OPI	THC	BZP	MTD	BUP				
651360		MMC21R	N	RGH	0 640755	MMC21R		N	RGH	N	N	N	N	N	N	N	N				
651426		MMC21TMH	N	TMH	0 641599	MMC21TMH		N	TMH	N	N	N	N	N	N	N	N				
651393		MMC21WH	N	WH	0 641223	MMC21WH		N	WH	N	N	N	N	N	N	N	N				
651261		MMC22	N	CH	0 640655	MMC22		N	CH	N	N	N	N	N	N	N	N				
652108		MMC220CHH	N	CHH	0 645657	MMC220CHH		P	CHH				P					Morphine	8.5		
652278		MMC221CHH	N	CHH	0 646437	MMC221CHH		P	CHH						P			Diazepam	3		Nordiazepa 15.5
652268		MMC222CHH	N	CHH	0 646406	MMC222CHH		P	CHH					P				THCA	2556		
652275		MMC223CHH	N	CHH	0 646434	MMC223CHH		N	CHH	N	N	N	N	N	N	N	N				
652269		MMC224CHH	N	CHH	0 646407	MMC224CHH		N	CHH	N	N	N	N	N	N	N	N				
652279		MMC225CHH	N	CHH	0 646438	MMC225CHH		N	CHH	N	N	N	N	N	N	N	N				
652273		MMC226CHH	N	CHH	0 646416	MMC226CHH		N	CHH	N	N	N	N	N	N	N	N				
652282		MMC227CHH	N	CHH	0 646441	MMC227CHH		N	CHH	N	N	N	N	N	N	N	N				
652288		MMC228CHH	N	CHH	0 646451	MMC228CHH		N	CHH	N	N	N	N	N	N	N	N				
652271		MMC229CHH	N	CHH	0 646414	MMC229CHH		N	CHH	N	N	N	N	N	N	N	N				
651486		MMC22BRMC	N	BRMC	8 641659	MMC22BRMC		N	BRMC	N	N	N	N	N	N	N	N				
651361		MMC22R	N	RGH	0 640756	MMC22R		N	RGH	N	N	N	N	N	N	N	N				
651433		MMC22TMH	N	TMH	0 641606	MMC22TMH		N	TMH	N	N	N	N	N	N	N	N				
651398		MMC22WH	N	WH	0 641228	MMC22WH		N	WH	N	N	N	N	N	N	N	N				
651276		MMC23	N	CH	0 640674	MMC23		N	CH	N	N	N	N	N	N	N	N				
652285		MMC230CHH	N	CHH	0 646448	MMC230CHH		P	CHH					P				THCA	2953		
652283		MMC231CHH	N	CHH	0 646446	MMC231CHH		N	CHH	N	N	N	N	N	N	N	N				
652286		MMC232CHH	N	CHH	0 646449	MMC232CHH		N	CHH	N	N	N	N	N	N	N	N				
652270		MMC233CHH	N	CHH	0 646413	MMC233CHH		N	CHH	N	N	N	N	N	N	N	N				
652277		MMC234CHH	N	CHH	0 646436	MMC234CHH		N	CHH	N	N	N	N	N	N	N	N				
652263		MMC235CHH	N	CHH	0 646401	MMC235CHH		N	CHH	N	N	N	N	N	N	N	N				
652276		MMC236CHH	N	CHH	0 646435	MMC236CHH		N	CHH	N	N	N	N	N	N	N	N				
652287		MMC237CHH	N	CHH	0 646450	MMC237CHH		N	CHH	N	N	N	N	N	N	N	N				
652265		MMC238CHH	N	CHH	0 646403	MMC238CHH		N	CHH	N	N	N	N	N	N	N	N				
652289		MMC239CHH	N	CHH	0 646452	MMC239CHH		N	CHH	N	N	N	N	N	N	N	N				
651487		MMC23BRMC	N	BRMC	0 641660	MMC23BRMC		P	BRMC							P		EDDP	52		Methadone 83
651356		MMC23R	N	RGH	0 640751	MMC23R		N	RGH	N	N	N	N	N	N	N	N				
651430		MMC23TMH	N	TMH	0 641603	MMC23TMH		N	TMH	N	N	N	N	N	N	N	N				
651391		MMC23WH	N	WH	0 641221	MMC23WH		N	WH	N	N	N	N	N	N	N	N				
651260		MMC24	N	CH	0 640654	MMC24		N	CH	N	N	N	N	N	N	N	N				
652266		MMC240CHH	N	CHH	0 646404	MMC240CHH		N	CHH	N	N	N	N	N	N	N	N				
652281		MMC241CHH	N	CHH	0 646440	MMC241CHH		N	CHH	N	N	N	N	N	N	N	N				
652274		MMC242CHH	N	CHH	0 646421	MMC242CHH		N	CHH	N	N	N	N	N	N	N	N				
652264		MMC243CHH	N	CHH	0 646402	MMC243CHH		N	CHH	N	N	N	N	N	N	N	N				
652280		MMC244CHH	N	CHH	0 646439	MMC244CHH		N	CHH	N	N	N	N	N	N	N	N				
652284		MMC245CHH	N	CHH	0 646447	MMC245CHH		N	CHH	N	N	N	N	N	N	N	N				
652267		MMC246CHH	N	CHH	0 646405	MMC246CHH		N	CHH	N	N	N	N	N	N	N	N				
652272		MMC247CHH	N	CHH	0 646415	MMC247CHH		P	CHH				P	P				Hydrocodo	3		THCA 1970
651449		MMC24BRMC	N	BRMC	0 641622	MMC24BRMC		N	BRMC	N	N	N	N	N	N	N	N				
651366		MMC24R	N	RGH	0 640761	MMC24R		N	RGH	N	N	N	N	N	N	N	N				
651424		MMC24TMH	N	TMH	8 641597	MMC24TMH		N	TMH	N	N	N	N	N	N	N	N				
651399		MMC24WH	P	WH	105 641229	MMC24WH		N	WH	N	N	N	N	N	N	N	N				
651258		MMC25	N	CH	0 640652	MMC25		N	CH	N	N	N	N	N	N	N	N				
652126		MMC25BRMC	N	BRMC	0 645675	MMC25BRMC		N	BRMC	N	N	N	N	N	N	N	N				
651355		MMC25R	N	RGH	0 640750	MMC25R		P	RGH					P				THCA	2311		
651420		MMC25TMH	N	TMH	0 641593	MMC25TMH		P	TMH						P			THCA	167		
651390		MMC25WH	N	WH	0 641220	MMC25WH		P	WH							P		EDDP	8.1		Methadone 35.6
651267		MMC26	N	CH	0 640661	MMC26		N	CH	N	N	N	N	N	N	N	N				
652127		MMC26BRMC	N	BRMC	0 645676	MMC26BRMC		N	BRMC	N	N	N	N	N	N	N	N				
651411		MMC26RGH	N	RGH	0 641572	MMC26RGH		N	RGH	N	N	N	N	N	N	N	N				
651994		MMC26RMH	N	RMH	0 643868	MMC26RMH		N	RMH	N	N	N	N	N	N	N	N				
651440		MMC26TMH	N	TMH	0 641613	MMC26TMH		N	TMH	N	N	N	N	N	N	N	N				
651406		MMC26WH	N	WH	0 641236	MMC26WH		N	WH	N	N	N	N	N	N	N	N				
651269		MMC27	N	CH	0 640663	MMC27		N	CH	N	N	N	N	N	N	N	N				

HSN	PETH	SSN	FINAL_RESULT	LOCATION	PETH	HSN	CS7	SSN	FINAL	Site code	AMP	COC	OPI	THC	BZP	MTD	BDP			
652128	MMC27BRMC	N	BRMC	0 645677	MMC27BRMC	P	BRMC											EDDP	22	Methadone 52
651412	MMC27RGH	N	RGH	0 641573	MMC27RGH	N	RGH	N	N	N	N	N	N	N	N	N	N			
651995	MMC27RMH	N	RMH	0 643869	MMC27RMH	N	RMH	N	N	N	N	N	N	N	N	N	N			
651446	MMC27TMH	N	TMH	0 641619	MMC27TMH	N	TMH	N	N	N	N	N	N	N	N	N	N			
651400	MMC27WH	N	WH	0 641230	MMC27WH	N	WH	N	N	N	N	N	N	N	N	N	N			
651266	MMC28	N	CH	0 640660	MMC28	N	CH	N	N	N	N	N	N	N	N	N	N			
652129	MMC28BRMC	N	BRMC	0 645678	MMC28BRMC	N	BRMC	N	N	N	N	N	N	N	N	N	N			
651416	MMC28RGH	N	RGH	0 641589	MMC28RGH	P	BRGH								P			Diazepam	4.1	Nordiazepam 31.9
651996	MMC28RMH	N	RMH	0 643870	MMC28RMH	N	RMH	N	N	N	N	N	N	N	N	N	N			
651436	MMC28TMH	N	TMH	0 641609	MMC28TMH	N	TMH	N	N	N	N	N	N	N	N	N	N			
651396	MMC28WH	N	WH	0 641226	MMC28WH	N	WH	N	N	N	N	N	N	N	N	N	N			
651257	29R	N	CH	0 640651	MMC29	N	CH	N	N	N	N	N	N	N	N	N	N			
652130	MMC29BRMC	N	BRMC	0 645679	MMC29BRMC	N	BRMC	N	N	N	N	N	N	N	N	N	N			
651320	MMC29R	N	CAMC	0 640715	MMC29R	N	CAMC	N	N	N	N	N	N	N	N	N	N			
651419	MMC29RGH	N	RGH	0 641592	MMC29RGH	N	RGH	N	N	N	N	N	N	N	N	N	N			
651997	MMC29RMH	N	RMH	0 643871	MMC29RMH	N	RMH	N	N	N	N	N	N	N	N	N	N			
651442	MMC29TMH	N	TMH	0 641615	MMC29TMH	N	TMH	N	N	N	N	N	N	N	N	N	N			
651405	MMC29WH	N	WH	0 641235	MMC29WH	N	WH	N	N	N	N	N	N	N	N	N	N			
651457	MMC2BRMC	N	BRMC	0 641630	MMC2BRMC	N	BRMC	N	N	N	N	N	N	N	N	N	N			
651372	MMC2R	N	RGH	0 640767	MMC2R	P	RGH								P			THCA	491	
651151	MMC3	N	RMH	0 639102	MMC3	N	WH	N	N	N	N	N	N	N	N	N	N			
651265	MMC30	N	CH	0 640659	MMC30	N	CH	N	N	N	N	N	N	N	N	N	N			
652131	MMC30BRMC	N	BRMC	0 645680	MMC30BRMC	N	BRMC	N	N	N	N	N	N	N	N	N	N			
651287	MMC30R	N	CAMC	0 640698	MMC30R	N	CAMC	N	N	N	N	N	N	N	N	N	N			
651439	MMC30RGH	N	RGH	0 641612	MMC30RGH	N	RGH	N	N	N	N	N	N	N	N	N	N			
651998	MMC30RMH	N	RMH	0 643872	MMC30RMH	N	RMH	N	N	N	N	N	N	N	N	N	N			
651435	MMC30TMH	N	TMH	0 641608	MMC30TMH	N	TMH	N	N	N	N	N	N	N	N	N	N			
651407	MMC30WH	N	WH	0 641237	MMC30WH	N	WH	N	N	N	N	N	N	N	N	N	N			
651268	MMC31	P	CH	6 640662	MMC31	P	CH								P			EDDP	63	Methadone 64
652132	MMC31BRMC	N	BRMC	0 645681	MMC31BRMC	P	BRMC								P			Alprazolam 4		
651312	MMC31R	N	CAMC	0 640707	MMC31R	N	CAMC	N	N	N	N	N	N	N	N	N	N			
651432	MMC31RGH	N	RGH	0 641605	MMC31RGH	N	RGH	N	N	N	N	N	N	N	N	N	N			
651999	MMC31RMH	N	RMH	0 643873	MMC31RMH	N	RMH	N	N	N	N	N	N	N	N	N	N			
652137	MMC31TMH	N	TMH	0 645686	MMC31TMH	N	TMH	N	N	N	N	N	N	N	N	N	N			
651401	MMC31WH	N	WH	0 641231	MMC31WH	P	WH								P			THCA	994	
651275	MMC32	N	CH	0 640673	MMC32	N	CH	N	N	N	N	N	N	N	N	N	N			
652133	MMC32BRMC	N	BRMC	0 645682	MMC32BRMC	P	BRMC								P			THCA	2261	
651288	MMC32R	N	CAMC	0 640699	MMC32R	N	CAMC	N	N	N	N	N	N	N	N	N	N			
651418	MMC32RGH	N	RGH	0 641591	MMC32RGH	N	RGH	N	N	N	N	N	N	N	N	N	N			
652004	MMC32RMH	N	RMH	0 643875	MMC32RMH	N	RMH	N	N	N	N	N	N	N	N	N	N			
652138	MMC32TMH	N	TMH	0 645687	MMC32TMH	N	TMH	N	N	N	N	N	N	N	N	N	N			
652014	MMC32WH	N	WH	0 643885	MMC32WH	N	WH	N	N	N	N	N	N	N	N	N	N			
651271	MMC33	N	CH	0 640665	MMC33	N	CH	N	N	N	N	N	N	N	N	N	N			
652134	MMC33BRMC	N	BRMC	0 645683	MMC33BRMC	N	BRMC	N	N	N	N	N	N	N	N	N	N			
651323	MMC33R	N	CAMC	0 640718	MMC33R	N	CAMC	N	N	N	N	N	N	N	N	N	N			
651445	MMC33RGH	N	RGH	0 641618	MMC33RGH	N	RGH	N	N	N	N	N	N	N	N	N	N			
652006	MMC33RMH	N	RMH	0 643877	MMC33RMH	N	RMH	N	N	N	N	N	N	N	N	N	N			
651329	MMC33RR	N	TMH	0 640724	MMC33RR	N	CAMC	N	N	N	N	N	N	N	N	N	N			
652139	MMC33TMH	P	TMH	5 645688	MMC33TMH	N	TMH	N	N	N	N	N	N	N	N	N	N			
652016	MMC33WH	N	WH	0 643887	MMC33WH	N	WH	N	N	N	N	N	N	N	N	N	N			
651274	MMC34	N	CH	0 640672	MMC34	N	CH	N	N	N	N	N	N	N	N	N	N			
652135	MMC34BRMC	N	BRMC	0 645684	MMC34BRMC	N	BRMC	N	N	N	N	N	N	N	N	N	N			
651278	MMC34R	N	CAMC	0 640689	MMC34R	N	CAMC	N	N	N	N	N	N	N	N	N	N			
651429	MMC34RGH	N	RGH	0 641602	MMC34RGH	N	RGH	N	N	N	N	N	N	N	N	N	N			
652007	MMC34RMH	N	RMH	0 643878	MMC34RMH	N	RMH	N	N	N	N	N	N	N	N	N	N			
652140	MMC34TMH	N	TMH	0 645689	MMC34TMH	N	TMH	N	N	N	N	N	N	N	N	N	N			
652019	MMC34WH	N	WH	0 643890	MMC34WH	N	WH	N	N	N	N	N	N	N	N	N	N			
651270	MMC35	N	CH	0 640664	MMC35	N	CH	N	N	N	N	N	N	N	N	N	N			



HSN	PETH	SSN	FINAL_RESULT	LOCATION	PETH	HSN	CS7	SSN	FINAL	Site code	AMP	COC	OPI	THC	BZP	MTD	BUP				
652136	MMC35BRMC	N	BRMC	0	645685	MMC35BRMC	N	BRMC	N	N	N	N	N	N	N	N	N				
651281	MMC35R	N	CAMC	0	640692	MMC35R	N	CAMC	N	N	N	N	N	N	N	N	N				
651443	MMC35RGH	N	RGH	0	641616	MMC35RGH	P	RGH					P					Codeine	54.8	Morphine	3.1
652009	MMC35RMH	N	RMH	0	643880	MMC35RMH	N	RMH	N	N	N	N	N	N	N	N	N				
652141	MMC35TMH	N	TMH	0	645690	MMC35TMH	N	TMH	N	N	N	N	N	N	N	N	N				
652020	MMC35WH	N	WH	0	643891	MMC35WH	N	WH	N	N	N	N	N	N	N	N	N				
651273	MMC36	N	CH	0	640671	MMC36	N	CH	N	N	N	N	N	N	N	N	N				
652208	MMC36BRMC	N	BRMC	0	646344	MMC36BRMC	N	BRMC	N	N	N	N	N	N	N	N	N				
651279	MMC36R	N	CAMC	0	640690	MMC36R	N	CAMC	N	N	N	N	N	N	N	N	N				
651410	MMC36RGH	N	RGH	0	641571	MMC36RGH	N	RGH	N	N	N	N	N	N	N	N	N				
652011	MMC36RMH	N	RMH	0	643882	MMC36RMH	N	RMH	N	N	N	N	N	N	N	N	N				
652142	MMC36TMH	N	TMH	0	645691	MMC36TMH	P	TMH					P					THCA	10450		
652029	MMC36WH	P	WH	35	643897	MMC36WH	N	WH	N	N	N	N	N	N	N	N	N				
651259	MMC37	N	CH	0	640653	MMC37	N	CH	N	N	N	N	N	N	N	N	N				
652210	MMC37BRMC	N	BRMC	0	646346	MMC37BRMC	N	BRMC	N	N	N	N	N	N	N	N	N				
651322	MMC37R	N	CAMC	0	640717	MMC37R	N	CAMC	N	N	N	N	N	N	N	N	N				
651421	MMC37RGH	N	RGH	0	641594	MMC37RGH	N	RGH	N	N	N	N	N	N	N	N	N				
652012	MMC37RMH	N	RMH	0	643883	MMC37RMH	N	RMH	N	N	N	N	N	N	N	N	N				
652143	MMC37TMH	N	TMH	0	645692	MMC37TMH	N	TMH	N	N	N	N	N	N	N	N	N				
652030	MMC37WH	N	WH	0	643898	MMC37WH	P	WH					P					THCA	5522		
651263	MMC38	N	CH	0	640657	MMC38	N	CH	N	N	N	N	N	N	N	N	N				
652215	MMC38BRMC	N	BRMC	0	646353	MMC38BRMC	N	BRMC	N	N	N	N	N	N	N	N	N				
651310	MMC38R	N	CAMC	0	640705	MMC38R	N	CAMC	N	N	N	N	N	N	N	N	N				
651437	MMC38RGH	N	RGH	0	641610	MMC38RGH	N	RGH	N	N	N	N	N	N	N	N	N				
652244	MMC38RMH	P	RMH	50	646383	MMC38RMH	P	BRMC					P					THCA	5245		
652144	MMC38TMH	N	TMH	0	645693	MMC38TMH	N	TMH	N	N	N	N	N	N	N	N	N				
652031	MMC38WH	N	WH	0	643899	MMC38WH	N	WH	N	N	N	N	N	N	N	N	N				
651272	MMC39	N	CH	0	640666	MMC39	N	CH	N	N	N	N	N	N	N	N	N				
652216	MMC39BRMC	N	BRMC	0	646354	MMC39BRMC	N	BRMC	N	N	N	N	N	N	N	N	N				
651280	MMC39R	N	CAMC	0	640691	MMC39R	N	CAMC	N	N	N	N	N	N	N	N	N				
651413	MMC39RGH	N	RGH	0	641578	MMC39RGH	N	RGH	N	N	N	N	N	N	N	N	N				
652246	MMC39RMH	P	RMH	11	646384	MMC39RMH	N	RMH	N	N	N	N	N	N	N	N	N				
652145	MMC39TMH	N	TMH	0	645694	MMC39TMH	N	TMH	N	N	N	N	N	N	N	N	N				
652032	MMC39WH	P	WH	102	643900	MMC39WH	N	WH	N	N	N	N	N	N	N	N	N				
651459	MMC3BRMC	N	BRMC	0	641632	MMC3BRMC	N	BRMC	N	N	N	N	N	N	N	N	N				
651343	MMC3R	N	TMH	0	640738	MMC3R	P	TMH					P					THCA	4308		
651359	MMC3RR	N	RGH	0	640754	MMC3RR	P	RGH					P					THCA	4442		
651143	MMC4	N	RMH	0	639094	MMC4	N	WH	N	N	N	N	N	N	N	N	N				
651305	MMC40	N	CAMC	0	640700	MMC40	P	CAMC					P					THCA	2101		
652221	MMC40BRMC	N	BRMC	0	646359	MMC40BRMC	N	BRMC	N	N	N	N	N	N	N	N	N				
651978	MMC40CH	N	CH	0	643325	MMC40CH	N	CH	N	N	N	N	N	N	N	N	N				
651414	MMC40RGH	N	RGH	0	641583	MMC40RGH	N	RGH	N	N	N	N	N	N	N	N	N				
652247	MMC40RMH	N	RMH	0	646385	MMC40RMH	N	RMH	N	N	N	N	N	N	N	N	N				
652146	MMC40TMH	N	TMH	0	645695	MMC40TMH	N	TMH	N	N	N	N	N	N	N	N	N				
652038	MMC40WH	P	WH	33	643903	MMC40WH	N	WH	N	N	N	N	N	N	N	N	N				
651282	MMC41	N	CAMC	0	640693	MMC41	N	CAMC	N	N	N	N	N	N	N	N	N				
652222	MMC41BRMC	N	BRMC	0	646360	MMC41BRMC	N	BRMC	N	N	N	N	N	N	N	N	N				
651979	MMC41CH	N	CH	0	643326	MMC41CH	N	CH	N	N	N	N	N	N	N	N	N				
651428	MMC41RGH	N	RGH	0	641601	MMC41RGH	N	RGH	N	N	N	N	N	N	N	N	N				
652248	MMC41RMH	N	RMH	0	646386	MMC41RMH	P	RMH					P					Hydrocodo	6.9		
652147	MMC41TMH	N	TMH	0	645696	MMC41TMH	N	TMH	N	N	N	N	N	N	N	N	N				
652039	MMC41WH	N	WH	0	643904	MMC41WH	N	WH	N	N	N	N	N	N	N	N	N				
651309	MMC42	P	CAMC	23	640704	MMC42	N	CAMC	N	N	N	N	N	N	N	N	N				
652226	MMC42BRMC	N	BRMC	0	646364	MMC42BRMC	N	BRMC	N	N	N	N	N	N	N	N	N				
651980	MMC42CH	N	CH	0	643327	MMC42CH	N	CH	N	N	N	N	N	N	N	N	N				
651409	MMC42RGH	N	RGH	0	641570	MMC42RGH	N	RGH	N	N	N	N	N	N	N	N	N				
652249	MMC42RMH	N	RMH	0	646387	MMC42RMH	N	RMH	N	N	N	N	N	N	N	N	N				
652148	MMC42TMH	N	TMH	0	645697	MMC42TMH	N	TMH	N	N	N	N	N	N	N	N	N				

HSN	PETH	SSN	FINAL_RESULT	LOCATION	PETH	HSN	CS7	SSN	FINAL	Site code	AMP	COC	OPI	THC	BZP	MTD	BDP		
652044	MMC42WH	N	WH	0 643909	MMC42WH	N	WH	N	N	N	N	N	N	N	N	N	N		
651326	MMC43	N	CAMC	0 640721	MMC43	N	CAMC	N	N	N	N	N	N	N	N	N	N		
652228	MMC43BRMC	N	BRMC	0 646366	MMC43BRMC	N	BRMC	N	N	N	N	N	N	N	N	N	N		
651981	MMC43CH	N	CH	0 643328	MMC43CH	P	CH							P				THCA	1451
651425	MMC43RGH	N	RGH	0 641598	MMC43RGH	N	RGH	N	N	N	N	N	N	N	N	N	N		
652250	MMC43RMH	N	RMH	0 646388	MMC43RMH	N	RMH	N	N	N	N	N	N	N	N	N	N		
652200	MMC43TMH	N	TMH	0 646336	MMC43TMH	N	TMH	N	N	N	N	N	N	N	N	N	N		
652045	MMC43WH	P	WH	48 643910	MMC43WH	N	WH	N	N	N	N	N	N	N	N	N	N		
651311	MMC44	N	CAMC	0 640706	MMC44	N	CAMC	N	N	N	N	N	N	N	N	N	N		
652232	MMC44BRMC	N	BRMC	0 646370	MMC44BRMC	N	BRMC	N	N	N	N	N	N	N	N	N	N		
651982	MMC44CH	N	CH	0 643329	MMC44CH	N	CH	N	N	N	N	N	N	N	N	N	N		
651444	MMC44RGH	N	RGH	0 641617	MMC44RGH	N	RGH	N	N	N	N	N	N	N	N	N	N		
652251	MMC44RMH	N	RMH	0 646389	MMC44RMH	P	RMH							P				Morphine	17.3
652201	MMC44TMH	N	TMH	0 646337	MMC44TMH	N	TMH	N	N	N	N	N	N	N	N	N	N		
652195	MMC44WH	N	WH	0 646331	MMC44WH	N	WH	N	N	N	N	N	N	N	N	N	N		
651324	MMC45	N	CAMC	0 640719	MMC45	N	CAMC	N	N	N	N	N	N	N	N	N	N		
652234	MMC45BRMC	P	BRMC	14 646372	MMC45BRMC	N	BRMC	N	N	N	N	N	N	N	N	N	N		
651983	MMC45CH	N	CH	0 643330	MMC45CH	N	CH	N	N	N	N	N	N	N	N	N	N		
651422	MMC45RGH	N	RGH	0 641595	MMC45RGH	N	RGH	N	N	N	N	N	N	N	N	N	N		
652252	MMC45RMH	N	RMH	0 646390	MMC45RMH	N	RMH	N	N	N	N	N	N	N	N	N	N		
652203	MMC45TMH	N	TMH	0 646339	MMC45TMH	N	TMH	N	N	N	N	N	N	N	N	N	N		
652196	MMC45WH	P	WH	50 646332	MMC45WH	N	WH	N	N	N	N	N	N	N	N	N	N		
651307	MMC46	N	CAMC	0 640702	MMC46	N	CAMC	N	N	N	N	N	N	N	N	N	N		
652236	MMC46BRMC	N	BRMC	0 646374	MMC46BRMC	N	BRMC	N	N	N	N	N	N	N	N	N	N		
651984	MMC46CH	N	CH	0 643331	MMC46CH	N	CH	N	N	N	N	N	N	N	N	N	N		
651434	MMC46RGH	N	RGH	0 641607	MMC46RGH	N	RGH	N	N	N	N	N	N	N	N	N	N		
652253	MMC46RMH	N	RMH	0 646391	MMC46RMH	N	RMH	N	N	N	N	N	N	N	N	N	N		
652204	MMC46TMH	N	TMH	0 646340	MMC46TMH	N	TMH	N	N	N	N	N	N	N	N	N	N		
652213	MMC46WH	N	WH	0 646351	MMC46WH	N	WH	N	N	N	N	N	N	N	N	N	N		
651306	MMC47	N	CAMC	0 640701	MMC47	N	CAMC	N	N	N	N	N	N	N	N	N	N		
652239	MMC47BRMC	N	BRMC	0 646377	MMC47BRMC	N	BRMC	N	N	N	N	N	N	N	N	N	N		
651985	MMC47CH	N	CH	0 643332	MMC47CH	N	CH	N	N	N	N	N	N	N	N	N	N		
651441	MMC47RGH	N	RGH	0 641614	MMC47RGH	N	RGH	N	N	N	N	N	N	N	N	N	N		
652254	MMC47RMH	N	RMH	0 646392	MMC47RMH	N	RMH	N	N	N	N	N	N	N	N	N	N		
652207	MMC47TMH	N	TMH	0 646343	MMC47TMH	N	TMH	N	N	N	N	N	N	N	N	N	N		
652194	MMC47WH	N	WH	0 646330	MMC47WH	P	WH							P				THCA	1613
651283	MMC48	N	CAMC	0 640694	MMC48	N	CAMC	N	N	N	N	N	N	N	N	N	N		
652242	MMC48BRMC	N	RMC	0 646380	MMC48BRMC	N	BRMC	N	N	N	N	N	N	N	N	N	N		
651986	MMC48CH	N	CH	0 643333	MMC48CH	N	CH	N	N	N	N	N	N	N	N	N	N		
651327	MMC48R	P	CAMC	138 640722	MMC48R	P	CAMC							P				THCA	2350
652149	MMC48RGH	N	RGH	0 645698	MMC48RGH	N	RGH	N	N	N	N	N	N	N	N	N	N		
652255	MMC48RMH	N	RMH	0 646393	MMC48RMH	N	RMH	N	N	N	N	N	N	N	N	N	N		
652209	MMC48TMH	N	TMH	0 646345	MMC48TMH	N	TMH	N	N	N	N	N	N	N	N	N	N		
652233	MMC48WH	N	WH	0 646371	MMC48WH	N	WH	N	N	N	N	N	N	N	N	N	N		
651321	MMC49	N	CAMC	0 640716	MMC49	N	CAMC	N	N	N	N	N	N	N	N	N	N		
651987	MMC49CH	N	CH	0 643334	MMC49CH	N	CH	N	N	N	N	N	N	N	N	N	N		
652150	MMC49RGH	N	RGH	0 645699	MMC49RGH	N	RGH	N	N	N	N	N	N	N	N	N	N		
652256	MMC49RMH	N	RMH	0 646394	MMC49RMH	N	RMH	N	N	N	N	N	N	N	N	N	N		
652211	MMC49TMH	N	TMH	0 646347	MMC49TMH	N	TMH	N	N	N	N	N	N	N	N	N	N		
652238	MMC49WH	P	WH	32 646376	MMC49WH	N	WH	N	N	N	N	N	N	N	N	N	N		
651462	MMC4BRMC	N	BRMC	0 641635	MMC4BRMC	N	BRMC	N	N	N	N	N	N	N	N	N	N		
651341	MMC4R	N	TMH	0 640736	MMC4R	N	TM	N	N	N	N	N	N	N	N	N	N		
651365	MMC4RR	N	RGH	0 640760	MMC4RR	P	RGH							P				THCA	572
651362	MMC5	N	RGH	0 640757	MMC5	N	RGH	N	N	N	N	N	N	N	N	N	N		
651319	MMC50	N	CAMC	0 640714	MMC50	N	CAMC	N	N	N	N	N	N	N	N	N	N		
651988	MMC50CH	N	CH	0 643335	MMC50CH	N	CH	N	N	N	N	N	N	N	N	N	N		
652151	MMC50RGH	N	RGH	0 645700	MMC50RGH	N	RGH	N	N	N	N	N	N	N	N	N	N		
652257	MMC50RMH	N	RMH	0 646395	MMC50RMH	P	RMH							P				THCA	3898







HSN PETH	SSN	FINAL_RESULT	LOCATION	PETH HSN CS7	SSN	FINAL Site code	AMP	COC	OPI	THC	BZP	MTD	BUP			
651232	MMC99	N	CHH	0 640300	MMC99	N CHH	N	N	N	N	N	N	N			
651916	MMC99CAMC	P	CAMC	14 642867	MMC99CAMC	N CAMC	N	N	N	N	N	N	N			
651469	MMC9BRMC	N	BRMC	0	MMC9BRMC	N BRMC	N	N	N	N	N	N	N			
651333	MMC9R	N	TMH	0 640728	MMC9R	P TMH						P		EDDP	32	Methadone 65
651363	MMC9RR	N	RGH	0 640758	MMC9RR	N RGH	N	N	N	N	N	N	N			











































PETH_RESULT	PETH_FINAL	Site code	AMP	COC	OPI	THC	BZP	MTD	BUP	PETH
N	0 N	CAMC	N	N	N	N	N	N	N	N
N	0 N	CHH	N	N	N	N	N	N	N	N
N	0 N	CAMC	N	N	N	N	N	N	N	N
N	0 N	CHH	N	N	N	N	N	N	N	N
N	0 N	CAMC	N	N	N	N	N	N	N	N
N	0 N	CHH	N	N	N	N	N	N	N	N
N	0 N	CAMC	N	N	N	N	N	N	N	N
N	0 N	CHH	N	N	N	N	N	N	N	N
N	0 N	CAMC	N	N	N	N	N	N	N	N
N	0 N	CHH	N	N	N	N	N	N	N	N
N	0 N	CAMC	N	N	N	N	N	N	N	N
N	0 N	CHH	N	N	N	N	N	N	N	N
P	14 N	CAMC	N	N	N	N	N	N	N	P
N	0 N	BRMC	N	N	N	N	N	N	N	N
N	0 N	RGH	N	N	N	N	N	N	N	N
N	0 P	CHH	N	N	P	P	P	N	N	N
N	0 P	CHH	N	N	N	P	P	N	N	N
N	0 P	CHH	N	N	N	P	P	N	N	N
N	0 P	CAMC	N	N	P	N	P	N	N	N
N	0 P	CHH	N	N	P	N	P	N	N	N
N	0 P	CAMC	N	N	P	N	P	N	N	N
N	0 P	RMH	N	N	N	N	P	N	N	N
N	0 P	WH	N	N	N	N	P	N	N	N
N	0 P	CHH	N	N	N	N	P	N	N	N
N	0 P	CHH	N	N	N	N	P	N	N	N
N	0 P	BRMC	N	N	N	N	P	N	N	N
N	0 P	CHH	N	N	N	N	P	N	N	N
N	0 P	BRGH	N	N	N	N	P	N	N	N
N	0 P	BRMC	N	N	N	N	P	N	N	N
N	0 P	CAMC	N	N	N	N	P	N	N	N
N	0 P	CHH	N	N	P	P	N	N	N	N
N	0 P	CHH	N	N	P	P	N	N	N	N
N	0 P	CHH	N	N	P	P	N	N	N	N
N	0 P	CAMC	N	N	N	P	N	N	N	N
N	0 P	CHH	N	N	N	P	N	N	N	N

PETH_RESULT	PETH_FINAL	Site code	AMP	COC	OPI	THC	BZP	MTD	BUP	PETH
N	0 P	RGH	N	N	N	P	N	N	N	N
N	0 P	CHH	N	N	N	P	N	N	N	N
N	0 P	CAMC	N	N	N	P	N	N	N	N
N	0 P	CHH	N	N	N	P	N	N	N	N
N	0 P	CHH	N	N	N	P	N	N	N	N
N	0 P	WH	N	N	N	P	N	N	N	N
N	0 P	CHH	N	N	N	P	N	N	N	N
N	0 P	CHH	N	N	N	P	N	N	N	N
N	0 P	TMH	N	N	N	P	N	N	N	N
N	0 P	RGH	N	N	N	P	N	N	N	N
N	0 P	RGH	N	N	N	P	N	N	N	N
N	0 P	TMH	N	N	N	P	N	N	N	N
N	0 P	RGH	N	N	N	P	N	N	N	N
N	0 P	CHH	N	N	N	P	N	N	N	N
N	0 P	CHH	N	N	N	P	N	N	N	N
N	0 P	RGH	N	N	N	P	N	N	N	N
N	0 P	TMH	N	N	N	P	N	N	N	N
N	0 P	RGH	N	N	N	P	N	N	N	N
N	0 P	WH	N	N	N	P	N	N	N	N
N	0 P	BRMC	N	N	N	P	N	N	N	N
N	0 P	TMH	N	N	N	P	N	N	N	N
N	0 P	WH	N	N	N	P	N	N	N	N
P	50 P	BRMC	N	N	N	P	N	N	N	P
N	0 P	TMH	N	N	N	P	N	N	N	N
N	0 P	RGH	N	N	N	P	N	N	N	N
N	0 P	CAMC	N	N	N	P	N	N	N	N
N	0 P	CH	N	N	N	P	N	N	N	N
N	0 P	WH	N	N	N	P	N	N	N	N
P	138 P	CAMC	N	N	N	P	N	N	N	P
N	0 P	RGH	N	N	N	P	N	N	N	N
N	0 P	RMH	N	N	N	P	N	N	N	N
N	0 P	CAMC	N	N	N	P	N	N	N	N
P	18 P	CH	N	N	N	P	N	N	N	P
N	0 P	CH	N	N	N	P	N	N	N	N
N	0 P	CH	N	N	N	P	N	N	N	N

PETH_RESULT	PETH_FINAL	Site code	AMP	COC	OPI	THC	BZP	MTD	BUP	PETH
N	0 P	CH	N	N	N	P	N	N	N	N
N	0 P	CAMC	N	N	N	P	N	N	N	N
N	0 P	CH	N	N	N	P	N	N	N	N
P	31 P	RGH	N	N	N	P	N	N	N	P
N	0 P	RGH	N	N	N	P	N	N	N	N
N	0 P	CAMC	N	N	N	P	N	N	N	N
N	0 P	CAMC	N	N	N	P	N	N	N	N
N	0 P	CAMC	N	N	N	P	N	N	N	N
N	0 P	RGH	N	N	N	P	N	N	N	N
N	0 P	CHH	N	N	N	P	N	N	N	N
N	0 P	RGH	N	N	N	P	N	N	N	N
N	0 P	CHH	N	N	N	P	N	N	N	N
N	0 P	CAMC	N	N	N	P	N	N	N	N
N	0 P	CHH	N	N	P	N	N	N	N	N
N	0 P	CHH	N	N	P	N	N	N	N	N
N	0 P	CHH	N	N	P	N	N	N	N	N
N	0 P	CHH	N	N	P	N	N	N	N	N
N	0 P	CHH	N	N	P	N	N	N	N	N
N	0 P	CHH	N	N	P	N	N	N	N	N
N	0 P	CHH	N	N	P	N	N	N	N	N
N	0 P	CHH	N	N	P	N	N	N	N	N
N	0 P	CHH	N	N	P	N	N	N	N	N
N	0 P	CAMC	N	N	P	N	N	N	N	N
N	0 P	CHH	N	N	P	N	N	N	N	N
P	85 P	CAMC	N	N	P	N	N	N	N	P
P	54 P	CAMC	N	N	P	N	N	N	N	P
N	0 P	CHH	N	N	P	N	N	N	N	N
N	0 P	WH	N	N	P	N	N	N	N	N
N	0 P	CHH	N	N	P	N	N	N	N	N
N	0 P	CHH	N	N	P	N	N	N	N	N
N	0 P	CHH	N	N	P	N	N	N	N	N

PETH_RESULT	PETH_FINAL	Site code	AMP	COC	OPI	THC	BZP	MTD	BUP	PETH
N	0 P	CHH	N	N	P	N	N	N	N	N
N	0 P	CHH	N	N	P	N	N	N	N	N
N	0 P	RGH	N	N	P	N	N	N	N	N
N	0 P	RMH	N	N	P	N	N	N	N	N
N	0 P	RMH	N	N	P	N	N	N	N	N
N	0 P	RMH	N	N	P	N	N	N	N	N
N	0 P	WH	N	N	P	N	N	N	N	N
N	0 P	CAMC	N	N	P	N	N	N	N	N
N	0 P	RGH	N	N	P	N	N	N	N	N
N	0 P	CAMC	N	N	N	N	N	N	N	N
P	30 P	CHH	N	N	P	N	P	P	N	P
N	0 P	CHH	N	N	N	N	P	P	N	N
N	0 P	RGH	N	N	P	P	N	P	N	N
N	0 P	RGH	N	N	N	P	N	P	N	N
N	0 P	CHH	N	N	P	N	N	P	N	N
N	0 P	CHH	N	N	N	N	N	P	N	N
N	0 P	CHH	N	N	N	N	N	P	N	N
N	0 P	CAMC	N	N	N	N	N	P	N	N
N	0 P	BRMC	N	N	N	N	N	P	N	N
N	0 P	WH	N	N	N	N	N	P	N	N
N	0 P	BRMC	N	N	N	N	N	P	N	N
P	6 P	CH	N	N	N	N	N	P	N	P
N	0 P	CAMC	N	N	N	N	N	P	N	N
N	0 P	TMH	N	N	N	N	N	P	N	N