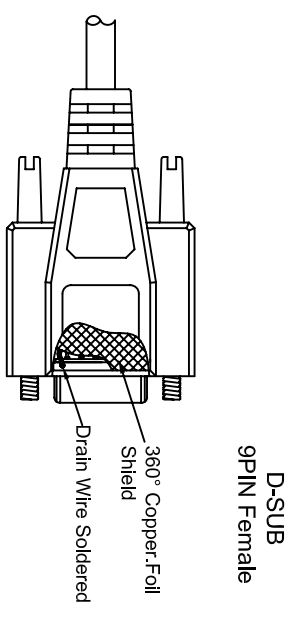
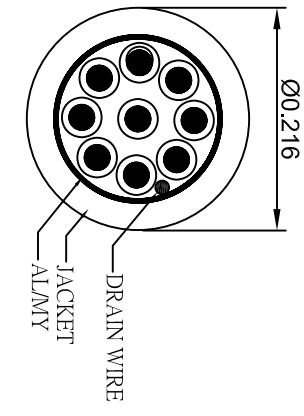
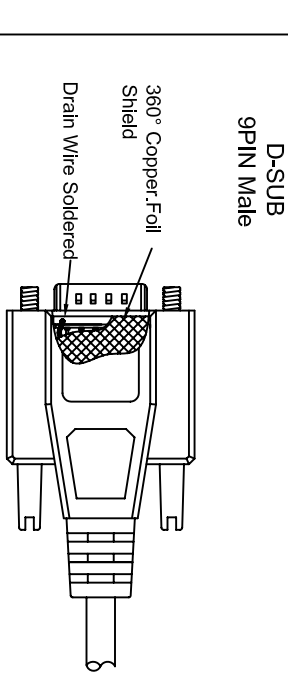
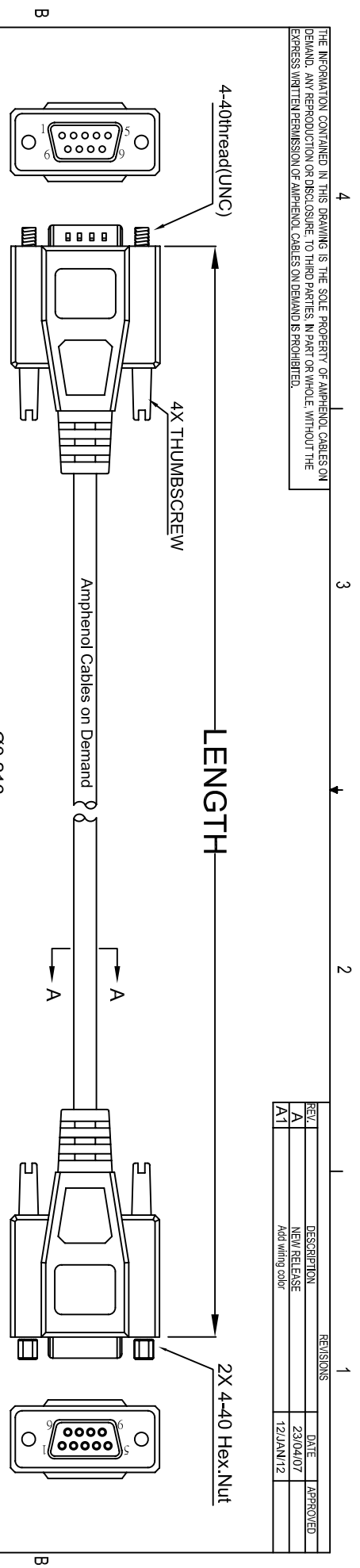


THE INFORMATION CONTAINED IN THIS DRAWING IS THE SOLE PROPERTY OF AMPHENOL CABLES ON DEMAND. ANY REPRODUCTION OR DISCLOSURE TO THIRD PARTIES, IN PART OR WHOLE, WITHOUT THE EXPRESS WRITTEN PERMISSION OF AMPHENOL CABLES ON DEMAND IS PROHIBITED.

REV.	DESCRIPTION	DATE	APPROVED
A	NEW RELEASE	23/04/07	
A1	Add wiring color	12/JAN/12	



PIN OUT: 1 TO 1

Male	Female	Color
PIN1	PIN1	Black
PIN2	PIN2	Brown
PIN3	PIN3	Red
PIN4	PIN4	Orange
PIN5	PIN5	Yellow
PIN6	PIN6	Green
PIN7	PIN7	Blue
PIN8	PIN8	Purple
PIN9	PIN9	Gray
SHIELD	SHIELD	Drain Wire

LENGTH & P/N Table

LENGTH	P/N	Cable Color
2.5FT ±1 inch	CS-DSDMDB09MF-002.5	GRAY
3FT ±2 inch	CS-DSDMDB09MF-003	GRAY
5FT ±2 inch	CS-DSDMDB09MF-005	GRAY
10FT ±3 inch	CS-DSDMDB09MF-010	GRAY
25FT ±4 inch	CS-DSDMDB09MF-025	GRAY



UNLESS OTHERWISE SPECIFIED DIMENSIONS ARE IN INCHES TOLERANCES ARE:		E&R NO.		Amphenol Cables on Demand 20 VALLEY ST. ENDICOTT, NY 13780	
DECIMALS	ANGLES	APPROVALS	DATE	Deluxe 9PIN D-Sub MF	
X	± X°	LF	12/JAN/2012		
XX	±.XX	BA	12/JAN/2012		
XXX	±.XXX	RESP ENG		CS-DSDMDB09MF-XXX	
THIRD ANGLE PROJECTION		DRWG. NO.	SIZE	REV.	
		MFG ENG	A	A1	

NOTES: UNLESS OTHERWISE SPECIFIED

4 3 2 1

Mouser Electronics

Authorized Distributor

Click to View Pricing, Inventory, Delivery & Lifecycle Information:

[Amphenol:](#)

[CS-DSDMDB09MF-025](#) [CS-DSDMDB09MF-002.5](#) [CS-DSDMDB09MF-003](#) [CS-DSDMDB09MF-005](#) [CS-DSDMDB09MF-010](#)