

How Do You Know It's Val-Saint-Lambert?

A Briefing by Gerry LaCroix
to ACGA Convention Attendees
Portland, Oregon
16 July 2007

Briefing Outline

- Val Catalogs, Signatures and Paper Labels
- Val Items Most Likely to be Mistaken for American Made
- Four Major Discriminators
- Other Clues
- Summary

Val's Catalogs and Price Guides



Patterns and Shapes:

1904-Table Sets

1905-Stemware

1906-Table Sets

1908-Vases, Bowls, etc.

1926-Fantasy Crystal

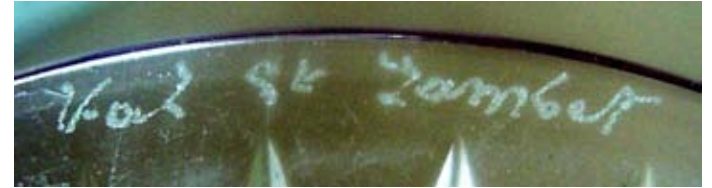
•Accompanying Price Guides Sizes

English vs. Metric

Then-Year Prices

Wholesale vs. Retail

Signatures



Paper Labels



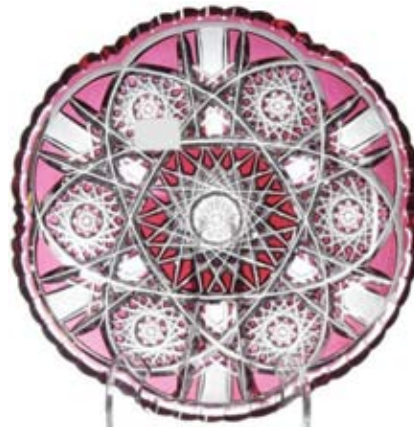
13 Val Items Most Likely to be Mistaken for American Made

- Bergen's "Glenwood" or Hoare's "Acme"
- Bergen's "Crescent" a.k.a. "Dauntless"
- Clark's "Iris" or Alford's "Thistle"
- Dorflinger's "Duchess"
- Higgins & Seiter's "Everett"
- Libbey's "83"
- Libbey's "Harvard"
- Sandwich's "Panel & Stars"
- Sandwich's "Octagon Diamond"
- Cape Cod's "Strawberry Diamond and Fan"
- Averbeck's "Florida" or Empire's "Albert"
- Fry's "Elsie"
- Unknown with Dorflinger Label

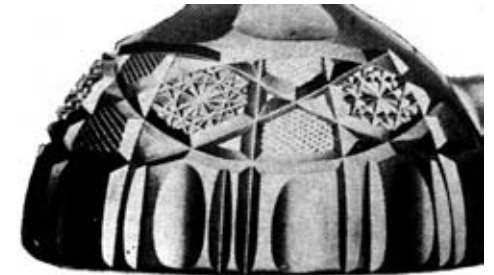
Bergen's "Glenwood" or Hoare's "Acme"



**"Saarbrücken"
or
"Belfort"**



**Bergen's
"Glenwood"**



**Hoare's
"Acme"**

Bergen's "Crescent" a.k.a "Dauntless"

Patented by James D.
Bergen

Patent #27457

3



Design:
1897/13386



"Crescent" Ad

Clark's "Iris" or Alford's "Thistle"

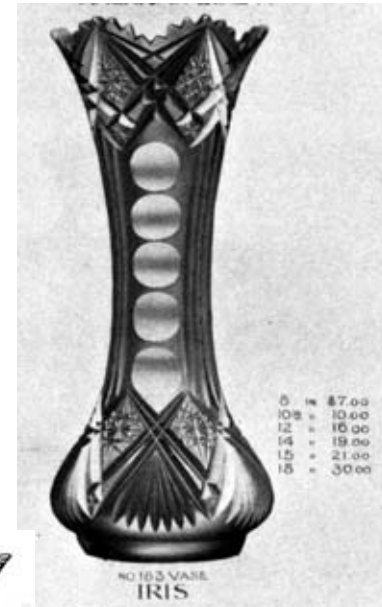


Design: 3613/17

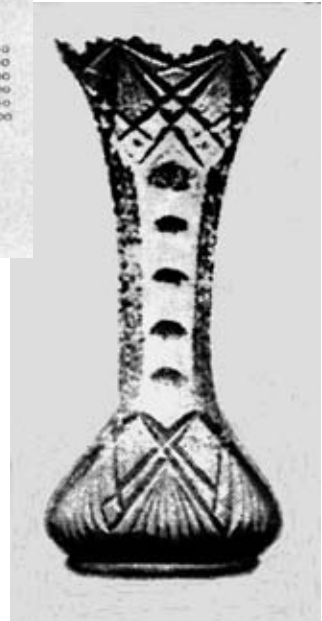
Description:

**Very Rare
Unsigned
Bulbous Corset
Shape
Scalloped Rim
6 Cut Oval Design
32 pt. Rayed Star
Base**

**Val Line
Drawing**



**Clark's
"Iris"**

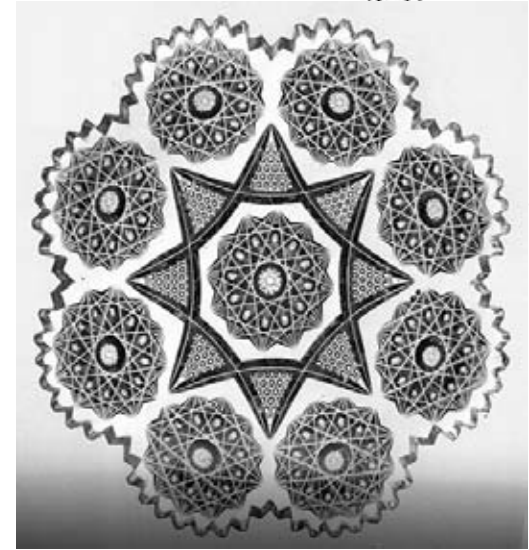
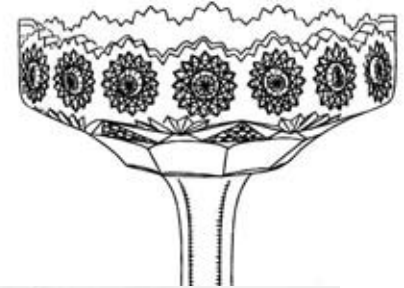


**Alford's
"Thistle"**

Dorflinger's "Duchess"



**Val Design:
3157/17**



**Dorflinger's
"Duchess"**

Higgins & Seiter's "Everett"



**Engraved
"24 Sbire 1896"**

**Unknown
Val Design**

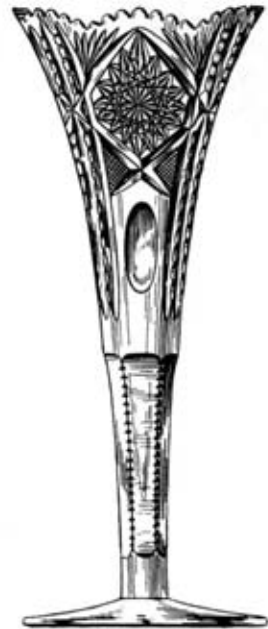


**Higgins & Seiter's
"Everett"**

Libbey's "83"



**Val Design:
HF 193**



**Libbey's "83"
Shape 292**



Libbey's "Harvard"

Design:
2900/17



**Some Unsigned;
Some Signed Script
"Val St. Lambert"**



**Libbey's
"Harvard"**



Design:
2917/17

Sandwich's "Panel & Stars"



Dimensions:

8.5" high
3.5" dia.

Date: ca. 1900

Description:

Rare
Unsigned
Matching Teardrop
Stopper
24 pt. Rayed Star Base

Unknown
Val Design



Sandwich's
"Panel & Stars"

Sandwich's "Octagon Diamond"



**Val's "Hob
Diamond"**

**Sandwich's
"Octagon
Diamond"**



Cape Cod's "Strawberry Diamond & Fan"



**Cape Cod's
"Strawberry
Diamond & Fan"**

**Val's
"Georgette"**



Averbeck's "Florida" or Empire's "Albert"



**Unknown
Val Design**

Dimensions:

**5.25" high
2.5" dia.**

Date: ca. 1900

Description:

Extremely Rare

**Facet Cut
Double Knobbed
Hollow Stem**

**16 pt. Hobstar and
Scalloped/Notched
Base**



**Averbeck's
"Florida"**

**Empire's
"Albert"**



Fry's "Elsie"



Fry's "Elsie"

**Unknown
Val Design**

Unknown Vase with Dorflinger Label



**Unknown
Val Design**

**Vase from
Rarities with
Dorflinger Label**

Four Major Discriminators

- Pattern
- Shape
- Color
- Finish

Patterns (1 of 2)



Prince
de
Galles

Patterns (2 of 2)



Art Deco
Style

Fancy Foot Patterns



Carafes/Decanters/Spiritbottles



Pyramid



Triangular Body
Wafer Stopper



Double Spout
Narrow Waist



Eiffel

Vases



Square



Cylindrical



Bulbous



Torch



Barrel

Amber, Chartreuse and the Reds

Amber



Chartreuse



Ruby



Cranberry

The Greens

Olive Green



Dark Green



Light Green

Emerald Green

Amethyst, Purple and the Blues



Amethyst



French Blue



Purple



Cobalt Blue

Color to Color



Cranberry
to Yellow



Amethyst
to Yellow



Cranberry
to Caramel

Color to Color

Orange
to Yellow



French Blue
to Yellow



Amethyst to
Olive Green

Amber
to Yellow



Triple Color



Matte or Satin Finish



Vases



Powder Boxes



Atomizers

Other Clues

- Available Sizes (English vs. Metric)
 - Inches vs. Centimeters
 - Pints vs. Centiliters

- Angle Cuts
 - Some ~90 cuts

- Purchase Origin
 - If bought in Belgium or France, unlikely to be U.S. made

- European vs. American Numbering Styles

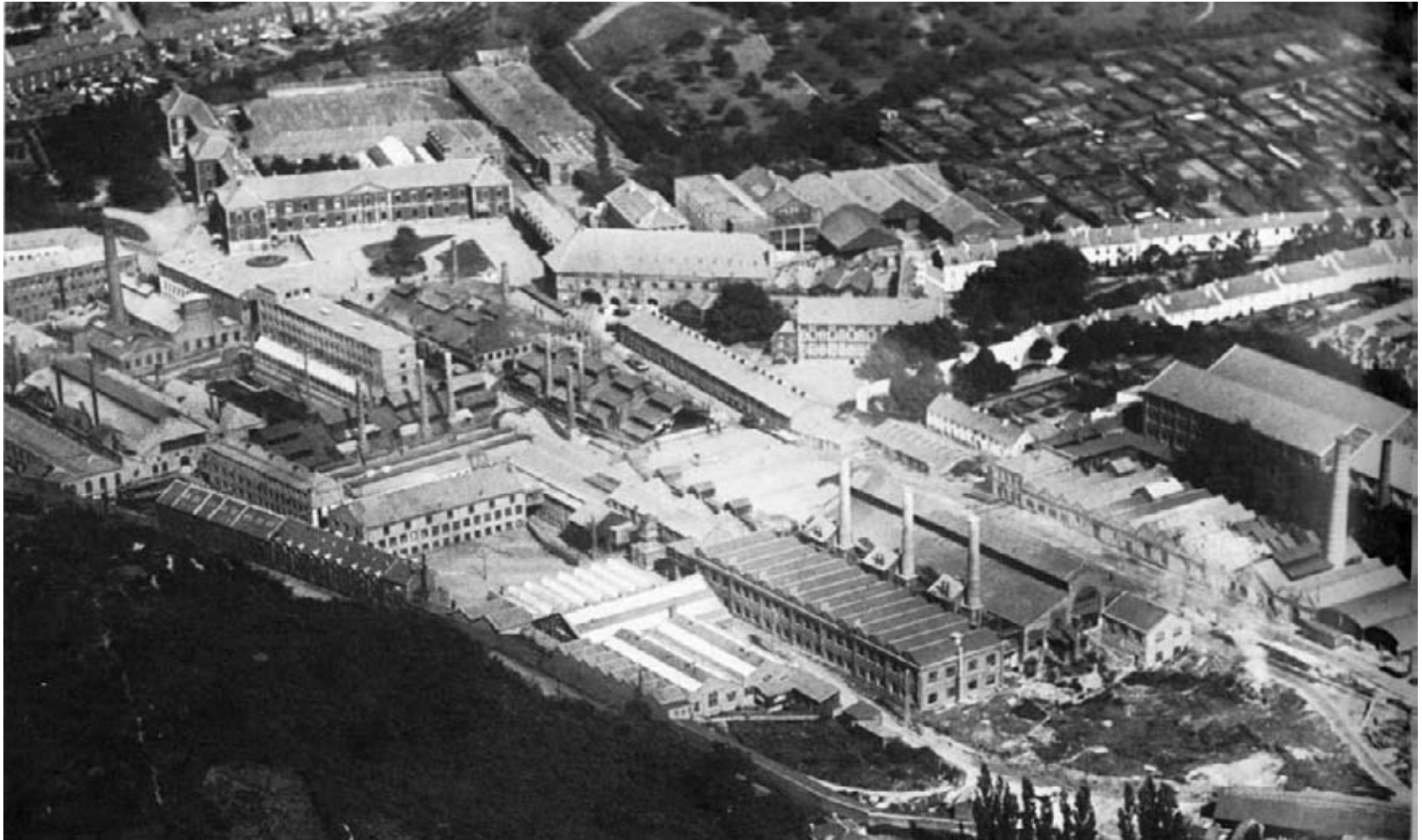
1 vs. 1

7 vs. 7

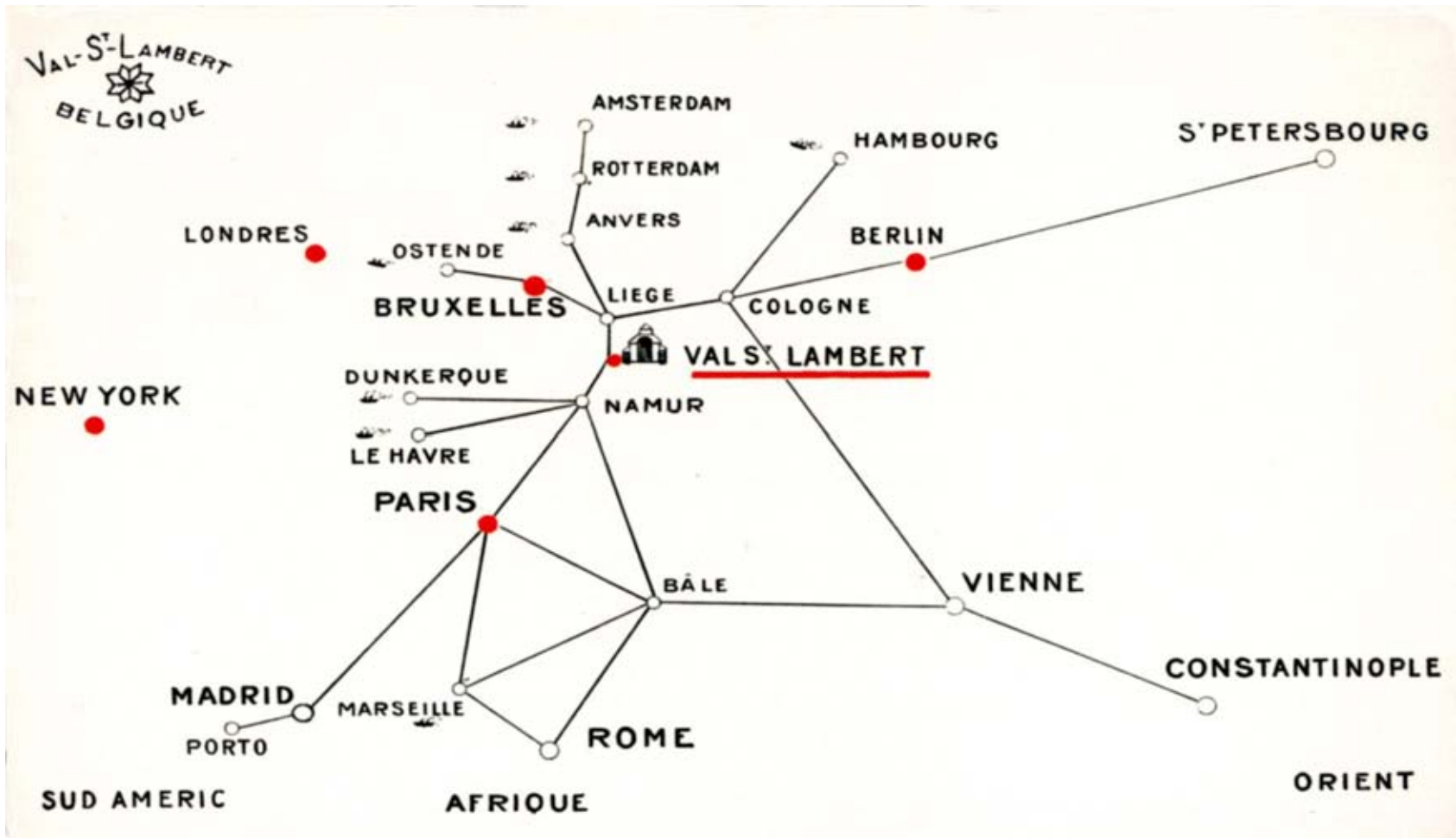
Summary

- The Val catalogs and associated price guides are invaluable in answering the question “How do you know it’s Val?”
 - The examples presented are those you are most likely to encounter
 - Pattern, shape, color and finish, singly or in combination, can be major discriminators
 - The Other Clues may be telling

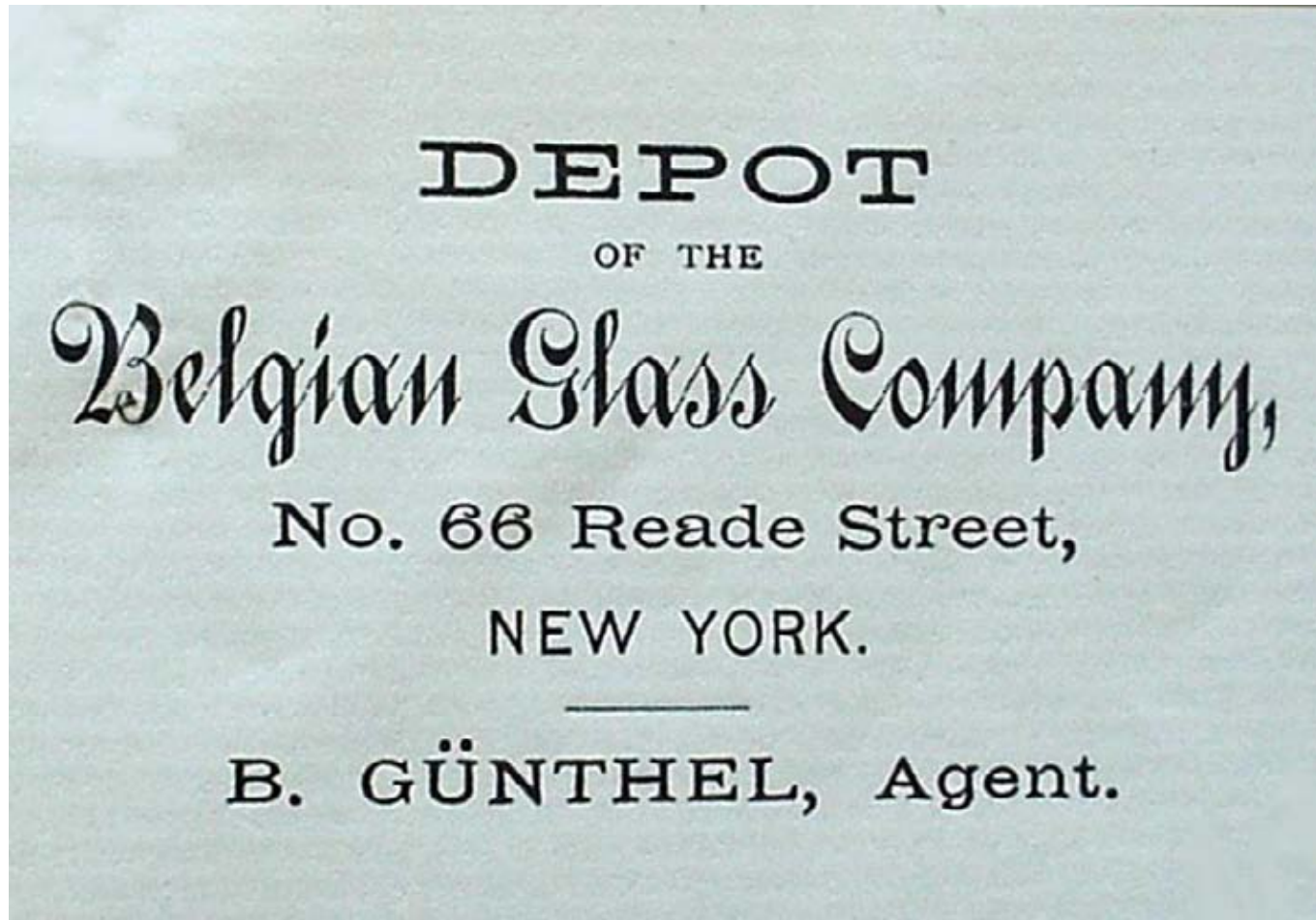
Val-Saint-Lambert Crystal Works in 1904



Val's Product Distribution Network ca. 1900



New York City Depot (Opened in 1876)



Gross Sales in the U.S.

**14% of Val's Production
exported to the U.S.
during the height of the
Brilliant Period**

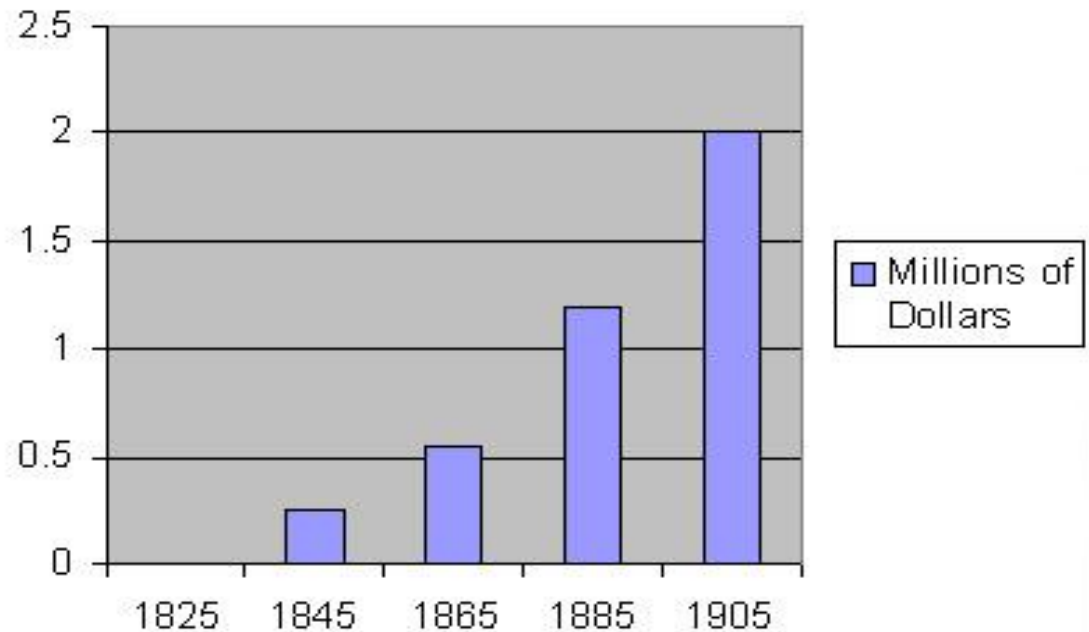
Val's sales 1888-1889:

New York--\$45,000

Chicago--\$43,400

Boston--\$26,000

Philadelphia--\$15,000



Highlights--1889 Val CEO Visit

- **Dorflinger's pieces are well-priced. I bought several big pieces to be shipped to Val. I'm impressed with the variety of Dorflinger's colored glass:**
 - Rose over yellow or amber or vice versa,
 - Rose over clear,
 - Blue
 - Blue or green over yellow
- **The American cutters are of the highest skill level and the products are of remarkable regularity.**
- **The articles against which we compete here in the U.S. are irreproachable.**
- **I recommend that Val adopt the rich American style of deep and elaborate cuts.**