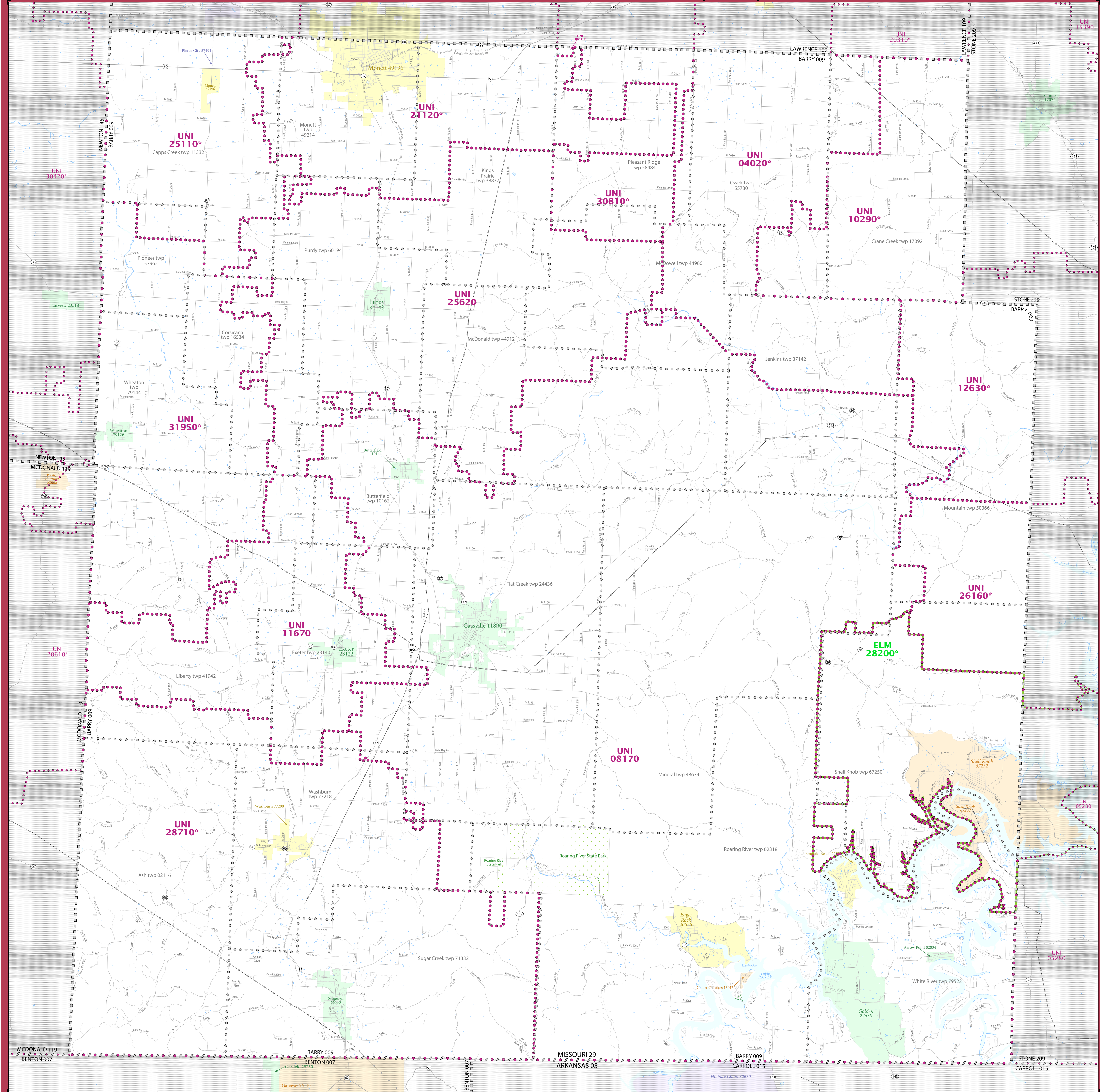


2020 CENSUS - SCHOOL DISTRICT REFERENCE MAP: Barry County, MO



LEGEND

SYMBOL DESCRIPTION	SYMBOL	LABEL STYLE
International	☆☆☆☆☆	CANADA
Federal American Indian Reservation	[Dotted Pattern]	L'ANSE RES 1880
Off-Reservation Trust Land	[Dotted Pattern]	T1880
State American Indian Reservation	[Dotted Pattern]	Tama Res 9400
Alaska Native Regional Corporation	+++++	NANA ANRC 52120
State (or statistically equivalent entity)		NEW YORK 36
County (or statistically equivalent entity)	□□□□	ERIE 029
Minor Civil Division (MCD) ^{1,2}	○○○○○	Bristol town 07485
Consolidated City	○	MILFORD 47500
Incorporated Place ³	[Color Box]	Davis 18100
Census Designated Place (CDP) ³	[Color Box]	Incline Village 35100
Unified School District ⁴	[Dotted Pattern]	UNI 0370 SEC 99965 ELM 02220
Secondary School District ⁴	[Dotted Pattern]	
Elementary School District ⁴	[Dotted Pattern]	

DESCRIPTION	SYMBOL	DESCRIPTION	SYMBOL
Interstate	[Blue Line]	Water Body	[Blue Area]
U.S. Highway	[Black Line]	Military	[Blue Line]
State Highway or State Road	[Black Line]	National or State Park, Forest, or Recreation Area	[Green Area]
Other Road	[Black Line]	Recreation Area	[Green Area]
Road	[Black Line]	Inset Area	[Green Area]
AWD Trail, Stairway, Alley, Walkway, or Ferry	[Black Line]	Outside Subject Area	[Grey Area]
Railroad	[Black Line]		
Pipeline or Power Line	[Black Line]		
Ridge or Fence	[Black Line]		
Notable Boundary or Feature Not Elsewhere Classified	[Black Line]		

Where international, state, county, and/or MCD boundaries coincide, the map shows the boundary symbol for only the highest-ranking of these boundaries.

Geographic area names are followed by either their FIPS or census code.

- MCD boundaries are shown in the following states in which some or all MCDs function as general-purpose governmental units: Connecticut, Illinois, Indiana, Kansas, Maine, Massachusetts, Michigan, Minnesota, Missouri, Nebraska, New Hampshire, New Jersey, New York, North Dakota, Ohio, Pennsylvania, Rhode Island, South Dakota, Vermont, and Wisconsin. (Note that Illinois and Nebraska have some counties covered by nongovernmental precincts and Missouri has most counties covered by nongovernmental townships.)
- A "*" following an MCD name denotes a false MCD. A "*" following a place name indicates that a false MCD exists with the same name and FIPS code as the place; the false MCD label is not shown.
- Place label color corresponds to the place fill color.
- A "*" following a label indicates that the school district is in more than one county.

Due to space limitations, some areas and features such as water bodies, parks, and roads may not be labeled.

SUBJECT AREA SCHOOL DISTRICTS ON MAP SHEET

TYPE	CODE	NAME
UNI	04020	Aurora R-III School District
UNI	08170	Cassville R-III School District
UNI	10290	Crane R-III School District
UNI	11670	Exeter R-III School District
UNI	12630	Galena R-III School District
UNI	21120	Monett R-III School District
UNI	25110	Pierce City R-VI School District
UNI	25600	Purdy R-III School District
UNI	26160	Reeds Spring R-VI School District
UNI	28710	Southwest R-VI School District
UNI	30810	Verona R-III School District
UNI	31950	Wheaton R-III School District
ELM	28200	Shell Knob 78 School District

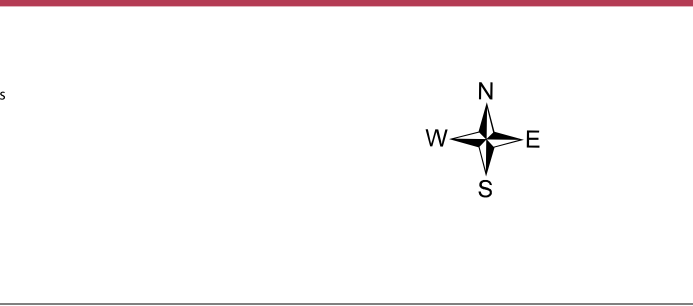
All legal boundaries and names are as of January 1, 2020. The boundaries shown on this map are for Census Bureau statistical data collection and tabulation purposes only; their depiction and designation for statistical purposes does not constitute a determination of jurisdictional authority or rights of ownership or entitlement.

Geographic Vintage: 2020 Census (reference date: January 1, 2020)
 Data Source: U.S. Census Bureau's MA7/TIGER database (TIGER20)
 Map Created by Geography Division: January 12, 2021

U.S. DEPARTMENT OF COMMERCE U.S. Census Bureau

Projection: Albers Equal Area Conic
 Datum: NAD 83
 Spheroid: GRS 80
 1st Standard Parallel: 36 45 55
 2nd Standard Parallel: 39 50 38
 Central Meridian: -92 51 50
 Latitude of Projection's Origin: 35 59 44
 False Easting: 0
 False Northing: 0

The plotted map scale is 1:60,996



Sheet 1 of 1 PARENT sheets
 Total Sheets: 1 (Index 0; Parent 1; Inset 0)

NAME: Barry County (009)
 ENTITY TYPE: County or statistically equivalent entity
 ST: Missouri (29)

2020 CENSUS SD REF MAP (PARENT)
 Sheet ID: 25112900001