


Ibanez



Ibanez

Get Connected :  Ibanez Guitars  @ibanezofficial

2016 FULL LINE CATALOG

Electric Guitars, Electric Bases, Acoustic Guitars, Amplifiers, Effects & Accessories

Electric Guitars, Electric Bases, Acoustic Guitars, Amplifiers, Effects & Accessories 2016

www.ibanez.com
www.ibanezacoustic.com

©2015 Printed in Japan OCT151016 (NA)
- All finishes shown are as close as four-color printing allows.
- All specifications are subject to change without notice.

Ibanez

www.ibanez.com
www.ibanezacoustic.com

Electric Guitars

*RGDIX7MPB SBB (L) /
RGAIX6FM TGF (R)*

Table of Contents

Solid Body Electric Guitars

Signature Models	04-12
RG	13-18
GIO	18-20
miKro	20
RGA	21
RGD	21-22
S	22-24
SA	24-25
FR	25
ARZ	26
GART	26
GAX	26
AR	27
Talman	28-29

Hollow Body Guitars 30-39

Electric Basses 40-57

Acoustic Guitars 58-76

Amplifiers/Effects/Accessories 77-97

Signature Models

Tosin Abasi (Animals As Leaders) 8-STRING



TAM100 **MADE IN JAPAN**

- TAM8 5pc Wenge/Bubinga neck w/KTS™ TITANIUM rods
- 686mm/27" scale
- Quilted Maple top/Basswood body (40mm Body thickness)
- Wenge fretboard w/Mother of Pearl block inlay
- Jumbo frets w/Prestige fret edge treatment
- DiMarzio® Ionizer 8™ pickups
- Coil-tap switch
- FX Edge III-8 bridge
- Gold hardware
- Factory Tuning: 1E, 2B, 3G, 4D, 5A, 6E, 7B, 8E
- String gauge: .010/.013/.017/.030/.042/.054/.064/.074
- Hardshell case included

Tosin Abasi (Animals As Leaders) 8-STRING



TAM10

- TAM8 5pc Maple/Walnut neck
- 686mm/27" scale
- Basswood body (40mm body thickness)
- Rosewood fretboard w/Off-set white dot inlay
- Jumbo frets
- DiMarzio® Ionizer 8™ pickups
- Coil-tap switch
- Gibraltar Standard II-8 bridge
- Black hardware
- Factory Tuning: 1E, 2B, 3G, 4D, 5A, 6E, 7B, 8E
- String gauge: .010/.013/.017/.030/.042/.054/.064/.074
- Hardshell case included

WH
(White)

Jake Bowen (Periphery)



JBM100 **MADE IN JAPAN**

- JBM 5pc Maple/Walnut neck
- Maple top/Mahogany body
- Bound Ebony fretboard w/JBM special inlay on 12th fret
- Jumbo frets w/Prestige fret edge treatment
- DiMarzio® Titan™ pickups
- Lo-Pro Edge tremolo bridge
- Black hardware
- Sperzel Trim-Lok machineheads in gold
- Factory Tuning: 1D, 2A, 3F, 4C, 5G, 6C
- String Gauge: .011/.014/.019/.032/.044/.056
- Hardshell case included

NEW MODEL Jake Bowen (Periphery)



JBM20

- Wizard III 3pc Maple neck
- Maple top/Mahogany body
- Bound Rosewood fretboard w/JBM special inlay on 12th fret
- Jumbo frets
- DiMarzio® Titan™ pickups
- Edge-Zero II tremolo bridge
- Black hardware
- Gotoh® MG-T locking machineheads in gold
- Factory Tuning: 1D, 2A, 3F, 4C, 5G, 6C
- String Gauge: .011/.014/.019/.032/.044/.056

NEW MODEL Jake Bowen (Periphery) 7-STRING



JBM27

- Wizard II-7 3pc Maple neck
- 673mm/26.5" scale
- Maple top/Mahogany body
- Bound Rosewood fretboard w/JBM special inlay on 12th fret
- Jumbo frets
- DiMarzio® Titan™ pickups
- Edge-Zero II-7 tremolo bridge
- Black hardware
- Gotoh® MG-T locking machineheads in gold
- Factory Tuning: 1D#, 2A#, 3F#, 4C#, 5G#, 6D#, 7G#
- String Gauge: .011/.014/.018/.030/.042/.052/.064

Dino Cazares (Fear Factory) 7-STRING



DCM100 **MADE IN JAPAN**

- DCM 3pc Maple/Bubinga neck w/KTS™ TITANIUM rods
- 673mm/26.5" scale
- Mahogany body
- Rosewood fretboard w/Off-set Mother of Pearl inlay
- Jumbo frets w/Prestige fret edge treatment
- Seymour Duncan® Retribution pickup
- Lo-Pro Edge 7 tremolo bridge
- Cosmo black hardware
- Factory Tuning: 1D, 2A, 3F, 4C, 5G, 6D, 7A
- Hardshell case included

Paul Gilbert (Mr. Big)



PREMIUM

PGM80P

- PGM Premium 5pc Maple/Walnut neck w/KTS™ TITANIUM rods
- Ash body
- Rosewood fretboard w/White dot inlay
- Narrow & Tall frets w/Premium fret edge treatment
- DiMarzio® PAF® Master/PGM Single-coil/PAF® Master pickups
- Wilkinson® WV6-SB tremolo bridge
- Chrome hardware
- Gotoh® MG-T locking machineheads
- Soft case included

NT
(Natural)

Paul Gilbert (Mr. Big)



FRM150

- FRM 3pc Mahogany/Maple set-in neck
- 628mm/24.75" scale
- Mahogany body
- Rosewood fretboard w/White dot inlay
- Narrow & Tall frets
- DiMarzio® Air Classic™/Area 67™/Air Classic™ pickups
- Tight-Tune bridge/tailpiece
- Chrome hardware
- Gig bag included

TR
(Transparent Red)

Head (Korn) 7-STRING



KOMRAD20RS

- Wizard II-7 3pc Maple neck
- Basswood body
- Rosewood fretboard
- Medium frets
- DiMarzio® PAF® 7 pickups
- Fixed bridge
- Chrome hardware
- Factory Tuning: 1D, 2A, 3F, 4C, 5G, 6D, 7A

Herman Li (DragonForce)



TVF
(Transparent Violet Flat)

EGEN18

MADE IN JAPAN

- EGEN 5pc Maple/Walnut neck
- Flamed Maple top/Mahogany body
- Rosewood fretboard w/Abalone oval inlay
- Jumbo frets w/Prestige fret edge treatment
- DiMarzio® HLM pickups
- Edge-Zero tremolo bridge w/ZPS3
- Gold hardware
- Hardshell case included

Herman Li (DragonForce)



PLB
(Platinum Blonde)

EGEN8

- Wizard III 3pc Maple neck
- Flamed Maple top/African Mahogany body
- Rosewood fretboard w/Abalone oval inlay
- Jumbo frets
- V7/S1/V8 pickups
- Edge III tremolo bridge (Herman Li Special)
- Gold hardware

Kiko Loureiro (Angra/Megadeth)



TRR
(Transparent Ruby Red)

KIKO100

MADE IN JAPAN

- KIKO100 5pc Maple/Walnut neck
- Flamed Maple top/Alder body
- Rosewood fretboard w/KIKO special inlay on 12th fret
- Jumbo frets w/Prestige fret edge treatment
- DiMarzio® KIKO original pickups
- Coil-tap switch on volume control (push/pull)
- Edge tremolo bridge
- Cosmo black hardware
- String Gauge: .010/.013/.017/.026/.036/.046
- Hardshell case included

NEW MODEL Kiko Loureiro (Angra/Megadeth)



TRB
(Transparent Red Burst)

KIKOSP2

- KIKOSP Maple neck
- Flamed Maple Art Grain top/Poplar body
- Rosewood fretboard w/KIKO special inlay on 12th fret
- Jumbo frets
- Infinity R pickups
- Std. DL tremolo bridge
- Cosmo black hardware

Mårten Hagström/Fredrik Thordendal (Meshuggah) 8-STRING



M8M

MADE IN JAPAN

- M8M 5pc Maple/Bubinga neck-through
- 747mm/29.4" scale
- Alder wing body
- Rosewood fretboard
- Jumbo frets w/Prestige fret edge treatment
- Lundgren Model M8 pickup
- FX Edge III-8 bridge
- Black hardware
- Factory Tuning: 1D#, 2A#, 3F#, 4C#, 5G#, 6D#, 7A#, 8F
- String Gauge: .009/.011/.016/.026/.036/.046/.052/.070
- Hardshell case included

Mårten Hagström/Fredrik Thordendal (Meshuggah) 8-STRING



WK
(Weathered Black)

M80M

- M80M 5pc Maple/Walnut neck w/KTS™ TITANIUM rods
- 747mm/29.4" scale
- Ash body
- Rosewood fretboard
- Jumbo frets
- Lundgren Model M8P pickup
- FX Edge III-8 bridge
- Black hardware
- Factory Tuning: 1D#, 2A#, 3F#, 4C#, 5G#, 6D#, 7A#, 8F
- String Gauge: .009/.011/.016/.024/.032/.042/.054/.065
- Hardshell case included

NEW MODEL Chris Miller (You Me At Six)



BKF
(Black Flat)

CMM2

- CMM 1pc Maple neck
- Mahogany body
- Maple fretboard w/Black dot inlay
- Medium frets
- Std. SS-1/H pickups
- Coil-tap switch on tone control (push/pull)
- Tight-Tune bridge
- Chrome hardware

Munky (Korn) 7-STRING



APEX200

MADE IN JAPAN

- APEX 5pc Maple/Wenge neck
- Alder body
- Rosewood fretboard w/APEX200 special inlay on 12th fret
- Jumbo frets w/Prestige fret edge treatment
- DiMarzio® Blaze™ pickups
- Lo-Pro Edge 7 tremolo bridge w/U-bar
- Black hardware
- Factory Tuning: 1D, 2A, 3F, 4C, 5G, 6D, 7A
- String Gauge: .010/.013/.017/.030/.042/.052/.060
- Hardshell case included

Munky (Korn) 7-STRING



APEX20

- APEX 3pc Maple neck
- Basswood body
- Rosewood fretboard
- Jumbo frets
- DiMarzio® Blaze™ pickups
- Gibraltar Standard II-7 bridge
- Black hardware
- Factory Tuning: 1D, 2A, 3F, 4C, 5G, 6D, 7A
- String Gauge: .010/.013/.017/.026/.036/.046/.054

NEW MODEL Noodles (The Offspring)



SB
(Sunburst)

NDM4

- NDM 3pc Maple neck
- Basswood body
- Rosewood fretboard w/White dot inlay
- Medium frets
- Super 9 pickups
- Fixed bridge
- Chrome hardware

Joe Satriani



MCP
(Muscle Car Purple)

JS2450 **MADE IN JAPAN**

- JS 3pc Maple/Bubinga neck
- Alder body
- Rosewood fretboard w/Mother of Pearl dot inlay
- W/6105 frets w/Prestige fret edge treatment
- DiMarzio® Satch Track™/Mo' Joe™ pickups
- Hi-pass filter on volume control (push/pull)
- Coil-tap switch on tone control (push/pull)
- Edge tremolo bridge
- Chrome hardware
- Ultralite Tremolo Arm™ included
- Hardshell case included

Joe Satriani



MCO
(Muscle Car Orange)

JS2410 **MADE IN JAPAN**

- JS 3pc Maple/Bubinga neck
- Alder body
- Rosewood fretboard w/Mother of Pearl dot inlay
- W/6105 frets w/Prestige fret edge treatment
- DiMarzio® Satch Track™/Mo' Joe™ pickups
- Hi-pass filter on volume control (push/pull)
- Coil-tap switch on tone control (push/pull)
- Edge tremolo bridge
- Chrome hardware
- Ultralite Tremolo Arm™ included
- Hardshell case included

Joe Satriani



CA
(Candy Apple)

JS1200 **MADE IN JAPAN**

- JS 1pc Maple neck
- Basswood body
- Rosewood fretboard w/Abalone dot inlay
- W/6105 frets w/Prestige fret edge treatment
- DiMarzio® PAF Joe™/FRED® pickups
- Hi-pass filter on volume control (push/pull)
- Coil-tap switch on tone control (push/pull)
- Edge tremolo bridge
- Chrome hardware
- Ultralite Tremolo Arm™ included
- Hardshell case included

Joe Satriani



CA
(Candy Apple)

PREMIUM

JS24P

- JS 3pc Maple/Bubinga neck w/KTS™ TITANIUM rods
- American Basswood body
- Rosewood fretboard w/White dot inlay
- Medium frets w/Premium fret edge treatment
- DiMarzio® The Chopper™/Mo' Joe™ pickups
- Hi-pass filter on volume control (push/pull)
- Coil-tap switch on tone control (push/pull)
- Edge tremolo bridge
- Chrome hardware
- Soft case included

Joe Satriani



WH
(White)

JS140

- JS 1pc Maple neck
- Basswood body
- Rosewood fretboard w/White dot inlay
- Medium frets
- Infinity RD/Quantum pickups
- Coil-tap switch on tone control (push/pull)
- Edge-Zero II tremolo bridge
- Chrome hardware

Paul Stanley (KISS)



PS1CM **MADE IN JAPAN**

- PS 3pc Maple set-in neck (smooth heel)
- Maple top/Mahogany body
- Bound Ebony fretboard w/Acrylic & Abalone block inlay
- Medium frets w/Prestige fret edge treatment
- Half-Bone/Half-Brass nut
- Seymour Duncan® '59/Custom 5™ pickups
- Gibraltar bridge w/Sustain block/Quik Change Classic tailpiece
- Chrome hardware
- Hardshell case included

Paul Stanley (KISS)



BK
(Black)

PS10 **MADE IN JAPAN**

- PS 3pc Maple set-in neck (smooth heel)
- Maple top/Mahogany body
- Bound Ebony fretboard w/Acrylic & Abalone block inlay
- Medium frets w/Prestige fret edge treatment
- Half-Bone/Half-Brass nut
- Seymour Duncan® '59/Custom 5™ pickups
- Gibraltar bridge w/Sustain block/Quik Change Classic tailpiece
- Chrome hardware
- Hardshell case included

Paul Stanley (KISS)



BK
(Black)

PS120

- PS 3pc Mahogany set-in neck
- Maple top/Mahogany body
- Bound Ebony fretboard w/Acrylic & Abalone block inlay
- Medium frets
- Seymour Duncan® '59/Custom 5™ pickups
- Full Tune III bridge/Quik Change III tailpiece
- Chrome hardware
- Gig bag included

NEW MODEL Paul Stanley (KISS)



SSP
(Silver Sparkle)

PS120SP

- PS 3pc Mahogany set-in neck
- Maple top/Mahogany body
- Bound Ebony fretboard w/Acrylic & Abalone block inlay
- Medium frets
- Seymour Duncan® '59/Custom 5™ pickups
- Full Tune III bridge/Quik Change III tailpiece
- Chrome hardware
- Gig bag included

Paul Stanley (KISS)



BK
(Black)

PS40

- PS Maple neck
- Poplar body
- Rosewood fretboard w/White dot inlay
- Medium frets
- Infinity R pickups
- Full Tune III bridge/tailpiece
- Chrome hardware
- Gig bag included

Mick Thomson (Slipknot)



BK
(Black)

MTM1

- Wizard III 5pc Maple/Walnut neck-through w/KTS™ TITANIUM rods
- Mahogany wing body
- Bound Rosewood fretboard w/MTM1 special inlay
- Jumbo frets
- Seymour Duncan® Blackouts™ EMTY™ pickups
- FX Edge III bridge
- Black hardware
- Factory Tuning: 1C#, 2G#, 3E, 4B, 5F#, 6B
- String Gauge: .011/.014/.018/.028/.038/.049
- Hardshell case included

Mick Thomson (Slipknot)



WH
(White)

MTM20

- Wizard III 5pc Maple/Walnut neck
- Mahogany body
- Bound Rosewood fretboard w/MTM20 special inlay
- Jumbo frets
- Duncan® HB-105MT pickups
- FX Edge III bridge
- Black hardware
- Factory Tuning: 1C#, 2G#, 3E, 4B, 5F#, 6B
- String Gauge: .011/.014/.018/.028/.038/.049

Andy Timmons



SB
(Sunburst)

AT100CL

MADE IN JAPAN

- AT 1pc Maple neck
- Alder body
- Maple fretboard w/Black dot inlay
- Jumbo frets
- Bone nut
- DiMarzio® The Cruiser®/The Cruiser®/AT-1™ pickups
- Wilkinson®-Gotoh® VSVG tremolo bridge
- Chrome hardware
- Gotoh® H.A.P®-M locking machineheads
- Hardshell case included

Andy Timmons



SB
(Sunburst)

AT10P

- AT 1pc Maple neck w/KTS™ TITANIUM rods
- Alder body
- Maple fretboard w/Black dot inlay
- Jumbo frets w/Premium fret edge treatment
- Graph Tech® nut
- DiMarzio® The Cruiser®/The Cruiser®/AT-1™ pickups
- Wilkinson® WV6-SB tremolo bridge
- Chrome hardware
- Soft case included

NEW MODEL Sam Totman (DragonForce)



MGS
(Metallic Gray Sunburst)

STM3

- Wizard III Maple neck
- Mahogany body
- Bound Rosewood fretboard w/Acrylic angled block inlay
- Jumbo frets
- Quantum pickups
- Edge-Zero II tremolo bridge
- Cosmo black hardware
- Hardshell case included

Steve Vai



FP2
(Floral Pattern 2)

JEM77

MADE IN JAPAN

- JEM 5pc Maple/Walnut neck
- Basswood body
- Rosewood fretboard w/Tree of Life inlay
- W/6105 frets w/Prestige fret edge treatment
- DiMarzio® Evolution®/Evolution®/Evo2™ pickups
- Edge tremolo bridge
- Chrome hardware
- Ultralite Tremolo Arm™ included
- Hardshell case included

Steve Vai



WH
(White)

JEM7V

MADE IN JAPAN

- JEM 5pc Maple/Walnut neck
- Alder body
- Rosewood fretboard w/Tree of Life inlay
- W/6105 frets w/Prestige fret edge treatment
- DiMarzio® Evolution® pickups
- Edge tremolo bridge
- Gold hardware
- Ultralite Tremolo Arm™ included
- Hardshell case included

Steve Vai



SFG
(Sea Foam Green)

JEM70V

- Wizard 5pc Maple/Walnut neck w/KTS™ TITANIUM rods
- American Basswood body
- Rosewood fretboard w/Tree of Life inlay
- Jumbo frets w/Premium fret edge treatment
- DiMarzio® Evolution® pickups
- Edge tremolo bridge
- Chrome hardware
- Soft case included

Steve Vai



BFP
(Blue Floral Pattern)

JEM77P

- Wizard 5pc Maple/Walnut neck w/KTS™ TITANIUM rods
- American Basswood body
- Maple fretboard w/Tree of Life inlay
- Jumbo frets w/Premium fret edge treatment
- DiMarzio® Gravity Storm™/Evolution®/Gravity Storm™ pickups
- Edge-Zero II tremolo bridge
- Cosmo black hardware
- Soft case included

Steve Vai



WH
(White)

JEMJR

- Wizard III Maple neck
- Mahogany body
- Rosewood fretboard w/Tree of Life inlay
- Jumbo frets
- Quantum pickups
- Std. DL tremolo bridge
- Cosmo black hardware

Steve Vai 7-STRING

PREMIUM UV70P



BK
(Black)

- Wizard-7 5pc Maple/Walnut neck w/KTS™ TITANIUM rods
- American Basswood body
- Rosewood fretboard w/Green dot inlay
- Jumbo frets w/Premium fret edge treatment
- DiMarzio® Blaze™ pickups
- Edge-Zero II-7 tremolo bridge
- Cosmo black hardware
- Soft case included

Steve Vai 7-STRING

PREMIUM UV71P



WH
(White)

- Wizard-7 5pc Maple/Walnut neck w/KTS™ TITANIUM rods
- American Basswood body
- Rosewood fretboard w/Disappearing Pyramid inlay
- Jumbo frets w/Premium fret edge treatment
- DiMarzio® Blaze™ pickups
- Edge-Zero II-7 tremolo bridge
- Cosmo black hardware
- Soft case included

Paul Waggoner (Between The Buried And Me)



PWM100 **MADE IN JAPAN**

- PWM 5pc Maple/Bubinga neck
- Ash body (44mm Body Thickness)
- Rosewood fretboard w/Off-set White dot inlay
- Jumbo frets w/Prestige fret edge treatment
- Mojotone® PW Hornet pickups
- Coil-tap switch
- Lo-Pro Edge tremolo bridge
- Cosmo black hardware
- Factory Tuning: 1C#, 2G#, 3E, 4B, 5F#, 6C#
- String Gauge: .012/.016/.024w/.034/.046/.059
- Hardshell case included

NEW MODEL Paul Waggoner (Between The Buried And Me)

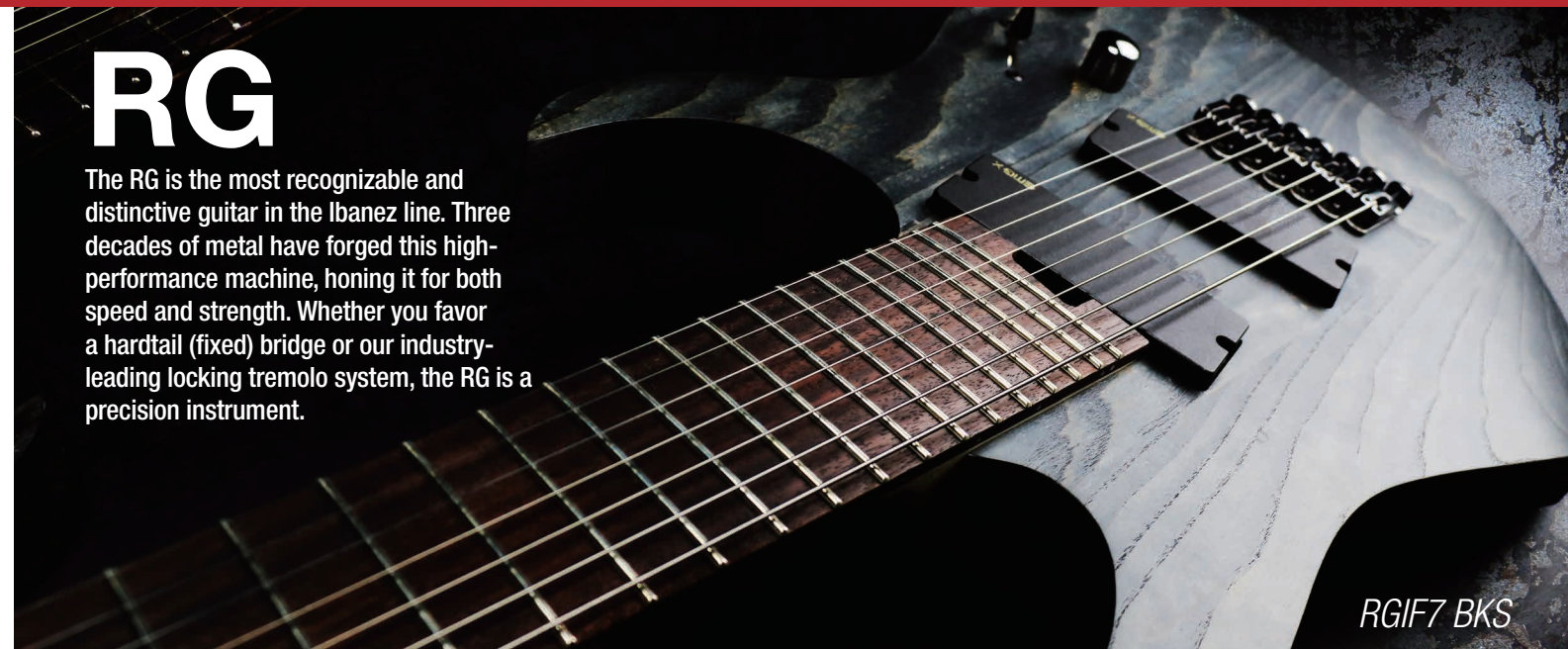


PWM10

- Wizard III 3pc Maple/Bubinga neck
- Ash body (44mm Body Thickness)
- Rosewood fretboard w/Off-set White dot inlay
- Jumbo frets
- Mojotone® PW Hornet pickups
- Coil-tap switch
- Edge-Zero II tremolo bridge
- Cosmo black hardware
- Factory Tuning: 1C#, 2G#, 3E, 4B, 5F#, 6C#
- String Gauge: .012/.016/.024w/.034/.046/.059

RG

The RG is the most recognizable and distinctive guitar in the Ibanez line. Three decades of metal have forged this high-performance machine, honing it for both speed and strength. Whether you favor a hardtail (fixed) bridge or our industry-leading locking tremolo system, the RG is a precision instrument.



RG1F7 BKS



MYM
(Mystic Night Metallic)

WPM
(White Pearl Metallic)

Prestige

RG2550Z **MADE IN JAPAN**

- Wizard HP 5pc Maple/Walnut neck
- Basswood body
- Rosewood fretboard w/Wedge sharktooth inlay
- Jumbo frets w/Prestige fret edge treatment
- DiMarzio® Air Norton™/True Velvet™/The Tone Zone® pickups
- Edge-Zero tremolo bridge w/ZPS3
- Cosmo black hardware
- Hardshell case included



GK
(Galaxy Black)
NEW FINISH

Prestige

RG655 **MADE IN JAPAN**

- Super Wizard HP 5pc Maple/Walnut neck
- Basswood body
- Rosewood fretboard w/White dot inlay
- Jumbo frets w/Prestige fret edge treatment
- DiMarzio® Air Norton™/True Velvet™/The Tone Zone® pickups
- Edge tremolo bridge
- Cosmo black hardware
- Hardshell case included



CBM
(Cobalt Blue Metallic)

Prestige **RG655M** **MADE IN JAPAN**

- Super Wizard HP 5pc Maple/Walnut neck
- Basswood body
- Maple fretboard w/Black dot inlay
- Jumbo frets w/Prestige fret edge treatment
- DiMarzio® Air Norton™/True Velvet™/The Tone Zone® pickups
- Edge tremolo bridge
- Cosmo black hardware
- Hardshell case included



Prestige

RG652FX **MADE IN JAPAN**

- Super Wizard HP 5pc Maple/Walnut neck
- Basswood body
- Rosewood fretboard w/White dot inlay
- Jumbo frets w/Prestige fret edge treatment
- DiMarzio® Air Norton™/The Tone Zone® pickups
- Gibraltar Standard II bridge
- Cosmo black hardware
- Gotoh® MG-T locking machineheads
- Hardshell case included

GK
(Galaxy Black)

7-STRING



Prestige

RG752FX **MADE IN JAPAN**

- Wizard-7 5pc Maple/Wenge neck
- Basswood body
- Rosewood fretboard w/White dot inlay
- Jumbo frets w/Prestige fret edge treatment
- DiMarzio® PAF® 7 pickups
- Gibraltar Standard II-7 bridge
- Cosmo black hardware
- Gotoh® MG-T locking machineheads
- Hardshell case included

SPM
(Subterranean Purple Metallic)

NEW MODEL 8-STRING



Prestige

RG852 **MADE IN JAPAN**

- Ultra-8 5pc Maple/Wenge neck
- 686mm/27" scale
- Basswood body
- Rosewood fretboard w/White dot inlay
- Jumbo frets w/Prestige fret edge treatment
- EMG® 808 pickups
- Gibraltar Standard II-8 bridge
- Cosmo black hardware
- Gotoh® MG-T locking machineheads
- Factory Tuning: 1D#, 2A#, 3F#, 4C#, 5G#, 6D#, 7A#, 8F
- String Gauge: .009/.011/.016/.024/.032/.042/.054/.065
- Hardshell case included

GK
(Galaxy Black)

9-STRING



Prestige

RG90BKP **MADE IN JAPAN**

- Wizard-9 5pc Maple/Wenge neck
- 712mm/28" scale
- Basswood body
- Rosewood fretboard w/Mother of Pearl dot inlay
- Jumbo frets w/Prestige fret edge treatment
- Bare Knuckle Canine pickups
- Gibraltar Standard II-9 bridge
- Cosmo black hardware
- Gotoh® machineheads for 9 string
- Factory Tuning: 1E, 2B, 3G, 4D, 5A, 6E, 7B, 8F#, 9C#
- String Gauge: .009/.011/.016/.024/.032/.042/.054/.075/.090
- Hardshell case included

ISH
(Invisible Shadow)

NEW MODEL



PREMIUM

RG970WQMZ

- Wizard 5pc Wenge/Bubinga neck
- Quilted Maple top/American Basswood body
- Bound Rosewood fretboard w/Mother of Pearl off-set dot inlay
- Jumbo frets w/Premium fret edge treatment
- DiMarzio® IBZ pickups
- Edge-Zero II tremolo bridge w/ZPS3Fe
- Cosmo black hardware
- Soft case included

BIB
(Black Ice Burst)

NEW MODEL 7-STRING



PREMIUM

RG927WFXZC

- Wizard-7 5pc Wenge/Bubinga neck
- Zircote top/American Basswood body
- Bound Rosewood fretboard w/Mother of Pearl off-set dot inlay
- Jumbo frets w/Premium fret edge treatment
- DiMarzio® IBZ-7 pickups
- Tight-End R-7 bridge
- Cosmo black hardware
- Soft case included

NTF
(Natural Flat)



PREMIUM

RG721RW

- Wizard 5pc Maple/Walnut neck
- Rosewood top/American Basswood body
- Bound Rosewood fretboard w/Off-set white dot inlay
- Jumbo frets w/Premium fret edge treatment
- CAP-VM pickups
- Tight-End R bridge
- Cosmo black hardware
- Soft case included

CNF
(Charcoal Brown Flat)



PREMIUM

RG721FM

- Wizard 5pc Maple/Walnut neck
- Flamed Maple top/American Basswood body
- Bound Rosewood fretboard w/Off-set white dot inlay
- Jumbo frets w/Premium fret edge treatment
- CAP-VM pickups
- Tight-End R bridge
- Cosmo black hardware
- Soft case included

NTF
(Natural Flat)

NEW MODEL



IRON LABEL

RGIT20FE

- Nitro Wizard 7pc Maple/Walnut neck-through w/Graphite reinforcement rods
- Ash wing body
- Ebony fretboard
- Jumbo frets
- EMG® 60/81 pickups
- Kill switch
- Gibraltar Standard II bridge
- Cosmo black hardware
- Gotoh® MG-T locking machineheads

TGF
(Transparent Gray Flat)



IRON LABEL

RGIR20BFE

- Nitro Wizard 3pc Maple/Bubinga neck
- Mahogany body
- Bound Rosewood fretboard
- Jumbo frets
- EMG® 60/81 pickups
- Kill switch
- Gibraltar Standard II bridge
- Black hardware

WNF
(Walnut Flat)

NEW MODEL 7-STRING



RGIR27BFE

- Nitro Wizard-7 3pc Maple/Bubinga neck
- Mahogany body
- Bound Rosewood fretboard
- Jumbo frets
- EMG® 707 pickups
- Kill switch
- Gibraltar Standard II-7 bridge
- Black hardware

WNF
(Walnut Flat)

Baritone



RGIB6

- Nitro Baritone 3pc Maple/Bubinga neck
- 712mm/28" scale
- Basswood body
- Bound Rosewood fretboard
- Jumbo frets
- EMG® 60/81 pickups
- Kill switch
- Gibraltar Standard II bridge
- Cosmo black hardware
- Factory Tuning: 1B, 2F#, 3D, 4A, 5E, 6B
- String Gauge: .014/.018/.026/.044/.056/.068

BK
(Black)

7-STRING Multi Scale



RGIF7

- Nitro Wizard-7 Multi Scale 5pc Maple/Bubinga neck
- 686mm/27" scale at 7th string, 648mm/25.5" scale at 1st string
- Ash body
- Rosewood fretboard
- Jumbo frets
- EMG® 808X pickups
- Mono-rail bridge
- Cosmo black hardware

BKS
(Black Stained)

8-STRING Multi Scale



RGIF8

- Nitro Wizard-8 Multi Scale 5pc Maple/Bubinga neck
- 692mm/27.2" scale at 8th string, 648mm/25.5" scale at 1st string
- Ash body
- Rosewood fretboard
- Jumbo frets
- EMG® 909X pickups
- Mono-rail bridge
- Cosmo black hardware

BKS
(Black Stained)

NEW MODEL



TGF
(Transparent Gray Flat)

RG370PBZ

- Wizard III Maple neck
- Poplar Burl top/Mahogany body
- Bound Rosewood fretboard w/White dot inlay
- Jumbo frets
- Quantum pickups
- Edge-Zero II tremolo bridge w/ZPS3Fe
- Black hardware

NEW MODEL



WK
(Weathered Black)

RG370ZB

- Wizard III Maple neck
- Mahogany body
- Rosewood fretboard w/Off-set white dot inlay
- Jumbo frets
- Quantum pickups
- Edge-Zero II tremolo bridge w/ZPS3Fe
- Black hardware



WH
(White)

RG350DXZ

- Wizard III Maple neck
- Mahogany body
- Bound Rosewood fretboard w/Sharktooth inlay
- Jumbo frets
- Quantum pickups
- Edge-Zero II tremolo bridge w/ZPS3Fe
- Black hardware



BKF
(Black Flat)

RG421EX

- Wizard III Maple neck
- Mahogany body
- Bound Rosewood fretboard w/White dot inlay
- Jumbo frets
- Quantum pickups
- Fixed bridge
- Black hardware



MOL
(Mahogany Oil)

RG421

- Wizard III Maple neck
- Mahogany body
- Rosewood fretboard w/White dot inlay
- Jumbo frets
- Quantum pickups
- Fixed bridge
- Cosmo black hardware

7-STRING



WH
(White)

RG7421

- Wizard II-7 3pc Maple neck
- Mahogany body
- Rosewood fretboard w/White dot inlay
- Jumbo frets
- Quantum pickups
- Fixed bridge
- Black hardware

8-STRING



BK
(Black)

RG8

- Wizard II-8 5pc Maple/Walnut neck
- 686mm/27" scale
- Mahogany body
- Rosewood fretboard w/White dot inlay
- Jumbo frets
- IBZ-8 pickups
- Fixed bridge
- Black hardware
- Factory Tuning: 1D#, 2A#, 3F#, 4C#, 5G#, 6D#, 7A#, 8F
- String Gauge: .009/.011/.016/.024/.032/.042/.054/.065

NEW MODEL 9-STRING



BI
(Black Ice)

RG9QM

- Wizard-9 5pc Maple/Bubinga neck
- 712mm/28" scale
- Quilted Maple top/Basswood body
- Rosewood fretboard w/White dot inlay
- Jumbo frets
- Graph Tech® nut
- Quantum pickups
- Gibraltar Standard II-9 bridge
- Cosmo black hardware
- Factory Tuning: 1E, 2B, 3G, 4D, 5A, 6E, 7B, 8F#, 9C#
- String Gauge: .009/.011/.016/.024/.032/.042/.054/.075/.090
- Hardshell case included

GIO

A guitar doesn't have to cost a bundle to sound good. The GIO series was developed for players who want Ibanez quality in a more affordable package. Not only do they look and play better than everything else in their price range, but their rigorous inspection, set-up and warranty is the same as Ibanez's more expensive models.



BKN
(Black Night)



DVM
(Deep Violet Metallic)
NEW FINISH

GRG250B

- GRG Maple neck
- Poplar body
- Rosewood fretboard w/White dot inlay
- Jumbo frets
- Infinity R pickups
- Std. DL tremolo bridge
- Black hardware



BKN
(Black Night)
NEW FINISH

GRG121EX

- GRG Maple neck
- Poplar body
- Rosewood fretboard w/White dot inlay
- Jumbo frets
- Infinity R pickups
- Fixed bridge
- Black hardware



BKN
(Black Night)



PW
(Pearl White)

GRG150DX

- GRG Maple neck
- Poplar body
- Bound Rosewood fretboard w/Sharktooth inlay
- Jumbo frets
- Infinity R pickups
- FAT-10 tremolo bridge
- Chrome hardware

7-STRING



BKF
(Black Flat)

GRG7221

- GRG Maple neck
- Poplar body
- Rosewood fretboard w/White dot inlay
- Jumbo frets
- Infinity R pickups
- Fixed bridge
- Black hardware



TKS
(Transparent Black Sunburst)



TRB
(Transparent Red Burst)

GRX70QA

- GRX Maple neck
- Quilted Maple Art Grain top/Poplar body
- Rosewood fretboard w/White dot inlay
- Medium frets
- Infinity R pickups
- FAT-6 tremolo bridge
- Chrome hardware

Left-handed



TRB
(Transparent Red Burst)

GRX70QAL

- GRX Maple neck
- Quilted Maple Art Grain top/Poplar body
- Rosewood fretboard w/White dot inlay
- Medium frets
- Infinity R pickups
- FAT-6 tremolo bridge
- Chrome hardware



WH
(White)

GRX50

- GRX Maple neck
- Poplar body
- Rosewood fretboard w/White dot inlay
- Medium frets
- Infinity R pickups
- Std. tremolo bridge
- Chrome hardware



TFB
(Tri Fade Burst)

GRX40

- GRX Maple neck
- Poplar body
- Rosewood fretboard w/White dot inlay
- Medium frets
- Infinity R pickups
- Std. tremolo bridge
- Chrome hardware



BKN
(Black Night)

GRX22

- GRX Maple neck
- Poplar body
- Rosewood fretboard w/White dot inlay
- Medium frets
- Infinity R pickups
- Std. tremolo bridge
- Chrome hardware



CA
(Candy Apple)

miKro

RG miKro puts out sound way beyond its size. Perfect for young rockers on the way up or seasoned road warriors on the tour bus.



BKN
(Black Night)

GRGM21GB

- GRGM Maple neck
- 564mm/22.2" scale
- Poplar body
- Rosewood fretboard w/Sharktooth inlay
- Medium frets
- Infinity R pickups
- Fixed bridge
- Chrome hardware
- Gig bag included



WH
(White)

RGA

Nothing breathes inspiration into your playing like the feel of a precision made instrument, capable of interpreting your every move with power and accuracy. Enter the Ibanez RGA—a solid body specifically built to handle the heaviest, most physically demanding music you can conjure up. The RGA's unique, sleekly sculpted top offers unrestricted playability for full-throttle power chording or heavy riffing without fear of digging into the body.

NEW MODEL



TGF
(Transparent Gray Flat)



RGAIX6FM

- Nitro Wizard 3pc Maple/Bubinga neck
- Flamed Maple top/Mahogany body
- Bound Ebony fretboard
- Jumbo frets
- DiMarzio® Fusion Edge pickups
- Coil-tap switch
- Gibraltar Standard II bridge
- Black hardware
- Gotoh® MG-T locking machineheads

NEW MODEL 7-STRING

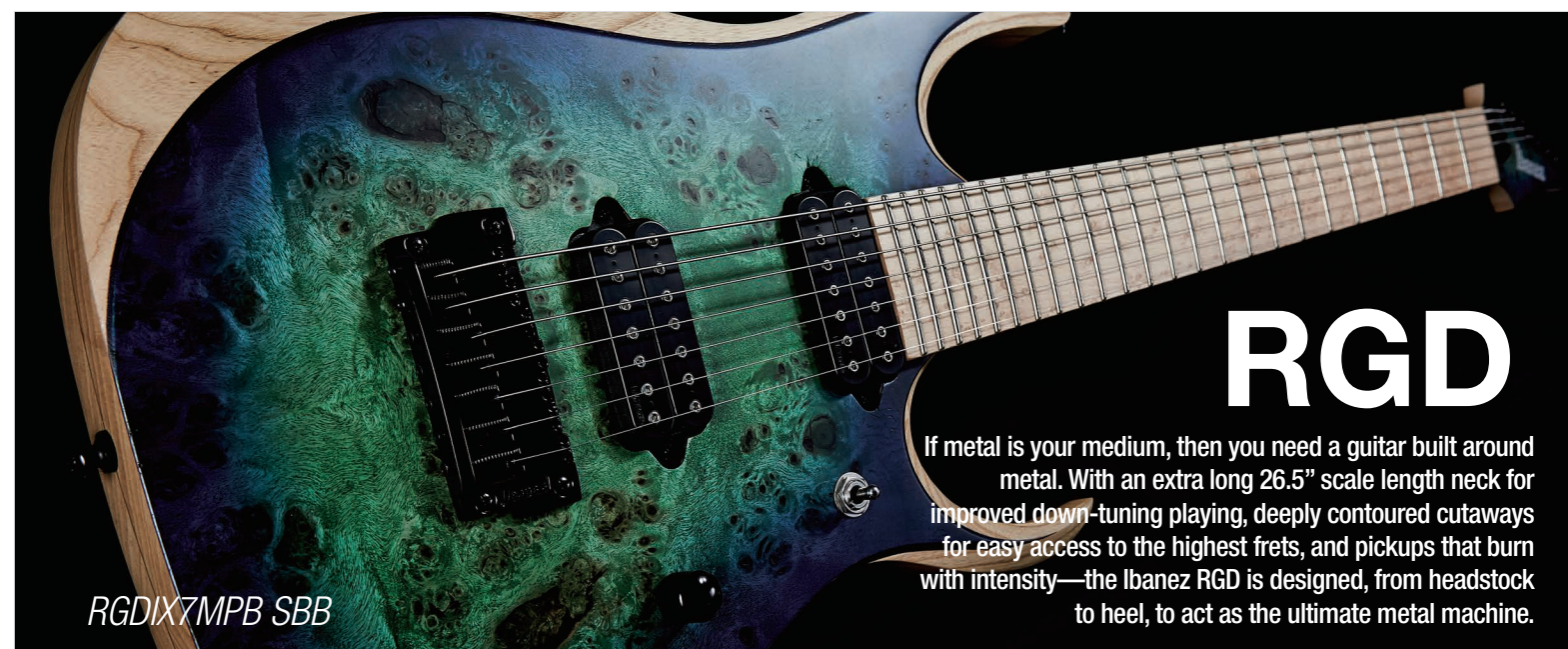


TGF
(Transparent Gray Flat)



RGAIX7FM

- Nitro Wizard-7 3pc Maple/Bubinga neck
- Flamed Maple top/Mahogany body
- Bound Ebony fretboard
- Jumbo frets
- DiMarzio® Fusion Edge pickups
- Coil-tap switch
- Gibraltar Standard II-7 bridge
- Black hardware
- Gotoh® MG-T locking machineheads



RGD

If metal is your medium, then you need a guitar built around metal. With an extra long 26.5" scale length neck for improved down-tuning playing, deeply contoured cutaways for easy access to the highest frets, and pickups that burn with intensity—the Ibanez RGD is designed, from headstock to heel, to act as the ultimate metal machine.

RGDIX7MPB SBB

7-STRING



ISH
(Invisible Shadow)

RGD7UC

MADE IN JAPAN

- Wizard-7 5pc Maple/Wenge neck w/KTS™ TITANIUM rods
- 673mm/26.5" scale
- Basswood body
- Bound Ebony fretboard
- Jumbo frets w/Prestige fret edge treatment
- Bare Knuckle Aftermath 7 pickups
- Tight-End R-7 bridge
- Cosmo black hardware
- Gotoh® MG-T locking machineheads
- Factory Tuning: 1D, 2A, 3F, 4C, 5G, 6D, 7A
- String Gauge: .010/.013/.017/.026/.036/.046/.059
- Hardshell case included

7-STRING



Prestige

RGD2127FX

MADE IN JAPAN

- Wizard-7 5pc Maple/Wenge neck w/KTS™ TITANIUM rods
- 673mm/26.5" scale
- Basswood body
- Rosewood fretboard w/White dot inlay
- Jumbo frets w/Prestige fret edge treatment
- V77/V87 Custom pickups
- Tight-End R-7 bridge
- Cosmo black hardware
- Factory Tuning: 1D, 2A, 3F, 4C, 5G, 6D, 7A
- String Gauge: .010/.013/.017/.026/.036/.046/.059
- Hardshell case included

ISH
(Invisible Shadow)

NEW MODEL 7-STRING



IRON LABEL

RGDIX7MPB

- Nitro Wizard-7 3pc Maple/Bubinga neck
- 673mm/26.5" scale
- Poplar Burl top/Layered Ash body
- Birdseye Maple fretboard
- Jumbo frets
- DiMarzio® Fusion Edge pickups
- Gibraltar Standard II-7 bridge
- Black hardware
- Gotoh® MG-T locking machineheads
- Factory Tuning: 1D, 2A, 3F, 4C, 5G, 6D, 7A
- String Gauge: .010/.013/.017/.026/.036/.046/.059

SBB
(Surreal Blue Burst)

S The cutting edge of Ibanez design, the S series continues to be a marvel of form and function. Its signature body shape - sculpted, lightweight, and mahogany - is stronger and more musically responsive than guitars weighing twice as much. The S series is still a rock 'n' roll version of a quick, graceful, and potentially lethal weapon.



Prestige

S5570Q

MADE IN JAPAN

- Super Wizard HP 5pc Maple/Walnut neck w/KTS™ TITANIUM rods
- Quilted Maple top/Mahogany body
- Rosewood fretboard w/Off-set white dot inlay
- Jumbo frets w/Prestige fret edge treatment
- HGD1/ST2/HGD2 pickups
- Lo-Pro Edge tremolo bridge
- Cosmo black hardware
- Hardshell case included

RBB
(Regal Brown Burst)
NEW FINISH



PREMIUM

S970WRW

- Wizard 5pc Wenge/Bubinga neck
- Rosewood top/African Mahogany body
- Rosewood fretboard w/Mother of Pearl off-set dot inlay
- Jumbo frets w/Premium fret edge treatment
- CAP-CL1/VM1S/CL2 pickups
- Edge-Zero II tremolo bridge
- Cosmo black hardware
- Soft case included

NT
(Natural)



IRON LABEL

SIX70FDBG

- Nitro Wizard 3pc Maple/Bubinga neck
- Bubinga top/Mahogany body w/Abalone binding
- Bound Ebony fretboard
- Jumbo frets
- DiMarzio® Air Norton™/True Velvet™/The Tone Zone® pickups
- Gibraltar Standard II bridge
- Gold hardware

NT
(Natural)



CNF
(Charcoal Brown Flat)
NEW FINISH

S770PB

- Wizard III Maple neck
- Poplar Burl top/Mahogany body
- Bound Rosewood fretboard w/Off-set white dot inlay
- Jumbo frets
- Quantum pickups
- Edge-Zero II tremolo bridge
- Cosmo black hardware

NEW MODEL



NTF
(Natural Flat)

S771PB

- Wizard III Maple neck
- Poplar Burl top/Mahogany body
- Bound Rosewood fretboard w/Off-set white dot inlay
- Jumbo frets
- Quantum pickups
- Fixed bridge
- Cosmo black hardware



SPB
(Sapphire Blue)

S670QM

- Wizard III Maple neck
- Quilted Maple top/Mahogany body
- Bound Rosewood fretboard w/Off-set white dot inlay
- Jumbo frets
- Quantum pickups
- Edge-Zero II tremolo bridge
- Cosmo black hardware



MOL
(Mahogany Oil)

S521

- Wizard III Maple neck
- Mahogany body
- Rosewood fretboard w/Off-set white dot inlay
- Jumbo frets
- Quantum pickups
- Fixed bridge
- Cosmo black hardware

NEW MODEL



GP
(Gray Pewter)

GS370DX

- GS Maple neck
- Poplar body
- Bound Rosewood fretboard w/Sharktooth inlay
- Jumbo frets
- Infinity R pickups
- Std. DL tremolo bridge
- Black hardware

Left-handed



BBT
(Brown Burst)

SA160FML

- SA 3pc Maple neck
- Flamed Maple top/Mahogany body
- Rosewood fretboard w/White dot inlay
- Jumbo frets
- Quantum pickups
- SAT Pro II tremolo bridge
- Chrome hardware

SA Built for versatility, the SA is musical chameleon. From clean rhythm to crunchy blues, all the way out to the most molten of metal, the SA shines in every genre. Its arched top emphasizes the beauty of the SA's many visual treatments, from straight-ahead solid colors to a stunning quilted grained maple with transparent finishes. Combined with its triple pickup configuration and simple synchronized tremolo, the SA can traverse any musical territory.

NEW MODEL



NTF
(Natural Flat)

PREMIUM

SA1060WZC

- SA Premium 5pc Wenge/Bubinga neck
- Zircote top/Mahogany body
- Bound Rosewood fretboard w/Mother of Pearl off-set dot inlay
- Medium frets w/Premium fret edge treatment
- Graph Tech® Black TUSQ XL® nut
- Seymour Duncan® Vintage Flat/Vintage Flat/JB Model™ pickups
- SynchroniZR tremolo bridge w/ZPS-FX
- Chrome hardware
- Soft case included

FR The new lineup of the FR series emphasizes the instrument's refined simplicity. The Mahogany body balances physical comfort with richness of tone. The FR's radical departure from tradition: The thin Wizard neck, offering a level of fingerboard performance that Ibanez players have raved about for decades.



TRB
(Transparent Red Burst)

SA360QM

- SA 3pc Maple neck
- Quilted Maple top/Mahogany body w/Abalone body binding
- Bound Rosewood fretboard w/Abalone dot inlay
- Jumbo frets
- Quantum/TDB pickups
- True-Duo switch on volume control (push/pull)
- SAT Pro II tremolo bridge
- Chrome hardware



BKF
(Black Flat)

PRESTIGE
Uppercut

FR6UC

MADE IN JAPAN

- Wizard HP 5pc Maple/Walnut neck
- Mahogany body
- Bound Ebony fretboard
- Jumbo frets w/Prestige fret edge treatment
- Bare Knuckle Aftermath pickups
- Tight-End bridge
- Cosmo black hardware
- Gotoh® MG-T locking machineheads
- Factory Tuning: 1D, 2A, 3F, 4C, 5G, 6D
- Hardshell case included



BBT
(Brown Burst)

SA160FM

- SA 3pc Maple neck
- Flamed Maple top/Mahogany body
- Rosewood fretboard w/White dot inlay
- Jumbo frets
- Quantum pickups
- SAT Pro II tremolo bridge
- Chrome hardware



TFB
(Tri Fade Burst)

FR365

- Wizard III Maple neck
- Mahogany body
- Rosewood fretboard w/Mother of Pearl dot inlay
- Jumbo frets
- Core Tone CS/CH pickups
- Fixed bridge
- Gold hardware



TGB
(Transparent Gray Burst)

NEW MODEL



BKF
(Black Flat)

GFR121EX

- GFR Maple neck
- Poplar body
- Rosewood fretboard w/White dot inlay
- Jumbo frets
- Infinity R pickups
- Fixed bridge
- Black hardware

ARZ The 24 fret, two-octave fretboard of the ARZ surpasses the boundaries of traditional single-cutaway guitars. A smooth neck heel provides ease of play, and longer neck scale makes the ARZ ideal for both standard tune shredders and drop-tune demons.



PRESTIGE
Uppercut

ARZ6UC

MADE IN JAPAN

- ARZ 3pc Maple/Mahogany set-in neck (smooth heel)
- 24 frets
- 638mm/25.1" scale
- Maple top/Mahogany body
- Bound Ebony fretboard
- Jumbo frets w/Prestige fret edge treatment
- Graph Tech® nut
- Bare Knuckle Nailbomb pickups
- Tight-Tune bridge/tailpiece
- Cosmo black hardware
- Gotoh® MG-T locking machineheads
- Factory Tuning: 1D, 2A, 3F, 4C, 5G, 6D
- Hardshell case included

BKF
(Black Flat)

NEW MODEL



CRS
(Cherry Sunburst)

ARZ200FM

- ARZ Mahogany set-in neck (smooth heel)
- 24 frets
- 635mm/25" scale
- Flamed Maple top/Mahogany body
- Bound Rosewood fretboard w/White block inlay
- Medium frets
- Classic Elite pickups
- ART-1 bridge/Quik Change III tailpiece
- Chrome hardware

GART

The GART is a classic single cutaway guitar with clean outline and beautiful arch. Light body weight makes for powerful performance mobility.

NEW MODEL



SB
(Sunburst)

GART60FA

- GART Maple neck
- Flamed Maple Art Grain top/Poplar body
- Bound Rosewood fretboard w/White dot inlay
- Medium frets
- Classic Elite pickups
- Full Tune III bridge/tailpiece
- Chrome hardware

GAX

If simplicity is what you're after, the GAX may be your rock weapon of choice. This double-cutaway guitar does away with frills, but it keeps the stuff that matters.



WNS
(Walnut Sunburst)

GAX30

- GAX Maple neck
- Poplar body
- Rosewood fretboard w/White dot inlay
- Medium frets
- Infinity R pickups
- Fixed bridge
- Chrome hardware

AR

The AR is a classic among Ibanez guitars. It was one of the first original designs produced by Ibanez and continues to be a sought after guitar. The AR series continues that legacy with pride.

NEW MODEL



VLS
(Violin Sunburst)

AR725

- AR 3pc Maple set-in neck (smooth heel)
- Maple top/Mahogany body
- Bound Ebony fretboard w/AR725 custom inlay
- Medium frets w/Custom fret edge treatment
- Super 80 "Flying Finger" pickups
- ART-1 bridge/Quik Change III tailpiece
- Gold hardware
- Hardshell case included

NEW MODEL



BK
(Black)

AR620

- AR 3pc Maple set-in neck (smooth heel)
- Mahogany body w/Abalone body binding
- Bound Ebony fretboard w/Tree of Life inlay
- Medium frets w/Custom fret edge treatment
- Super 80 "Flying Finger" pickups
- Tri-Sound switches
- ART-1 bridge/Quik Change Classic tailpiece
- Gold hardware
- Hardshell case included



VLS
(Violin Sunburst)

AR420

- AR 3pc Maple set-in neck (smooth heel)
- Flamed Maple top/Mahogany body w/Abalone body binding
- Bound Rosewood fretboard w/Acrylic & Abalone block inlay
- Medium frets
- Super 58 pickups
- Tri-Sound switches
- ART-1 bridge/Quik Change Classic tailpiece
- Gold hardware



DBS
(Dark Brown Sunburst)

AR325

- AR 3pc Maple set-in neck (smooth heel)
- Figured Bubinga top/Mahogany body
- Bound Rosewood fretboard w/Acrylic & Abalone block inlay
- Medium frets
- Super 58 pickups
- Tri-Sound switches
- ART-1 bridge/Quik Change Classic tailpiece
- Gold hardware

Talman

Classic Tone meets Ibanez Performance - Ibanez has reached back in time to resurrect one of its most requested models of the past two decades. True to the original of the early 90's, today's Talman brings with it a familiar yet fresh sound that places it squarely at the crossroads of modern Ibanez innovation and cherished traditional tone.



TM302 IV

NEW MODEL



Prestige

TFB
(Tri Fade Burst)

TM1702M

MADE IN JAPAN

- Talman Classic-Plus Maple neck
- Alder body
- Maple fretboard w/Black dot inlay
- Medium frets
- Seymour Duncan® Alnico II Pro™ pickups
- IFX-PRO bridge
- Chrome hardware
- Gotoh® MG-T locking machineheads
- Hardshell case included

NEW MODEL



Prestige

VWH
(Vintage White)

TM1730M

MADE IN JAPAN

- Talman Classic-Plus Maple neck
- Alder body
- Maple fretboard w/Black dot inlay
- Medium frets
- Seymour Duncan® Five-Two™ pickups
- IFL-PRO tremolo bridge
- Chrome hardware
- Gotoh® MG-T locking machineheads
- Hardshell case included

NEW MODEL



IV
(Ivory)

TFB
(Tri Fade Burst)

TM302

- Talman Classic-Plus Maple neck
- Alder body
- Rosewood fretboard w/White dot inlay
- Medium frets
- Custom Vintage Single pickups
- IFL10 bridge
- Nickel hardware
- Locking machineheads

NEW MODEL



BLB
(Bright Metallic Blue)

TFB
(Tri Fade Burst)

TM330M

- Talman Classic-Plus Maple neck
- Alder body
- Maple fretboard w/Black dot inlay
- Medium frets
- Custom Single pickups
- IFL10 tremolo bridge
- Nickel hardware
- Locking machineheads

Hollow Body Guitars

AMV10A TCL(L) / ASV10A TCL(R)

Table of Contents

Solid Body Electric Guitars 02-29

Hollow Body Guitars

Signature Models 32-34

Artstar Vintage 34

Artcore Vintage 35

Artstar 36

Artcore Expressionist 37

Artcore 38-39

Electric Basses 40-57

Acoustic Guitars 58-76

Amplifiers/Effects/Accessories 77-97



Signature Models

George Benson



VYS
(Vintage Yellow Sunburst)

LGB300 MADE IN JAPAN

- LGB 3pc Maple set-in neck (22 frets)
- Spruce top/Maple back & sides
- Bound Ebony fretboard w/Acrylic & Abalone block inlay
- Medium frets w/Prestige fret edge treatment
- Flatwound strings
- Bone nut
- Max body thickness: 4 1/4" /Width at lower bout: 16 1/2"
- Super 58 pickups
- Ebony bridge/LGB300 tailpiece
- Gold hardware
- Hardshell case included

George Benson



BS
(Brown Sunburst)

NT
(Natural)

GB10 MADE IN JAPAN

- GB 3pc Maple set-in neck (22 frets)
- Spruce top/Maple back & sides
- Bound Ebony fretboard w/Acrylic & Abalone block inlay
- Medium frets w/Prestige fret edge treatment
- Flatwound strings
- Half-Bone/Half-Brass nut
- Max body thickness: 3 3/8" /Width at lower bout: 14 3/4"
- GB special pickups
- Ebony bridge/GB10 tailpiece
- Gold hardware
- Hardshell case included

George Benson



VYS
(Vintage Yellow Sunburst)

NT
(Natural)
NEW FINISH

LGB30

- LGB30 3pc Mahogany/Maple set-in neck (20 frets)
- Spruce top/Flamed Maple back & sides
- Bound Ebony fretboard w/Acrylic & Abalone block inlay
- Medium frets w/Artstar fret edge treatment
- Flatwound strings
- Bone nut
- Max body thickness: 3 5/8" /Width at lower bout: 15 3/4"
- Super 58 pickups
- ART-1 bridge/LGB30 tailpiece
- Gold hardware
- Hardshell case included

NEW MODEL George Benson



BS
(Brown Sunburst)

GB10SE

- GB 3pc Maple set-in neck (22 frets)
- Spruce top/Maple back & sides
- Bound Ebony fretboard w/Acrylic & Abalone block inlay
- Medium frets w/Artstar fret edge treatment
- Flatwound strings
- Half-Bone/Half-Brass nut
- Max body thickness: 3 5/8" /Width at lower bout: 14 1/2"
- GB special pickups
- Ebony bridge/GB10 tailpiece
- Gold hardware
- Hardshell case included

Eric Krasno (Soulive/Lettuce)



WRD
(Wine Red)

EKM100 MADE IN JAPAN

- EKM Mahogany set-in neck
- Flamed Maple top/back/sides
- Bound Ebony fretboard w/Acrylic & Abalone block inlay
- Jumbo frets w/Prestige fret edge treatment
- Bone nut
- Max body thickness: 2 5/8" /Width at lower bout: 15 3/4"
- DiMarzio® PAF® 36th Anniversary pickups
- Gotoh® 510BN bridge/Gotoh® GE101A tailpiece
- Gold hardware
- Gotoh® MG-T locking machineheads
- String Gauge: .011/.014/.018/.030/.042/.052
- Hardshell case included

Eric Krasno (Soulive/Lettuce)



WRD
(Wine Red)

EKM10T

- EKM 3pc Mahogany/Maple set-in neck
- Flamed Maple top/back/sides
- Bound Ebony fretboard w/Acrylic & Abalone block inlay
- Medium frets w/Artstar fret edge treatment
- Bone nut
- Max body thickness: 2 5/8" /Width at lower bout: 15 3/4"
- Super 58 pickups
- ART-2 Roller bridge/VBS80 vibrato
- Gold hardware
- Hardshell case included

Pat Metheny



NT
(Natural)

PM200 MADE IN JAPAN

- PM Mahogany set-in neck (22 frets)
- Maple top/back/sides
- Bound Ebony fretboard w/Acrylic & Abalone block inlay
- Medium frets w/Prestige fret edge treatment
- Flatwound strings
- Bone nut
- Max body thickness: 4 1/4" /Width at lower bout: 16 1/2"
- Silent 58 pickup
- Gotoh® GE103B bridge/PM tailpiece
- Gold hardware
- Hardshell case included

Pat Metheny



AA
(Antique Amber)

PM2

- PM 3pc Mahogany/Maple set-in neck (22 frets)
- Maple top/back/sides
- Bound Ebony fretboard w/Acrylic & Abalone block inlay
- Medium frets w/Artstar fret edge treatment
- Flatwound strings
- Bone nut
- Max body thickness: 3 5/8" /Width at lower bout: 15 3/4"
- Super 58 pickup
- ART-1 bridge/KT30 tailpiece
- Gold hardware
- Hardshell case included

John Scofield



VT
(Vintage Sunburst)

JSM100

MADE IN JAPAN

- JSM Mahogany set-in neck
- Flamed Maple top/back/sides
- Bound Ebony fretboard w/Acrylic & Abalone block inlay
- Jumbo frets w/Prestige fret edge treatment
- Half-Bone/Half-Brass nut
- Max body thickness: 2 5/8" /Width at lower bout: 15 3/4"
- Super 58 pickups
- Gotoh® 510BN bridge/Gotoh® GE101A tailpiece
- Gold hardware
- String Gauge: .013/.016/.022/.032/.042/.052
- Hardshell case included

John Scofield



VYS
(Vintage Yellow Sunburst)

JSM10

- JSM 3pc Mahogany/Maple set-in neck
- Flamed Maple top/back/sides
- Bound Ebony fretboard w/Acrylic & Abalone block inlay
- Medium frets w/Artstar fret edge treatment
- Bone nut
- Max body thickness: 2 5/8" /Width at lower bout: 15 3/4"
- Super 58 pickups
- Tri-Sound switch for neck pickup
- ART-1 bridge/Quik Change III tailpiece
- Gold hardware
- Hardshell case included

Artstar Vintage

There's something irresistible about a vintage guitar—well worn with battle scars, earned throughout years of hard use. Like a favorite old leather jacket, it immediately *feels* familiar. Now, Ibanez proudly offers Artstar Vintage—the alternative to pricey vintage instruments. The Artstar Vintage “aging” process applies to hardware and other appointments, as well as the body, giving each guitar a convincingly real, worn appearance.

NEW MODEL



YSL
(Yellow Sunburst Low Gloss)

ASV100FMD

- Artstar 3pc Mahogany/Maple set-in neck
- Flamed Maple top/back/sides
- Bound Ebony fretboard w/Acrylic & Abalone block inlay
- Medium frets w/Artstar fret edge treatment
- Bone nut
- Max body thickness: 2 5/8" /Width at lower bout: 15 3/4"
- Super 58 pickups
- Tri-Sound switch for neck pickup
- ART-1 bridge/Quik Change III tailpiece
- Antique Chrome hardware
- Hardshell case included

Artcore Vintage

With vintage guitars as popular as they've become, their cost has skyrocketed in recent years. Even relic'd new guitars are often outrageously over-priced. Now, Ibanez proudly offers Artcore Vintage—the alternative to pricey vintage instruments. The Artcore Vintage “aging” process applies to hardware and other appointments, as well as the body, giving each guitar a convincingly real, worn appearance.

NEW MODEL



TCL
(Tobacco Burst Low Gloss)

ASV10A

- Artcore Mahogany set-in neck
- Maple top/back/sides
- Bound Rosewood fretboard w/Aged white block inlay
- Medium frets
- Max body thickness: 2 5/8" /Width at lower bout: 15 3/4"
- Classic Elite pickups
- ART-1 bridge/Quik Change III tailpiece
- Antique Chrome hardware

NEW MODEL



TCL
(Tobacco Burst Low Gloss)

AMV10A

- Artcore Mahogany set-in neck
- Maple top/back/sides
- Bound Rosewood fretboard w/Aged white block inlay
- Medium frets
- Max body thickness: 2 5/8" /Width at lower bout: 14 1/2"
- Classic Elite pickups
- ART-1 bridge/Quik Change III tailpiece
- Antique Chrome hardware

AMV10A TCL

Artstar The parallel histories of Jazz music and hollow-body electric guitars have been manifested in the Artstar. The influences of these legendary instruments are immediately apparent with bone nut, ebony fretboard, and Ibanez's signature Super 58 pickups. The critical eye will appreciate the details like the smoothness of the fretboard and a skilled crimping technique generally found on instruments costing twice as much. The Artstar is a pure jazz-box that embodies the continual innovation that is Jazz.



DVS
(Dark Violin Sunburst)

SJ300

- Artstar 5pc Maple/Walnut set-in neck (20 frets)
- Solid Spruce top/Flamed Maple back & sides
- Bound Ebony fretboard w/Acrylic & Abalone block inlay
- Medium frets w/Artstar fret edge treatment
- Flatwound strings
- Bone nut
- Max body thickness: 4 1/3" /Width at lower bout: 16 1/2"
- Super 58 pickups
- ART-W bridge/VT06S tailpiece
- Gold hardware
- Hardshell case included



DVS
(Dark Violin Sunburst)

SS300

- Artstar 5pc Maple/Walnut set-in neck (20 frets)
- Solid Spruce top/Flamed Maple back & sides
- Bound Ebony fretboard w/Acrylic & Abalone block inlay
- Medium frets w/Artstar fret edge treatment
- Flatwound strings
- Bone nut
- Max body thickness: 4 1/3" /Width at lower bout: 15"
- Super 58 pickups
- ART-W bridge/VT06S tailpiece
- Gold hardware
- Hardshell case included



AWB
(Aged Whiskey Burst)

AF155

- Artstar 3pc Mahogany/Maple set-in neck (20 frets)
- Flamed Maple top/back/sides
- Bound Ebony fretboard w/Acrylic & Abalone block inlay
- Medium frets w/Artstar fret edge treatment
- Flatwound strings
- Bone nut
- Max body thickness: 3 5/8" /Width at lower bout: 15 3/4"
- Super 58 pickups
- ART-W bridge/VT06S tailpiece
- Gold hardware
- Hardshell case included



AYS
(Antique Yellow Sunburst)

AS153

- Artstar 3pc Mahogany/Maple set-in neck
- Flamed Maple top/back/sides
- Bound Ebony fretboard w/Acrylic & Abalone block inlay
- Medium frets w/Artstar fret edge treatment
- Bone nut
- Max body thickness: 2 5/8" /Width at lower bout: 15 3/4"
- Super 58 pickups
- Tri-Sound switch for neck pickup
- ART-1 bridge/Quik Change III tailpiece
- Gold hardware
- Hardshell case included

Artcore Expressionist

For a decade now, Ibanez has continued to energize the hollow-body segment with wide range of designs—with everything from rockin' hybrids to straight-up jazz-boxes. The new Expressionist line begins yet another chapter in the Artcore story. The Expressionist difference? Jazz fans will recognize the Ibanez original Super 58 pickups—the preferred pickup of George Benson, Pat Metheny, and John Scofield on their own Signature models. A jazz favorite, yes, but as funk guitarist Eric Krasno has been proving, the Super 58s perform well in a variety of situations. Warm, balanced articulation, and excellent response characterize the Super 58 pickups.



VSB
(Vintage Sunburst)

AFJ95

- Expressionist 3pc Mahogany/Maple set-in neck (20 frets)
- Spruce top/Flamed Maple back & sides
- Bound Rosewood fretboard w/Acrylic block inlay
- Medium frets
- Flatwound strings
- Max body thickness: 3 5/8" /Width at lower bout: 15 3/4"
- Super 58 pickups
- ART-W bridge/VT06 tailpiece
- Gold hardware



VYS
(Vintage Yellow Sunburst)

AKJ95

- Expressionist 3pc Mahogany/Maple set-in neck (20 frets)
- Flamed Maple top/back/sides
- Bound Rosewood fretboard w/Acrylic block inlay
- Medium frets
- Flatwound strings
- Max body thickness: 3 5/8" /Width at lower bout: 15 3/4"
- Super 58 pickups
- ART-W bridge/VT06 tailpiece
- Chrome hardware



VLS
(Violin Sunburst)

AS93

- Expressionist 3pc Mahogany/Maple set-in neck
- Flamed Maple top/back/sides
- Bound Rosewood fretboard w/Acrylic block inlay
- Medium frets
- Max body thickness: 2 5/8" /Width at lower bout: 15 3/4"
- Super 58 pickups
- ART-1 bridge/Quik Change III tailpiece
- Gold hardware



AYS
(Antique Yellow Sunburst)

AM93

- Expressionist 3pc Mahogany/Maple set-in neck
- Quilted Maple top/back/sides
- Bound Rosewood fretboard w/Acrylic block inlay
- Medium frets
- Max body thickness: 2 5/8" /Width at lower bout: 14 1/2"
- Super 58 pickups
- ART-1 bridge/Quik Change III tailpiece
- Gold hardware



DBS
(Dark Brown Sunburst)

AG95

- Expressionist 3pc Mahogany/Maple set-in neck (22 frets)
- Figured Bubinga top/back/sides
- Bound Rosewood fretboard w/Acrylic block inlay
- Medium frets
- Max body thickness: 3 5/8" /Width at lower bout: 14 1/2"
- Super 58 pickups
- ART-1 bridge/VT06 tailpiece
- Gold hardware

Artcore

Ibanez introduced Artcore in 2002 and has been the hollow-body guitar of choice for musicians for the last 10 years. The Artcore's combination of quality workmanship and affordability has created legions of fans from diverse genres as blues, country, rock and jazz. Musicians can find the purity of an old school style jazz-box to a hybrid semi-hollow rocker. Artcore is highly respected for its tone, sustain and the way they hold their tuning and how the series continues to push the boundaries of guitar building.



IV
(Ivory)

AF75TDG

- Artcore Mahogany set-in neck (20 frets)
- Maple top/back/sides
- Bound Rosewood fretboard w/Acrylic block inlay
- Medium frets
- Max body thickness: 3 5/8" /Width at lower bout: 15 3/4"
- Classic Elite pickups
- ART-2 Roller bridge/VBF70 vibrato
- Gold hardware



BS
(Brown Sunburst)

AF75

- Artcore Mahogany set-in neck (20 frets)
- Maple top/back/sides
- Bound Rosewood fretboard w/Acrylic block inlay
- Medium frets
- Max body thickness: 3 5/8" /Width at lower bout: 15 3/4"
- Classic Elite pickups
- ART-1 bridge/VT60 tailpiece
- Chrome hardware



TF
(Tobacco Flat)

AF55

- Artcore Mahogany set-in neck (20 frets)
- Maple top/back/sides
- Bound Rosewood fretboard w/White dot inlay
- Medium frets
- Max body thickness: 3 5/8" /Width at lower bout: 15 3/4"
- Infinity R pickups
- ART-ST bridge/VT06 tailpiece
- Chrome hardware



TRS
(Transparent Red Sunburst)
NEW FINISH

AFS75T

- Artcore Mahogany set-in neck (22 frets)
- Maple top/back/sides
- Bound Rosewood fretboard w/Acrylic block inlay
- Medium frets
- Max body thickness: 2 5/8" /Width at lower bout: 15 3/4"
- Classic Elite pickups
- ART-2 Roller bridge/VBF70 vibrato
- Chrome hardware



BS
(Brown Sunburst)

AG75

- Artcore Mahogany set-in neck (22 frets)
- Maple top/back/sides
- Bound Rosewood fretboard w/Acrylic block inlay
- Medium frets
- Max body thickness: 3 5/8" /Width at lower bout: 14 1/2"
- Classic Elite pickups
- ART-1 bridge/VT60 tailpiece
- Chrome hardware



TCR
(Transparent Cherry)

AS73

- Artcore Mahogany set-in neck
- Maple top/back/sides
- Bound Rosewood fretboard w/White dot inlay
- Medium frets
- Max body thickness: 2 5/8" /Width at lower bout: 15 3/4"
- Classic Elite pickups
- ART-1 bridge/Quik Change III tailpiece
- Chrome hardware

NEW MODEL



NT
(Natural)

AS73G

- Artcore Mahogany set-in neck
- Maple top/back/sides
- Bound Rosewood fretboard w/Acrylic block inlay
- Medium frets
- Max body thickness: 2 5/8" /Width at lower bout: 15 3/4"
- Classic Elite pickups
- ART-1 bridge/Quik Change III tailpiece
- Gold hardware



TKF
(Transparent Black Flat)

AS53

- Artcore Mahogany set-in neck
- Sapele top/back/sides
- Bound Rosewood fretboard w/White dot inlay
- Medium frets
- Max body thickness: 2 5/8" /Width at lower bout: 15 3/4"
- Infinity R pickups
- ART-ST bridge/ART-ST tailpiece
- Chrome hardware



TBC
(Tobacco Brown)

AMF73T

- Artcore Mahogany set-in neck
- Maple top/back/sides
- Rosewood fretboard w/White dot inlay
- Medium frets
- Max body thickness: 1 5/8" /Width at lower bout: 14 1/2"
- Classic Elite Retro pickups
- ART-2 Roller bridge/VBX60 vibrato
- Chrome hardware



Electric Basses

SR300E-MG (L) / SR300E IPT (C) / SR305E RBM(R)

Table of Contents

Solid Body Electric Guitars	02-29
Hollow Body Guitars	30-39
Electric Basses	
Signature Models	42-44
Ibanez Bass Workshop	45-48
SR	48-52
GSR	53-55
Talman Bass	55
BTB	56
ATK	57
Artcore Vintage	57
Acoustic Guitars	58-76
Amplifiers/Effects/Accessories	77-97

Signature Models

Sharlee D'Angelo (Arch Enemy)



PW
(Pearl White)

SDB3

- SDB 5pc Maple/Bubinga neck
- Mahogany body
- Bound Rosewood fretboard w/Acrylic iron cross inlay
- Medium frets
- PFR pickups
- Ibanez Custom Electronics 2-band eq
- Mono-rail IV bridge
- Cosmo black hardware
- Factory tuning: 1D#, 2A#, 3F, 4C
- String Gauge: .060/.080/.100/.120
- Hardshell case included

NEW MODEL Mike D'Antonio (Killswitch Engage)



WH
(White)

MDB4

- MDB 3pc Maple neck
- Mahogany body
- Rosewood fretboard w/MDB special inlay
- Medium frets
- Seymour Duncan® SPB-1/SJB-2 pickups
- Accu-cast B200 bridge
- Cosmo black hardware
- Factory Tuning : 1F, 2C, 3G, 4C
- String Gauge: .055/.075/.095/.120
- Hardshell case included

Fieldy (Korn) 5-STRING



BKF
(Black Flat)

K5

- K5 5pc Maple/Bubinga neck
- Mahogany body
- Rosewood fretboard w/K5 special inlay
- Medium frets
- IBZ ADX5 pickups
- Vari-mid 3-band eq
- EB-7 bridge
- Black hardware

Peter Iwers (In Flames) 5-STRING



AM
(Amber)

PIB3

- PIB 5pc Maple/Rosewood neck
- Mahogany body
- Rosewood fretboard w/PIB special inlay
- Medium frets
- CAP EXF-N2 pickups
- EQB-IIID 3-band eq
- Mono-rail IV bridge
- Cosmo black hardware
- Factory tuning: 1D#, 2A#, 3F, 4C, 5A#
- String Gauge: .045/.065/.085/.105/.120

Adam Nitti 6-STRING



ANB1006

MADE IN JAPAN

- ANB 5pc Maple/Purpleheart neck-through
- Figured Maple top/Swamp Ash wing body
- Purpleheart fretboard w/Abalone oval inlay
- Medium frets w/Prestige fret edge treatment
- Bartolini® xxM56C pickups
- Bartolini® NTMB+F ANB Custom Electronics 3-band eq w/Mid frequency switch
- Hipshot A style bridge (18mm string spacing)
- Black hardware
- Hardshell case included

NEW MODEL Adam Nitti 6-STRING

PREMIUM



ANB306

- ANB 5pc Maple/Purpleheart neck-through
- Quilted Maple top/Ash wing body
- Purpleheart fretboard w/Abalone oval inlay
- Medium frets w/Premium fret edge treatment
- Bartolini® xxM56C pickups
- Bartolini® NTMB+F ANB Custom Electronics 3-band eq w/Mid frequency switch
- Hipshot A style bridge (18mm string spacing)
- Black hardware
- Soft case included

Gerald Veasley 6-STRING



AM
(Amber)

GVB1006

MADE IN JAPAN

- GVB 3pc Maple/Wenge neck
- Figured Maple top/Alder body
- Rosewood fretboard w/Abalone oval inlay
- Medium frets w/Prestige fret edge treatment
- Bartolini® P45C pickups
- Aguilar® OBP-3 preamp w/Mid frequency selector (push/pull)
- Mono-rail IV bridge (14mm string spacing)
- Cosmo black hardware
- String Gauge: .030/.040/.060/.080/.100/.120
- Hardshell case included

Gerald Veasley 6-STRING



GVB36

- GVB 3pc Maple neck
- Flamed Maple top/Alder body
- Rosewood fretboard w/Abalone oval inlay
- Medium frets
- Bartolini® MK-1 pickups
- EQB-IIISP 3-band eq w/Mid frequency selector (push/pull)
- Mono-rail IV bridge (14mm string spacing)
- Cosmo black hardware
- String Gauge: .032/.040/.060/.080/.100/.125

Gary Willis 5-STRING Fretless



NTF
(Natural Flat)

GWB1005

MADE IN JAPAN

- GWB 3pc Maple neck
- Swamp Ash body
- High gloss finished Rosewood fingerboard w/Off-set white dot inlay
- Fretless
- Bartolini® GWB pickup
- Bartolini® NTBT 2-band eq w/Eq bypass switch (push/pull)
- Std. bridge
- Black hardware
- Hardshell case included

NEW MODEL Gary Willis 5-STRING Fretless

PREMIUM



NTF
(Natural Flat)

GWB205

- GWB 3pc Maple neck
- Ash body
- Ebony fingerboard w/Off-set white dot inlay
- Fretless
- Bartolini® GWB pickup
- Bartolini® NTBT 2-band eq w/Eq bypass switch (push/pull)
- Std. bridge
- Black hardware
- Soft case included

Gary Willis 5-STRING Fretless



BKF
(Black Flat)

GWB35

- GWB 3pc Maple neck
- Basswood body
- Ebony fingerboard w/Off-set white dot inlay
- Fretless
- SFR-GWB pickup
- EQB-GWII 2-band eq
- Std. bridge
- Black hardware



SRSC805 NTF

Ibanez Bass Workshop

For more than 40 years, Ibanez has pioneered new frontiers in bass development, pushing the boundaries of conventional designs to bass players of all styles and aptitude new ways of expressing themselves. This spirit of exploration has led to the creation of some of the most successful and popular production basses of all time. It is this same drive to bring new and relevant ideas to the forefront that serves as the basis for an ongoing exploratory project, appropriately dubbed the Ibanez Bass Workshop. The impetus behind each one of these unique instruments comes from a personal desire by one or more members of the Ibanez bass development group to satisfy the particular needs of a very particular player. These inventions may not be for everyone, but for those who yearn to explore new sonic vistas through the medium of bass: The Ibanez Bass Workshop project may give you just what you're looking for.

NEW MODEL 5-STRING



NTF
(Natural Flat)

SRSC805

- SRSC5 5pc Maple/Purpleheart neck-through
- Poplar Burl top/Mahogany wing body
- Purpleheart fretboard w/Avalon Oval inlay
- Medium frets
- Bartolini® MK-1 pickups
- Ibanez Custom Electronics 3-band eq w/Eq bypass switch (passive tone control on treble pot) & Mid frequency switch
- Mono-rail V bridge (18mm string spacing)
- Black matte hardware

5-STRING Multi Scale



BKS
(Black Stained)

SRFF805

- SRFF5 for Multi Scale 5pc Jatoba/Bubinga neck
- 901.7mm/35.5" scale at 5th string, 864.0mm/34.0" scale at 1st string
- Ash body
- Rosewood fretboard
- Medium frets
- Bartolini® BH1 pickups
- Ibanez Custom Electronics 3-band eq w/Eq bypass switch (passive tone control on treble pot) & Mid frequency switch
- Mono-rail V bridge
- Cosmo black hardware
- String Gauge: .045/.065/.085/.105/.130

6-STRING Multi Scale



BKS
(Black Stained)

SRFF806

- SRFF6 for Multi Scale 5pc Jatoba/Bubinga neck
- 901.7mm/35.5" scale at 6th string, 854.7mm/33.6" scale at 1st string
- Ash body
- Rosewood fretboard
- Medium frets
- Bartolini® BH1 pickups
- Ibanez Custom Electronics 3-band eq w/Eq bypass switch (passive tone control on treble pot) & Mid frequency switch
- Mono-rail V bridge
- Cosmo black hardware
- String Gauge: .032/.045/.065/.085/.105/.130

Fretless



BBF
(Brown Burst Flat)

SRF700

- SRF4 5pc Maple/Bubinga neck-through
- Mahogany wing body
- Rosewood fretboard
- Fretless
- Bartolini® MK-1 pickups
- Ibanez 2-band eq
- AeroSilk Piezo system w/Active tone control
- Custom bridge for AeroSilk Piezo system
- Cosmo black hardware
- String Gauge: .045/.065/.080/.100 (Flat wound)

5-STRING Fretless



BBF
(Brown Burst Flat)

SRF705

- SRF5 5pc Maple/Bubinga neck-through
- Mahogany wing body
- Rosewood fretboard
- Fretless
- Bartolini® MK-1 pickups
- Ibanez 2-band eq
- AeroSilk Piezo system w/Active tone control
- Custom bridge for AeroSilk Piezo system
- Cosmo black hardware
- String Gauge: .045/.065/.080/.100/.132 (Flat wound)

6-STRING



WNF
(Walnut Flat)

SRC6

- SRC 5pc Jatoba/Bubinga neck
- 762mm/30" scale
- Mahogany body
- Rosewood fretboard w/Abalone oval inlay
- Medium frets
- EMG® 35HZ pickups
- Ibanez Custom Electronics 3-band eq
- Tight-End bridge (10.8mm string spacing)
- Cosmo black hardware
- Factory tuning; 1E,2B,3G,4D,5A,6E
- String Gauge: .024/.034/.044/.056/.072/.084

5-STRING



NTF
(Natural Flat)

BTB685SC

- BTB5 5pc Maple/Bubinga neck-through
- 889mm/35" scale
- Rosewood top/Ash wing body
- Rosewood fretboard w/Abalone dot inlay
- Medium frets
- Graph Tech® BLACK TUSQ XL® nut
- Bartolini® BH1 pickups
- EQB-IIIS 3-band eq w/Mid frequency switch
- Mono-rail II bridge
- Cosmo black hardware

6-STRING



NTF
(Natural Flat)

BTB686SC

- BTB6 5pc Maple/Bubinga neck-through
- 889mm/35" scale
- Rosewood top/Ash wing body
- Rosewood fretboard w/Abalone dot inlay
- Medium frets
- Graph Tech® BLACK TUSQ XL® nut
- Bartolini® BH1 pickups
- EQB-IIIS 3-band eq w/Mid frequency switch
- Mono-rail II bridge
- Cosmo black hardware



BTB33 NTF(T) / SRFF806 BKS (B)

7-STRING



NTF
(Natural Flat)

BTB7

- BTB7 9pc Maple/Rosewood/Walnut neck-through w/Graphite reinforcement rods
- 889mm/35" scale
- Rosewood top/Maple wing body
- Rosewood fretboard w/Abalone dot inlay
- Medium frets
- CAP Sonic Arch pickups
- E6 3-band eq w/eq bypass switch
- Mono-rail IV bridge (15.5mm string spacing)
- Cosmo black hardware
- Factory tuning: 1F,2C,3G,4D,5A,6E,7B
- String Gauge:.020p/.032/.045/.065/.080/.100/.130

5-STRING



NTF
(Natural Flat)

BTB33

- BTB5 5pc Maple/Bubinga neck-through
- 838mm/33" scale
- Ash top/Mahogany wing body
- Rosewood fretboard w/Abalone dot inlay
- Medium frets
- Graph Tech® BLACK TUSQ XL® nut
- Bartolini® BH1 pickups
- Ibanez Custom Electronics 3-band eq w/Mid frequency switch
- Mono-rail V bridge
- Black matte hardware
- Factory tuning: 1C,2G,3D,4A,5E
- String Gauge:.032/.045/.065/.085/.105

SR

For 25 years the SR has given bass players a modern alternative. With its continued popularity, Ibanez is constantly endeavoring to answer the wider needs of a variety of players, at a variety of budgets. But no matter what the specs, the heart is the same-SR continues to excite with its smooth, fast neck, lightweight body, and perfectly matched electronics.



Prestige

OL
(Oil)

SR5000

MADE IN JAPAN

- Atlas-4 HP 5pc Wenge/Bubinga neck w/KTS™ TITANIUM rods
- Wenge top/Mahogany/Wenge back body
- Wenge fretboard w/Mother of Pearl & Abalone oval inlay
- Medium frets w/Prestige fret edge treatment
- Graph Tech® BLACK TUSQ XL® nut
- Bartolini® Custom pickups
- Ibanez Custom Electronics 3-band eq w/eq bypass switch (passive tone control on treble pot) & Mid frequency switch
- Mono-rail V bridge
- Gold hardware
- Hardshell case included

5-STRING



Prestige

OL
(Oil)

SR5005

MADE IN JAPAN

- Atlas-5 HP 5pc Wenge/Bubinga neck w/KTS™ TITANIUM rods
- Wenge top/Mahogany/Wenge back body
- Wenge fretboard w/Mother of Pearl & Abalone oval inlay
- Medium frets w/Prestige fret edge treatment
- Graph Tech® BLACK TUSQ XL® nut
- Bartolini® Custom pickups
- Ibanez Custom Electronics 3-band eq w/eq bypass switch (passive tone control on treble pot) & Mid frequency switch
- Mono-rail V bridge
- Gold hardware
- Hardshell case included



SR1305 NTF

6-STRING



Prestige

OL
(Oil)

SR5006

MADE IN JAPAN

- Atlas-6 HP 5pc Wenge/Bubinga neck w/KTS™ TITANIUM rods
- Wenge top/Mahogany/Wenge back body
- Wenge fretboard w/Mother of Pearl & Abalone oval inlay
- Medium frets w/Prestige fret edge treatment
- Graph Tech® BLACK TUSQ XL® nut
- Bartolini® Custom pickups
- Ibanez Custom Electronics 3-band eq w/eq bypass switch (passive tone control on treble pot) & Mid frequency switch
- Mono-rail V bridge
- Gold hardware
- Hardshell case included



PREMIUM

NTF
(Natural Flat)

SR1800

- Atlas-4 5pc Wenge/Bubinga neck w/KTS™ TITANIUM rods
- Rosewood & Flamed Maple top/Walnut/Mahogany back body
- Rosewood fretboard w/Abalone oval inlay
- Medium frets w/Premium fret edge treatment
- Graph Tech® BLACK TUSQ XL® nut
- Nordstrand™ "Big Single" pickups
- Ibanez Custom Electronics 3-band eq w/eq bypass switch (passive tone control on treble pot) & Mid frequency switch
- Mono-rail V bridge
- Gold hardware
- Soft case included

5-STRING



PREMIUM

NTF
(Natural Flat)

SR1805

- Atlas-5 5pc Wenge/Bubinga neck w/KTS™ TITANIUM rods
- Rosewood & Flamed Maple top/Walnut/Mahogany back body
- Rosewood fretboard w/Abalone oval inlay
- Medium frets w/Premium fret edge treatment
- Graph Tech® BLACK TUSQ XL® nut
- Nordstrand™ "Big Single" pickups
- Ibanez Custom Electronics 3-band eq w/eq bypass switch (passive tone control on treble pot) & Mid frequency switch
- Mono-rail V bridge
- Gold hardware
- Soft case included

NEW MODEL



PREMIUM

NTF
(Natural Flat)

SR1300

- Atlas-4 5pc Wenge/Bubinga neck w/KTS™ TITANIUM rods
- Ash/Walnut top/Mahogany body
- Rosewood fretboard w/Abalone oval inlay
- Medium frets w/Premium fret edge treatment
- Graph Tech® BLACK TUSQ XL® nut
- Nordstrand™ "Big Single" pickups
- Ibanez Custom Electronics 3-band eq w/eq bypass switch (passive tone control on treble pot) & Mid frequency switch
- Mono-rail V bridge
- Gold hardware
- Soft case included

NEW MODEL 5-STRING

PREMIUM

SR1305

NTF
(Natural Flat)

- Atlas-5 5pc Wenge/Bubinga neck w/KTS™ TITANIUM rods
- Ash/Walnut top/Mahogany body
- Rosewood fretboard w/Abalone oval inlay
- Medium frets w/Premium fret edge treatment
- Graph Tech® BLACK TUSQ XL® nut
- Nordstrand™ "Big Single" pickups
- Ibanez Custom Electronics 3-band eq w/Eq bypass switch (passive tone control on treble pot) & Mid frequency switch
- Mono-rail V bridge
- Gold hardware
- Soft case included

NEW MODEL 6-STRING

PREMIUM

SR1306

NTF
(Natural Flat)

- Atlas-6 5pc Wenge/Bubinga neck w/KTS™ TITANIUM rods
- Ash/Walnut top/Mahogany body
- Rosewood fretboard w/Abalone oval inlay
- Medium frets w/Premium fret edge treatment
- Graph Tech® BLACK TUSQ XL® nut
- Nordstrand™ "Big Single" pickups
- Ibanez Custom Electronics 3-band eq w/Eq bypass switch (passive tone control on treble pot) & Mid frequency switch
- Mono-rail V bridge
- Gold hardware
- Soft case included

NTF
(Natural Flat)

SR750

- SR4 5pc Jatoba/Bubinga neck
- Bubinga top/Maple body
- Rosewood fretboard w/Abalone oval inlay
- Medium frets
- Nordstrand™ CND P/J pickups
- Ibanez Custom Electronics 3-band eq w/Eq bypass switch (passive tone control on treble pot)
- Accu-cast B300 bridge
- Black matte hardware

5-STRING

NTF
(Natural Flat)

SR755

- SR5 5pc Jatoba/Bubinga neck
- Bubinga top/Maple body
- Rosewood fretboard w/Abalone oval inlay
- Medium frets
- Nordstrand™ CND P/J pickups
- Ibanez Custom Electronics 3-band eq w/Eq bypass switch (passive tone control on treble pot)
- Accu-cast B305 bridge
- Black matte hardware

6-STRING

NTF
(Natural Flat)

SR756

- SR6 5pc Jatoba/Bubinga neck
- Bubinga top/Maple body
- Rosewood fretboard w/Abalone oval inlay
- Medium frets
- Nordstrand™ CND P/J pickups
- Ibanez Custom Electronics 3-band eq w/Eq bypass switch (passive tone control on treble pot)
- Accu-cast B306 bridge
- Black matte hardware

NTF
(Natural Flat)

SR600

- SR4 5pc Jatoba/Bubinga neck
- Ash body
- Rosewood fretboard w/Abalone oval inlay
- Medium frets
- Bartolini® MK-1 pickups
- Ibanez Custom Electronics 3-band eq w/Mid frequency switch
- Accu-cast B300 bridge
- Black matte hardware

5-STRING

NTF
(Natural Flat)

SR605

- SR5 5pc Jatoba/Bubinga neck
- Ash body
- Rosewood fretboard w/Abalone oval inlay
- Medium frets
- Bartolini® MK-1 pickups
- Ibanez Custom Electronics 3-band eq w/Mid frequency switch
- Accu-cast B305 bridge
- Black matte hardware

BM
(Brown Mahogany)

SR500

- SR4 5pc Jatoba/Bubinga neck
- Mahogany body
- Rosewood fretboard w/Abalone oval inlay
- Medium frets
- Bartolini® MK-1 pickups
- Ibanez Custom Electronics 3-band eq w/Mid frequency switch
- Accu-cast B300 bridge
- Cosmo black hardware

5-STRING

BM
(Brown Mahogany)

SR505

- SR5 5pc Jatoba/Bubinga neck
- Mahogany body
- Rosewood fretboard w/Abalone oval inlay
- Medium frets
- Bartolini® MK-1 pickups
- Ibanez Custom Electronics 3-band eq w/Mid frequency switch
- Accu-cast B305 bridge
- Cosmo black hardware

6-STRING

BM
(Brown Mahogany)

SR506

- SR6 5pc Jatoba/Bubinga neck
- Mahogany body
- Rosewood fretboard w/Abalone oval inlay
- Medium frets
- Bartolini® MK-1 pickups
- Ibanez Custom Electronics 3-band eq w/Mid frequency switch
- Accu-cast B306 bridge
- Cosmo black hardware

NEW MODEL



SMB
(Seashore Metallic Burst)



IPT
(Iron Pewter)



MG
(Metallic Gray)



PW
(Pearl White)

SR300E

- SR4 5pc Maple/Rosewood neck
- Mahogany body
- Rosewood fretboard w/White dot inlay
- Medium frets
- PowerSpan Dual Coil pickups
- Ibanez Custom Electronics 3-band eq w/3 way Power Tap switch
- Accu-cast B120 bridge
- Cosmo black hardware

NEW MODEL Left-handed



IPT
(Iron Pewter)

SR300EL

- SR4 5pc Maple/Rosewood neck
- Mahogany body
- Rosewood fretboard w/White dot inlay
- Medium frets
- PowerSpan Dual Coil pickups
- Ibanez Custom Electronics 3-band eq w/3 way Power Tap switch
- Accu-cast B120 bridge
- Cosmo black hardware

NEW MODEL 5-STRING



IPT
(Iron Pewter)



RBM
(Root Beer Metallic)

SR305E

- SR5 5pc Maple/Rosewood neck
- Mahogany body
- Rosewood fretboard w/White dot inlay
- Medium frets
- PowerSpan Dual Coil pickups
- Ibanez Custom Electronics 3-band eq w/3 way Power Tap switch
- Accu-cast B125 bridge
- Cosmo black hardware

GSR

GSRs offer the famous Soundgear sleekness, comfort, tone, and playability. Not only do GSR Soundgears look and play better than everything else in their price range, but their rigorous inspection and set-up is the same as Ibanez's more expensive models.

NEW MODEL



WNF
(Walnut Flat)

GSR250B

- GSR4 Maple neck
- Mahogany body
- Rosewood fretboard w/White dot inlay
- Medium frets
- Std. pickups
- EQB-IIID 3-band eq
- B10 bridge
- Black hardware

NEW MODEL 5-STRING



WNF
(Walnut Flat)

GSR255B

- GSR5 Maple neck
- Mahogany body
- Rosewood fretboard w/White dot inlay
- Medium frets
- Std. pickups
- EQB-IIID 3-band eq
- B15 bridge
- Black hardware

NEW MODEL 6-STRING



WNF
(Walnut Flat)

GSR256B

- GSR6 Maple neck
- Mahogany body
- Rosewood fretboard w/White dot inlay
- Medium frets
- Std. pickups
- EQB-IIID 3-band eq
- B16 bridge
- Black hardware

NEW MODEL



NGT
(Natural Gray Burst)

GSR200SM

- GSR4 Maple neck
- Spalted Maple top/Poplar body
- Rosewood fretboard w/White dot inlay
- Medium frets
- Std. P/J pickups
- Phat II eq
- B10 bridge
- Black hardware

NEW MODEL 5-STRING



NGT
(Natural Gray Burst)

GSR205SM

- GSR5 Maple neck
- Spalted Maple top/Poplar body
- Rosewood fretboard w/White dot inlay
- Medium frets
- Std. pickups
- Phat II eq
- B15 bridge
- Black hardware



BK
(Black)

GSR200

- GSR4 Maple neck
- Poplar body
- Rosewood fretboard w/White dot inlay
- Medium frets
- Std. P/J pickups
- Phat II eq
- B10 bridge
- Chrome hardware



TR
(Transparent Red)

Left-handed



BK
(Black)

GSR200L

- GSR4 Maple neck
- Poplar body
- Rosewood fretboard w/White dot inlay
- Medium frets
- Std. P/J pickups
- Phat II eq
- B10 bridge
- Chrome hardware

5-STRING



BK
(Black)

GSR205

- GSR5 Maple neck
- Poplar body
- Rosewood fretboard w/White dot inlay
- Medium frets
- Std. pickups
- Phat II eq
- B15 bridge
- Chrome hardware



TR
(Transparent Red)



BK
(Black)



CA
(Candy Apple)



PW
(Pearl White)

GSR320

- GSR4 Maple neck
- Poplar body
- Rosewood fretboard w/White dot inlay
- Medium frets
- Std. J pickups
- B10 bridge
- Black hardware

Talman Bass

The new Talman bass series combines the re-emergence of a historic Ibanez body shape with powerful genre-hopping versatility. TMB electronic system paves the road to a variety of classic tones.



BK
(Black)

TMB100

- TMB4 Maple neck
- Mahogany body
- Rosewood fretboard w/White dot inlay
- Medium frets
- Dynamix P/J pickups
- Ibanez Custom Electronics 2-band eq
- Std. bridge
- Chrome hardware



TFB
(Tri Fade Burst)

NEW MODEL



BK
(Black)

TMB30

- TMB4 Maple neck
- 762mm/30" scale
- Mahogany body
- Rosewood fretboard w/White dot inlay
- Medium frets
- Dynamix P/J pickups
- Std. bridge
- Chrome hardware

BTB Without a doubt, your instrument should equal the quality of your effort. At some point the word “boutique” comes to mind: Select-grade materials, neck-through construction, and top quality components, all in a meticulously crafted instrument. But what about the price? That’s where Ibanez comes in. Our ability to build small-shop quality into inspiring yet affordable instruments is showcased by BTB series basses.

5-STRING

PREMIUM

BTB1605



DTF
(Deep Twilight Flat)
NEW FINISH

- BTB5 9pc Wenge/Bubinga/Maple neck-through w/Graphite reinforcement rods
- 889mm/35" scale
- Poplar Burl top/Mahogany wing body
- Rosewood fretboard w/Abalone off-set dot inlay
- Medium frets w/Premium fret edge treatment
- Graph Tech® BLACK TUSQ XL® nut
- Nordstrand™ “Big Single” pickups
- EQB-IIISC 3-band eq w/Eq bypass switch & Mid frequency switch
- Mono-rail IV bridge
- Gold hardware
- Soft case included

6-STRING

PREMIUM

BTB1606



DTF
(Deep Twilight Flat)
NEW FINISH

- BTB6 9pc Wenge/Bubinga/Maple neck-through w/Graphite reinforcement rods
- 889mm/35" scale
- Poplar Burl top/Mahogany wing body
- Rosewood fretboard w/Abalone off-set dot inlay
- Medium frets w/Premium fret edge treatment
- Graph Tech® BLACK TUSQ XL® nut
- Nordstrand™ “Big Single” pickups
- EQB-IIISC 3-band eq w/Eq bypass switch & Mid frequency switch
- Mono-rail IV bridge
- Gold hardware
- Soft case included

5-STRING



NTF
(Natural Flat)

BTB675

- BTB5 5pc Maple/Bubinga neck-through
- 889mm/35" scale
- Walnut top/Ash wing body
- Rosewood fretboard w/Abalone dot inlay
- Medium frets
- Graph Tech® BLACK TUSQ XL® nut
- Bartolini™ BH1 pickups
- EQB-IIIS 3-band eq w/Mid frequency switch
- Mono-rail II bridge
- Cosmo black hardware

6-STRING



NTF
(Natural Flat)

BTB676

- BTB6 5pc Maple/Bubinga neck-through
- 889mm/35" scale
- Walnut top/Ash wing body
- Rosewood fretboard w/Abalone dot inlay
- Medium frets
- Graph Tech® BLACK TUSQ XL® nut
- Bartolini™ BH1 pickups
- EQB-IIIS 3-band eq w/Mid frequency switch
- Mono-rail II bridge
- Cosmo black hardware

ATK With the ATK, we took the traditional concept of the bass and turned it up to “11”. The result is one of the most straightforward, versatile basses on the market. The ATK’s large Ash body plus its conventional neck design will keep “old school” stylists happy. Additionally, the CAP Double Humbucker gives you three distinct voices at the flick of a switch, allowing you to find the musical sweet spot, no matter what the genre.

NEW MODEL

PREMIUM

ATK810



NTF
(Natural Flat)

- ATK4 3pc Maple neck
- Ash body
- Maple fretboard w/Black dot inlay
- Medium frets w/Premium fret edge treatment
- Graph Tech® BLACK TUSQ XL® nut
- CAP Sonic Arch/CAP Double Humbucker pickups
- Ibanez Custom Electronics 3-band eq
- ATK4 bridge
- Chrome hardware
- Soft case included

Artcore Vintage

More than ever, bassists craving instruments that bear a bit of wear-and-tear are now being forced to spend more than ever for their dream bass. Even relic'd new instruments are commanding outrageous sums, making them equally unattainable. In answer to this demand, Ibanez offers its affordable Artcore Vintage Bass series. The Artcore Vintage “aging” process applies to hardware and other appointments, as well as the body, giving each bass a convincingly real, worn appearance. These basses are still Artcore to the heart... expressive, well-built and dependable.

NEW MODEL



TCL
(Tobacco Burst Low Gloss)

AFBV200A

- Artcore 3pc Maple/Mahogany set-in neck
- 770mm/30.3" scale
- Maple top/back/side
- Bound Rosewood fretboard w/White dot inlay
- Medium frets
- Max body thickness: 3 5/8" /Width at lower bout: 15 3/4"
- Classic Elite Bass pickups
- ART-1 wooden bridge
- Antique chrome hardware

NEW MODEL 5-STRING



TCL
(Tobacco Burst Low Gloss)

AGBV205A

- Artcore-5 3pc Maple/Mahogany set-in neck
- 770mm/30.3" scale
- Maple top/back/side
- Bound Rosewood fretboard w/White dot inlay
- Medium frets
- Max body thickness: 2 5/8" /Width at lower bout: 14 1/2"
- Classic Elite Bass pickups
- Artcore Custom 5 bridge
- Antique chrome hardware

Acoustic Guitars

AVN6 DTS (L) / AW54MINI OPN (R)

Table of Contents

Solid Body Electric Guitars	02-29
Hollow Body Guitars	30-39
Electric Basses	40-57
Acoustic Guitars	
Signature Models	60
Artwood Vintage	61
Artwood	62-63
AEW	64-65
AEL	66-67
AEG	67-69
Talman	69
PF	70-72
Acoustic Basses	72
Classical	73
Ukulele	74
EWP	75
Banjo	75
Mandolin	75
Resonator	76
Jampack	76
Amplifiers/Effects/Accessories	77-97



Signature Models

Joe Satriani



VB
(Vintage Burst High Gloss)

JSA20

- JSA Body
- Solid Engelmann Spruce top
- Solid Rosewood back & sides
- Mahogany neck
- Ebony bridge & fretboard
- Abalone fretboard inlay
- Abalone rosette & body purfling
- Graph Tech® TUSQ® nut & saddle
- Grover® Chrome Die-cast tuners w/Half moon knobs
- Fishman® Acoustic Matrix™ pickup
- Fishman® Aura® Pro preamp w/Onboard tuner & Joe Satriani Original preset sound
- Ibanez Advantage™ bridge pins
- D'Addario® EXP™ strings
- Hardshell case included

Joe Satriani



VB
(Vintage Burst High Gloss)

JSA5

- JSA Body
- Solid Engelmann Spruce top
- Mahogany back & sides
- Mahogany neck
- Rosewood bridge & fretboard
- Abalone fretboard inlay
- Abalone rosette
- Grover® Chrome Die-cast tuners w/Half moon knobs
- Fishman® Sonicore pickup
- Fishman® Presys™ preamp w/Onboard tuner
- Ibanez Advantage™ bridge pins
- D'Addario® EXP™ strings

Steve Vai



BP
(Black Pearl High Gloss)

EP10

- Special Thin EP body
- Solid Engelmann Spruce top
- Solid Mahogany back & sides
- Mahogany neck
- Rosewood bridge & fretboard
- Tree of Life inlay
- Original Metal Plate rosette & Abalone body purfling
- Grover® Gold Die-cast tuners w/Half moon Brown Acrylic knobs
- Fishman® Acoustic Matrix™ pickup
- Fishman® Aura® IC preamp w/Steve Vai Original preset sound
- Ibanez Advantage™ bridge pins
- D'Addario® EXP™ strings
- Hardshell case included

Steve Vai



BP
(Black Pearl High Gloss)

EP5

- Special Thin EP body
- Solid Engelmann Spruce top
- Mahogany back & sides
- Mahogany neck
- Rosewood bridge & fretboard
- "Vai" special inlay on 12th fret
- Original Design Decal rosette
- Gold Die-cast tuners w/Half moon Brown Acrylic knobs
- Fishman® Sonicore pickup
- Ibanez AEQ210TF preamp w/Onboard tuner
- Ibanez Advantage™ bridge pins
- D'Addario® EXP™ strings

Artwood Vintage

The "modern approach to acoustic guitar tradition" has long been our moniker for the Artwood Series. So what's this "Vintage" all about? It's a return to the roots.

Artwood Vintage steps even further back in history, drawing on the inspiration of the very instruments that helped catapult the acoustic guitar into becoming the most beloved and iconic instrument of 20th century American music.

TENOR



NT
(Natural High Gloss)

AVT1

- Parlor 2 body
- 579mm/22.8" scale
- Solid Sitka Spruce top
- Mahogany back & sides
- Mahogany neck (satin finish)
- Rosewood bridge & fretboard
- Bone nut & saddle
- Chrome Open Gear tuners w/Ivory knobs
- Ibanez Advantage™ bridge pins
- D'Addario® J-66 strings
- Factory Tuning: 1A, 2D, 3G, 4C



OPN
(Open Pore Natural)

AVN2

- Parlor body
- 634mm/25" scale
- 12th fret joint
- Solid Mahogany top
- Solid Mahogany back & sides
- Mahogany Soft-V shape neck
- Rosewood bridge & fretboard
- Maple fretboard inlay
- Herringbone rosette
- Bone nut & saddle
- Grover® Chrome Open Gear tuners w/Ivory knobs
- Ibanez Advantage™ bridge pins
- D'Addario® EXP™ strings

NEW MODEL



DTS
(Distressed Tobacco Sunburst Open Pore)

AVN6

- Parlor body
- 634mm/25" scale
- 12th fret joint
- Solid Sitka Spruce top
- Mahogany back & sides
- Mahogany Soft-V shape neck w/Diamond volute
- Rosewood bridge & fretboard
- Gold Mother of Pearl fretboard inlay
- Herringbone rosette
- Aged Bone nut & saddle
- Antique Chrome Open Gear Tuners w/Oval knobs
- Ibanez Advantage™ bridge pins
- D'Addario® EXP™ strings



AW4000 BS

Artwood Traditional Acoustic

The Artwood series was crafted to produce a traditional yet modern guitar. Technology moves forward at a frantic pace and the world of guitar craftsmanship is no different. In producing the Artwood series, we've respected the rich tradition of the acoustic guitar while adding modern interpretations in our continuing search for the ultimate in guitar tone.



BS
(Brown Sunburst High Gloss)

AW4000

- Dreadnought body
- Solid Caucasian Spruce top
- Solid Mahogany back & sides
- Mahogany neck (satin finish)
- Rosewood bridge & fretboard
- Maple fretboard inlay
- Tortoiseshell body binding & backstrip inlay
- Bone nut & saddle
- Grover® Chrome Open Gear tuners w/Butterbean knobs
- Ibanez Advantage™ bridge pins
- D'Addario® EXP™ strings



NT
(Natural High Gloss)

AW70

- Dreadnought body
- Solid Sitka Spruce top
- Mahogany back & sides
- Mahogany neck (satin finish)
- Rosewood bridge & fretboard
- Chrome Die-cast tuners
- Ibanez Advantage™ bridge pins
- D'Addario® EXP™ strings

NEW MODEL



OPN
(Open Pore Natural)

AW54MINIGB

- 3/4 size Dreadnought body
- 579mm/22.8" scale
- Solid Mahogany top
- Mahogany back & sides
- Mahogany neck
- Rosewood bridge & fretboard
- Chrome Die-cast tuners
- Ibanez Advantage™ bridge pins
- D'Addario® EXP™ strings
- Gig bag included

Artwood Traditional Acoustic Electric

Musicians looking for a rich, traditional sound without sacrificing the comforts of a modern guitar can find it with the Traditional Acoustic-Electric Artwood.



BS
(Brown Sunburst High Gloss)

AW4000CE

- Cutaway Dreadnought body
- Solid Caucasian Spruce top
- Solid Mahogany back & sides
- Mahogany neck (satin finish)
- Rosewood bridge & fretboard
- Maple fretboard inlay
- Tortoiseshell body binding & backstrip inlay
- Bone nut & saddle
- Grover® Chrome Open Gear tuners w/Butterbean knobs
- Fishman® Sonicore pickup
- Ibanez AEQ-SP2 preamp w/Onboard tuner
- Balanced XLR & 1/4" outputs
- Ibanez Advantage™ bridge pins
- D'Addario® EXP™ strings



NT
(Natural High Gloss)

AW70ECE

- Cutaway Dreadnought body
- Solid Sitka Spruce top
- Mahogany back & sides
- Mahogany neck (satin finish)
- Rosewood bridge & fretboard
- Chrome Die-cast tuners
- Fishman® Sonicore pickup
- Ibanez AEQ-SP2 preamp w/Onboard tuner
- Balanced XLR & 1/4" outputs
- Ibanez Advantage™ bridge pins
- D'Addario® EXP™ strings



LG
(Natural Low Gloss)

AW65ECE

- Cutaway Dreadnought body
- Solid Cedar top
- Mahogany back & sides
- Mahogany neck
- Rosewood bridge & fretboard
- Wooden rosette
- Chrome Die-cast tuners
- Fishman® Sonicore pickup
- Ibanez AEQ-SP2 preamp w/Onboard tuner
- Balanced XLR & 1/4" outputs
- Ibanez Advantage™ bridge pins
- D'Addario® EXP™ strings



OPN
(Open Pore Natural)

AW54CE

- Cutaway Dreadnought body
- Solid Mahogany top
- Mahogany back & sides
- Mahogany neck
- Rosewood bridge & fretboard
- Chrome Die-cast tuners
- Fishman® Sonicore pickup
- Ibanez AEQ-SP2 preamp w/Onboard tuner
- Balanced XLR & 1/4" outputs
- Ibanez Advantage™ bridge pins
- D'Addario® EXP™ strings

AEW

As an industry leader in the use of Exotic tonewoods, Ibanez continues to innovate with their new AEW series. The thinner, amplification-friendly body of these new acoustic/electrics make them the perfect choice for gigging singer-songwriters. A "soft" Florentine cutaway provides easy accessibility all the way to the 17th fret. The Fishman® Pickup and Ibanez AEQ-SP2 Preamp deliver excellent reproduction and control of tonal characteristics and easy operation, while 1/4" and XLR outputs give you options for a variety of direct plug-in applications. The exotic tonewoods give each respective model a distinctive tone and appearance that will garner attention and inspire the imagination. Let yourself be captured by the grandeur of the AEW Series.

NEW MODEL



NT
(Natural High Gloss)

AEW51

- AEW body
- Sitka Spruce top
- Rosewood/Spalted Maple/Walnut multi-wood mosaic back & sides
- Mahogany neck (satin finish)
- Rosewood bridge & fretboard
- Maple fretboard inlay
- Rosewood/Spalted Maple rosette
- Special Designed headstock inlay
- Multi wooden binding on body & headstock
- Chrome Die-cast tuners w/Black knobs
- Fishman® Sonicore pickup
- Ibanez AEQ-SP2 preamp w/Onboard tuner
- Balanced XLR & 1/4" outputs
- D'Addario® EXP™ strings



NT
(Natural High Gloss)

AEW40AS

- AEW body
- Figured Ash top
- Figured Ash back & sides
- Mahogany neck (satin finish)
- Rosewood bridge & fretboard
- Maple fretboard inlay
- Maple rosette
- Multi wooden body binding
- Chrome Die-cast tuners w/Black knobs
- Fishman® Sonicore pickup
- Ibanez AEQ-SP2 preamp w/Onboard tuner
- Balanced XLR & 1/4" outputs
- D'Addario® EXP™ strings



NT
(Natural High Gloss)

AEW40CD

- AEW body
- Walnut top
- Walnut back & sides
- Mahogany neck (satin finish)
- Rosewood bridge & fretboard
- Maple fretboard inlay
- Maple rosette
- Multi wooden body binding
- Chrome Die-cast tuners w/Black knobs
- Fishman® Sonicore pickup
- Ibanez AEQ-SP2 preamp w/Onboard tuner
- Balanced XLR & 1/4" outputs
- D'Addario® EXP™ strings



NT
(Natural High Gloss)

AEW22CD

- AEW body
- Spruce top
- Walnut back & sides
- Mahogany neck (satin finish)
- Rosewood bridge & fretboard
- Maple fretboard inlay
- Wooden marquetry w/Walnut, Spalted Maple, Rosewood rosette
- Multi wooden binding on body & headstock
- Chrome Die-cast tuners w/Black knobs
- Fishman® Sonicore pickup
- Ibanez AEQ-SP2 preamp w/Onboard tuner
- Balanced XLR & 1/4" outputs
- D'Addario® EXP™ strings



NT
(Natural High Gloss)

AEW23ZW

- AEW body
- Spruce top
- Zebrawood back & sides
- Mahogany neck (satin finish)
- Rosewood bridge & fretboard
- Maple fretboard inlay
- Zebrawood w/Abalone & wooden multi rosette
- Multi wooden binding on body & headstock
- Chrome Die-cast tuners w/Black knobs
- Fishman® Sonicore pickup
- Ibanez AEQ-SP2 preamp w/Onboard tuner
- Balanced XLR & 1/4" outputs
- D'Addario® EXP™ strings

AEW51 NT





AELFF10 NT

NEW MODEL Multi Scale

NT
(Natural High Gloss)

AELFF10

- AEL thin body
- 680mm/26.8" scale at 6th string, 635.0mm/25.0" scale at 1st string
- Sitka Spruce top
- Rosewood back & sides
- Body depth: 90/106mm at neck joint/body end
- Mahogany neck (satin finish)
- Rosewood bridge & fretboard
- Abalone and Maple rosette
- Bone nut & saddle
- Grover® Chrome Die-cast tuners w/Half moon knobs (1:18 gear ratio)
- Fishman® Sonicore pickup
- Ibanez AEQ-SP2 preamp w/Onboard tuner
- Balanced XLR & 1/4" outputs
- Ibanez Advantage™ bridge pins
- D'Addario® EXP™ strings

AEL

Perhaps it's a reaction to the complexity of our times, but music fans and players have rediscovered simple primal power of acoustic fretted instruments. Ibanez AEL is both a celebration of the brand's history as an innovator, and an offering of exciting and unusual musical tools, designed to inspire.

12-STRING

TKS
(Transparent Black Sunburst High Gloss)

AEL2012E

- AEL body
- Flamed Maple top
- Maple back & sides
- Mahogany neck
- Rosewood bridge & fretboard
- Abalone rosette
- Gold Die-cast tuners
- Fishman® Sonicore pickup
- Ibanez AEQ-SP2 preamp w/Onboard tuner
- Balanced XLR & 1/4" outputs
- Ibanez Advantage™ bridge pins
- D'Addario® EXP™ strings

AEG

The AEG series' slender, single-cutaway bodies deliver powerful and balanced acoustic sound, unplugged or through an amp or PA system. These guitars combine easy playability, classic solid and sunburst finishes, and tonal wood materials to create a quality, workhorse acoustic guitar that will rise to any occasion. High quality Fishman® Sonicore pickups and Ibanez preamps with onboard tuners provide the sparkling tones that sound great in any venue.

TGB
(Transparent Gray Burst High Gloss)THS
(Transparent Hibiscus Red Sunburst High Gloss)

AEG24II

- AEG thin body
- 634mm/25" scale
- Flamed Maple top
- Mahogany back & sides
- Body depth: 60/70mm at neck joint/body end
- Mahogany neck (satin finish)
- Rosewood bridge & fretboard
- Acrylic rosette
- Gold Die-cast tuners
- Fishman® Sonicore pickup
- Ibanez AEQ210TF preamp w/Onboard tuner
- Ibanez Advantage™ bridge pins
- D'Addario® EXP™ strings

Baritone

NT
(Natural High Gloss)

AELBT1

- AEL body
- 686mm/27.0" scale
- Spruce top
- Mahogany back & sides
- Mahogany neck (satin finish)
- Rosewood bridge & fretboard
- Abalone and Maple rosette
- Chrome Die-cast tuners
- Fishman® Sonicore pickup
- Ibanez AEQ-SP2 preamp w/Onboard tuner
- Balanced XLR & 1/4" outputs
- Rosewood bridge pins
- D'Addario® EXP™ strings
- Factory Tuning: 1B, 2F#, 3D, 4A, 5E, 6B

AEG15II

LG
(Natural Low Gloss)

- AEG body
- 635mm/25" scale
- Cedar top
- Mahogany back & sides
- Mahogany neck (satin finish)
- Rosewood bridge & fretboard
- Abalone rosette
- Chrome Die-cast tuners
- Fishman® Sonicore pickup
- Ibanez AEQ-SP1 preamp w/Onboard tuner
- Ibanez Advantage™ bridge pins
- D'Addario® EXP™ strings



BK
(Black High Gloss)

NT
(Natural High Gloss)

AEG10II

- AEG body
- 635mm/25" scale
- Spruce top
- Mahogany back & sides
- Mahogany neck (satin finish)
- Rosewood bridge & fretboard
- Abalone rosette
- Chrome Die-cast tuners
- Fishman® Sonicore pickup
- Ibanez AEQ-SP1 preamp w/Onboard tuner
- Ibanez Advantage™ bridge pins
- D'Addario® EXP™ strings

Nylon String



NT
(Natural High Gloss)

BK
(Black High Gloss)

AEG10NII

- AEG body
- Spruce top
- Mahogany back & sides
- Mahogany neck (satin finish)
- Rosewood bridge & fretboard
- Abalone rosette
- Gold Classical tuners
- Fishman® Sonicore pickup
- Ibanez AEQ-SP1 preamp w/Onboard tuner
- D'Addario® EXP™ strings



TBS
(Transparent Blue Sunburst High Gloss)

TRS
(Transparent Red Sunburst High Gloss)

AEG8E

- AEG body
- 634mm/25" scale
- Spruce top
- Mahogany back & sides
- Mahogany neck (satin finish)
- Rosewood bridge & fretboard
- Chrome Die-cast tuners
- Ibanez Under Saddle pickup
- Ibanez AEQ-2T preamp w/Onboard tuner
- Ibanez Advantage™ bridge pins
- D'Addario® EXP™ strings

Nylon String



BKF
(Black Flat)

AEG8TNE

- AEG thin body
- 14th fret joint
- Spruce top
- Mahogany back & sides
- Body depth: 66/76mm at neck joint/body end
- Mahogany neck (satin finish)
- Rosewood bridge & fretboard
- Narrow 46mm width nut
- Chrome Classical tuners
- Ibanez Under Saddle pickup
- Ibanez AEQ-2T preamp w/Onboard tuner
- D'Addario® EXP™ strings

Talman

You've noticed by now that we at Ibanez hold a studious respect for tradition. That said, every now and then you have to hang a right where everyone else is turning left. The double-cutaway Talman is our rebel with a cause. Electric players looking to add an acoustic-guitar dimension to their arsenal go head-over-heels for this distinctive hybrid.



NT
(Natural High Gloss)

VBS
(Vintage Brown Sunburst High Gloss)

TCM50

- Talman Double Cutaway body
- 16th fret joint
- Figured Ash top
- Mahogany back & sides
- Mahogany neck
- Rosewood bridge & fretboard
- Maple marquetry rosette
- Chrome Die-cast tuners
- Ibanez AP2 Magnetic pickup
- Ibanez AEQ200M preamp w/2-band EQ
- Ibanez Advantage™ bridge pins
- D'Addario® EXP™ strings



BK
(Black High Gloss)

TBS
(Transparent Blue Sunburst High Gloss)

TCY10E

- Talman Double Cutaway body
- 16th fret joint
- Spruce top
- Mahogany back & sides
- Mahogany neck
- Rosewood bridge & fretboard
- Chrome Die-cast tuners
- Ibanez Under Saddle pickup
- Ibanez AEQ-2T preamp w/Onboard tuner
- Ibanez Advantage™ bridge pins

PF With PF Performance acoustic guitars, you get professional features and great sound at extremely affordable prices backed by the Ibanez name and quality.



BK
(Black High Gloss)

NT
(Natural High Gloss)

PF15

- Dreadnought body
- Spruce top
- Mahogany back & sides
- Mahogany neck
- Rosewood bridge & fretboard
- Chrome Die-cast tuners
- Ibanez Advantage™ bridge pins
- D'Addario® EXP™ strings

12-STRING



NT
(Natural High Gloss)

PF1512

- Dreadnought body
- Spruce top
- Mahogany back & sides
- Mahogany neck
- Rosewood bridge & fretboard
- Chrome Die-cast tuners
- Ibanez Advantage™ bridge pins
- D'Addario® EXP™ strings



OPN
(Open Pore Natural)

PC12MH

- Grand Concert body
- 634mm/25" scale
- Mahogany top
- Mahogany back & sides
- Mahogany neck
- Rosewood bridge & fretboard
- Tortoiseshell rosette
- Chrome Open Gear tuners w/Butterbean knobs
- Ibanez Advantage™ bridge pins
- D'Addario® EXP™ strings



OPN
(Open Pore Natural)

PF2MH

- 3/4 size Dreadnought body
- 580mm/22.8" scale
- Mahogany top
- Mahogany back & sides
- Mahogany neck
- Rosewood bridge & fretboard
- Chrome Covered tuners
- Ibanez Advantage™ bridge pins
- Gig bag included



BK
(Black High Gloss)

PF15ECE

- Cutaway Dreadnought body
- Spruce top
- Mahogany back & sides
- Mahogany neck
- Rosewood bridge & fretboard
- Chrome Die-cast tuners
- Ibanez Under Saddle pickup
- Ibanez AEQ-2T preamp w/Onboard tuner
- Ibanez Advantage™ bridge pins
- D'Addario® EXP™ strings



TBS
(Transparent Blue Sunburst High Gloss)



NT
(Natural High Gloss)



LG
(Natural Low Gloss)

PF17ECE

- Cutaway Dreadnought body
- Cedar top
- Mahogany back & sides
- Mahogany neck
- Rosewood bridge & fretboard
- Rosewood rosette
- Chrome Die-cast tuners
- Ibanez Under Saddle pickup
- Ibanez AEQ-2T preamp w/Onboard tuner
- Ibanez Advantage™ bridge pins
- D'Addario® EXP™ strings



NT
(Natural High Gloss)

PN1

- Parlor 2 body
- 620mm/24.4" scale
- 12th fret joint
- Spruce top
- Mahogany back & sides
- Mahogany neck
- Rosewood bridge & fretboard
- Classical Mosaic designed rosette
- Herringbone purfling
- Chrome Open Gear tuners w/Ivory knobs
- Ibanez Advantage™ bridge pins

NEW MODEL



VMS
(Vintage Mahogany Sunburst High Gloss)

PN12E

- Parlor body
- 620mm/24.4" scale
- Mahogany top
- Mahogany back & sides
- Mahogany neck
- Rosewood bridge & fretboard
- Chrome Die-cast tuners
- Ibanez Under Saddle pickup
- Ibanez AEQ-2T preamp w/Onboard tuner
- Ibanez Advantage™ bridge pins

Acoustic Basses

The Ibanez guiding philosophy for acoustics, "a modern approach to acoustic guitar tradition," extends quite naturally to their acoustic bass collection. With tone, style, playability at an incredible value, Ibanez acoustic basses are creatively inspiring tools designed to thrive in wide variety of musical situations.



BK
(Black High Gloss)

AEB8E

- AEB body
- 815mm/32" scale
- Spruce top
- Mahogany back & sides
- Mahogany neck
- Rosewood bridge & fretboard
- Chrome Die-cast tuners
- Ibanez Under Saddle pickup
- Ibanez AEQ-2T preamp w/Onboard tuner
- D'Addario® EXP™ strings



OPN
(Open Pore Natural)

PCBE12MH

- Grand Concert body
- 812.8mm/32" scale
- Mahogany top
- Mahogany back & sides
- Maple neck
- Rosewood bridge & fretboard
- Tortoiseshell rosette
- Chrome Die-cast tuners
- Ibanez Under Saddle pickup
- Ibanez AEQ-2T preamp w/Onboard tuner
- D'Addario® EXP™ strings

Classical

Ibanez classical guitars take the guesswork out of finding an affordable, great-sounding classical guitar that's easy to play. Whether you are looking for a traditional classical-sized instrument or a comfortable nylon-string beginner guitar, they are extremely well-constructed, affordable, and have the pristine tonality and playability of much more expensive instruments.



AM
(Amber High Gloss)

GA6CE

- Cutaway Classical body
- Spruce top
- Mahogany back & sides
- Mahogany neck
- Rosewood bridge & fretboard
- Classical Mosaic Design rosette
- Gold Classical tuners
- Ibanez Under Saddle Pickup
- Ibanez AEQ45 preamp w/4-band eq



AM
(Amber High Gloss)

GA5TCE

- Thinline Cutaway Classical body
- 14th fret joint
- Spruce top
- Mahogany back & sides
- Body depth: 60/70mm at neck joint/body end
- Mahogany neck
- Rosewood bridge & fretboard
- Narrower 46mm width nut
- Classical Mosaic Design rosette
- Gold Classical tuners
- Ibanez Under Saddle Pickup
- Ibanez AEQ303 preamp w/3-band eq



AM
(Amber High Gloss)

GA3ECE

- Cutaway Classical body
- Spruce top
- Agathis back & sides
- Mahogany neck
- Rosewood bridge & fretboard
- Classical Mosaic Design rosette
- Chrome Classical tuners
- Ibanez Under Saddle pickup
- Ibanez AEQ200T preamp w/Onboard tuner



AM
(Amber High Gloss)

GA3

- Classical body
- Spruce top
- Agathis back & sides
- Mahogany neck
- Rosewood bridge & fretboard
- Classical Mosaic Design rosette
- Chrome Classical tuners

Ukulele

The sweet-toned, nylon-stringed ukulele originated in the 19th century Hawaii. It gained great popularity in the U.S. during the early 20th century and from there spread internationally. Ibanez is pleased to offer variety of models, including those with electronics. Our lineup includes soprano and concert-size ukuleles, which bring the rich, textured sounds to your fingertips.



OPN
(Open Pore Natural)

UEW5

- Cutaway Concert Style EW body
- Mahogany top
- Mahogany back & sides
- Mahogany neck
- Rosewood bridge & fretboard
- Maple fretboard inlay
- Abalone rosette
- Chrome Open Gear tuners
- Ibanez/Aquila® NYLBLACK Ukulele strings

NEW MODEL



OPN
(Open Pore Natural)

UEWT5

- Cutaway Tenor Style EW body
- Mahogany top
- Mahogany back & sides
- Mahogany neck
- Rosewood bridge & fretboard
- Maple fretboard inlay
- Abalone rosette
- Chrome Open Gear tuners
- Ibanez/Aquila® NYLBLACK Ukulele strings



UKC10

- Concert body
- Mahogany top
- Mahogany back & sides
- Mahogany neck
- Rosewood bridge & fretboard
- Chrome Open Gear tuners
- Open Pore Natural finish
- Gig bag included



UKS10

- Soprano body
- Mahogany top
- Mahogany back & sides
- Mahogany neck
- Rosewood bridge & fretboard
- Chrome Open Gear tuners
- Open Pore Natural finish
- Gig bag included



IUKS5

Includes

- Soprano Style ukulele
- Padded Gig Bag
- Chromatic Clip-on tuner
- Mahogany back & sides



EWP

The EWP Ibanez combines the compact size of a ukulele with the musical sophistication of a guitar. Steel strings and a 42mm nut width make a guitar player feel immediately at home. Add a graceful compact Florentine cutaway and you've got a little guitar that'll go a long way—for practice, jamming or late night road warrior relaxation.

NEW MODEL Piccolo Guitar



OPN
(Open Pore Natural)

EWP14WB

- Cutaway Tenor Style EW body
- 432mm/17" scale
- 14th fret joint
- Ovangkol top
- Ovangkol back & sides
- Mahogany neck
- Rosewood bridge & fretboard
- 400mm radius fretboard
- 42mm width nut
- Maple fretboard inlay
- Abalone rosette
- Chrome Die-cast tuners
- Extra Light Gauge Phosphor Bronze strings
- Factory Tuning: 1A,2E,3C,4G,5D,6A
- Gig bag included

Banjo

It's been three decades since Ibanez was in the banjo biz, but we're back with a bang ... or is it a twang? Old-timers may recall Ibanez was quite enamored with banjo-building, having even collaborated on an artist signature model with the late, great Earl Scruggs. But, things change, and hair bands happen. And now, we're back at it, and in the Ibanez tradition, our banjos deliver a sweet 5-string closed-back banjo at a price that won't break the bank.



B50

- Mahogany rim
- Mahogany veneer resonator
- 24pcs bracket
- Mahogany neck
- Remo® 11" Coated Weatherking Banjo head
- Chrome Open Gear tuners
- Natural High Gloss finish

Mandolin

Mandolins have been gracing music since the 17th century and their popularity is a testament to their unique, crisp sound. We offer vast selection from the traditional pure acoustic to the acoustic-electric option, all in attractive classic finishes.



BS
(Brown Sunburst High Gloss)

M510E

- A-style body
- Spruce top
- Mahogany back & sides
- Mahogany neck
- Rosewood bridge & fretboard
- Chrome Mandolin tuners
- Magnetic single pickup
- Volume & Tone passive control

Resonator

Take a step back in time with this old-school resonator guitar, the RA200. In keeping with traditional design, the metal cone's rich vibration is maximized by the RA200's built-in shell. Patterned after favorite vintage pieces, this Resonator guitar is the latest addition to our line of classic acoustic folk instruments built with the laser-aided technology it takes to deliver unprecedented quality with mind-boggling affordability.

NEW MODEL



BS
(Brown Sunburst High Gloss)

RA200

- Resonator Body
- Mahogany top
- Mahogany back & sides
- Mahogany neck
- Wooden body binding
- Rosewood saddle & fretboard
- Chrome Resonator tuners
- D'Addario® EXP™ strings

Jampack

Jampacks are perfect for beginning students and come with “Everything You Need To Get Out and Jam” – guitar, electronic tuner, and a whole lot more.



NT
(Natural High Gloss)



VS
(Vintage Sunburst High Gloss)

V50NJP

Includes

- V50 Dreadnought Acoustic guitar
- Gig bag
- Chromatic Clip-on tuner
- Guitar strap
- Accessory pouch
- Picks



Table of Contents

Solid Body Electric Guitars	02-29
Hollow Body Guitars	30-39
Electric Bases	40-57
Acoustic Guitars	58-76
Amplifiers/Effects/Accessories	
Tube Screamer Amplifier	78-79
Iron Label Amplifier	80
Promethean	81-82
IBZ	82-83
Troubadour	83
Tube Screamer	84
9 Series	85
MINI Pedals	85
Signature Effect Pedal	86
Echo Shifter	86
Wah Pedal	86
Adapter	86
Tuners	87
Cables	87
Cases	88
Bags	89
Stands	90
Straps	90-91
Picks	92-93
Strings	94
Accessories & Tools	95-97

Amplifiers Effects Accessories





Tube Screamer Amplifier

The Ibanez Tube Screamer has long been the name people think of first when it comes to overdrive pedals. The Ibanez TSA line comes with our legendary Tube Screamer circuit built in. The TSA line of amp is perfect for creating natural clean tones, fat crunch tones, and smooth overdrive tones with its built in Tube Screamer circuit. Each cabinet has been designed to maximize the performance of these amps featuring Celestion® and Jensen® speakers.



Guitar Combo Amplifier TSA30

- output power 30W@4Ω / 8Ω / 16Ω
- speaker unit 12" Celestion® Seventy80
- controls Boost/Normal switch, Tube Screamer on/off switch, Gain, Master Volume, Bass, Middle, Treble
Tube Screamer section: Overdrive, Tone, Level
- i/o's Input, Footswitch, Effect Loop (Send/Return), Speaker out, External speaker out
- cabinet Semi open back
- tube Pre amp: 12AX7 x 3, Power amp: 6L6GC x 2
- speaker output 2 outputs (4Ω / 8Ω / 16Ω switchable)
- size 478(W) x 265(D) x 445(H)(mm)
- weight 17.7kg

IFS2G



Sold Separately
Dual Latching footswitch



Guitar Amplifier Head TSA15H

IFS2G



Sold Separately
Dual Latching footswitch

- output power Pentode - 15W / Triode - 5W @4Ω / 8Ω / 16Ω
- controls Boost/Normal switch, Tube Screamer on/off switch, Master volume, Bass, Treble
Tube Screamer section: Overdrive, Tone, Level
- i/o's Input, Footswitch, Effect loop (Send/Return), Speaker output
- tube Pre amp: 12AX7x2 Power amp: 6V6GTx2
- speaker output 2x 4Ω, 2x 8Ω, 1x 16Ω
- size 368(W) x 200(D) x 172(H)(mm)
- weight 7.6kg

Speaker Cabinet TSA112C

- power handling 80W
- speaker 12" Celestion® Seventy80
- i/o's Input 8Ω
- cabinet Semi open back
- size 460(W) x 305(D) x 410(H)(mm)
- weight 13.0kg



Guitar Combo Amplifier TSA15

IFS2G



Sold Separately
Dual Latching footswitch

- output power Pentode - 15W / Triode - 5W @4Ω / 8Ω / 16Ω
- speaker unit 12" Celestion® Seventy80
- controls Boost/Normal switch, Tube Screamer on/off switch, Master volume, Bass, Treble
Tube Screamer section: Overdrive, Tone, Level
- i/o's Input, Footswitch, Effect loop (Send/Return), Speaker output
- cabinet Semi open back
- tube Pre amp: 12AX7 x 2, Power amp: 6V6GT x 2
- speaker output 2 x 4Ω, 2 x 8Ω, 1 x 16Ω
- size 435 (W) x 222 (D) x 435 (H)(mm)
- weight 15.0kg



Guitar Combo Amplifier TSA5TVR

IFS1G



Sold Separately
1 Channel Latching footswitch

- output power 5W@8Ω
- speaker unit Jensen® C8R Ibanez special
- reverb unit Accutronics® spring reverb tank
- controls Tube Screamer on/off switch, Master Volume, Reverb, Bass, Treble
Tube Screamer Section: Overdrive, Tone, Level
- i/o's Input, Footswitch, Speaker out, Headphones out, Line out
- cabinet Semi open back
- tube Pre amp: 12AX7 x 1, Power amp: 6V6GT x 1
- speaker output 1 x 8Ω
- size 355(W) x 210(D) x 430(H)(mm)
- weight 8.3 kg

Iron Label Amplifier

With downtune and nothing but downtune in mind, we modded and tweaked until we got to the thickest, heaviest sounding metal-to-the-core hi-gain combo tube amp we've ever built. The Iron Label edict "Everything You Need And Nothing You Don't" is fully evident here: 12" Celestion® Seventy80 Speaker, 2 x 12AX7, 2 x EL84 tubes, built-in spring reverb, footswitchable "fat" switch, built-in FX loop, and an illuminated control panel.



Guitar Combo Amplifier IL15

IFS2L



Sold Separately
Dual Latching footswitch

IFS1L



Sold Separately
1 Channel Latching footswitch

- output power 15W@4Ω/8Ω
- speaker unit 12" Celestion® Seventy80
- controls Channel switch, Fat switch, Master Volume, Reverb, Clean/Crunch CH.: Volume, Bass, Middle, Treble, Lead CH.: Gain, Volume, Bass, Middle, Treble
- i/o's Input, Effect Loop (Send/Return), Footswitch (Channel, Reverb on/off, Fat on/off), Speaker output, External speaker output
- cabinet Semi open back
- tube Pre amp: 12AX7 x 2, Power amp: EL84 x 2
- speaker output 2 outputs (4Ω/8Ω switchable)
- size 540(W) x 245(D) x 480(H)(mm)
- weight 16.7 kg

Promethean

Designed for busy working musicians, the Promethean amplifier is the perfect fit for traveling from venue to venue. This Class-D amp offers more than just reliability. A powerful output and selected functions make it easier to adjust during live performances. If you're on stage, you need a dependable workhorse of an amp; you need the Promethean.



Bass Combo Amplifier P3115

- output power 300W @4Ω
- speaker unit 15" Speaker, Piezo Tweeter
- controls Gain, High, Mid, Low, Phat, Master, Limiter on/off switch
- i/o's Input, AUX input, Headphones out, Line out
- cabinet Closed back
- size 437(W) x 390(D) x 522(H)(mm)
- weight 17.8kg



Bass Combo Amplifier P20

- output power 20W @8Ω
- speaker unit 8" Speaker
- controls High, High-Mid, Low-Mid, Low, Master, -10dB Input pad
- i/o's Input, AUX input, Headphones out
- cabinet Closed back
- size 330(W)x310(D)x350(H)(mm)
- weight 7.8kg



Bass Amplifier Head P300H

- output power 300W @4Ω
- controls Gain, High, Mid, Low, Phat, Master, Limiter on / off switch
- i/o's Input, AUX input, Headphones out, Line out, Speaker out (1/4" x 2)
- size 240(W) x 230(D) x 54(H)(mm)
- weight 2.2kg



Speaker Cabinet P410CC

- output power 250W@8Ω
- speaker unit 4x10" Speaker, Horn Tweeter
- i/o's 1/4" jack x 2
- cabinet Ported Cabinet
- size 620(W) x 400(D) x 620(H)(mm)
- weight 33.2kg



IL15



Speaker Cabinet P210KC

- output power 250W@8Ω
- speaker unit 2x10" Speaker, Horn Tweeter
 - i/o's 1/4" jack x 2
- cabinet Tilt-back, Ported Cabinet
- size 620(W) x 380(D) x 465(H)(mm)
- weight 22.3kg



BGP500

Bag for P500H and P300H.

IBZ

These Ibanez practice amps provide players with full-on guitar and bass sound.



Guitar Combo Amplifier IBZ15GR

- output power 15W@4Ω
- speaker unit 8" Speaker
- controls Normal Channel - Volume, Channel Switch, Distortion Channel - Gain, Volume, Bass, Middle, Treble, Reverb
 - i/o's Guitar Input, Aux Input, Headphones Out
- cabinet Closed back
- size 355(W) x 210(D) x 340(H) (mm)
- weight 6.1kg



Guitar Combo Amplifier IBZ10G

- output power 10W@8Ω
- speaker unit 6.5" Speaker
- controls Distortion On/Off Switch, Gain, Bass, Treble, Volume
 - i/o's Guitar Input, Headphones Out, Aux Input
- cabinet Closed back
- size 274(W) x 205(D) x 313(H) (mm)
- weight 5.3kg



Bass Combo Amplifier IBZ10B

- output power 10W@8Ω
- speaker unit 6.5" Speaker
- controls Bass, Middle, Treble, Volume
 - i/o's Bass Input, Headphones Out, Aux Input
- cabinet Closed back
- size 274(W) x 205(D) x 313(H) (mm)
- weight 5.1kg

Troubadour What's the one thing that almost all small venue musicians strive for when it comes to amplifiers? Some might say "pure immersive tone", which would undoubtedly be followed by "portability". The Ibanez T Series Acoustic Guitar Amplifiers deliver exactly that, along with the striking appearance of a hand-crafted boutique amplifier. Whether you're playing at the local coffee shop or you're gigging at religious venues, the sounds of the T Series will fill the room. Plus, you won't have to break your back getting your amp in and out. The Ibanez T Series was designed with portability in mind.



Ac. Guitar Combo Amplifier T80N

- output power 80W@4Ω
- speaker unit 10" Coaxial Speaker(with tweeter)
- controls Volume, Treble, Middle, Bass, Chorus, Reverb, Notch Filter, Master Volume, Aux Volume
 - i/o's 2 x 1/4" input, 2 x XLR input, Aux input, Headphones out with Stereo FX, Line out(L/R), Footswitch
- cabinet Closed back w /Tilt up System
- size 340(W) x 300(D) x 340(H)(mm)
- weight 9.0kg

IFS2U



Sold Separately
Dual Unlatching footswitch



Ac. Guitar Combo Amplifier T30

- output power 30W@8Ω
- speaker unit 8" Coaxial Speaker (with tweeter)
- controls Guitar Channel with Volume, Bass, Treble, Chorus Speed and On/Off switch, Microphone Channel with Volume, Bass Treble, Master with Reverb, Master Volume
 - i/o's Guitar input, Microphone input(XLR), Headphones out, Aux input
- cabinet Closed back w / Tilt up System
- size 340(W) x 240(D) x 276(H)(mm)
- weight 6.2kg



Ac. Guitar Combo Amplifier T15

- output power 15W@6Ω
- speaker unit 6.5" Full Range
- controls Volume, Bass, Treble, Chorus On/Off
 - i/o's Guitar input, Headphones out
- cabinet Closed back w / Tilt up System
- size 240(W) x 160(D) x 230(H)(mm)
- weight 2.9kg

TUBE SCREAMER

The Ibanez Tube Screamer, in its many versions and forms, can be found on pedal boards in every corner of the globe, on arena stages, in small studios, and bedrooms. Its warm overdrive is a sound many players, from advanced to beginner, could never do without.



Tube Screamer mini

TSMINI

- Tone, Overdrive and Level controls
- True Bypass
- Power Supply: External AC adapter AC509 (sold separately)

Hand-Wired Tube Screamer

TS808HWB

- Limited Production
- Completely Hand-wired
- Overdrive, Tone and Level controls
- Japanese MOGAMI OFC Cable
- True Bypass
- Power Supply: One 9 Volt Battery or external AC adapter AC509 (sold separately)
- Special Metal Box included

Tube Screamer w/Booster

TS808DX

- Overdrive and Booster in one box
- Overdrive : Overdrive, Tone and Level controls
- Booster : Boost, Switch for Pre Overdrive / Post Overdrive
- True Bypass
- Voltage Switch : 9volt / 18volt
- Power Supply: One 9 Volt Battery or external AC adapter AC509 (sold separately)

9 Series

For more than a quarter century, the Tube Screamer has continued to captivate players as the first name in overdrive pedals. With that same distinctive sound and high quality, the Ibanez compact effect pedals are esteemed even by pro players and set the new standard in guitar sound.



Distortion

SD9M

- Dist, Tone and Level controls
- Gain switch for additional gain
- Mids switch for additional mid
- Power Supply: One 9 Volt Battery or external AC adapter AC509 (sold separately)



Distortion

JD9

- Drive, Mid, Volume and Tone controls
- True Bypass
- Power Supply: One 9 Volt Battery or external AC adapter AC509 (sold separately)



Booster

BB9

- Gain, Tone and Level controls
- True Bypass
- Power Supply: One 9 Volt Battery or external AC adapter AC509 (sold separately)

MINI

The new Ibanez MINI series pedals answer the needs of today's guitarist. Built in Japan to the highest standards, they deliver warm analog classic sounds, with quality and tone of a full size pedal — all in a compact casing that won't eat up your pedal board or your budget.



The Original Tube Screamer

TS808

- Overdrive, Tone and Level controls
- Power Supply: One 9 Volt Battery or external AC adapter AC509 (sold separately)



Tube Screamer

TS9

- Drive, Tone and Level controls
- Power Supply: One 9 Volt Battery or external AC adapter AC509 (sold separately)



Turbo Tube Screamer

TS9DX

- Drive, Tone, and Level controls
- Modes: Turbo, Hot, +, TS9
- Power Supply: One 9 Volt Battery or external AC adapter AC509 (sold separately)



Bass Tube Screamer

TS9B

- Drive, Mix, Bass, Treble and Level controls
- Power Supply: One 9 Volt Battery or external AC adapter AC509 (sold separately)



Analog Delay

ADMINI

- Repeat, Delay time and Blend controls
- True Bypass
- Delay Time: 20ms - 600ms
- Power Supply: External AC adapter AC509 (sold separately)

NEW MODEL



Chorus

CSMINI

- Depth, Speed and Level controls
- True Bypass
- Power Supply: External AC adapter AC509 (sold separately)

NEW MODEL



Distortion

SMMINI

- Edge, Punch, Drive, Attack and Level controls
- True Bypass
- Power Supply: External AC adapter AC509 (sold separately)

NEW MODEL

Signature Effect Pedal

The Paul Gilbert Signature AF2 AIRPLANE FLANGER is two pedals in one package. One section is a traditional chorus flange (TAXI); the other is an insane (TAKEOFF) flange (hence the "AIRPLANE" moniker), which provides virtuoso guitarist Paul Gilbert's own "Crazy Flange" sound. Time to buckle up. The AF2 features Manual (delay time), Speed (modulation speed), Range (depth of modulation), and Enhance (feedback) controls.



Paul Gilbert Signature Flanger "AIRPLANE FLANGER"

AF2

- controls TAXI Mode : Flange/Chorus Type Modulation Effect
MANUAL : Delay Time
SPEED : Modulation Speed
RANGE : Depth of Modulation
ENHANCE : Feedback
TAKEOFF Mode : Jet Sound (shifting pitch up and down)
- switches EFFECT ON/OFF Switch, TAXI/TAKEOFF Switch
- i/o's INPUT/OUTPUT (Mono)
- size 180(W) x 134(D) x 65(H)(mm)
- weight 860g
- power source Operates with a DC 9V AC Adapter

Echo Shifter

To the fans of analog delay pedals: Your prayers are answered. With the introduction of the ES2, Ibanez combines true analog sound quality with digital-like flexibility: features like a tap-tempo footswitch, allowing on-the-fly tempo adjustment (a rarity among analog stompboxes). The ES2 also offers an infinite variety of sonic possibilities, with features like an oscillation switch, feedback control, modulation, and a depth control that promises miles of creative inspiration.



Analog Delay ES2

- controls Tap/ Delay Time/ Feedback w/ Oscillation On/Off
Mix/ Depth w/ Modulation On/Off
- delay time 30ms - 1000ms
- size 120(W) x 160(D) x 65(H)(mm)
- weight 630g
- power source One 9V Battery or external
AC Adapter AC509 (sold separately)

Tuners

In the process of designing six, seven, and eight string guitars for players who use all kinds of alternate tunings, we learned plenty about what works and what doesn't when it comes to tuners. Ibanez makes tuners that work—quickly, accurately, and with the reliability that performers have come to trust.



Clip Chromatic Tuner

PU3

- Clip tuner with LCD display
- Tuning Range: A0 (27.50Hz) - C8 (4186Hz)
- Calibration : A4=440Hz
- Automatic Power ON/OFF
- Power Supply: Lithium battery



Metronome Tuner

MU2

- Modes: Metronome/Chromatic/Guitar/Bass/Ukulele
- Tuner: Calibration: 430 - 450 Hz
Tuning Range: A0 (27.5Hz) - C8 (4186Hz)
Drop tune: Flat 3 semitones
- Metronome: Tempo: 30 - 250 bpm
Time Signatures: Quarter/ Eighth/Sixteenth/ Triplet

Cables

Series	Model	Length	Description
HF	HF10	3.05m 10ft	2 Straight plugs
	HF10L	3.05m 10ft	Straight & Right Angled plugs
	HF20	6.10m 20ft	2 Straight plugs
	HF20L	6.10m 20ft	Straight & Right Angled plugs
	HF05P	0.15m 0.5ft	Patch Cable 2 Right Angled plugs
	HF05P (woven) (BK)	0.15m 0.5ft	Patch Cable 2 Right Angled plugs
	HF07P	0.21m 0.7ft	Patch Cable 2 Right Angled plugs
NS	NS10	3.05m 10ft	2 Straight plugs
	NS10L	3.05m 10ft	Straight & Right Angled plugs
	NS20	6.10m 20ft	2 Straight plugs
	NS20L	6.10m 20ft	Straight & Right Angled plugs
SI	SI04PR	0.12m 0.4ft	Patch Cable Right Angle & Reversed Right Angled plugs
	SI05P	0.15m 0.5ft	Patch Cable 2 Right Angled plugs
	SI05P(woven) (CCT/CGR/BG/BW)	0.15m 0.5ft	Patch Cable 2 Right Angled plugs
	SI07P	0.21m 0.7ft	Patch Cable 2 Right Angled plugs
	SI07P(woven) (CCT/CGR/BG/BW)	0.21m 0.7ft	Patch Cable 2 Right Angled plugs
	SI10	3.05m 10ft	2 Straight plugs
	SI10(woven) (CCT/CGR/BG/BW)	3.05m 10ft	2 Straight plugs
PA	SI10L	3.05m 10ft	Straight & Right Angled plugs
	SI20	6.10m 20ft	2 Straight plugs
	SI20(woven) (CCT/CGR/BG/BW)	6.10m 20ft	2 Straight plugs
	SI20L	6.10m 20ft	Straight & Right Angled plugs
	PA0105	0.15m 0.5ft	Patch Cable 2 Right Angled plugs
	PA0107	0.21m 0.7ft	Patch Cable 2 Right Angled plugs
	PA01K10L	-	Patch Cable Kit 10ft cable + Angled plug x 10
	PA01K5L	-	Patch Cable Kit 5ft cable + Angled plug x 6



HF10



NS10



SI10 CCT

SI10 CGR

SI10 BG

SI10 BW



SI04PR



PA0105



PA01K10L

Weeping Demon

The Ibanez WD7 Weeping Demon Wah Pedal will have your audience screaming for more with its shrieks, cries, wails, and seductive siren songs. Among its features are spring and normal footboard action, selectable wah range, and fine tuning controls.



Wah Pedal WD7

- controls Level, Auto Off Delay, Q, Lo, Range Fine Tuning, Foot SW, Mode Lever
- i/o's Input, Output
- size 154(W) x 259(D) x 117(H)(mm)
- power supply One 9 Volt Battery or external AC adapter AC509 (sold separately)



Wah Pedal WH10V2

- controls Depth
- switches Effect on/off, Frequency range(GTR/BASS)
- i/o's Input, Output, Dry Out
- size 87(W) x 202(D) x 84(H)(mm)
- power supply One 9 Volt Battery or external AC adapter AC509 (sold separately)

Adapter

AC509

- Input Voltage: 220V - 240V
- Output Voltage: 9V
- Output Current: 500mA
- Cable Length: 6' / 1.8m



DC3N

- Splitter cord for powering 3 pedals from one adapter



DC5N

- Splitter cord for powering 5 pedals from one adapter



Cases

Wooden Case

Model	Description
W101RG	for RG, RGA, RGD, S, SA, RC, left handed models
W100BTB	for BTB, ATK
W100SR	for SR, SRX



W101RG

Model	Description
AF-C	for AF, AK, AFJ, AKJ
AS-C	for AS, ASR
AM-C	for AM
GB-C	for AG, AGR
AR-C	for GAX, AR, ART, ARZ
AFS-C	for AFS
BJ-C	for Banjo



AS-C



AF-C

Molded Case

Model	Description
MB100C	for SR
M100C	for RG, RGD, RG7, S, S7, SA (except 27" scale & left handed models)



M100C



MB100C

Foamed Case

Model	Description
FS30DA	for AW, AVD, V, PF, PF1512
FS31CL	for AEG, PN, AVN, GA(except GA5TCE)
FS30FK	for AC, PC
FS30MA	for Mandolin



FS30DA



FS30MA

Bags

POWERPAD®

510 gig bag

Model	Description
IGB510-BK	POWERPAD® gig bag for El. Guitar
IBB510-BK	POWERPAD® gig bag for El. Bass
IAB510-BK	POWERPAD® gig bag for Ac. Guitar
ICB510-BK	POWERPAD® gig bag for Classical Guitar
IABB510-BK	POWERPAD® gig bag for Ac. Bass

IGB510-BK



IAB510-BK

Standard gig bag

Model	Description
IGB101	Bag for El. Guitar
IBB101	Bag for El. Bass
IAB101	Bag for Ac. Guitar
IABB101	Bag for Ac. Bass
ICB101	Bag for Classical Guitar

IGB101



IAB101

Ukulele bag

Model	Description
IUBT301-BK NEW	Bag for Tenor Style Ukulele



Stands

Guitar/Bass Stand

Model	Description
839	Professional Guitar Stand by TAMA
ST101	El.Guitar/Bass & Acoustic Guilar Stand, Foldable for gig bag pocket
PT32-BK	"Pocket Titan" stand for El.Guitar/Bass. Foldable for gig bag pocket



ST101



PT32-BK



839



Straps

POWERPAD® Strap

Model	Description
GSF50-BK	POWERPAD® Guitar Strap / Color: Black (1,150 (MIN) - 1,350 (MAX) mm/50mm)
GSF50-RD	POWERPAD® Guitar Strap / Color: Red (1,150 (MIN) - 1,350 (MAX) mm/50mm)
GSF50-BR	POWERPAD® Guitar Strap / Color: Brown (1,150 (MIN) - 1,350 (MAX) mm/50mm)
GSF50-YE	POWERPAD® Guitar Strap / Color: Yellow (1,150 (MIN) - 1,350 (MAX) mm/50mm)
GSF50-BL	POWERPAD® Guitar Strap / Color: Blue (1,150 (MIN) - 1,350 (MAX) mm/50mm)
GSF50-LT	POWERPAD® Guitar Strap / Color: Light Teal (1,150 (MIN) - 1,350 (MAX) mm/50mm)
GSF50-MGN	POWERPAD® Guitar Strap / Color: Moss Green (1,150 (MIN) - 1,350 (MAX) mm/50mm)



Design Strap

Model	Description
GSD50-P6	Guitar Strap / Ibanez Logo (1,700 mm/50mm)
GSD50-P7	Guitar Strap / Tattoo (1,700 mm/50mm)
GSD50-P8	Guitar Strap / Skull (1,700 mm/50mm)



Prestige Leather Strap

Model	Description
GSL7070KP-BP	Leather Strap / Color: Black Pearl (1,450(MAX)mm/70mm)



Ibanez Quick Acoustic Strap

Model	Description
GSQ501-BR	Guitar Strap / Color: Brown (1,580mm/50mm)
GSQ50	Guitar Strap (1,580mm/50mm)



Standard Strap

Model	Description
GST62-BK	Guitar Strap with Pick holder/ Color: Black (1,650mm/60mm)
GST62-BR	Guitar Strap with Pick holder/ Color: Brown (1,650mm/60mm)
GST62-NB NEW	Guitar Strap with Pick holder/ Color: Navy Blue (1,650mm/60mm)



Model	Description
GST611LG-SL	Guitar Strap with Pick holder/ Color: Silver (1,650mm/60mm)
GST611LG-RD	Guitar Strap with Pick holder/ Color: Red (1,650mm/60mm)



Model	Description
GST610TA-BK	Guitar Strap with Pick holder/ Color: Tattoo Black (1,650mm/60mm)
GST610TA-WH	Guitar Strap with Pick holder/ Color: Tattoo White (1,650mm/60mm)



Picks

Pick Actual Size



ELASTOMER Picks

NEW

Model	Shape	Thickness	Material	Color
EL4ST22	Triangle	2.2mm	Elastomer (Soft) by DU PONT-TORAY	-
EL4HD22	Triangle	2.2mm	Elastomer (Hard) by DU PONT-TORAY	-
EL8ST10	Triangle	1.0mm	Elastomer (Soft) by DU PONT-TORAY	-
EL8HD10	Triangle	1.0mm	Elastomer (Hard) by DU PONT-TORAY	-
EL17ST10	Teardrop	1.0mm	Elastomer (Soft) by DU PONT-TORAY	-
EL17HD10	Teardrop	1.0mm	Elastomer (Hard) by DU PONT-TORAY	-



ULTEM™ Picks

Model	Shape	Thickness	Material	Color
UL8T	Triangle	Thin (0.6mm)	Ultem™	-
UL8M	Triangle	Medium (0.8mm)	Ultem™	-
UL17M	Teardrop	Medium (0.8mm)	Ultem™	-
UL17H	Teardrop	Heavy (1.0mm)	Ultem™	-

Thumb Picks

Model	Shape	Thickness	Material	Color
UL22M	Medium	-	Ultem™	-
UL22L	Large	-	Ultem™	-

Standard Series

Model	Shape	Thickness	Material	Color
CE4T	Triangle	Thin (0.5mm)	Celluloid	BK/PL/CTS/RBW/MSC
CE4M	Triangle	Medium (0.7mm)	Celluloid	BK/PL/CTS/RBW/MSC
CE4H	Triangle	Heavy (0.9mm)	Celluloid	BK/PL/CTS/RBW/MSC
CE14M	Teardrop	Medium (0.7mm)	Celluloid	BK/PL/CTS/RBW/MSC
CE14H	Teardrop	Heavy (0.9mm)	Celluloid	BK/PL/CTS/RBW/MSC
CE16M	Short Teardrop	Medium (0.7mm)	Celluloid	BK/PL/CTS/RBW/MSC
CE16H	Short Teardrop	Heavy (0.9mm)	Celluloid	BK/PL/CTS/RBW/MSC
PM14T	Teardrop	Thin (0.5mm)	POM	BK/WH/BL/RD/VL
PM14M	Teardrop	Medium (0.75mm)	POM	BK/WH/BL/RD/VL
PM14H	Teardrop	Heavy (1.0mm)	POM	BK/WH/BL/RD/VL
PM14X	Teardrop	Extra Heavy (1.2mm)	POM	BK/WH/BL/RD/VL



GRIP WIZARD Series

Rubber Grip Picks

Model	Shape	Thickness	Material	Color
PA16MR	Short Teardrop	Medium (0.8mm)	Polyacetal	BK/BL/RD/WH
PA16HR	Short Teardrop	Heavy (1.0mm)	Polyacetal	BK/BL/RD/WH
PA16XR	Short Teardrop	Extra Heavy (1.2mm)	Polyacetal	BK/BL/RD/WH

Sand Grip Picks

Model	Shape	Thickness	Material	Color
PA16MS	Short Teardrop	Medium (0.8mm)	Polyacetal	BK/BL/RD/WH
PA16HS	Short Teardrop	Heavy (1.0mm)	Polyacetal	BK/BL/RD/WH
PA16XS	Short Teardrop	Extra Heavy (1.2mm)	Polyacetal	BK/BL/RD/WH

Grip Wizard Duo Picks

Model	Shape	Thickness	Material	Color
ST16HSR	Short Teardrop	Heavy (1.0mm)	Celluloid	BK1/BK2/BK3



Signature Models

Steve Vai

Model	Shape	Thickness	Material	Color
1000SVBR	Teardrop	Heavy (1.0mm)	Polyacetal	BR
1000SVGR	Teardrop	Heavy (1.0mm)	Polyacetal	GR
1000SVMP	Teardrop	Heavy (1.0mm)	Polyacetal	MP
1000SVWHR	Teardrop	Heavy (1.0mm)	Polyacetal featuring "Rubber Grip"	WHR



Paul Gilbert

Model	Shape	Thickness	Material	Color
1000PGBK	Short Teardrop	Heavy (1.0mm)	Celluloid	BK
1000PGCA	Short Teardrop	Heavy (1.0mm)	PVC	CA
1000PGJB	Short Teardrop	Heavy (1.0mm)	Celluloid	JB
1000PGPW	Short Teardrop	Heavy (1.0mm)	Celluloid	PW
1000PGWH	Short Teardrop	Heavy (1.0mm)	Celluloid	WH



The Offspring

Model	Shape	Thickness	Material	Color
OS-BL	Teardrop	Heavy (1.0mm)	PVC	BL
OS-RD	Teardrop	Heavy (1.0mm)	PVC	RD
OS-BK	Teardrop	Heavy (1.0mm)	Celluloid	BK



George Benson

Model	Shape	Thickness	Material	Color
1100GB	Teardrop	Medium (0.75mm)	Celluloid	-



John Scofield

Model	Shape	Thickness	Material	Color
1000JS	Teardrop	Heavy (1.0mm)	PVC	-



Kiko Loureiro

NEW

Model	Shape	Thickness	Material	Color
1000KLBK	Teardrop	Extra Heavy (1.2mm)	Polyacetal	BK
1000KLRD	Teardrop	Extra Heavy (1.2mm)	Polyacetal	RD
1000KLWH	Teardrop	Extra Heavy (1.2mm)	Polyacetal	WH



Strings

Electric Guitar Strings

Model	Type	Description	Gauge
IEGS6	Nickel Wound	6 String / Super Light	.009/.011/.016/.024/.032/.042
IEGS61	Nickel Wound	6 String / Regular Light	.010/.013/.017/.026/.036/.046
IEGS61MK	Nickel Wound	6 String / for Ibanez miKro-22.2" scale	.010/.013/.017/.026/.036/.046
IEGS7	Nickel Wound	7 String / Super Light	.009/.011/.016/.024/.032/.042/.054
IEGS71	Nickel Wound	7 String / Regular Light	.010/.013/.017/.026/.036/.046/.059
IEGS8	Nickel Wound	8 String / Super Light	.009/.011/.016/.024/.032/.042/.054/.065
IEGS81	Nickel Wound	8 String / Regular Light Top	.010/.013/.017/.030/.042/.054/.064/.074
IEGS82	Nickel Wound	8 String / Super Light Top for long scale	.009/.011/.016/.026/.036/.046/.052/.070
IEGS9	Nickel Wound	9 String / Super Light for long scale	.009/.011/.016/.024/.032/.042/.054/.075/.090

Electric Guitar Strings-ARTCORE

Model	Type	Description	Gauge
IEGS62	Nickel Wound	6 String/for Semi Hollow Bodies / light top heavy bottom	.010/.013/.017/.030/.042/.052
IFAS6SL	Stainless Flat Wound	6 String/for Full-Hollow Bodies / Jazz Light Gauge	.011/.015/.022/.030/.040/.050

Electric Bass Strings (Coated)

Model	Type	Description	Gauge	Notes
IEBS4XC NEW	Nickel Wound	4 String / light top medium bottom	.045/.065/.085/.105	CARBON X-COATED
IEBS4C	Nickel Wound	4 String / light top medium bottom	.045/.065/.085/.105	COATED
IEBS4CMK	Nickel Wound	4 String / for Ibanez miKro-28.6" scale	.045/.065/.085/.105	COATED
IEBS5C	Nickel Wound	5 String / light top medium bottom	.045/.065/.085/.105/.130	COATED
IEBS6C	Nickel Wound	6 String / light top medium bottom	.032/.045/.065/.085/.105/.130	COATED

Acoustic Guitar Strings (Coated)

Model	Type	Description	Gauge	Notes
IPCS6C NEW	80/20 Bronze	6 String / Extra Light	.010/.014/.023/.030/.039/.047	COATED
IACS6C	80/20 Bronze	6 String / Light	.012/.016/.024/.032/.042/.053	COATED
IACS12C	80/20 Bronze	12 String / Light	.010/.010/.014/.014/.023/.008/.030/.012/.039/.018/.047/.027	COATED

Acoustic Bass Strings (Coated)

Model	Type	Description	Gauge	Notes
IABS4XC NEW	80/20 Bronze	4 String	.040/.060/.075/.095	CARBON X-COATED
IABS4C	80/20 Bronze	4 String	.040/.060/.075/.095	COATED
IABS4C32	80/20 Bronze	4 String / for 32" scale	.040/.060/.075/.095	COATED

Nylon Strings

Model	Type	Description	Gauge
ICLS6NT	Clear Nylon & Silver Plated Wound	6 String / Normal tension	.0280/.0322/.0403/.029/.035/.043
ICLS6HT	Clear Nylon & Silver Plated Wound	6 String / Hard tension	.0285/.0327/.0410/.030/.036/.044

Ukulele Strings

Model	Type	Description	Gauge
IUKS4	Black Nylon	4 String / Soprano, Concert	.025/.032/.036/.028
NBUKS4 NEW	Black Nylon manufactured by Aquila Strings®	4 String / Soprano, Concert	.024/.032/.037/.026

Mandolin Strings

Model	Type	Description	Gauge
IMDS4	80/20 Bronze	8 String	.010/.014/.024/.034

Banjo Strings

Model	Type	Description	Gauge
IBJS5	Nickel Wound	5 String	.010/.012/.016/.023/.010



Accessories & Tools

POWERPAD® Guitar Work Station

Model	Description
GWS100	POWERPAD® Guitar Work Station Standard size



POWERPAD® Tool Case

Model	Description
ITC32	POWERPAD® Tool Case, 200 x 100 x 45(mm)



Multi Tool

Model	Description
MTZ11	11 tools, 94 x 35 x 32(mm)



String Winder

Model	Description
ISW10	String Winder



Prestige Guitar Cloth

Model	Description
PGC1000	SHINETEX Microfiber, 240x240(mm)



Fret Cleaner

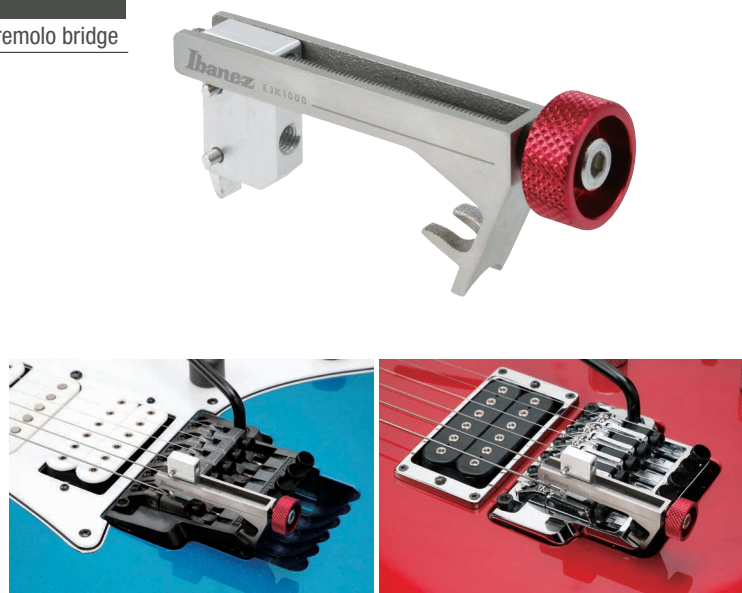
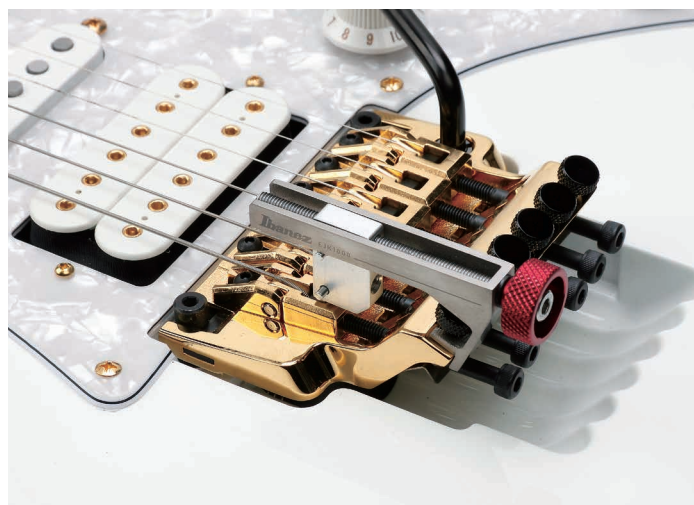
Model	Description
IFC1000	Fret Shine & Brush Set



Intonation Adjuster

NEW

Model	Description
EJK1000	E-JACK Intonation Adjuster for Edge, Lo-Pro Edge, Edge-Pro tremolo bridge



Tremolo Spring

NEW

Model	Description
ESPR1003	E-SPRING Teflon Plated Edge Tremolo Spring x 3pcs
ESPR2003	E-POWER SPRING Teflon Plated Edge Tremolo Spring x 3pcs



ESPR1003



ESPR2003

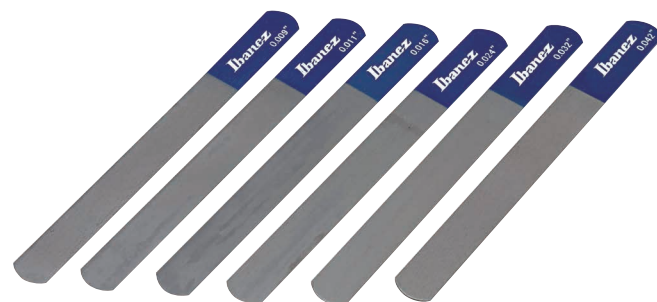
Prestige Fret File

Model	Description
4450J	for Jumbo fret
4450L	for Large fret
4450S	for Small fret
4451	Fret File / 3pc Set



Prestige Nut File Set

Model	Description
4449EG6	for El.Guitar (.009/.011/.016/.024/.032/.042)
4449EG61	for El.Guitar (.010/.013/.017/.026/.036/.046)
4449EB6	for El.Bass (.032/.045/.065/.085/.105/.130)
4449AC6	for Ac.Guitar (.012/.016/.024/.032/.042/.053)
4449CG6	for Cl.Guitar (.028/.032/.040/.029/.035/.042)
4449EG4EX	for 7/8/9 String El.Guitar (.054/.065/.075/.090)
4449UC4	for Ukulele (.025/.032/.036/.028)



Tremolo Arm

Model	Description
UTA20	Ultralite Tremolo Arm™

- Carbon Graphite Arm Grip
- Light, durable & thicker arm grip for increased tremolo arm control
- For Edge / Lo-Pro Edge / Edge-Pro / Edge Zero / SynchroniZR / ZR-2 bridges



Capo

Model	Description
IGC10	Guitar Capo
IUC10	Ukulele Capo
IGCZ10	Guitar Capo
IGCZ20	Guitar Capo



IGC10



IUC10



IGCZ20



IGCZ10

Finger Trainer

Model	Description
IFT10	Finger Training Tool



Music Stand Clip Light

Model	Description
IML21	Clip LED Light



Foot Rest

Model	Description
IFR50M	Metal Guitar Footrest
IFR100W	Wooden Guitar Footrest



IFR50M



IFR100W

Guitarist Throne

Model	Description
IMC50FS	Foldable Throne with guitar stand function
ICC50FFR	Foldable Throne with foot rest & carrier bag



IMC50FS



ICC50FFR

