

Wilderness camping is permitted but no camping facilities are provided.

## Camping

Deer are found throughout Akatarawa Forest, mostly in heavy bush. Goats and pigs can be found at low altitudes in more open country. Collect a map and permit to hunt in the designated indigenous forest from our Upper Hutt office.

## Hunting

All casual trailbikers must have individual permits. These are available from Greater Wellington's Upper Hutt office. A large area of the Akatarawa Forest is ecologically sensitive. To avoid the spread of weeds and damage to the forest, trailbiking is only permitted on designated roads, tracks and routes. Do not exceed 30kph in the forest. Casual off-road racing, scrambling, motorcross and competitive riding are not permitted.

## Trailbiking

4WD trips are allowed into the Akatarawa Forest. GW runs a permit system for 4WD clubs on designated tracks. For safety and environmental reasons, no private 4WD vehicles

## 4WD vehicles

The best access points to the forest are via Maungakotukutuku Valley and Battle Hill Farm Forest Park. The Karapoti Gorge is heavily used by trail bikers so we do not recommend horseriding there.

## Horseriding

From Karapoti Gorge entrance it's a 6km ride through the gorge before turning hard left over a concrete bridge. Climb up McGhies Rd then head left up Valley View Rd. At the ridge crest continue up Valley View Rd on to Airstrip Rd for 2km before turning right onto Woolshed Road to go back down to the concrete bridge.

## Karapoti Challenge

(20km return, 1.5-2 hours, intermediate) From Karapoti Gorge entrance it's a 6km ride through the gorge before turning hard left over a concrete bridge. Climb up McGhies Rd then head left up Valley View Rd. At the ridge crest continue up Valley View Rd on to Airstrip Rd for 2km before turning right onto Woolshed Road to go back down to the concrete bridge.

## Cannon Point Walkway

(3-4 hours, moderate) From Bridge Road the track follows the pipeline to the historic Birchville Dam then up to Cannon Point, giving panoramic views of the Hutt Valley. Return via Tulsa Grove and along the banks of the Hutt River.

## Tracks and trails



# Akatarawa Forest

The Akatarawa Forest has a 5-day ranger service, including horse riding, please contact the Park Ranger on 027 248 1658.

## Ranger service

- Take your rubbish home and recycle it where possible
- Do not remove, disturb or damage native plants or animals
- Light no fires. You may use a portable gas stove
- Keep your dog under control at all times and remove droppings
- Bury toilet waste away from streams and rivers
- Beware of poisonous possum bait. Do not remove warning notices, or disturb baits, lures or carcasses

## Please take care of your forest

- Take extreme care on all tracks and routes. They are used by logging trucks, 4WDs and trail bikes, as well as trampers, mountain bikers and horse riders. Some are not signposted or maintained. There is no cellphone coverage in the forest.
- Check the weather forecast before your trip
- Leave your intentions with someone
- Keep to marked tracks unless you know the area
- Take a copy of NZMS260 map 26 and a compass
- Take adequate warm waterproof clothing and food
- Forest operational areas are closed during harvest times

## Stay safe

Starting from Karapoti Road, the track narrows through a bush-clad gorge to McGhies Bridge and on to a clearing by the river. Enjoy a dip in one of several deep pools.

## Karapoti Gorge

(3 hours return, easy) Starting from Karapoti Road, the track narrows through a bush-clad gorge to McGhies Bridge and on to a clearing by the river. Enjoy a dip in one of several deep pools.

## Karapoti Classic

(50km return, 4-8 hours, advanced only) Ride up Karapoti Gorge past McGhies Bridge to a clearing where the road forks. Veer right over a gate and head northeast. You reach a stream at the foot of a hill and follow it to the right a short way before rejoining the track. After a steep climb turn left towards Deadwood at the T-junction. Follow the ridge for 5km before turning hard left down a gravel track to the stream. Another steep climb leads to Titi Road. Turn left into Whakaiti Road and down to Dopers Creek. Climb steeply again over the Pram Track and down to the ford at Akatarawa River West. Return to Akatarawa Road.

Timetables and fares – [www.metlink.org.nz](http://www.metlink.org.nz)

## PUBLIC TRANSPORT:

Take the 111 bus from Upper Hutt Railway Station (Mon-Sat) to Totara Park Entrance.

**Totara Park**  
Via Tulsa Park or Valley View Rd off Totara Park Rd, Upper Hutt

**Maungakotukutuku Road**  
Via Waterfall Rd off SH1

**Karapoti Road**  
Via Akatarawa Road off SH2, Upper Hutt

**Bulls Run Road**  
Via Cooks Rd off Moonshine Rd from SH58

**Bridge Road**  
Via Akatarawa Rd off SH2, Upper Hutt

**Battle Hill Farm Forest Park**  
Via Paekakariki Hill Rd off SH58

## How to get there

### MAIN ENTRANCES:



## About the forest

Covering nearly 15,500 hectares between Upper Hutt and the Kapiti Coast, the Akatarawa Forest is a mix of native and exotic forest broken by steep valleys and river gorges.

There are two known translations of the name "Akataarawa" – "trailing vines" or "vine of the Tarawa". Māori used the forest for hunting and food gathering, as well as an access trail between the Hutt Valley and Kapiti Coast.

The indigenous forest was significantly changed following European settlement through introducing animals, fires and logging native timber.

During 1900-20 many families associated with logging and sawmilling moved into the Akatarawa area. Access was via Karapoti Road, which was formed in 1911 as a tram track with wooden rails. Today you can still see old tram lines, trucks and discarded machinery in the forest.

In 1919 the State Forest Service acquired 2,228 acres and established Akatarawa State Forest No 26. This was vested in the Wellington City and Suburban Water Supply Board – a predecessor of the Greater Wellington Regional Council. Log and timber sales offset the cost of supplying water to the growing cities.



The forest has a long shared use with outdoor recreation. Trampers in 1948 used a logging access route along McGhies Road to gain views over the forest-clad west Akatarawa River valley.

Today Greater Wellington still balances the needs of the forest as a future water supply area, source of timber and a place of recreational wilderness for 4WD clubs, trailbiking, tramping, hunting and mountain biking. The forest is the venue for the internationally renowned Karapoti Classic mountain bike ride.



[www.gw.govt.nz/parks](http://www.gw.govt.nz/parks)



greater WELLINGTON  
REGIONAL COUNCIL  
Te Pane Matua Taiao

For more information, contact Greater Wellington's Parks department

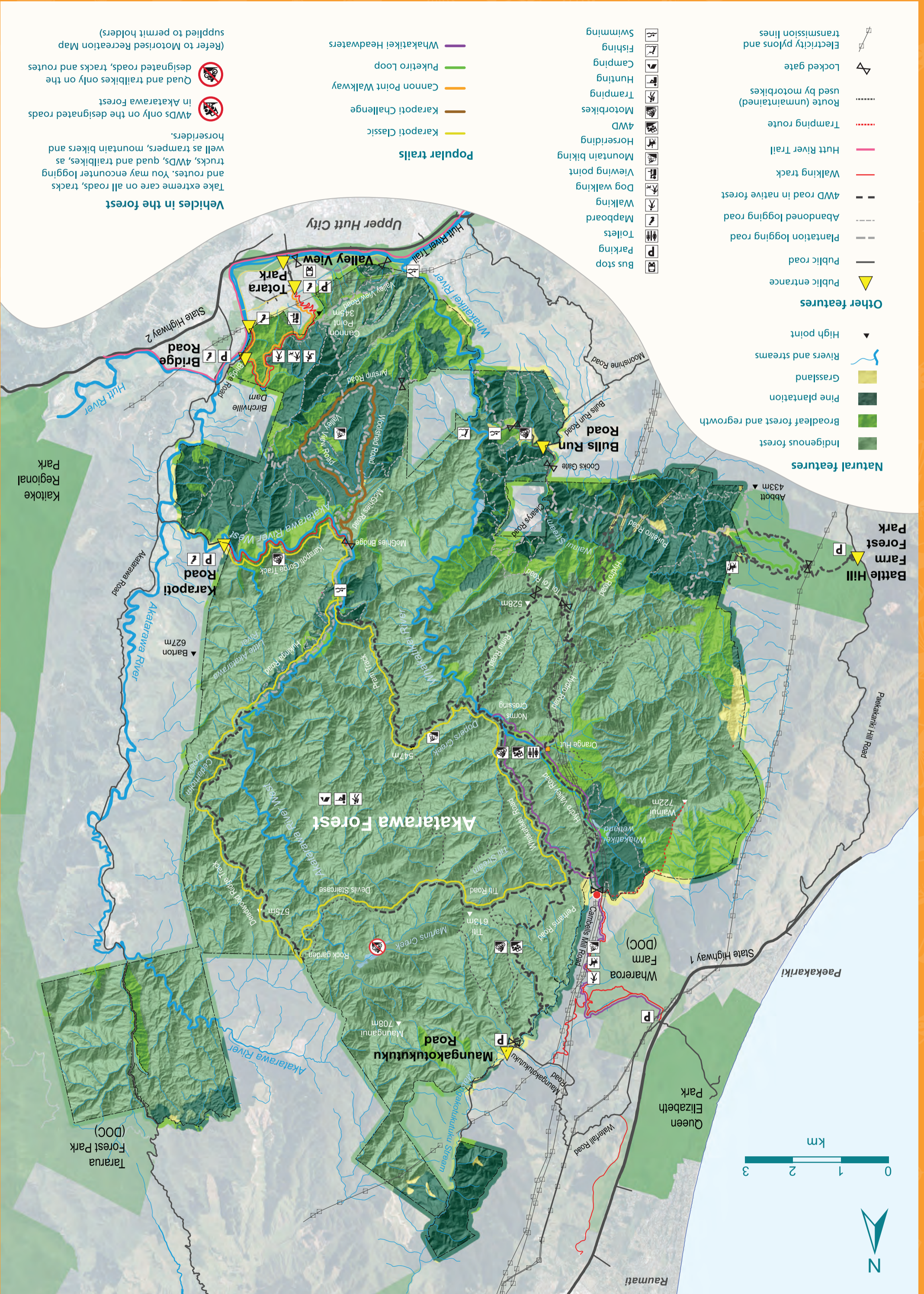
**Upper Hutt office**  
1056 Fergusson Drive  
PO Box 40847  
Upper Hutt 5140  
T 04 526 4133  
F 04 526 4171  
parks@gw.govt.nz

**Wellington office**  
142 Wakefield Street  
Wellington 6011  
PO Box 11646  
Wellington 6142  
T 04 384 5708  
F 04 385 6960  
parks@gw.govt.nz

**Akatarawa Forest Ranger**  
027 248 1658

December 2017  
GWPK-G-17/15





**Natural features**

- Indigenous forest
- Broadleaf forest and regrowth
- Pine plantation
- Grassland
- Rivers and streams
- High point
- Public entrance
- Public road
- Abandoned logging road
- Plantation logging road
- 4WD road in native forest
- Walking track
- Hutt River Trail
- Tramping route
- Route (unmaintained) used by motorbikes
- Locked gate
- Electricity pylons and transmission lines

- Bus stop
- Parking
- Toilets
- Mapboard
- Walking
- Dog walking
- Viewing point
- Mountain biking
- Horsing
- 4WD
- Motorbikes
- Tramping
- Hunting
- Camping
- Fishing
- Swimming

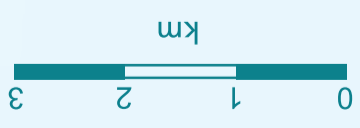
**Popular trails**

- Karapoti Classic
- Karapoti Challenge
- Cannon Point Walkway
- Puketiro Loop
- Whakatikei Headwaters

**Vehicles in the forest**

Take extreme care on all roads, tracks and routes. You may encounter logging trucks, 4WDs, quad and trailbikes, as well as trampers, mountain bikers and horse riders.

- 4WDs only on the designated roads in Akatarawa Forest
- Quad and trailbikes only on the designated roads, tracks and routes (Refer to Motorised Recreation Map supplied to permit holders)



Battle Hill Farm Forest Park

Paekakariki

Whareroa Farm (DOC)

Queen Elizabeth Park

Raunui

Akatarawa Forest

Maungakotukutuku Road

Karapoti Road

Bridge Road

Valley View Park

Totara Park

Upper Hutt City

Kaitoke Regional Park

Tararua Forest Park (DOC)

Akatarawa River

Hutt River

Whakatikei River

Wainui Wetland

Orange Hut

Norms Crossing

Maungakotukutuku Stream

Maungakotukutuku

Maungakotukutuku

Maungakotukutuku

Maungakotukutuku

Maungakotukutuku

Maungakotukutuku

Maungakotukutuku

Maungakotukutuku

Maungakotukutuku

Maungakotukutuku

Maungakotukutuku

Maungakotukutuku

Maungakotukutuku

Maungakotukutuku

Maungakotukutuku

Maungakotukutuku

Maungakotukutuku

Maungakotukutuku

Maungakotukutuku

Maungakotukutuku

Maungakotukutuku

Maungakotukutuku

Maungakotukutuku

Maungakotukutuku

Maungakotukutuku

Maungakotukutuku

Maungakotukutuku

Maungakotukutuku

Maungakotukutuku

Maungakotukutuku

Maungakotukutuku

Maungakotukutuku

Maungakotukutuku

Maungakotukutuku