



AUSTRALIAN WOMEN'S ICE HOCKEY LEAGUE (AWIHL)

REGULATIONS

For the latest AWIHL Regulations please visit www.iha.org.au

Welcome to the Australian Women's Ice Hockey League (AWIHL)

The Australian Women's Ice Hockey League (AWIHL) is a national league commissioned by Ice Hockey Australia (IHA) to provide the highest level of competition played regularly by our female competitors.

The AWIHL is regulated by IHA through the AWIHL Commissioner who is appointed by the AWIHL Committee of Management and IHA.

The AWIHL Regulations are designed to assist coaches, players, managers, and team management committees who participate in the League.

IHA is the recognised governing body for ice hockey in Australia and is also affiliated with the Australian Olympic Committee (AOC), the Australian Sports Commission (ASC), and is an active member of the International Ice Hockey Federation (IIHF).

The AWIHL is conducted in accordance with IHA's and the AWIHL's governing regulations, including all IIHF's applicable regulations and game rules.

Contact IHA at office@iha.org.au

INTRODUCTION

The regulations include four sections:

- Section 1: Team Entry & Player / Officials Eligibility
- Section 2: Policies & Regulations
- Section 3: Playing Rules
- Section 4: Forms

Section 1: contains information for the Member State/Territory AWIHL Organising Committee hosting, preparing and conducting AWIHL games. It refers to all forms and information required by the AWIHL Organising Committee to ensure the League games operate smoothly and successfully.

Section 2: contains information specifically to ensure participants are completely informed on the policies and regulations for assurance that all aspects of the AWIHL are in compliance.

Section 3: contains information specifically to inform the local AWIHL Organiser and participating teams on the game rules of the AWIHL.

Section 4: contains copies of the forms used in regards to the staging, process and procedures for the AWIHL league and games.

These regulations are to be adhered to at all times. If prior to an AWIHL game a need arises to alter any part there-of, permission must be obtained from the AWIHL Commissioner. If during a series of AWIHL games a need arises to make changes, the AWIHL Commissioner or his/her delegated representative will have the power to authorise these changes, and only if competing teams are in agreement. No team is to be disadvantaged by these changes. The changes are to be discussed and voted on at the next annual AWIHL convened meeting and approved by IHA.

CONTENTS

SECTION 1

1.1	The Australian Women's Ice Hockey League (AWIHL)	5
1.2	Application to Compete	5
1.3	Application to Enter a Team	6
1.4	Player and Team Officials Eligibility	7
1.5	IHA Funding	9
1.6	Responsibilities	9
1.7	Application to Host the Finals series	9

SECTION 2

2.1	Member Code of Conduct and Ethics	11
2.2	Age Policy	12
2.3	Travelling Team Protocol: Players and Team Officials	12
2.4	IHA Anti-Doping Policy	12
2.5	AWIHL Game Formats	13
2.6	Disciplinary Tribunal Guidelines & Regulations Governing Suspensions	14
2.7	Suspension Penalty Schedule	15
2.8	Forfeiture	15

SECTION 3

3.1	Playing Rules	17
3.2	Play-off Determination	17
3.3	Overtime Rule	17
3.4	Statistics	17
3.5	Trophies and Awards	18
3.6	Damages	19
3.7	On-ice Official's Payment	19
3.8	Injury Reporting System	19

SECTION 4

AWIHL 01:	Team Entry Form	22
AWIHL 02:	Team Registration Form	23
AWIHL 03:	Team Officials Registration Form	24
AWIHL 04:	Game Report Form	25
AWIHL 05:	Application to Enter New Team Form	26
AWIHL 06:	AWIHL Commissioner Nomination Form	27
IHA Injury Report Form		28

SECTION 1

1.1 The Australian Women's Ice Hockey League (AWIHL)

1.1.1 The AWIHL is a league commissioned by IHA.

The AWIHL is conducted for the purpose of providing a consistent and continuous high level of competition for the advanced level female players in Australia and to support the aims of the National Women's Program in their international endeavours.

1.1.2 The AWIHL is not necessarily a competition for State teams (although they may, in fact, have rosters identical to the State team).

1.1.3 The AWIHL consists of players who are registered members with their respective IHA member state association. AWIHL players are part of AWIHL teams. An AWIHL "Team" must operate under the Associations Incorporations ACT of Australia, as well as be a current AWIHL affiliated member organisation of their respective IHA member state association or a IHA member team.

1.1.4 The AWIHL is administered by the AWIHL committee in co-operation with IHA. The committee will consist of the AWIHL Commissioner, a member from each AWIHL team, the IHA National Women's Director and an IHA Board member.

1.1.5 Each member of the AWIHL Committee will have one vote. If an email vote is required, the Commissioner shall give a 5 day deadline. If no vote is received from a committee member within 5 days it shall be noted as an affirmative vote.

1.1.6 AWIHL game allocations shall be confirmed by the AWIHL commissioner.

1.1.7 The host team club or State Association / Territory will ensure games are conducted in a safe playing environment.

1.1.8 The AWIHL Commissioner will be elected for a term of two years. Member Clubs may nominate a person for the role of Commissioner prior to 31 December on even numbered years (ie. 2020). An email vote will then take place by the member clubs with the IHA Women's Director holding the tie breaking vote if necessary. The successful candidate will then be put forward to IHA for ratification, upon IHA ratification they then take up their two year position at the conclusion of the AWIHL Finals. If the IHA Board does not accept the AWIHL candidate, a new ballot for Commissioner will take place. A role description for the AWIHL Commissioner can be found on page 25.

1.2 Competing in Australian Women's Ice Hockey League

1.2.1 Intention to compete in the AWIHL (Form AWIHL 01) must be lodged at the AWIHL Commissioners office no later than 15th April of each year.

1.2.2 Once supplied with an invoice, teams must pay to IHA the annual affiliation member fee.

1.2.3 Unless an alternative arrangement has been agreed, a bond of \$500 per team must be submitted with the application. Bond money may be used for the purpose of things like damages or forfeiture. The bond will be refunded at the end of the AWIHL season if neither of those incidents occur. Bonds are payable by direct deposit or cheque.

1.2.4 A Member who withdraws after confirmation of teams and league schedule has been published, will lose the bond payment and be prevented from entering a team in AWIHL for a period of one (1) year after withdrawal.

1.2.5 Failure to submit a squad including the team officials and applications for under-age players prior to October 1st will incur a penalty of \$200 payable to the AWIHL. If the fine is not paid, points for games won will be lost until the money has been paid in full.

1.2.6 The AWIHL committee will convene a meeting every 12 months prior to the commencement of the season, no later than 15th May. The host team will provide the venue and cover costs for the meeting. Visiting teams will provide their own flights to the host city. It is required that each team will be represented by a coach and an administrator to assist with communication of the National Women's Program aims and objectives.

1.2.7 All team jersey designs and changes must be approved by the AWIHL committee.

1.3 Application to enter a team in the Australian Women's Ice Hockey League

1.3.1 The process for application for the admission of a new team is:

- a) The applicant may make informal contact with the AWIHL Commissioner for an initial discussion about their proposal and the process and to request an application form;
- b) The applicant submits an application (AWIHL 05) to the Commissioner by January 31st, seeking admission to the league.
- c) The application will be referred to the AWIHL committee for discussion at the next annually convened meeting, and the applicant may be invited to present at that meeting;
- d) At that meeting, the AWIHL committee will assess the application based on any comments or report by the Commission, together with the principles outlined in the below assessment of applications. The committee then votes by simple majority to either:
 - i. approve the application with or without conditions; or
 - ii. reject the application, or
 - iii. respond in any other manner that the Teams judge appropriate

1.3.2 New teams must play exhibition games for a minimum of one season before being considered to enter the AWIHL. This in no way obligates the league to accept the new team's application.

1.3.3 Legal Personality: Applicant teams for admission to the League must have a separate legal personality (such as an incorporated association).

1.3.4 Assessment of Applications

In assessing applications for full membership of the league, the Commissioner and committee may have regard, without limitation, to the following matters:

- a) maintenance and improvement of the standard of the competition;
- b) the maturity and stability of the entity making the application, including governance, finance, sponsorship, and personnel;
- c) the availability and standard of players proposed for the applicant team;
- d) the continuing viability and growth of existing teams;
- e) additional travel costs for member teams;

- f) the applicant's access to appropriate and secure ice time at an appropriate standard venue;
- g) the views of member teams, state associations, and Ice Hockey Australia;
- h) the balance between growth of the League and appropriate limits on that growth; and
- i) any other matter that the Commissioner or committee considers relevant.

1.4 Player and Team Officials Eligibility

- 1.4.1 All AWIHL participating players and officials must be registered as full members of IHA (i.e. players must be M10 or M11 – summer league registrations are not sufficient).

Players are subject to IIHF transfer regulations which generally state that

- a) A player is a member of their country of birth.
- b) A transfer is required to play in another country (world championships excepted).
- c) A player can only be a member of one country at any time.

Refer to IHA and IIHF Transfer regulations for correct and up to date information.

- 1.4.2 Only those players and team officials as approved by the IHA Office, in writing, are eligible to participate in the AWIHL. Such approval will be requested by the AWIHL office from IHA within seven (7) days of receipt of the team roster.
- 1.4.3 Teams may be comprised of IHA registered players from any IHA Member State Association.
- 1.4.4 To meet the strategic objectives of the national women's program, each participating AWIHL team carries the responsibility of developing their own local player talent. Local players with the skill and capability to compete in the AWIHL must be given priority on their local AWIHL team roster. If there are any roster vacancies once all capable local players have been selected, then interstate players may be permitted to nominate for any open roster vacancies with other AWIHL teams.
- 1.4.5 Players must try out for a team in the state in which they reside. Any interstate players who were unsuccessful at their local AWIHL team tryouts may be considered for selection by another team if there are roster vacancies with other AWIHL teams. Players who want to play for another team must first obtain a release from the team in their state of residence (this includes those players who have moved interstate).
- 1.4.6 Imports must be shown on all official team and game report sheets indicated by the letter "I" next to their name. An import is a player who does not have Australian citizenship or permanent residency.

An exception to the AWIHL Import rule includes New Zealand residents who compete in the AWIHL as an import with an ITC for two (2) consecutive seasons. Following this New Zealand residents who continue to reside in Australia under the New Zealand/Australian Visa agreement can now compete as a regular player, not requiring to be classified as an import. The moment the player ceases to live permanently in Australia, they lose their "local" status, and must start the process over. Players eligible to play under this import exemption clause must apply to the AWIHL Commissioner with proof of their documentation for approval to play.

Details on transfers and fees can be found at www.iha.org.au/transfers

- 1.4.7 Teams may have a maximum of four (4) imports on the roster, however no more than three (3) players deemed as an “import” as defined by IHA, shall be permitted to play for a team in any one game. The team which placed last in the previous AWIHL season can play four (4) imports in any one game.
- 1.4.8 Import goaltenders shall not be permitted to play in the AWIHL. In order to support the National Women’s Team, all teams must have all goaltenders holding Australian citizenships.
- 1.4.9 To further support AWIHL goaltender development and provide adequate game experience, teams shall ensure that each tender on the roster receives not less than 25% of regular season game time.
- 1.4.10
- a) Teams must list a minimum of twelve (12) players on their roster sheet (10 players and 2 goaltenders).
 - b) Only females are eligible to play in AWIHL.
 - c) Teams with less than twelve (12) players (10 skaters and 2 goaltenders) at any AWIHL game will not be permitted to participate. This will constitute a forfeit by the offending team. Future points will not be awarded until all forfeit costs are paid in full.
 - d) Only persons as nominated on the Australian Women’s Ice Hockey League Team and Officials Registration Forms, and as approved to participate by the IHA, will be permitted on the players bench.
 - e) A player must play a minimum of six (6) league games to be eligible to compete in the AWIHL Finals series. A goaltender must have been listed on the game sheet a minimum of 6 times and have taken the ice in a minimum of 3 games. Back up goaltenders are to be marked on the game sheet as a ‘Yes’, regardless of having taken the ice or not.

If any player or goaltender does not meet the minimum number of games for any exceptional reason including, but not limited to, medical reasons, applications for special consideration to compete at Finals must be made within twenty four (24) hours of the last regular season’s game to the AWIHL committee for their consideration and determination. This player must have started the season or committed to the league, to be eligible for special considerations. The AWIHL committee’s decision is final.
 - f) Teams must present their final team roster for the AWIHL Finals series to the AWIHL Commissioner, 14 days prior to the finals weekend.
- 1.4.11 All team Coaches nominated to participate in the AWIHL must hold, as a minimum, a current IHA Level 1 Coaching Certificate. At least one coach on the team coaching panel must hold a IHA Level 2 Coaching Certificate. If no coaches currently on the panel hold a IHA Level 2, an 18 month grace period will be provided to allow for one of the coaches to gain the accreditation. The 18 month grace period commences from the date when the last Level 2 accredited coach left the team.
- 1.4.12 Team Officials will be appointed by each teams respective management committee.
- 1.4.13 A team allowing ineligible players and/or officials to participate in the AWIHL shall incur a penalty of \$300.00 per game payable to the AWIHL and the team will forfeit any points accrued at the time the breach is discovered.

1.4.14 Any team official or executive member of a team or club, who is party to, or had knowledge of, or intentionally adds an unregistered or ineligible player's name or unregistered team official or trainer's name to a game sheet for the purpose of competing in a game:

- a) Shall be suspended for a period of not less than two (2) years from playing or holding office with any AWIHL team; and
- b) Shall be reported to IHA.

1.4.15 Any player who falsifies a birth certificate, registration certificate or forges a signature and plays under an assumed name, or having knowledge that the same has been falsified, or playing on other than his/her own birth certificate shall be automatically excluded from playing in the AWIHL for a period of not less than one (1) year and not more than three (3) years from the date of exclusion and shall be reported to IHA.

1.5 IHA Funding

1.5.1 From time to time, the IHA board may choose to provide financial support to AWIHL teams. The net amount of any financial support provided must be directed to reducing the cost of player participation fees, specifically interstate flight costs and game ice fees.

1.5.2 When IHA funding is provided, team flight costs for away scheduled games will be subsidised only from the teams 'home' airport location, or a lower cost location.

1.5.3 IHA funding is not to be used to subsidize flight costs for any player to travel to the team's 'home' games.

1.6 Responsibilities

1.6.1 Responsibilities for the planning, procedures and processes of the AWIHL games are shared between the:

- i) AWIHL Commissioner;
- ii) AWIHL committee;
- iii) IHA RIC;
- iv) Host Team.

1.6.2 The AWIHL Commissioner must forward the AWIHL game schedule to the member teams by June 15th. Teams must confirm the availability of ice on their designated weekends by July 1st.

NOTE: When teams are booking ice for games, the first game of a series must be no earlier than 3pm on Saturday, and the Sunday game must end no later than 4pm. Additionally, there must be a minimum of 12 hours between games. Please note that daylight savings affects some states and this must be catered for in the game schedule.

The AWIHL Commissioner will approve these ice times and confirm schedule by July 14th. The AWIHL Commissioner will also provide the date for finals (regardless of location) by June 15th

1.7 Application to host the Finals Series

1.7.1 At each annually convened AWIHL committee meeting, teams will have the opportunity to nominate to host the upcoming season final series. For nominating teams, an AWIHL committee vote will immediately take place with the series being awarded to the team with most votes.

- 1.7.2 IHA will cover the costs of officials and trophies for Finals. A budget is to be sent to the Commissioner for approval, outlining all AWIHL Finals weekend costs, no later than two (2) months prior to finals.

SECTION 2

2.1 Member Code of Conduct and Ethics

As a registered individual member of IHA, all individuals agree to abide by IHA's Member Code of Conduct and Ethics. This Code of Conduct and Ethics applies to all IHA members, including players, coaches, officials, administrators, managers, office holders and employees.

As members of IHA, the participants are to adhere to the following requirements in regard to their conduct during any activity held by or under the auspices of IHA or a State or Territory Association and in any role they hold within IHA or a State or Territory Association or the AWIHL.

- Respect the rights, dignity and worth of others;
- Be fair, considerate and honest in all dealing with others;
- Be professional in, and accept responsibility for their actions;
- Make a commitment to providing quality service;
- Demonstrate a high degree of individual responsibility, especially when dealing with persons under 18 years of age, as your words and actions serve as examples;
- Be aware of and maintain an uncompromising adherence to IHA standards, Constitution, By-Laws and policies;
- Operate within the rules of the International Ice Hockey Federation;
- Understand their responsibility if they breach or are aware of any breaches of this Code of Conduct & Ethics;
- Do not use their involvement with IHA or State / Territory Association / AWIHL to promote their own beliefs, behaviors or practices where these are inconsistent with those of IHA and the State / Territory Association;
- Avoid unaccompanied and unobserved activities with persons under 18 years of age in accordance with IHA's Member Protection Policy;
- Refrain from any form of abuse towards others;
- Refrain from any form of harassment towards or discrimination of others;
- Provide a safe environment for the conduct of the activity;
- Show concern and caution towards others who may be ill or injured;
- Be a positive role model at all times.

2.2 Age Policy

2.2.1 The AWIHL is an “Open Age” competition with a minimum age of fourteen (14) years. The player’s age is taken from when the player turns 14. As soon as they turn 14, they are eligible to complete in the AWIHL commencing at any stage of the season. Finals eligibility still complies as per section 1.4.10 (e) of these Regulations.

2.3 Travelling Team Protocol: Players and Team Officials

2.3.1 In addition to IHA’s Member Code of Conduct and Ethics, and Member Protection Policy, the AWIHL strongly recommends all teams who are participating in away games to adhere to the following protocol:

- Three (3) Team Officials to be travelling with the team, one of which must be female.
- Team officials are not to be roomed with players under any circumstances.
- Under eighteen (18) players must be under the supervision of a team official at all times.
- It is recommended that under eighteen (18) players are “buddied up” with a senior player on the team (who is at least over 18) who will act as a mentor. This will help to build a strong team culture and also set expectations around player behaviour.
- It is strongly encouraged that prior to the commencement of the AWIHL season Team officials discuss this protocol with the players and parents of players who are under 18 years of age.

The above protocol is to protect the interests of players and team officials. It is designed to minimise risks associated with working in close proximity with under eighteen (18) players but also providing an environment where both players and team officials feel comfortable and safe.

2.4 IHA Anti-Doping Policy

2.4.1 As a member of the ASC, the AOC and the IIHF, IHA condemns the use of performance enhancing drugs and doping practices in the sport of ice hockey. The use of performance enhancing drugs and doping practices is contrary to the ethics of sport and potentially harmful to the health of athletes.

IHA, through the assistance of its State and Territory Associations, aims to stop doping practices in sport by:

- a) Imposing effective sanctions on persons who commit doping offences;
- b) Educating and informing persons about drugs in sport issues; and
- c) Supporting the drug testing programs and education initiatives of ASDA, WADA and other world drug testing authorities.

2.4.2 AWIHL fully supports the IHA Anti-Doping Policy and will conform to IHA’s requirements.

2.4.3 Players taking prescribed medication must submit the Therapeutic Use Exemptions (TUE) form to the IHA office with the Team’s Registration Form verifying that the medication is necessary for health reasons.

2.4.4 The Anti-Doping Policy applies to all members of IHA, including players, officials, administrators, coaches, referees, office holders and employees.

2.4.5 The Australian Sports Anti Drug Agency (ASADA) is the National Drug Testing Authority empowered to conduct testing on athletes for the detection of prohibited substances. Testing is normally aimed at athletes competing at national and international levels and can be conducted during or out-of-competition at any time.

2.4.6 The following constitutes anti-doping rule violations:

The presence of a Prohibited Substance or its Metabolites or Markers in an athlete's bodily specimen;

a) Use or attempted use of a Prohibited Substance or Prohibited Method;

b) Refusing, or failing without compelling justification, to submit to Sample collection after authorised notification or evading Sample collection;

c) Violation of the requirements regarding athlete availability for Out-of-Competition Testing including failure to provide required whereabouts information;

d) Tampering or attempting to tamper with any part of Doping Control;

e) Possession of Prohibited Substances and Methods unless granted a Therapeutic Use Exemption;

f) Trafficking in any Prohibited Substance or Prohibited Method; and

g) Administration or attempted administration of a Prohibited Substance or Prohibited Method to any athlete, or assisting, encouraging, aiding, abetting, covering up or any other complicity involving an anti-doping rule violation or any attempted violation.

2.4.7 The IHA' Anti-Doping Policy is aligned with the Australian Sports Anti Drug Agency (ASADA). The Prohibited List is available on www.asada.gov.au

2.4.8 Given the complexity of this issue, it is recommended that all members obtain a copy of the prohibited list and seek the advice of their doctor before taking any substance. The ASADA Code includes the process for seeking exemptions for therapeutic reasons. If this is likely to affect the participant, they should become familiar with the exemption process.

2.4.9 All rostered players must complete the ASADA elearning Level 1 Anti-Doping module before they play their first AWIHL game. Teams must submit proof by way of attendance sheet to the AWIHL Commissioner that the module has been completed. The module is available via ASADA's elearning website: <https://elearning.asada.gov.au/>

2.4.10 IHA Members are also informed that the WADA and ASADA have implemented Out-of-Competition Testing.

2.5 AWIHL Game Formats

i) The AWIHL is a women's competition open to female players aged fourteen (14) years and over.

ii) The AWIHL season will consist of twelve (12) games for each team plus finals.

iii) Each team will compete in two (2) games per each scheduled weekend.

iv) The host team will be the designated Home Team for both games.

- v) Games are to consist of three (3), twenty (20) minute stop-time periods.
- vi) Teams are to be allowed a minimum of five (5) minutes warm-up before each game.
- vii) An ice resurface will take place between the 2nd and 3rd periods, and time permitting, between the 1st and 2nd periods. If no ice resurface occurs between 1st and 2nd periods a minimum two (2) minute break takes place.
- viii) Each team will be allowed one time out (lasting 30 seconds) during regulation time.
- ix) There will be no over-time played in regular season games.
- x) In the event of a tie after regulation time in a regular season game, a Penalty-Shot Shootout will be used to determine the winner. The conditions in Rule 63 of the IIHF Official Rule Book will apply with the following exceptions:
 - a) Rule 63(ii) will not take place.
 - b) Rule 63(iii) does not apply and is replaced with "The home team will have the choice to shoot first or second".
- xi) In the event of a tie after regulation time in a regular season game, a Game Winning Shots Procedure (shootout) will be played to decide the winner. The home team will have the choice to shoot first or second. If no time is available for a shootout, a tie will be declared.
- xii) Championship points will be applied as follows:
 - win = three (3) points
 - shootout win = two (2) points
 - shootout loss = one (1) point
 - tie = one (1) point
 - loss = zero (0) points

2.6 Disciplinary Tribunal Guidelines and Regulations Governing Suspensions

- 2.6.1 It is the responsibility of the team officials to obtain the final game report after each and every game to ensure a player and/or team official is not under report for suspension. Failure to do so does not constitute not being informed.
- 2.6.2 Penalties that constitute suspension from further play are to be applied as per the IHA's Suspension Penalty Schedule. If a tribunal is required, the tribunal shall be conducted in accordance with the IHA Constitution and By-Laws. Refer Clause 2.8 of this document and IHA's Tribunal and Suspension Regulations.
- 2.6.3 In the event that a tribunal is required, the State Association where the relevant incident(s) occurred will be the location for the tribunal.
- 2.6.4 The Tribunal Panel will consist of the Tribunal Chairperson and two independent persons nominated by the Chairperson. The Tribunal Chairperson will be the AWIHL Commissioner or a person nominated by him/her.
- 2.6.5 The tribunal shall be held as soon as practical after the game when the incident was cited and prior to the commencement of the next game of the charged player's team.
- 2.6.6 It shall be the responsibility of the Tribunal Chairperson to view all evidence and have all necessary witnesses, including the game referee, present at the appointed time and place for the tribunal.
- 2.6.7 Referees making reports against teams, officials or players arising out of a game at which they have officiated must:

- a. Ensure the incident is recorded on the Official Game Sheet. This should be done immediately at the end of the game in which the alleged offence occurred, prior to handing the Official Game Sheet to the Official Game Scorer and the AWIHL Host Organiser.
- b. At the conclusion of the game, the AWIHL Host Organiser and the Official Game Scorer must advise both team managers of the names of any players or officials who have received an automatic suspension or are to be cited before a Tribunal.
- c. Immediately following the game and leaving the ice, the AWIHL Host Organiser, Game Scorer and Game Referee must complete all relevant reports as annexed in the IHA's Tribunal Guidelines.
- d. Once a report has been posted by the Game Referee, it cannot be withdrawn.
- e. It shall be the responsibility of the charged or reported person or appropriate officials of the player's team, to collect all supporting documentation (e.g. details of the charge or report) prior to leaving the venue. In the event that this is not possible, these documents will be available from the Tribunal Chairperson.

2.7 Suspension Penalty Schedule

- 2.7.1 The IHA Suspension Schedule for penalties awarded in AWIHL games is to be applied by the AWIHL governing body.
- 2.7.2 Where a player receives a match penalty by the game referee for one of the offences listed in the IHA Suspension Schedule, the corresponding Automatic Suspension shall apply without the need to refer the matter to a Tribunal.
- 2.7.3 At the same time, the application of an automatic suspension does not remove the right of the player to request the matter be referred to a Tribunal if they disagree with the decision. Where "Tribunal" is listed against an offence, then the matter must go before a Tribunal for decision regardless.
- 2.7.4 A suspension must be served in a league of at least equal to (or higher) caliber than the one in which the infraction took place. Therefore, if a player is given a suspension for an AWIHL infraction, the suspension must be served by the player missing her next AWIHL or National Women's Team games.

The player is not to participate in any other IHA sanctioned games (including games in other divisions) until the penalty is served.

Penalties awarded at an AWIHL game, which are not fully executed during the AWIHL season, are to carry over into the corresponding league/division in the player's home state until the number of games awarded is served

- 2.7.5 Suspension compliance must be verified by submission of the game sheets to the League Commissioner, IHA Office and IHA RIC in which the suspension has been served.

2.8 Forfeiture

- 2.8.1 In the event of a game or games being cancelled after the AWIHL schedule has been confirmed, a forfeit will be declared by the AWIHL Commissioner. The team at the cause of the cancellation may be charged a forfeiture fee.

- 2.8.2 The forfeiture fee will include all reasonable costs (and/or potential lost revenue) incurred by the opposition team. This may include airfares, accommodation, ground transport, and other costs. The fee will be paid to the AWIHL office for distribution by the AWIHL Commissioner.
- 2.8.3 A forfeit will not be declared if the game cancellations are caused by an incident out of the control of the member teams.
- 2.8.4 If a forfeit is declared, the team that does not cause the forfeit shall receive the maximum points permitted for that game(s).

SECTION 3

3.1 Playing Rules

- 3.1.1 All AWIHL games will comply with the current International Ice Hockey Federation Official Rule Book as adopted by the IIHF Congress.

3.2 Play-off Determination

- 3.2.1 Playoff position will be determined at the end of the regular season games. If any teams are tied for points at the end of the regular season, the outcome of the games played between them will be the decider. If teams are still tied, the least goals against for the games played between them will be the decider. If still tied, the least goals against for the entire season will be the decider. The team positioned highest on the points table at the end of the regular season will be the "home" team in finals games.

- 3.2.2 Playoff games on AWIHL finals weekend will be conducted as follows:

Semi Final 1 (SF-1) will be between the team with the most points and the team with the 4th most of points earned during the regular season. (i.e. 1 vs 4)

Semi Final 2 (SF-2) will be between the team with the 2nd most points and the team with the 3rd most points earned during the regular season. (i.e. 2 vs 3)

The Bronze Medal Game will be between the losing team of SF-1 and the losing team of SF-2.

The Gold Medal Game will be between the winning team of SF-1 and winning team of SF-2.

3.3 Overtime rule

- 3.3.1 Overtime will not be played in any regular season games.

In the event of a tie after regulation time in games on Finals weekend, a ten (10) minute stop time overtime period will be played in accordance with the IIHF Rule Book.

- 3.3.2 The overtime period will be played at a numerical strength of three (3) skaters and one (1) goalkeeper. The IIHF Sport Regulations will apply in respect to penalties being served during an overtime period.

3.4 Statistics

- 3.4.1 In line with IHA policy, all schedules, results and statistics will be maintained on the eSportsdesk AWIHL site.

- 3.4.2 The following statistics are to be kept for all AWIHL games:

- i) game results,
- ii) team standings,
- iii) point scorers,
- iv) goalkeeper statistics, ie.
 - a) Save % - (Total Shots minus Goals) divided by (Total Shots),
 - b) G.A.A. - (Total Goals) divided by (Total Minutes Played), and
- v) penalty minutes.

3.4.3 Goalkeepers must play a minimum of one hundred & twenty (120) minutes to be eligible for an award. Players must play a minimum of six (6) games to be eligible for an award.

3.5 Trophies and Awards

3.5.1 IHA will supply the following awards/medals as per Section 18 of the IHA Sports Regulations :

- i) The Joan McKowen Memorial (JMK) Trophy – A JMK “Keeper trophy” Will be presented to the Winning AWIHL Finals Team.
- ii) The original trophy will be inscribed and retained in the IHA Office.
- iii) Every participating player and team official on the roster of the team which wins the Grand Final will receive a Gold Medal;
- iv) Every participating player and team official on the roster of the team which loses the Grand Final will receive a Silver Medal.
- v) Every participating player and team official on the roster of the team which wins the Bronze Medal Game will receive a Bronze Medal.
- vi) An award will be presented for Highest Points Scorer in the regular season.
- vii) An award for the League’s Best Forward will be voted on by a representative of each team using a 3, 2, 1 points system. A tie will then go to a re-vote on those players only.
- viii) An award for the League’s Best Defender will be voted on by a representative of each team using a 3, 2, 1 points system. A tie will then go to a re-vote on those players only.
- ix) An award for the League’s Top Goalkeeper will be voted on by a representative of each team using a 3, 2, 1 points system. A tie will then go to a re-vote on those players only.
- x) Nellie Gee Award – To be presented annually to the “Rookie of the Year” as voted on by the representatives from each team. This trophy is for players who are under 20 years of age. Imports are not eligible.
- xi) Voting will be done at the Pre-Finals Championship Meeting on the Finals Weekend.

3.5.2 The AWIHL will supply the following awards/medals:

- i) The Stephanie Boxall Trophy - Will be presented to the League’s minor premiers.

3.5.3 Presentation of trophies and awards after Bronze and Gold medal games:

- i) At the conclusion of the Bronze medal game, both teams are to line up on the blue line for the presentation of the Bronze medal to the winning team. The finals announcer will introduce the AWIHL Commissioner and delegate/s presenting the Bronze medals. Names of the Bronze medal winning team will be called out to collect their medal and proceed to shake their oppositions hand along with Bronze medal game officials. Upon conclusion, all officials, players and team staff will depart the ice.
- ii) Ice clean to take place ready for the Gold medal game.
- iii) At the conclusion of the Gold medal game, both teams are to line up on the blue for the presentation of the Gold and Silver medals. The announcer will introduce the delegate/s presenting the medals, awards and Championship trophies. The AWIHL Commissioner will do a short speech before the announcer calls the winners of the individual awards followed by the medal presentation and Championship trophy presentation. The Silver medal winners will collect their medals and line back up on the blue line. Gold medal winners will collect their medals and proceed to shake the hands of the Silver medal

winners and line back up on the blue line for the Championship trophy presentation. Upon conclusion, all officials, players and team staff to depart the ice.

- iv) Staff from teams not in the Gold medal game who have players receiving individual awards will be notified to have that player on hand, it is up to them if they chose to tell the award recipient, prior to the announcement.

3.6 Damages

- 3.6.1 The costs of repair for any reported damages, other than accidental, where possible, will be paid by the AWIHL and those costs will be recovered from the offending team.
- 3.6.2 Damage claims must be verified and authorised by the AWIHL Host Organiser and, wherever possible, by the offending team's manager.
- 3.6.3 Failure to pay for damages may result in exclusion of the offending player/team from further participation in the AWIHL, subject to investigation.
- 3.6.4 The exclusion will be imposed by the AWIHL, which may also recommend to IHA that the offenders be suspended.

3.7 On-Ice Officials and Fees

- 3.7.1 The IHA RIC will allocate the on-ice officials for the League's Games and Finals. The AWIHL recommends that referees of a sufficient standard, i.e. Level 2 or higher, are used for AWIHL games.
- 3.7.2 If insufficient local referees of appropriate standard are available, the cost for transportation and accommodation, including game fees, for interstate Referee(s) and Linespersons shall be borne by the host team.
- 3.7.3 Rates and fees, including air fares, ground transport, accommodation and mileage rates, for referees and linespersons officiating at AWIHL games is determined by IHA but should be equal to the standard of refereeing expected for the league. IHA will pay all the official's game fees upon receipt of the completed game sheets.
- 3.7.4 Unless impractical, a three (3) person referee system shall be adhered to.
- 3.7.5 IHA will pay the cost of flights and accommodation for the IHA RIC to attend the Finals Series Weekend. The AWIHL Teams will share in the cost of flights and accommodation for the AWIHL Commissioner to attend the Finals Series Weekend.

3.8 Injury Reporting System

- 3.8.1 Team Managers or Medical Officers of teams who participate in IHA sanctioned events are required to fill out the IIHF Injury Report Form whenever an injury occurs during an event and are to forward a copy to the IHA Office for processing.
- 3.8.2 The definition of an injury in the IRF is:
 - i) a player missing a practice or game because of an injury sustained during a game or training;
 - ii) suffering a concussion;
 - iii) any dental injury; or
 - iv) any facial lacerations which requires medical attention.

- 3.8.3 The current IRF form can be downloaded from the bottom of the page at <http://www.iha.org.au/insurance/>.
- 3.8.4 The form for each injury is to handed to the Host Co-ordinator immediately after each form is completed.
- 3.8.5 All information gathered on the forms is strictly confidential.
- 3.8.6 At the completion of the games, the forms will be forwarded to the IHA office for data accumulation.

SECTION 4

AWIHL 01: Team Entry Form

AWIHL 02: Team Registration Form

AWIHL 03: Team Officials Registration Form

AWIHL 04: Game Report

AWIHL 05: Application to Enter a New Team

AWIHL 06: AWIHL Commissioner Nomination Form

IIHF Injury Report Forms

The IHA Tribunal & Disciplinary Regulations are supplements to the regulations.

AWIHL 01

AWIHL TEAM ENTRY FORM



THE _____ HEREBY NOMINATE A TEAM, TO
 BE KNOWN AS _____, TO COMPETE IN THE
 20____/____ SEASON OF THE **AUSTRALIAN WOMEN'S ICE HOCKEY LEAGUE:**

We agree to abide by the Rules of the IIHF and the AWIHL, which may alter from time-to-time. The squad list, with imports listed as "I", will be forwarded by 1st October (Form AWIHL 02).

Signed : _____ Position : _____

Place : _____ Date : _____

According to the Rules of the Australian Women's Ice Hockey League Commission, a team that wishes to participate in an AWIHL season has to confirm its participation in writing to the Commissioner no later than August 1st.

The Management of _____

hereby confirms that to the best of our knowledge the _____ players and staff are eligible to participate in the Australian Women's Ice Hockey League (AWIHL).

For and on behalf of _____

 (Print name and position)

 (Date)

 (Signature)



AWIHL 03: TEAM OFFICIALS REGISTRATION FORM

AWIHL Team: _____	Home State: _____
Date: _____	Place: _____

We the undersigned team officials declare, on our honour that:

- a) we are under the jurisdiction of the Club/State Association that has appointed us;
- b) neither the IHA, AWIHL, nor the Host State Association or territory may be held liable for an injury or illness howsoever that may arise and that it is our responsibility to accept the risk and/or to satisfy ourselves that such risks are covered by our State Association or Territory;
- c) we may be held liable for damages to third parties or property arising from our actions and that it is our responsibility to accept that risk and/or to satisfy ourselves that such risks are covered by our State Association or Territory;
- d) we agree to abide by and observe the IHA Statutes, By-Laws and Regulations (Including those relating to Anti-Doping) and the decisions of the IHA and the AWIHL Commissioner in all matters Including disciplinary measures, not to involve any third party whatsoever outside of the IHA and National Women's Council in the resolution of any dispute arising in connection with the AWIHL and/or the Statutes, By-Laws and Regulations and decisions made by the IHA and AWIHL relating thereto excepting where having exhausted the appeal procedures within the IHA and AWIHL in which case I undertake to submit any such decision to the jurisdiction of the Court of Arbitration for Sport (CAS);
- e) we agree to be filmed, televised, photographed, identified and otherwise recorded during the AWIHL event under conditions and for the purposes now or hereafter authorised by the AWIHL in relation to the promotion of the AWIHL and ice hockey events organised by the AWIHL and that all photographs and moving images taken by us at the AWIHL games, Including those of athletes competing within the AWIHL game venues, shall be used solely for personal and non-commercial purposes, unless prior written consent of the IHA and AWIHL is obtained;
- f) we authorise the AWIHL to use personal data provided for broadcast and/or display on Radio, Television, Film, the Internet and/or any other visual, electronic or printed publication in connection with the AWIHL games and/or activities in general and thus waive my rights of protection under any current or future privacy laws related to such data;
- g) we are aware that the AWIHL may have to fulfil commercial obligations with regard to AWIHL games and that such obligations require that State Associations, Territories and their representatives, officials and players fulfill related obligations and hereby agree that we shall abide by and avoid any infringement thereof and in all aspects will indemnify the AWIHL and/or reimburse the AWIHL for any loss, claims, demands, actions or causes of actions that may be brought as a result or failure to abide by the IHA and AWIHL Statutes, Rules, By-Laws, Regulations, and/or decisions of the IHA or AWIHL relating thereto.
- h) Maximum 6 Team Officials per team.

Family & Given Names	Birth Date	Citizenship	Coach Level	Function Code	Signature

Function codes must be filled in as follows:

Eq Ma = Equipment Manager

Te Ph = Team Physiotherapist He Co = Head Coach

Te Do = Team Doctor

As Co = Assistant Coach

Ge Ma = Team General Manager

The President/Owner/State Association of _____ has agreed to the appointment of the above named officials for the _____, and confirms that the personal data is correct and has advised the said officials of their duties and responsibilities.

Authorised Person's Signature: _____

Printed Name: _____ **Date:** _____

AWIHL 04:

AWIHL GAME REPORT FORM



GAME: _____	Date: _____
Host: _____	Location: _____

Competing Teams:	
1. _____	2. _____

Games Results:			
Game 1: _____	vs	_____	Score: _____
Game 2: _____	vs	_____	Score: _____

Reports: _

Actions Taken: _____

General Comments : _____



AWIHL 05: APPLICATION TO ENTER NEW TEAM

Please submit a document addressing each of the below points:

A. Team Details

- Home State
- Team Name
- Team Colours
- Team Home and Away Jersey Designs – attach images
- Home Rink and ability to gain adequate ice time for games – supporting evidence could include letters from the rink manager guaranteeing that ice time could be sought during the timing of the AWIHL season
- Proposed promotion plan

B. Staff:

- Proposed team staff including coach and manager and their qualifications/experience

C. Players:

- Number of registered female players in home state (both current and previous year) attach letter supplied by IHA; and
- List of potential players for team and which AWIHL team they have previously played for (if any). Minimum 20 players

Any other information you feel supports your application.



AWIHL 06: AWIHL COMMISSIONER NOMINATION FORM

Purpose of Position:

The Australian Women's Ice Hockey League Commissioner is the highest-ranking officer of the AWIHL. The Commissioner leads collective bargaining negotiations on behalf of the league and represents all teams and players in the league.

Authority:

The Commissioner is responsible for the coordination, administration and general supervision of the AWIHL and the provision of advice regarding enquiries on regulations and/or the operation of the league. The Commissioner is appointed by the AWIHL committee with the authorisation of Ice Hockey Australia and works with the IHA Referee in Chief and the IHA Women's Director to ensure the smooth operation of the league.

The AWIHL Commissioner is a voting member of the AWIHL Committee and holds the decisive vote in the event of a hung vote.

Specific Duties:

- Liaise with the IHA Referee in Chief and IHA Women's Director to ensure good governance and smooth operation of the AWIHL under the jurisdiction of IHA;
- Manage communication between AWIHL teams and other stakeholders;
- Ensure compliance with AWIHL Regulations;
- Ensure each AWIHL team management are providing satisfactory leadership, planning and organisation, control and succession for their Club;
- Plan and coordinate the pre-game meetings on AWIHL Finals weekends;
- Plan and coordinate the AWIHL AGM to be held prior to 30 June each year

I, _____ <i>(name of nominating person)</i>	
of, _____ <i>(name of AWIHL Team or State Association)</i>	
hereby nominate _____ <i>(name of nominee)</i>	
of, _____ <i>(name of AWIHL Team or State Association)</i>	
for the position of AWIHL Commissioner commencing season 20____ / ____ of the Australian Women's Ice Hockey League.	
_____ <i>(Signature of nominating person)</i>	_____ <i>(Signature of nominee)</i>
_____ <i>(Date)</i>	_____ <i>(Date)</i>

This AWIHL Commissioner Nomination form is to be submitted to the IHA Women's Director no later than 31 December on even numbered years. (i.e. 2020)

IHA INJURY REPORT FORM

Purpose

IHA's Injury Reporting Form is a significant tool for collecting information to measure the types of injuries, the number of reoccurrences and severity. The collected information will assist in determine what measures may be implemented to prevent, or at the very least, reduce recurring injuries to IHA's member players and officials in IHA sanctioned competitions.

Injury Definition

1. An injury is considered reportable if a player a misses a training or a game because of an injury sustained during a practice or game.
2. The player does not return to play for the remainder of the game following an injury.
3. All concussions.
4. Any dental injury.
5. Any facial laceration.

Competition :.....

Team:.....

Date:..... / /

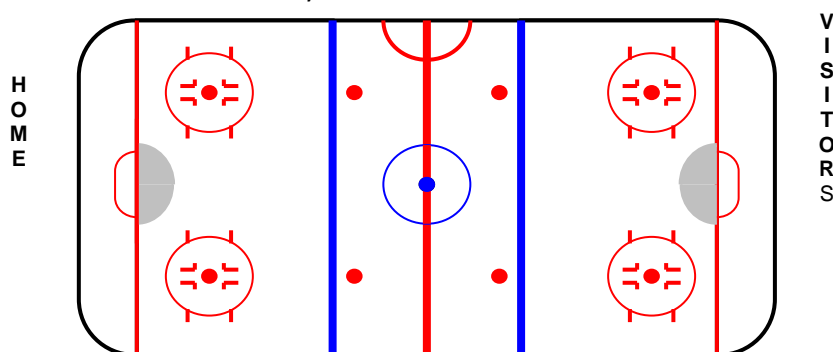
Player's Name:.....

Age:

Position: Center Wing Defence Goal

Zone of Injury

Mark the area of the ice surface where the injury occurred. Note that Home and Vistor ends are marked to identify offensive and defensive activity.



Location of the injury:				Assessment:	
1. Head	<input type="checkbox"/>	13. Forearm	<input type="checkbox"/>	24. Buttocks	<input type="checkbox"/>
2. Face	<input type="checkbox"/>	14. Wrist	<input type="checkbox"/>	25. Pelvis	<input type="checkbox"/>
3. Neck	<input type="checkbox"/>	15. Hand	<input type="checkbox"/>	26. Groin	<input type="checkbox"/>
4. Throat	<input type="checkbox"/>	16. Thumb	<input type="checkbox"/>	27. Genitals	<input type="checkbox"/>
5. Jaw/Chin	<input type="checkbox"/>	17. Fingers	<input type="checkbox"/>	28. Hip	<input type="checkbox"/>
6. Teeth/Mouth	<input type="checkbox"/>	18. Chest	<input type="checkbox"/>	29. Thigh	<input type="checkbox"/>
7. Eye	<input type="checkbox"/>	19. Abdomen	<input type="checkbox"/>	30. Knee	<input type="checkbox"/>
8. Ear	<input type="checkbox"/>	20. Kidneys	<input type="checkbox"/>	31. Leg	<input type="checkbox"/>
9. Shoulder	<input type="checkbox"/>	21. Upper back	<input type="checkbox"/>	32. Ankle	<input type="checkbox"/>
10. Upper arm	<input type="checkbox"/>	22. Lower back	<input type="checkbox"/>	33. Foot	<input type="checkbox"/>
11. Elbow	<input type="checkbox"/>	23. Coccyx	<input type="checkbox"/>	34. Toes	<input type="checkbox"/>
12. Was the injury: Minor: <input type="checkbox"/>				Acute: <input type="checkbox"/>	
				Severe: <input type="checkbox"/>	

Cause of Injury	
Body Check	<input type="checkbox"/>
Check from behind	<input type="checkbox"/>
Check to the head/neck	<input type="checkbox"/>
Stick contact	<input type="checkbox"/>
Puck contact	<input type="checkbox"/>
Unintended collision	<input type="checkbox"/>
Fighting	<input type="checkbox"/>
Non-contact	<input type="checkbox"/>
Other	<input type="checkbox"/>
Was a penalty called	Y N
Equipment	
a) Full Face Mask	Y N
b) Visor	Y N
c) None	Y N
d) Mouthguard	Y N
e) Neck Guard	Y N

Time Lost: (The amount of time the player was out of play)

1. Return the same game: 2. Return the same day: 3. Out for the Championship: 4. One week or more:

The form is to be submitted to the IHA Office at office@iha.org.au for processing