



# Awel y Môr Offshore Wind Farm

## Statement of Community Consultation (SoCC)

**August 2021**

Published in English and Welsh languages



## **Liability**

In preparation of this document RWE Renewables UK (RWE) and their subcontractors have made reasonable efforts to ensure that the content is accurate, up to date and complete for the purpose for which it was prepared. Neither RWE nor their subcontractors make any warranty as to the accuracy or completeness of material supplied.

Other than any liability on RWE or their subcontractors detailed in the contracts between the parties for this work neither RWE or their subcontractors shall have any liability for any loss, damage, injury, claim, expense, cost or other consequence arising as a result of use or reliance upon any information contained in or omitted from this document.

Any persons intending to use this document should satisfy themselves as to its applicability for their intended purpose.

Where appropriate, the user of this document has the obligation to employ safe working practices for any activities referred to and to adopt specific practices appropriate to local conditions.

# Contents

1. Purpose of this document: the Statement of Community Consultation (SoCC)
2. About us: the applicant (Awel y Môr Offshore Wind Farm Limited)
3. About the Project: Awel y Môr (AyM)
4. Consenting processes and consultation (Development Consent Orders (DCOs), Nationally Significant Infrastructure Projects (NSIPs) and Marine Licences (MLs))
5. Who will we consult?
6. How long will we consult for?
7. What will we consult on?
8. How will we consult?
9. How can I access this SoCC and other consultation materials?
10. When can I get involved?
11. How can I provide feedback?
12. What will we do with your feedback?
13. Another opportunity to provide feedback
14. Welsh language
15. Adapting to the COVID-19 pandemic
16. Contact details and further information

## Figures

- Figure 1.....Project Plan
- Figure 2.....Components of a typical offshore wind farm
- Figure 3.....Project Timeline
- Glossary

TERM	DEFINITION
AyM	Awel y Môr Offshore Wind Farm
DCO	Development Consent Order
LPA	Local Planning Authority
ML	Marine Licence
NRW	Natural Resources Wales
NSIP	Nationally Significant Infrastructure Project
PEIR	Preliminary Environmental Information Report
PINS	Planning Inspectorate

## **1. Purpose of this document: the Statement of Community Consultation (SoCC)**

Awel y Môr Offshore Wind Farm Limited is publishing this Statement of Community Consultation (SoCC) with regard to the proposed development of Awel y Môr Offshore Wind Farm ('AyM' or 'the Project'). The purpose of this document is to set out how we will consult the local community about our proposal, as required under section 47 of the Planning Act 2008 ('the Act').

### **This SoCC sets out:**

- **information regarding the Project's background**
- **how the application for development consent will progress**
- **how we have identified who to consult**
- **proposed consultation methods and materials**
- **how members of the community can continue providing their feedback to help inform the Project as it develops**

The SoCC has been written in consultation with Denbighshire County Council as the host local authority, given the proposed onshore infrastructure and cable route lies exclusively within its boundary. Other Local Planning Authorities (LPAs) have also been consulted as set out in Section 5 below.

## **2. About us: the applicant (Awel y Môr Offshore Wind Farm Limited)**

The Project is being developed by RWE Renewables (RWE), on behalf of the applicant, Awel y Môr Offshore Wind Farm Limited. RWE produces electricity from renewable energy sources, and is one of the largest offshore wind generators in the world.

RWE is a major investor in Welsh energy, and generates one third of Wales' renewable electricity, including from Gwynt y Môr (AyM's sister project). RWE is leading the development of Awel y Môr Offshore Wind Farm, and the team has extensive experience in developing, building and operating Welsh renewable energy projects. Together, these projects contribute to the Welsh Government's ambitious targets for decarbonisation.

## **3. About the Project: Awel y Môr (AyM)**

The Project is directly west of the existing Gwynt y Môr Offshore Wind Farm. It is located approximately 10.5km off the Welsh coast in the Irish Sea, with a maximum

total area of 88km<sup>2</sup> (as shown below in Figure 1).

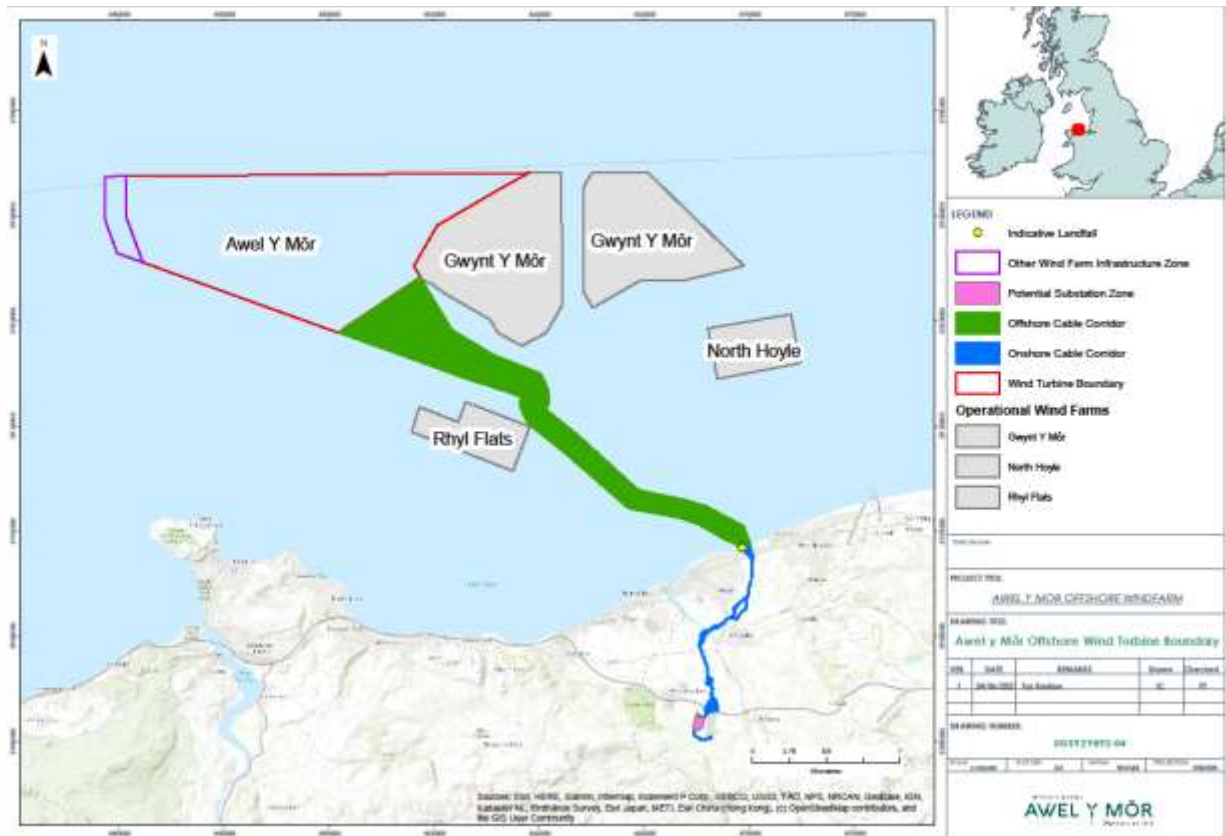


Figure 1: Project Plan

AyM would provide a further significant contribution to the Welsh Government's energy targets of 70% of electricity to be generated from renewables by 2030.

The key drivers for renewable energy in the UK, and for AyM, are reducing greenhouse gas emissions, providing increased energy security, and maximising economic opportunities for the UK and local economies. Green infrastructure development has also been identified as one of UK Government's COVID-19 pandemic economic recovery and post-Brexit strategies.

The typical components of an offshore wind farm are shown in Figure 2, directly below.



Figure 2: Components of a typical offshore wind farm

Projects such as AyM are considered to be a significant opportunity for cost reduction in offshore wind, given technical expertise and experience on site, as well as existing datasets and environmental studies. These matters are an increasingly important driver in the highly-competitive UK electricity market which aims to deliver the best possible value to the consumer.

The exact size and capacity of the Project is being determined through survey and environmental investigation activities, of which the pre-application consultation is a key part. The consenting process began in 2018 [check with PC] and is expected to be complete by 2023/24. Construction will follow thereafter, and the wind farm could become fully operational by 2030 (please refer to Figure 3 below for a high-level project timeline).

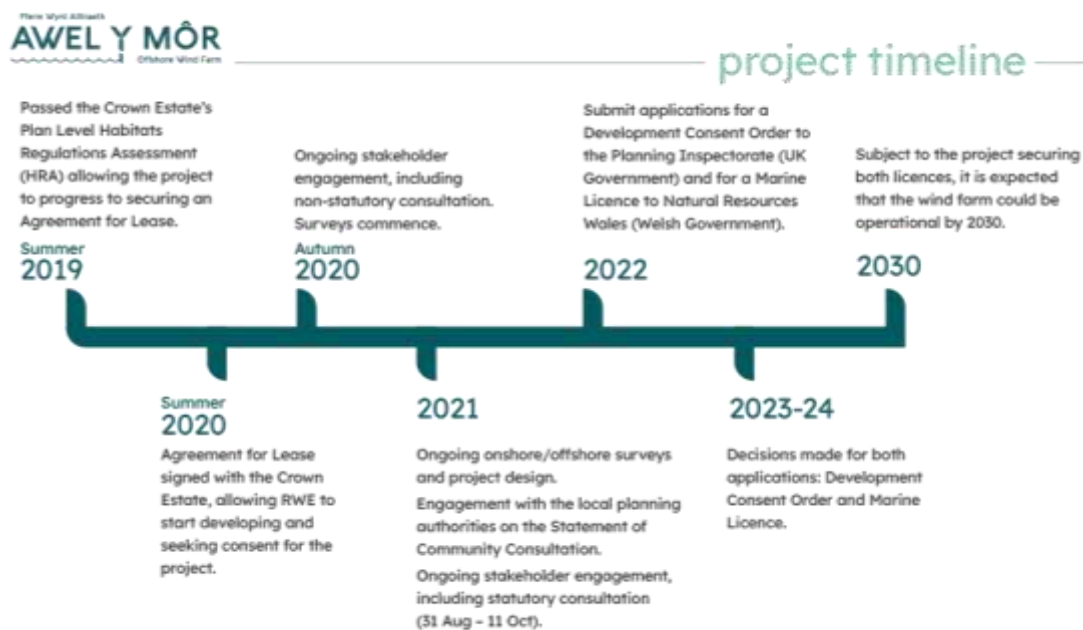


Figure 3: Project Timeline

#### 4. Consenting processes and consultation (Development Consent Orders (DCOs), Nationally Significant Infrastructure Projects (NSIPs) and Marine Licences (MLs))

Since AyM has a proposed capacity in excess of 100MW offshore, under the Act it is classified as a **Nationally Significant Infrastructure Project (NSIP)**. As such, we must apply for a **Development Consent Order (DCO)** to build and operate the Project. The DCO process was created to streamline the consenting of large infrastructure projects and to ensure transparency and public participation.

The application process will be managed by the Planning Inspectorate (PINS) and examined by an independent Examining Authority (ExA), which will make a recommendation for consent or refusal, before a decision is made by the Secretary of State for Business, Energy & Industrial Strategy. The local planning authority plays an important consultative role in the process, but is not the decision-maker as it would be for smaller projects applied for under the Town and Country Planning process. If granted, the DCO will consent the offshore turbine array, cables and associated electrical infrastructure as well as the onshore grid connection works (as illustrated above in Figure 2).

For more information on the NSIP process, please refer to:

<https://infrastructure.planninginspectorate.gov.uk/wp-content/uploads/2013/04/Advice-note-8.0.pdf>

Pre-application consultation is a legal obligation for NSIPs, and RWE believes in early engagement with stakeholders on all of its projects. This document begins the statutory phase of consultation pursuant to section 47 of the Act, which sets out the applicant's duty to consult with the local community on an NSIP.

This consultation will allow us to update you on the Project and show you how it has been modified in response to feedback gathered from the non-statutory public consultation that took place in late 2020. You will also be able to provide feedback on our proposals, and have the opportunity to influence the design and development processes before submission of applications for the necessary development consents. This approach allows us to develop our proposals collaboratively and responsibly, supporting local community interests.

Our pre-application consultation must be deemed adequate by PINS, which means we must be able to show that we have consulted with the relevant stakeholders, complied with this SoCC, and publicised the application in the required manner.

Since AyM lies in Welsh waters, we also need a **Marine Licence (ML)** to build and operate the offshore elements of the Project, under the Marine & Coastal Access Act 2009. ML applications are managed and determined by Natural Resources Wales (NRW) on behalf of the Welsh Government. AyM will undertake pre-

application consultation on its ML application in accordance with best practice and NRW will undertake consultation after submission of the ML application. For more information on the ML process, please refer to:

<https://naturalresources.wales/permits-and-permissions/marine-licensing/?lang=en>

## **5. Who will we consult?**

In accordance with section 47 of the Act, we will consult people living in the vicinity of the land and who may be affected by the Project. In order to identify the best means of doing so, the project team has developed this SoCC in discussion with our host local authority, Denbighshire County Council.

Although not a statutory requirement, we have extended these discussions to include the coastal authorities (Flintshire County Council, Conwy County Borough Council, Isle of Anglesey County Council and Gwynedd Council), plus Snowdonia National Park Authority (as the largest national park authority in Wales within sight of the Project) and Wrexham County Borough Council (in acknowledgement of Wrexham as North Wales' largest town). We hope this ensures the best use of local knowledge for involving communities in the consultation.

In line with this SoCC and the relevant sections of the Act, we will engage with:

- LPAs, Members of the Senedd (MSs), Members of Parliament (MPs), and county, city, town and community councils, including a number of locally elected members from within Denbighshire and other local planning authorities across North Wales
- Owners, tenants and occupiers of land affected by the DCO application
- Commercial stakeholders, including asset owners (such as the owners of cables and pipelines) and the fisheries industry
- Resident, community, tourism and business organisations
- Individuals/members of the public
- Environmental bodies

We will continue working with the LPAs regarding how to engage individuals or groups who may be considered 'hard to reach' or 'seldom heard', and welcome further information regarding others. In addition, anyone else who may be interested, or who feels impacted by our proposals, is welcome to participate.

## **6. How long will we consult for?**

As applicant, we must ensure that the local community understands the Project and is given the opportunity to comment on and shape our proposals through consultation. The statutory requirement for the DCO is to consult for a minimum of 28 days starting from the day after a consultee receives the Preliminary Environmental Information Report (PEIR, please refer to Section 7 directly below for more information) and consultation documents.



However, and to accommodate any difficulties that might be experienced due to the ongoing pandemic, we have extended this period to six weeks of statutory consultation, currently planned for **between 31 August – 11 October 2021**. During this period we will provide information on all aspects of our Project plans.

## **7. What will we consult on?**

### **Environmental information: consulting on the Preliminary Environmental Information Report (PEIR):**

In accordance with Regulation 12 of the Infrastructure Planning (Environmental Impact Assessment) Regulations 2017 (the EIA Regulations), RWE confirms that AyM is a development which requires Environmental Impact Assessment and, as such, we are undertaking an **Environmental Impact Assessment (EIA)** for AyM in accordance with Regulation 5 of the EIA Regulations.

Accordingly, our project team has been liaising with statutory consultees, including LPAs and environmental regulators, to inform preliminary assessments of the offshore and onshore environments. The methodology and scope of the EIA have been agreed with the relevant regulatory bodies via a formal scoping process undertaken in June-July 2020. In line with PINS' published Scoping Opinion and an agreed Evidence Plan<sup>i</sup>, extensive surveying and data-gathering have been completed over the past 18-24 months. (Both AyM's Scoping Report and PINS' Scoping Opinion can be viewed directly on the PINS' website through the following webpage:

<https://infrastructure.planninginspectorate.gov.uk/projects/wales/awel-y-mor-offshore-wind-farm/?ipcsection=docs&stage=1&filter1=Environmental+Impact+Assessment+Scoping>

The **Preliminary Environmental Information Report (PEIR)** is the first output of the EIA process, and is effectively a draft of the Environmental Statement to be submitted with our applications. It will incorporate the findings of the environmental surveys and initial assessments and will enable consultees to develop an informed view of the scope of the Project, the potential environmental effects and the methods proposed to avoid, minimise or mitigate those effects.

### **Documentation to inform you of our project plans**

The list below shows the sorts of documents you will have access to during the statutory consultation to help inform you about the Project. The non-technical documents will be available in both Welsh and English (this does not include the PEIR or maps and plans of the Project):

---

<sup>i</sup> The Evidence Plan is a formal process by which we agree with regulators what evidence to submit as part of our DCO application.

- Preliminary Environmental Information Report (PEIR)
- The non-technical summary (NTS) of the PEIR
- Statement of Community Consultation (this document) - for information only: comments on its contents are not being sought as part of the statutory consultation
- Consultation Questionnaire
- Maps and plans of the Project

National Policy Statements (NPS<sup>ii</sup>), the Environment (Wales) Act 2016 and The Climate Change Act 2008 (as amended), updated to include targets from the Paris Agreement 2015 (ratified by the UK in 2016), all establish the urgent need for energy and new renewable energy generation. The need for the Project is therefore not an issue on which comment will be sought; instead we will focus on gathering views on how we can shape the best possible Project for the area.

## **8. How will we consult?**

### **Hybrid approach**

As a result of the current uncertainty surrounding all face-to-face interactions and changing government guidelines regarding the COVID-19 pandemic, we are adopting a 'hybrid' approach to the statutory consultation on our Project. This means that we will focus on virtual methods to publicise the consultation and engage with our stakeholders and the community, but we will also plan a limited element of physical consultation that will take place only if COVID-19 policy allows.

### **Mobile consultation**

In line with this 'hybrid' approach, we are proposing a mobile exhibition vehicle as the means of face-to-face consultation. If deemed safe at the time, the vehicle will visit locations within the vicinity of the onshore cable route and infrastructure within Denbighshire, extending along coastal North Wales to include areas which may have views of the Project.

This approach will be based outdoors and therefore provide flexibility against COVID constraints and uncertainty. Choosing visible and accessible sites (such as supermarket or visitor attraction car parks) will allow AyM to effectively engage with local residents, visitors and 'hard to reach' or 'seldom heard' groups.

---

<sup>ii</sup> National Policy Statements EN-1 and EN-3 are available as follows:

[https://assets.publishing.service.gov.uk/government/uploads/system/uploads/attachment\\_data/file/47854/1938-overarching-nps-for-energy-en1.pdf](https://assets.publishing.service.gov.uk/government/uploads/system/uploads/attachment_data/file/47854/1938-overarching-nps-for-energy-en1.pdf)

[https://assets.publishing.service.gov.uk/government/uploads/system/uploads/attachment\\_data/file/37048/1940-nps-renewable-energy-en3.pdf](https://assets.publishing.service.gov.uk/government/uploads/system/uploads/attachment_data/file/37048/1940-nps-renewable-energy-en3.pdf)

Please refer to our project website for live updates regarding details of face-to-face or mobile consultation taking place during the consultation period:

[www.awelymor.cymru](http://www.awelymor.cymru)

Any mobile events are likely to constitute the extent of our face-to-face consultation and will be supplemented by an extensive programme of virtual consultation, as laid out in the table below.

*Any physical or face-to-face consultation will only be held (in addition to the virtual consultation methods listed in the table below) if COVID-19 constraints permit. If physical consultation is deemed unsafe or not permitted, AyM will rely on virtual methods of consultation alone.*

### **Selected Consultation Methods**

<b>Method</b>	<b>Detail</b>
Website	Dedicated AyM project website, where all consultation materials will be available to view and respond to throughout the consultation (including the PEIR and the Consultation Questionnaire): <a href="http://www.awelymor.cymru">www.awelymor.cymru</a>
Virtual exhibition	Online exhibition, accessible 24/7 throughout the consultation period via our project website. It will include digital features to engage the public, including interactive fly-overs focussed on our onshore cable route, video montages and other features: <a href="https://exhibition.awelymor.cymru/">https://exhibition.awelymor.cymru/</a>
Stakeholder briefings	AyM will host a series of virtual briefings with project stakeholders, including MSs, MPs, a number of locally elected members from within Denbighshire and other local planning authorities across North Wales, and county, city, town and community councils along the proposed cable route and further west in sight of the offshore array. AyM will also advise stakeholders about the consultation and how to participate.
Project newsletter	The AyM newsletter is sent to a mailing list of select organisations and individuals every quarter. As we approach the statutory consultation, the newsletter will be distributed monthly. It will update stakeholders about the Project and promote participation in the statutory consultation. (You can find copies of our newsletters on our website page here: <a href="https://awelymor.cymru/newsletter/">https://awelymor.cymru/newsletter/</a> )
Mobile exhibition vehicle	Flexible, safe and accessible, physical consultation option if deemed safe at the time. <i>Please see above for more</i>

	<i>information and refer to our project website for updates during the consultation period: <a href="http://www.awelymor.cymru">www.awelymor.cymru</a></i>
Mail-out exercise	AyM will send a leaflet to residents and businesses in Denbighshire within a 3km radius of the onshore infrastructure and cable route. The leaflet will signpost our Project website for all the latest consultation information, including any face-to-face activities planned and information regarding how to respond to our consultation.
Community magazine publications	AyM will advertise the consultation in at least one local community magazine publication (Local Dragon) that is delivered directly to households within parts of north Denbighshire and the North Wales coastal communities, including to parts of Conwy and Anglesey.
Online information sessions	AyM staff will host a series of online information sessions on the Project and consultation. These will happen at a range of times of day, and across the week/end, in order to make them accessible to a broad range of stakeholders. (Please refer to our website for session and registration information during the consultation period: <a href="http://www.awelymor.cymru">www.awelymor.cymru</a> .)
Statutory notices	Statutory notices will announce the publication of the SoCC and the proposed DCO application locally and nationally via: the Daily Post (local newspaper), The Guardian (national newspaper), London Gazette (required), Lloyd's List (required) and Fishing News (appropriate fishing trade journal). The notices will direct stakeholders to the Project website for the latest information regarding availability of hard copies of select consultation materials at deposit locations (if deemed safe at the time), our consultation activities and how to provide feedback.
Social media	AyM will use its social media platforms and mailing list to promote participation in the consultation. AyM will also encourage stakeholders to pass on the message via their own social media and mailing lists.
Posters	AyM will produce posters promoting participation in the consultation, and will share them with local venues to display.

*Any necessary, last minute consultation activity changes will be published on the dedicated Project website ([www.awelymor.cymru](http://www.awelymor.cymru)) and through AyM's social media*

platforms. We will also provide updates to Denbighshire County Council and other LPAs for sharing through their own information channels.

## 9. How can I access this SoCC and other consultation materials?

The consultation materials provided to inform you about the Project will be available to view free-of-charge online throughout the consultation period, including our Consultation Questionnaire for you to complete, on the Project's dedicated website: [www.awelymor.cymru](http://www.awelymor.cymru).

Given the unprecedented impact of the COVID-19 virus on daily life, government regulations have permanently lifted the requirement to make consultation materials and this SoCC available in hard copies at select physical locations (Infrastructure (Publication and Notification of Applications etc.) (Coronavirus) (Amendment) Regulations 2020).

However, subject to COVID-19 restrictions, we aim to deposit hard copies of select consultation materials at the locations listed below. The materials provided may include: hard copies of the SoCC (this document), the consultation booklet (a non-technical summary (NTS) of the PEIR) and the Consultation Questionnaire. Please contact the location before visiting to check provision and to ensure the opening hours remain as stated.

Deposit locations of hard-copies of select consultation materials (including this SoCC) for viewing: COVID-19 restrictions permitting			
Location	Address	Dates available	Opening hours
Denbighshire	Prestatyn Library: Kings Ave, Prestatyn LL19 9LH, UK	31 August – 11 October 2021	<a href="https://www.denbighshire.gov.uk/en/leisure-and-tourism/libraries/prestatyn.aspx">https://www.denbighshire.gov.uk/en/leisure-and-tourism/libraries/prestatyn.aspx</a>
	Rhyl Library: 11A Church St, Rhyl LL18 3AA, UK	As above	<a href="https://www.denbighshire.gov.uk/en/leisure-and-tourism/libraries/rhyl.aspx">https://www.denbighshire.gov.uk/en/leisure-and-tourism/libraries/rhyl.aspx</a>
	Rhuddlan Library: 9 Vicarage Ln, Rhuddlan, Rhyl LL18 2UE, UK	As above	<a href="https://www.denbighshire.gov.uk/en/leisure-and-tourism/libraries/rhuddlan.aspx">https://www.denbighshire.gov.uk/en/leisure-and-tourism/libraries/rhuddlan.aspx</a>
	St Asaph Library: Library,	As above	<a href="https://www.denbighshire.gov.uk/en/leisure-and-tourism/libraries/st-asaph.aspx">https://www.denbighshire.gov.uk/en/leisure-and-tourism/libraries/st-asaph.aspx</a>

	The Roe, Saint Asaph LL17 0LU, UK		
<b>Flintshire</b>	Holywell Library: Holywell Leisure Centre, North Road, Holywell, Flintshire, CH8 7UZ Flintshire	As above	<a href="https://aura.wales/holywell-library/">https://aura.wales/holywell-library/</a>
<b>Conwy</b>	Colwyn Bay Library: Woodland Rd West, Colwyn Bay LL29 7DH	As above	<a href="https://www.conwy.gov.uk/en/Resident/Libraries-Museums-and-Archives/Libraries/Libraries-and-opening-times/Colwyn-Bay-Library.aspx">https://www.conwy.gov.uk/en/Resident/Libraries-Museums-and-Archives/Libraries/Libraries-and-opening-times/Colwyn-Bay-Library.aspx</a>
	Llandudno Library: 48 Mostyn St, Llandudno LL30 2RP	As above	<a href="https://www.conwy.gov.uk/en/Resident/Libraries-Museums-and-Archives/Libraries/Libraries-and-opening-times/Llandudno-Library.aspx">https://www.conwy.gov.uk/en/Resident/Libraries-Museums-and-Archives/Libraries/Libraries-and-opening-times/Llandudno-Library.aspx</a>
	Abergele Library: Market St, Abergele LL22 7BP	As above	<a href="https://www.conwy.gov.uk/en/Resident/Libraries-Museums-and-Archives/Libraries/Libraries-and-opening-times/Abergele-Library.aspx">https://www.conwy.gov.uk/en/Resident/Libraries-Museums-and-Archives/Libraries/Libraries-and-opening-times/Abergele-Library.aspx</a>
	Llanfairfechan Library: Village Rd, Llanfairfechan LL33 0AA	As above	<a href="https://www.conwy.gov.uk/en/Resident/Libraries-Museums-and-Archives/Libraries/Libraries-and-opening-times/Llanfairfechan-Library.aspx">https://www.conwy.gov.uk/en/Resident/Libraries-Museums-and-Archives/Libraries/Libraries-and-opening-times/Llanfairfechan-Library.aspx</a>
<b>Gwynedd</b>	Bangor Public Library Gwynedd Road, LL57 1DT	As above	<a href="https://www.gwynedd.llyw.cymru/en/Residents/Libraries-and-archives/Your-local-library/Bangor-library.aspx">https://www.gwynedd.llyw.cymru/en/Residents/Libraries-and-archives/Your-local-library/Bangor-library.aspx</a>
<b>Isle of Anglesey</b>	Llyfrgell Porthaethwy Library: Wood St, Menai Bridge LL59 5AS, United Kingdom	As above	<a href="https://www.anglesey.gov.uk/en/Residents/Libraries/Find-your-local-library/Menai-Bridge-Library.aspx">https://www.anglesey.gov.uk/en/Residents/Libraries/Find-your-local-library/Menai-Bridge-Library.aspx</a>

	Beaumaris Library: Grammar School Lane, Beaumaris LL58 8AL	As above	<a href="https://www.anglesey.gov.uk/en/Residents/Libraries/Find-your-local-library/Beaumaris-Library.aspx">https://www.anglesey.gov.uk/en/Residents/Libraries/Find-your-local-library/Beaumaris-Library.aspx</a>
--	---	----------	---

We will look into facilitating hard copy responses, for example through provision of a freepost address, or deposit boxes at deposit locations.

Furthermore, select consultation materials (including this SoCC and the NTS of the PEIR) will be available in hard copy for free upon request. The PEIR plans and other associated documents will, however, have a cost-recovery fee attached for provision of hard copies. Requests can be made throughout the consultation period via the contact details provided in Section 16 below.

To support stakeholders who do not have reliable internet access, but do have a computer or other suitable device, AyM will provide **consultation documents on USB stick** by post upon request (via the contact details in Section 16 below).

#### 10. When can I get involved?

AyM will accept and consider comments on our proposals at any time via the contact details in Section 16 below. However, the statutory consultation period will run from 31 August to 11 October 2021, and we would encourage you to participate then.

**Please refer to our Project website for any updated information regarding the statutory consultation, including any planned physical consultation that may go ahead: [www.awelymor.cymru](http://www.awelymor.cymru)**

#### 11. How can I provide feedback?

Please use our Consultation Questionnaire. It will be available online during the statutory consultation period via the Project website and virtual exhibition ([www.awelymor.cymru](http://www.awelymor.cymru) and <https://exhibition.awelymor.cymru/>). Alternatively, you can request a hard copy using the contact details in Section 16 below, or (subject to COVID restrictions) at the deposit locations listed above.

**Please note: the Project website allows you to register to receive regular updates on our progress. You can also follow us on social media at @RWE\_UK.**

## **12. What will we do with your feedback?**

As project developer, and as a requirement of the DCO application, we have a duty to take account of responses to consultation. As part of the application, we will publish a Consultation Report setting out the following:

- Our consultation process
- How the consultation was undertaken in accordance with this SoCC
- How we met all legal requirements (notably: sections 42, 47, 48 of the Act)
- How we worked with local planning authorities to ensure our consultation was proportionate and tailored to local communities living in the vicinity of the Project
- A summary of all consultation responses (from both local communities and statutory consultees), including how this feedback was considered and implemented in light of the Project's decision-making processes and plans
- If relevant: why any feedback received was not taken on board.

## **13. Another opportunity to provide feedback**

The statutory consultation is not the last chance to have your say. Once we have submitted our DCO planning application, there will be opportunities to submit written comments on the documents, and to raise key points with the Examining Authority during public hearings. These will be publicised at the appropriate time. Guidance on the DCO process can be found here:

<https://infrastructure.planninginspectorate.gov.uk/wp-content/uploads/2013/04/Advice-note-8.0.pdf>

## **14. Welsh language**

Awel y Môr believes it is good business practice to engage in the language of choice of our stakeholders. We employ Welsh-speaking staff across our Welsh and English offices, and we welcome enquiries in the Welsh language too. This SoCC, the Non-Technical Summary of the PEIR (NTS) and the Consultation Questionnaire will all be available in both the English and Welsh languages. Further, our dedicated Project website and virtual exhibition will also be available to view in both English and Welsh. Our Welsh Language policy is available to view on our Project website ([www.awelymor.cymru](http://www.awelymor.cymru)).

## **15. Adapting to the COVID-19 pandemic**

The COVID-19 pandemic has had a dramatic impact on all aspects of life in the UK since the national 'lockdown' which commenced in March 2020. It is impossible to predict the impact of the virus on public life over the AyM development period. However:



- The UK Government has indicated that green infrastructure investment will be a component of its pandemic economic recovery and post-Brexit strategies;
- The UK's urgent need for new and renewable energy sources remains;
- RWE, the Planning Inspectorate, Natural Resources Wales, the Secretary of State for Business, Energy & Industrial Strategy and key stakeholders are adapting to circumstances and amending practices to deliver 'business as usual' where feasible; and
- Advice has been published by various professional bodies for keeping the development and consenting processes moving during periods of uncertainty.

RWE will follow best practice and recent precedent in ensuring that local communities are able to have their say on the proposals for AyM regardless of the pandemic. For example, we are allowing longer than statutory response times, offering virtual meetings, online materials and hard copies of select consultation materials at deposit locations as laid out above.

We will also work with the local authorities or the libraries themselves, to promote use of their inhouse digital devices to view the SoCC and consultation materials. This may involve the use of an online booking system through the respective libraries or equivalent.

Any face-to-face consultation will be held only if Government and internal guidance permits at the time.

## **16. Contact details and further information**

- **Project email address:** [awelymor@rwe.com](mailto:awelymor@rwe.com)
- **Freephone information line:** 0800 197 8232
- **Postal address:** Awel y Môr Offshore Wind Farm Ltd, RWE Renewables UK Ltd, Windmill Hill Business Park, Whitehill Way, Swindon, SN5 6PB
- **Project website:** <http://www.awelymor.cymru/>
- **Social media:** @RWE\_UK

**Should you require this document in large print or other formats, please contact us using the contact details provided directly above. We will also consider supplying this SoCC in languages other than English or Welsh, should demand within the local community call for it.**

**When responding to our pre-application consultation, your personal data will be stored in compliance with GDPR by RWE and will not be shared with third parties except as required by law. Your details and a copy of any response will be passed on to the Planning Inspectorate to ensure that our pre-application consultation is**

sufficient and in line with the planning process. You should assume that the substance of any response to consultation provided to RWE will be shared with the Planning Inspectorate, and, under redaction of personal details, will be included in an appendix to the consultation report and will be published on the Planning Inspectorate's website as part of any application.

Awel y Môr Offshore Wind Farm Ltd.  
[www.awelymor.cymru](http://www.awelymor.cymru)

Registered office:  
Windmill Hill Business Park  
Whitehill Way  
Swindon SN5 6PB  
Wiltshire SN5 6PB  
Registered in England and Wales no. 12270928