



2014/2015
ANNUAL REPORT

VISION

That the Art Gallery of Grande Prairie will be recognized as the best art gallery of its size in the world within 25 years.

MISSION

To build and to share the art experience.

VALUES

As the Board, staff and volunteers of the gallery, we:

- Seek to identify and reduce the barriers between the individual and his or her experience of art.
- Empower the individual to experience art in his or her own way.

PURPOSE

The purpose of the Art Gallery of Grande Prairie is to serve the Peace Country Region of north-western Alberta and north-eastern British Columbia by establishing and maintaining a public art gallery and collecting and preserving works of cultural property for exhibition to the public. We offer inspiration through preservation and exploration of works of art and critical reflection of ideas in modern society.

CONTENTS

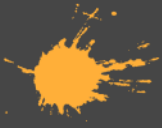


- Message from the Chair 2
- Message from the Director / Curator 3
- Education and Public Programming 6
 - Interpretive Programs 7
 - Artist Presentations 8
 - Workshops 10
 - Community and Special Events 11
 - The Carlstrom Family Green Space 13
 - Art for the Curious 14
- Exhibitions 15
- Publications 32
- Travelling Exhibitions (TREX) 33
- Fundraising and Events 38
- Membership 41
- Volunteers 42
- Sponsors and Funders 44
- Partners 45
- General Statistics 46



www.aggp.ca





MESSAGE FROM

The Art Gallery of Grande Prairie's location in the heart of downtown Grande Prairie is significant to the central role it plays in the cultural make up of our city and our community. The gallery allows residents and visitors of the area access to creative thinkers from the Peace Region, and internationally.

These connections would not be possible without assistance from our supporters. We are extremely grateful to the City of Grande Prairie, the County of Grande Prairie No. 1, the Municipal District of Greenview, and the Alberta Foundation for the Arts for their generous financial operating assistance to promoting the gallery's continued success.

The gallery's leadership is also ensured through the benevolent generous community support of volunteers and private donors. We are sustained by and for the individuals who work passionately to see the gallery prosper in our mission to "build and share the art experience."

The 2014 - 15 year has been exciting as we work towards establishing our permanence as an organization in a substantially larger space with new challenges and rewards. Thank you to the Staff of the gallery who have put forth fantastic exhibits, openings, and events that have engaged our viewers and established the Art Gallery of Grande Prairie as a provincially acclaimed exhibition space. My appreciation particularly extends to our new Director / Curator, Griffith Aaron Baker, who started in September 2014, and has worked tirelessly to establish stability within our organization.

It has been a pleasure to work with the Board of the Art Gallery of Grande Prairie and I want to thank the Directors for the occasion of participating with such an experienced and professional group of people.

There are some truly exciting times ahead for the Art Gallery of Grande Prairie and It is a privilege to contribute to the leadership of this magnificent organization.

A handwritten signature in blue ink, appearing to read 'Kendra Davis', located below the main text.

Kendra Davis
Chairperson

MESSAGE FROM THE



It's been another successful year at the Art Gallery of Grande Prairie. Since I assumed the role of Director / Curator in September 2014, I have concentrated on restructuring our organization from finances and staffing to exhibitions, educational programming and outreach. The first eight months of work under my direction has enabled the gallery to utilize a number of test programs and initiatives to better understand the needs of the Peace Region community and the capacity of the staff and volunteers, an endeavour we plan on continuing well into the new season. As most public art galleries program at least two years in advance, the majority of the exhibitions you've seen throughout the past year were

initiated by our previous Executive Director, Robert Steven, who has recently accepted the lead position at the revitalized Art Gallery of Burlington in Ontario. The last of these pre-programmed exhibitions are slotted for March 2016 with an exciting line-up of artists and themes.

I am pleased to concentrate on my curatorial vision in the upcoming years which will present an equal combination of programs and activities that challenge and alter perceptions, provide insight, reveal issues, and contribute to the understanding of contemporary art practice, knowledge of art history, and the potential of an art form to push the boundaries of the gallery walls and permeate the lives of individuals within our community. As our annual exhibition schedule is arranged with local, provincial, national and internationally established artists, collectives, permanent collection exhibits and guest curators, we will continue to explore various areas of interest that infuse the regional and international, with special concentration on representation by gender and ethnicity as well as political and social current events relevant to our area.

Our seven gallery spaces allow us to simultaneously focus on stages of artistic development that promote a diverse programming schedule to reflect differing community relevance and needs while maintaining a context in contemporary art on a provincial and national scale. Our primary exhibition spaces serve to elucidate



SHARE

3



and further current trends in contemporary art from established regional, provincial and Canadian Artists through solo and curated group exhibitions. The impetus of these spaces is to provide a stage for the development of emerging artists' and their practices by offering artist talks, round table discussions, workshops, catalogues and through direct communication between artists of varying backgrounds and cultures. Concurrent exhibitions are typically geared towards artists who are self-defined as mid-career artists with specialized training in their field, recognition from their peers and a demonstrated commitment to producing a substantial body of work. One related change in our gallery operation is the restoration of a bi-annual *call for submissions*, a venture which puts all artists on the same 'playing field' towards the participation in solo and curated group exhibitions.

Significant impetus has been put towards our education programs over the past year. I am pleased to announce a new partnership with the Carlstrom Family who have enabled us the freedom to extend our programming including our art materials budget and outreach activities. A continued success story, the newly designated *Carlstrom Family Green Space* is an interactive gallery and self-directed studio located on the second level of the facility. With this sponsorship we unveiled a new program, *Art for the Curious* (Page 14), utilizing the pre-determined School Improvement Planning meeting days to engage the region's youth and foster future artists and cultural supporters. These programs communicate context and concepts behind contemporary and historical works of art to cultivate visual literacy and present opportunities for beginners and

professionals to learn art concepts, techniques and materials. We have been working closely with teachers from both the public, County and separate school division, home school groups, and social organizations in the city in

This flagship program has been so successful that over the course of one year, the attendance to the Carlstrom Family Green Space has skyrocketed by an astonishing 309%!

addition to renewing and strengthening relations with our partners at the Grande Prairie Regional College. These ties provide a constant flow of feedback on our educational activities as a means to better meet the needs of the teachers and students so that we remain relevant to the core curriculum as it relates to our current exhibition schedule.

I would like to take this opportunity to thank the Board of Director's for their continued dedication and hard work in making the Art Gallery of Grande Prairie



the cultural centre of the Peace Region. Our Board have exhibited a superior level of dedication and enthusiasm at Board meetings and sub-committee meetings as well as volunteering their time to our programs and events throughout the year. In particular, I would like to thank Kendra Davis, who is completing her first year as Chairperson and has worked extremely hard leading and shaping our Board. As a newcomer to this city, it is an remarkable feeling to know that there are people in the community who care enough for the arts to make it a priority. In my experience, this is unique and should be applauded.

As you have witnessed, the Art Gallery of Grande Prairie staff and volunteers have pulled together to present an incredibly ambitious schedule of exhibition and education programming. With the construction of 18,000 square feet of gallery space comes the inevitable challenge of managing and operating the facility and the services we provide. An art gallery is inherently a front-end public space and it is often overlooked that the research, organization, and implementation of every exhibition happens behind the scenes. It's amazing to consider the Art Gallery of Grande Prairie has only eleven staff members overseeing each aspect of this organization from curating and installing quarterly exhibitions to maintaining and developing a permanent collection of over 700 artworks, to an extensive exhibitions, education and outreach program throughout Northern Alberta, as well as taking care of the day to day administrative duties, marketing and advertising of the gallery, applying for grants, managing volunteers, hosting receptions and special events and contributing to fundraising endeavours. Without the dedicated support of my incredibly hardworking staff and gracious volunteers, we would not have been able to provide our services to the community.

I hope you enjoy this annual report which is as much a yearbook as it is a statistical analysis of how the Art Gallery of Grande Prairie spent its time and funding. I would like to end off by thanking all of the artists, gallery members, and program participants for their enthusiasm. With your future appreciation and support we will continue to make the gallery an intellectually stimulating and inviting place for all.

Griffith Aaron Baker
Director / Curator

EDUCATION AND PUBLIC PROGRAMMING

Art education at the Art Gallery of Grande Prairie enriches our community, encourages diversity and inspires creative learning.

The Art Gallery of Grande Prairie's public programming aspires to be comprehensive and inclusive of all community members. Our goal is to provide access to contemporary and historical visual arts and professional artists for all, regardless of age, mobility and financial capacity. Unique programs serve as a flagship for the gallery as they provide context and meaning to viewers and enable them to understand art forms from a personalized perspective. This is achieved through self-guided and professional interpretive tours, artist presentations, workshops, professional development opportunities, strategic partnerships and special events. All programs are influenced by our rotating exhibition schedule.



LEARN

6

INTERPRETIVE PROGRAMS



Interpretive Programs provide greater access to the content of the exhibitions so that the artworks may become more meaningful to viewers.

Programs address various segments of the gallery's broad audience base including those with less experience in contemporary art and consist of tours and workshops that are designed to interpret and animate the content of the gallery exhibitions and to expand upon the ideas raised by them.

Interpretive tours currently focus on youth and school groups by maintaining strong partnerships with the Grande Prairie Public, County and Catholic School Boards, home schooling bodies and other diverse community-based organizations such as the Canadian Mental Health Association, Alberta Health Services and Rotary House.

In 2014-15 we facilitated a total of **79 individual programs** at the art gallery including **59 interpretive programs and tours** for **1255 students and guests**.



ARTIST PRESENTATIONS

Artist talks are scheduled in conjunction with current exhibitions and are offered to provide further insight into the influences, motivation, process and history of the artist and the exhibition on display. Talks are meant to provide a valuable context that encourage a greater understanding of contemporary art.

In 2014-15 we facilitated **five artist presentations** with a total of **151 visitors** to the art gallery.

Artist Presentation and Performances with Tony and Steve Bloom

April 15th & 16th, 2015 (*Two Programs*)

The Bloom brothers presented the *Landbouys* exhibition at the Art Gallery of Grande Prairie, followed by a percussion sound performance utilizing the natural sounds of the sculptures on display.

70 Participants



Artist Talk and Film Screening with Tanya Harnett

Saturday, September 27, 2014

1:30 – 3:30 pm

Artist Tanya Harnett presented her research and exhibition, *The Lebret Residential Petroglyphs* in conjunction with a screening and discussion of the film, *We Were Children* (2012, 88 min.). Harnett is a First Nations artist and professor in the Department of Art and Department of Native Studies at the University of Lethbridge.

14 Participants

TEA CEREMONY (in Conjunction with the Exhibition, *Foundling*)

November 19th and 26th | 1:00pm—2:00pm

December 3rd, 10th and 17th | 1:00pm—2:00pm

January 7th and 14th | 1:00pm—2:00pm

November 29th and January 17th | 1:00pm—4:00pm

This special program was inspired by the exhibition and publication *Foundling* by visiting artist Michèle Karch-Ackerman. Nine Tea Ceremonies presented guests with a tea service using the cups and saucers on display as part of the exhibition. An essay outlining the content and influence of the exhibition was read aloud during the ceremony creating a quiet, contemplative space for guests to reflect on the themes and history of the exhibit.



43 Participants Total



An Artist Reads: Tina Martel

Saturday, February 7, 2015 | 2:00pm – 3:00pm

Exhibiting artist, Tina Martel read from her graphic novel *Not in the Pink* and provided a walkthrough and artist talk of her exhibit *Not in the Pink: the creative process*.

15 Participants

In Conversation with Grant Berg

Thursday, March 12, 2015 | 7:00pm – 8:30pm

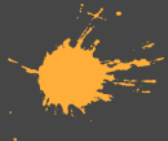
Grande Prairie Sculptor, Grant Berg provided an in-depth artist talk followed by a tour of his stone carving techniques and materials and his relationship with the late Inuit master carver Paul Qayutinnuaq.

9 Participants



LEARN

9



WORKSHOPS

Much like artist presentations, workshops provide conceptual and hands-on training as a means to provide further insight into the processes of art making in relation to specific exhibitions.

In 2014-15 we facilitated **three artist workshops** with a total of **34 participants** to the art gallery.

Swan Puppet Making Workshop with Puppet Maker Mandy Kozie

Saturday, May 3, 2014 | 1:00 pm – 4:00 pm

In Collaboration with the Grande Prairie Century Play

In celebration of the City of Grande Prairie's 100th Anniversary, participants were invited to make a swan with their Family.

20 Participants

3D Printer Workshop and Interpretive Tour with Oksana Kryzhanivska

Friday, August 22, 2014 | 2:00pm - 6:00pm

Saturday, August 23, 2014 | 9:00am - 1:00pm

Participants created their own sculptural work using a 3D printer with exhibiting artist Oksana Kryzhanivska, Ph.D Candidate Computational Media and Design at the University of Calgary. The workshops featured the start to finish process of creating a sculptural work using a 3D printer followed by an in-depth walkthrough with the artist through her interactive sculptural installation, *Raw*, at the Art Gallery.

8 Participants Total

Stone Carving Weekend Workshop with Grant Berg

Saturday, March 21 & Sunday, March 22, 2015 | 10:00am – 5:00pm

Participants used soapstone to carve unique stone sculptures. Exhibiting artist Grant Berg guided individuals through the process of chiseling, filing, sanding and oiling to reveal the stone's natural beauty. No previous art experience was required.

6 Participants

COMMUNITY ART

Community art special events and projects focus on supporting exploration and discovery through the use of aesthetically rich and easily accessible materials while engaging simultaneously with various senses (vision, hearing, touch, smell). Often collaborating with other organizations, these 'pop-up' programs react quickly to current educational trends and the changing needs and circumstances within the community.

In 2014-15 we facilitated **five Community Art Special Events** with a total of **314 participants** to the art gallery.

Senior's Art Event

June 5, 2014 | 12:45pm – 4:00pm

During Seniors week the art gallery of Grande Prairie teamed up with the Grande Prairie Public Library to provide an in-depth interpretive tour of all exhibitions currently on display at the gallery.



15 Participants

Alberta Culture Days 2014

Collage Party!

Saturday, September 27, 2014 | 1:00pm - 4:00pm

The Collage Party! was presented as an opportunity for artists and art appreciators of all ages to celebrate the annual Alberta *Culture Days*. The gallery also featured art activities in the Carlstrom Family Green Space, our interactive gallery, including a community art project where each visitor was invited to contribute.

Alberta Culture Days
September 26-28, 2014
Discover • Experience • Celebrate

72 Participants



LEARN

11



A Journey Through Time

Saturday, October 25, 2014 | 1:00pm - 4:00 pm

In collaboration with the Grande Prairie Public Library's 75th Birthday and Grande Prairie's past 100 years celebrations, the Art Gallery of Grande Prairie presented a full day of programs influenced by the history of our community. Reading, poetry, art and cultural activities were featured in several exhibits throughout the Teresa Sargent Hall in the Montrose Cultural Centre.

153 Participants

Integrated Arts Retreat

The Integrated Arts Retreat program is a custom designed educational initiative that promoted individual and group learning. Participants enjoy a full day retreat space for an extraordinary experience of making and sharing art in a nurturing environment. Engagement with our current exhibitions and take-home hands-on art projects were included as suitable to the group.



LEARN

12

2 Programs

74 Participants

THE CARLSTROM FAMILY



Month	Attendance
April '14	220
May '14	139
June '14	252
July '14	379
August '14	369
September '14	377
October '14	417
November '14	553
December '14	234
January '15	422
February '15	610
March '15	894
TOTAL	4,866

The Green Space is an interactive gallery and self-directed studio space located on the second level of the gallery. Since 2009, visitors of all ages have had the opportunity to enjoy responding to the Art Gallery's current exhibitions and themes through free art activities that are designed to encourage reflection, creativity and inspiration.

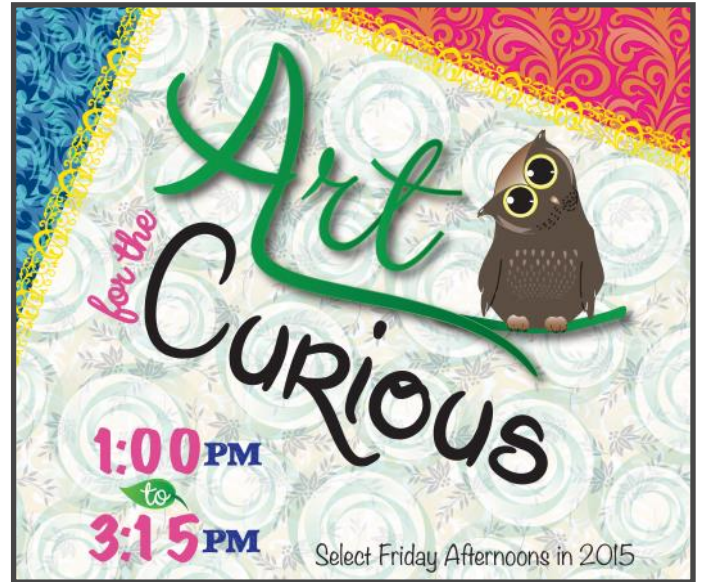
In 2014 - 15 there was **4,866 visitors** to the Green Space and we're excited to see those numbers grow as more people make the Green Space a regular part of their life and their experience at the Montrose Cultural Centre. The art projects in the Green Space feature activities for a variety of skill levels and are created for all age groups, from toddlers to senior citizens.



ART FOR THE CURIOUS

January 16th, January 30th, February 13th, February 27th, March 13th, March 27th
1:00 pm - 3:15 pm
Ages: 6 - 12 years old

A pilot program for the Art Gallery of Grande Prairie, *Art for the Curious* is a program that combines a facilitated tour with a take-home hands-on project inspired by the gallery's current exhibitions.



6 Programs (2014-15)
58 Participants Total

Room for All: A Community Art Celebration
Saturday, February 21, 2015 | 1:00pm – 4:00pm

THANK YOU, GRANDE PRAIRIE !

Hundreds of Carlstrom Family Green Space visitors have created art inspired by and in response to the Art Gallery of Grande Prairie's exhibitions.

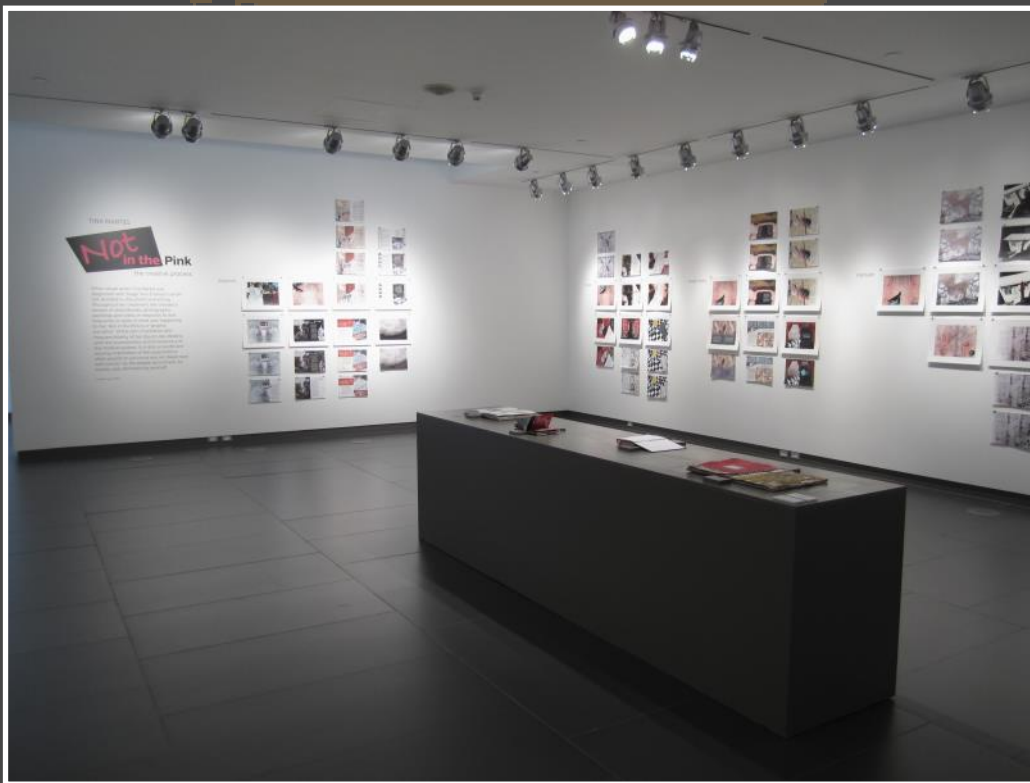
On February 21st, the Art Gallery of Grande Prairie celebrated our community's creativity and valued contributions by the many families and visitors who have made the program, a vibrant gathering space for all.



153 Participants

EXHIBITIONS

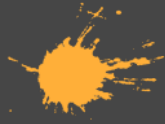
Curatorial projects encompass programs and activities that challenge and change perceptions, provide insight, reveal issues, and contribute to the understanding of contemporary art practice, knowledge of art history and the potential of an art form to push the boundaries of the gallery walls and permeate the lives of our viewers. Our annual exhibition schedule is arranged with local, provincial, national and internationally established artists, collectives, permanent collection exhibits and guest curators that address various issues that infuse the regional and international.



With seven exhibition spaces, the Gallery has continued to provide engaging exhibitions, artists' talks, round table discussions, lectures, slide presentations, professional development opportunities, special events and festivals.

EXPERIENCE

15



Tony Bloom: Landbuoys

April 17, 2014 - June 29, 2014

Opening Reception: Thursday, April 17, 2014 | 7:00 pm

Curated by: Robert Steven (Art Gallery of Grande Prairie)

Buoys have been used throughout history in bodies of water to warn against the hidden dangers of reefs, strong currents and underwater obstructions. In the exhibition Landbuoys, Tony Bloom references buoys as artifacts left stranded by



vanishing lakes, receding reservoirs, retreating geological seas or melting glaciers. Bloom metaphorically evokes these as sentinels warning of impending danger to an environment under threat, and the consequences of water as a diminishing resource.

The impetus For the work originally came while scrambling high on the mountains near his Canmore home in Canada's Rockies. Bloom was struck by the presence of fish fossils underfoot and the realization that he stood on terrain once located at the bottom of a vast inland sea. Similarly he became enamored of erratics; those massive boulders carried by glaciers and deposited

in disparate locations miles from their origins. Less a mystery than a delight, for Bloom they represent a confirmation of the power of unseen Forces. Reflecting that time preserves some things and not others, the concepts of climate change and the economies of natural order encroach upon and inform his imagination and imagery.

Rhythmic by nature, Bloom's work is both constrained and liberated by the structural, musical, and mathematical fundamentals of the series.

Thresholds and contradictions between materials are balanced; functional and non-functional qualities are investigated. and the constraints of technology are challenged. Some spherical pieces seem to defy the logic of gravity as they careen around to unlikely positions. Others appear too weighted to move but effortlessly roll within their restraining horizons emitting deep audible echoes of eons past.

Allan Harding MacKay: Selina and the Horse Rescue

April 17, 2014 - July 6, 2014

Opening Reception: Thursday, April 17, 2014 | 7:00 pm

Curated by: Doug Wills (Art Gallery of Grande Prairie)

Selina and the Horse Rescue is comprised of six large format mixed media works created in the artist's signature style of literal imagery executed in oil and chalk pastels, wax, oil wash and ink jet on paper. Combining works from two separate bodies of work creates a narrative that poses the question of the relationship between the portrait subject and the grand scale drama of a horse rescue, artistically developed from a source newspaper image.



Included in the exhibition is a video/sound work that examines the portrait subject Selina in a series of short video clips in real time and slow motion, distorted by the reflections of a glass bottle placed in the foreground. The sound track featuring an oboe and various music was composed from sampling internet sources.

Selina Martin, the subject for the portraits, is a Toronto musician/composer. The Horse Rescue works are based on an image from the Toronto Star newspaper found at a coffee shop and re-photographed as a source for the finished works.



EXPERIENCE

17



Home Is Where the Art Is

April 24, 2014 - August 3, 2014

Opening Reception: Thursday, April 24, 2014 | 7:00pm

Curated by: Doug Wills (Art Gallery of Grande Prairie)

The Art of the Peace Juried exhibition, titled *Home Is Where the Art Is* is 100 days of art celebrating Grande Prairie's centennial. The exhibition features contemporary, local artwork from members of the Art of the Peace Visual Arts Association. Art of the Peace is a regional visual arts organization representing artists throughout the Alberta and British Columbia Peace country. This exhibition is open to all members of the organization and was juried by an independent jury to select a showcase of contemporary art from the region. The exhibition featured both two-dimensional and three-dimensional artwork in a variety of mediums.

30 Exhibiting Artists:

Dan Arberry | Joyce Benson | Grant Berg | Leslie Bjur | Dale Brocke | Eileen Coristine | Debbie Courvoisier | Corinne Cowan | Lloyd Dykstra | Angela Fehr
Carmen Haakstad | Linda Henderson | Lydia Hibbing | Ken HouseGo | Carrie Klukas
Janice Kretzer-Prysunka | Sharon Krushel | Lynn LeCorre | Kimberly Leonard | Becky McGladdery | Lynn Nordhagen | Mary Parslow | Patricia Peters | Suzanne Sandboe
Kiren Niki Sangra | Jim Stokes | Dale Syrota | Marjorie Taylor | Tannis Trydal
Christina Wallwork

EXPERIENCE

18



Emplir le Vide (Filling the Void)

July 3, 2014 - August 27, 2014

Opening Reception: Thursday, July 17, 2014 | 7:00 pm

Curated by: Todd Schaber (Art Gallery of Grande Prairie)

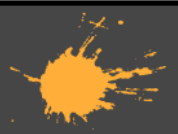
In Collaboration with the Alberta Foundation for the Arts and Regroupement Artistique Francophone de l'Alberta (RAFA).

This exhibition is an eclectic group of paintings, photographic and mixed media works created by artists that are of French Canadian heritage and are living, working, and base their art practices in Alberta. The artists create work that is unique to their specific interests and artistic direction *filling the void* that speaks to the thriving francophone and bilingual community in Alberta.

The exhibition consists of seven artists: Daniele Petit-Chatelet, Doris Charest, Jean-Rene LeBlanc, Patricia Lortie, Rachelle Bugeaud, Sabine Lecorre-Moore, and Sylvie Pinard. Each artist submitted a selection of their work and, through a jury process, three pieces were chosen from each artist to be included in the exhibition.

The Regroupement Artistique Francophone de l'Alberta (RAFA) is a provincial arts service organization and the official voice of Alberta's francophone arts and culture community. Its mission is to bring together French-speaking artists and arts and culture organizations to ensure the development and vitality of all forms of artistic expression in Alberta.

As the official voice of francophone arts and culture, RAFA represents and protects the interests of artists and organizations in dealings with political and community bodies. It supports professional training and development and promotes the efforts of its members to create, produce, present and distribute works within Canada and abroad. It complements the work of the province's arts and culture organizations by providing artists with resources, programs and services that are not otherwise available. It maintains a network for communication amongst its members and with other Canadian organizations that have similar goals. It serves as a forum for collective action by artists and arts and cultural industry workers.





Herb Sellin: 45 Years - A Journey Through Realism to Abstraction

July 14, 2014 - October 11, 2014

Opening Reception: Thursday, July 17, 2014 | 7:00 pm

Curated by: Doug Wills (Art Gallery of Grande Prairie)

Herb Sellin was born in Grande Prairie, Alberta and grew up on a farm near Spirit River, Alberta. He has been painting full-time for more than 45 years. His landscapes and portraits grace the walls of hundreds of offices and homes throughout North America and Europe. Internationally, he is best known for his life-size portrait of the former Prime Minister of Canada, the late Rt. Hon. John G. Diefenbaker.

His initial field of study at the Alberta College of Art & Design was in advertising and graphic arts. Searching for an art form more lasting than advertising, Herb began

painting full-time. He was greatly influenced by Tom Thompson, the French impressionists, and the fauvists. His work is marked by his sense of brilliant color, design and composition coupled with his dramatic use of light and shade.



SPIRITS OF THE ROCKIES series: These artworks are from a series of more than 24 paintings entitled

Spirits of the Rockies which have recently been completed with the assistance of a generous grant from the Canada Council for the Arts. The paintings are the artist's spiritual response to the power and majesty of the Canadian Rockies, the undulating repetitious contours of the foothills and the vast loneliness of the rolling prairies.

In creating the paintings the artist imagined his spirit merging with that of the landscape. He in turn hopes the work will generate an uplifting experience within the spirit and soul of the viewer inspiring them to sing and dance with the designs and colorful rhythms on the canvas.

Oksana Kryzhanivska: *RAW*

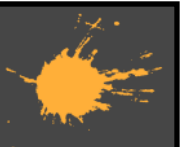
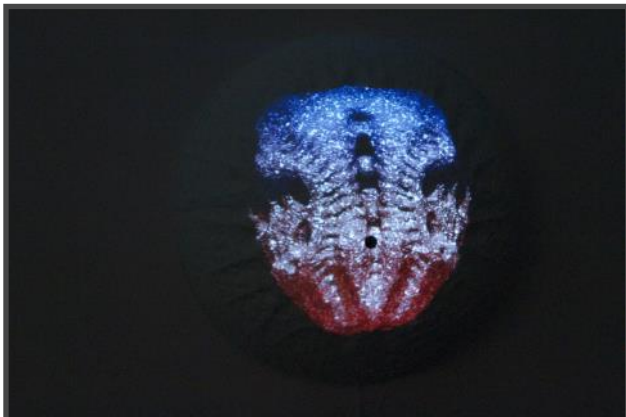
August 21, 2014 - November 16, 2014

Opening Reception: Thursday, August 21, 2014 | 7:00 pm

Curated by: Todd Schaber (Art Gallery of Grande Prairie)

As a PhD candidate in Computational Media and Design graduate program at the University of Calgary, Oksana shifted her artistic focus from sculptural work reflecting the relationship of the human body and technology to the exploration of technology as an art medium. Her research interests include tactile interaction, embodiment, motion, non-verbal communication, perception, and analyzing a visitors experience to art. *RAW* presents the viewer with a notion of the female body augmented and transformed by manufacturing technology such as machining and 3D printing and strikes a poignant observation on the positive and negative outcomes of integrating systems.

Sponsored by:



EXPERIENCE

21



Catherine Hamel: 6 points of resilience

August 29, 2014 - November 16, 2014

Curated by: Todd Schaber (Art Gallery of Grande Prairie)

Exile is often studied from the point of view of suffering. This project frames the subject to embrace the moments of joyful survival when the uprooted are received in the hosting context. Memory is manipulative. A playful dialogue is undertaken, oscillating between drawing, writing and making to discover and reframe the experience of forced displacement that is often anchored in longing to conditions of receiving. Making, drawing and writing are the ways of expelling the memories in the body. They are the means to distort, to dilute; not as a weakness of something strong, but as a strengthening of something weak.

6 points of resilience. 6 women, some men, create a dialogue between the foreign and the local. 6 intersections, 6 views, 6 moments that tell stories where the conditions for roots to sprout occur. Part autobiographical, part biographical, parts are imagined realities. 6 threads, they will be woven by one into 6 frames; part drawing, part painting, part stitching. To draw a stitch is an idea. To make a stitch is an action.

Stories often have beginnings, middles and ends. This weavers voice likes to seep out of this contained order. It often gets confused and relishes, indulging in the loss. It gets bored with the restrictions of words and the restraint of the channel from which it has to emerge. It deviates. It withholds in silence. Annoyed, it avoids. It shuns words and draws. It shuns making and dances.



These stories cannot be accurately told, but constantly attempted. They are about lives misremembered. There is safety in speaking the intimate to a public, the public that never knows if it is revelation or imagination. How a story changes when it is told. How it changes and is rediscovered when it is re-told; when it is written; when it is scripted to be performed; when it is intellectualized; danced in the dark; told to a lover. It changes most when it is told to an indifferent lover...

These stories live in memory, in bodies and are slowly unraveled as they are discovered, rediscovered, remembered and misremembered. These are a few excerpts of these stories; a move, a nervous gesture, a mischievous push; a playful pull to displace and replace the details. They are stories retold with a different highlight, from a different angle, with different forgetfulness.

Michèle Karch-Ackerman: *Foundling*

October 23, 2014 - January 18, 2015

Opening reception: Thursday, October 23, 2014 | 7:00 pm

Curated by: Doug Wills (Art Gallery of Grande Prairie)

Michèle Karch-Ackerman tells the story, stitch by stitch, of her family history. She has built an art practice around acts of caring: using art to soothe the physical and psychological suffering of others, suffering that often occurred many years before she was born. She has honoured the often brief life of pioneer babies (*Sweet Breath of Trees*); offered comfort to the young men who met violent ends in WWI (*The Lost Boys*); and asked forgiveness of the Dionne Quints for their stolen childhoods (*Springtime Story of a Little Flower School for Girl Saints*).

In 1929, at seventeen years of age, her grandmother became pregnant and was sent to an institution in Montreal called Misericordia – a home for unwed mothers run by an order of Catholic nuns. There are few details. She was given a new name. She wore a black veil over her face. She had to look down when walking in the halls. Her initials were cut out of her handkerchiefs.

In *Foundling*, Karch-Ackerman strives to make the world a more understanding and sympathetic place. This exhibition honours the secret lives of unwed mothers who fled to institutions like Misericordia across Canada from the 1920s to the 1960s. One hundred sleepers from a vintage 1950s pattern form the curtains that once hung in the living rooms of these girls' homes have become the central element in this installation.



EXPERIENCE

23



Kevin Sonmor: The Utilitarians

October 23, 2014 - January 18, 2015

Opening reception: Thursday, October 23, 2014 | 7:00 pm

Curated by: Doug Wills



EXPERIENCE

Kevin Sonmor's work pushes the boundaries between the historical conventions of landscape painting and the contemporary aesthetic of the abstracted landscape. An inspired student of Flemish painting, his visions are dark and atmospheric, yet filled with familiar still-life objects. These objects float through Sonmor's rich, painterly landscapes, creating powerfully intriguing works that hover between contemporary and historic painting traditions.

In his new body of work, *The Utilitarians*, Sonmor muses on the conventions of historical subjects including marine, romantic landscapes and still lifes. Sonmor uses these familiar historical practices, though slightly shifting many of their known properties, such as colour and space.

Where once these types of paintings depicted a state's military might or a land owners wealth and property, Sonmor incorporates these subjects and brings them into the 21st century while capturing the feeling of Northern European (Vanitas) still life paintings of the 16th and 17th centuries.

Jeff Nachtigall: Cinnamon and Censorship

November 26, 2014 - January 18, 2015

Curated by: Tessa Embelton

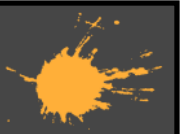
Cinnamon and Censorship is an exhibition that brings together Jeff Nachtigall's Cinnamon series with his piece entitled *Partially Censored #2*. The mixed-media works present a league of unique misfits. They appear to have been drawn from of a child's imagination, and indeed Nachtigall, a Saskatoon-based artist, created these pieces based on his own childhood illustrations. Are the characters good or bad, friend or foe, animal or vegetable? It is up to the viewer to decide the nature of these colourful personalities.



From the Collection of:



Alberta
Foundation
for the Arts



EXPERIENCE

25

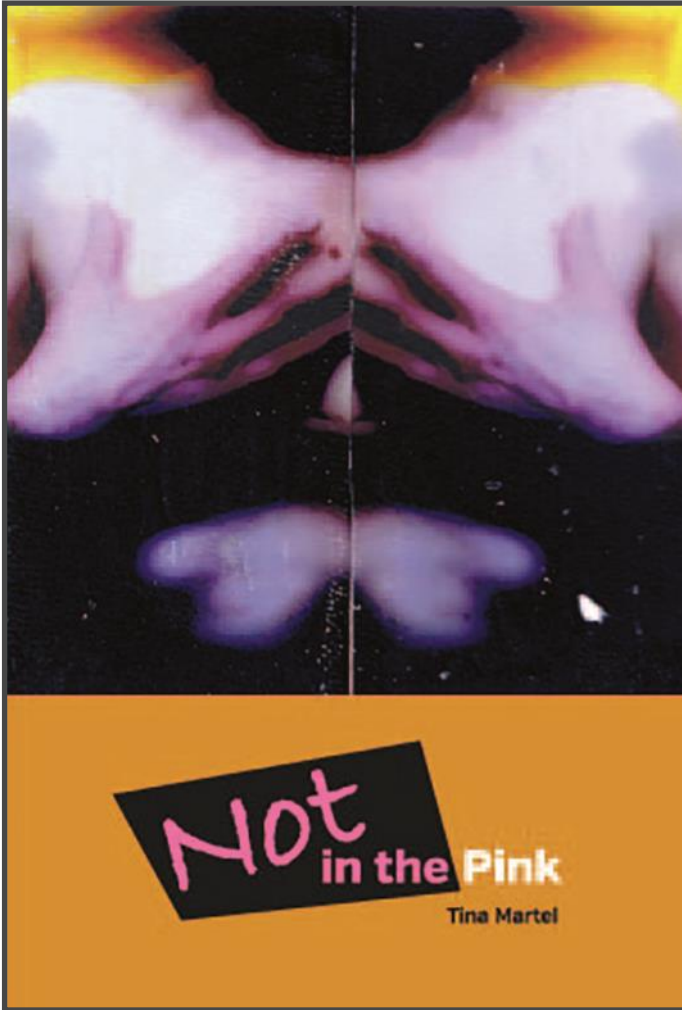


Tina Martel - Not in the Pink: the creative process

November 26, 2014 - February 15, 2015

Opening Reception: Wednesday, November 26, 2014 | 7:00 pm.

Curated by: Doug Wills



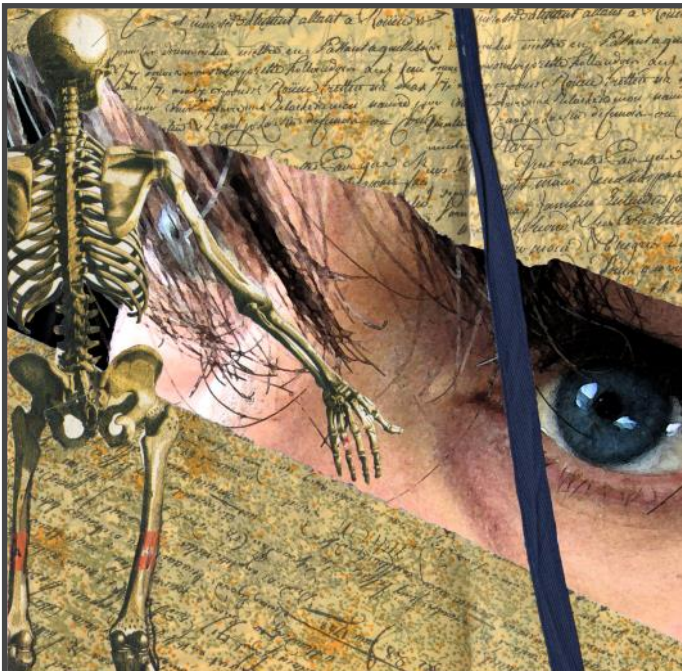
When visual artist Tina Martel was diagnosed with Stage Two B breast cancer she decided to document everything. Throughout her treatment she created a stream of sketchbooks, photographs, paintings and video, in response to and frequently in spite of what was happening to her. Not in the Pink is a “graphic narrative” of the pain, frustration and frequent hilarity of her day-to-day dealing with the eccentricities and bureaucracy of the medical system. It is also a candid and moving exploration of the expectations often placed on you once you are diagnosed with cancer: by the people around you, by society and ultimately by yourself.

Sponsored by:



Maggie and Fraser Pajak

Lyle Carlstrom,
Professional
Legal Corporation



EXPERIENCE

26

Ron Spickett: A Selection from the Judas Series

November 26, 2014 - April 26, 2015

Opening Reception: Wednesday, November 26, 2014 from 7 - 9 pm

Curated by Tessa Embleton

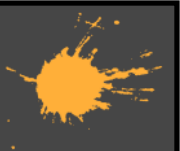


Ron (Gyo-Zo) Spickett is a Calgary-based artist, poet, and ordained Buddhist lay-priest. The Judas Series is a collection of Ecclesiastic paintings that exhibit the artist's interest in using spiritual imagery to explore the essential nature of the human condition. The paintings are at once iconic and archetypal: bold in size and title, but with the imagery touching upon something more universal. Through Biblical narratives the artist is inviting us to consider the importance of the individual experience. An experience that, like the figures themselves, is complex, ambiguous, and multifaceted.

From the Collection of:



Alberta
Foundation
for the Arts



EXPERIENCE

27



Stories in Stone: Paul Qayutinnuaq & Grant Berg

January 28, 2015 - April 26, 2015

Opening Reception: Wednesday, January 28, 2015 | 7:00 pm

Curated by Todd Schaber

Grant Berg met the late Inuit artist, Paul Qayutinnuaq in Fairview, Alberta in 1994. Qayutinnuaq's large, intricate soapstone carvings captured Berg's attention: a carving of a narwhal was the first piece Berg purchased.

The two artists shared a common connection when it came to their interest in three-dimensional form. Over time, Berg became inspired by Qayutinnuaq's work and began utilizing some of his carving techniques as well as purchasing stone for his own carvings.

Berg commissioned an Inuit-inspired chess set, to be paid for one or two pieces at a time. It was during this time that Qayutinnuaq, sadly, became ill and eventually passed away. That was the last Berg heard of the chess set.

Berg tells the story of contacting Qayutinnuaq's wife, Susan, to purchase more stone. He was understandably saddened by Paul's passing and asked Susan if it was still possible to acquire some stone. Susan said 'of course' and invited Berg to Fairview to retrieve the stone from Qayutinnuaq's studio.

There was a winters worth of snow blocking access to the studio and Berg offered to shovel a path to the studio, realizing in the process, that Susan had not been out to the studio since Paul passed away. Berg shovelled to the door and asked Susan if she wanted to enter first. She said 'No, I think you should'. Berg pushed the door open and there on the studio bench was a lineup of nine substantially completed chess pieces, waiting for Berg to take over.

This exhibition finally brings together the interwoven lives and work of these two artists.



EXPERIENCE

28

Sponsored by:



Margaret Shelton: Block Prints

January 28, 2015 - April 26, 2015

Opening reception: Wednesday, January 28th, 2015 | 7:00 pm

Curated by Tessa Embleton

Margaret Shelton (1915-1984) was a Calgary based artist with a deep passion for the Alberta landscape. Her block prints illustrate the diversity and beauty of nature, and they often portray the way we interact within it. Rather than express landscape in the romantic and painterly way that was popular at the time, Shelton's interpretations are direct, honest, and detailed. Her contributions to the development of printmaking in Canada are significant, having created hundreds of block prints in her half-century career as an artist. This exhibition presents a brief visual insight into how Shelton captures and interprets the Alberta culture through printmaking.



From the Collection of:



Alberta
Foundation
for the Arts



EXPERIENCE

29



Jeremy Hof: Morass of the Arduous

January 28, 2015 - April 26, 2015

Opening Reception: Wednesday, January 28, 2015 | 7:00 pm

Curated by: Todd Schaber

Jeremy Hof was born in Grande Prairie, Alberta in 1977 and currently lives and practices art in Vancouver. He holds a Bachelor of Fine Arts from Emily Carr University of Art and Design and is the national winner of the 2008 RBC Canadian Painting Competition.

The essence of Hof's labour intensive practice is focused on the relationship between the mediums of painting and sculpture from an art historical and a formal perspective. Merging the two disciplines results in fresh works that possess both visual aesthetics and conceptual complexity. By confronting the commonly held separations of these particular artistic mediums, Hof's work raises questions about artistic expressions and the conditions which contemporary forms of art are connected and given meaning.



EXPERIENCE

30

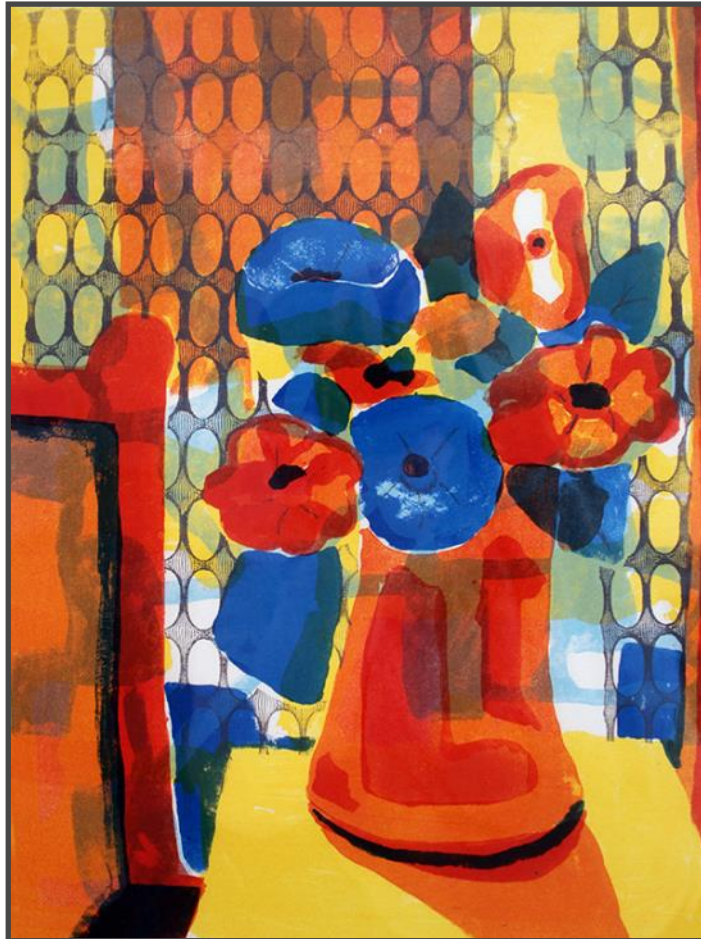
Le singe est sur le table

February 22, 2015 - April 26, 2015

Curated by Griffith Aaron Baker

Still life refers to the depiction of an arrangement of everyday objects. A popular genre since the beginning of Common Era (CE), the still life endures as a pillar in artistic training and contemporary art practice. The tradition has evolved widely over the centuries where images of fruit, flowers, decorative vessels and utilitarian objects were carefully composed to advocate religious or moral ideologies through the use of symbolism or iconography.

The Art Gallery of Grande Prairie's permanent collection contains artworks created primarily by Albertan artists which have been acquired through purchase or donation. The collection currently stands at over 600 works of art comprised of two distinct components: Historic and Contemporary Canadian Art. Over the years the gallery has amassed individual pieces and bodies of work in many mediums including ceramic, painting, photography, woodworking, sculpture, tapestry, fibre arts, multimedia works and video.



Why have a permanent collection? Galleries maintain a collection of artwork to preserve the advancement of life-long learning in arts, culture and heritage. Exhibiting artworks and artefacts demonstrates the gallery's commitment to fostering knowledge in our local and regional history, art education / art history and art practice of Alberta artists, creating an understanding and appreciation of Alberta and Canadian Art in general. The collection exists to preserve and acknowledge our heritage and the cultures that make us who we are.

Exhibiting Artists:

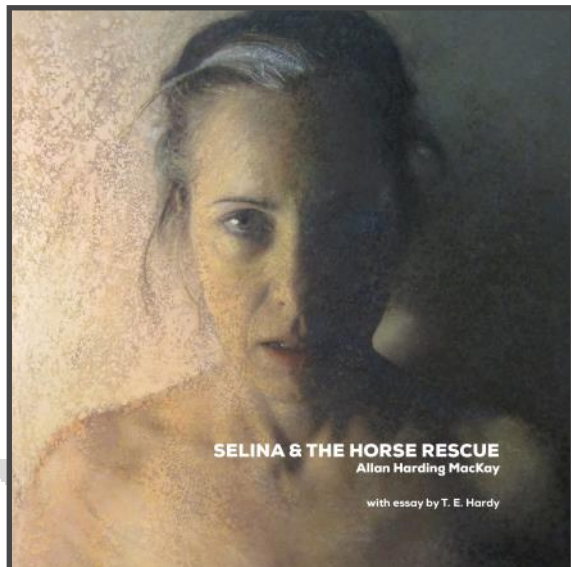
Sheila Craibley | Sue Fisher | David Garneau | Elizabeth Ginn | Pat Hunt | Marc Siegner | John Snow | Arlette Spencer



EXPERIENCE

31

PUBLICATIONS



Title: Selina & the Horse Rescue: Allan Harding MacKay

Publisher: The Art Gallery of Grande Prairie (2014)

Text: T. E. Hardy: Sheer and Solid Ground: Selina & the Horse Rescue

Catalogue Design: Define Design

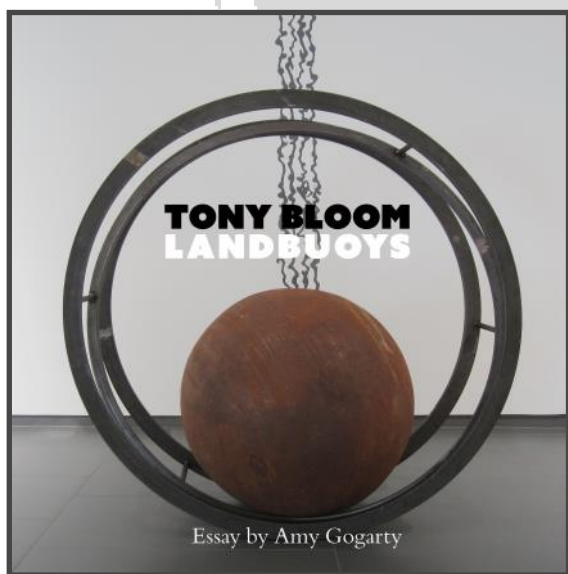
Photography: Allan Harding MacKay

Additional Photographs: Art Gallery of Grande Prairie

Printer: Kallen Printing Inc. - Calgary, Alberta

ISBN: 978-0-9877278-8-6

Organized in conjunction with the Museum of Contemporary Art (Calgary) with generous assistance of Jarvis Hall Fine Art.



Title: Tony Bloom: Landbuoys

Publisher: The Art Gallery of Grande Prairie (2015)

Text: Amy Gogarty: Time, Space and the Instant of Actuality

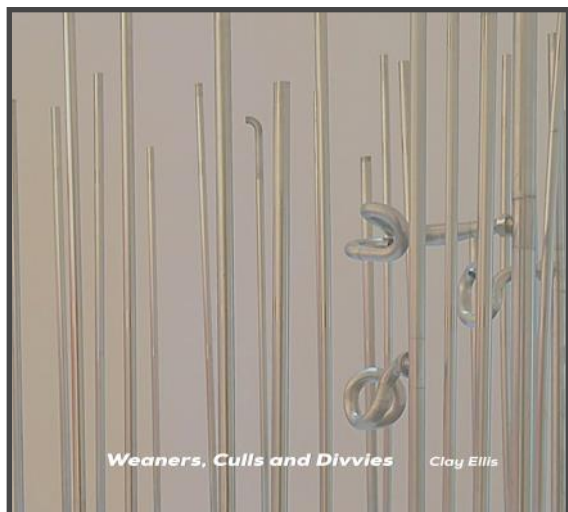
Catalogue Design: Define Design

Photography: Tony Bloom; Art Gallery of Grande Prairie

Additional Photographs: Ken Lumbis

Printer: Kallen Printing Inc. - Calgary, Alberta

ISBN: 978-0-9877278-9-3



Title: Weaners, Culls and Divvies - Clay Ellis

Publisher: The Art Gallery of Grande Prairie (2014)

Text: Mary Reid: Perceptions, Disconnections and Transitions (Weaners, culls, and divvies in the work of Clay Ellis)

Exhibitions Coordinator: Jennifer Bowes

Catalogue Design: Define Design

Photographer: Rob Ganzeveld

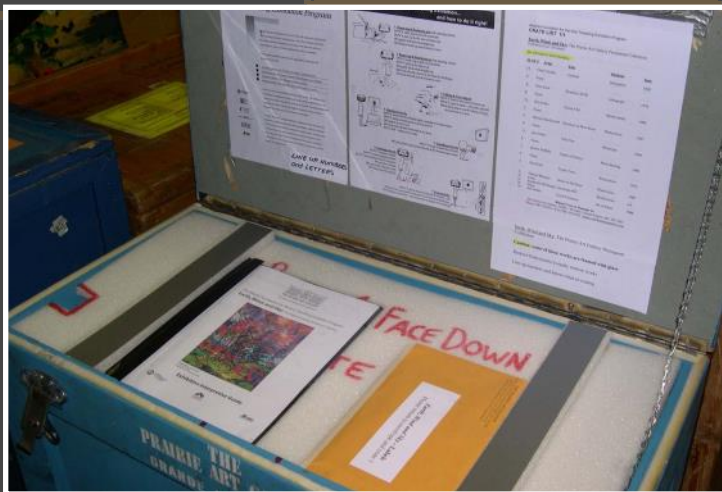
Additional Photographs: Clay Ellis, Doug Wills

Printer: Friesens Corporation - Altona, Manitoba

ISBN: 978-0-9877278-6-2

TRAVELLING EXHIBITIONS (TREN)

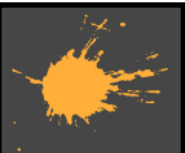
The Travelling Exhibition Program (TREN), supported by the Alberta Foundation for the Arts (AFA) provides every Albertan with the opportunity to enjoy visual art exhibitions in their community with exhibitions curated by four cultural organizations including the Art Gallery of Grande Prairie. Since 1986, the program has promoted cultural access to schools, libraries, cultural centres, community art galleries and hundreds of thousands of people across the province.



For the 28th Consecutive year, was the Art Gallery of Grande Prairie has provided high calibre exhibitions and educational resources to "Region 1" with 138,018 visitors throughout the year.

The significant change this year, the decision to move from a 12 month booking period to 10 month booking period to allow each venue to host an individual exhibition for a full four weeks with a fifth week allowed for shipping to the next venue.





TRAVELLING EXHIBITION

The Travelling Exhibition Program (Trex) remains one of the most successful cultural programs for the art gallery and the province of Alberta, with hundreds of communities served. The following statistics present a complete picture of Year 28. A wildly successful year, 100% of all available exhibitions were booked.

Zone 1 - Year 28

TOTAL ATTENDANCE	138,018
Total Number of Communities Served:	23
Total Number of Venues Served:	35
Number of Exhibitions Circulated:	20
Individual Exhibitions Mounted:	90
Artists Represented:	121
Artist Visits to Communities:	1
Total Artist Fees paid:	\$13,500
Community Volunteers:	35

2014 - 2015 Participating Venues

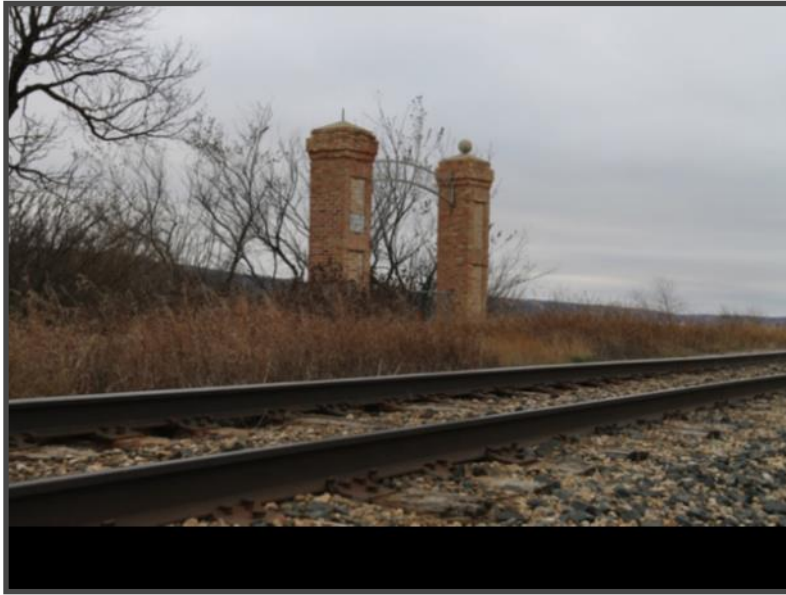
Alexander Forbes School (Grande Prairie), Art Gallery of Grande Prairie, Beaverlodge Elementary School, Beaverlodge Regional High School, Dawson Creek Art Gallery, Ecole Routhier School (Falher), Ecole St. Gerard School (Grande Prairie), E.E. Oliver Elementary School (Fairview), Fairview High School, Fox Creek High School / Library, Grande Cache High School/Library, Grande Cache Tourism, Grande Prairie Public Library, Grande Prairie Regional College Glass Gallery, Grimshaw Library, Hines Creek Composite High School, Hinton Library, Hythe Public Library, Kennedy Elementary School, Grimshaw, Lloyd Garrison School (Berwyn), Manning Elementary School, MacKenzie Crossroads Museum, Nampa Library, OPK School (Wabasca), Peace River High School, Peace River Library and Cultural Centre, QEII Hospital (Grande Prairie), Rockylane School (Fort Vermillion), Savanna School Spirit River, Spirit of the North School High (Level), Springfield Elementary School (Peace River), St Kateri School (Grande Prairie), St. Andrews School (High Prairie), T.A. Norris School (Peace River), Wabasca Public Library

Tanya Harnett: The Lebret Residential Petroglyphs

July 14, 2014 - September 29, 2014

Opening Reception: Thursday, July 17, 2014 | 7:00 pm

Curated by: Todd Schaber

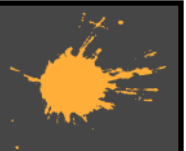


In 1884, the Indian Act was passed and the Qu'Appelle Industrial School was built in Lebret, Saskatchewan. History would have it that my great-great grandfather would attend the school in 1888. In 1932, the school was destroyed by fire and in 1935; the Lebret Residential School was built to replace it. In 1973, the school was signed over to a First Nations school board.

Pressures slackened for those students who attended, but not the memories of abuse. The gates at the entrance of the school were made available and were subject to the marks made by those children who were forced to attend. These petroglyphs place that history solidly in the past, but should forever be remembered as a dark part of Canadian government policies.

~Tanya Harnett

This exhibition presents 21 pieces which photo exposé what Tanya Harnett produced during the summer of 2013 along with one archival photograph of her great great grandfather.



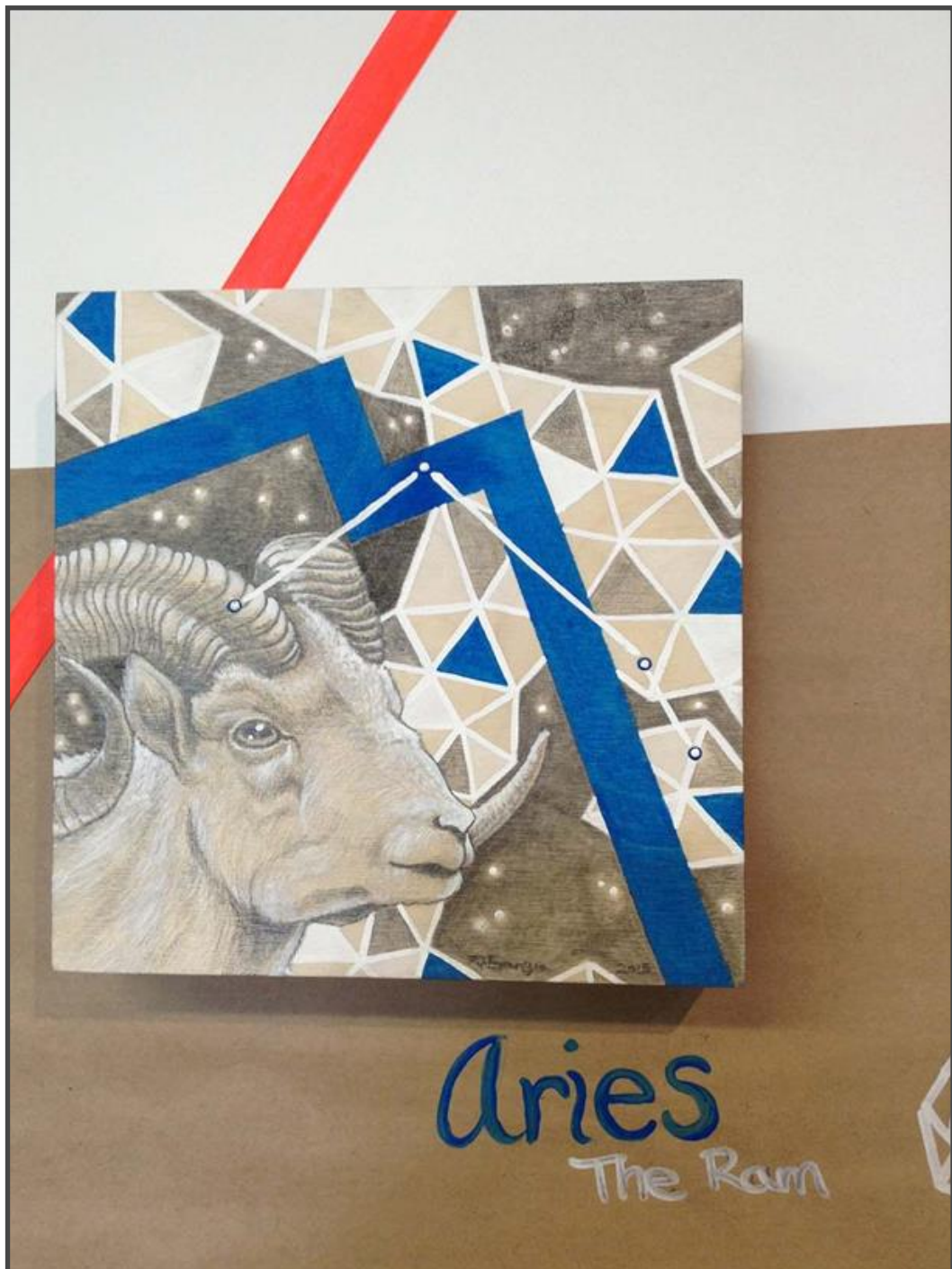


Kiren Niki Sangra: Stargazer

Curated by Todd Schaber

Kiren Niki Sangra's newest body of work explores the use of graphite on wood with pops of neon colour as a way to illustrate a selection of constellations. Along with the drawings, small embroideries are used to illustrate certain constellations. The collection combines the interests of drawing, colour, and ornamentation with a love of the natural world, animals, and stargazing.

This exhibition presents eleven drawings on wood panel using graphite and acrylic paint and ten embroideries on canvas.



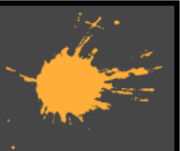
Winter on the Wapiti: Robert Guest

Curated by Todd Schaber

Winter on the Wapiti can be seen as Robert Guest's visual journal, created during a five-year project (1984 – 1989) along the river banks of the Wapiti River, far from urban life. Sketches were made, day and night, and then finished in Robert's studio-cabin near the river. The paintings are made with alkyd paint on 8" x 10" panels. Guest is an avid outdoorsman with a deep connection to the natural beauty of the land and has spent his lifetime documenting this relationship in his paintings.

This exhibition was first displayed at the Art Gallery of Grande Prairie in 1989 and was recently donated by the artist to the gallery's permanent collection.

The collection covers about ten miles along the Wapiti River from Iroquois Creek in the east to Calihoo Creek in the west. His cabin was situated near the Pinto Creek junction on the Wapiti River about half way along this visual journey. Guest painted a total of 67 artworks to document this journey but for this exhibition twenty pieces were selected that represent the entire length and time frame of this project. This exhibition will also include a map of the area in which this visual journey takes place.





STREET PERFORMERS FESTIVAL

The Annual Street Performers Festival brings to Grande Prairie a world of jugglers, acrobats, musicians, installation artists, facepainters, and many other assorted entertainers from around the world. Organized and hosted by the Street Performers Festival Committee, the festival is a free community event in partnership with businesses, service and NFP organizations and individuals alike. In 2014 the Art Gallery of Grande Prairie presented a “mobile” TRES exhibition, which took place in the back of a 24’ Box Truck generously loaned to the gallery by Visa Truck Rentals.

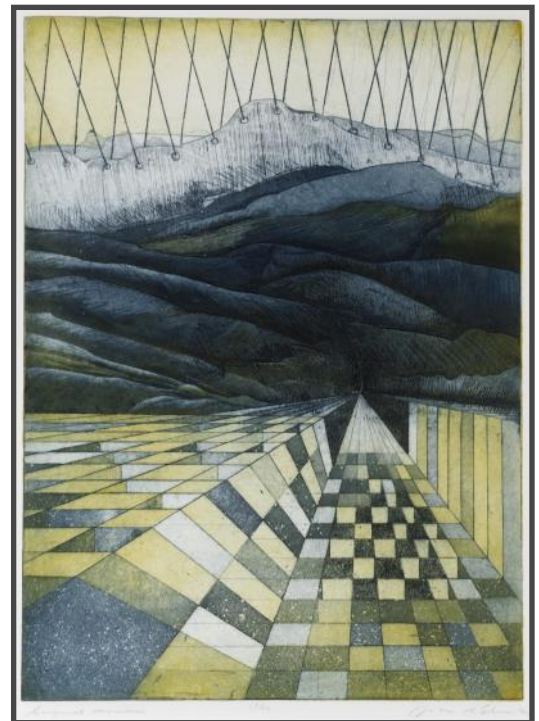


In 2014-15, the festival drew out over 20,000 visitors which includes thousands who viewed the exhibition below.

ON DISPLAY - The Printmakers: Abstract Prints from the 1960’s and 70’s

Curated By Todd Schaber

This exhibition presents 21 artworks by Alberta printmakers who were influential during the print movement of the 1960’s and 1970’s. This was a very prolific time for these artists who were specialists in the art of printmaking and who worked in several disciplines of printmaking. Disciplines include woodcut, block print, lithograph, silkscreen, etchings, clay print, linocut, and mono print. These artists all had their own unique style with the focus of the exhibition on abstract imagery.



Artists:

John K. Esler | Marion Nicoll | Maxwell Bates | Deli Socilotto | Ted Faiers | A.S. Kozub | Aurdy | Carol Breen | T. Sasaki | Toshi Yoshia | Lucien Compagnol | Vivian Lindoe | E.J. Ferguson | Kay Angliss | Kenneth Samuelson | John Snow.

34th ANNUAL ART AUCTION



ART
AUCTION
34

aggp.ca

Saturday, April 12, 2014
7:00 pm

The 34th Annual Art Auction was an unforgettable event celebrating our community as well as the arts and culture of the Peace Region.

The Art Auction is an exclusive look at specially selected, original artworks created by local, regional and national artists. We were pleased to present outstanding works of art with a silent auction and live auction program.

The evening began with a champagne reception and a selection of wines and liqueurs to suit different tastes. The 203 guests who were present were served a variety of delicious appetizers at their table, including vegan, dairy-free, and gluten-free options. The evening concluded with sweet desserts, coffee and tea.



Our Sponsors



Table Sponsors

Aeo Reedstenhouse Inc.
Aurora Eye Care
Dobko & Weaton
Eldor Trusses
MCB Enterprises
Pomeroy Hotel & Conference Centre

Gift in Kind

Alberta North Auction Services
Esquires Coffeehouse
Popik Photography
The UPS Store
Vintage Wine and Spirits



SUPPORT

39



Auction Committee

Jean Bauer
 Susan Bibby
 Nadine Dueck
 Pam French
 Melanie Jenner
 Carrie Klukas
 Brandi Martin
 Korreena Tucker



Participating Artists:

Dan Arberry | Tammy Baduk | Grant Berg | Leslie Bjur | Ross E. Bradley | Carol Bromley Meeres | Cheryl Brown | Dennis Brown | Eric Cameron | Bibi Clement | Sue Cloake | Leona Cochrane | Tina Dale | Michelle Davidson | Lloyd Dykstra | Missy Finlay | Lena Gilje | Liz Gogal | Marilyn Gourlay | Kane Gray | Robert Guest | Carmen Haakstad | Jon Havelock | Vicki Hotte | Ken HouseGo | Melanie Jenner | Candice Johnson Popik | Carrie Klukas | Janice Kretzer-Pryunka | Charlette LaCount | Lynn LeCorre | Emily Lozeron | Darla Dawn Lukac | Ken Lumbis | Angie Maksymetz | Tina Martel | Tammy McGee | Mary Mottishaw | Helena Mulligan | Mary Parslow | Patricia Peters | Laurel Rohne | Suzanne Sandboe | Todd Schaber | Tanya Sedore | Larena Shakotko | Cathy Stafford | Jim Stokes | Evelyn Suter | Marjorie Taylor | Christy Teasdale | Shanda Thiessen Fuller | Sandy Troudt | Shirly A. Weiss



MEMBERSHIP

We had 43 members in 2014, whose support has allowed the gallery to become what it is today. We offer sincere thanks to everyone who invests their time and money in supporting the Gallery's service to the community through membership.



Lifetime Members

Dr. Margaret Kirwin & David Biltek

Fred & Ruth Estlin

Carmen & Gail Haakstad

Robert Steven

David and Charlotte Lacount (Canadian Tire)

Margaret Bowes (Capastrano Holdings)

Maryse Maurice

Pam French (Professional Account Management)

Rob & Shauna Strasdin

Frank Szafranski

Andy and Nedine Stewart

Individual

Jeff Donald

Valerie Ditch

Wanda Edey

Michelle Gairdner

Terry Gorgichuk

Jean Kimble

Barbara Nelson

Dave Nuth

Ken Riley

Candice Popik

Jean Thornton

Kate Thon

Lorrie Trudeau

Household

Marnie Blair & Family

Jean & Jerry Bauer

Michelle & Patrick Davidson

Kendra & Nathan Davis & Family

Carol-Lee Eckhart & Family

Cam & Rhonda Henderson

Miriam Mahnic & Family

Diana McConachie & Family

Scott McGee & Family

Jocelyn & Michael Morgan

Mary Mottishaw & Family

Joanne Perrott & Family

Lorne Radbourne & Family

Nick and Annette Radujko

Murray & Christine Quinn

Seniors & Students

Dennis J.A. Brown

Patricia Collins

Joyce Davis

Gordon Mackey

VOLUNTEERS

The gallery has benefited from the work of **62 volunteers** this year, who have donated **1368 hours** of their time. Every gift of time, large or small is precious and valuable to us, so we thank each volunteer equally.

This year, volunteers led the *Art Auction 34*, *TREX installations*, *Board of Directors initiatives*, *education events and programming* and played a key role in the operations of the gallery.

No one who achieves success does so without acknowledging the help of others. The wise and confident acknowledge this help with gratitude.

Volunteer Name	Project / Event	Contributed Hours
Jean Bauer	Board of Directors / Art Auction 34	42.5
Kyle Datingaling	Collage Party	4.5
Michelle Davidson	Board of Directors / Collage Party	28
Kendra Davis	Board of Directors / Multiple Events	132
Elaine Deines	Multiple Events / Education Programs	20
Candace De Vuyst	Multiple Events	22
Nadine Dueck	Art Auction 34	30
Jeff Donald	Board of Directors	25
Twyla Exner	Multiple Events / Prep and Installation	74
Pam French	Board of Directors / Art Auction 34	82
Jennifer Ferris	Room for All Event	10.5
Jeff Fudge	Casual Gallery Assistant	12
Anusha Khepar	General Education Prep	14
Carrie Klukas	Board of Directors / Art Auction 34	35
Dwight Logan	Board of Directors	7.5
Katherine Moe	Collage Party	9

VOLUNTEERS

Volunteer Name	Project / Event	Contributed Hours
Brandi Martin	Art Auction 34	30
Dave Nuth	Board of Directors	44
Candice Popik	Board of Directors / Art Auction	29
Lorne Radbourne	Board of Directors	25
Nick Radujko	Board of Directors	41
Ken Riley	Board of Directors	32
Korreena Tucker	Art Auction 34	30
Victoria St. Jean	Receptions / Gallery Administration	55
Sheila Shaw	Multiple Events	16.5
Murray Quinn	Board of Directors	32
Lois Young	Gallery Attendant / Multiple Events	485.5

TOTAL VOLUNTEER HOURS 1368



Lois Young - Gallery Ambassador

Once again we thank our most frequent supporter, *Lois Young*, who volunteered **485.5** hours primarily as the gallery's Ambassador, meeting and greeting our guests in our reception area as they began their excursion through the gallery. Lois has contributed at least ten hours a week in this capacity and is now celebrating an amazing five full years with the gallery. In addition to her role as the face of the gallery, she regularly assists with our receptions, education programming and special events. On behalf of the Staff and Board of Directors of the Art Gallery and Grande Prairie—we thank Lois for her dedication, contribution and wonderful sense of humour!

SPONSORS & FUNDERS

Corporate Sponsors



Funders



Canadian Heritage

Patrimoine canadien



Canada Council for the Arts

Conseil des Arts du Canada

PARTNERS

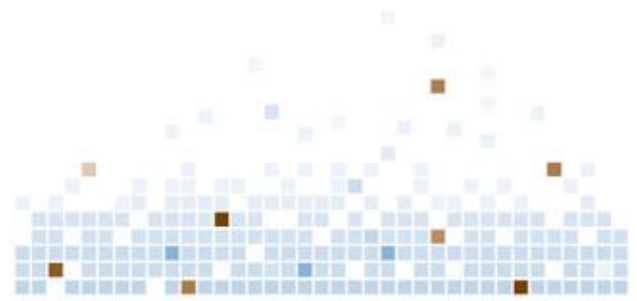
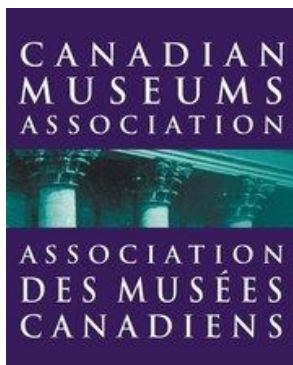


Alberta Culture Days
September 26-28, 2014
Discover • Experience • Celebrate



Grande Prairie International
**STREET
PERFORMERS
FESTIVAL**

presented by
ATB Financial™



discover the possibilities

GENERAL STATISTICS

Total Gallery Attendance

Month	Attendance	
	2013 - 14	2014 - 15
April	1,000	1,161
May	973	988
June	1,439	1,335
July	1,175	1,653
August	922	1,091
September	1,054	1,020
October	1,011	1,252
November	762	1,625
December	668	813
January	880	1,592
February	837	1,835
March	919	2,069
TOTAL	11,640	16,434

Travelling Exhibitions

	2013 - 14	2014 - 15
Exhibitions	22	20
Venues	100	35
Attendance	194,843	138,018

Website Visits

2013 - 14	2014 - 15
30,109	32,111

* Included in Total
Gallery Attendance

Education*

	# of Programs	Attendance
Interpretive Tours	59	1,255
Artist Presentations	5	151
Workshops	3	34
Community Art & Special Events	5	314
Carlstrom Family Green Space	Continuous	4,866
Art for the Curious	7	211
TOTAL	79	6831

Members / Volunteers

	2013	2014
Members	135	43
Volunteers	85	62
Volunteer Hours	1,178	1,368

Other*

Program	Attendance
Weddings	552
Meetings	135
Photo Shoots	34

Street Performers Festival

2013 - 14	2014 - 15
20,000	22,000

BOARD

Current Board as of March 2015:

Kendra Davis	Chair	Michelle Davidson
Nick Radjuko	Vice-Chair	Jeff Donald
Dave Nuth	Treasurer	Ken Riley
Murray Quinn	Secretary	Candice Popik
Pam French	Past Chair	Lorne Radbourne

2014 - 2015 Former Board

Jean Bauer	Former Secretary
------------	------------------

STAFF

Current Staff as of March 2015:

Griffith Aaron Baker	Director / Curator
Douglas Wills	Associate Curator
Todd Schaber	Manager / Curator of Travelling Exhibitions
Sabine Schneider	Curator of Education and Public Programs
Tessa Embleton	Assistant Curator
Melanie Jenner	Communications Coordinator
Jennifer Fisher	Events Coordinator
Rob Swanston	Chief Preparator
Elaine Deines	Gallery Attendant
Bonnie Gidney	Bookkeeping
Lois Young	Ambassador

2014 - 2015 Former Staff

Susan Bibby	Bookkeeping
Adrienne Smith	Gallery Attendant
Mike McGinnis	Gallery Attendant





For more information about the Art Gallery of
Grande Prairie visit:

www.aggp.ca

[p] (780) 532-8111

[f] (780) 539-9522

[e] info@aggp.ca

#103, 9839 - 103 Avenue
Grande Prairie, AB
T8V 6M7

Facebook:
Art Gallery of Grande Prairie

Twitter:
[@ArtGalleryofGP](https://twitter.com/ArtGalleryofGP) [#visitaggp](https://twitter.com/visitaggp)