

FORD TOURNEO CUSTOM



Go Further

Go Further

These two words capture the spirit of Ford and our commitment to you. We go further so that you can, too.

2-9 Ford kinetic Design

Ford kinetic Design is the reason why our vehicles look more exciting than ever before. Bold, dynamic lines that create energy in motion.

10-13 Quality



Quality and durability are built into your Ford at every step. After many years of service it will feel as good – and drive as beautifully – as it did the day you picked it up.

14-15 Green



Using advanced Ford ECONetic Technology, we're committed to creating vehicles with improved fuel economy, reduced CO₂ emissions and a lower overall cost of ownership.

16-17 Safe



Ford's safety technologies are constantly evolving and improving. We build the latest safety measures into our vehicles to help you feel protected and secure.

16-21 Smart



The clever use of loadspace, windscreen wipers that know when it's raining, headlights that know when it's dark – just some of the many smart solutions from Ford that make life a little easier.

22-27 Choose your Tourneo Custom

- Base
- Trend
- Limited

28-29 Enhanced versatility

30-36 Specifying your Tourneo Custom

37-38 Colour and trim

39 Making life easy





Share the occasion

With the new Ford Tourneo Custom, everyone gets the VIP treatment.



Vehicle shown is a Ford Tourneo Custom Limited (L1) in Frozen White solid body colour.

Premium leather seats

Luxurious leather seat trim elevates the Ford Tourneo Custom to a fresh level of exclusivity. (Option on Limited)





Share the journey of a lifetime

Climb aboard and experience exemplary performance that is surprisingly light on your pocket.



Vehicle shown is a Ford Tourneo Custom Limited (L2) in Tectonic Silver special metallic body colour (no charge option on Trend and Limited).

Auto-Start-Stop

The latest Ford test figures show that Auto-Start-Stop can reduce fuel consumption and CO₂ emissions by up to ten per cent in heavy traffic with frequent stops, and by up to five per cent in mixed driving conditions.





Share the memories

With a multitude of flexible seating configurations, Tourneo Custom helps make every outing unforgettable.



Vehicle shown is a Ford Tourneo Custom Limited (L2) in Tectonic Silver special metallic body colour (no charge option on Trend and Limited).

Space to spare

The new long wheelbase (L2) Tourneo Custom offers even more luggage room and unbeatable space for passengers and their belongings.





Share the experience

Settle into Tourneo Custom's roomy and luxurious interior and enjoy the latest in premium class travel.



Vehicle shown is a Ford Tourneo Custom Limited with Medium Stone leather trim and Ford radio/CD player with Ford SYNC and DAB audio system. (leather seats optional on Limited)

*Ford Emergency Assistance operates in over 30 European countries. This feature is designed to work when paired with a compatible mobile phone that is with you when any airbag is deployed or the fuel pump is shut off. See your local Ford website for latest information.
Note The Bluetooth® word mark and logos are owned by the Bluetooth SIG, Inc. and any use of such marks by Ford Motor Company Limited and its associated companies is under licence. Other trademarks and trade names are those of their respective owners.

Ford SYNC with Emergency Assistance*

The next generation of in-car connectivity. Ford SYNC lets you operate most popular MP3 players, Bluetooth®-enabled phones and USB drives with remarkably simple voice commands. Plus the Ford Emergency Assistance feature is designed to assist the driver to place a call with the emergency services. (Option)





Engineered for durability. Tested for toughness

Like all Ford Transits, Tourneo Custom has durability in its DNA. A relentless testing programme ensures that it's a vehicle that lasts.

Tow with confidence

We condensed 10 years of driving into a non-stop six month test over different road conditions, most of which was spent towing a fully laden trailer. The Tourneo Custom passed with full marks.

High-mounted headlights

Powerful projector-style headlights are located safely out of harm's way.

Multi-piece bumpers

Smart front and rear bumpers feature a multi-piece design to help keep repair costs low.

Tested for endurance

Extensive testing included a two-month maximum speed test, extreme transmission tests and demanding low-speed city drive cycles to imitate typical unforgiving delivery schedules.



Pushed to extremes

From frost-covered prototypes started up in -40°C at 4500-metre altitudes, to sun-baked vehicles towing fully-laden trailers up long inclines in 50°C heat, Tourneo Custom has been pushed to extremes.



250,000 door shuts

We subjected the doors to an intense regime of 250,000 slam cycles in real-world conditions to help ensure they will never let you down.



Obsessively driven

During its development, we test drove Tourneo Custom the equivalent of 3 million miles, including 250,000 miles with real customers. It's a vehicle you can rely on, right down to the smallest ball bearing.

12-year Ford Perforation Warranty

The new Ford Tourneo Custom owes its durable exterior to a thorough multi-stage painting process. From the wax-injected steel body sections to the water-based top coat, new materials and application processes ensure it is not only virtually solvent-free, but will retain its good looks for many years to come.



Zinc coating

Phosphate spray coat

Electrocoat

Water-based top coat

Clearcoat lacquer



Proven Duratorq diesel engine technology

Renowned for its reliability and efficiency, the Tourneo Custom's 2.2-litre Duratorq TDCi engine comes with a choice of three power and torque outputs.

10.9 m turning circle

With its impressive 10.9 m kerb-to-kerb turning circle, the short wheelbase (L1) Ford Tourneo Custom is the ideal choice for demanding city driving.



Make your journey a pleasure

With its exceptional levels of comfort, craftsmanship and refinement, and a host of thoughtful features, Ford Tourneo Custom is an absolute pleasure to drive.



Allergy-friendly interior

Ford Tourneo Custom's interior uses materials that minimise the risk of an allergic reaction. Models fitted with air conditioning also have a high-performance pollen filter to prevent dust and pollen entering the passenger compartment.

Fully-adjustable driver's seat and steering wheel

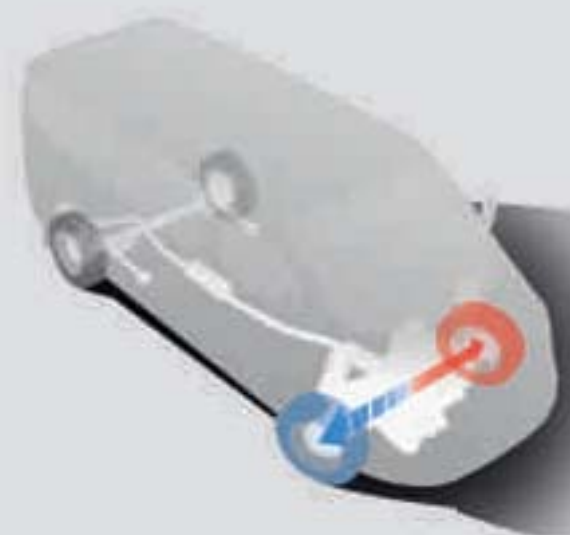
An eight-way adjustable driver's seat with armrest, and a steering wheel that adjusts to suit your height and arm length, help you find your ideal driving position with ease.



Torque Vectoring Control[®]

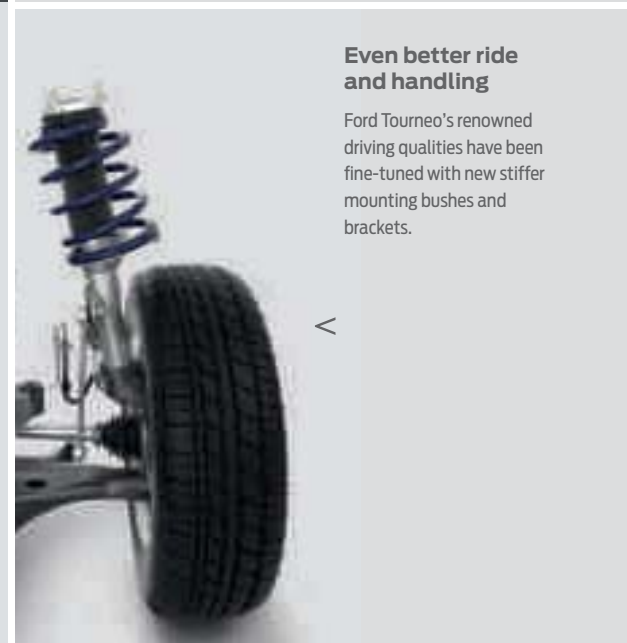
Designed to improve traction, roadholding and agility when cornering by continuously optimising the engine torque distributed to each front wheel to match the amount of grip each has available. The result is a more rewarding driving experience. (Standard)

[®]Uses sensors.



Even better ride and handling

Ford Tourneo's renowned driving qualities have been fine-tuned with new stiffer mounting bushes and brackets.



Quality designed around you

When you climb into the cab it's immediately evident the new Ford Tourneo Custom sets a benchmark for attention to detail. Great to drive, great to sit in, it boasts premium finishes and high-quality materials, without compromising everyday practicality.





Smart Regenerative Charging

Saves fuel where possible by charging the battery only when you are not pressing the accelerator.

Impressive CO₂ emissions

The latest Duratorq TDCi diesel engines are remarkably fuel efficient, with combined fuel consumption from as low as 43.5 mpg and CO₂ emissions of only 172 g/km on the L1 model

CO₂
172 g/km

Making every drop of fuel count

Ford ECONetic Technology combined with efficient aerodynamics has resulted in outstanding fuel economy across the range.



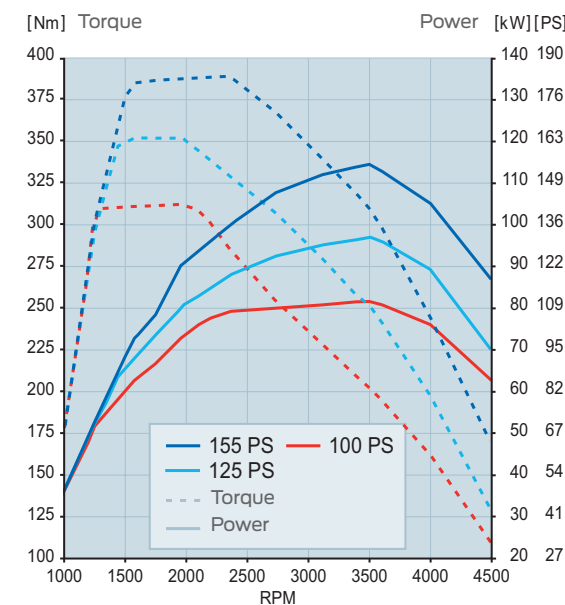
Acceleration Control

To improve fuel economy, Acceleration Control stops the driver from accelerating faster when the vehicle is empty than when it is heavily laden. (Option)

Ford ECONetic Technology

- Ford Duratorq TDCi advanced diesel engines – provide exceptional fuel economy and low CO₂ emissions
- Ford Auto-Start-Stop (see opposite)
- Ford Smart Regenerative Charging (see opposite)
- Ford Eco Mode driver information system – shows you when you're achieving optimum fuel efficiency (available from Feb 2013)
- Shift Indicator (see opposite)
- Acceleration Control (see right)
- Ford Battery Management System – improves battery life, fuel consumption and ensures ready-to-go reliability

Note The availability of Ford ECONetic Technology varies by model. Please ask your Ford Dealer for details.



Power and torque

Tourneo Custom's 2.2 Duratorq TDCi diesel engine is available in three power and torque configurations, all meeting EU Stage V LDT emission standards:

- 100 PS (74 kW)/310 Nm
- 125 PS (92 kW)/350 Nm
- 155 PS (114 kW)/385 Nm

Transmission is 6-speed across the range.

A standard front-wheel drive configuration pays dividends for you and your passengers. Take advantage of generous headroom, improved fuel economy and even more luggage space.



Shift Indicator

Advises you when to change gear for maximum fuel efficiency. (Standard)



Auto-Start-Stop

When your vehicle is idling at a standstill, the engine automatically shuts down to save fuel. When you want to drive off, the engine immediately restarts.



Wind power

All the electricity needed to power Ford's Dagenham Diesel Centre is provided by three wind turbines. With a combined maximum output of 5.9 MW, they generate around 11.4 million kWh of electricity every year, enough to power approximately 3,400 homes.

Water power

Our Cologne plant utilises hydro-electric power from Norway and Sweden. This reduces CO₂ emissions by 190,000 tonnes a year. Shipping their finished vehicles on Rhine river barges means fewer truck journeys and less fuel consumed to further reduce CO₂ emissions.



For more information on our sustainability initiatives visit ford.com/go/sustainability

Advanced protection inside and out

A full line up of passive and active safety features make use of the latest technology to protect the driver, passengers and their belongings.

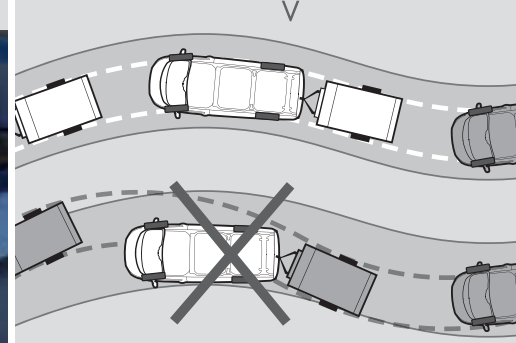
Lane Keeping Alert^{0*2)}

It only takes a momentary slip in concentration to drift out of your lane when driving on the highway. Lane Keeping Alert²⁾ is designed to recognise when you approach the road markings without using the indicator, and alerts you with vibrations through the steering wheel. (Option)



Trailer Sway Control^{*1)}

When it detects trailer sway, the system is designed to reduce engine torque and apply the brakes to the appropriate wheel(s) to help maintain control. (Requires a Ford factory-fit tow bar)



Traction Control¹⁾

If wheel slip is detected at low speed, this system can distribute more torque to the wheel with most traction.

Emergency Brake Assist⁰¹⁾

Designed to recognise an emergency braking situation and increases the pressure within the braking system to provide optimum stopping power.

Emergency Brake Warning²⁾

Front and rear indicators automatically flash during heavy braking, giving other drivers advance hazard warning.

⁰⁾Uses sensors.

^{*}Operates at speeds over 43 mph on multi-lane roads with clearly visible lane markings.

¹⁾Safety feature.

²⁾Driver assistance feature.

Impressive towing ability

With up to 1,650 kg maximum towing capacity, Ford Tourneo Custom offers impressive pulling power along with a range of safety features to help keep you and your trailer secure. From Hill Start Assist²⁾ to Trailer Sway Control¹⁾, you can tow with confidence and enjoy a safe and rewarding drive. (Commercial users may need a digital tachograph, option. A fitting kit is also available from your Ford Dealer)



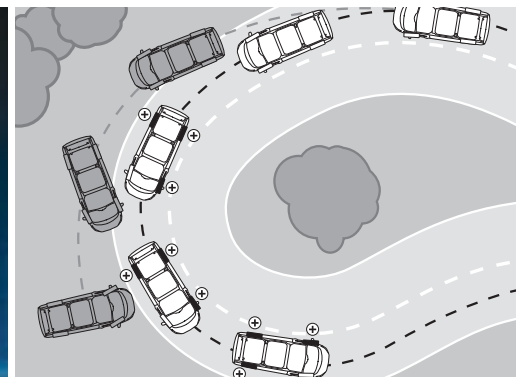
Occupant safety

Driver and passenger front airbags with seat-mounted side, head and thorax airbags and side curtain airbags¹⁾.



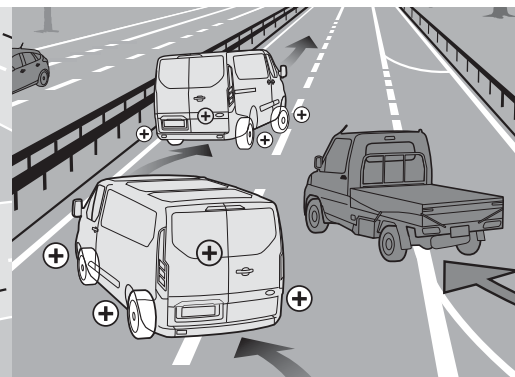
Driver Alert⁰²⁾

Designed to warn you if the system detects driving behaviour that indicates a drop in alertness levels. Initially, a warning icon is displayed in the instrument cluster, followed by a warning chime if driving alertness further declines. (Standard with Lane Keeping Alert²⁾)



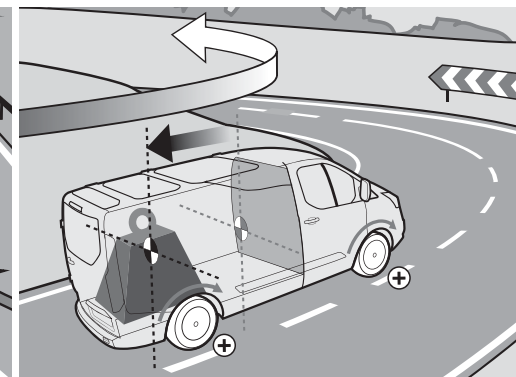
Electronic Stability Programme (ESP)⁰¹⁾

ESP¹⁾ is designed to help you maintain control in extreme driving conditions. It senses when you are deviating from your chosen line and aims to keep you on track by automatically regulating braking and engine output.



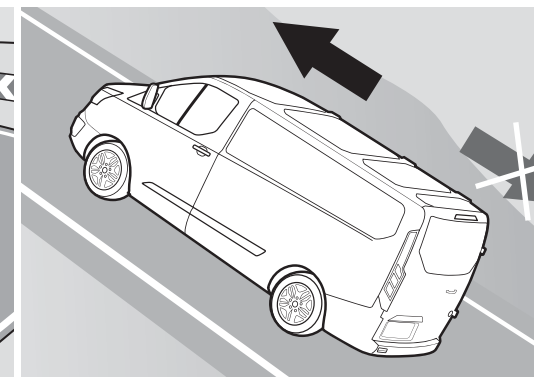
Roll-over mitigation⁰¹⁾

Designed to identify a potentially dangerous driving situation and activate the ESP¹⁾ to restore stability.



Load Adaptive Control⁰¹⁾

Designed to adjust the responses of the ESP¹⁾ system to compensate when the vehicle is unladen, partially- or fully-laden.



Hill Start Assist⁰²⁾

Designed to temporarily prevent you from rolling down a slope when you move your foot from the brake pedal to the accelerator pedal. It works in forward and reverse gears, so is ideal for towing and pulling heavy loads.

Ford SYNC with Emergency Assistance*

Enjoy hands-free communication and entertainment with Ford SYNC. The voice-controlled system allows you to play music, make and receive hands-free calls and choose contacts from your phone's contact list with remarkably simple voice commands. It will even read your incoming text messages**. Bluetooth®-enabled audio-streaming means you can stream your personal music collection directly from your mobile phone or other Bluetooth®-enabled device directly to your in-car audio system. Plus the Ford Emergency Assistance feature is designed to assist the driver to place a call with the emergency services. Ford SYNC's voice-activation means you will be able to keep your hands on the wheel and your eyes on the road.

Mobile phone

Phone book download for easy dialling and photo browsing • Text messages read-out • View call log • Caller ID • Conference calling • Mute • Call waiting • Birthday notifications

Intelligent features that make life easier

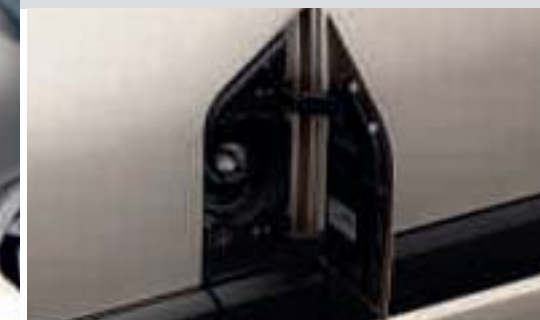
For the most connected and enjoyable driving experience, Ford Tourneo Custom comes with a wealth of useful features to help make your life a little easier.



Cruise control with Adjustable Speed Limiter

Allows you to set a maximum speed that you do not wish to exceed. (Standard on Trend and Limited, option on Base)

*Ford Emergency Assistance operates in over 30 European countries. This feature is designed to work when paired with a compatible mobile phone that is with you when any airbag is deployed or the fuel pump is shut off.
**Text messaging feature not available in all countries. See your local Ford website for latest information on both.



Ford Easy-Fuel capless refuelling system

No dirty fuel caps to touch. Plus a unique safeguard ensures nobody can accidentally fill up with the wrong fuel. (Standard)

Note The Bluetooth® word mark and logos are owned by the Bluetooth SIG, Inc. and any use of such marks by Ford Motor Company Limited and its associated companies is under licence. iPod is a trademark of Apple Inc. Other trademarks and trade names are those of their respective owners.

Note It is an offence for drivers to use a hand-held mobile phone or similar device while driving.



Audible SMS

Have your incoming text messages read to you from your connected phone, including commonly-used abbreviations and emoticons, and you can even respond with a choice of 15 preset text messages.



Bluetooth® Audio Streaming

Stream your music collection from your compatible MP3 player or mobile phone to the vehicle's audio system.



Navigation

3D map stored on SD card shows points of interest on a 5" colour screen. Also includes traffic announcements. (Option)

Emergency Assistance

Designed to assist occupants in contacting emergency services, using your Bluetooth®-enabled phone when an airbag is deployed. Only available in certain markets, please ask your Ford Dealer for details.



Rear-view camera

Select reverse and the image from the rear-view camera comes on automatically in the rear-view mirror. Marker lines overlaid on the camera image indicate where the vehicle is heading.



Parking distance sensors, front and rear

With the Ford Tourneo Custom, you won't have to pass by those more challenging parking spaces. An audible warning helps you judge the distance between your vehicle and obstacles at the front and rear, for easier parking and manoeuvring. (Option)



Power-foldable mirrors

Ideal when parking in narrow streets. (Standard on Trend, bodycolour on Limited, option on Base)





Tourneo Custom short wheelbase (L1).

Tourneo Custom long wheelbase (L2).

Smart seating solutions

The generously proportioned interior of the Ford Tourneo Custom unites space with smart versatility. It can carry nine in complete luxury, or be easily reconfigured to offer up to 6.8 cu.m, SAE, (6.0 cu.m*) of luggage space.

*L1 version.



Tourneo Custom short wheelbase 8-9 seats (L1).



Tourneo Custom long wheelbase 8-9 seats (L2).

Flexible rear seats

Each seat back can fold forward to create a flat workspace. The whole seat can fold forward again to take up minimal space. For more room, each seat can be removed. The flexibility of this new seating system can create over 30 different seating and loadspace configurations to suit any occasion.



Integrated roof rack

Holds 130 kg and, when not in use, folds level with the roof line to improve fuel economy and reduce wind noise. (Option)



Dual side load doors

Wide-opening sliding side load doors mean easy access to the passenger compartment. (Standard)



Side steps

Make getting in and out even easier, while enhancing Tourneo Custom's luxurious style. (Standard)

As flexible as you need it to be

Whatever you're carrying, from passengers and luggage to unexpected loads, the Ford Tourneo Custom is versatile enough to find space for them all. Use all nine seats to accommodate occupants in luxurious comfort. Or fold, tumble or stow the second and third row seats in more than 30 different ways to create limousine-like space or to maximise the luggage area.



Power-operated and heated driver's seat

With 10 ways to adjust the heated driver's seat, you can find your most comfortable driving position with ease. (Standard)



Privacy glass and rear window blinds

Integrated sunblinds can be easily raised to shield rear occupants from the bright sunlight. Privacy glass adds a further level of screening and sophistication. (Option on Trend, standard on Limited)



ISOFIX child seat fixing points

For enhanced passenger safety, ISOFIX child seat attachment points are available on the centre and driver's side of the second row, and the centre seat of the third row.



Base

Exterior features

- Twin sliding side load doors
- Door mirrors with blind spot eliminator and integrated side indicator
- Electrically-operated front windows with one-shot up/down on driver's side
- Headlights with courtesy delay
- Day running lights
- Glazed rear tailgate with wash/wipe
- Remote control central locking

Interior features

- Ford Radio system with steering wheel remote audio controls, AUX jack and two front speakers
- Trip computer
- Adjustable heated driver's seat with armrest
- Two 2-litre bottle holders
- Glovebox with A4 file storage
- Two 12-volt power points
- Driver and passenger lidded storage compartments on fascia
- Centre-mounted car park/toll ticket holder
- Rear courtesy lights with theatre-style dimming

- Rear map reading lights
- Side door step courtesy lights
- Rubber floor covering in rear passenger and luggage compartment

Option packs available:

Visibility Pack

- Electrically-operated door mirrors
- Heated windscreen
- Low washer fluid sensor

Storage compartment with power point and MP3 socket above instrument cluster

(Standard)

Side steps

(Standard)

Head, curtain and side airbags

(Standard)

Electronic Stability Programme (ESP)

(Standard)

Shift Indicator

(Standard)

Ford Easy-Fuel capless refuelling system

(Standard)





Trend

Exterior features in addition to Base

- Full wheel covers
- Projector-style headlights with integral cornering lights
- Body colour front bumper
- Front fog lights
- Power-foldable and heated door mirrors
- Remote control central locking with two key fobs
- Rain-sensing front wipers
- Automatic headlights
- Front and rear parking sensors

Interior features in addition to Base

- Radio/CD system with 3.5" dot matrix multi-function display, Ford SYNC with Emergency Assist* and audio streaming, USB connectivity, steering wheel remote audio controls and four front speakers
- 8-way adjustable passenger's seat with lumbar adjust
- Leather-trimmed steering wheel
- Cruise control with adjustable Speed Limiter
- Carpet floor covering in passenger and luggage compartment
- Lockable glove box
- Heated windscreen

Optional packs available:

Visibility Pack Premium

- Rear-view camera with Trailer Hitch Assist
- Lane Keeping Alert with Driver Assist
- High series instrument cluster with colour display

*Ford Emergency Assistance operates in over 30 European countries. This feature works when paired with a compatible mobile phone that is with you when any airbag is deployed or the fuel pump is shut off. See your local Ford website for latest information.

Ford SYNC with Emergency Assistance*

(Standard)

Projector style halogen headlights with static cornering lights

(Standard)

Parking distance sensors

(Standard)

Cruise control with adjustable Speed Limiter

(Standard)

Body colour front bumper with front fog lights

(Standard)

Power-foldable door mirrors

(Standard)





Limited

Exterior features in addition to Trend

- Body colour bodyside mouldings
- Body colour rear bumper
- Power-foldable body colour door mirrors
- 16" alloy wheels with locking wheel nuts
- Perimeter alarm

Interior features in addition to Trend

- Ford DAB radio/CD player with 3.5" dot matrix multi-functional display, Ford SYNC with Emergency Assist and audio streaming, USB connectivity, steering wheel remote audio controls and four front speakers
- Front air conditioning with air pollen purifier
- Rear compartment air conditioning

Option pack available:

Visibility Pack Premium

- Rear-view camera with Trailer Hitch Assist
- Lane Keeping Alert with Driver Assist
- High series instrument cluster with colour display

SYNC with Emergency Assistance* and DAB digital technology
(Standard)

Rear air conditioning
(Standard)

Body colour rear bumper
(Standard)

Body colour door handles
(Standard)

Sunblinds
(Standard)

16" alloy wheels
(Standard)



Roof base carrier, lockable*

Roof carrier is the base for various roof transportation attachments, e.g. ski carriers, bike carriers, Thule® roof box, etc. (Accessory)



Thule® roof box*

Different sized boxes protect your luggage from weather and theft. (Accessory) Shown is Thule® roof box Excellence 900 in conjunction with crossbars. (Accessory)



Enhanced versatility

Seating solutions, extra protection, greater versatility and styling accessories are all available for the Tourneo Custom.



Waeco coolbox*

High-performance boxes cool to a minimum of 1°C and warm up to 65°C. 230V AC connector integrated. Various models available also with ISOFIX. (Accessory)



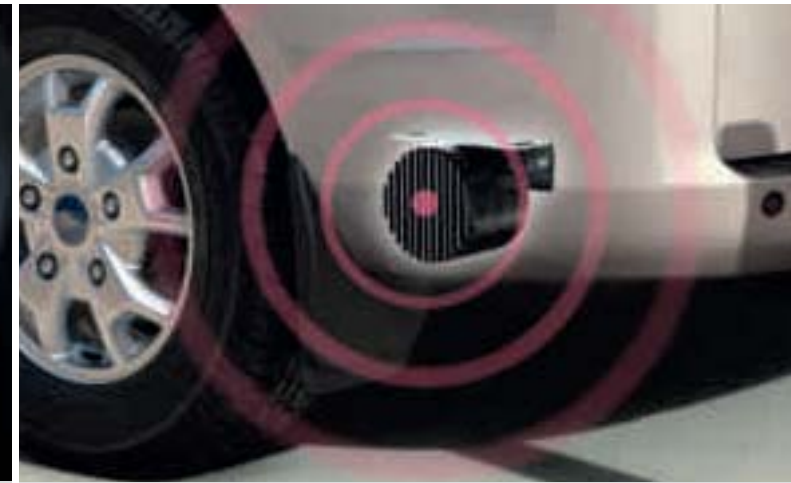
Portable Navigation

Leave your maps behind with a simple and intuitive mobile GPS navigation system. Please contact your Ford Dealer for details. (Accessory)



Engine undershield

Tough corrosion-resistant metal undershield protects engine from accidental stone and kerb damage. Easily removed for oil changes and routine servicing. (Accessory)



Bosch® reverse warning device (audible)

Linked to reverse gear. Provides an audible warning to pedestrians when the vehicle is reversing. (Accessory)



Parrot® car kits*

These Bluetooth® hands-free kits connect via the factory-fitted audio system. Shown is the Parrot® MKi9200 with 2.4" colour TFT screen, built-in voice recognition and automatic phone-book synchronisation. (Accessory)

*Item covered by third party supplier's warranty, please see back cover for details.

Note The Bluetooth® word mark and logos are owned by the Bluetooth SIG, Inc. and any use of such marks by Ford Motor Company Limited and its associated companies is under licence. Other trademarks and trade names are those of their respective owners.

Dimensions (mm)

		8-seat Tourneo	
		L1	L2
A	Overall length (excluding rear step)	4972	5339
B	Overall width (with/without mirrors)	2290/1986	2290/1986
C	Overall height*	1972-2020	1976-2022
D	Wheelbase	2933	3300
E	Front of vehicle to front wheel centre	1011	1011
F	Rear of vehicle to rear wheel centre	1028	1028
G	Side door entry width	1030	1030
H	Side door entry height	1320	1320
I	Rear tailgate entry width	1400	1400
J	Rear tailgate entry height	1340	1340
K	Loadspace between wheel arches	1390	1390
L	Loading height*	534-583	533-589
Turning circle (m)			
Kerb to kerb (Steel/Alloy Wheels)		10.9 / 11.6	12.2 / 12.8
Wall to wall (Steel/Alloy Wheels)		11.55/12.15	12.75/13.41

All dimensions (shown in mm) are subject to manufacturing tolerances and refer to minimum specification models and do not include additional equipment. These illustrations are for guidance only. *Height dimensions show the range from minimum to maximum of a fully laden, lowest payload vehicle to unladen highest payload vehicle.

Weights and loads

	Maxi- mum Power PS (kW)	Torque Nm	Gross pay- load ⁹	Gross vehicle mass (kg)	Kerb mass (kg)*	Front axle plated mass (kg)	Front axle kerb mass (kg)	Rear axle plated mass (kg)	Rear axle kerb mass (kg)	Axle ratio	Max. GTM (kg)*	Max. trailer weight braked (un- braked)	CO ₂ emissions (g/km) ¹⁰⁰	Fuel consumption in mpg (L/100 km) ⁹⁹		
														Urban	Extra Urban	Comb- ined
300 L1 Tourneo (M1)																
2.2 Duratorq TDCi 100 PS (74 kW)	100 (74)	310	902	3000	2098	1600	1219	1550	879	4.19	4400	1450 (750)	172	38.7 (7.3)	46.3 (6.1)	43.5 (6.5)
2.2 Duratorq TDCi 125 PS (92 kW)	125 (92)	350	902	3000	2098	1600	1219	1550	879	4.19	4600	1650 (750)	172	38.7 (7.3)	46.3 (6.1)	43.5 (6.5)
2.2 Duratorq TDCi 155 PS (114 kW)	155 (114)	385	902	3000	2098	1600	1219	1550	879	4.19	4600	1650 (750)	172	38.7 (7.3)	46.3 (6.1)	43.5 (6.5)
300 L2 Tourneo (M1)																
2.2 Duratorq TDCi 100 PS (74 kW)	100 (74)	310	829	3000	2171	1725	1286	1550	885	4.19	4400	1400 (750)	177	37.2 (7.6)	45.6 (6.2)	42.2 (6.7)
2.2 Duratorq TDCi 125 PS (92 kW)	125 (92)	350	829	3000	2171	1725	1286	1550	885	4.19	4600	1600 (750)	177	37.2 (7.6)	45.6 (6.2)	42.2 (6.7)
2.2 Duratorq TDCi 155 PS (114 kW)	155 (114)	385	829	3000	2171	1725	1286	1550	885	4.19	4600	1600 (750)	177	37.2 (7.6)	45.6 (6.2)	42.2 (6.7)

L1 = Short Wheelbase. **L2** = Long Wheelbase. All models are 6-speed manual transmission. **GVM** – Gross vehicle mass. The total permissible all-up weight of a rigid vehicle – i.e. with body, payload, ancillaries, fuel, oil, water, driver and crew. ***Kerb mass** – The weight of the complete vehicle and all equipment including fuel and water, but without the payload, driver or any crew. **GTM** – Gross train mass. The total permissible all-up weight of a rigid vehicle (see GVM) together with its trailer and load. ***Gross payload** = Gross vehicle mass, less kerb mass. All kerb masses quoted in this brochure are subject to manufacturing tolerances and are for models with minimum equipment. Trend and Limited models will have greater kerb masses and, therefore, lower payloads due to the increased amount of standard equipment. Any additional options specified on the vehicle will reduce the payload accordingly. ⁹⁹With quoted axle ratio. ¹⁰⁰The declared fuel consumptions and CO₂ emissions are measured according to the technical requirements and specifications of European Directive 80/1268/EEC or the European Regulation (EC) 715/2007 amended by (EC) 692/2008. Fuel consumption and CO₂ emissions are specified for a vehicle type and not for a single vehicle. The applied standard test procedure enables a comparison between different vehicle types; the specification and options selected may have an effect i.e. on vehicle weight and therefore on the emissions and fuel economy of the vehicle and also may influence the figures that appear in the individual vehicle documentation. This information is not part of any product offer made. Real world fuel consumption can vary as the fuel efficiency of a vehicle is influenced by (individual) vehicle configurations, driving behaviour, use of technical equipment such as air conditioning, as well as other non-technical factors.

Mechanical features

	Base	Trend	Limited
Brakes			
Dual-circuit, with self-adjusting servo-assistance and ABS. Front & rear discs	●	●	●
Engine and Technology			
Auto-Start-Stop**	●	●	●
cDPF (coated diesel particulate filter)	●	●	●
Acceleration Control	○	○	○
Ford Eco Mode (driver information system)*	●	●	●
Fuel tank			
80 litres	●	●	●
95 litres*	○	-	-
Ford Easy-Fuel capless refuelling system with misfuel inhibit	●	●	●
Steering			
Power-assisted steering	●	●	●
Steering column – Rake- and reach-adjustable	●	●	●
Suspension			
Front, independent MacPherson struts, variable rate coil springs, stabiliser bar and gas-pressurised shock absorbers. Rear, leaf springs and gas-pressurised shock absorbers	●	●	●
Engine Governors			
Speed Limiter – 56 mph	○	○	○
Speed Limiter – 62 mph	○	○	○
Speed Limiter – 70 mph	○	○	○

● = Standard, ○ = Option, at extra cost. *Available from February 2013 production. **Standard on all series until 28 January 2013 production, then becomes optional on Base, Trend and Limited series.

Safety and security

	Base	Trend	Limited
Safety			
Anti-lock brakes – Electronic, 4-wheel (includes rear disc brakes) ¹⁾	●	●	●
Electronic Stability Programme (ESP) ¹⁾	●	●	●
Hill Start Assist (HSA) ²⁾	●	●	●
Load Adaptive Control (LAC) ¹⁾	●	●	●
Emergency Brake Assist (EBA) ¹⁾	●	●	●
Emergency Brake Warning (flashes hazard lights under heavy braking) ²⁾	●	●	●
Roll-Over Mitigation (ROM) ¹⁾	●	●	●
Trailer Sway Control (TSC) with tow attachment ¹⁾	○	○	○
Airbag – Driver's ³⁾	●	●	●
Airbag – Front passenger's* ⁴⁾	●	●	●
Airbag – Side airbags ¹⁾	●	●	●
Airbag – Side curtain airbags ¹⁾	●	●	●
Seat belts – 3-point diagonal inertia reel (all seats) ¹⁾	●	●	●
ISOFIX – child seat 3 attachments – Centre (2nd & 3rd row) and drivers side (2nd row) seats ¹⁾	●	●	●
Fire extinguisher fixings ²⁾	○	○	-
Security			
Alarm – Perimeter	○	○	●
Immobiliser – Safeguard Passive Anti-Theft System (PATS) (Insurance-approved Category 2 immobiliser)	●	●	●
Locks – Power door deadlocks	●	●	●
Locks – Remote control central locking with one key fob	●	-	-
Locks – Remote control central locking with two key fobs	-	●	●
Locks – Passenger vehicle 2 stage unlocking (Configurable Locking Pack 2)	●	●	●
Locks – Auto relocking, doors relock after 45 seconds if no door is opened	●	●	●
Locks – Audio mislock feedback, audible signal if a door is ajar when locking activated	●	●	●
Locks – Key-operated bonnet release	●	●	●
Vehicle Identification Number – Visible	●	●	●

● = Standard, ○ = Option, at extra cost. *For details of the configurations available, please consult your Ford Dealer. **Please note:** Configurable locking must be defined at the time of order, it cannot be ordered as a Dealer-fitted option or accessory. ¹⁾Safety feature. ²⁾Driver assistance feature. ***Note: A rear-facing child seat should never be placed in the front passenger seat when the Ford vehicle is equipped with an operational front passenger's airbag.**

Exterior equipment

	Base	Trend	Limited
Design features			
Bodyside mouldings – Black	●	●	-
Bodyside mouldings – Body colour	-	-	●
Bumper – Body colour front bumper (includes front fog lights)	-	●	●
Bumper – Body colour rear bumper	-	-	●
Paint – Metallic	○	●+	●+
Wheels			
Wheels – 6½x15" steel wheels with 215/65 R15 BSW tyres	●	●	-
Wheels – 6½x16" alloy wheels with locking wheel nuts and 215/65 R16 BSW tyres	-	○	●
Wheel covers – Full	-	●	-
Tyres – Goodyear All-Weather	○	○	○
Tyres – Goodyear Mud and Snow	○	○	○
Tyres – Positive selection	○	○	○
Convenience features			
Doors – Left and right side, sliding glazed doors	●	●	●
Doors – Glazed rear tailgate with wash/wipe	●	●	-
Doors – Glazed rear tailgate with wash/wipe and body colour handle	-	-	●
Door mirrors – Blind Spot Eliminator and integrated side indicator	●	●	●
Door mirrors – Manual, self coloured housing	●	-	-
Door mirrors – Electrically-operated, heated, self-coloured housing	○	-	-
Door mirrors – Power-foldable, electrically-operated, heated (body colour housing on Limited)	○	●	●
Glass – Rear privacy glass (33% luminous transmittance)	○	●	●
Heated rear window	●	●	●
Mudflaps – Front	●	●	●
Mudflaps – Rear	○	○	○
Parking distance sensors – Front and rear. Includes front Fog Lights	○	●	●
Tow bar with Trailer Sway Control with 13-pin electrics (tachograph may be required)	○	○	○
Side step*	●	●	●
Windows – Front, electrically-operated (driver's side – one shot up/down)	●	●	●
Windows – Second row, passenger's side, flip* open	●	●	●
Windows – Second row, driver's side, flip* open	●	●	●
Windows – Third row, passenger's side, fixed	●	●	●
Windows – Third row, driver's side, fixed	●	●	●
Wipers – Front, variable interval/intermittent with electrically-operated wash	●	●	●
Wipers – Rear with auto reverse wipe and electrically-operated wash	●	●	●
Visibility Pack – Heated windscreen, washer fluid sensor, electrically-operated mirrors.	○	-	-
Visibility Pack High – Heated windscreen, washer fluid sensor, electrically-operated, heated and power-foldable mirrors, automatic headlights, rain-sensing wipers, front fog lights, cluster variable dimming.	-	●	●
Visibility Pack Premium – Rear-View Camera, Lane Keeping Alert with Driver Assist and High series instrument cluster with colour display	-	○	○
Lane Keeping Alert (includes Driver Alert)	○	○	○
Headlights – Projector style halogen reflector lights with blue highlight and cornering lights	○	●	●
Headlights – Headlight courtesy delay	●	●	●
Day running lights	●	●	●
Front fog lights	○	●	●

● = Standard, ○ = Option, at extra cost, ●+ = Option, No charge. *Available from November 2012 production.

Interior equipment

	Base	Trend	Limited
Design features			
Floor covering – Full length, easy-clean rubber	●	-	-
Floor covering – Full length, carpet	-	●	●
Audio and communications systems			
Audio – Pre-equipment pack	○	-	-
Ford radio/CD system – Integrated control panel with 3.5" starburst multi-functional display, steering wheel remote audio controls, 2 front speakers (ICE pack 1)*	●	●	-
Ford Connected Radio system – AM/FM+USB+Bluetooth®. Steering wheel remote audio controls, 2 front speakers (ICE pack 2)**	●	●	-
Ford Connected Radio with DAB – AM/FM+USB+DAB + Bluetooth®. Steering wheel remote audio controls, 2 front speakers (ICE pack 3)**	○	○	-
Ford radio/CD with SYNC – Extended integrated control panel with 3.5" dot matrix multi-functional display, steering wheel remote audio controls, SYNC with USB connectivity and Bluetooth® Hands-Free Phone with Voice Control System and audio streaming, Emergency Assist, 4 front speakers (woofers and tweeters; ICE pack 4)	○	●	○
Ford DAB radio/CD with SYNC – Extended integrated control panel with 3.5" dot matrix multi-functional display, steering wheel remote audio controls, SYNC with USB connectivity and Bluetooth® Hands-Free Phone with Voice Control System and audio streaming, Emergency Assist, 4 front speakers (woofers and tweeters; ICE pack 5)	○	○	●
Ford DAB radio/CD with Navigation and SYNC – Extended integrated control panel with 5" TFT multi-functional display, steering wheel remote audio controls, SYNC with USB connectivity and Bluetooth® Hands-Free Phone with Voice Control System and audio streaming, Emergency Assist, 4 front speakers (woofers and tweeters; ICE pack 11)	○	○	○
Convenience features			
Courtesy lights – Header-mounted, front passenger and side door step wells	●	●	●
Courtesy lights – Rear lights and map reading lights with theatre-style dimming	●	●	●
Interior lighting/battery saver – 30 minutes	●	●	●
Trip computer (timer, distance to empty, instant and average fuel consumption, average speed, outside temperature)	●	●	●
Water in fuel filter with sensor	●	●	●
Battery – Twin Improved Flooded (IF), Cold start (-20°C)	●	●	●
Tachograph – Digital, electronic, 24-hour	○	○	○
Cruise control (includes leather steering wheel, Adjustable Speed Limiting Device)	○	●	●
Shift indicator light	●	●	●
Air conditioning – Front, CFC-free, filter-air pollen purifier	○	○	●
Air conditioning – Rear (includes front air conditioning)	○	○	●
Assist handle – Over passenger's door	●	●	●

Interior equipment

	Base	Trend	Limited
Bottle holder – Twin, 2-litre bottle capacity, facia-mounted	●	●	●
Cup holder – Twin, facia-mounted, in base	●	●	●
Glovebox – With lid and A4 file storage capability	●	●	●
Heater – Recirculation	●	●	●
Heater – Rear compartment	○	○	●
Power point socket – 2 x 12V (located on instrument panel and in stowage bin)	●	●	●
Power point socket – 12V (located in rear)	○	○	○
Power point – 150 Watt (230 volt) power converter	○	○	○
Smokers' Pack – Cigar lighter and ashtray	○	○	○
Storage – Front door map pockets	●	●	●
Storage – Driver's side, storage compartments on facia top with lift-up lids	●	●	●
Storage – Centre stack-mounted car park/toll ticket holder	●	●	●
Sunblinds – 2nd and 3rd row***	○	○	●
Seats			
Driver's seat – 10-way heated (fore/aft; recline; height; tilt; and lumbar) with armrest	●	●	●
Front passenger's seat – Single, 8-way heated seat (fore/aft; recline; height; tilt) with armrest (8-seat only)	●	●	●
Front passenger's seat – Dual, heated, (9-seat only)	○	○	○
Rear seats – Second row, flexible style single/double and detachable	●	●	●
Rear seats – Third row, flexible style single/double and detachable	●	●	●
Rear seat recline	-	●	●
Seat belts – Height-adjustable mount, driver's and outer front passenger's side	●	●	●
Seat belts – 3-point inertia reel	●	●	●

● = Standard, ○ = Option, at extra cost. *Until February 2013 production. **From February 2013 production. ***From November 2012 production. The Bluetooth® word mark and logos are owned by the Bluetooth SIG, Inc. and any use of such marks by Ford Motor Company is under licence. Other trademarks and trade names are those of their respective owners.

Specifications

Special vehicle options

	SVO Code	Feature Code	Base	Trend	Limited
Body					
Spare wheel access with rear doors closed	A532	D17BF	○	○	○
Electrical					
Engine RPM Speed Control, 1300-3000rpm	A003	DCNAB	○	○	○
2 High Performance Deep Cycle AGM Batteries (2 x 80Ah capacity, 800 CCA under driver's seat)	A736	HTCAC	○	○	○
Auxiliary fuse panel	A526	JZGAB	○	○	○
Beacon Preparation Pack – switch and wiring front and rear (includes Auxiliary fuse panel A526, and Mini Overhead Console – 1DIN)*	A606	JZFAC	○	○	○
Paint					
Special Paint, 150 colours available, consult Dealer for Details*	Various	Various	○	○	○

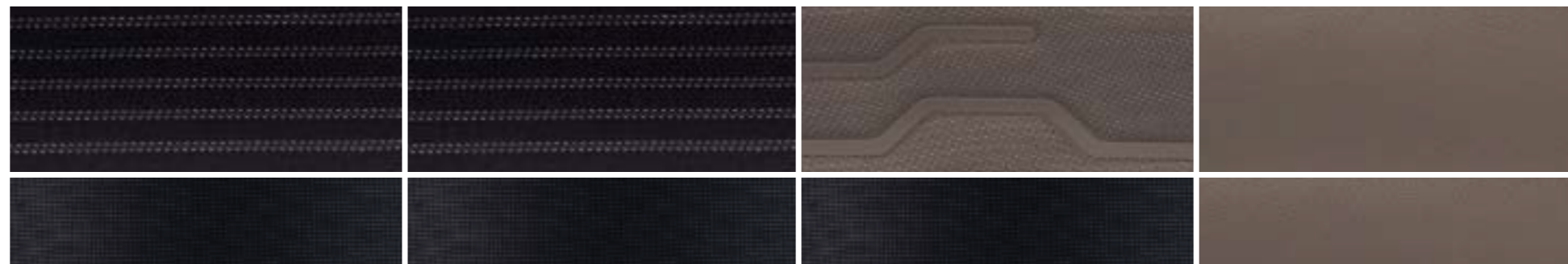
○ = Option, at extra cost. *SVO paint suffix must be entered at time of ordering. SVO paint pulls black (self-colour) bumpers, bodyside mouldings, mirror housing, and door handles. *Not to be ordered with tachograph, as utilises the same 1 DIN console.

Make it yours

Choosing the colour and trim for your new Ford Tourneo Custom is an opportunity to make a bold style statement.



*Metallic paint and leather trim are options, at extra cost.
Note The images used are to illustrate body colours only and may not reflect the vehicle described. Colours and trims reproduced within this brochure may vary from the actual colours, due to the limitations of the printing processes used.



Base
 Insert: Lane in Soft Charcoal
 Bolster: Max in Charcoal Black

Trend
 Insert: Lane in Soft Charcoal
 Bolster: Max in Charcoal Black

Limited
 Insert: Ecco in Medium Stone
 Bolster: Max in Charcoal Black

Limited
 Insert & bolster: Torino leather in Medium Stone*



Commercial Vehicle Finance

At Ford, we can help you find the right vehicle to suit your needs, whether its for business or pleasure. Our wide range of competitive finance products can help you get on the road – quickly and easily.

Ford Credit: Provides a range of traditional finance products for customers who are interested in Commercial Vehicle ownership.

Ford Lease: Specialises in contract hire and leasing and provides an alternative range of finance products aimed at business customers (business users only).

Both are part of one of the world's biggest names in automotive finance, and can offer you affordable, flexible and innovative products.

Ford Insure** is our comprehensive commercial vehicle insurance product designed especially for Ford drivers.

For more information visit www.fordinsure.co.uk or call Ford Insure 0800 0480 957

Important Information:

Ford Credit: Finance subject to status. Guarantees may be required. Freepost Ford Credit.

Ford Lease: Ford Lease is provided by ALD Automotive Ltd, trading as Ford Lease, Oakwood Park, Lodge Causeway, Fishponds, Bristol, BS16 3JA. ALD Automotive is registered in England No. 987418. For the purposes of the Data Protection Act 1998 the data controllers in relation to any information you supply are Ford Motor Company Limited, FCE Bank Plc and ALD Automotive. Finance subject to status. Guarantees and indemnities may be required. ALD Automotive is authorised and regulated by the Financial Services Authority.

**FCE Bank plc (Company No. 0772784). Registered in England, Central Office, Eagle Way, Brentwood, Essex CM13 3AR. Ford Insure is administered and underwritten by Royal & Sun Alliance Insurance plc which is authorised and regulated by the Financial Services Authority. FCE Bank plc is authorised and regulated by the Financial Services Authority and acts as an insurance intermediary in relation to Ford Insure. In relation to this same product, Ford Motor Company Limited is an appointed representative of FCE Bank plc. Ford Motor Company Limited acts as an insurance intermediary. Calls may be recorded and monitored.

Services

There are 222 Sales and 245 Aftersales Ford Transit Specialist Dealers across the UK, equipped and trained to meet Commercial Vehicle customer requirements. From these, 113 Sales and 95 Aftersales Dealers have achieved the 'Backbone standard' as recognition of their total commitment to delivering dedicated and professional sales and service support.

To find the location of your nearest Ford Transit Specialist Dealer, simply call the Ford Information Service on 0845 7111 888, or visit the Ford Dealer locator at www.fordvans.co.uk

Ford Protect Every new Ford Fiesta Van is protected by a 3-year/60,000-mile Ford Protect Classic Warranty Plan, and also comes with a 1-year Ford Assistance package.

Ford Ranger is protected by a 3-year/60,000 mile Ford Protect Classic Warranty Plan.

Ford Transit, Transit Custom and Transit Connects are protected by a 3-year/100,000-mile bumper-to-bumper warranty.

Ford Transit Chassis Cab One-Stop bodywork is covered by a 3-year/100,000-mile warranty and a 3-year Perforation Warranty provided by the bodywork supplier.

Ford Perforation Warranty All New Ranger, Transit Custom and Fiesta Van are covered by the Ford Perforation Warranty for 12 years from the date of first registration. Ford Transits, produced from the 1st March 2012, are covered by 12 years from the date of first registration. Ford Transit Connect and Tourneo Connect are covered for 10 years from the date of first registration. Subject to terms and conditions. Please see your Ford Transit Specialist Dealers for details.

Ford Assistance Ford Transit, Transit Custom, Transit Connect and Rangers are supplied with a minimum of a 1-year Ford Assistance roadside package. Further details are available either on www.ford.co.uk or from your local Ford Dealer.

Ford Rapid Fit Our 'no appointments necessary, while-you-wait' fast-fit service for exhausts, brakes, batteries and more, at over 240 sites nationally.

Ford Accident Repair Centres Approved Ford Accident Repair Centres meet rigorous Ford standards and are the best place to return your vehicle to its pre-accident condition.

Contacts

Ford Customer Relationship Centre In the unlikely event that your Ford Dealer can't help you or if you need to speak to us directly, call 0845 841 1111 at local rates.

Ford Rental – local service nationwide Car and van rental from our latest model range. Contact your local Ford Dealer for more information.

Talkback – the company car drivers' club This is your club for extended test drives, special events, and advice on tax and buying issues. Join free, even if you don't drive a Ford, on www.talkbackclub.com or call 0845 605 55 66.

Ford Mobility Our MAGIC care centre provides free information on all motoring and mobility issues, including special offers for HRDLA and Motability recipients. Call free on 0800 240 241.

*Subject to terms and conditions.



MY 2013 GBR en

Illustrations, descriptions and specifications. This catalogue was correct at the time of going to print. However, Ford policy is one of continuous product development. The right is reserved to change specifications, colours and prices of the models and items illustrated and described in this publication at any time. For the latest details always consult your Ford Dealer. **Optional equipment.** Throughout this publication, wherever a feature is described as being an 'Option' or 'Option Fitment/Pack' etc, you should assume that it will be at extra cost to the base vehicle, unless specifically stated to the contrary. All models and colour combinations are subject to availability. **Note.** Some images portrayed are of a pre-production model and/or are computer generated, therefore, the design/features on the final version of the vehicle may differ in various respects. In addition, some of the features shown on the vehicles may be optional. **Note.** This brochure contains both original Ford accessories as well as a range of products from our suppliers. The identified accessories are carefully selected third party supplier branded accessories which do not come with a Ford warranty but are instead covered by the third party supplier's own warranty, the details of which can be obtained from your Ford Dealer. **Note.** The Bluetooth® word mark and logos are owned by the Bluetooth SIG, Inc. and any use of such marks by Ford Motor Company is under licence. The iPod word mark and logos are the property of Apple Inc. Other trademarks and trade names are those of their respective owners.

The Government fuel figures do not express or imply any guarantee of the fuel consumption of any particular vehicle. The vehicles themselves have not been tested and there are inevitably differences between individual vehicles of the same model. In addition, a vehicle may incorporate particular modifications. Furthermore, the driver's style and road and traffic conditions, as well as the extent to which the vehicle has been driven and the standard of maintenance, will affect its fuel consumption. **Insurance groups** are only as recommended by the Association of British Insurers. You should always consult your insurance adviser for confirmation.



BY APPOINTMENT TO
HER MAJESTY THE QUEEN
MOTOR VEHICLES MANUFACTURERS
FORD MOTOR COMPANY LIMITED
BRENTWOOD ESSEX



BY APPOINTMENT TO
HIS ROYAL HIGHNESS THE PRINCE OF WALES
MOTOR VEHICLES MANUFACTURERS
FORD MOTOR COMPANY LIMITED
BRENTWOOD ESSEX



Ford and BP – working together to reduce fuel consumption and emissions.



Collect Nectar points at participating Ford Dealers and Authorised Repairers now. So take a look at the latest Ford Service Promotions by visiting the Owner Services section within www.ford.co.uk.



When you have finished with this brochure please recycle it.

Ford Customer Relationship Centre

In the unlikely event that your Ford Dealer can't help you or if you need to speak to us directly, call 0845 841 1111 at local rates.

Ford Rental - Local service nationwide

Car and van rental from our latest model range. Contact your local Ford Dealer for more information.

Talkback - The company car drivers' club

This is the club for extended test drives, special events, and advice on tax and buying issues. Join free, even if you don't drive a Ford.

Ford Mobility

Our MAGIC care centre provides free information on all motoring and mobility issues, including special offers for HRDLA and Motability recipients. Call free on 0800 240 241

Published by Ford Motor Company Limited, Brentwood, Essex, England.

Registered in England No. 235446.

FA 1574

INS2012/039 Exp. 18/07/2013

BJN 201822. FoE H56E.

PN 227506/0812/11.3m/GBR en

September 2012.

© Ford Motor Company Limited.

www.ford.co.uk