



**Ibanez**

2011 ELECTRIC GUITARS AND  
ELECTRIC BASSES



# STEVE VAI SIGNATURE MODELS



Photo by Michael Mesker

## JEM-JR BK

- 3pc Wizard III neck
- Basswood body
- Jumbo Frets
- Edge III bridge
- IBZ INF1 (H) neck pu
- IBZ INF51 (S) mid pu
- IBZ INF2 (H) bridge pu
- Hardware Color : Cosmo Black
- Color : Black

## JEM-JR WH

- 3pc Wizard III neck
- Basswood body
- Jumbo Frets
- Edge III bridge
- IBZ INF1 (H) neck pu
- IBZ INF51 (S) mid pu
- IBZ INF2 (H) bridge pu
- Hardware Color : Cosmo Black
- Color : White

# PAUL GILBERT SIGNATURE MODEL

## PGM3 WH

- 3pc Wizard III neck
- Basswood body
- Jumbo Frets
- Edge III bridge
- IBZ INF1 (H) neck pu
- IBZ INF51 (S) mid pu
- IBZ INF2 (H) bridge pu
- Hardware Color : Black
- Color : White



# GRGA

## EMG®-HZ Pickups (GRGA32EX)

The GRGA32EX is equipped with EMG®-HZ pickups.



## GRGA32EX BKN

- GRGA neck
- Basswood body
- Medium frets
- Edge III bridge
- EMG®-H4A(H) neck pu
- EMG®-H4 (H) bridge pu
- Hardware Color : Black
- Color : Black Night

## GRGA22FM TKS

- GRGA neck
- Flamed Maple top/Basswood body
- Medium frets
- Edge III bridge
- STD-C1 (H) neck pu
- STD-C2 (H) bridge pu
- Hardware Color : Black
- Color : Transparent Black Sunburst

## GRGA22FM DWB

- GRGA neck
- Flamed Maple top/Basswood body
- Medium frets
- Edge III bridge
- STD-C1 (H) neck pu
- STD-C2 (H) bridge pu
- Hardware Color : Black
- Color : Dark Wine Red Burst

## GRGA21 BKN

- GRGA neck
- Basswood body
- Medium frets
- Fixed bridge
- STD-C1 (H) neck pu
- STD-C2 (H) bridge pu
- Hardware Color : Black
- Color : Black Night

## GRGA21 CA

- GRGA neck
- Basswood body
- Medium frets
- Fixed bridge
- STD-C1 (H) neck pu
- STD-C2 (H) bridge pu
- Hardware Color : Black
- Color : Candy Apple

### RGA's Archtop Body

The RGA features a beautiful, archtop curved body. The contoured design also enables you to play heavy riffs comfortably without hitting the body.





# GRG



## GRG270 BKN

- GRG neck
- Basswood body
- Medium frets
- Edge III bridge
- STD-H1 (H) neck pu
- STD-S4 (S) mid pu
- STD-H2 (H) bridge pu
- Hardware Color : Black
- Color : Black Night



## GRG270 CA

- GRG neck
- Basswood body
- Medium frets
- Edge III bridge
- STD-H1 (H) neck pu
- STD-S4 (S) mid pu
- STD-H2 (H) bridge pu
- Hardware Color : Black
- Color : Candy Apple



## GRG270 BMB

- GRG neck
- Basswood body
- Medium frets
- Edge III bridge
- STD-H1 (H) neck pu
- STD-S4 (S) mid pu
- STD-H2 (H) bridge pu
- Hardware Color : Black
- Color : Beam Blue



## GRG250P BKN

- GRG neck
- Basswood body
- Medium frets
- Edge III bridge
- STD-H1 (H) neck pu
- STD-S4 (S) mid pu
- STD-H2 (H) bridge pu
- Hardware Color : Black
- Color : Black Night



## GRG250P WH

- GRG neck
- Basswood body
- Medium frets
- Edge III bridge
- STD-H1 (H) neck pu
- STD-S4 (S) mid pu
- STD-H2 (H) bridge pu
- Hardware Color : Black
- Color : White

# GRG



## GRG170DX BKN

- GRG neck
- Basswood body
- Medium frets
- Fat 10 bridge
- STD-H1 (H) neck pu
- STD-S4 (S) mid pu
- STD-H2 (H) bridge pu
- Hardware Color : Chrome
- Color : Black Night



## GRG170DX CA

- GRG neck
- Basswood body
- Medium frets
- Fat 10 bridge
- STD-H1 (H) neck pu
- STD-S4 (S) mid pu
- STD-H2 (H) bridge pu
- Hardware Color : Chrome
- Color : Candy Apple



## GRG170DX JB

- GRG neck
- Basswood body
- Medium frets
- Fat 10 bridge
- STD-H1 (H) neck pu
- STD-S4 (S) mid pu
- STD-H2 (H) bridge pu
- Hardware Color : Chrome
- Color : Jewel Blue



## GRG170DX SV

- GRG neck
- Basswood body
- Medium frets
- Fat 10 bridge
- STD-H1 (H) neck pu
- STD-S4 (S) mid pu
- STD-H2 (H) bridge pu
- Hardware Color : Chrome
- Color : Silver



GRG150P's Metallic textured pickguard.



## GRG150P BKN

- GRG neck
- Basswood body
- Medium frets
- Fat 10 bridge
- STD-H1 (H) neck pu
- STD-S4 (S) mid pu
- STD-H2 (H) bridge pu
- Hardware Color : Chrome
- Color : Black Night



## GRG150P WH

- GRG neck
- Basswood body
- Medium frets
- Fat 10 bridge
- STD-H1 (H) neck pu
- STD-S4 (S) mid pu
- STD-H2 (H) bridge pu
- Hardware Color : Chrome
- Color : White



# GART

## GART80EX TKS

- GART Neck
- Flamed Maple top / Basswood body
- Medium frets
- Full Tune III bridge
- EMG®-H4A(H) neck pu
- EMG®-H4 (H) bridge pu
- Hardware Color : Cosmo Black
- Color : Transparent Black Sunburst

## GARTS70 CA

- GART set-in neck
- Basswood body
- Medium frets
- Full Tune III bridge
- STD-C3 (H) neck pu
- STD-C4 (H) bridge pu
- Hardware Color : Cosmo Black
- Color : Candy Apple

## GARTS70 GB

- GART set-in neck
- Basswood body
- Medium frets
- Full Tune III bridge
- STD-C3 (H) neck pu
- STD-C4 (H) bridge pu
- Hardware Color : Cosmo Black
- Color : Gun Metallic Blue

## GART60 TFB

- GART Neck
- Basswood body
- Medium frets
- Full Tune III bridge
- STD-H1 (H) neck pu
- STD-H2 (H) bridge pu
- Hardware Color : Chrome
- Color : Tri Fade Burst

## GART60 BKN

- GART Neck
- Basswood body
- Medium frets
- Full Tune III bridge
- STD-H1 (H) neck pu
- STD-H2 (H) bridge pu
- Hardware Color : Chrome
- Color : Black Night

## GART60 MSS

- GART Neck
- Basswood body
- Medium frets
- Full Tune III bridge
- STD-H1 (H) neck pu
- STD-H2 (H) bridge pu
- Hardware Color : Chrome
- Color : Metallic Silver Sunburst



### EMG®-HZ Pickups (GART80EX)

The GART80EX is equipped with EMG®-HZ pickups.



### Set-in Neck Construction

Set-in neck featured on GARTS provides maximum sustain and playing comfort.

# GAX

## GAX30 DW

- GAX neck
- Basswood body
- Medium frets
- Fixed bridge
- STD-H1 (H) neck pu
- STD-H2 (H) bridge pu
- Hardware Color : Chrome
- Color : Dark Wine Red

## GAX30 BKN

- GAX neck
- Basswood body
- Medium frets
- Fixed bridge
- STD-H1 (H) neck pu
- STD-H2 (H) bridge pu
- Hardware Color : Chrome
- Color : Black Night



# GRX

## GRX40 PB

- GRX neck
- Basswood body
- Medium frets
- FAT6 bridge
- STD-S5 (S) neck pu
- STD-S6 (S) mid pu
- STD-H4 (H) bridge pu
- Hardware Color : Chrome
- Color : Pastel Blue

## GRX40 BKN

- GRX neck
- Basswood body
- Medium frets
- FAT6 bridge
- STD-S5 (S) neck pu
- STD-S6 (S) mid pu
- STD-H4 (H) bridge pu
- Hardware Color : Chrome
- Color : Black Night

## GRX40 PW

- GRX neck
- Basswood body
- Medium frets
- FAT6 bridge
- STD-S5 (S) neck pu
- STD-S6 (S) mid pu
- STD-H4 (H) bridge pu
- Hardware Color : Chrome
- Color : Pearl White

## GRX40 TFB

- GRX neck
- Basswood body
- Medium frets
- FAT6 bridge
- STD-S5 (S) neck pu
- STD-S6 (S) mid pu
- STD-H4 (H) bridge pu
- Hardware Color : Chrome
- Color : Tri Fade Burst







**GSR**



**GSR390 WN**

- GSR4 neck
- Basswood Body
- Medium frets
- B10 bridge (19mm string spacing)
- STD-N4 neck pu
- STD-B4 bridge pu
- EQB-IIC 2-band eq
- Hardware color : Chrome
- Color : Walnut



**GSR395 WN**

- GSR5 neck
- Basswood Body
- Medium frets
- B15 bridge (16.5mm string spacing)
- STD-N5 neck pu
- STD-B5 bridge pu
- EQB-IIC 2-band eq
- Hardware color : Chrome
- Color : Walnut



**GSR396 WN**

- GSR6 neck
- Basswood Body
- Medium frets
- B16 bridge (16.5mm string spacing)
- STD-N6 neck pu
- STD-B6 bridge pu
- EQB-IIC 2-band eq
- Hardware color : Chrome
- Color : Walnut

**GSR**



**GSR200 BK**

- GSR4 neck
- Basswood Body
- Medium frets
- B10 bridge (19mm string spacing)
- STD-P2 neck pu
- STD-J2 bridge pu
- Phat II eq
- Hardware color : Chrome
- Color : Black



**GSR200 JB**

- GSR4 neck
- Basswood Body
- Medium frets
- B10 bridge (19mm string spacing)
- STD-P2 neck pu
- STD-J2 bridge pu
- Phat II eq
- Hardware color : Chrome
- Color : Jewel Blue



**GSR200 TR**

- GSR4 neck
- Basswood Body
- Medium frets
- B10 bridge (19mm string spacing)
- STD-P2 neck pu
- STD-J2 bridge pu
- Phat II eq
- Hardware color : Chrome
- Color : Transparent Red



**GSR200 RR**

- GSR4 neck
- Basswood Body
- Medium frets
- B10 bridge (19mm string spacing)
- STD-P2 neck pu
- STD-J2 bridge pu
- Phat II eq
- Hardware color : Chrome
- Color : Red Rock



**GSR205 BK**

- GSR5 neck
- Basswood Body
- Medium frets
- B15 bridge (16.5mm string spacing)
- DXH-5N neck pu
- DXH-5B bridge pu
- Phat II eq
- Hardware color : Chrome
- Color : Black



**GSR205 TR**

- GSR5 neck
- Basswood Body
- Medium frets
- B15 bridge (16.5mm string spacing)
- DXH-5N neck pu
- DXH-5B bridge pu
- Phat II eq
- Hardware color : Chrome
- Color : Transparent Red



# GSR



### GSR200EX BKF

- GSR4 neck
- Basswood Body
- Medium frets
- B10 bridge (19mm string spacing)
- PPD4 neck pu
- PPD4 bridge pu
- Phat II eq
- Hardware color : Black
- Color : Black Flat



### GSR200EX GSF

- GSR4 neck
- Basswood Body
- Medium frets
- B10 bridge (19mm string spacing)
- PPD4 neck pu
- PPD4 bridge pu
- Phat II eq
- Hardware color : Black
- Color : Green Shadow Flat



### GSR205EX BKF

- GSR5 neck
- Basswood Body
- Medium frets
- B15 bridge (16.5mm string spacing)
- PPD5 neck pu
- PPD5 bridge pu
- Phat II eq
- Hardware color : Black
- Color : Black Flat



### GSR205EX BWF

- GSR5 neck
- Basswood Body
- Medium frets
- B15 bridge (16.5mm string spacing)
- PPD5 neck pu
- PPD5 bridge pu
- Phat II eq
- Hardware color : Black
- Color : Burgundy Wine Flat

# GSR



### GSR320 BKN

- GSR4 neck
- Basswood Body
- Medium frets
- B10 bridge (19mm string spacing)
- STD-J2 neck pu
- STD-J2 bridge pu
- Hardware color : Cosmo Black
- Color : Black Night



### GSR320 MRS

- GSR4 neck
- Basswood Body
- Medium frets
- B10 bridge (19mm string spacing)
- STD-J2 neck pu
- STD-J2 bridge pu
- Hardware color : Cosmo Black
- Color : Metallic Red Sunburst



### GSR320 PW

- GSR4 neck
- Basswood Body
- Medium frets
- B10 bridge (19mm string spacing)
- STD-J2 neck pu
- STD-J2 bridge pu
- Hardware color : Cosmo Black
- Color : Pearl White

# GARTB



### GARTB20 BK

- GARTB4 neck
- Basswood Body
- Medium frets
- B10 bridge (19mm string spacing)
- STD-N4 neck pu
- STD-B4 bridge pu
- Hardware color : Chrome
- Color : Black



### GARTB20 MSS

- GARTB4 neck
- Basswood Body
- Medium frets
- B10 bridge (19mm string spacing)
- STD-N4 neck pu
- STD-B4 bridge pu
- Hardware color : Chrome
- Color : Metallic Silver Sunburst



### GARTB20 TR

- GARTB4 neck
- Basswood Body
- Medium frets
- B10 bridge (19mm string spacing)
- STD-N4 neck pu
- STD-B4 bridge pu
- Hardware color : Chrome
- Color : Transparent Red



# IBANEZ ARTISTS



**Roger Alcantara**  
(Eternal Now, Barbie Almalbis)



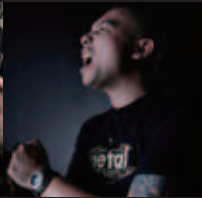
**Bagus**  
(Netral)



**Beng Beng**  
(PAS)



**Maew Chirasak Panphum**  
(Catarock)



**Choky**  
(Netral)



**Guido Fregonara**  
(K-lafate)



**Gabriel Hidalgo**  
(Gabriel Hidalgo band, Six Magics)



**Kessier**  
(SERAPHIM)



**Ae Aekachai Krai-arnon**  
(Ae Wizard)



**LC de Leon**  
(Reklamo)



**Chen-Yi Lin**  
(Silent Hell, Dizzy combo Band)



**Juan Pablo Lobos**



**Demian Mejicano**



**Abdul Talib Bin Rasak**  
(Tribe, Elusion, Tri-Ryche, Toyak, Academy Of Rock)



**Addy Rasidi**  
(Jive Talking, Cradle)



**Rithan**  
(Deja Voodoo Spells)



**Luciano Rojas**  
(Saiko)



**Rozami**  
(Deja Voodoo Spells)



**Chad Robles**  
(Eternal Now)



**Jack Rufo**  
(Novus Luna, Neo Colours, Kitchie Nadal Band)



**Peung Jatutapong Rumaklom**  
(Armchair)



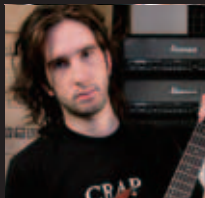
**Arya Setyadi**  
(Independent)



**Alejandro Silva**  
(Alejandro Silva Power Cuarteto)



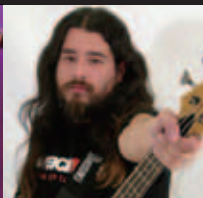
**Sony**  
(J Rock)



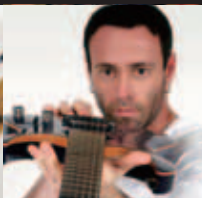
**Pablo Stipicic**  
(Blackout)



**Champ Tanat Metanayon**  
(INCA, Rock dream team)



**Marcelo Da Venezia**  
(Weichafe)



**Everton Waldman**  
(RT)



**Pop Waravit Charoenponnapachai**  
(RANCOROUS, Luminasion)



**Lucas Yaksic**  
(Lucas Yaksic Band)

# Ibanez

## 2011 ELECTRIC GUITARS AND ELECTRIC BASSES