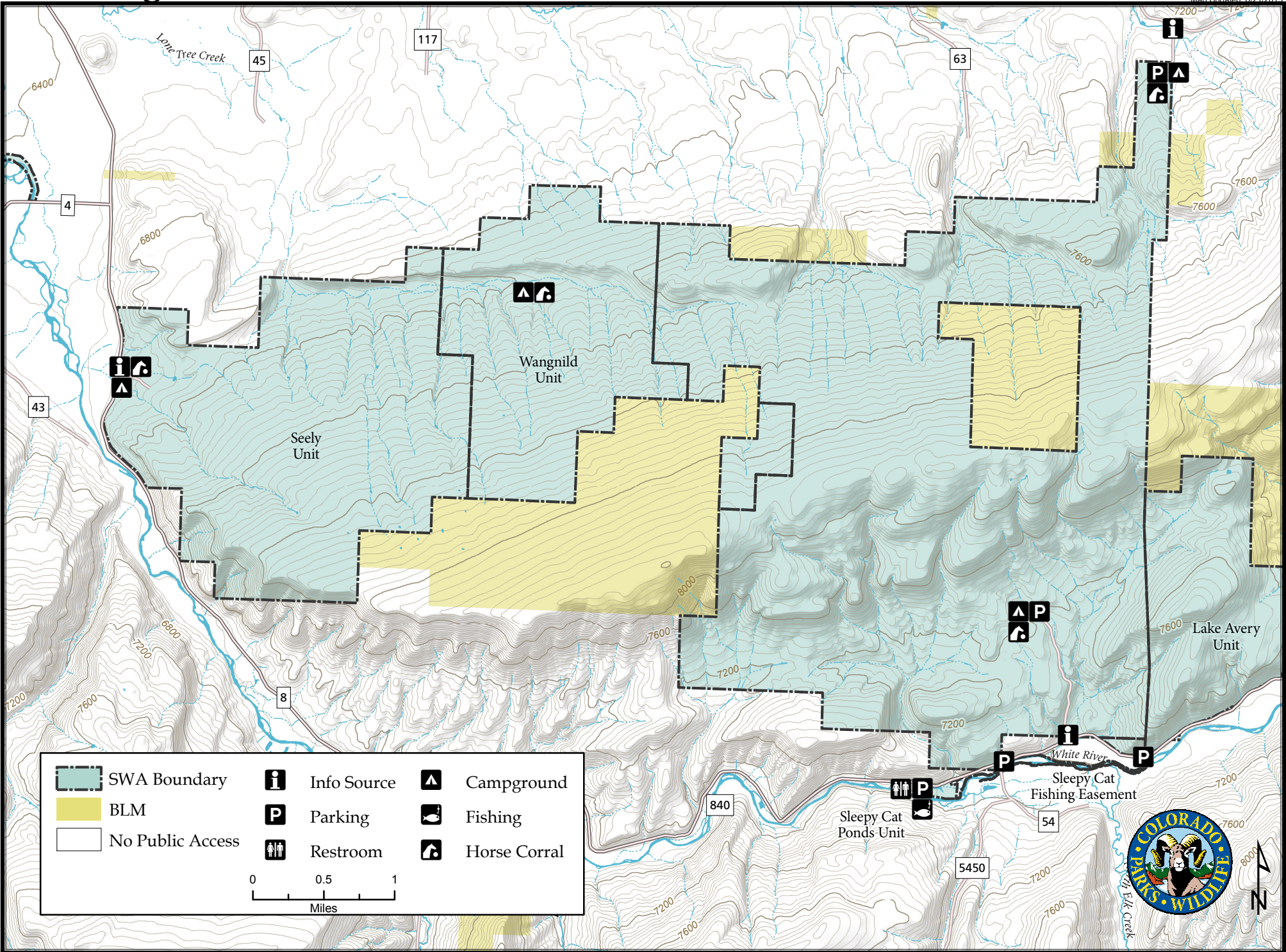


# Oak Ridge State Wildlife Area

Map Updated: 8/21/2015



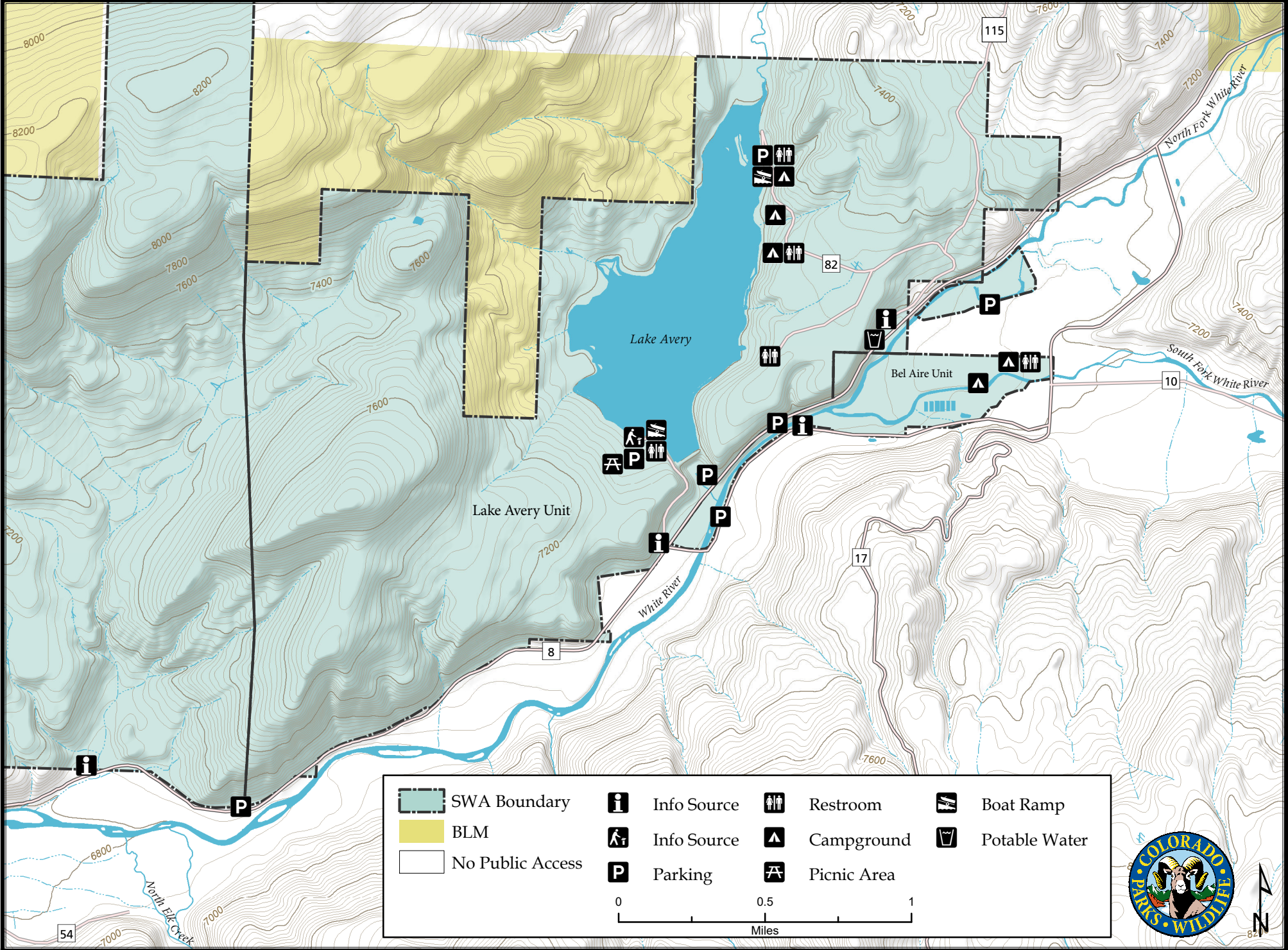
	SWA Boundary		Info Source		Campground
	BLM		Parking		Fishing
	No Public Access		Restroom		Horse Corral

0 0.5 1  
Miles



# Oak Ridge State Wildlife Area - Lake Avery and Bel Aire Units

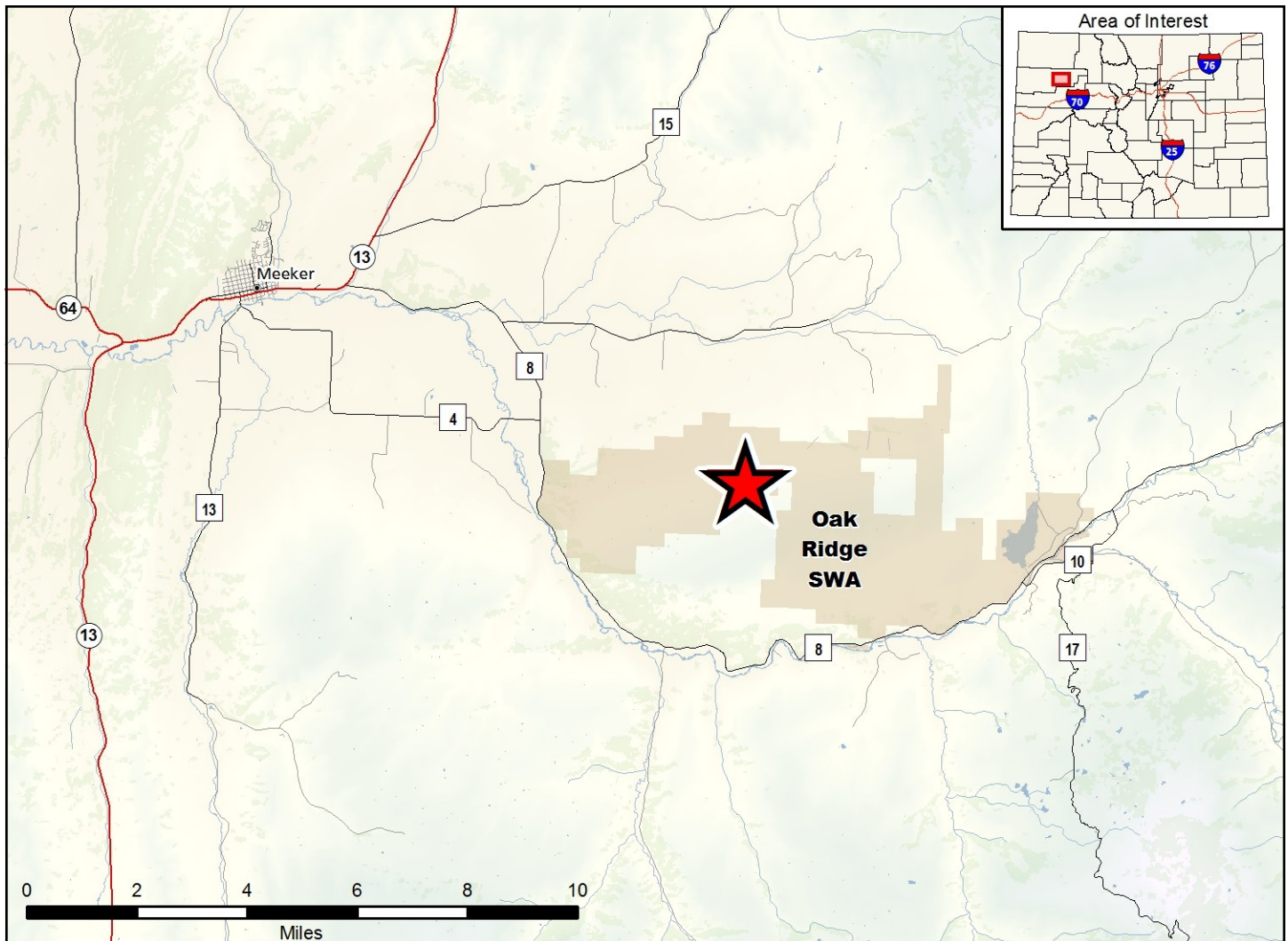
Map Updated: 5/2/2022



	SWA Boundary		Info Source		Restroom		Boat Ramp
	BLM		Info Source		Campground		Potable Water
	No Public Access		Parking		Picnic Area		

0 0.5 1  
Miles





**Oak Ridge State Wildlife Area (Bel Aire Unit, Lake Avery Unit, Oak Ridge Unit, Jon Wangnild Unit, Sleepy Cat Ponds Unit, and Sleepy Cat Fishing Easement) - Rio Blanco County**

From Meeker, go 6.3 or 16 miles east on County Road 8 and look for the Division of Parks and Wildlife signs on the left.

**Wildlife Area Offers:**

Hunting: Deer, Elk, Rabbit, Dusky (Blue) Grouse, Dove, Waterfowl

Fishing: Coldwater Stream

Recreation: Camping, Hiking, Wildlife Viewing

- D. Hunting is prohibited, except by archery in that portion south of Rio Blanco Co Rd 8, west of Rio Blanco Co Rd 17, and north and east of Rio Blanco Co Rd 10.
- E. Water skiing, jet skis, and boating other than wakeless boating, are prohibited on Lake Avery. Camping is prohibited except in designated areas.

**Regulations:**

*In addition to or in place of those restrictions listed in regulation #900 the below listed provisions or restrictions apply (see Ch. 9, <http://cpw.state.co.us/aboutus/Pages/Regulations.aspx>).*

- A. Camping is prohibited, except in designated areas.
- B. Public access is prohibited on the Oak Ridge Unit from December 1 through July 15.
- C. Public access is prohibited on Sleepy Cat Ponds Unit and Sleepy Cat Fishing Easement, except for fishing.

**More Information:**

CPW Office (Meeker): (970) 878-5240

CPW Website: <http://cpw.state.co.us/>

This product is produced and distributed by: Colorado Parks and Wildlife - GIS Group, 317 W. Prospect, Fort Collins, CO 80526. Information depicted hereon is for reference purposes only and is compiled from best available sources. Mapped property boundaries may or may not reflect actual legal holdings. Please observe and respect all marked boundaries and signs on the property. Regulations are subject to change - posted regulations at the individual SWA take precedence over any regulations referred to here. For further information, please see regulations brochures available at CPW offices or [wildlife.state.co.us](http://wildlife.state.co.us).