



JSW Steel: Site Visit to 10 MTPA Dolvi Works

December 2022

Certain statements in this report concerning our future growth prospects are forward looking statements, which involve a number of risks, and uncertainties that could cause actual results to differ materially from those in such forward looking statements. The risk and uncertainties relating to these statements include, but are not limited to risks and uncertainties regarding fluctuations in earnings, our ability to manage growth, intense competition within Steel industry including those factors which may affect our cost advantage, wage increases in India, our ability to attract and retain highly skilled professionals, time and cost overruns on fixed-price, fixed-time frame contracts, our ability to commission mines within contemplated time and costs, our ability to raise the finance within time and cost client concentration, restrictions on immigration, our ability to manage our internal operations, reduced demand for steel, our ability to successfully complete and integrate potential acquisitions, liability for damages on our service contracts, the success of the companies in which the Company has made strategic investments, withdrawal of fiscal/governmental incentives, impact of regulatory measures, political instability, legal restrictions on raising capital or acquiring companies outside India, unauthorized use of our intellectual property and general economic conditions affecting our industry. The company does not undertake to update any forward-looking statements that may be made from time to time by or on behalf of the company.



Sustainability

Plant Overview

Digitalization





Sustainability

Plant Overview

Digitalization



Environment



Targets for 2030 and compared to base year 2005



42%

Emissions reduction



39%

Reduction in water consumption



100%

Waste recycling/reutilisation



19%

Reduction in energy consumption

- Carbon neutrality at JSW Steel Coated Products
- Renewable Energy consumption of c.1,000 MW
- Maintaining zero liquid discharge
- 'No net loss' of biodiversity

- Reduce specific dust emissions to 0.26 kg/tcs
- Reduce specific emissions of oxides of sulphur to 0.82 kg/tcs
- Specific emissions of oxides of nitrogen to 0.91 kg/tcs

Social



- Zero harm to life
- Nurturing a diverse and inclusive culture
- Empowering local communities
- Creating sustainable livelihoods
- Adhering to human rights

Governance



- Diverse, involved and competent Board
- Highest levels of ethics and transparency
- Strict adherence to Code of Conduct
- Ensuring information security and cybersecurity
- Robust corporate governance

¹Compared to base year FY 2005

Safety: Building a Culture of Health & Safety

- Mandatory **Safety Certification** for all employees on **5 high-risk standards (PTW, PPE, LOTO, CSE, WAH)**
- **Animated Safety Movie** for all serious accidents being utilized inside plant areas for learning & training
- **E-learning modules** for **safety standards** are developed for ease of learning
- **Skill Assessment** of all new contract employees before induction training
- **Robust Fire Prevention, Fire Fighting & Emergency response**

10 JSW CRITICAL SAFETY RULES

 <p>WORK AUTHORIZATION Work with a valid permit when required.</p>	 <p>WORKING AT HEIGHT Protect yourself against a fall when working at height.</p>	 <p>CONFINED SPACE Obtain a valid authorization before entering a confined space.</p>
 <p>ENERGY ISOLATION Follow the Lock Out, Tag Out (LOTO) isolation procedure when working on equipment.</p>	 <p>HOT WORK Identify and control flammables and ignition sources before starting any hot work.</p>	 <p>SAFETY CONTROLS Obtain a valid authorization before overriding or disabling safety controls/safety critical equipment.</p>
 <p>DRIVING SAFETY Always wear your seat belt. Respect speed limits. Do not use your mobile or operate any device while driving.</p>	 <p>INCIDENT REPORTING Report all workplace injuries & incidents.</p>	 <p>SAFE LIFTING Do not walk or stand under a suspended load.</p>
 <p>NO ALCOHOL, DRUGS, SMOKING Do not work or drive under the influence of alcohol or drugs. Do not smoke in designated no smoking zones.</p>		

Vision

To provide timely, affordable, quality health services to improve life, particularly of the vulnerable

Key Highlights

- Commissioned in FY 2021
- Extensive healthcare services including Neonatal Care, Cardiology, General Surgery, ENT, Gynaecology, Orthopaedic, Dentistry, Ophthalmology and Emergency Care
- 80,000 sq ft building spread over 4.5 acres
- 73 beds, 10 OPDs, ICU & Emergency wards
- Serves around 200 nearby villages



Mangrove Conservation

Mangroves are tropical forests which grow at the edge of the land and the sea

Importance of Mangroves

- An ecosystem
- Absorbs pollutants from water
- High Carbon Sequestration
- Prevents land erosion
- Natural barrier during tides
- Protects livelihoods

JSW Steel's initiatives

Maximising social and economic wellbeing by sustaining the mangrove ecosystem



310 Hectares
Degraded area restored

2,000+
Women engaged in
the initiative

1.55 mn
Mangrove Saplings planted

75%
Survival Rate of the saplings

Covered Sheds for Jetty Yards



Covered sheds for Raw Material Storage at Jetty

- 110kt Coal storage
- 305kt Iron Ore and Flux storage
- Prevents dust, wastage of materials

Top Gas Recovery Turbine



Top Gas Recovery Turbine utilises the top gas from blast furnace having high pressure (5 bars) to generate power

Dry Gas Cleaning Plant



Dry Gas Cleaning Plant (GCP)

Enabled the energy recovery of ~22 MW
Reduced CO₂ emissions by ~0.14 mn tCO₂e

Coke Dry Quenching (CDQ) System



CDQ Systems recover the sensible heat of red hot coke, reducing energy consumption & pollution. It also improves the quality of coke, reducing moisture.



Sustainability, Safety & CSR

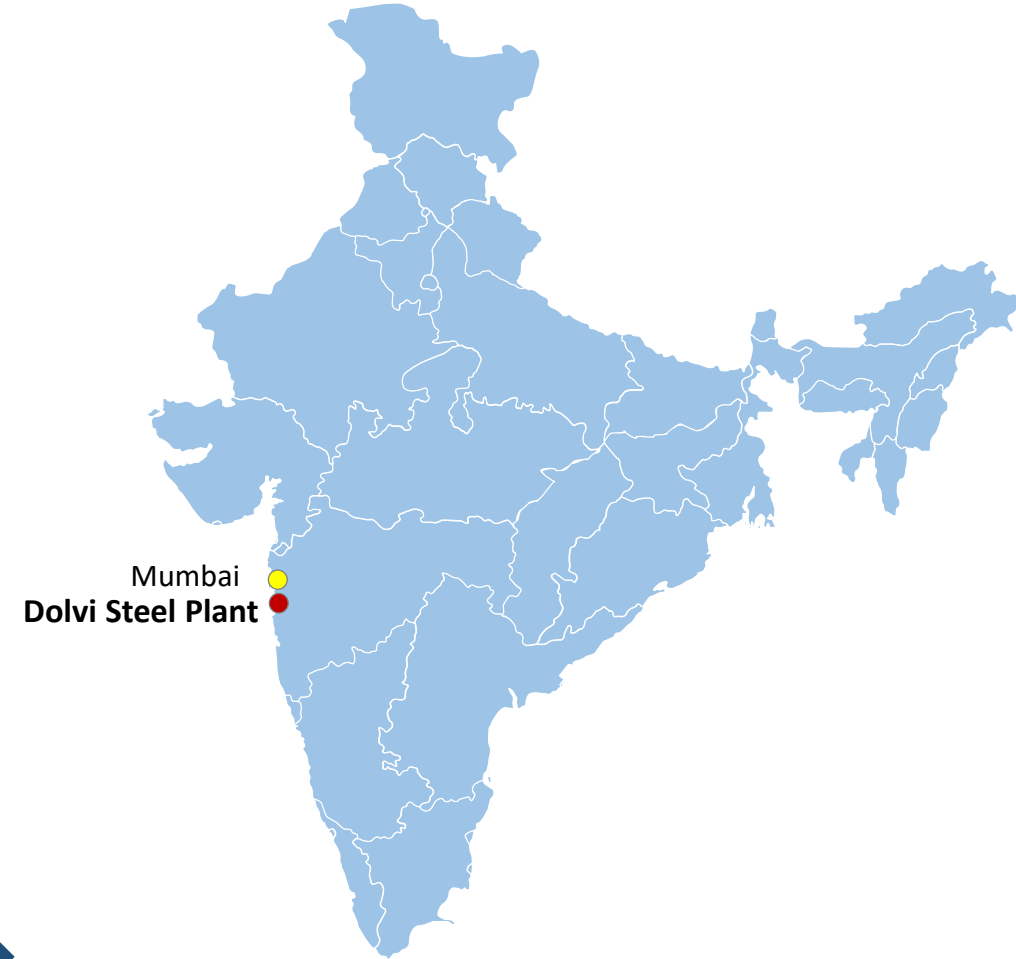
Plant Overview

Digitalization

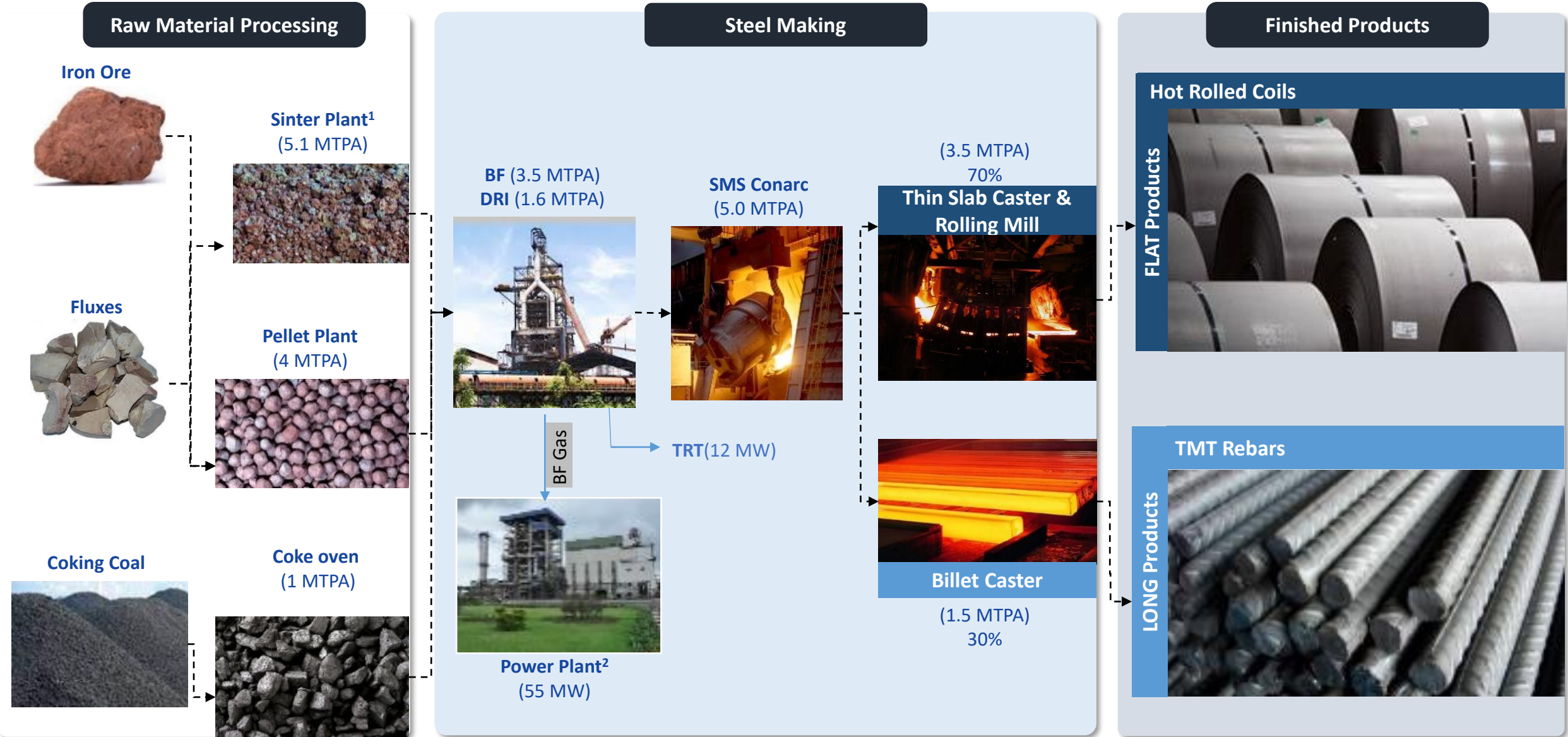


Dolvi Plant: Overview

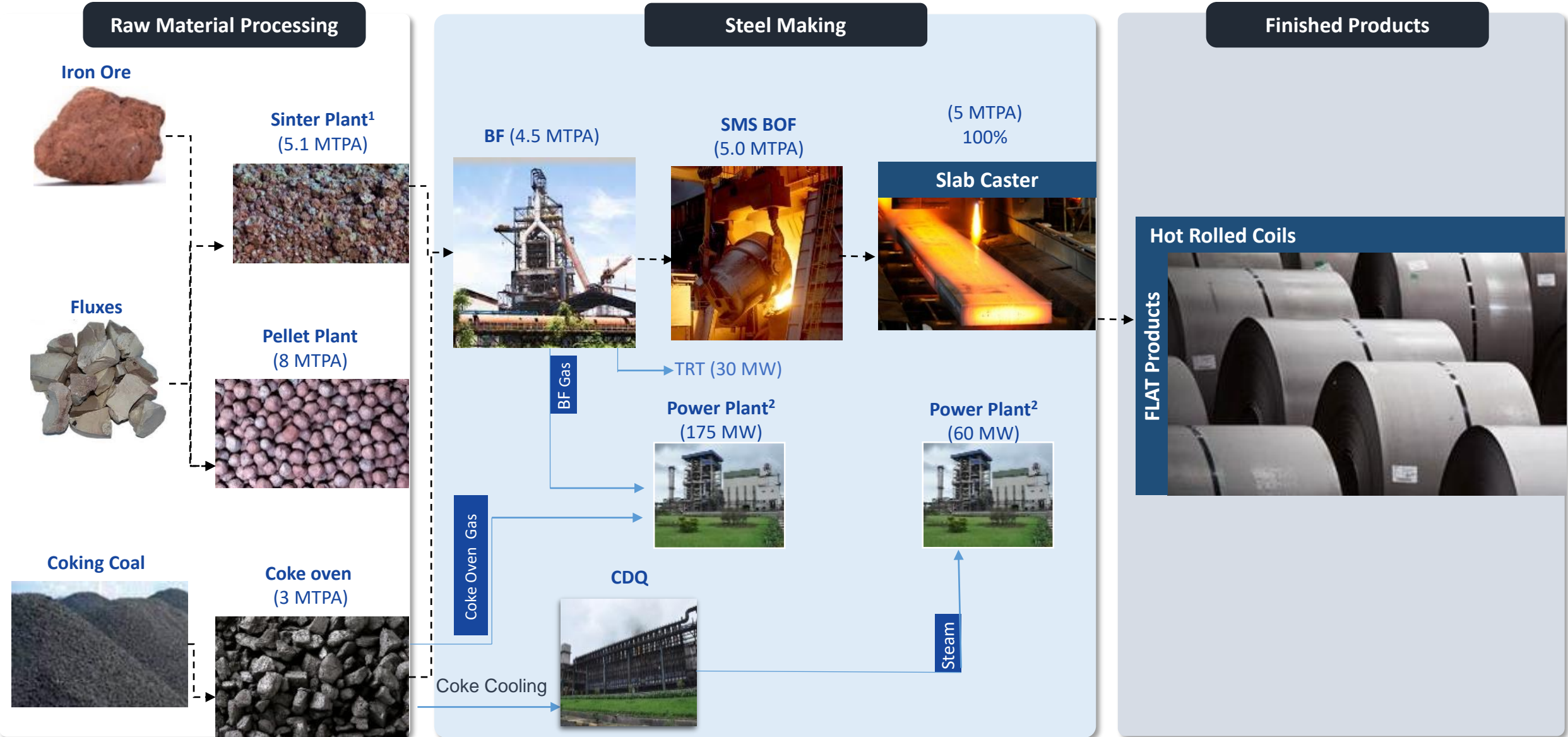
- The 10 MTPA integrated steel plant at Dolvi is advantageously located in the state of Maharashtra on the West coast of India
- JSW Steel acquired the 3.3 MTPA Dolvi plant in 2010, and has increased the capacity to 10 MTPA through brownfield expansions
- Plant is connected to Dharamtar Jetty (cargo handling capacity of 28 MTPA); total area of 1400+ acres
- Dolvi manufactures products that meet the needs of companies across sectors: Automotive, Consumer Durables, Oil & Gas, Infrastructure and Construction



Dolvi Plant: Process flow at Phase-I (5 MTPA)



Dolvi Plant: Process flow at Phase-II (5 MTPA) Commissioned in 2021



Dolvi Plant: Product Portfolio & Applications

FLAT Products



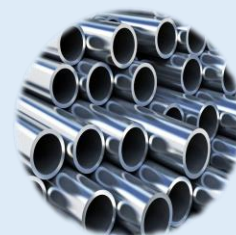
Tinplate



Commercial Vehicles



Home Appliances



Pipes



Structural



Passenger Vehicles



Line Pipe



Yellow Goods/ Excavators

LONG Products



Construction



Infrastructure



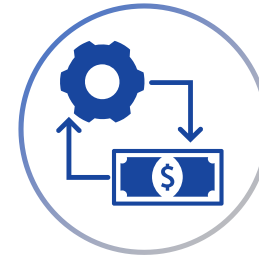
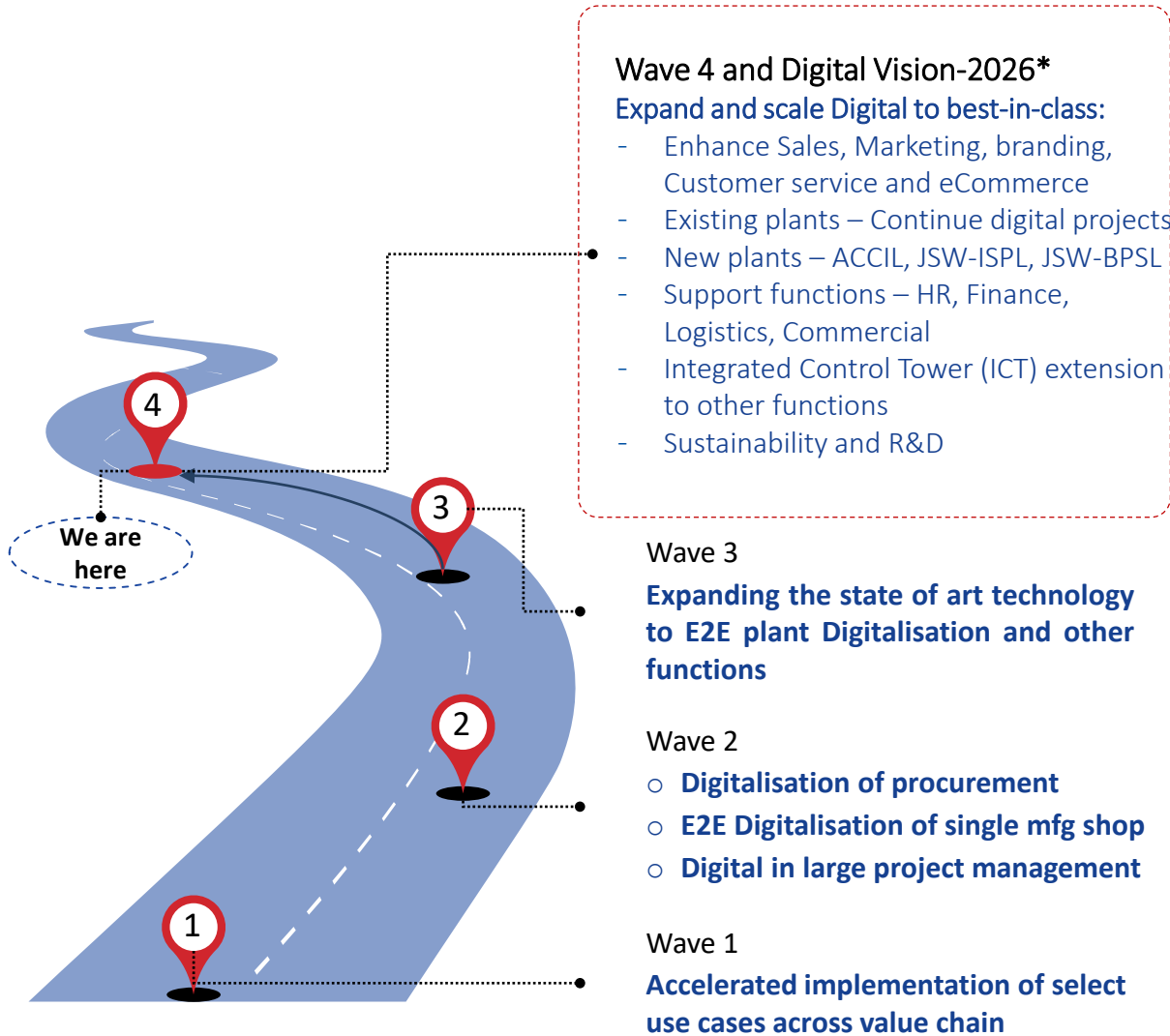
Sustainability, Safety & CSR

Plant Overview

Digitalization



Digitalization: JSW Steel's Approach & Impact Created



130+
 Digital Assets
 Created



6,000+
 Employees engaged
 in the digital journey



400+
 Digital lighthouses
 and projects

Guiding principles behind Digitalization



- Agile**
- Fail-fast approach
 - Continuous improvement
 - Discreet problems

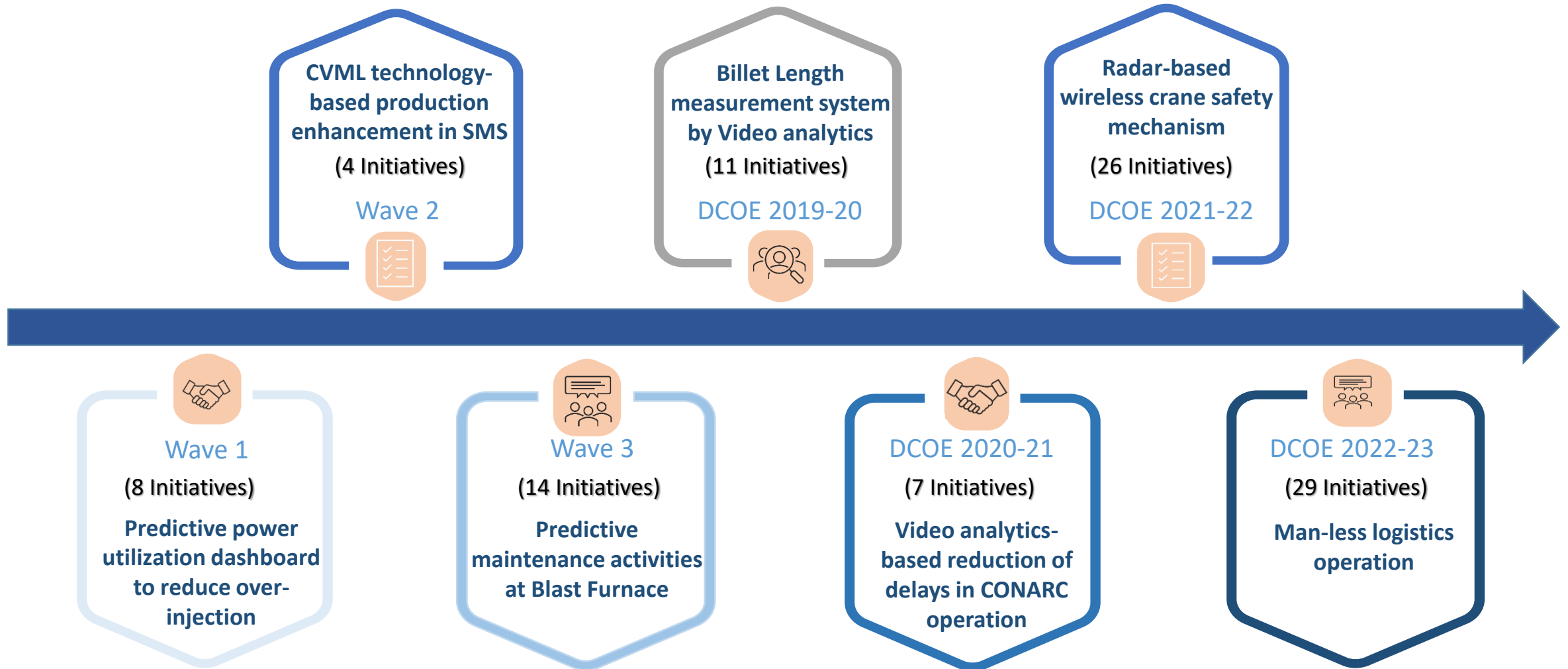


- Value lens**
- ROI key to investment
 - Safety added focus
 - Customer, Supplier & Employees Experience



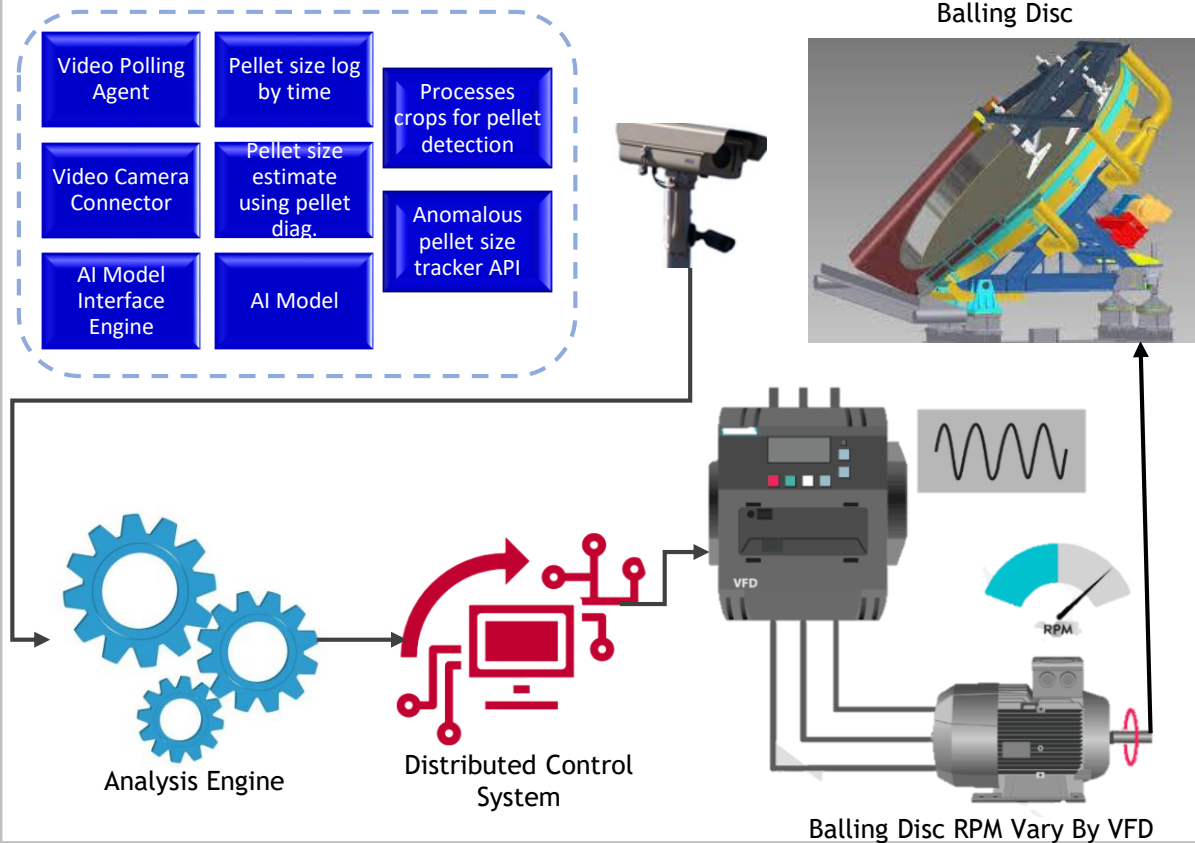
- Sustenance**
- Nurture inhouse talent
 - Promote Horizontal deployment
 - PMO & Governance

Dolvi Plant: Digitalization Journey



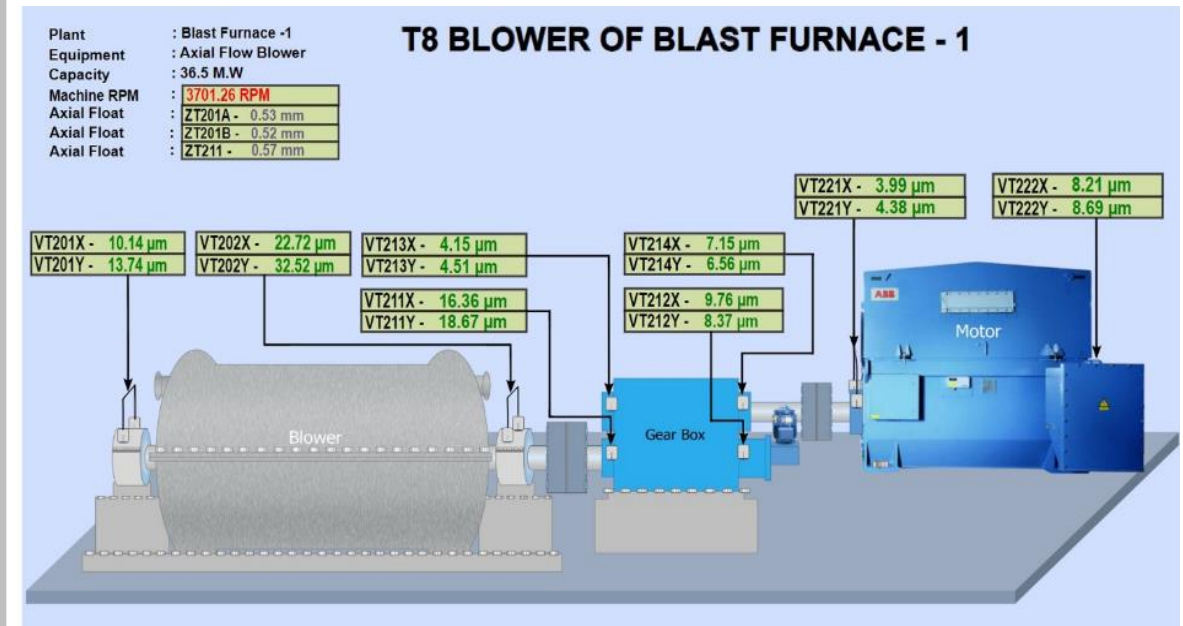
Pellet Plant Balling Disc Optimization through Video Analytics

Reduction In Green Ball Rejection in Pellet plant to enhance productivity



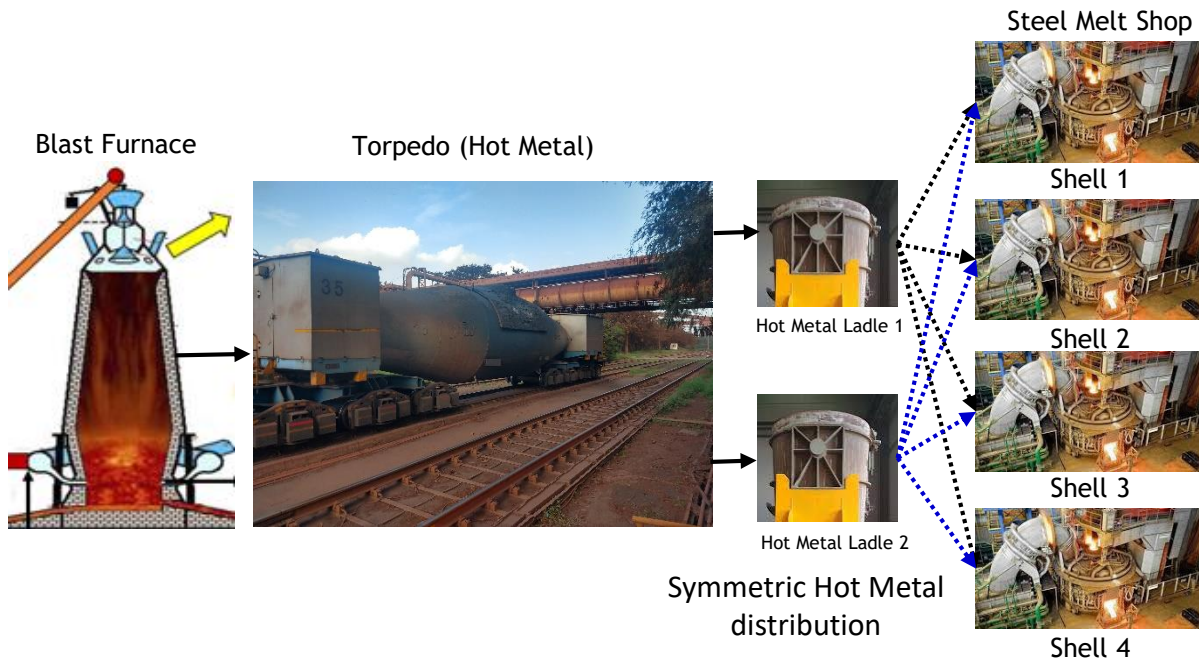
Predictive Maintenance and Analytics Module for Detecting Equipment Anomalies

Real-time condition monitoring and predictive analysis to prevent anomalies in Equipments



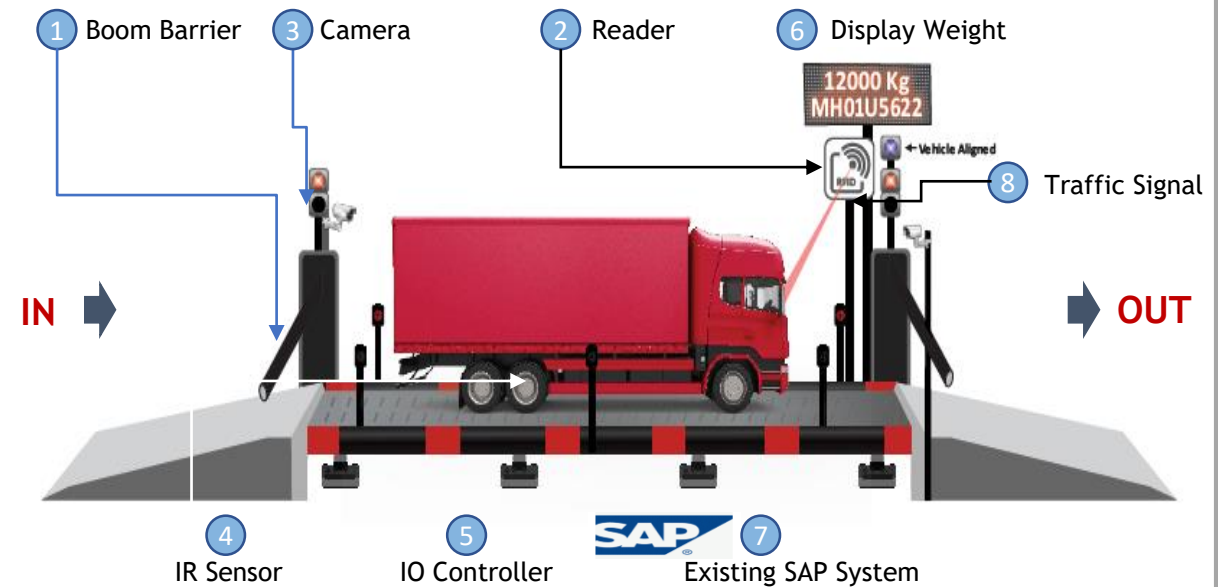
Digital Excellence-based Production Optimization Model

Dynamic optimization model to get advanced information of all incoming hot metal through Torpedoes to SMS for Shift Planner to make optimized planning of hot metal distribution in all shells

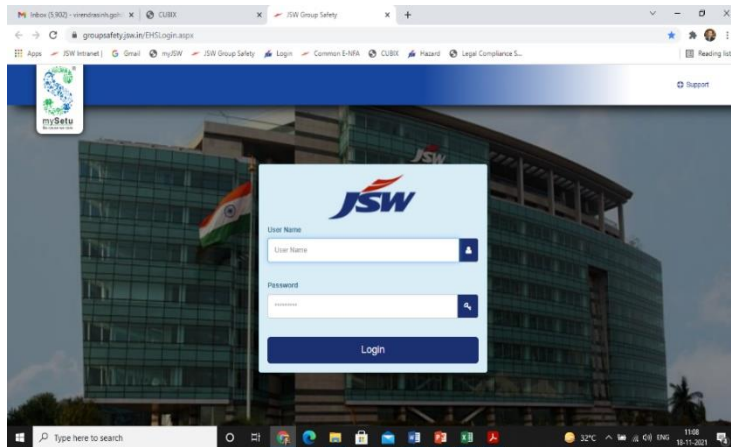


Digital Logistics Management (SAMPARK) for Road Transport (under implementation)

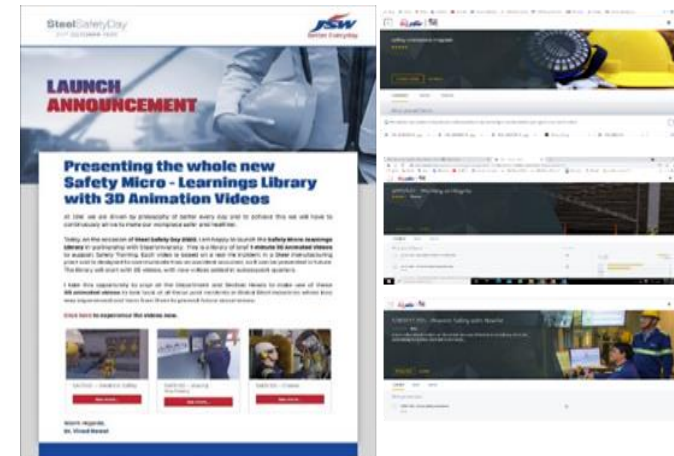
Process time reduction, turn around time (TAT) improvement and end-to-end logistics visibility



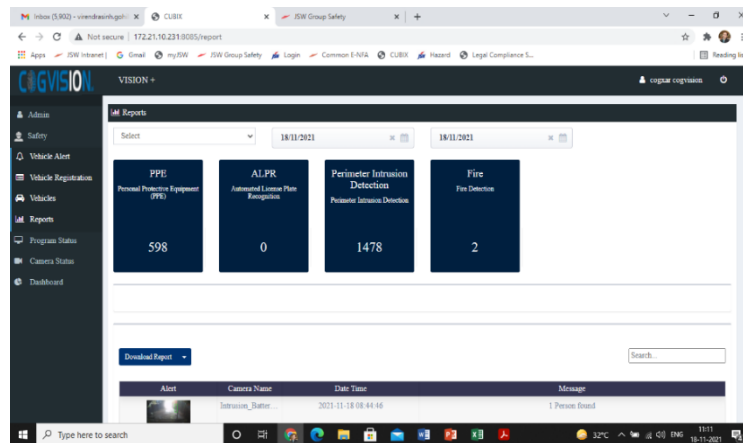
Dolvi Plant: Digitalization Initiatives for Safety



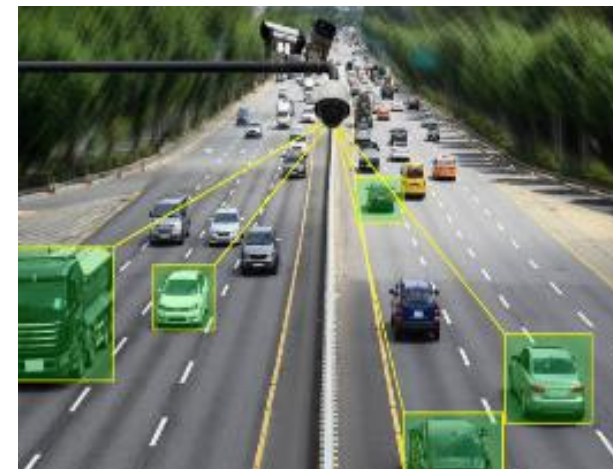
Online Reporting Portal



Online Training Modules - Safety Micro-Learnings Library with 3D animation Videos



Online Detection on PPE Violation, Intrusion Detection & Fire Detection through CCTV



AI Based Road Safety Violation monitoring system.



THANK YOU

Butterflies seen in the garden of Dolvi Plant

Investor Relations Contact:

ir.jswsteel@jsw.in