

Next Steps

- Finalisation of the preferred option following the consultation process
- Preparation of Part 10 planning submission documents
- Lodgement of planning application with An Bord Pleanála
- Detailed design of the flood relief scheme
- Preparation of contractor tender documents, and subsequent tender and appointment process
- Commencement of construction works

Project team



Jonathan Cooper
Project Director
(Stage 1)



Ken Leahy
Project Director
(Stages 2 – 5)



Declan White
Project Manager
(Stage 1)



Eoin Brennan
Project Manager
(Stages 2-5)



Elizabeth Russell
Communications Lead

Contact Us

The emerging preferred option is being presented at a Public Information Day on 20th December 2017. There will be another exhibition prior to submitting the planning application to An Bord Pleanála, and submissions can also be made direct to the Bord at that stage.

You can keep in touch with the project through our website, or via Facebook where we will be posting updates on progress and details of works that are ongoing.

Project Office: JBA Consulting, Unit 24 Grove Island, Corbally, Limerick

Phone: 061 345463

Email: kingsislandfrs@jbaconsulting.ie

Web: www.kingsislandfrs.ie

Facebook: Kings Island Flood Relief Scheme



Verdant Place Advanced Works – Completed in August 2017

NEWSLETTER NO. 3

December 2017

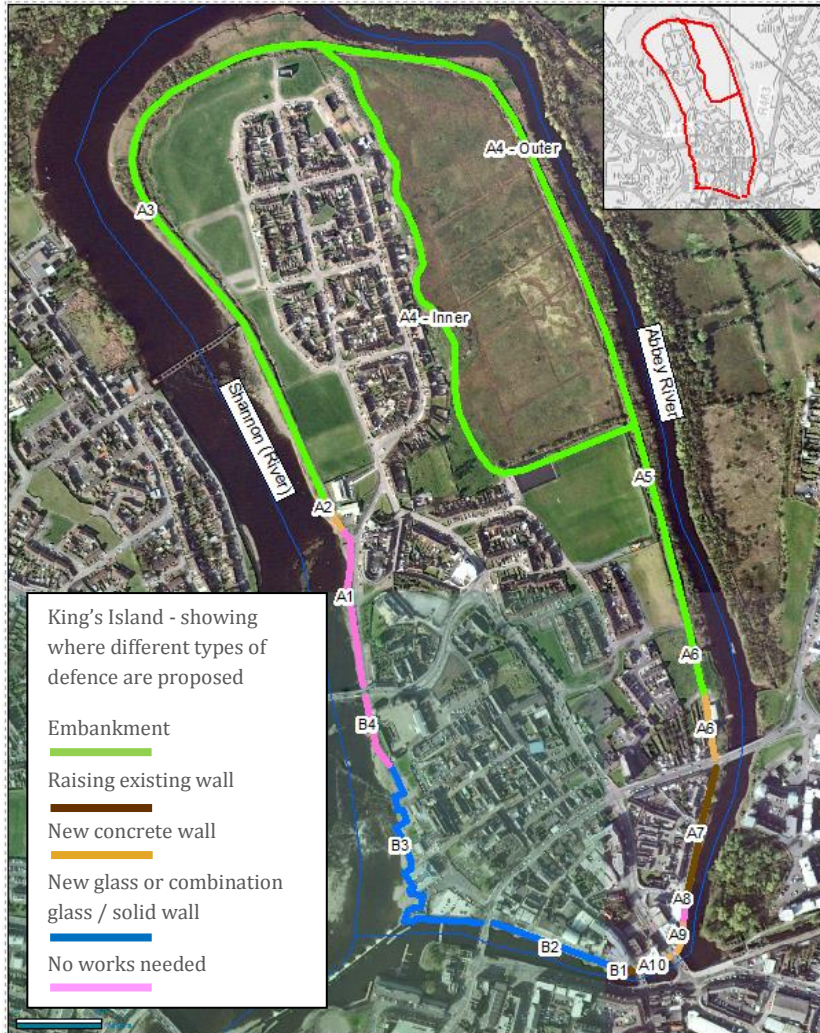


ARUP

JBA consulting

King's Island Main Scheme

The project team have considered a long list of potential flood management measures to arrive at an emerging preferred option. This includes a combination of flood walls and embankments which have been designed to stretch from the north end of Verdant Place, around St. Mary's Park and along Sir Harry's Mall. Glass walls will continue the scheme along George's Quay and around Merchant's Quay.



The emerging preferred option has been identified by balancing the economic, social, cultural heritage and environmental aspects of each of the measures and takes into account feedback received at previous consultation events. It was presented to the Stakeholder Advisory Group on 15 December 2017 for their feedback.

One of the key constraints to the project is the presence of the Lower River Shannon Special Area of Conservation (SAC) which covers part of King's Island and the River Shannon and River Fergus Estuaries Special Protection Area (SPA) is downstream of the Island.

There are two possibilities for the alignment of the embankment to the north-east (see Area A4 on the map). The Inner alignment is the emerging preferred option because it avoids construction within the SAC, and therefore the unknown timetable / success involved in taking the scheme to Stage 4 of Appropriate Assessment, which relies on proving Imperative Reasons of Overriding Public Interest (IROPI) and is largely untested through the planning system in Ireland.



Example Montage of flood relief scheme at George's Quay showing wall with glass panel sections

Verdant Place

The advanced works on Verdant Place were completed in August 2017, and now provide a formal level of protection to the properties lying behind the wall.

We would like to thank all the residents and business owners for accommodating our contractors for the duration of the works.

Main Scheme Programme

Activity	2015	2016	2017	2018	2019	2020
Assemble all the available data	█					
Site Investigation contracts		█				
Environmental Constraints Study	█	█	█			
Options development		█	█	█		
Environmental Impact Assessment			█	█		
Preparation of planning submission				█		
PART 10 Planning Application with An Bord Pleanala					█	
Detailed design for Main Flood Relief Scheme				█	█	
Tender process for Main Flood Relief Scheme					█	
Construction works						█

Key
 Arup JBA led activities █
 Third party led activity █
 Ongoing / completed █