

# CIRATA GBU (PT. PJB – Generation Business Unit)



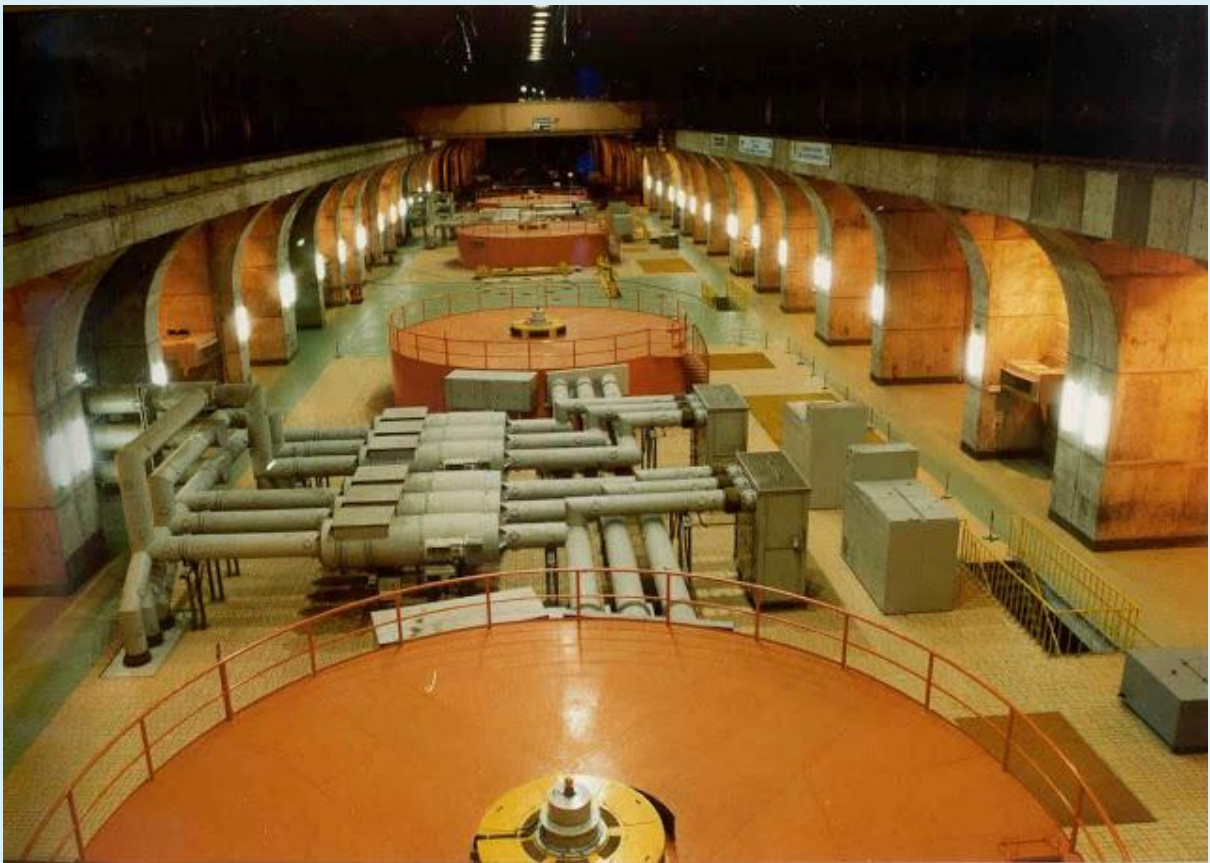
CIRATA



Cirata Generation Unit operates Hydro Electric Power Plant (HEPP) using energy from the water reservoir (lake) Cirata sourced from Citarum river in West Java, located in the village of Cadas Sari, Tegal Waru District, Plered- Purwakarta in West Java, about 60 km northwest of Bandung or 100 km from the city of Jakarta through Purwakarta. Cirata HEPP has 8 units of power plants with total installed capacity of 1008 MW with the average electricity production of 1428 GWh per year.

The 1008 MW capacity is comprising of Cirata I which has four units, each unit operating with 126 MW installed capacity which began operation in 1988 and total installed capacity of 504 MW, in addition Cirata II is also with four units of 126 MW each, which were in operation since 1997 with a total installed capacity of 504 MW. Cirata I and II can produce electricity on average 1428 GWh per year then transmitted through extra high voltage transmission lines to 500 kV interconnection system of Java-Madura-Bali (Jamali).

Cirata power plant is the largest PLTA in Southeast Asia, having an underground 4-floor Power House located at the foot of a mountain. Since the project has a huge reservoir with area of 62 km<sup>2</sup>, 7,626 families were forced to relocate by the project. During the construction, several social supports and safety measures were provided and executed to the resettled people in order to increase the community's welfare or at least to maintain the living standard at the same level as before they were moved. As a result, the project has provided the people with the double income by giving them opportunities to engage themselves in fisheries introducing floating nets in the reservoir created by the project.



Type	Hydro Power Plant
Area	West Java
Coordinates	Latitude= -6.7, Longitude= 107.3676.
Kind of Fuel	Hydro
Power Capacity	8 X 126 MW
Owner	PT. PJB
Shareholders	PT. PLN
Activity Since	1988
Contact	Suhata E Putra – Manager
Address	Desa Cadas Sari, Kecamatan Tegal Waru, Plered Purwakarta 41162 West Java
Email	<a href="mailto:upcrt@ptpjb.com">upcrt@ptpjb.com</a>
Phone & Fax	Phone : 62-264-270840, 270928, Fax : 62-264-270859,
Web	<a href="http://www.ptpjb.com">http://www.ptpjb.com</a>

No. Unit	Turbine			Generator	COD	MW
	Manufacturer	Type	Serial Number			
1	VOEST ALPINE	Francis Vertical	MB.9-078/1	Elin Union	1988	126,00
2	VOEST ALPINE	Francis Vertical	MB.9-078/2	Elin Union	1988	126,00
3	VOEST ALPINE	Francis Vertical	MB.9-078/3	Elin Union	1988	126,00
4	VOEST ALPINE	Francis Vertical	MB.9-078/4	Elin Union	1988	126,00
5	VOEST ALPINE	Francis Vertical	MB.9-078/5	Elin Union	1997	126,00
6	VOEST ALPINE	Francis Vertical	MB.9-078/6	Elin Union	1997	126,00
7	VOEST ALPINE	Francis Vertical	MB.9-078/7	Elin Union	1998	126,00
8	VOEST ALPINE	Francis Vertical	MB.9-078/8	Elin Union	1998	126,00





Sources :

1. <http://www.ptjib.com>
2. <http://www.pln.co.id/>
3. PLN power plant inventory list
4. Other websites