



Your time, talent, and treasure power the collective generosity that **unites Lumberjacks** in pursuit of real-world impact.

Caitlin Brogan, '21 and Dave Cook, '91





---

Through thick and thin,  
you remained steadfast in  
your commitment to build  
a brighter future for NAU.

---

**NAU** NORTHERN  
ARIZONA  
UNIVERSITY  
FOUNDATION

*During our most recently completed fiscal year, July 1, 2020 – June 30, 2021, Northern Arizona University and the NAU Foundation continued to face the challenges of an unprecedented time. However, your thoughtful gifts of **time, talent, and treasure** transformed NAU’s bold vision into meaningful action.*

*As a devoted NAU champion, your commitment to the university is reflected in the statistics and stories of collective progress on the following pages. Your loyalty and support create hope and optimism for a bright future at NAU. Your dedication will live on in future generations of Jacks who learn to lead, strive to improve our world, and choose to serve the greater good.*

**Thank you.**

---



*“Your generosity fills me with great pride, gratitude, and hope for the future. Together, we differentiate NAU’s role within Arizona and the national higher education landscape through our commitment to providing access and value to our students, and to being an engine for equity, opportunity, and prosperity. I will continue to draw on the support of the entire NAU family to blaze the trail to a boundless future for NAU. Thank you.”*

– **Dr. José Luis Cruz Rivera**  
**NAU President**

---



*“As donors, you are an investor in critical learning and discovery for young adults. This year as the pandemic continued, NAU students and the campus were challenged. Students needed extra support to stay enrolled, the demand globally for critical research was at an all-time high, which meant the Lumberjack spirit was needed to ignite hope for the future. In this moment of challenge, you responded. Thank you!”*

– **Dave Franke**  
**NAU Foundation Board Chair**

---

# Steadfast stewards

NAU's volunteer leaders are some of the university's most visible and stalwart champions. Their pride and support inspire alumni and friends to advance NAU's mission and expand our reach, influence, and worldwide impact.

*Service during fiscal year 2021 (July 1, 2020 – June 30, 2021):*

## **NAU Foundation Board**

*Barbara McCloud, '78, Chair*  
*David Franke, Vice Chair*  
*Victoria Fimea, '83, Secretary*  
*Robin Braun, '77, '12\*, Treasurer*  
*George Adams, '74*  
*Lisa Bagwell, '89*  
*Bob Bement*  
*Robert Braudy*  
*Donald Brooks, '76*  
*Dick Gerkin, '75*  
*William Heibel, '70, '73*  
*Tim Kinney, '82*  
*Carmelle Malkovich, '03*  
*Peggy Nelson*  
*Dave Noosinow, '82*  
*Sandy Owen, '86*  
*Amy Peña, '94*  
*Thomas Perkins, '80*  
*Rick Rodriguez, '84*  
*Tony Tewelis*  
*Lynn Valbuena, '18\**

*\*Honorary doctorate*

## **NAU Alumni Association Board**

*Carmelle Malkovich, '03, President*  
*Joseph Mead, '83, Vice President*  
*Wayne Watson, '84, Officer-at-Large*  
*Maggie Thom, '12, '17, NAU-TEN Officer*  
*Josh Aldred, '03*  
*Colleen Belford, '06*  
*Trina George, '09*  
*Alex Gutierrez, '85*  
*Jana Harper, '90*  
*Stephanie Hastings, '96*  
*Melvin Hunter, Jr., '10*  
*James Jayne, '91*  
*Rick Koch, '72*  
*Barbara McCloud, '78*  
*Mary O'Driscoll, '82*  
*Katie Patten, '09*  
*Janet Sweigart, '83*  
*Cathy Wylet, '82*



*Northern Arizona University sits at the base of the San Francisco Peaks, on homelands sacred to Native Americans throughout the region. We honor their past, present, and future generations, who have lived here for millennia and will forever call this place home.*



---

## Collective impact

Your generosity impacts the trajectory of the next generation of leaders, change agents, and community stewards. It's also measured by the advancements on campus, across Arizona, and around the world.

This year, donors like you shared passion and purpose by:

- creating new scholarships
- endowing professorships
- unlocking Giving Day challenges
- addressing housing and food insecurities
- elevating student-athlete success
- advancing scientific and cultural discovery

Donor support for these funds and others provides boundless opportunities and hope for the future. To see the magnitude of your generosity, visit [foundationnau.org/impact](https://foundationnau.org/impact).



# Facts and figures



*Number of gifts*  
**14,369**



*Average gift*  
**\$1,300**



**Total donors**  
**9,453**

*Alumni donors*  
**3,417**

*First-time donors*  
**2,067**

*Donors for 5+ consecutive years*  
**1,155**

**KNAU**



*Dollars raised*  
**\$1,318,773**

*Donors*  
**4,416**

**Gifts <\$1,000**



*Dollars raised*  
**\$1,218,351**

*Number of donors*  
**8,549**

## Alumni gifts of time and talent



*Alumni volunteers*  
**236**



*Alumni volunteer activities*  
**70**

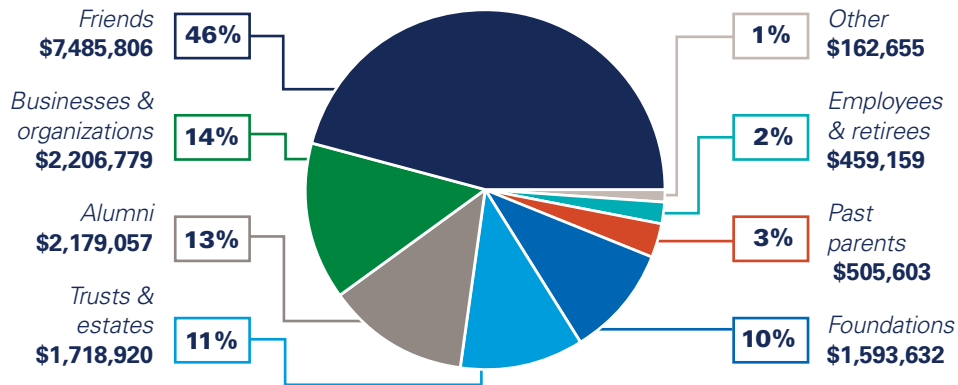


*Alumni chapter members*  
**2,485**

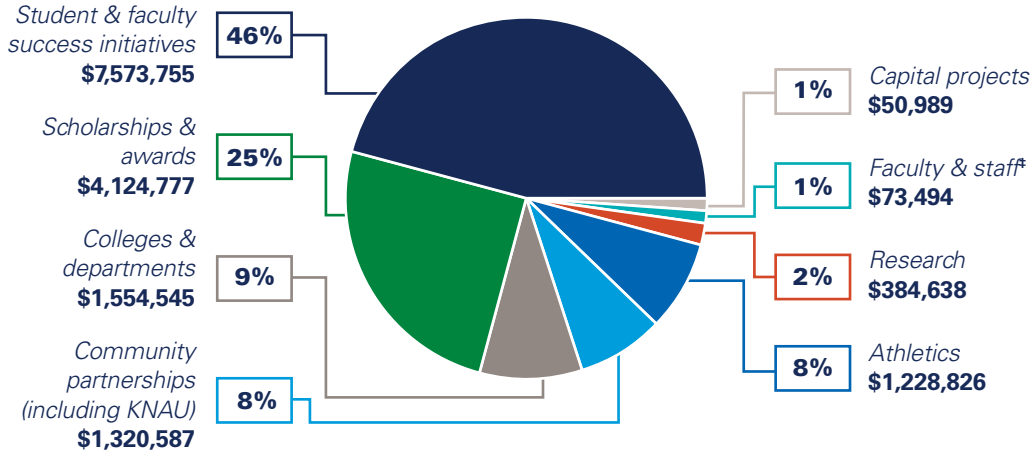


# Facts and figures

## Who invested in the NAU Foundation?†



## Where did donors invest?



## How did donors invest?



**Endowments**  
\$3,273,385



**Current-use funds**  
\$13,038,230



**Planned gifts**  
\$1,352,500

† Each donor is counted in a single category. Alumni employees are counted as alumni, for example.

‡ i.e., Professorships, awards, and recognition, etc.

# Giving Day: April 14, 2021

NAU Giving Day celebrated what makes our community extraordinary: the kind, passionate, and generous people who care about NAU and its students. Every Axe of Kindness—no matter the size—impacted the NAU experience and united the Lumberjack family.



## \$491,273

raised

**1,400**  
gifts



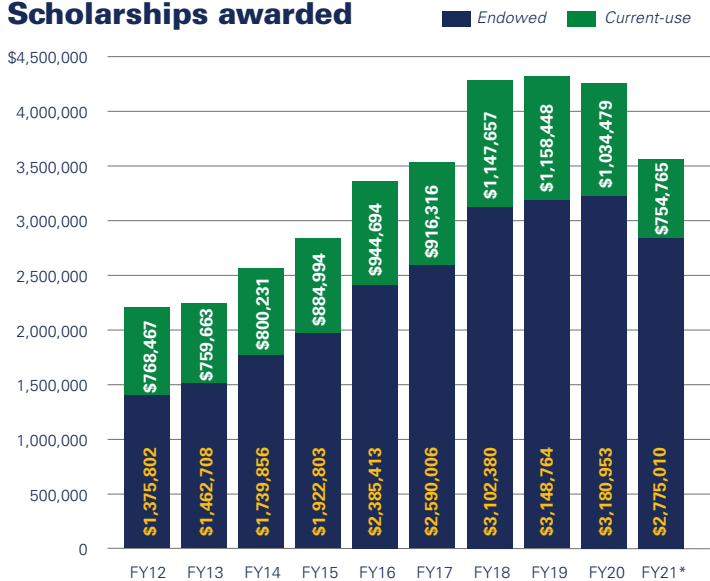
**37**

matches and  
challenges  
unlocked

## Scholarships

Scholarship donors and alumni like you know that NAU's education is worth every penny. So do the students who work hard to make their scholarships count. NAU's scholarship donors reduce the barriers of student loan debt and the need for multiple jobs, empower involvement in extracurricular activities, and support student dreams.

### Scholarships awarded



**In FY21,  
scholarship  
donors created**

**12**

new  
scholarship  
endowments

**13**

new  
current-use  
scholarships

**2,206**

scholarships  
awarded

\* Due to the COVID-19 pandemic during FY21, a number of scholarships were not distributed to students. For example, study abroad scholarships were held or used for other purposes due to travel restrictions.



---

## Authentic narratives

The following stories are proof points of your investments. They illustrate the good that Lumberjacks can do when philanthropy supports:

- curing diseases
- finding solutions for a changing climate
- caring for others
- innovating technological advances
- inspiring an entrepreneurial spirit
- boosting joy through art and music
- creating access and opportunity for all

To meet even more inspiring students, donors, and programs, visit [foundationnau.org/impact](https://foundationnau.org/impact).





## *Partners in student access and belonging*

*Donor support enhances NAU's focus on creating a culture of inclusive excellence, ensuring that students from all backgrounds and identities are embraced and supported through their educational journey. Whether following their parents' footsteps to NAU, or forging their own path as first-generation students, members of the Lumberjack community find compassion, commitment, and connection.*





---

## Hungate Family Elevating Opportunity Fund

**Donors: Randy and Kathy Hungate**



*Family values and traditions for Randy Hungate, '79 and Kathy Hungate, '78 are reflected in their support of NAU's distinct programs serving historically underrepresented Lumberjack students. This year, the Hungate Fund supported students by providing funds for counseling needs, helping students with emergency funds related to COVID-19 impacts, and equipping Louie's Cupboard to aid Lumberjacks facing food insecurity.*

---

## Bettin Fund for Blavin Scholars

**Donors: Tuck and Jeannette Bettin**

*Tuck and Jeannette Bettin's investment in NAU's Blavin Scholars program multiplies its life-changing impact for youth aging out of foster care, making college a realistic opportunity with both scholarships and a network of support programs and connections. The couple's gift inspires students to embark on their journey with a renewed hope and spirit.*



---

## LGBTQIA Commission Scholarship Endowment



*The LGBTQIA Commission empowers promising lesbian, gay, bisexual, transgender, queer, intersex, and asexual students to achieve their full academic and leadership potential while affirming their identity. Donors and the Commission are working to endow the scholarship and ensure NAU can help build a strong, inclusive, and uplifting community.*

*Throughout the report, we celebrate the generosity of donors by indicating their membership in one or more of the NAU Foundation's donor recognition societies. To learn more about donor recognition, visit [foundationau.org/recognition](https://foundationau.org/recognition).*



**LA CUESTA**  
Society



**1899**  
Society



**LUMBERJACK**  
Leaders





**Ivan Rubalcava, '22, Nursing, Yuma Educational Success Scholarship**  
**Donor: Helios Education Foundation**

# *“NAU believed in me before I even believed in myself.”*

---

## **Saying YES to success**



*Ivan Rubalcava, '22 set his heart on becoming a nurse during adolescence, but as a first-generation student, the path to attain his goal wasn't always clear. He struggled to navigate college coursework, build connections, manage his finances with two part-time jobs, and access essential resources. These stressors amplified his tachycardia, stress, and anxiety. Connecting the dots from his dreams to reality proved difficult.*

*Thanks to the Helios Education Foundation's support of NAU's collaborative Yuma Educational Success (YES) initiative, Ivan received a scholarship and access to a wealth of support programs at the NAU–Yuma campus. The YES program creates college-going cultures for low-income, first-generation, minority high school students. The initiative serves 200 students each academic semester, increasing student connections to academic services, mentoring, career planning, and financial planning. The innovative and impact-driven program aims to help more students on their path toward postsecondary success.*

*Ivan's mentors and academic specialists offered him the right tools to support him emotionally. "When my family tested positive for COVID-19, I wasn't sure I could handle one more obstacle," Ivan said. "However, the YES staff generously went out of their way to check on my family, helped me stay on track, and built my confidence. NAU believed in me before I even believed in myself."*

*The YES initiative is retooling the first year of college. "Helios Education Foundation is committed to ensuring that more students pursue and complete a postsecondary degree," said Paul J. Luna, president and CEO of Helios Education Foundation. "The Yuma Educational Success Program will help do just that."*

*Today, Ivan is thriving in his academic pursuits and has the tools he needs to focus on his success. "The support I've received has helped me navigate my transition to NAU," Ivan said. "Without it, I would not be at NAU this semester, and I'd be missing out on my dream of serving others. The YES program has helped me overcome life obstacles, and I'm ready to face any challenge head-on."*



## *Experiential learning is the Lumberjack experience*

*Hands-on learning is a cornerstone of the Lumberjack experience. Financial commitment, mentorship, and guidance from alumni and donors create new and exciting opportunities for students to network with fellow Lumberjacks. Students gain beyond-the-classroom experience in their chosen field and develop personal and professional skills. These transformative experiences provide a running start along a student's career path and set Lumberjacks apart as they prepare to enter the workforce.*



---

## Wilson Family Lumberjacks Thrive Externship Program

**Donors: Greg and Nancy Wilson**



**Kate Millard, '20, '22**  
Sociology, M.Ed. Counseling  
and Student Affairs

*Kate Millard, '20, '22 connects fellow students with unique experiential learning opportunities through the Wilson Family Graduate Assistantship. The first to fill this new role with Alumni Engagement while pursuing her master's degree, Kate has appreciated the financial support and real-world knowledge application while pursuing her dream career. "Graduate school at NAU has been the best experience of my life—something which was made possible by my position with the Lumberjacks Thrive Program," she shared. As a liaison between students and alumni, she curates meaningful engagement to create lifelong connections and strengthen the Lumberjack network.*



**Bethany Robinson, '22**  
Biology, Chemistry, and  
Psychology

*As the daughter of a 2000 alumna, Bethany Robinson, '22 carries on the tradition of Lumberjack excellence in her family. Guidance from NAU Career Development and others paved the way for scholarships, awards, job opportunities, and her Lumberjacks Thrive externship. Her connection with Rhian Allvin, '94 prepared her for a future in advocacy and a career in healthcare. "NAU's support has provided me with countless opportunities that I would never have thought were possible as an undergraduate Honors College student. One day I hope to use my experiences to serve the rural community as a medical provider," shared Bethany.*

*"The Lumberjacks Thrive externship allowed me to develop my networking and leadership skills, which will help me as I prepare for a career in criminal justice. My mentor is extremely helpful, and we plan to continue our relationship beyond the externship."*

**Sydney Ashton, '22**  
Psychological Sciences

*"My mentor shared valuable career advice about what it's like to be an engineer and own a business in today's environment. I wouldn't have the confidence to apply for my next internship without his guidance, and I'm grateful for the support of fellow Lumberjacks."*

**Samantha Milligan, '22**  
Computer Science





**Caitlin Brogan, '21**, *Environmental and Sustainability Studies, Wilson Family Lumberjacks Thrive Externship Program*  
**Lumberjacks Thrive Externship donors: Greg and Nancy Wilson, '82**



*“The program provided hands-on experience and connections that took my classroom knowledge to the next level.”*

---

### **Lumberjacks Thrive**



*As someone passionate about conserving the natural world, Caitlin Brogan, '21 found her place in NAU's Environmental and Sustainability Studies program—but her experience was shaped by much more than what she learned in the classroom. “The scholarships I received allowed me to spend less time working to fund my education and more time serving the NAU community,” Caitlin*

*explained. The time afforded by her scholarships was certainly well-spent, judging by her list of experiences, which include working as a NASA Space Grant Undergraduate Researcher, Arizona Game and Fish Department intern, and more.*

*The most impactful experience was her participation in the Lumberjacks Thrive Externship program. This donor-funded initiative matches students with executive-level Lumberjack alumni for an immersive, real-world look into professional realities. Although the onset of the COVID-19 pandemic challenged the initial design of a one-week, in-person externship experience, the program participants adapted to a year-long virtual externship. The upside: the mentor and mentee relationship was deepened through an extended virtual experience.*

*Caitlin was paired with Dave Cook, '91, principal geologist and co-owner of Aspect Consulting, an environmental, earth science, and engineering consulting firm in Seattle, Washington. She and Dave met regularly, and Caitlin even attended Aspect's team meetings to hear updates on projects. “We accomplished so much despite the pandemic. I'm so proud of her and honored to be her mentor,” Dave said. Caitlin thoroughly enjoyed her externship and learned many valuable career and networking skills. “The program provided hands-on experience and connections that took my classroom knowledge to the next level,” Caitlin explained. “I am proud to be part of the NAU community that values quality education and diverse experiences. Lumberjacks share an alma mater and a zest for life!”*



---

## **Knight-Swift Transportation Holdings, Inc.**

**Donor: Knight-Swift Transportation Holdings, Inc.**



*As the nation's largest truckload motor carrier, Knight-Swift Transportation Holdings understands the need for well-trained risk management and insurance specialist employees. Knight-Swift established a fund to support scholarships and an experiential learning program to influence the next generation*

*of risk management professionals. "We wanted to be able to support students in their pursuit of less conventional career options, and NAU felt like a great fit because of their individualized, hands-on approach," said Brett Sant, senior vice president of risk management for Knight-Swift. Each year, an NAU student will receive a scholarship; additional funding will support opportunities for students to engage in internships, externships, and job shadowing in the risk management and insurance field.*

---

## **CEIAS Career Services Fund**

**Donors: Brian and Alice Garcia**



*Past NAU parents Brian and Alice Garcia spent their careers in STEM fields, and their son James "Matt" Garcia, '13, Mechanical Engineering, followed in his parents' footsteps. As the number of students earning STEM degrees increased, Brian and Alice were inspired to support a 10-week internship experience with Moonshot at the Northern Arizona Center for Entrepreneurship and Technology. The internship helps students prepare for their career or learn the fundamentals to build successful start-ups. "NAU provides an excellent academic and social environment for students, and we'd like to see that environment continue to thrive," said the couple.*





*Propelling innovative minds  
to boundless excellence*

*Impactful research, scholarly pursuits, and creative activities are at the forefront of NAU's commitment to a value-driven education. Donor generosity allows students to explore life-altering research and pioneer discoveries in environmental science, mental health, microbiology, astronomy, health science, and more. Faculty and students are generating new interdisciplinary collaborations and opening doors to new realms of evidence-based discovery.*







**George Testo, '23**, *Microbiology, Jean Shuler Mini-Grant*  
**Donor: Jean Shuler**

*“Support from donors makes a positive difference for students like me from diverse backgrounds.”*

---

### **Progress built on passion and mentorship**



*Undergraduate researcher and Microbiology major George Testo, '23 was drawn to NAU because of his passion for translational research.*

*In early 2020, this inspiring researcher began training under the supervision of Dr. Emily Cope and peers at the Pathogen and Microbiome Institute (PMI).*

*As an undergraduate research assistant,*

*George is actively engaged in microbiome research, where he is learning intuitive lab techniques such as 16S rRNA gene sequencing and shotgun metagenomics.*

*“My research currently focuses on the removal of human DNA from clinical samples, so that we can better study microbes that are associated with diseases such as Alzheimer’s disease, chronic rhinosinusitis, and cancer,” explained George. After attending NAU, the ambitious Lumberjack wishes to pursue an MD/PhD in Immunology. “I will use my present NAU research as a backbone in my search for breakthroughs in microbiology and immunology,” he said.*

*George’s fruitful time at NAU has allowed him to become more confident pursuing prestigious academic opportunities. By studying at the NAU Honors College and working at PMI, George is primed for graduate school and his future career path in translational medicine.*

*“Support from donors makes a positive difference for students like me from diverse backgrounds.”*



---

## Dr. Mickey Urdea Student Research Award



**Donor: Mickey Urdea, '74**



**Zachariah Bess, '22**  
Chemistry

*For Zachariah Bess, '22, his interest in chemistry goes back to his formative years. Zachariah grew up with a father diagnosed with schizophrenia and bipolar disorder. The lack of pharmaceutical treatment caused him to be absent from his son's life.*

*Knowing first-hand the toll that a parent's mental illness takes on a child, the young researcher wishes to devote his professional life to studying the biochemical roots of psychological disorders and helping those affected by them.*

*As Zachariah continues to grow in his roles as a student and researcher, he understands and appreciates the positive impact donor contributions have had on his NAU experience.*

*"I can put even more energy into my research now that the financial stress is eased a little," he said. "Thank you for not only providing funding but seeing the potential and promise that I have in the scientific field."*

---

## The Joanna Sturm Conservation Fund



**Donor: Joanna Sturm**



*NAU is expanding its research, teaching, and outreach in the Williams, Arizona area thanks to a philanthropic gift to support NAU's purchase of the Historic Hat Ranch. The ranch will become the premier site and model for connecting people to the Colorado Plateau. Through place-based teaching and learning, students will foster a deep appreciation for the land. Collaborative partnerships with public, private, and Tribal partners will drive innovation, science-based solutions for climate change, restoration of degraded lands, and sustainable recreation.*

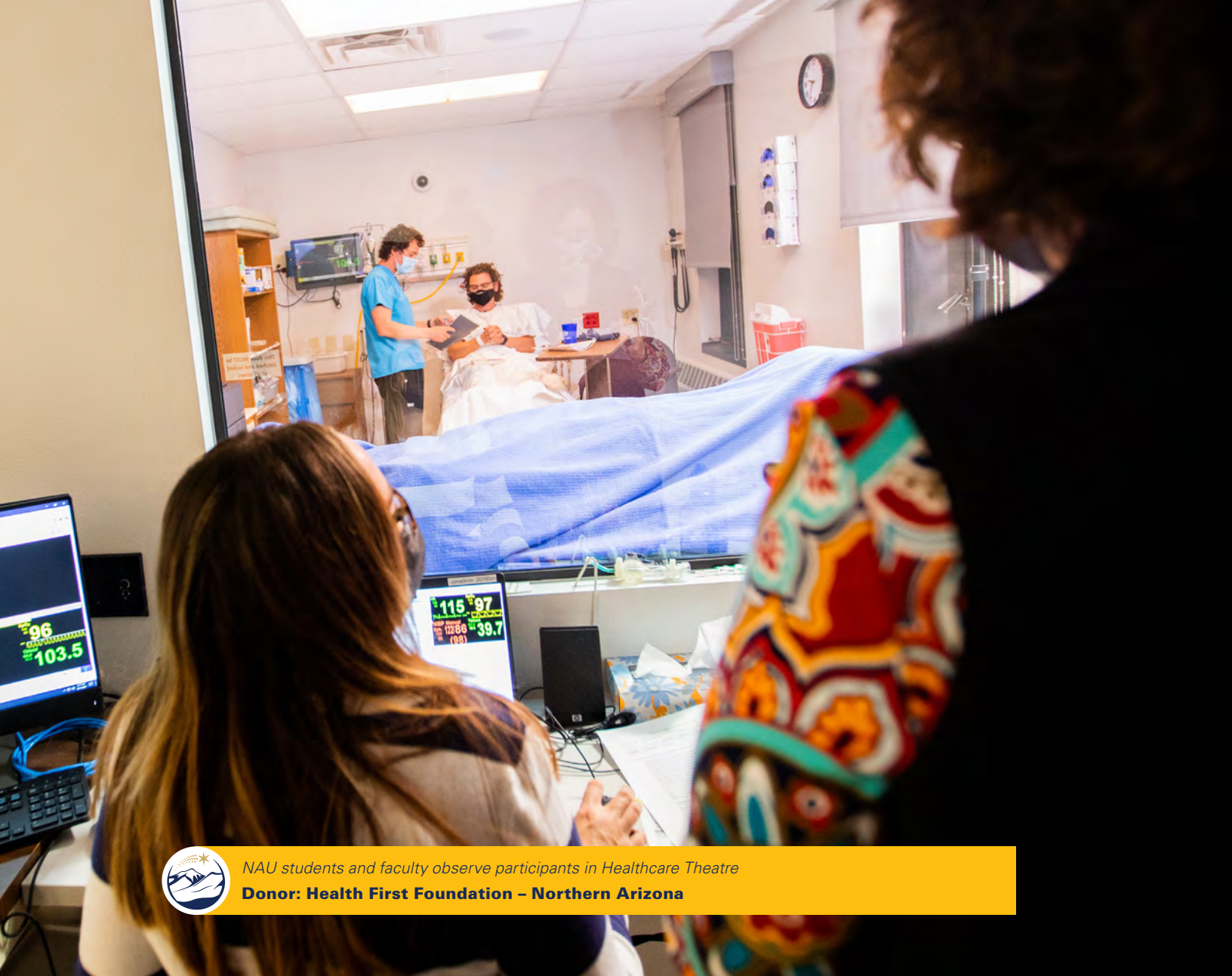


## Improving health outcomes

*Philanthropic investment powers NAU's commitment to equip students to thrive in a rapidly changing environment, create innovative partnerships, and build upon its mission to become a leading university serving Native American and Indigenous cultures. Your generosity helps NAU find new ways to deliver on the promise of better lives for all Arizonans.*







NAU students and faculty observe participants in Healthcare Theatre  
**Donor: Health First Foundation – Northern Arizona**

## John and Sophie Ottens Foundation



**Donor: John and Sophie Ottens Foundation**



*The John and Sophie Ottens Foundation has donated more than \$13 million to NAU over the last 31 years, supporting Native American teaching professionals and healthcare workers in northern Arizona’s Native American communities. Before the organization sunsets, the Ottens Foundation fulfilled its final pledge to fund NAU projects supporting Native American programs in the College of Health and Human Services well into the future.*

*“This important work will contribute to the improvement of behavioral health outcomes.”*

---

### **Cross-discipline collaboration**



*Meeting the needs of the region requires creative collaboration. The Arizona Department of Health Services has designated northern Arizona as a Mental Health Professional Shortage Area. Philanthropic investment from the Health First Foundation – Northern Arizona supported the inception of a new interdisciplinary program called*

*NAU Healthcare Theatre. It combines allied health and performing arts education to improve community behavioral health outcomes.*

*Only five other universities in the country offer this program model, emphasizing NAU’s commitment to providing cutting-edge education.*

*NAU Theatre students enrolled in this course apply their acting skills beyond the stage. Taking on the role of “standardized patients,” they simulate healthcare scenarios, providing NAU Nursing and Allied Health students and community healthcare providers with hands-on learning, including scenarios for suicide prevention, bipolar disorder, and anxiety. Utilizing standardized patients in healthcare education is an innovative teaching method, allowing healthcare professionals to develop skills for patient-centered communication, relationship-building, and motivational interviewing.*

*Simulations are viewed, monitored, and tracked through observation rooms and screens. The program as a whole creates a continuous pool of standardized patients for the benefit of northern Arizona. “The foundation is excited to invest in this type of innovative program that harnesses different talents and collaborations for the benefit of community health and well-being,” said Sandra Kowalski, president and CEO of the Health First Foundation – Northern Arizona. “This important work will contribute to the improvement of behavioral health outcomes.”*



## *Honoring legacies with gifts of education*

*Memorial gifts from family and friends honor dedication, accomplishments, and connections to NAU while inspiring Lumberjacks to carry the torch of excellence into the future. A desire to empower students through memorial gifts is a powerful and enduring way to remember the lives of loved ones.*





---

## **A. Yago Scholarship**

**Donor: Arianne Yago, '18, '20**



*Proud first-generation alumna and NAU employee Arianne Yago created the A. Yago Scholarship to give back by helping other first-generation students succeed. Arianne named the scholarship in honor of her late grandfather, Antonio Yago, who helped fund her NAU tuition. Arianne wishes to honor her grandfather's passion and commitment to education through this scholarship.*

---

## **Eugene and Margaret Ann Hughes Hotel and Restaurant Management Scholarship**

*To celebrate the life of NAU's 12th president Dr. Eugene Hughes, who passed away in March 2021, donors honored his leadership legacy and philanthropic commitment to the university by making gifts in his memory. The donations support the Eugene and Margaret Ann Hughes Hotel and Restaurant Management Scholarship established by the couple in 2006.*



---

## **Dale Hoskins Memorial Fund**



*Honoring the life and legacy of retired NAU School of Communication faculty member Dale Hoskins, an anonymous staff member and alum created a fund named for the beloved mentor. On NAU Giving Day dozens of donors across generations joined to build the fund, which will provide experiential opportunities for students studying multi-platform media.*





**Kirsten Butzow, '92**



*“NAU students are helping my family honor the memory of our loved ones.”*

---

### **A legacy of love**



*Coping with sorrow after losing loved ones can present a lifelong struggle, but Flagstaff native Kirsten Butzow, '92, found healing and peace of mind in a positive and impactful NAU memorial.*

*Twelve years ago, Kirsten lost her sister, Elaine, '92, and brother-in-law, Justin, '92. The unexpected loss led Kirsten and her family to establish the Elaine Loven Memorial Scholarship and the Justin P. Carder Memorial Scholarship.*

*“My family has a rich history with NAU and holds a deep belief in the power of education. We endowed these scholarships in their names and the subjects they studied while at NAU,” reflected Kirsten. “It seemed like a natural way to preserve their memory while helping others attain their education goals.”*

*Inspired by Elaine’s NAU degree in German, her namesake scholarship supports modern language students to study abroad. Justin’s scholarship honors his passion for preserving the environment, assisting Lumberjacks majoring in biology, chemistry, environmental science, education, forestry, or geology.*

*“It is difficult to articulate the true impact; however, we see it on the students’ faces when we meet them every year,” Kirsten said. “They think we are helping them, but they are really helping us honor the memory of Elaine and Justin by creating a brighter future through the pursuit of their education.”*



## Lumberjacks for Life

*Lumberjacks past and present from all degrees and backgrounds share a love for NAU and a commitment to their communities and careers. Year after year Lumberjacks demonstrate their perseverance no matter the circumstance. Distance, time, and even a global pandemic are not enough to keep Lumberjacks apart—or slow them down. The generosity and kindness demonstrated by alumni are inspiring and influencing the next generation of Jacks.*





---

## NAU Alumni Association Distinguished Alumni Award winners

The Northern Arizona University Alumni Association bestows five awards to distinguished alumni who have demonstrated excellence in their careers, performed extraordinary community service and volunteerism, or embodied and promoted the spirit of the university. To learn more, visit [foundationau.org/alumni-awards](http://foundationau.org/alumni-awards).



### Jeff Ferris Volunteer of the Year

Michael Swinarski, '99 never lets his distance from NAU get in the way of his Lumberjack pride. He is a founding member and chapter leader for the Portland, Oregon Alumni Chapter, an ambassador for NAU Giving Day, and served on The W. A. Franke College of Business Information Systems Advisory Council. In addition to giving his time and talents, he is a loyal donor to The W. A. Franke College of Business.



### Cliff Harkins Distinguished Citizen of the Year

Karolyn Kent, '91 is a loyal donor to the NAU Foundation. She volunteers for the NAU Alumni Association and participates in Phoenix and Flagstaff Alumni Chapter activities. Her leadership while assistant city manager of Mesa, Arizona, was integral to the city's COVID-19 response. Her 25 years of service are a testament to the tenacity of the Lumberjack spirit.



### Dwight Patterson Alumnus of the Year

Damon Clarke, '86, '91, '98 has dedicated his life to serving others, including his alma mater. He is chairman of the Hualapai Tribe, a member of the NAU Native American Advisory Board, and an advocate for the health, education, and well-being of the Hualapai Tribe on local, state, and national levels. He credits his late wife, Drusilla, as a supporting force behind his success.



### Excellence in Achievement by a Recent Graduate

Craig Smith, '13 has kept his love of learning alive by giving his time and talent back to his alma mater as an adjunct instructor for NAU Physical Therapy students. He supports and mentors students during their clinical rotations and conducts research projects with NAU's Departments of Physical Therapy and Athletic Training.



### Joe and Marie Rolle Spirit of NAU Award

As students, Lumberjack couple Greg and Nancy Wilson, '82 were involved in honor societies, advocacy groups, and spirit organizations like the Logjammers. Their Lumberjack pride is as strong as ever—they regularly support the NAU President's Fund for Excellence, NAU Giving Day, and established the Logjammers Student Spirit Scholarship. They were also inspired to establish the Lumberjacks Thrive Program (see pages 13–15).





**Bobby Stuckey, '92**



*“My time at NAU helped create who I am today and provided an atmosphere for me to succeed.”*

---

### **Pairing service with advocacy**



*The hospitality industry was devastated by the COVID-19 pandemic, but Robert “Bobby” Stuckey, ’92 demonstrated the resilience of the Lumberjack spirit—and still found numerous ways to give back to NAU.*

*Pre-pandemic, Bobby hosted an alumni gathering at Frasca Food and Wine, his restaurant in Boulder, Colorado. When restaurant protocols limited in-person interactions early in the pandemic, Bobby directed his time and talent to mentoring Lumberjack students. He participated in an Alumni Speaker Series panel event, where he shared his experience and advice with students and alumni about pivoting in the hospitality field during the COVID-19 pandemic.*

*Bobby wants to give back to NAU because of the impact his alma mater*

*had on him. “School was always a challenge as a dyslexic student, but I like to think NAU was up for my challenge!” Bobby said as he was inducted into The W. A. Franke College of Business Hall of Fame in 2020. “My time at NAU helped create who I am today and provided an atmosphere for me to succeed.” And succeed he has: Bobby co-founded the Independent Restaurant Coalition, which advocated for legislation to establish \$26 billion for restaurants struggling during the pandemic. His generosity and advocacy demonstrate the passion and grit of the NAU alumni family and will influence Lumberjack students and alumni for years to come.*





*Jacksfunder:  
Connecting passion and possibility*

*Your kindness empowers students' success and creativity. Through Jacksfunder—NAU's new crowd-funding platform—donors directly support many different student- and faculty-led projects. Students gain valuable professional skills by advocating for their projects through outreach to their networks. Fundraising goal progress and project implementation are tracked on Jacksfunder, giving supporters a front-row seat to their impact.*

*Thanks to the contributions to the Students for Sustainable Living and Urban Gardening (SSLUG) Garden Jacksfunder project, students engaged in hands-on sustainable food production.*

**58 donors funded \$4,625**

*“Donations allow us to invest in equipment and supplies that will benefit future NAU canoe teams.”*

---

### **Concrete Canoe Competition**



*A concrete canoe sounds like an oxymoron, but it presented an exciting opportunity for NAU’s Civil Engineering students. The students put their engineering education into practice for the annual regional American Society of Civil Engineers competition. In order to design and build their concrete canoe, they needed help covering the costs of supplies, equipment, and conference registration.*

*Through Jacksfunder, the team learned how to define their target audience, develop a communications plan, and create a webpage with engaging content to motivate donors to give. Their teamwork and dedication paid off—they met their \$5,000 fundraising goal with the help of 34 donors. They achieved their engineering goal, too, placing fourth out of 18 at the competition*

*in spring 2021. “Donations allow us to invest in equipment and supplies that will benefit future NAU canoe teams.” – NAU Concrete Canoe Team member.*

*For a glimpse into the wide variety of ventures that highlight the talents and passions of NAU students, visit **[crowdfund.foundationnau.org](https://crowdfund.foundationnau.org)**.*

**34 donors funded \$5,000**



---

## Speech-Language-Hearing Clinic



*When the COVID-19 pandemic disrupted their planned fundraising event, the Speech-Language-Hearing Clinic turned to Jacksfunder. Thanks to enthusiastic community support, their Jacksfunder project surpassed its \$5,000 goal. The funding will remove financial barriers for children and adults with communication disorders that often lead to poor academic performance, bullying, and social isolation. Under the supervision of clinical NAU faculty, graduate NAU student clinicians provide evaluation and therapy services to patients in person and through telepractice.*

**46 donors funded \$5,450**

---

## HRM Student-Run Dining Room

*Thanks to engaged donors and a successful Jacksfunder project, the NAU School of Hotel and Restaurant Management will launch a student-run upscale dining room stocked with place settings, dishes, glassware, service carts, and storage armoires. When it opens in spring 2022, the space will provide students with the hands-on experience needed to be successful in the food and beverage side of the hospitality industry while also hosting special community events.*



**58 donors funded \$12,895**



## *Boundless classrooms*

*Learning happens everywhere. NAU's mission to create and support active, engaging, and practical learning experiences powerfully prepares students to thrive. Thanks to donor investment in beyond-the-classroom experiences, Lumberjack students advance their knowledge and skills to make an impact in their careers.*







**Autumn Begay, '22**, *Applied Indigenous Studies and Museum Studies, R. Carlos Nakai Scholarship in Social and Behavioral Science*  
**Donors: R. Carlos Nakai, '79, '94 and Pamela Hyde-Nakai**

*“Donor support gave me an opportunity to become more confident in different kinds of environments.”*

---

### **Preserving and perpetuating Diné culture**



*Since arriving in Flagstaff, Autumn Begay, '22 has immersed herself in a scholarly journey to explore and preserve the rich culture of her Navajo roots and the history of Indigenous communities. She is making the most of her education and learning experiences through the many classes, programs, and events that NAU hosts.*

*Autumn is building a community at NAU's Native American Cultural Center (NACC), where she connects with other Indigenous scholars, mentors students, and has created lifelong friendships. While the NACC is Autumn's home away from home, she also ventures out in search of new experiences. "Donor support gave me an opportunity to become more confident in different kinds of environments. Coming from the Navajo Nation, there was little diversity or resources in my community and school, but at NAU, there are both," she said. "The extracurricular clubs that I participated in gave me the opportunities to travel off-campus to gain volunteer work experience, and this brought me out of my comfort zone."*

*With her NAU degree, Autumn plans to become a museum curator. "I aspire to work in a museum because I hope to teach and engage people on Indigenous arts, culture, language, and Indigenous futurism," she explained. "I would focus on Indigenous food sovereignty and language revitalization for the Navajo Nation because it is crucial for the next generation to have access to what is truly ours."*



---

## Bement Family Teacher Inspiration Endowment



**Donors: Bob and Claudia Bement**



**Caitlyn Faley, '22**  
Special and Elementary Education

*Transitioning to online learning was a challenge for Caitlyn Faley, '22, but she ultimately found it a unique and wonderful experience. "I felt very connected to my peers and my professors even though we were on Zoom. I appreciated all of the engaging discussions, group work, and projects," Caitlyn said. In the spring of 2021, donor support allowed Caitlyn to attend NAU's "There's a Reason I'm a Teacher" annual conference, supported by the Bement Family Teacher Inspiration Endowment. There, she expanded her knowledge of best practices and emerging trends in education.*



---

## Gary Kane Semester Abroad Scholarship



**Donor: Gary Kane, '69**




*Gary Kane believes that a well-rounded educational journey includes studying abroad. The Gary Kane Semester Abroad Scholarship allows Lumberjacks to experience the first-hand benefits of living in a foreign country. Students expand their personal and professional horizons by learning a new language, exploring new cultures, meeting new people, and creating inspiring memories for years to come.*



## *Breaking records, titles, and ground*

*After the dust settled on one of the most challenging years for sports, NAU Athletics emerged triumphant, sweeping the Big Sky Conference All-Sport Trophies for the sixth time in the university's history. Student-athlete adaptability and determination contributed to the significant accomplishments experienced in competition and the classroom. Your dedication and vision help maximize the academic and athletic potential of NAU student-athletes.*



*NAU Athletics is thrilled to announce the completion of the Student-Athlete High Performance Center in January 2022. This groundbreaking facility will serve the academic and athletic needs of all 350+ Lumberjack student-athletes. The future is bright for NAU Athletics because of the continued support of our Skyjacks members and the great partnerships formed across campus.*





**Nico Young, '24**, *Exercise Science, William R. and Mary B. Hathaway Scholarship*  
**Donor: The Estate of William R. Hathaway**



*“Your dedication has greatly influenced my enthusiasm to perform and deliver what NAU deserves—championships.”*

---

**Positioned for immediate success**



NAU men's cross country team wins fourth national championship in five years. (Young, third from right)

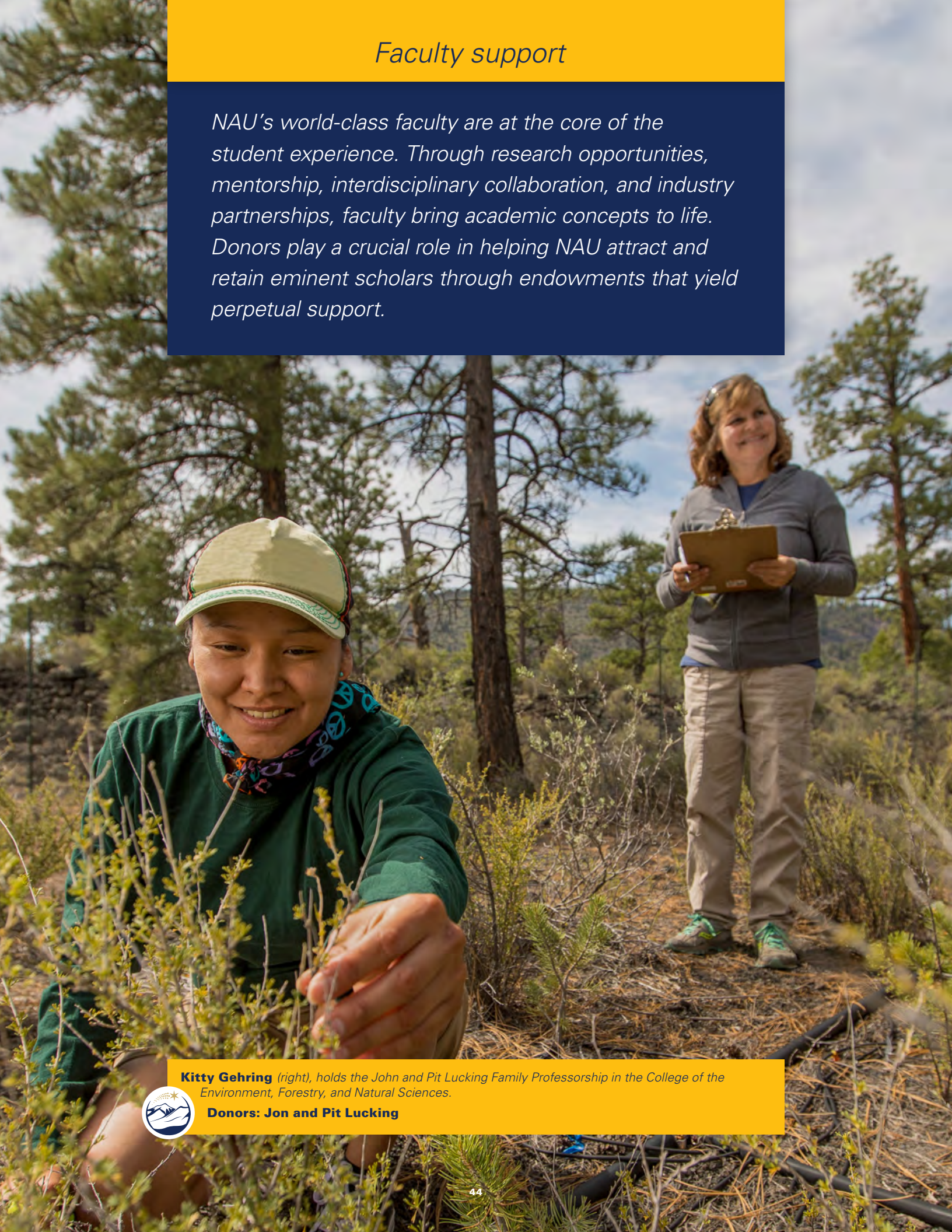
NAU distance runner Nico Young, '24 smashed records during his first athletic year as a Lumberjack. COVID-19 restrictions limited races across the country and created uncertainty throughout the year, but the limits inspired a renewed focus. “The races I did get to compete in made each performance even more important,” said Nico. He broke the under-20 American record in 5K, qualified for the Olympic Trials, produced the fourth-fastest 5K race in NAU history, and with his fourth-place finish helped lead the NAU Men's Cross Country team to its fourth national championship.

Nico attributes his academic and student-athlete success to his professors, coaches, and donors to NAU Athletics. “Your dedication has greatly influenced my enthusiasm to perform and deliver what NAU deserves—championships,” he said.



## Faculty support

*NAU's world-class faculty are at the core of the student experience. Through research opportunities, mentorship, interdisciplinary collaboration, and industry partnerships, faculty bring academic concepts to life. Donors play a crucial role in helping NAU attract and retain eminent scholars through endowments that yield perpetual support.*



**Kitty Gehring** (right), holds the John and Pit Lucking Family Professorship in the College of the Environment, Forestry, and Natural Sciences.

**Donors: Jon and Pit Lucking**





---

## Endowment funds empowered faculty during FY21



**Paul Flikkema** (right), Inaugural Wolf Gumberman Professor in Honors.

*Brian Boyd, The W. A. Franke College of Business: Ralph M. Bilby Endowed Chair*

*Nic Clement, Educational Leadership: E.W. McFarland Citizen's Chair in Education\**

*Max Dass, Center for Science Teaching and Learning: J. Lawrence Walkup Distinguished Professorship*

*Jap Efendi, Accountancy: The W. A. Franke College of Business Endowed Professorship in Accounting\**

*Paul Flikkema, Electrical Engineering and Computer Science: Wolf Gumberman Professorship in Honors\**

*Pete Fulé, '90, '96, Regents' Professor, Forestry: Charles O. Minor Endowed Professorship in Forestry\**

*Kitty Gehring, Biological Sciences: John and Pit Lucking Family Professorship in CEFNS\**

*Bruce Hungate, Regents' Professor and Director, Center for Ecosystem Science and Society: McAllister Chair in Community, Culture, and Environment\**

*Paul Keim, '77, '13, Regents' Professor, Microbiology; Executive Director, Pathogen and Microbiome Institute: E. Raymond and Ruth Reed Cowden Chair*

*Björn Krondorfer, Regents' Professor, Director: Martin-Springer Institute for Teaching the Holocaust, Tolerance, and Humanitarian Values\**

*Julie Mueller, Economics: Marley Professor of Business*

*Julie Piering, Philosophy: Richard A. Wood Philosophy Professorship\**

*Christine Regalla, Earth and Sustainability: Ernest Duebendorfer and Charles Barnes Structural Geology Professorship\**

*Juliette Roddy, '89, Criminology and Criminal Justice: The NARBHA Institute James Wurgler MD Chair of Criminal Justice and Behavioral Health\**

*Chris Scherpereel, Management, Franke Professor in Business: The W. A. Franke College of Business Endowment\**

*Tom Sisk, Director, Landscape Conservation Initiative: The Charles Olajos and Ted Goslow Chair for Southwestern Environmental Science and Policy\**

*Greg Stock, Management, Franke Professor in Business: The W. A. Franke College of Business Endowment*

*Kevin Trainor, Marketing, Franke Professor in Business: The W. A. Franke College of Business Endowment*

*Rose Marie Ylimaki, Educational Leadership: Del and Jewell Lewis Endowed Chair in Educational Leadership\**

*Yulei Gavin Zhang, Information Systems, Franke Professor in Business: The W. A. Franke College of Business Endowment*

*Yan Mandy Dang, Information Systems, Franke Professor in Business: The W. A. Franke College of Business Endowment\**

\* These funds unlocked an additional \$1,850,638 through the Arizona Board of Regents Eminent Scholars Match program to supplement eligible, endowed faculty funds.



---

## NAU Foundation financials

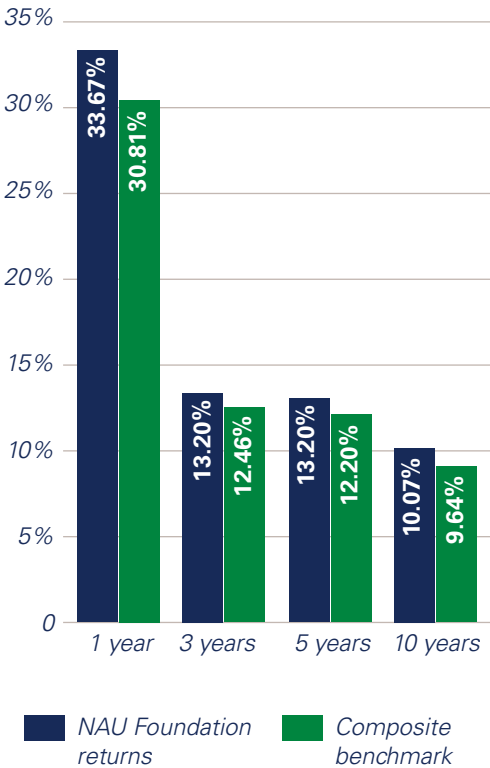
Many factors influence the value of the NAU Foundation investment portfolio and individual endowed funds, including gifts to each fund, overall endowment distribution, and investment earnings based on market performance.

With careful oversight by the NAU Foundation Board Investment Committee and management by Vanguard, the investment strategy is conservative and designed to weather large market fluctuations.



## Overall investment performance reached a new peak of \$253,413,528

### Investment return FY21



The NAU Foundation’s overall investment portfolio—comprised of endowed and current-use funds and other assets—reached a new peak, thanks to donor generosity and a successful investment strategy that yielded 33.67 percent returns for FY21.

The NAU Foundation manages its portfolio as a long-term investment. The values represented here are at a point in time, while stock market performance changes on a daily basis. Over 10 years the investment portfolio yielded an average of 10.07 percent. The chart to the left compares the NAU Foundation’s investment returns to the Vanguard composite benchmark. As of FY21, NAU Foundation investments outperformed the benchmark on one-, three-, five-, and ten-year horizons.

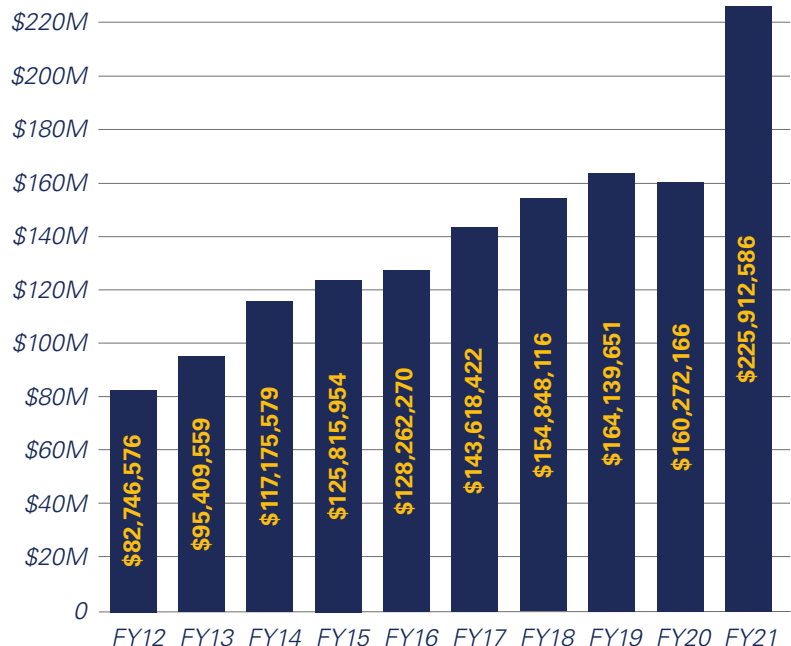
In addition, the Student Managed Investment Fund (SMIF) was created to allow finance students in The W. A. Franke College of Business to gain hands-on experience in investment research and portfolio management. Working with faculty and the NAU Foundation Investment Committee, members of SMIF have built on the initial allocation of \$500,000 in 2000, growing the SMIF portfolio to more than \$6.7 million as of June 30, 2021.

## Endowment growth

Endowment market value as of June 30, 2021:

**\$225,912,586**

In FY21, donors created 23 new endowed funds, bringing the total to 897 funds restricted in perpetuity for donor priorities. These funds will lead the way to a better Arizona and a sustainable world through student support, research, public service, and creative endeavors.

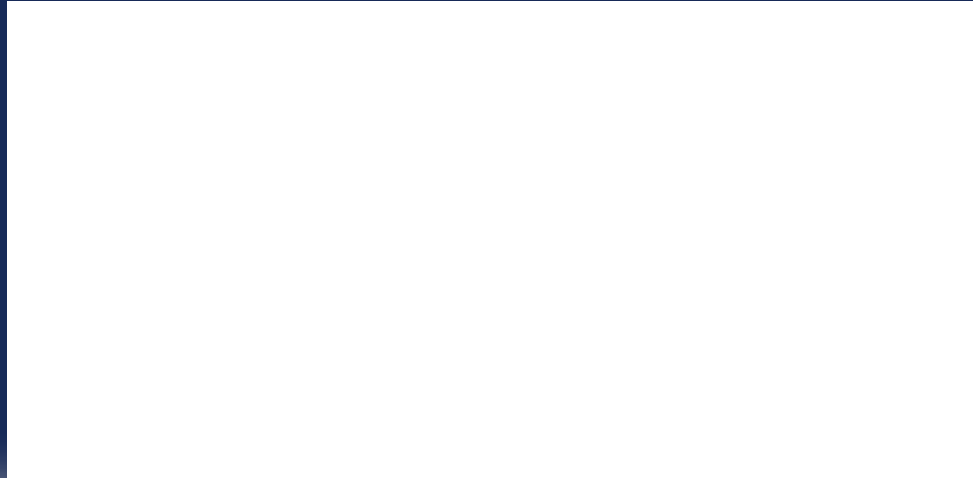




**Pictured Below: Zachariah Bess, '22**

*NAU is committed to the health and safety of students, faculty, and staff and follows CDC's recommended guidelines on COVID-19. Not every photo in this publication will precisely represent these guidelines, as we aim to accurately present the NAU experience for you and balance that need with imagery that reflects the COVID-19 policies we have in place. Visit [nau.edu/jacksareback](https://nau.edu/jacksareback) for our current campus health safety guidelines.*

*NAU is an Equal Opportunity/Affirmative Action Institution/  
UM696367\_11.21*



---

NAU students, donors, and programs are making a bold and boundless future possible. Visit [foundationnau.org/impact](https://foundationnau.org/impact) to read more stories.

---