



CUPA ROMANIEI RAURENI Feminin



2. round

Match Team Statistics

Match No.

CS Activ 31 - 33 CS Dacia Mioveni :

Prahova-Ploiesti

(14 - 16) (15 - 13) (SO: 2 - 4)

23.2.2023. 17:30

Attendance:

Sala Sporturilor Olimpia

Ploiesti

Referees: Adrian Dorin Georgescu (ROU) / Mihai Moldoveanu (ROU)

CS Activ Prahova-Ploiesti

#	Surname and name	S	Goals / shots								Attack					Def.			Penalties				TP					
			Tot.	%	9m	6m	Wing	7m	FB	Brk.	LD	As.	PC	E7	E2	TF	St.	C7	Blk	YC	2m	R		B				
2	NICA Cristina																											9:59
4	ARVATU Ada Ioana		2/3	67	0/1			2/2																			1	14:06
5	TAMAS Larisa Ecaterina	S	4/5	80	2/3			1/1						1	1												1	40:35
7	VIZITIU Patricia		2/3	67	2/3									1														5:15
8	ARVATU Mara Andreea	S	5/7	71		1/2		2/3	2/2						3											1	1	49:29
10	MOLDOVEANU Gabriela	S	5/11	45	1/4			2/3	1/3	1/1					1											1	2	46:01
11	POPESCU Catalina Florina		4/7	57	2/3	0/1	0/1	1/1						1		1												38:10
12	DUMITRIU Alexandra-Maria																											0:12
13	DUMITRASCU Anamaria Alexandra		2/2	100		1/1									1												1	15:38
15	IVANENKO Anna	S	0/2	0	0/1			0/1																				15:09
19	PARASCHIV Ioana Sabina	S												1														30:00
20	CSAVAR Zsofia		2/3	67	0/1	1/1																					1	27:38
25	GRADISTEANU Daria																											8:07
29	ANDRITA Elena Diana	S	2/4	50	2/4										1													38:16
58	DIACONU Diana Stefania		0/1	0						0/1			1															29:30
97	SAVA Catalina Georgiana	S	3/3	100				3/3							1													51:55
Team / bench																												
UKUPNO			31/51	61	9/20	3/5	6/8	6/10	3/3	4/4	0/1	3	0	4	7	0	1	2	0	2	6	0	0					

#	Surname and name	Saves / shots								
		Tot.	%	9m	6m	Wing	7m	FB	Brk.	LD
12	DUMITRIU Alexandra-Maria	0/3	0				0/3			
19	PARASCHIV Ioana Sabina	6/22	27	4/13	0/1	2/5	0/1	0/1	0/1	
58	DIACONU Diana Stefania	2/16	13	1/5	0/2	0/6	1/3			
TOTAL		8/41	20	5/18	0/3	2/11	1/7	0/1	0/1	0/0

Coach: Dragos Dobrescu

Number of attacks: 49, Efficiency: 63%, Average Duration: 43.11 seconds

Attack by type of defense

	Shots	9m	6m	Wing	TF	E7	E2
On def. 6-0	22/37	9/20	3/5	6/8	0	4	7
Fastbreak	3/3				0	0	0

Defense by type

	Total	9m	6m	Wing	Stl.	C7	2m
Def. 6-0	26/38	13/19	3/3	9/15	1	2	6
Fastbreak	1/1				0	0	0

Attack with superiority / minority / goalkeeper out

	Attack				Reaction		
	Att.	Eff.	Shots	TF	FB	LD	Tot.
6 on 6	28	54%	15/28	0			
6 on 5	13	69%	9/13	0			
5 on 6	6	83%	5/6	0			
5 on 5	1	100%	1/1	0			
4 on 6	1	100%	1/1	0			

Player superiority / GK out counted at the end of attack (in case it changes during attack)

Defense with superiority / minority / goalkeeper out

	Attack				Reaction		
	Att.	Eff.	Shots	TF	FB	LD	Tot.
6 on 6 (GK out)	1	0%	0/1	0	0/0	0/0	0/0
6 on 6	32	75%	24/32	0			
5 on 6	6	67%	4/5	1			
6 on 5	4	75%	3/4	0			
6 on 3	2	100%	2/2	0			

Numbers show attacking numbers of opponent. Lower efficiency of opponent means better defense of this team

Jersey number Tot. Total shooting 6m 6m (line) shooting 9m 9m shooting Wng Wing shooting FB Fastbreak sh. 7m 7m penalty sh.
 Brk. Breakthrough sh. LD Long distance sh. As. Assists PC Pass clear chance E7 Earned 7m pen. TF Technical faults St. Steals
 2m 2m punishments C7 Committed 7m E2 Earned 2m pun. YC Yellow cards R/B Red/Blue cards Blk. Blocks S Starting Line-up

Handball statistics and livescore by Toma-soft ltd (www.toma-soft.hr)



CUPA ROMANIEI RAURENI Feminin



2. round

Match Team Statistics

Match No.

CS Activ 31 - 33 CS Dacia Mioveni ; Prahova-Ploiesti

(14 - 16) (15 - 13) (SO: 2 - 4)

23.2.2023. 17:30

Attendance:

Sala Sporturilor Olimpia

Ploiesti

Referees: Adrian Dorin Georgescu (ROU) / Mihai Moldoveanu (ROU)

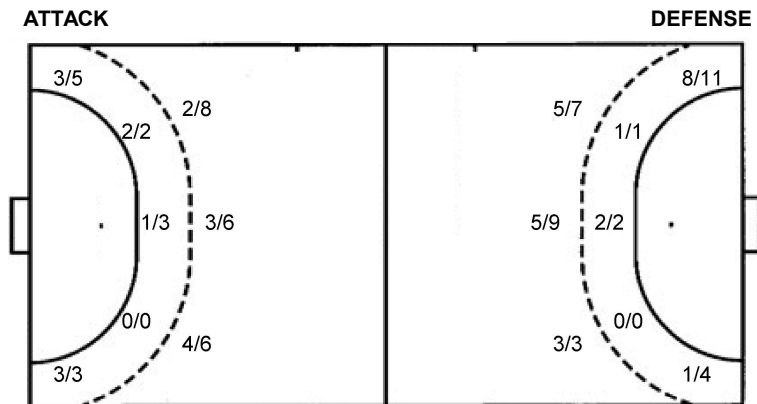
Shot distribution by player

2 C. Nica	4 A. Arvatu	5 L. Tamas	7 P. Vizitiu	8 M. Arvatu	10 G. Moldoveanu	11 C. Popescu
	1/1 1/1			3/4	0/1 3/5	1/1
			1/1		0/1	
	0/1	1/1 0/1 2/2	0/1 1/1	2/2	1/1 1/1	2/3 0/1 1/2
				1 miss.	1 miss. 1 block	
13 A. Dumitrascu	15 A. Ivanenko	20 Z. Csavar	25 D. Gradisteanu	29 E. Andrita	97 C. Sava	TOTAL
		2/2			1/1	6/8 2/2 6/9
				1/2		1/2
1/1 1/1				1/2	1/1	8/10 0/4 7/8
	2 miss.	1 post			1/1 lob	1 post 4 miss. 1 block 1/1 lob

Saves distribution goalkeepers

12 A. Dumitriu	19 I. Paraschiv	58 D. Diaconu	TOTAL
0/1	1/2 1/2	0/2 0/1 0/3	1/4 0/1 1/6
	1/1	1/1	1/1 1/1
0/2	1/5 1/1 1/9	0/3 1/5	1/10 1/1 2/14

Shots by position



7m penalties 6/10
Fastbreak 3/3
Breakthrough 4/4
Long dist. 0/1

7m penalties 6/7
Fastbreak 1/1
Breakthrough 1/1
Long dist. 0/1

Shooting statistics

Position	Goals	Sav.	Miss.	Post	Blk.	Total	%
Back (9m)	9	8	1	1	1	20	45
Line (6m)	3	1	1	0	0	5	60
Wing	6	1	1	0	0	8	75
7m penalties	6	3	1	0	0	10	60
Fastbreak	3	0	0	0	0	3	100
Breakthrough	4	0	0	0	0	4	100
Total	31	13	4	1	1	50	62

Jersey number Tot. Total shooting 6m 6m (line) shooting 9m 9m shooting Wng Wing shooting FB Fastbreak sh. 7m 7m penalty sh.
Brk. Breakthrough sh. LD Long distance sh. As. Assists PC Pass clear chance E7 Earned 7m pen. TF Technical faults St. Steals
2m 2m punishments C7. Committed 7m E2 Earned 2m pun. YC. Yellow cards R/B Red/Blue cards Blk. Blocks S Starting Line-up

Handball statistics and livescore by Toma-soft ltd (www.toma-soft.hr)



CUPA ROMANIEI RAURENI Feminin



2. round

Match Team Statistics

Match No.

CS Activ 31 - 33 CS Dacia Mioveni :

Prahova-Ploiesti

(14 - 16) (15 - 13) (SO: 2 - 4)

23.2.2023. 17:30

Attendance:

Sala Sporturilor Olimpia

Ploiesti

Referees: Adrian Dorin Georgescu (ROU) / Mihai Moldoveanu (ROU)

CS Dacia Mioveni 2012

#	Surname and name	S	Goals / shots									Attack					Def.			Penalties				TP		
			Tot.	%	9m	6m	Wing	7m	FB	Brk.	LD	As.	PC	E7	E2	TF	St.	C7	Blk	YC	2m	R	B			
3	NITU Geanina Elena		0/1	0			0/1																			11:02
5	VIZUETE Judith	S	5/6	83	4/5			1/1								2								1		42:34
7	SIMION Ana Maria	S	2/3	67			1/2	1/1										1						1		40:09
8	GEORGESCU Ioana Alexandra		0/2	0	0/2																					11:09
9	CHIS IVAN Irina																							1	2	22:20
10	KRSNIK Dora		0/1	0				0/1																		
12	MIRCA OLARIU Ana Maria																									
17	SARATEANU Bianca		7/8	88	1/1		3/4	3/3							1	1										
21	ION Madalina										1															
23	ILIE Marina Alexandra		5/5	100		1/1	3/3	1/1										1								
28	CIRJAN Roxana Diana	S	2/2	100		2/2										2										27:52
29	MOLDOVAN POPA Laura		2/2	100	1/1					1/1							1	1					1	1		26:24
67	LAZAR Costela Stefania	S	4/5	80	3/3		0/1		1/1						1											48:58
93	MILIC Bojana		2/4	50	2/4													1						2		40:59
94	CONSTANTINESCU Maria Claudia	S	2/4	50	2/3		0/1																			20:55
99	NICOLAE Raluca		2/4	50		2/3					0/1														1	14:38
	Team / bench																							1	1	
	UKUPNO		33/47	70	13/19	3/3	9/15	6/7	1/1	1/1	0/1	1	0	2	5	1	0	4	0	4	8	0	0			

#	Surname and name	Saves / shots								
		Tot.	%	9m	6m	Wing	7m	FB	Brk.	LD
12	MIRCA OLARIU Ana Maria	6/22	27	4/9	0/2	0/3	2/5	0/2	0/1	
21	ION Madalina	7/22	32	4/8	1/2	1/4	1/4	0/1	0/3	
	TOTAL	13/44	30	8/17	1/4	1/7	3/9	0/3	0/4	0/0

Coach: **Robert Licu**

Number of attacks: 45, Efficiency: 73%, Average Duration: 43.67 seconds

Attack by type of defense

	Shots	9m	6m	Wing	TF	E7	E2
On def. 6-0	26/38	13/19	3/3	9/15	1	2	5
Fastbreak	1/1				0	0	0

Defense by type

	Total	9m	6m	Wing	Stl.	C7	2m
Def. 6-0	22/37	9/20	3/5	6/8	0	4	8
Fastbreak	3/3				0	0	0

Attack with superiority / minority / goalkeeper out

	Attack				Reaction		
	Att.	Eff.	Shots	TF	FB	LD	Tot.
6 on 6 (GK out)	1	0%	0/1	0	0/0	0/0	0/0
6 on 6	32	75%	24/32	0			
5 on 6	6	67%	4/5	1			
6 on 5	4	75%	3/4	0			
6 on 3	2	100%	2/2	0			

Player superiority / GK out counted at the end of attack (in case it changes during attack)

Defense with superiority / minority / goalkeeper out

	Attack				Reaction		
	Att.	Eff.	Shots	TF	FB	LD	Tot.
6 on 6	28	54%	15/28	0			
6 on 5	13	69%	9/13	0			
5 on 6	6	83%	5/6	0			
5 on 5	1	100%	1/1	0			
4 on 6	1	100%	1/1	0			

Numbers show attacking numbers of opponent. Lower efficiency of opponent means better defense of this team

Jersey number Tot. Total shooting 6m 6m (line) shooting 9m 9m shooting Wng Wing shooting FB Fastbreak sh. 7m 7m penalty sh.
 Brk. Breakthrough sh. LD Long distance sh. As. Assists PC Pass clear chance E7 Earned 7m pen. TF Technical faults St. Steals
 2m 2m punishments C7. Committed 7m E2 Earned 2m pun. YC. Yellow cards R/B Red/Blue cards Blk. Blocks S Starting Line-up

Handball statistics and livescore by Toma-soft ltd (www.toma-soft.hr)



CUPA ROMANIEI RAURENI Feminin



2. round

Match Team Statistics

Match No.

CS Activ 31 - 33 CS Dacia Mioveni :

Prahova-Ploiesti

(14 - 16) (15 - 13) (SO: 2 - 4)

23.2.2023. 17:30

Attendance:

Sala Sporturilor Olimpia

Ploiesti

Referees: Adrian Dorin Georgescu (ROU) / Mihai Moldoveanu (ROU)

Shot distribution by player

3 G. Nitu

1 miss.

5 J. Vizuetu

2/2		1/1
1/1	0/1	1/1

7 A. Simion

	1/1	
1/1		

1 post

8 I. Georgescu

0/1		0/1

9 I. Chis Ivan

10 D. Krsnik

		0/1

17 B. Sarateanu

		1/1
1/1		3/3

1 miss. 2/2 lob

23 M. Ilie

2/2		2/2

1/1 lob

28 R. Cirjan

1/1		1/1

29 L. Moldovan Popa

1/1		1/1

67 C. Lazar

0/1		
2/2		2/2

93 B. Milic

1/1		1/1
		0/1

1 miss.

94 M. Constantinescu

0/1		0/1
		2/2

99 R. Nicolae

		2/2

2 miss.

TOTAL

3/4	1/1	5/6
0/1		0/1
9/10	0/1	12/14

1 post 5 miss. 3/3 lob

Saves distribution goalkeepers

12 A. Mirca Olariu

1/4	0/1	1/2
	0/1	
1/6	3/3	0/4

21 M. Ion

1/4	0/1	2/7
	1/1	
1/4	1/1	1/4

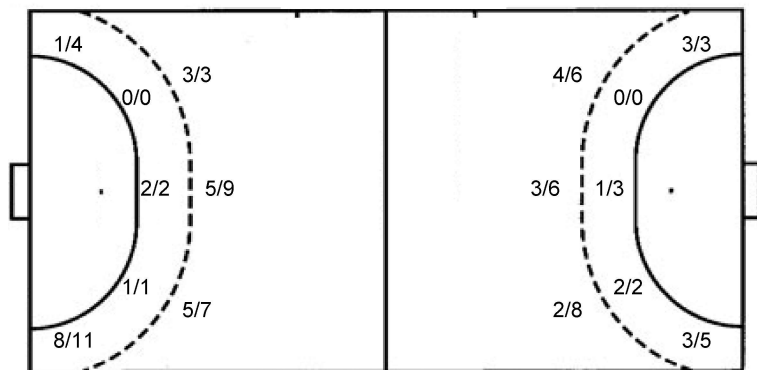
TOTAL

2/8	0/2	3/9
	1/2	
2/10	4/4	1/8

Shots by position

ATTACK

DEFENSE



7m penalties 6/7

Fastbreak 1/1

Breakthrough 1/1

Long dist. 0/1

7m penalties 6/10

Fastbreak 3/3

Breakthrough 4/4

Long dist. 0/1

Shooting statistics

Position	Goals	Sav.	Miss.	Post	Blk.	Total	%
Back (9m)	13	5	1	0	0	19	68
Line (6m)	3	0	0	0	0	3	100
Wing	9	2	3	1	0	15	60
7m penalties	6	1	0	0	0	7	86
Fastbreak	1	0	0	0	0	1	100
Breakthrough	1	0	0	0	0	1	100
Total	33	8	4	1	0	46	72

Jersey number Tot. Total shooting 6m 6m (line) shooting 9m 9m shooting Wng Wing shooting FB Fastbreak sh. 7m 7m penalty sh.
 Brk. Breakthrough sh. LD Long distance sh. As. Assists PC Pass clear chance E7 Earned 7m pen. TF Technical faults St. Steals
 2m 2m punishments C7. Committed 7m E2 Earned 2m pun. YC. Yellow cards R/B Red/Blue cards Blk. Blocks S Starting Line-up

Handball statistics and livescore by Toma-soft ltd (www.toma-soft.hr)

