



LIGA FLORILOR MOL 22-23

17. round



Match Team Statistics

Match No.

CS HC Zalau 23 - 34 CSM Bucuresti
(11 - 16) (12 - 18)

25.2.2023. 11:00

Attendance:

Sala Sporturilor Gheorghe

Tadici

Referees: Anton Draganescu (ROU) / Silviu Radulescu (ROU)

CS HC Zalau

Players		Goals / shots										Attack					Def.			Penalties			TP		
#	Surname and name	S	Tot.	%	9m	6m	Wing	7m	FB	Brk.	LD	As.	PC	E7	E2	TF	St.	C7	Blk	YC	2m	R		B	
1	TAGEAN Viorica																								9:09
3	NICHITEAN Diana		0/1	0	0/1																				0:20
5	LAZIC Emilija	S	2/9	22	1/6			0/1		1/2					1						1				29:35
6	BERBECE Andrada Bianca	S	0/2	0	0/2									1		2						1			32:54
8	STAMIN Roberta-Maria	S	2/4	50			1/3				1/1					2									40:50
10	VRABIE Alexandra Gabriela	S	2/3	67			2/3							1	1										53:35
11	BUJOR Andreea Maria		4/11	36	3/9	1/1		0/1						1	1		1	1							30:11
12	TEODORESCU Paula Vasilica	S																							50:51
14	MOISIN Viorica-Florentina		3/3	100		2/2			1/1																29:04
15	MIHART Ana-Maria Andreea	S	4/7	57	1/3			2/2		1/2		1		1	1	1									32:44
16	POPESCU Andreea Alexandra Elena																								
18	TOTH Krisztina Katakina		2/3	67				2/3				2		1											24:15
19	PRY COP Tatyana Oleksandra		3/4	75	1/1	0/1				2/2				1		1						1			33:31
20	BALACEANU Ioana Beatrice																								22:57
22	MARIN Iuliana-Daniela		1/1	100		1/1									1										10:52
23	NAUMENKO Adriyana	S	0/1	0	0/1									1											19:12
Team / bench																									
UKUPNO			23/49	47	6/23	4/5	3/6	4/7	1/1	4/6	1/1	3	0	7	5	6	1	1	0		1	3	0	0	

Goalkeepers		Saves / shots									
#	Surname and name	Tot.	%	9m	6m	Wing	7m	FB	Brk.	LD	
1	TAGEAN Viorica	1/5	20	1/3			0/1	0/1			
12	TEODORESCU Paula Vasilica	6/36	17	3/10	2/7	1/6	0/2	0/2	0/9		
16	POPESCU Andreea Alexandra Elena										
TOTAL		7/41	17	4/13	2/7	1/6	0/3	0/3	0/9	0/0	

Coach: Gheorghe Tadici

Number of attacks: 50, Efficiency: 46%, Average Duration: 39.90 seconds

Attack by type of defense

	Shots	9m	6m	Wing	TF	E7	E2
On def. 6-0	17/40	6/23	4/5	3/6	6	7	5
Fastbreak	1/1				0	0	0

Defense by type

	Total	9m	6m	Wing	Stl.	C7	2m
Def. 6-0	28/39	9/15	5/8	5/7	1	1	3
Fastbreak	3/3				0	0	0

Attack with superiority / minority / goalkeeper out

	Attack				Reaction		
	Att.	Eff.	Shots	TF	FB	LD	Tot.
6 on 6	37	38%	14/32	5			
6 on 5	9	78%	7/9	0			
5 on 6	3	33%	1/2	1			
5 on 5	1	100%	1/1	0			

Player superiority / GK out counted at the end of attack (in case it changes during attack)

Defense with superiority / minority / goalkeeper out

	Attack				Reaction		
	Att.	Eff.	Shots	TF	FB	LD	Tot.
6 on 6	40	63%	25/34	6			
5 on 6	6	50%	3/4	2			
6 on 5	4	100%	4/4	0			
5 on 5	3	67%	2/2	1			

Numbers show attacking numbers of opponent. Lower efficiency of opponent means better defense of this team

Jersey number Tot. Total shooting 6m 6m (line) shooting 9m 9m shooting Wng Wing shooting FB Fastbreak sh. 7m 7m penalty sh.
 Brk. Breakthrough sh. LD Long distance sh. As. Assists PC Pass clear chance E7 Earned 7m pen. TF Technical faults St. Steals
 2m 2m punishments C7. Committed 7m E2 Earned 2m pun. YC. Yellow cards R/B Red/Blue cards Blk. Blocks S Starting Line-up

Handball statistics and livescore by Toma-soft ltd (www.toma-soft.hr)



Match Team Statistics

Match No.

CS HC Zalau 23 - 34 CSM Bucuresti

(11 - 16) (12 - 18)

25.2.2023. 11:00

Attendance:

Sala Sporturilor Gheorghe

Tadici

Referees: Anton Draganescu (ROU) / Silviu Radulescu (ROU)

Shot distribution by player

3 D. Nichitean

1 post

5 E. Lazic

	0/1	
		1/1
1/2	0/1	0/1

1 miss. 2 block

6 A. Berbece

0/1		

1 miss.

8 R. Stamin

		1/1
	1/1	
0/1		

1 post

10 A. Vrabie

1/2		
1/1		

11 A. Bujor

	0/1	2/2
		1/1
	0/1	1/3

1 miss. 2 block

14 V. Moisin

1/1		
1/1		1/1

15 A. Mihart

1/2		1/1
1/1		
		1/1

1 post 1 miss.

18 K. Toth

	0/1	
	1/1	

1/1 lob

19 T. Prycop

	0/1	
1/1		
1/1		1/1

20 I. Balaceanu

22 I. Marin

1/1 lob

23 A. Naumenko

	0/1	

TOTAL

3/5	0/3	4/4
2/2	1/2	2/2
4/7	1/3	4/8

3 post 4 miss. 4 block 2/2 lob

Saves distribution goalkeepers

1 V. Tagean

1/2		0/1
0/1		0/1

12 P. Teodorescu

2/8	1/1	0/6
		0/1
1/10		2/9

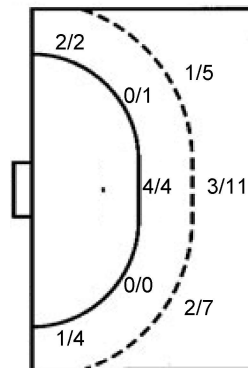
16 A. Popescu

TOTAL

3/10	1/1	0/7
		0/1
1/11		2/10

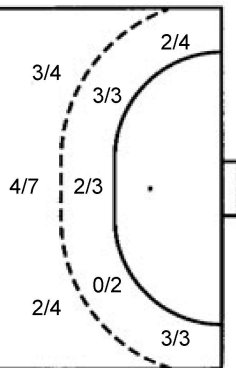
Shots by position

ATTACK



7m penalties	4/7
Fastbreak	1/1
Breakthrough	4/6
Long dist.	1/1

DEFENSE



7m penalties	3/3
Fastbreak	3/3
Breakthrough	9/9
Long dist.	0/0

Shooting statistics

Position	Goals	Sav.	Miss.	Post	Blk.	Total	%
Back (9m)	6	9	2	2	4	23	26
Line (6m)	4	1	0	0	0	5	80
Wing	3	2	0	1	0	6	50
7m penalties	4	2	1	0	0	7	57
Fastbreak	1	0	0	0	0	1	100
Breakthrough	4	1	1	0	0	6	67
Total	22	15	4	3	4	48	46

Jersey number Tot. Total shooting 6m 6m (line) shooting 9m 9m shooting Wng Wing shooting FB Fastbreak sh. 7m 7m penalty sh.
 Brk. Breakthrough sh. LD Long distance sh. As. Assists PC Pass clear chance E7 Earned 7m pen. TF Technical faults St. Steals
 2m 2m punishments C7. Committed 7m E2 Earned 2m pun. YC. Yellow cards R/B Red/Blue cards Blk. Blocks S Starting Line-up



Match Team Statistics

Match No.

CS HC Zalau 23 - 34 CSM Bucuresti
(11 - 16) (12 - 18)

25.2.2023. 11:00

Attendance:

Sala Sporturilor Gheorghe

Tadici

Referees: Anton Draganescu (ROU) / Silviu Radulescu (ROU)

CSM Bucuresti

#	Surname and name	S	Goals / shots								Attack				Def.			Penalties			TP						
			Tot.	%	9m	6m	Wing	7m	FB	Brk.	LD	As.	PC	E7	E2	TF	St.	C7	Blk	YC		2m	R	B			
2	MIHAI Mihaela Andreea	S	6/7	86		0/1	3/3	7m	3/3								1							2			59:16
3	ARNTZEN Emilie Hegh	S	0/3	0	0/2		0/1																				45:32
6	AUNE Malin Larsen																										3:03
7	GOGIRLA Alicia Maria		2/3	67	1/2			1/1				1											1				17:39
8	NEAGU Cristina Georgiana	S	6/8	75	3/5			2/2				4			1												28:48
9	ZAADI Grace		6/6	100	2/2	2/2																	1				18:29
10	STOICA Angela Stefania		4/4	100	2/2																				1		16:29
12	DAVIDSEN Marie	S																									35:46
15	KLIKOVAC Andrea		1/1	100		1/1						1															14:55
16	ERIKSSON Evelina Maria Louise																										20:46
17	OMOREGIE Elizabeth	S	3/4	75		0/1						1			2		2										21:34
21	DINDILIGAN Alexandra	S	2/3	67		1/1	1/2					2			1		1					1	1				43:59
28	DEMBELE PAVLOVIC Siraba		1/1	100			1/1																				18:12
49	AILINCAI Andreea		1/1	100		1/1								1		1								1			26:52
66	ALIVODIC Ema	S	0/1	0		0/1									1	1							1				34:45
99	ROTARU Dana Andreea		2/3	67	1/2											1											13:55
	Team / bench																										
	UKUPNO		34/45	76	9/15	5/8	5/7	3/3	3/3	9/9	0/0	9	0	2	1	9	0	4	3	1	6	0	0				

Goalkeepers		Saves / shots								
#	Surname and name	Tot.	%	9m	6m	Wing	7m	FB	Brk.	LD
12	DAVIDSEN Marie	9/23	39	7/12	0/3	1/3	1/4		0/1	
16	ERIKSSON Evelina Maria Louise	6/15	40	2/3	1/2	1/2	1/2	0/1	1/4	0/1
	TOTAL	15/38	39	9/15	1/5	2/5	2/6	0/1	1/5	0/1

Coach: Adrian Vasile

Number of attacks: 53, Efficiency: 64%, Average Duration: 29.30 seconds

Attack by type of defense

	Shots	9m	6m	Wing	TF	E7	E2
On def. 6-0	28/39	9/15	5/8	5/7	9	2	1
Fastbreak	3/3				0	0	0

Defense by type

	Total	9m	6m	Wing	Stl.	C7	2m
Def. 6-0	17/40	6/23	4/5	3/6	0	4	6
Fastbreak	1/1				0	0	0

Attack with superiority / minority / goalkeeper out

	Attack				Reaction		
	Att.	Eff.	Shots	TF	FB	LD	Tot.
6 on 6	40	63%	25/34	6			
5 on 6	6	50%	3/4	2			
6 on 5	4	100%	4/4	0			
5 on 5	3	67%	2/2	1			

Player superiority / GK out counted at the end of attack (in case it changes during attack)

Defense with superiority / minority / goalkeeper out

	Attack				Reaction		
	Att.	Eff.	Shots	TF	FB	LD	Tot.
6 on 6	37	38%	14/32	5			
6 on 5	9	78%	7/9	0			
5 on 6	3	33%	1/2	1			
5 on 5	1	100%	1/1	0			

Numbers show attacking numbers of opponent. Lower efficiency of opponent means better defense of this team

Jersey number Tot. Total shooting 6m 6m (line) shooting 9m 9m shooting Wng Wing shooting FB Fastbreak sh. 7m 7m penalty sh.
 Brk. Breakthrough sh. LD Long distance sh. As. Assists PC Pass clear chance E7 Earned 7m pen. TF Technical faults St. Steals
 2m 2m punishments C7. Committed 7m E2 Earned 2m pun. YC. Yellow cards R/B Red/Blue cards Blk. Blocks S Starting Line-up



Match Team Statistics

Match No.

CS HC Zalau 23 - 34 CSM Bucuresti

(11 - 16) (12 - 18)

25.2.2023. 11:00

Attendance:

Sala Sporturilor Gheorghe

Tadici

Referees: Anton Draganescu (ROU) / Silviu Radulescu (ROU)

Shot distribution by player

2 M. Mihai	3 E. Arntzen	6 M. Aune	7 A. Gogirla	8 C. Neagu	9 G. Zaadi	10 A. Stoica
3/4	0/1		0/1	0/1	2/2	1/1
1/1	0/1		1/1	2/2	2/2	1/1
1/1	0/1			2/2	2/2	1/1
1/1 lob				1 miss.		

15 A. Klikovac	17 E. Omoregie	21 A. Dindiligan	28 S. DembelePavlovic	49 A. Ailincai	66 E. Alivodic	99 D. Rotaru
	1/1		1/1			
1/1	1/1	1/1		1/1	0/1	2/2
	1/1	1/1				
	1 miss.	1 post				1 post

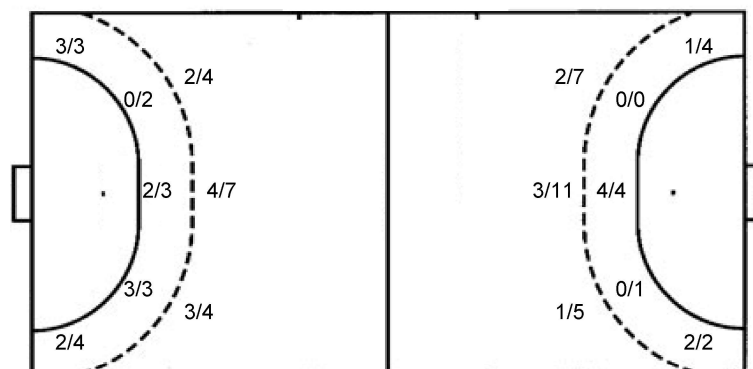
TOTAL

7/10	0/1	7/7
		1/1
10/11		8/10

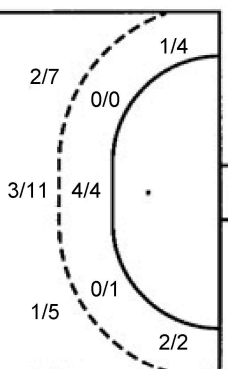
2 post 2 miss. 1/1 lob

Saves distribution goalkeepers

12 M. Davidsen	16 E. Eriksson	TOTAL
0/3	2/2	2/5
0/1	1/1	3/3
2/5	0/1	0/4
1/2	1/2	0/2
4/5	0/2	0/2
	1/2	3/7
	1/1	2/3
	0/3	4/8

Shots by position**ATTACK**

7m penalties	3/3
Fastbreak	3/3
Breakthrough	9/9
Long dist.	0/0

DEFENSE

7m penalties	4/7
Fastbreak	1/1
Breakthrough	4/6
Long dist.	1/1

Shooting statistics

Position	Goals	Sav.	Miss.	Post	Blk.	Total	%
Back (9m)	9	4	1	1	0	15	60
Line (6m)	5	2	1	0	0	8	63
Wing	5	1	0	1	0	7	71
7m penalties	3	0	0	0	0	3	100
Fastbreak	3	0	0	0	0	3	100
Breakthrough	9	0	0	0	0	9	100
Total	34	7	2	2	0	45	76

Jersey number Tot. Total shooting 6m 6m (line) shooting 9m 9m shooting Wng Wing shooting FB Fastbreak sh. 7m 7m penalty sh.
 Brk. Breakthrough sh. LD Long distance sh. As. Assists PC Pass clear chance E7 Earned 7m pen. TF Technical faults St. Steals
 2m 2m punishments C7. Committed 7m E2 Earned 2m pun. YC. Yellow cards R/B Red/Blue cards Blk. Blocks S Starting Line-up



Match Team Statistics

CS HC Zalau 23 - 34 CSM Bucuresti

25.2.2023. 11:00

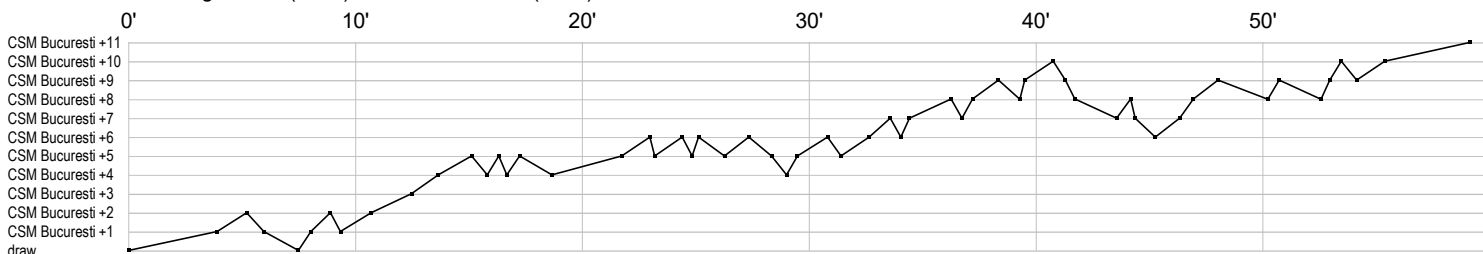
Match No.

(11 - 16) (12 - 18)

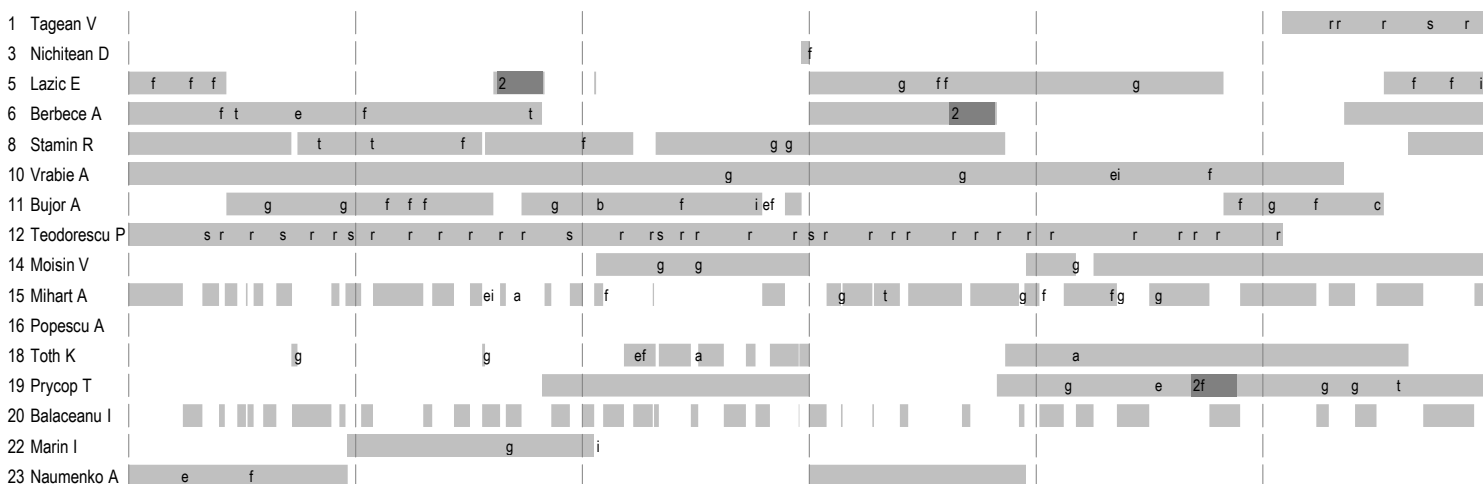
Attendance:

Sala Sporturilor Gheorghe
Tadici

Referees: Anton Draganescu (ROU) / Silviu Radulescu (ROU)



CS HC Zalau



CSM Bucuresti



In game	g Goal scored	f Missed shot	a Assist	t Technical faults	b Steal
2 2min suspension	e Earned 7m	c Committed 7m	y Yellow card	r Red Card	k Blue card
i Earned 2min.	x Block	4 4min suspension	p Pass for clear chance	s Saved shot	r Received goal