



CALIFORNIA STATE UNIVERSITY
FULLERTON[™]

Health Center Facility Fee

Student Fee Advisory Committee Presentation

Mary Becerra, Ed.D., MPH

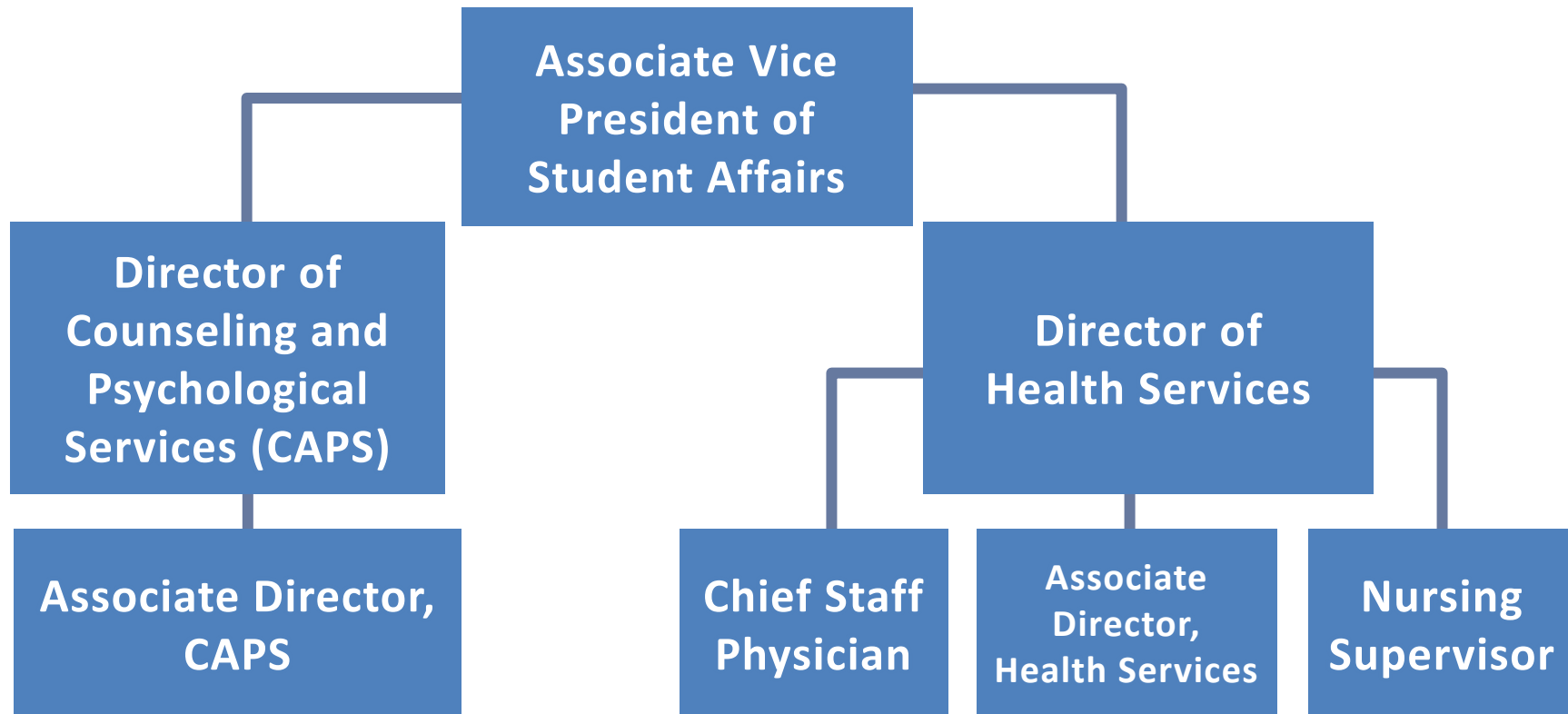
Director, Health Services

February 28, 2020

Overview

- Governance
- History
- Purpose
- Revenues and Expenditures
- Questions

Governance – Student Wellness Management Team



Governance

- CSU Executive Order 943
- AAAHC (Accreditation Association of Ambulatory Health Care)
- SHAC (Student Health Advisory Committee)
 - *Students, Faculty, Staff*
- Management Team
 - *Associate Vice President, Wellness and Care Services*
 - *Director, Health Services*
 - *Associate Director, Administrative and Prevention Services*
 - *Director, Counseling and Psychological Services*
 - *Associate Director, CAPS*
 - *Chief Staff Physician, Health Services*
 - *Nursing Supervisor, Health Services*

History

- Started Early **1970s** to pay for new building
- Cost \$1.75 Million
- \$3 per semester/\$6 per academic year
- Has never increased
- The development and operation of health center facilities, on CSU campuses, has been authorized as a self-supporting program.
- Education Code statutory authority permits the trustees to establish a mandatory facility fee for the construction and maintenance of health center facilities.
- The statutes in the CSUBond Act of **1947** permit the Board of Trustees to use an established mandatory health center facility fee as a revenue source to repay bonds issued by the Trustees in order to fund the construction of health center facilities on CSU campuses.



Purpose

- Facilities maintenance
- IT and infrastructure costs
- Building upgrades
- Repairs
- Equipment



2018 -2019 System-wide Health Facilities Fee

Monterey Bay	\$0	Long Beach	\$10
Bakersfield	\$6	San Luis Obispo	\$10
Channel Islands	\$6	Maritime	\$14
Chico	\$6	Stanislaus	\$22
Dominguez Hills	\$6	San Bernardino	\$27
East Bay	\$6	Humboldt	\$36
Fresno	\$6	Sonoma	\$38
Los Angeles	\$6	San Marcos	\$40
Northridge	\$6	Sacramento	\$46
Pomona	\$6	San Diego	\$50
San Francisco	\$6	San José	\$68
Fullerton	\$6.32		

Average: \$16

CSUF fee is about \$12 less than the average.

Revenue and Expenses 2018-2019

• Revenue	
– Summer 2018	\$ 25,051.07
– Fall 2018	\$124,740.40
– Spring 2019	\$122,565.99
Total Revenue	\$272,087.46
• Expenses	
– State Pro Rata	\$ 14,958.00
– Chancellor’s Office	\$ 30,743.00
– Other Expenses	\$113,261.74
Total Expenses	\$158,962.74

Upcoming Projects (2018-2023)

Project	Est. Expense
Sprinkler System Installation	\$700,000 (completed 2020)
Laboratory Renovation	\$150,000 (scheduled 2020)
Pharmacy HVAC system	\$75,000 (in progress)
Office Renovations (LH, SHCC-W)	\$100,000 (in progress)
Immunization Compliance	\$50,000 (in progress)
Conference Room Renovation	\$50,000 (scheduled 2020)
Flooring Restoration	\$400,000 (est. 2022)

Questions