

# COOROORA CREEK PARK

## POMONA

A HISTORY: Early 1900s to 2012



Dianne Kelly

August 2012



*Never doubt that a small group of thoughtful committed citizens can change the world; indeed, it's the only thing that ever has.*

Margaret Mead



Cooroora Creek Park is much loved by the community.

This report is a community project.

We hope the community will continue to enjoy Cooroora Creek Park  
and care for it into the future.

---

**ACKNOWLEDGEMENTS:**

*Noosa District Landcare  
Group:*

*Phillip Moran*

*Anita Russell*

*Gemma Wright*

*Noosa Museum and  
Cooloola District Historical  
Society:*

*Jeanette Alfreson*

*Alison Napier*

*Sunshine Coast Council:*

*Col Leavey*

*Raul Wychardt*

*Narelle Reid*

*Sue Lowrie*

*Michael Lyons*

*Former Noosa Shire  
Councillors:*

*Peter Hansen*

*Doug Bettens*

*Noel Playford*

*Alan Page*

*Copyright Dianne Kelly.  
Please seek permission for  
reprinting or reproduction  
or any other uses apart from  
reference.*

---

**Queensland Blue Gum (*Eucalyptus tereticornis*),  
Paperbarks (*Melaleuca quinquenervia*), and exercise  
equipment along the pathway**



**Exotic pine trees, (*Pinus radiata*), green grass and the  
pathway**



**COOROORA CREEK PARK – A BEAUTIFUL PLACE TO BE.**

**Black Bean (*Castanospermum australe*) in November**



**Brown Bolly Gum (*Litsea leefeana*)**



---

***CONTENTS:***

*Introduction p 5*

*Timeline p 6*

*Summary p 35*

*Limitations p 36*

*Recommendations p 37*

*List of Appendices p 38*

*References p 39*

*Appendices 1 -14 pp 40- 56*

*Additional maps showing  
Mary Valley Catchment  
with Biodiversity and  
Zoning Overlays 40-41*

*Noosa Trail Network Map  
p42*

---



## INTRODUCTION

Cooroora Creek Park is a green oasis of tranquillity and beauty in the midst of the town of Pomona. Sweeps of green mown turf, clumps of tall trees and riparian vegetation accompany winding pathways that surprise and intrigue the viewer. The brownish-milky, sometimes khaki-coloured, Cooroora Creek serpentine its way through the park, accompanied by an assortment of watery channels or basins, curving, circular or pond-like, receiving whatever water drains from higher ground or from gushing floods in heavy rain. The creek and reservoirs are sometimes still, dark and dense, and the water basins may be empty and dry when the rain does not come.

Several streams, springs and storm-drains feed into Cooroora Creek from the southern and western town side. Cooroora Creek itself arises in Yurol Forest and joins Six Mile Creek on the northern side of Louis Bazzo Drive forming part of the Mary River system (Appendices 13 and 14). Sub-tropical rainforest plants and planted natives, both local and from other parts of Queensland, thrive here. They are often pruned and shaped by storms, and floods tear away at plants and debris in their way. Nevertheless our park is maintained carefully by the Sunshine Coast Council, Noosa and District Landcare Group, local residents and others who appreciate and take care to maintain its beauty and integrity.

Some of the birds that make the park their home include scrub wrens, noisy pittas, gerygones, honeyeaters, whip-birds, cat-birds, brush-turkeys, willy wagtails, peewees, lorikeets, rosellas, noisy miners, visiting water birds such as little black cormorants, white faced heron and ducks (my own observation). Tree frogs, tusked, giant barred, striped marsh, eastern sedge frogs have all been reported to inhabit the park, and native fish and turtles, plus a myriad of insects, contribute to its ecology (Mary River Catchment Coordinating Committee Frog Monitoring Records 2009-10).

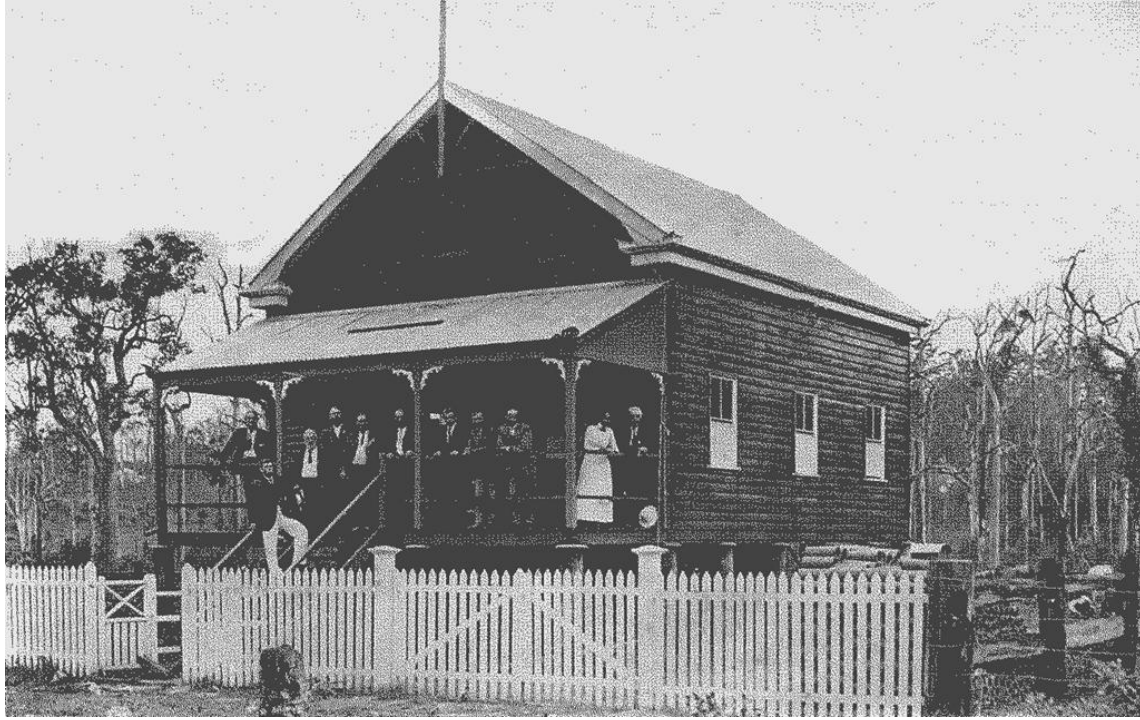
How did all this come about? When was the park first developed? Who was responsible? How much change has occurred to the original landform and vegetation? These are some of the questions which spiked my curiosity as I walked, explored and photographed the park and regularly tested the creek water as a Waterwatch volunteer. Waterwatch is administered by Noosa and District Landcare Group.

In my search I found that many people and organisations had been involved in the creation of Cooroora Creek Park since the mid-1980s. It now consists of four separate land parcels with a total area of 9.72 hectares. The following timeline of significant events and developments, along with a range of maps, photographs and plans will all contribute to an understanding and appreciation of our beautiful park. There may be others who can contribute to on-going recollections and further development of this history.

## TIMELINE

1910

**Photo 1:** 'Noosa Shire Office, 35 Factory Street' showing part of the vegetated area in the background which forms part of the current Cooroora Creek Park.

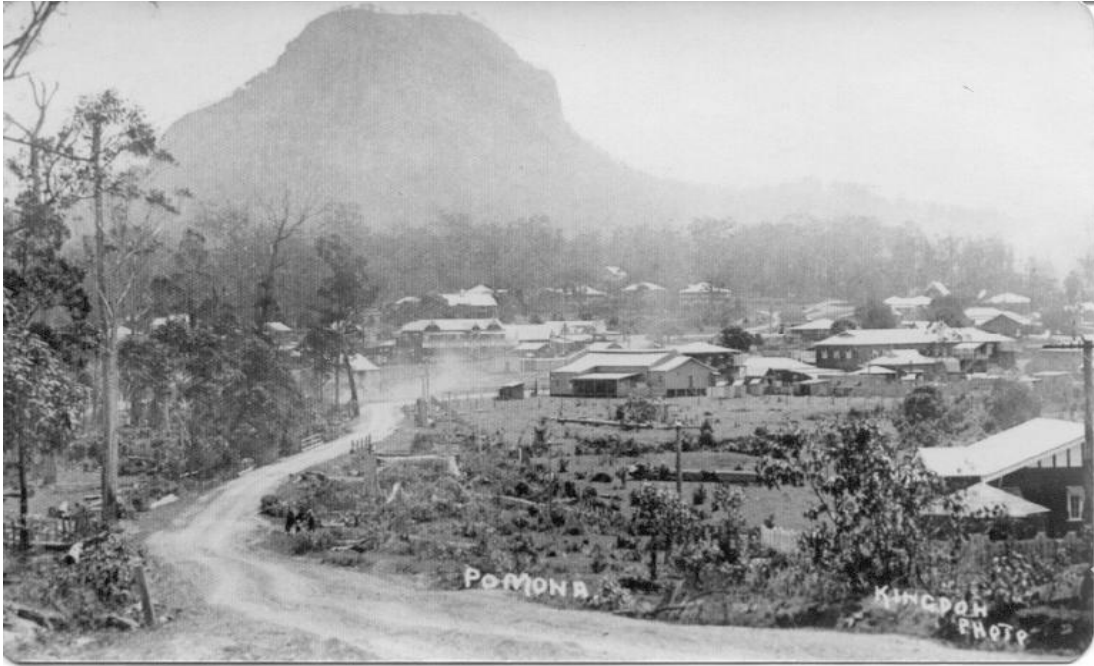


**Photo 2 (undated):** 'Pomona Railway Station' (foreground), Railway Hotel, Factory Street (mid-ground) with background of trees in the area of the current Cooroora Creek Park. Timber getting and sawmilling was an early industry and these trees most likely were harvested.



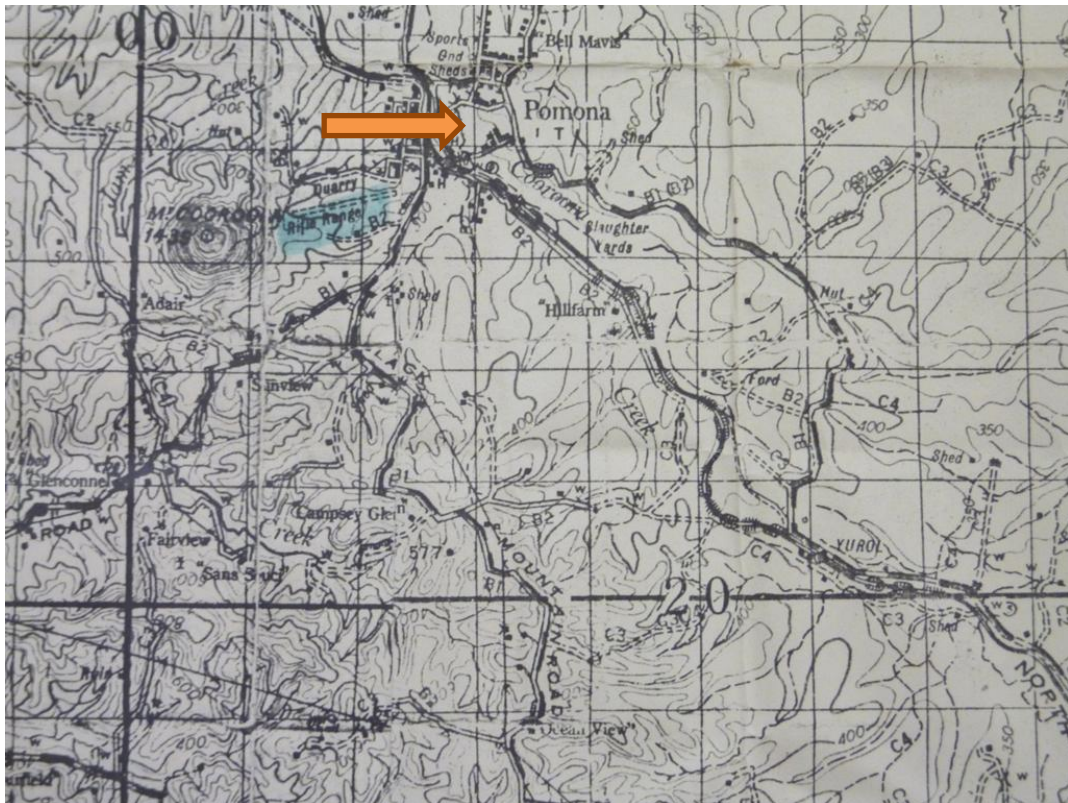


**Photo 3 (undated):** “Pomona from Hill Street” showing vacant land in the foreground of the Majestic Theatre (mid-ground) which would now be part of the current Cooroora Creek Park



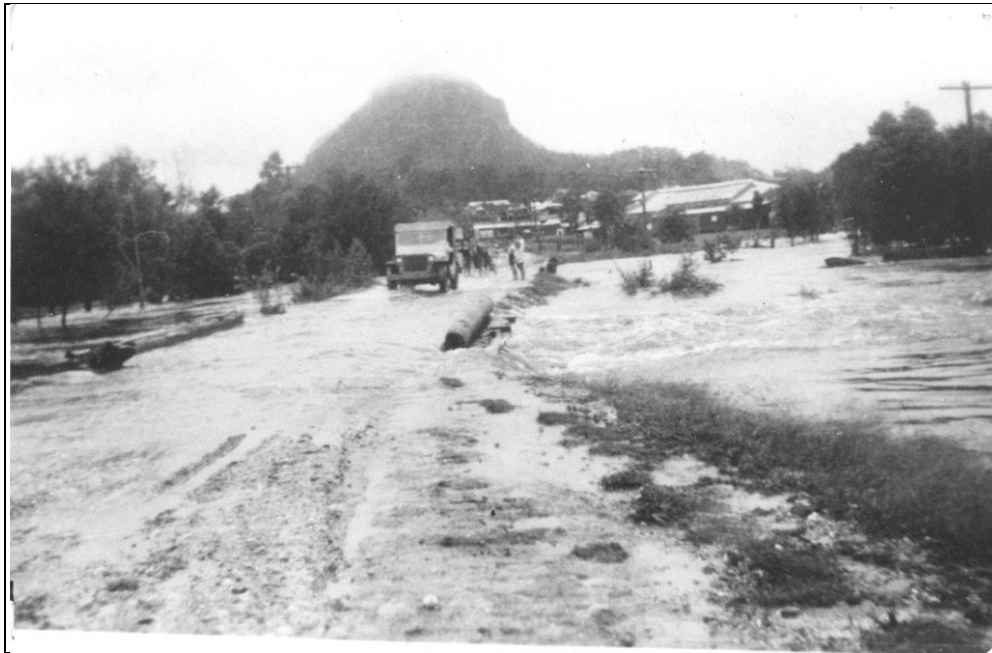
1942

**Map 1:** part of Cooroy Military Map showing Pomona and vacant area adjacent to Hill Street



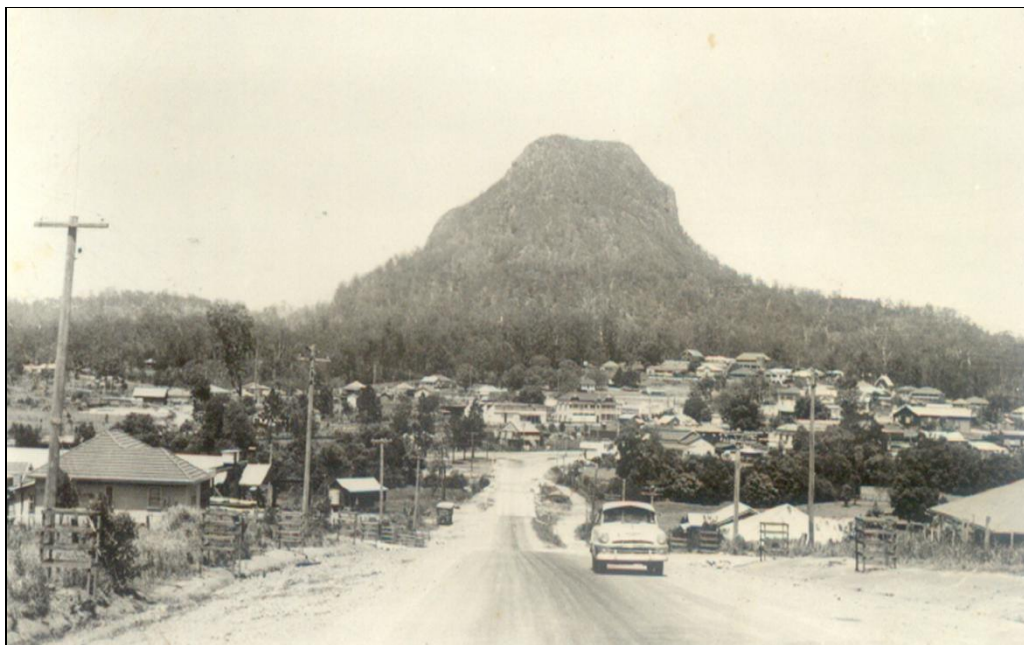
**1946/7** Appendix 1: Record of Land Survey by JS Allan, Surveyor, known as Lot 37 on Registered Plan 63022, County of March, Parish of Tuchekeoi.

**Photo 4 (undated):** 'Flood after WW2' appears to show Hill Street Bridge and Cooroora Creek in flood



**1957**

**Photo 5:** Pomona looking west down unsealed Hill Street showing the bridge across Cooroora Creek and on the right vegetation of trees with an open grassed area where the Park would be.

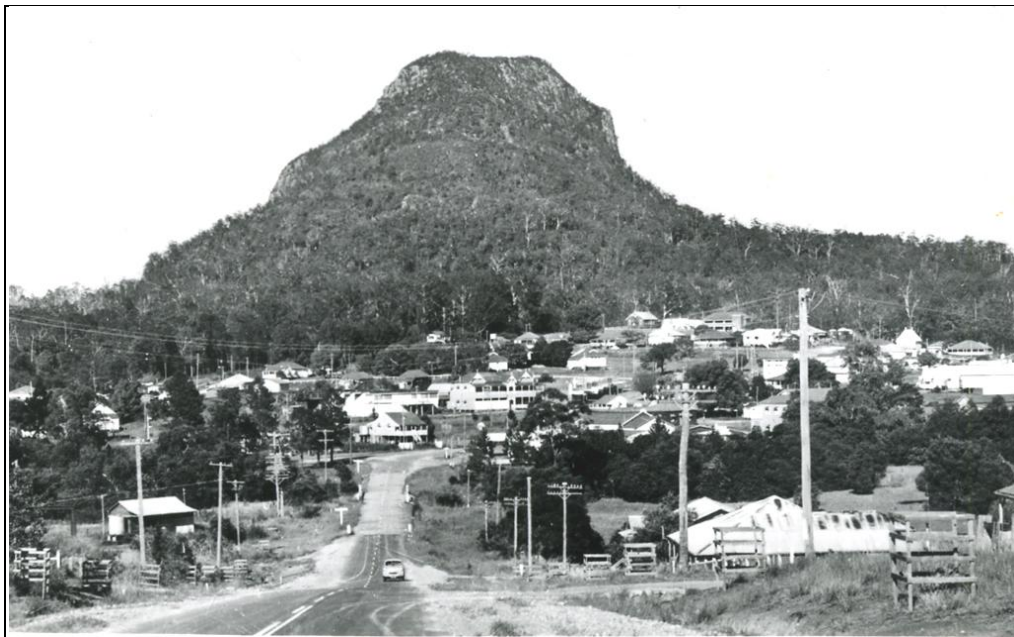


1962

**Map 2:** The Town of Pomona, Gympie Land Agents District, Department of Public Lands, Brisbane. The course of the creek is shown as well as a waterway on the eastern border of Lot 37



**Photo 6 (undated):** 'Pomona Postcard' looking down sealed Hill Street showing the bridge across Cooroora Creek and vegetation of trees with an open grassed area, the site of the current Park



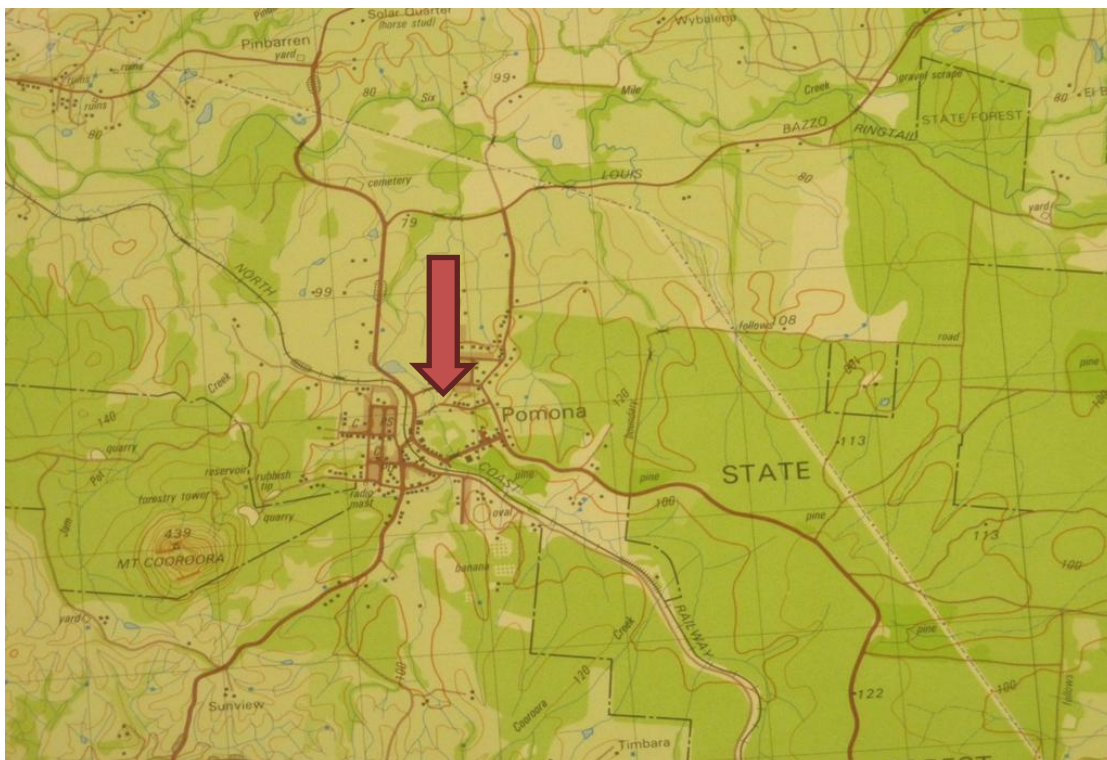
**1970** Appendix 2: Certificate of Title for Lot 37 of 18 acres 0 rood 10 perches: it was under private ownership but remained undeveloped.

*The riparian area along Cooroora Creek and bounded by Hill and Mill Streets and bounded by the rear of the blocks of land on Factory Street and the lower blocks off Hill and Mill Streets, was subject to flooding. It was overgrown and neglected by an absent owner. Some local residents used it as a continuation of their backyards and as a dumping area for old car bodies and rubbish. One resident living in Factory Street strung barbed wire from tree to tree to fence his cattle, and had chickens which often roamed onto the road and encountered the risks associated with that. There were naturally occurring 'melon holes' where fallen trees had left depressions in the ground. It was largely open ground with few trees. Noel Playford said that it was an area that "you wouldn't venture into as a kid".*

**1974** Appendix 3: Map of the Town of Pomona, Gympie Land Agents District, Department of Public Lands, Brisbane.

**1980**

Map 3: Pomona Section, Cooroy, Australian Topographic Survey. Cooroora Creek and streams that feed into it can be seen on close examination



**1981** Appendix 4: Map of Pomona Section, Sunmap, Department of Mapping and Survey, Brisbane.

**1986** Appendix 5: Map of Pomona Section, Cooroy, Department of Forestry, 4<sup>th</sup> Edition.

**1986:**

**Noosa Shire Council:** *At the time the Council held an area of 1.9% as public land in Pomona. The requirement for public land area within local government areas was 8-9%. Pomona was under-allotted for public area land and local councillor Peter Hansen as a member of the Town Planning Committee sought to increase the amount of public land in Pomona.*

**1987** Planning to acquire public recreation land specifically Lot 37.

**1988** According to one source the purchase of the land took place for flood mitigation and for park purposes for about \$26,000 (Unable to verify this from Noosa Council File).

Another source thought that the land was acquired as a result of non-payment of council rates by the absent elderly owner and that the owner agreed to give the land to Council in lieu of paying back rates. Evidence supporting resumption of the land is in Appendix 7 and 7a – Application for Resumption of Land.

The Land Title was held by the Council of the Shire of Noosa for Lot 37, an area of 7.3096 hectares dated 14 April 1988.

Land acquisition also included Lot 2 Registered Plan 122335 of 4 acres 1 rood 38.1 perches. It is not clear who had previously owned this land. The total area was 22 acres, 1 rood, 48.1 perches, which is 9.12 hectares.

Cooroora Creek Park was gazetted as a Park on 16 April 1988

See Appendices 6, 7, 7a and 8.

**1989** Noosa Shire Council Maintenance Crew at Pomona Depot mowed the open areas and carried out initial clearing. Later the Noosa Council and Sunshine Coast Council Parks and Gardens Department subcontracted the rehabilitation and weed control to Noosa & District Landcare Group (NDLG).

**1993** Noosa Shire Council The overall development of Cooroora Creek Park was recorded in the Noosa Shire Council Draft Recreation and Leisure Strategy. It was envisaged that an adventure playground, bike and play facilities and a multi-purpose oval, a car park off Mill Street and entertainment facilities would be part of the public area. (Appendix 9 Drawing 1) Most of the areas remained undeveloped.

**Noosa Shire Council:** The first stage was the proposed new 2 metre wide bike/pathway to be carried out by 3 workers under Bob Bickley, Parks Curator, through the **Jobskills Scheme**. Funds for materials were derived from the 1992/93 Budget, Park Improvements Capital Works Division 1 for \$25,000. Materials including tools, concrete, plants, woodchip, road gravel and garden edging boards were purchased.

Col Leavey of Pomona Depot recalls his crew set to cleaning up the area of barbed wire which had been strung from tree to tree by Les Andreassen to fence his cattle (the scars are still visible especially on the pine trees). Mill and Hill Street boundaries were fenced. The car park off Hill Street, 1.4 km of concrete pathways, two water-supply lines and drain crossings were constructed. The council bridge crew was brought in to build the wooden walk bridges. The wooden bridge on the path from Hill Street was constructed with the help of Jobskills workers. Distance markers along the main path were placed every 50 meters (to 870meters).

The commencement of the involvement of Noosa District Landcare Group (NDLG) in the development of Cooroora Creek Park initially with the LEAP program occurred about the same time.

[Photos 7 – 10: The LEAP Team involved in the construction of pathways in 1993](#)





**1995** With the initiation of local councillors, authorisation was given by Noosa Shire Council to enter into a legal agreement for the transfer of land with Page Furnishers Pty Ltd in order to pursue the extension of Cooroora Creek Park from Mill Street to Exhibition Street and to adjoin the Showground off Exhibition Street. A formal document, the 'Deed', was drawn up. The 'Deed' laid out the plan to exchange the lands within 12 months and was signed 30 May 1997. Stamp Duties were paid on 25 February 1998. In July 1998 an extension to complete the exchange by 30 November 1998 was made. Council Minutes of 16 December 1999 recorded a recommendation to shorten the rezoning process and a note on it was "Application for Development sent to Alan Page for signing on 28.1.2000". No further activity is recorded.

**1996** NDLG : The on-going Landcare contribution included organising school groups to participate in environmental education and tree-planting.

Photo 11: Range to Coast Project, 1996-98 School Group 1



*Riparian weeds have been progressively removed over many years. Since 1996, under the guidance of NDLG, school groups, community groups and volunteers from around the region have been involved each year in water quality monitoring, macro invertebrate workshops, native plant workshops, and creek revegetation. This work not only beautifies the park but also increases stream bank resilience, reduces erosion and encourages a healthy creek and wildlife playground (Gemma Wright, Phillip Moran).*

Photo 12: Range to Coast Project, 1996-98 School Group 2





**Photo 13:** Range to Coast Project, 1996-98 School Group 2a



**1997** Noosa Shire Council planned to further upgrade Cooroora Creek Park by extending the lagoon on Mill Street side of the park and to revegetate the area. Council requested NDLG to provide appropriate trees in June (Cooroora Creek Park File).

**1997-98** Noosa Shire Council: The formalities for the exchange of land with Page Furnishers Pty Ltd, 31 Factory Street, Pomona were carried out.

*A portion of Noosa Council land (1,320 m<sup>2</sup> of Lot 37) was to be transferred to Page Furnishers and rezoned from Open Space to Village Industry. Page Furnishers negotiated further extension of the boundaries in exchange for Lot 1 and 2 that was to be transferred to Council. An area of 17, 000 m<sup>2</sup> of creek side land to the north would allow for extensions to Cooroora Creek Park. The total land area of the park would be 9.72053 hectares (Noosa Council file).*

Appendix 9: Cooroora Creek Development Plan 1993

Appendix 10: Proposed land exchange between Page Furnishers P/L and Noosa Shire Council 1998

The Surveyors engaged in surveying the land advised that new Survey Plans to be signed sealed and lodged at Titles Office to obtain new Titles (Cooroora Creek Park File).



The disjunction between the planned changes of boundaries and some current maps led to further inquiry. Alan Page of Pages Furnishers said that the exchange did not go ahead. He still has the paperwork and would be keen to go ahead with the exchange if SCRC were willing to re-engage in the process. He said that he was using the land (“squatting” was his term) at the rear of the factory on the corner of Factory and Mill Streets.

## 1999

*Noosa Shire Museum: The Museum along with Cooroora Historical Society and with the support of Noosa Council were awarded funding under Local Symbols of Reconciliation – and thus the Living in Harmony Project was developed “to research and record local histories and cultures through a symbol of reconciliation”. Council set aside an area in Cooroora Creek Park for the positioning the symbolic construction. The Museum, in part one of the project, was nominated as a repository to be the permanent safekeeping place for Gubbi Gubbi artefacts and as a local display.*

[Photo 15: Planting Project in preparation for the Sydney Summer Olympics](#)



**2000** Preparations for Centenary of Federation celebrations occurred during March, April and September with school group plantings and horticulture trainees participating.

Photo 16: School students helping with planting



Photo 17: Horticulture trainees (NDLG) preparation for mulching new plantings



Cooroora Historical Society: A request was made for Council assistance with the construction of the concrete pathway from the Museum to the site of the Symbol for Reconciliation (The Speaking Circle) as part 2 of the Reconciliation Project. It was also planned that native plant species specifically gathered and used by indigenous people in the past be planted along the pathway. Phillip Moran (NDLG) was to consult on sourcing and planting of the agreed species.

**2001** Noosa Council: Construction of two bridges including one over 'the island' in Cooroora Creek Park and the path from the Museum through the park to meet up with the bridge over to the island was completed. It was planned that participants from the Tewantin Community Jobs Plan would assist in the construction.

NDLG: April and May – Exotic pine trees were cleared from the Park adjacent to Hill Street and the area was revegetated by volunteers and horticultural trainees.

The Park has been a training ground for the 48 horticultural traineeships NDLG have managed since 2001 and as such has received many thousands of hours of volunteer labour. (Gemma Wright, Phillip Moran, NDLG, 2012).

**Photo 18: Clearing exotic pine trees**



**Photo 19:** The Park area after clearing



*Preparation and development of the Speaking Circle and Reconciliation Stone on the island in Cooroora Creek Park was carried out. The Aboriginal speaking circle was constructed by John Langfeldt and Phillip Moran, with help from horticultural trainees in May 2001. The area was removed of weeds by NDLG, the rocks were placed by John Langfeldt and then crow-barred into place. The gravel was wheel-barrowed in and compacted by NDLG.*

**Photo 20:** Construction of the Speaking Circle



Photo 21: Horticulture trainees helped with the construction



Photo 22: The Speaking Circle and Reconciliation Stone



## 2003

Bushcare Group Since 2003, NDLG have managed the Community Nature Conservation Program [CNCP] within the Noosa Biosphere with assistance from Sunshine Coast Council. Cooroora Creek Park hosts one of 14 such active 'volunteer bushcare groups' across this region and they meet to undertake weeding and revegetation in the park every third weekend.

**2005** Development of the Noosa Trail Network with Trail 5 and later 7 and 8 crossing through the Park.

**2007**

[Photo 23: Flooded Mill Street looking towards Pages Furnishers in Factory Street](#)



**2008** Noosa Council amalgamation to Sunshine Coast Regional Council.

**2010**

[Photo 24: Cooroora Creek in flood, December](#)





**Photo 25:** Hill Street Car Park flooded December 2010



**Photo 26:** Hill Street Road Bridge December 2010



**2011** The Noosa Plan, Mary River Catchment Locality Plan.

*Over the years, NDLG has attracted funds from a variety of sources to continue the strategic environmental work at Cooroora Creek Park. Businesses such as: BHP Steel, Energex, Landcare Queensland, World Wildlife Fund, Burnett Mary Regional Group, Mary River Catchment Coordinating Committee, the Noosa and Sunshine Coast Councils, the Federal Government and the State Government.*

## Cooroora Creek Park Bushcare

The Cooroora Creek Park Bushcare group began in February 2011 with a community event, organised by NDLG and the local community. Approximately 20 community members attended the first community Bushcare day at Cooroora Creek Park.

The day's activities included the planting of one hundred trees, an investigation of the water bugs by Waterwatch coordinator, and workshop speakers from Wildlife Volunteers Association (WILVOs), Kin Kin Native Bees, and Mary River Catchment Coordinating Committee (MRCCC).



The quality of the water in the creek has been questioned due to its colouration. Using Waterwatch methodology, a volunteer monitors the health of the creek every month. Local frog expert, Eva Ford from MRCCC dispelled the myth of dirty looking water. Eva has been conducting frog surveys in Cooroora Park and amazed volunteers not only with her ability to mimic the frog calls, but also with her research results for number and diversity of frogs found in the park.



Roslyn from WILVOs introduced volunteers to possum “drays” – a kind of nest that ringtail possums build and then live in. Roslyn also impressed upon the community, the importance of not feeding native birds, especially with the spread of the fatal beak and feather disease. Feeding birds causes different species to mix and congregate in unnatural numbers.



Chris Fuller from Kin Kin Native Bees gave the community a peek

into the world of native bees. Attendees discovered that some are stingless and are crucial to native flora and, ultimately, fauna survival. Native bee honey is a rare delicacy, which Indigenous Australians gifted or traded. It is still eaten today by those people fortunate enough to have a hive, or can afford the rich liquid gold.

Since February 2011, support for a Bushcare group at Cooroora Creek Park grew significantly. Shortly after the community day, a group was formed and recognised by the Sunshine Coast Council (SCC) in the Community Nature Conservation Program (CNCP). The group now has ongoing financial and technical support from SCC and NDLG as part of the CNCP, and its members enjoy opportunities to attend numerous environmental workshops and events. As of September 2012, the group has 16 members and holds working bees on the third Sunday of each month.

**2012** More intense flooding occurred and left behind debris from outside the Park as well as flushing the waterways and surrounding system and leaving behind damage to the bridges, trees, railings and signage.

[Photo 27: Debris left high and dry in the branches, 2012](#)



**Photo 28:** Heavy debris carried by floods and jammed between trees 2012



**Map 5:** Cooroora Creek Park showing contour (SCC Website MyMaps 2012)



The light green areas show lower contour levels, the areas of permanent streams or where water drains after heavy rain. The mid green area is slightly elevated and is largely grassed.

**Photo 29:** Cooroora Creek from the second footbridge, October 1010 after prolonged rainfall



The start to 2012 was one of the wettest years on record and some working bees were postponed. The Park experienced heavy flooding but has recovered showing resilience. Debris and building materials from the timber yard across Hill Street were strewn through the park. The Green Army participants helped to salvage lengths of timber that had drifted from the local timber yard to Cooroora Park and removed debris that had littered roads and park areas.

**Photo 30:** The Green Army team cleared timber deposited in the park during floods



During 2012 the Cooroora Creek Park Bushcare group removed large quantities of weeds. The main offenders have been Singapore Daisy (*Spagneticola trilobata*), Siratro (*Macroptilium atropurpureum*) and Corky Passion Vine (*Passiflora suberosa*).

In April Bushcarers worked to weed and plant along the drain beside Hill Street drain above the carpark.

[Photos 31-34](#): Eighty plants were planted along the drain in Hill Street



In May, the creek on the eastern boundary was given attention that it had never seen the likes of before. The area had weeds of all sorts encroaching, and the creek was in need of some native revegetation. Weeds were removed and Lomandra were planted along the banks.

**Photos 35-38: Fifty plants were planted along the eastern boundary of the park**



In June the group moved to the ponds on the western side of the park. The banks of the waterway were inspected for weeds. Fortunately, there weren't too many. Plants were used to assist in stabilising the banks and outcompeting weeds.

**Photos 39-42: 50 plants were planted beside the pond**





From July to August four community plantings took place near the Mill Street end of Cooroora Creek Park.

**Table 1. July/August Mill Street Plantings**

Planting	No. of Attendees	No. of Plants
1. Homeschool National Tree Day planting and Waterwatch	30	100
2. Pomona Early Childhood Center NDLG Planting	35	100
3. BMRG grant Community and Bushcare Planting	14	250
4. Bushcare CNCP Planting	6	150
	<b>Total</b>	<b>600</b>

1. Homeschool National Tree Day planting and Waterwatch

**Photos 43-50: Children investigating the water bugs and planting trees**







## 2. Pomona Early Childhood Centre NDLG Planting


[Photos 51-54: Preschoolers planting trees in the park](#)






3. BMRG weed removal grant, community and Bushcare planting

**Riparian Restoration  
Working Bee  
Pomona Show Grounds**



**Thursday 20th September, 2012  
8.00 — 10.30 am**

Morning Tea, gloves and tools are provided. Meet at the tennis courts.

<p>Help <b>restore</b> the riparian vegetation of the Pomona show grounds, by removing declared <b>class 3 weeds</b>.</p>	 <p>Protect the habitat for the endangered giant barred frog, Platypus, endangered Mary River Cod, frogs &amp; turtles.</p>	<p>For more information: Anita Noosa &amp; District Landcare (07) 5485 2155 <a href="mailto:waterwatch@noosalandcare.org">waterwatch@noosalandcare.org</a></p>
---	--	--



Photos 55-60: 250 plants were planted along the Cooroora Creek





5. Bushcare CNCP Planting

Photos 61-64: 150 plants were planted on the northern side of the park





Cooroora Creek Park was part of the Six Mile Creek Conservation project carried out by NDLG in a project funded by a Burnett Mary Regional Group (BMRG) Weeds and Pests grant to remove Class 3 weeds from Six Mile Creek and its tributaries. As a tributary, the Cooroora Creek area received attention with the removal of Cats Claw Creeper (*Macfadyena unguis-cati*) and Camphor Laurel (*Cinnamomum camphora*).

Works that directly contributed to conservation to Cooroora Creek include Class 3 weed removal at:

**Table2: Source: NDLG application for BMRG Weeds & Pests Grant – Improving the regions biodiversity 2012**

Property Name		
Lot on Plan	3 RP 350 77 Exhibition St	Council Reserve Riparian zone, CNR Pound Rd, Factory St,
Lot on Plan	2 MCH 2540	Pages Furnishes, CNR Pound Rd, Factory St, Exhibition St
Lot on Plan	37 RP 63022 14 RP 35080 2 RP 122335 1 RP 52 52660	Council Parks Reserve, Cooroora Creek Park
Lot on Plan	512 MCH 886	Council Transfer Station, Louis Bazzo Dr

Six Camphor Laurel trees were removed from the Mill Street community planting area and used to mulch natives that were planted there.

The Cooroora Creek Park group continues to work closely with park stakeholders and managers from NDLG, SCC and the community.

## SUMMARY

Cooroora Creek Park is a major park for Pomona's 2,587 population (2011 Census). It is enjoyed by many people as a site for family picnics, for walkers, runners and exercisers of all ages, for meeting up with friends, as a cycle-way and shortcut to the town, for dog training, exercising and socialising, for education about our local ecology, as a site of community action and voluntary work in improving the environment and as a part of the Noosa Trail Network. It is part of the formal acknowledgement of the indigenous people's presence in the area.

From the early photos it appeared that the area was forested, but with timber saw-milling as a local industry and strong demand for timber it was soon cleared of original vegetation. With regular flooding of the creek, the area was probably not sought after for development. However with foresight and a sense of community responsibility, local Shire Councilors saw the opportunity to claim the area as public land and gradually it was improved with paths, clearing and revegetation. Restoration of the riparian area further improved our accessibility to a valuable natural and beautiful community resource.

Care for the park is on-going with the participation of Sunshine Coast Council Parks and Environment Department with planning and maintenance, and Noosa District Landcare Group with environmental planning, management, liaison, educational activities and voluntary groups. The Noosa District Museum and Cooroora Historical Society have an on-going link with the Park. Community members who love, value and care for the Park are the beneficiaries of a wonderful legacy.

[Photo 65: Creek Sandpaper Fig \(\*Ficus coronata\*\)](#)



## LIMITATIONS

I had some great help and encouragement from the people mentioned in Acknowledgements (page 1). However it was difficult to access information on the Park especially since amalgamation of Noosa Shire Council with Sunshine Coast Council. There was no information in the Cooroora Creek Park File held at the Noosa Offices after 2001.

Some of the documents in the Appendices did not convert well from and to different programs. I have included them as evidence. However copies may be obtained from me or the Department of Environment and Resource Management.

The differences in boundaries between Mill and Exhibition Streets and beyond shown in the Zoning Amendments, Strategic Planners Report, 1999 and the current boundaries shown on MyMaps Website hosted by Sunshine Coast Council (accessed 26 July 2012) were difficult to explain until discovering that the land exchange did not go ahead. There may be an opportunity to re-commence this process.

This history encompasses historical, developmental, environmental and aesthetic perspectives and does not attempt to be a comprehensive account in any of these areas.

[Photo 66: Umbrella Cheese Tree \(\*Glochidion sumatranum\*\)](#)



## RECOMMENDATIONS

1. Comments from locals about the unobtrusive nature of the Park such as “You wouldn’t know it was there” or visitors saying “I didn’t know it was there” lead me to think that signage for the park could be improved.
  - Signage at the Hill Street and Mill Street entrances
  - Directions to access the Park: signage at Noosa Museum, Factory Street and Memorial Avenue
  - Map of the Park at the car park showing access, paths, waterway, foot-bridges and significant features
2. A suggestion has already been made to NDLG to apply for funding for identification plaques for significant trees. This would add to the Park as a resource for learning about the environment.
3. The plan in 2000 for native plant species specifically gathered and used by indigenous people in the past be planted along the pathway from Museum to Speaking Circle has yet to occur. This would enhance the current pathway and link the two projects.
4. Explore the feasibility of recommencing the exchange of land between SCRC and Pages Furnishers as had been agreed in 1998. Tony Wellington, the Council representative for this area and also on the Environment Committee of SCRC could be approached.
5. Art Project – explore the possibility of exhibiting new art works with the park as a theme – at the Pomona Railway Gallery. Categories such as botanical drawings, line drawings and photography would be appropriate.
6. NDLG representative Gemma Wright would like to pursue an educational project which includes a poster and an information brochure which could be readily distributed. This History of Cooroora Creek Park may be of benefit in her project.

## **LIST of APPENDICES**

Appendix 1: Record of Land Survey by JS Allan, Surveyor, known as Lot 37 on Registered Plan 63022, County of March, Parish of Tuckekoi, 1946/47.

Appendix 2: Certificate of Title for Lot 37 of 18 acres 0 rood 10 perches, 1970

Appendix 3: Map of the Town of Pomona, Gympie Land Agents District, Department of Public Lands, Brisbane. 1974

Appendix 4: Map of Pomona Section, Sunmap, Department of Mapping and Survey, Brisbane. 1981

Appendix 5: Map of Pomona Section, Cooroy, Department of Forestry, Edition 4. 1986

Appendix 6: Certificate of Title, 1988

Appendix 7: Noosa Shire Council Resumption Request, 1988

Appendix 8: Certification and Gazetting Notice 1988

Appendix 9: Cooroora Creek Development Plan 1993

Appendix 10: Attachment A Proposed Land Exchange 1998

Appendix 11: Zoning Amendments, Strategic Planner's Report Dec 1999

Appendix 12: Map 9: Cooroora Creek Park showing boundaries

Appendix 13: Map 10: Upper Cooroora Creek arising in Yurol Forest, Tewantin National Park

Appendix 14: Map 11: Junction of Cooroora Creek and Six Mile Creek near Graham's Road, off Louis Bazzo Drive



## REFERENCES

Bettens, Doug; Personal Communication, 20th May, 2012, Pomona Heritage Festival.

Cooroora Creek Park File, Noosa Shire Council, Noosa Offices, Tewantin, Sunshine Coast Council; accessed 14th June 2012. [www.sunshinecoast.qld.gov.au](http://www.sunshinecoast.qld.gov.au)

Department of Environment and Resource Management, Queensland Government, 52-64 Currie Street, Nambour. [www.derm.qld.gov.au](http://www.derm.qld.gov.au)

Hansen, Peter; Personal Communication, 5th April, 2012.

Haslam, Stephanie; 2011, *Noosa's Native Plants*, 3rd Edition, Noosa Integrated Catchment Association, Tewantin.

Kelly, Dianne; all photos other than those acknowledged to Noosa Museum and NDLG are not to be reproduced or reprinted without permission (email: [dianne.kelly4@bigpond.com](mailto:dianne.kelly4@bigpond.com))

Leavey, Col; Personal Communication, 30<sup>th</sup> July 2012.

Mary River Catchment Coordinating Committee Frog Monitoring Records, July 2009-June 2010 [www.mrccc.org.au](http://www.mrccc.org.au)

Noosa District Landcare Group; photos of aerial shot on the Cover Page, plus Photos 7 to 22. [www.noosalandcare.org](http://www.noosalandcare.org)

Noosa Museum and Cooroora Historical Society, Maps 1 to 6 and Photos 1 to 6 and 23. [www.noosamuseum.spiderweb.com.au](http://www.noosamuseum.spiderweb.com.au)

Page, Alan; Personal Communication, 1 August 2012.

Playford, Noel; Personal Communication, 20th May, 2012, Pomona Heritage Festival.

Strategic Planners Report, Environment and Planning Directorate Reports 3/12/1999, Cooroora Creek Park File, Noosa Shire Council.

The Noosa Plan, 2011, Section 8, Mary River Catchment, accessed 26th July 2012, SCRC [www.sunshinecoast.qld.gov.au](http://www.sunshinecoast.qld.gov.au)

*Wild Plants of Greater Brisbane*, 2003, Queensland Museum, Queensland Government, Brisbane.



**Appendix 2: Certificate of Title Lot 37**

14523018 V0 See ATS for Status Page 1 of 2

A 57192

(C)  
 Dealing No. D890440  
 Reference to previous  
 Volume Folio  
 4517 110 and 111



**CERTIFICATE OF TITLE**  
 REGISTER BOOK

VOL. 4523 FOLIO 18

VOL: 4523 FOLIO: 18



JOHN GEORGE ELLIOTT

is now seized  
 of an Estate in Fee-simple, subject nevertheless to such encumbrances, liens, and interests  
 as are by memorandum notified hereon, in All that piece of Land situated in the County  
 of March Parish of Tuckekoi City of  
 Containing 18 acres 10 perches

more or less, as shown on the Plan hereon, and therein edged red, Being Resubdivision  
 37 of subdivision 17 of portion 94V on registered Plan No. 63022

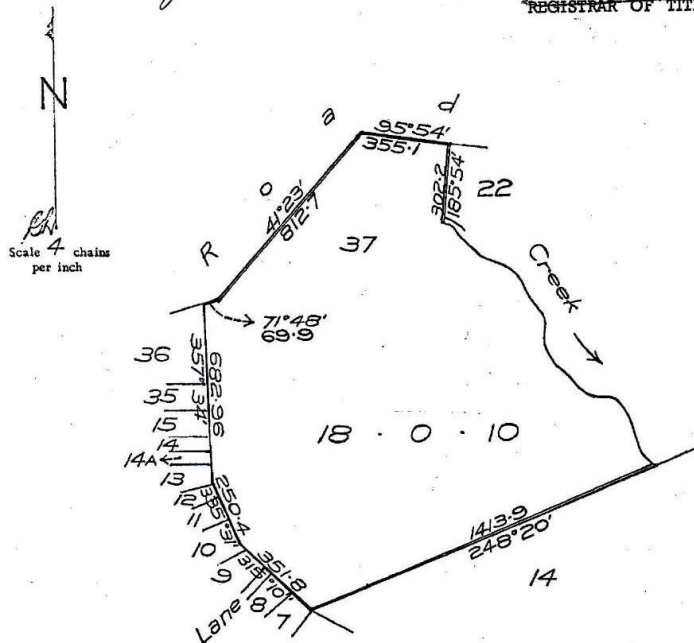
SAVING ALWAYS to the Crown all the rights and interests reserved to it by the  
 original Deed of Grant No. 98317

IN WITNESS whereof, I have hereunto signed my name and affixed my seal,  
 this 27th day of November One thousand nine hundred and seventy

Signed, Sealed, and Delivered  
 in presence of

*[Handwritten signature]*

*[Handwritten signature]*  
 REGISTRAR OF TITLES.



**Appendix 3: Map of the Town of Pomona, Gympie Land Agents District, Department of Public Lands, Brisbane. 1974**







**Appendix 6: 1988 Certificate of Title Lot 37**

17172048 VOL 7172 FOLIO 048 Status Page 1 of 2

**CERTIFICATE OF TITLE**

5192

Vol. 7172 Fol. 48

Dealing No.: J490128J

**QUEENSLAND**

Previous Title:  
Vol. 4523 Fol. 18



VOL: 7172 FOLIO: 048



17172048

Issued: 4 August, 1988

(Page 1)

I certify that the person described in the First Schedule is the registered proprietor of the undermentioned estate in the land within described subject nevertheless to such easements encumbrances and interests as are shown in the Second Schedule.

Witness: *[Signature]*

*[Signature]*  
Acting Registrar of Titles. 

ESTATE AND LAND

Estate in Fee Simple in Lot 37 on Registered Plan No. 63022 County of March Parish of Tuckekoi  
Containing 7.3096 hectares

FIRST SCHEDULE

COUNCIL OF THE SHIRE OF NOOSA

SECOND SCHEDULE

- 1. Rights and interests reserved to the Crown by Deed of Grant No. 98317 (Por 94V).

**NOTE:** ENTRIES RULED THROUGH AND AUTHENTICATED BY THE SEAL OF THE REGISTRAR OF TITLES ARE CANCELLED  
PERSONS ARE CAUTIONED AGAINST ALTERING OR ADDING TO THIS CERTIFICATE OR ANY NOTIFICATION HEREON

# Appendix 7: Noosa Shire Council Resumption Request

602374385 V1 REGISTERED Recorded Date Page 1 of 3

<p style="font-size: 2em; font-weight: bold;">J490128J</p> <p style="font-size: 1.5em; font-weight: bold;">\$52.00</p> <p style="font-size: 1.2em;">1 JUN 1988 10:45 AM</p> <p style="font-size: 1.2em;">2394 RESUMP</p>	<p style="font-size: 0.8em;">BACKING SHEET</p>	<p style="font-size: 0.8em;">CORRESPONDENCE NUMBER.....</p> <p style="font-size: 0.8em;">REQUISITIONS</p> <p style="font-size: 1.5em; font-weight: bold; text-align: center;">12/5/88</p> <p style="font-size: 0.8em;">JBT 300 : \$29.00 NAT FEE</p> <p style="font-size: 0.8em;">5-7-88 No FEE</p> <div style="border: 1px solid black; padding: 5px; width: fit-content; margin: 10px auto;"> <p style="font-size: 0.8em;">19 JUL 1988</p> <p style="font-size: 1.2em; font-weight: bold;">G 74824</p> <p style="font-size: 0.8em;">Paid Vnde No. ....</p> </div>
<p style="font-size: 1.2em; font-weight: bold;">GENERAL REQUEST TO THE REGISTRAR OF TITLES</p> <p style="font-size: 0.8em;">I/CODE 25-7-88</p>		
<p style="font-size: 0.8em;">ENTERED IN THE REGISTER BOOK</p> <p style="font-size: 0.8em;">VOLUME 4023</p> <p style="font-size: 0.8em;">FOLIO 18</p> <p style="font-size: 0.8em;">AT 8-28 AM/PM-</p> <p style="font-size: 1.2em; font-weight: bold;">29 JUL 1988</p> <p style="font-size: 0.8em;">REGISTRAR OF TITLES</p>		
<p style="font-size: 1.2em; font-weight: bold;">NEW TITLE</p> <p style="font-size: 1.2em; font-weight: bold;">Vol. 7172 Fol. 48</p>		
<p style="text-align: center;">BELOW THIS LINE TO BE COMPLETED BY LODGER</p> <p>LODGED BY: .....</p> <p>ADDRESS: <u>Noosa Shire Council</u></p>		<p style="text-align: center;">LODGER CODE</p>
<p style="text-align: center;">CERTIFICATES OF TITLE, DEEDS OF GRANT, DECLARATIONS ETC. LODGED WITH THIS DOCUMENT (TO BE COMPLETED BY LODGING PARTIES)</p> <p>1. .... LODGED BY .....</p> <p>2. ....</p> <p>3. ....</p>		
<p style="text-align: center;">BELOW THIS LINE FOR DELIVERY NOTATIONS</p> <p style="text-align: center;">RECEIPT NOTATIONS</p> <p>ITEMS RECEIVED: <span style="border: 1px solid black; padding: 2px;">DEED</span></p> <p>FIRM NAME: <u>A. C. FOX &amp; ASSOCIATES</u></p> <p>PER: <u>On behalf of Noosa Shire</u></p> <p>AUTHORITY: <u>Solicitors for Applicant</u></p> <p>DATE: <u>Per 29/07/88 Doc 84-88</u></p>		<p style="text-align: center;">OFFICE USE</p>
<p style="text-align: center;">ITEMS DELIVERED BY POST</p> <p style="text-align: center;">FORWARDED TO LODGER OF THIS DOCUMENT ON</p>		

- INSTRUCTIONS FOR COMPLETION (Form 14)
1. Document attracts stamp duty.
  2. Typewriting and handwriting should be clear, legible and in permanent dense black or blue ink.
  3. Deletions for the purpose of effecting alterations are not to be made by erasure or painting over. Items to be deleted are to be ruled through and all alterations are to be initialled by the parties to the dealing.
  4. All panels are to be completed or ruled up. If insufficient space attach annexure FORM 12. The panel should then only contain the words "See Annexure 1" (inserting appropriate letter).
  5. The following instructions relate to the corresponding side notes on the form.
    - Item (1) (a) Insert the full name/s of the registered proprietor of the estate or interest the subject of this request.
      - (b) If the estate or interest is held in trust or by a person representing the trust should be identified, e.g. "as Trustee under Nomination of ... Trust No. ....", "as personal representative of the estate of ... deceased".
    - Item (2) Insert e.g. "fee simple", "Lease No. ....".
    - Item (3) Insert e.g. "as joint tenants", "as tenants in common in equal shares". (If in unequal shares then show each share as a fraction.)
    - Item (5) The description of the land should include "Lot .... on R.P. ....". If the land in the instrument of title is presently described by an historic description, e.g. "Subdivision .... of re subdivision .... etc.", then unless the register book bears a notation that the description has been converted to a "Lot .... on R.P. ....", the historic description should be inserted in full.
    - Item (6) (a) State only the type of document and dealing number of any prior mortgages, encumbrances etc. encumbering the estate or interest the subject of this request, e.g. if estate or interest other than an estate in fee simple, then show only the mortgages, encumbrances, etc. affecting that estate or interest.
      - (b) If a Building Unit/Group Title, then any interests encumbering the common property should also be included.
      - (c) If none, then show "nil".
    - Item (7) Insert e.g. "In accordance with the Deed dated ..... deposited herewith that you record the retirement of ..... from the above trusts."
      - Item (9) (a) If the document is executed by a corporation or other body other than by its attorney, then its seal should be affixed thereto with a certificate that such was affixed by the proper officer verified by his/her signature. The full names of the signatories and their designations should be shown.
        - (b) If an attorney executes the document then the full name of the attorney and the source of the attorney's authority should be shown e.g. "AB by his duly constituted Attorney XY under Power of Attorney No. ....". The attorney's signature should then follow.

S&M Law Stationers • By Appointment, License No 1-85



**Appendix 7a: Noosa Shire Council Resumption Request**

Form 14  
Queensland  
Real Property Act 1861-1985  
Real Property Regulations 1986  
**GENERAL REQUEST**

TO THE REGISTRAR OF TITLES TO REGISTER A RESUMPTION

REGISTRAR OF TITLES OFFICE  
\$1.00

*\*Insert nature of request (See Note below)*

REGISTERED PROPRIETOR (Full name) (1) JOHN GEORGE ELLIOTT

ESTATE OR INTEREST (2) FEE SIMPLE

HOW ESTATE OR INTEREST IS HELD (3) (if more than one registered proprietor)

APPLICANT (Full name) (4) COUNCIL OF THE SHIRE OF NOOSA

DESCRIPTION OF LAND (5)

Volume	Folio	County	Parish	Description
4523	1E	MARCH	TUCHEKOI	Lot 37 on Registered Plan No. 63022  (15 lots 10 p.p.h.) 7.3096 A2

MORTGAGES, ENCUMBRANCES, ETC. (6) NIL

REQUEST (See note above) (7) I HEREBY REQUEST THAT - in accordance with Proclamation dated <sup>14th</sup> 14 April, 1988 deposited herewith you register a resumption for flood mitigation and park purposes over the above described land

EXECUTION (8) SIGNED THIS 9th DAY OF May 1988 AND CERTIFIED CORRECT FOR THE PURPOSE OF REGISTRATION BY -

(9) APPLICANT (signature) *[Signature]*  
OR  
his/her SOLICITOR (signature) *[Signature]*  
WAKEFIELD ROBERT SYKES  
(Full name of Solicitor to be printed)

NOTE: This form shall be used in the case of a request where a form is not otherwise prescribed.

## Appendix 8: Resumption and Gazetting Notices, 1988

15

THE DESCRIPTION OF THE WITHIN LAND IS CONVERTED  
TO LOT(S) 37

ON REGISTERED PLAN No. 63022

- 1 APR 1987 *[Signature]* REGISTRAR OF TITLES

---

By Resumption the whole

of the within land is  
vested in Council of the Shire of Noosa

No. 4801231 PRODUCED 1 June 1988  
REGD.

Reference to New Titles  
Vol: 7172  
Sols 4829 JUL 1988 *[Signature]*

ACTING REGISTRAR OF TITLES

### A PROCLAMATION

By His Excellency the Honourable Sir Walter Benjamin Campbell,  
one of Her Majesty's Counsel learned in the law, Governor in and  
over the State of Queensland in the Commonwealth of Australia.  
(L.S.)

W. B. CAMPBELL,  
Governor

IN pursuance of the powers and authorities in me vested under the  
provisions of the *Acquisition of Land Act 1967-1986*, I, Sir Walter  
Benjamin Campbell, the Governor aforesaid, acting by and with the  
advice of the Executive Council, do, by this my Proclamation, notify  
and declare that the land described in the Schedule hereto is taken by  
the Council of the Shire of Noosa for Flood Mitigation and Park  
purposes and shall vest in the Council of the Shire of Noosa for an  
estate in fee-simple on and from the sixteenth day of April, 1988.  
L.A.B. 5841

Given under my Hand and Seal at Government House, Brisbane,  
this fourteenth day of April, in the year of our Lord one thousand  
nine hundred and eighty-eight, and in the thirty-seventh year of Her  
Majesty's reign.

By Command, W. H. GLASSON  
God Save the Queen!

### *The Schedule* THE GYMPIE LAND AGENT'S DISTRICT Constructing Authority, Council of the Shire of Noosa Land Taken

*County of Maroo, parish of Tuckekoi*  
Lot 2 on Registered Plan 122335, containing an area of 4 acres  
1 rood 38.1 perches and being the whole of the land contained in  
Certificate of Title, volume 4354, folio 233.

Lot 37 on Registered Plan 63022, containing an area of 18 acres  
10 perches and being the whole of the land contained in Certificate  
of Title, volume 4523, folio 18.

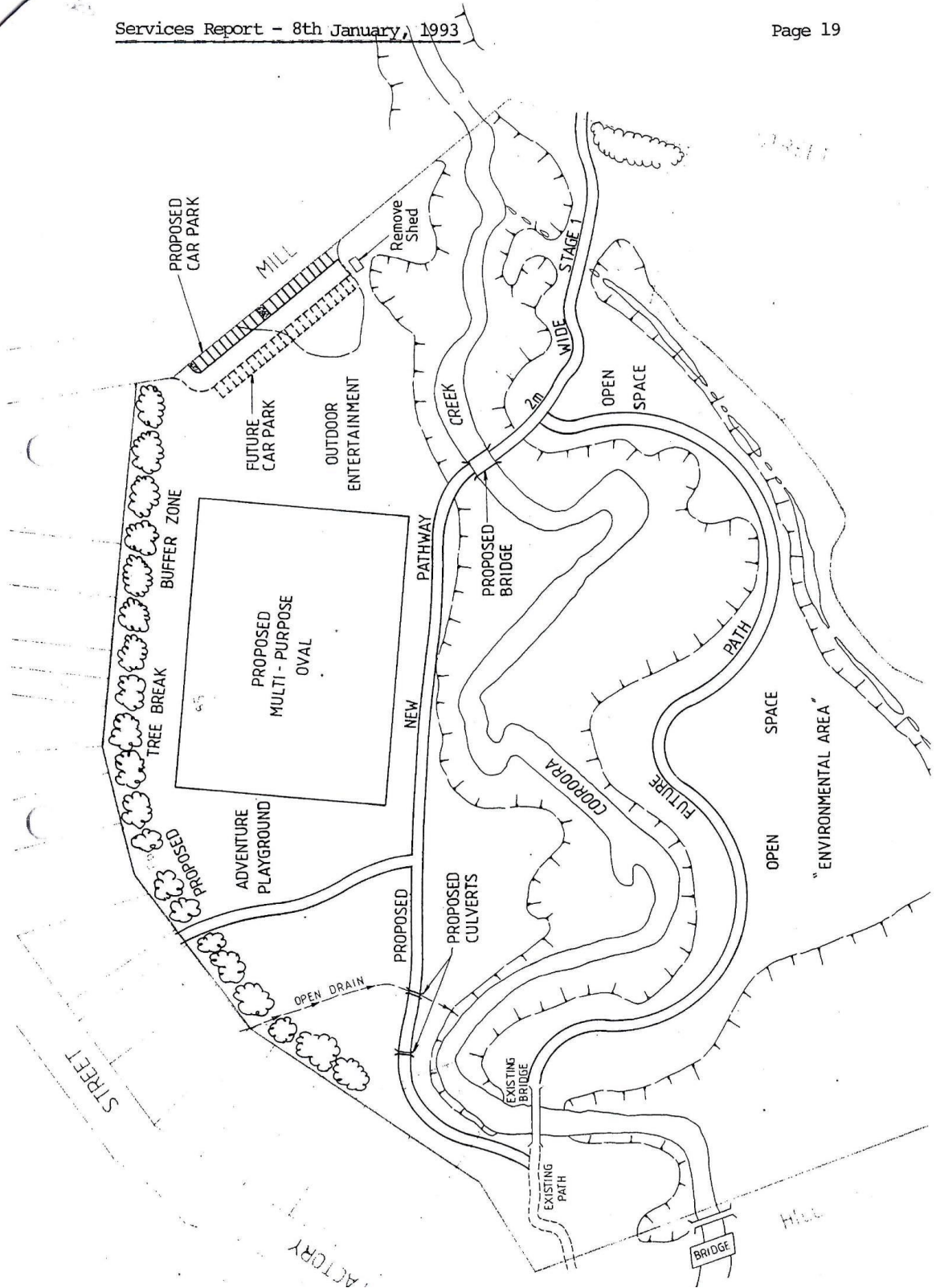
Gov. Gaz., 16th April, 1988, No. 95, page 2135

Appendix 9 Drawing 1: Cooroora Creek Development Plan 1993

4(A)

Services Report - 8th January, 1993

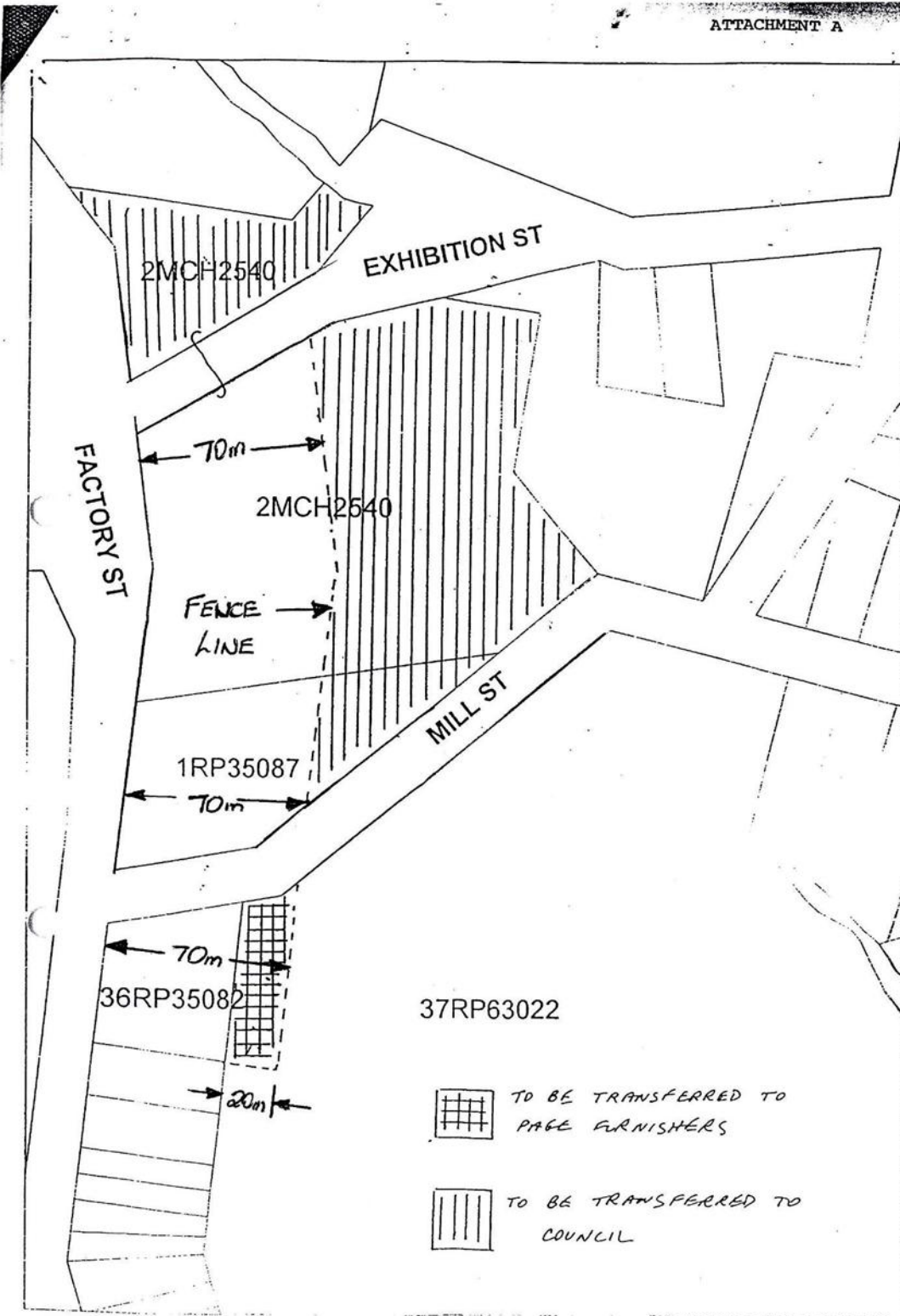
Page 19



Appendix 10: Attachment A Proposed Land Exchange April 1998

ATTACHMENT A

Page 57



1 : 2000

## Appendix 11: Zoning Amendments, Strategic Planner's Report Dec 1999

49

Environment & Planning Directorate Reports 3/12/1999 - Ordinary Meeting 16/12/1999

6

### 6. STRATEGIC PLANNER'S REPORT

FILE: 18590

SUBJECT: Zoning Amendments for Certain Lands

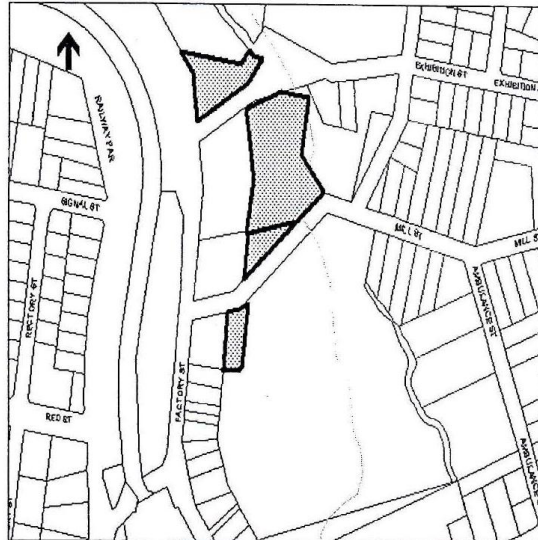
Throughout the Shire there are many parcels of land that are either unzoned or contained in an inappropriate zone, such as parkland that is included in a residential zone. For the most part these anomalies can be rectified with an IPA-based Planning Scheme. In the interim, there are a number of sites where the zone is clearly inappropriate and consideration should be given to an earlier change. This report makes recommendations on Scheme amendments to change the zoning of land and provides the background to and reasons for the proposed change.

#### 1. 31 FACTORY STREET, POMONA

#### MAP 1.1

##### 1.1 BACKGROUND

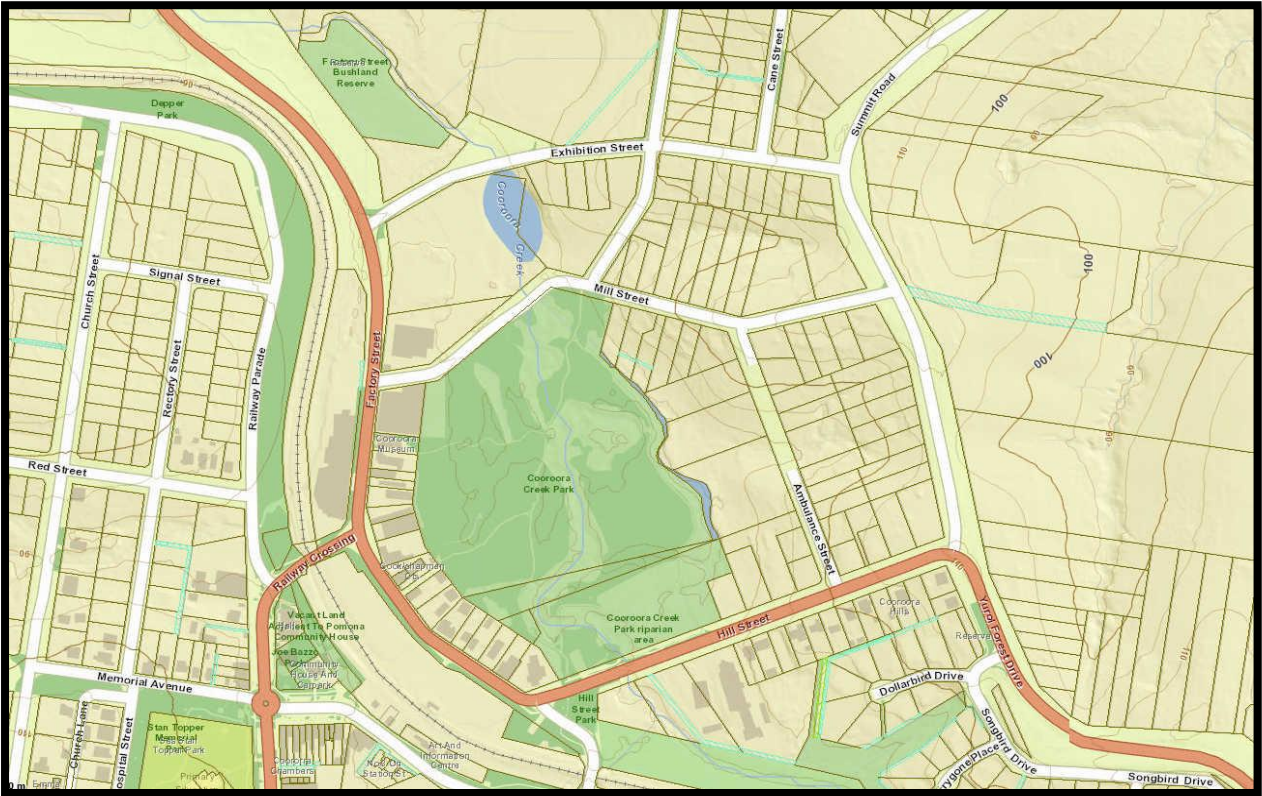
An agreement has been made between Council and Page Furnishers for a land exchange. Council has transferred to Page Furnishers 1,320m<sup>2</sup> of park, which abuts the eastern side of its factory. In return, Council has received approximately 17,000m<sup>2</sup> of creek side land to the north, which will allow for extensions to Cooroora Park. The subject land is shown on Map 1.1. To provide Page Furnishers with the development rights it requires for expansion of its business, it is necessary to include the former parkland within the Village Industry Zone. It is also intended to include the land Council is receiving within the Open Space Zone.



##### 1.2 RECOMMENDATION

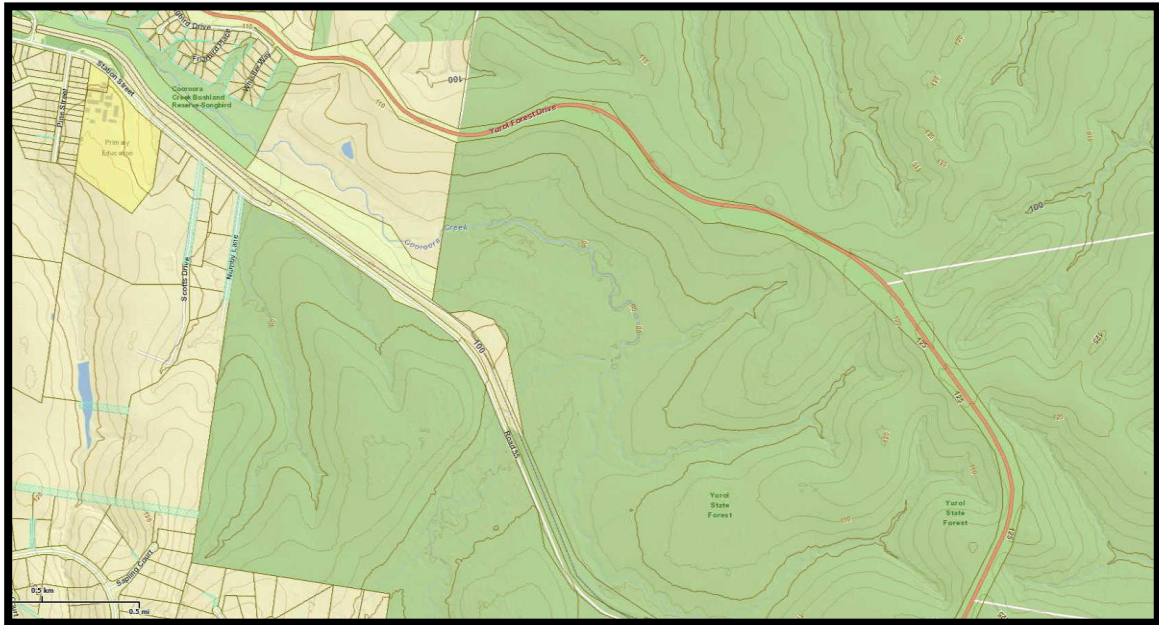
- Exclude part of Lot 37 on RP63022, Parish of Tuckekoi, from the Rural Pursuits Zone and include it in the Village Industry Zone.
- Exclude part of Lot 2 on MCH2540 and Lot 1 on RP35087, Parish of Tuckekoi, from the Rural Pursuits Zone and include it in the Open Space Zone.

**Appendix 12: Map 9 Cooroora Creek Park showing boundaries  
(SCRC Website source: MyMaps 2012)**

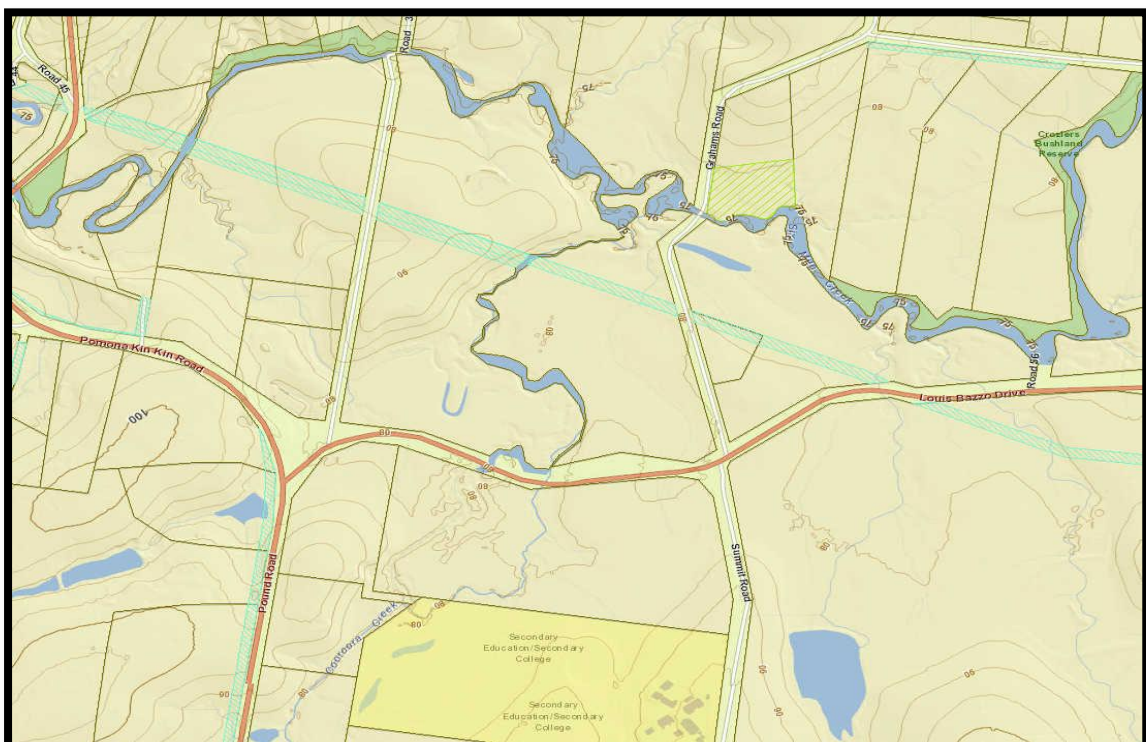


**NB There appears to be a disjunction between boundaries shown on the map at Appendix 11: Zoning Amendment 1999 and the boundaries on Map 9 above.**

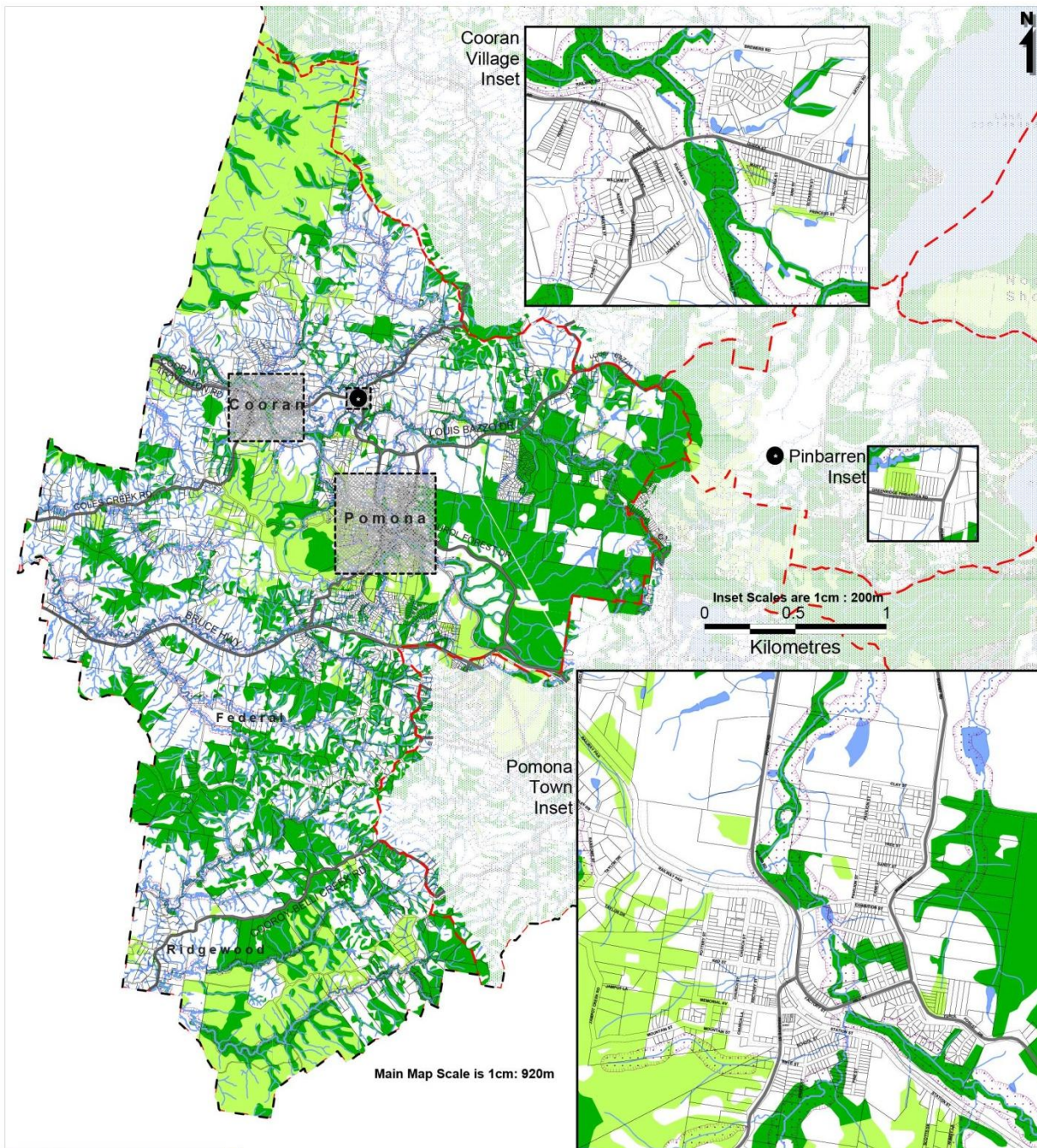
**Appendix 13: Map 10 Upper Cooroora Creek arising in Yurol Forest, Tewantin National Park**  
(SCRC Website source: MyMaps 2012)



**Appendix 14: Map 11 Junction of Cooroora Creek and Six Mile Creek near Grahams Road, off Louis Bazzo Drive**  
(SCRC Website source: MyMaps 2012)



**ADDITIONAL MAPS SHOWING MARY VALLEY CATCHMENT WITH BIODIVERSITY AND ZONAL OVERLAYS**



Main Map Scale is 1cm: 920m

Inset Scales are 1cm : 200m  
0 0.5 1  
Kilometres



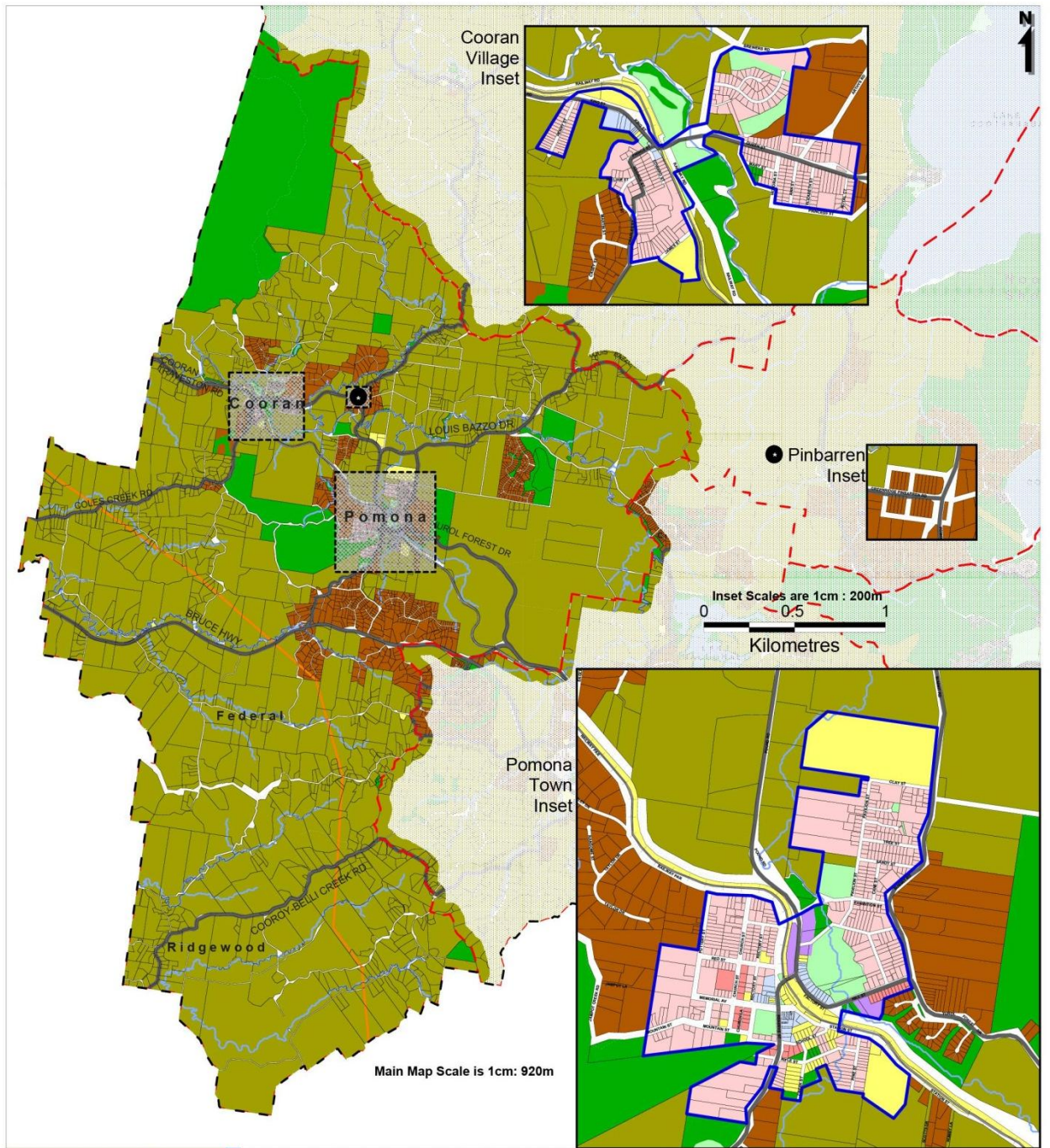
**Mary River Catchment Biodiversity Overlay (Map OM5.1)**

**The Noosa Plan**  
 Printed: March 2009  
 Version: Stage 2 Amendments commenced 11 May 2009  
 This map is a reproduction from Council's GIS, has a scale of accuracy of 1:25,000, although data on which it is based was gathered at mostly finer scales. Precise boundaries may need to be defined by site survey.  
 Council Copyright Reserved.  
 Workspace Location: Biodiversity\_MaryRiver.wor

- - - Locality
- - - Boundaries
- - - Cadastral Boundaries
- Major Waterbodies
- Riparian Buffer Area
- Environmental Protection Area
- Environmental Enhancement Area
- Koala Habitat Areas
- - - Noosa Shire Boundary
- - - Railway Line
- - - Major Road Network
- Inset
- Watercourses and Drainage Lines

Schedule 7 shows Koala Habitat Areas used for assessing development against the koala conservation criteria contained in the Nature Conservation (koala) Plan 2006 and Management Program 2006-2016.





### Mary River Catchment (Zone Map ZM5)



Printed: March 2009  
 Version: Revised 2 Amendments commenced 11 May 2009  
 This map is a reproduction from Council's GIS. It has a scale of accuracy of 1:25,000, although data on which it is based was gathered at mostly finer scales. Precise boundaries may need to be defined by site survey. Council Copyright Reserved.

Workspace Location: Zone\_MaryRiver.wor

- |  |   |   |
|--|---|---|
| <ul style="list-style-type: none"> <li>- - - Locality Boundaries</li> <li>- - - Property Boundaries</li> <li>- - - Major Water Bodies</li> <li>▭ Town/Village Boundaries</li> <li>▭ Approved route for electricity transmission operating works</li> </ul> | <ul style="list-style-type: none"> <li>▬ Major Road Network</li> <li>▬ Railway Line</li> <li>- - - Noosa Shire Boundary</li> <li>▬ Streams and Rivers</li> <li>▭ Inset</li> </ul> | <ul style="list-style-type: none"> <li>▭ Detached Housing</li> <li>▭ Semi-Attached Housing</li> <li>▭ Village Mix</li> <li>▭ Community Services</li> <li>▭ Industry</li> <li>▭ Rural Settlement</li> <li>▭ Rural</li> <li>▭ Open Space Recreation</li> <li>▭ Open Space Conservation</li> </ul> |
|--|---|---|

Note:  
 Levels of assessment may be altered by the Overlay Development Assessment Tables in Part 13.  
 Division 2 or 3 of the regulatory provisions of the SEQ Regional Plan may also apply to development applications for urban activities, rural residential purposes and reconfiguring of a lot on land outside the Urban Footprint of the SEQ Regional Plan.  
 Under Division 3, of the regulatory provisions of the SEQ Regional Plan an application to reconfigure a lot for rural residential purposes on land in the Regional Landscape and Rural Production Area of the SEQ Regional Plan and zoned Rural Settlement must be properly made before 27 October 2006.



**Leichhardt Tree (*Nauclea orientalis*)**



**Weeping Lillypilly (*Waterhousea floribunda*)**



**Swamp Box (*Lophostemon suaveolens*)**

