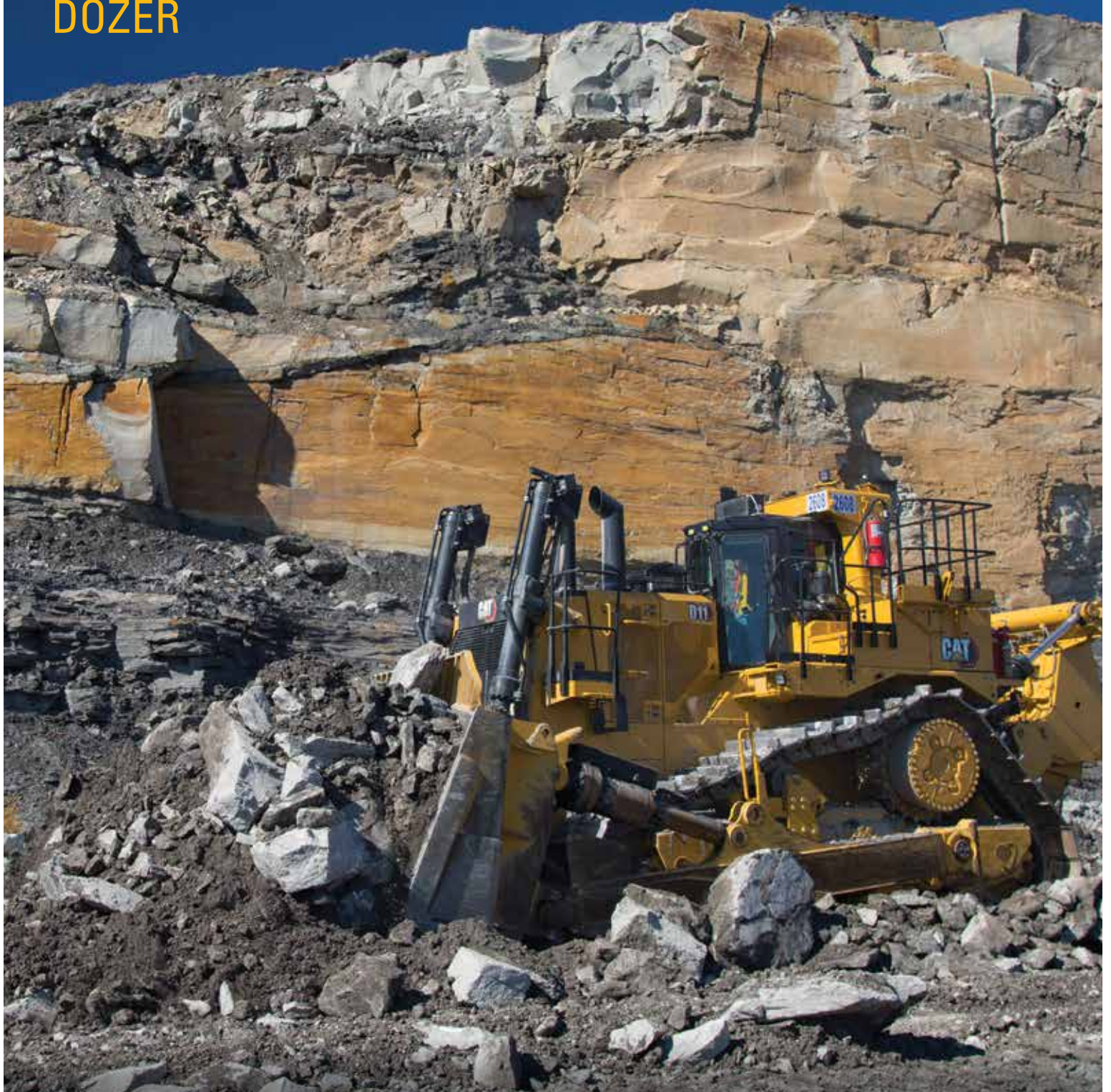


D11

DOZER



Engine Power Net SAE J1349/ISO9249

Operating Weight

Forward	634 kW / 850 hp
Reverse	714 kW / 957 hp
Standard	104 236 kg / 229,800 lb
Carrydozer	113 700 kg / 250,665 lb



GO THE DISTANCE WITH CAT® DOZERS

Caterpillar has the industry's broadest lineup of dozers working in dozens of applications, climates and environments. They're made to go the distance, with a proven design and durable construction that deliver multiple lives. And when it comes to productivity, they'll help your operation go the distance. They're infused with performance-enhancing technologies, easy to operate and service, and supported by the world-class Cat® dealer network. The result? High reliability, maximum productivity, long life — and the lowest cost of ownership of any material mover in the industry.

These benefits, and many more, make Cat dozers the ideal choice for every site or application. And they deliver a better bottom line to the most important mine in the world: yours.



THE NEW CAT® D11

MAKING THE BEST BETTER

How do you make the industry's best large dozer even better?
By listening to your customers.
You asked us to keep everything you love about the D11, but to make it more productive and efficient to lower your overall costs. **So we did.**
The D11 is safer, performs better, lasts even longer and delivers a more positive impact to your bottom line.

INCREASE PRODUCTIVITY & EFFICIENCY **BY ALMOST 8%**

- + High Power in Reverse
 - + Stator Clutch Torque Divider
 - + Extended Tilt Cylinders
-

BOOST FUEL EFFICIENCY **UP TO 8%**

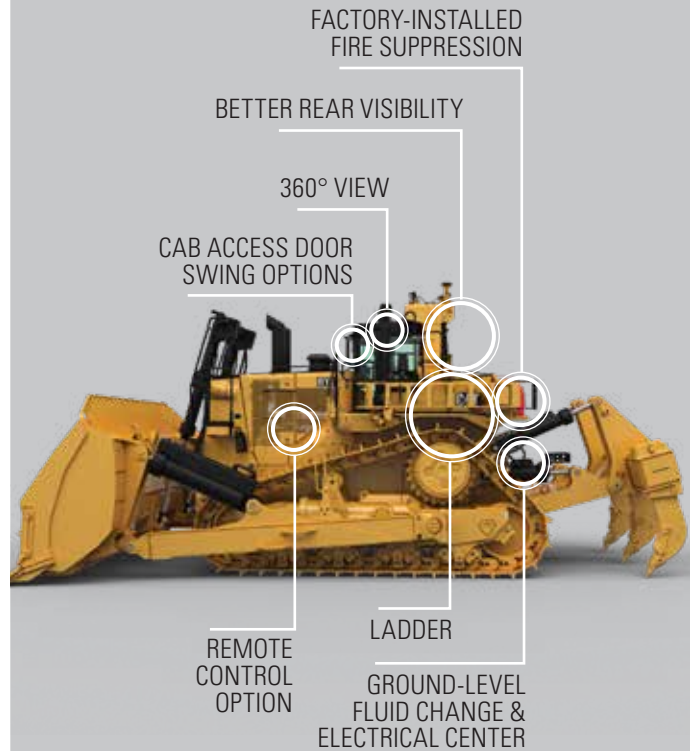
Load-sensing hydraulics and a new torque divider boost performance while lowering fuel costs.

LOWER MAINTENANCE & REPAIR COSTS **UP TO 5%**

Spend less time on maintenance thanks to a new case and frame design, improved bearings, redesigned pin joints, a 30% larger oil pan — and more.

LOWER OVERALL COST/BANK CUBIC METER **UP TO 6%**

KEEP OPERATORS SAFER





DELIVERING THE **LOWEST COST** OF OWNERSHIP

No other manufacturer has more experience moving material than Caterpillar. There are more Cat large dozers working around the world than any other brand. Our long history of evolution and innovation has helped us remain the leader for over a century.



A PROVEN DESIGN PHILOSOPHY

When it comes to making Cat large dozers, we follow a proven design philosophy that focuses around five main areas:

1. Keep operators safe, comfortable and in control
2. Ensure productivity in all applications
3. Take advantage of the latest technology
4. Make dozers that are easy to maintain and service
5. Make sure they are built to last

By following this philosophy—for every large dozer, every time—we ensure that our customers get what they expect from Caterpillar: the lowest cost of ownership of any material mover in the industry.



OPTIMIZE YOUR DOZING OPERATION

When it comes to productivity, the D11 will help your operation go the distance. Infused with performance-enhancing features, the D11 helps you improve the efficiency of your dozing operation.

UP TO 6% LOWER COST PER TON



thanks to improved productivity and fuel efficiency, and reduced maintenance and repair costs

UP TO 8% HIGHER PRODUCTIVITY



thanks to high-horsepower reverse

UP TO 8% BETTER FUEL EFFICIENCY

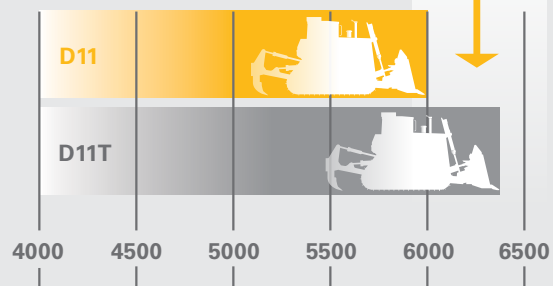


with combined load-sensing hydraulics and stator clutch torque divider

WHAT WOULD YOU DO WITH AN EXTRA MONTH OF PRODUCTIVITY A YEAR?



310 HOURS SAVED



HOURS / YEAR
BASED ON MOVING 5.65M BANK CUBIC YARDS OF MATERIAL

That's equal to 30 10-hour shifts.

PERFORMANCE AND EFFICIENCY ENHANCEMENTS TO BOOST YOUR PRODUCTIVITY

Load-sensing hydraulics—deliver more power to the dozer, increasing responsiveness and boosting fuel efficiency

Improved cooling system—enables better heat rejection and easier cooling core cleanout

Torque divider with stator clutch—automatically frees up the stator when torque is not required, delivering higher drivetrain efficiency for reduced fuel consumption



Improved reversing fan function—speeds up reverse flow radiator cleanout

High-horsepower reverse—speeds up non-productive traveling to reduce cycle time and boost overall productivity

Three cylinder options increase productivity:

- » Standard dual tilt
- » Extended pitch dual tilt
- » Carrydozer (shown)



PRODUCTIVE DOZING BEGINS WITH A PRODUCTIVE OPERATOR

SAFETY-INFUSED

A confident operator is a productive operator. So we've infused the D11 with safety to help operators feel safe and confident on the job.

DESIGNED FOR COMFORT

Noise, vibration, stress and fatigue all have an effect on operator performance — so we've designed an environment that helps minimize them.

PRODUCTIVITY-ENHANCED

The operator environment in the D11 is more than a cab; it's an integrated electronic platform designed to maximize productivity.



UNPARALLELED OPERATOR ENVIRONMENT

The operator station in the D11 is designed to reduce effort and exposure. The suspended undercarriage absorbs impact and reduces the shock loads transferred to the undercarriage by up to 50 percent — resulting in a smoother, more comfortable ride. The cab is unparalleled, with enhanced ergonomics, a fully adjustable air suspension seat, and controls that are easy to access and operate. Low-effort electronic steering, ripper and dozer controls are easily accessible and provide sure, precise maneuvering. The standard isolation-mounted cab reduces noise and vibration, and conveniently located air circulation vents evenly distribute airflow for maximum comfort.

INTUITIVE TOUCHSCREEN DISPLAY

The operator's primary display screen is large, fast and powerful, with plenty of memory and an intuitive menu structure. The multifunction touchscreen display is the operator's gateway to monitoring machine performance and a convenient way to modify machine parameters to tailor performance to the current task. The Work Monitor menu screen collects machine data and provides real-time feedback on machine performance to optimize productivity.

KEEP OPERATORS SAFE, COMFORTABLE AND IN CONTROL



SAFETY ENHANCEMENTS

- + Additional platforms, rails and handles
- + Clean line of sight to front and rear work areas
- + Optional 360° vision system for a bird's-eye view
- + Factory-installed fire suppression system
- + Third-generation powered ladder, which deploys and stores in seconds
- + Cab door swing option for easy ladder access
- + Various safety glass options
- + Automatic engine shutoff if dozer is tipped or rolls over
- + Seat belt warning system
- + Operator Not Present monitoring system
- + Cat MineStar™ Detect and Command capabilities



TAKE INNOVATION TO A NEW LEVEL

Cat large dozers became the industry leader by being innovative — and today's D11 takes innovation to a new level. Advanced technologies are completely integrated into the dozer, creating smart machines and more informed operators to maximize the productivity of your operation.

Products like Automated Blade Assist, Enhanced Auto Shift, Autocarry™, Cat Grade Control 3D, Automatic Ripper Control and Terrain with Automatic Blade Control are seamlessly integrated into the D11. In addition, the D11 comes out of the factory ready to integrate Cat MineStar™ technology, which takes accuracy, efficiency and safety even further.



**WORK MORE ACCURATELY,
SAFELY AND EFFICIENTLY**
CAT MINESTAR SOLUTIONS FOR DOZING

RUN YOUR DOZERS REMOTELY COMMAND FOR DOZING

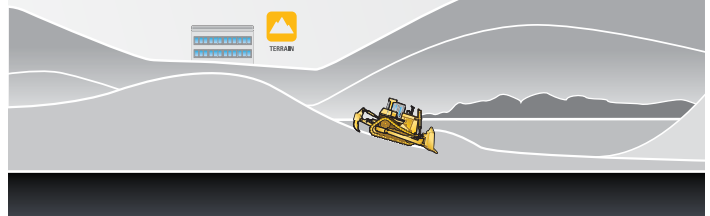
MineStar Command for dozing offers multiple levels of remote control and even semi-autonomous operation, helping increase operator safety and comfort — as well as the productivity of your dozer fleet. Whether you choose the over-the-shoulder remote control console or the remote operator station, your operators can have full control of the dozer without being exposed to dust, noise, vibration or other hazards. With semi-autonomous dozing, a single operator can manage up to four machines from a remote location — boosting productivity and safety.

SPEED THE WORK TERRAIN WITH AUTOMATIC BLADE CONTROL



Terrain's Automatic Blade Control feature provides full automatics, full blade load and overcut protection integrated into the machine control system on D11 dozers. These tools speed the work, decrease fuel burn and minimize overcut, overfill and rehandling.

INFORM YOUR OPERATORS TERRAIN FOR GRADING



With onboard guidance tools and real-time feedback, MineStar Terrain for grading gives operators the information to maximize machine efficiency by monitoring ore bodies, bench heights, cycle times and volume of material cut and filled. Inputs from the office tell operators where to dig or cut, how much material to move, when they've moved enough and even if they've moved too much.

AUTOCARRY

The Autocarry feature provides automatic blade control during the carry segment, reducing operator fatigue and helping to keep slip at the optimum level for best performance.

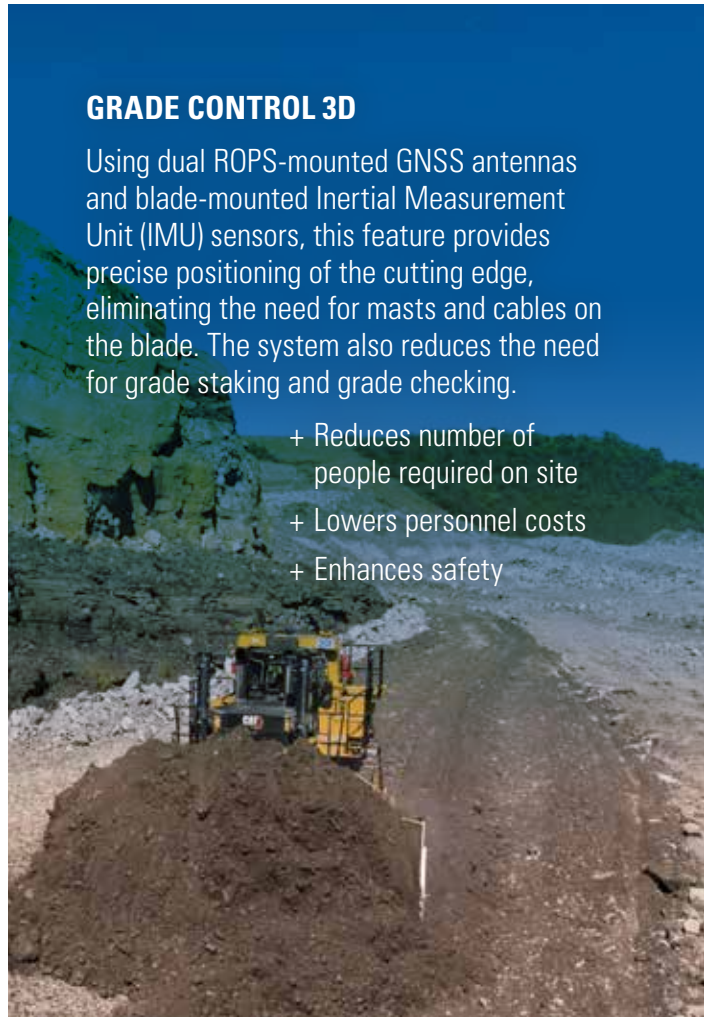
- + Increases productivity up to 15%
- + Lowers cost per unit of material moved
- + Delivers better performance in limited visibility



GRADE CONTROL 3D

Using dual ROPS-mounted GNSS antennas and blade-mounted Inertial Measurement Unit (IMU) sensors, this feature provides precise positioning of the cutting edge, eliminating the need for masts and cables on the blade. The system also reduces the need for grade staking and grade checking.

- + Reduces number of people required on site
- + Lowers personnel costs
- + Enhances safety



GET THE BENEFITS OF SEAMLESS INTEGRATION ONBOARD SOLUTIONS

DUAL-TILT AUTOMATED BLADE ASSIST

Automated Blade Assist (ABA) comes standard with the dual-tilt feature. This feature automates the movement of the blade to several key preset pitch positions. The positions of each segment — load, carry and spread — can be set through the Information Display or the push-button keypad.

- + Increases efficiency
- + Reduces operator workload

AUTOMATIC RIPPER CONTROL

This optional feature monitors the dozer speed with the ROPS-mounted GNSS to automatically adjust engine speed and ripper depth to minimize track slip.

- + Decreases wear and tear on the machine
- + Reduces operator fatigue



REDUCE YOUR DOWNTIME. REDUCE YOUR COSTS.

The Cat D11 is designed to be easy to service and maintain — so your machines spend less time in the maintenance shop and more time on the job. We've grouped maintenance points to minimize movement around the machine, and provided ground-level service access for all fluids and key electrical control.



LESS MAINTENANCE = LESS COSTS

New D11: 856 hours of M&R

D11T: 947 hours of M&R

TO MOVE 5.65M BANK CUBIC
YARDS OF MATERIAL



THE NEW D11 GOES EVEN FURTHER TO IMPROVE SERVICEABILITY.

- + 30% larger oil sump capacity, which extends 500-hour planned maintenance intervals.
- + Redesigned pin joints eliminate the need for line boring and simplify replacement of the bearing inserts on the blade ripper and push-arm trunnions.
- + AutoLube system, with ground-level fill and automatic shutoff capability.
- + Continuous fluid monitoring on all compartments, including direct fluid monitoring of the hydraulic tank and pivot shaft reservoir.
- + Ground-level service fluid change for coolant, hydraulic, engine and powertrain oil.
- + Single-plane cooling system for easy cleaning.



DOZERS THAT ARE MADE TO GO THE DISTANCE

The durability and reliability of Cat dozers are unmatched in the industry. It's not unusual for a Cat dozer to log more than 100,000 hours.

THE MORE DURABLE D11



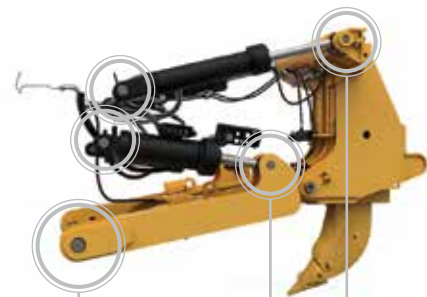
Redesigned case and frame to increase fatigue life



Larger equalizer bar with improved bearings



Replaceable push-arm trunnion bearing inserts



Ripper and blade pin bores with replaceable bearings



DOZE. REBUILD. REPEAT.

The D11 frame, powertrain and major components are built to be rebuilt—using new, remanufactured or rebuilt parts and components—so you can take advantage of a cost-effective second life of like-new performance at a fraction-of-new price.

The backbone of the machine is a heavy, strong and durable frame with high-strength steel castings and continuously rolled top and bottom frame rails. Frames provide durable support to the undercarriage, elevated final drives and other components.

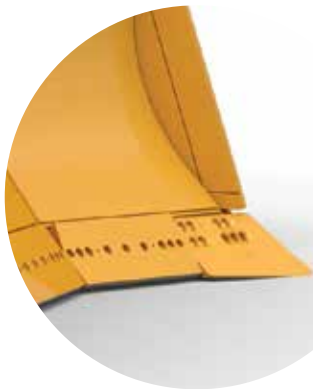




CAT BLADES: THE IDEAL MATCH FOR CAT DOZERS

Decades of dozer research and development have made Caterpillar the leader in blade technology. Cat blades are designed for loadability and constructed of high-tensile strength materials to produce big numbers over a long life.

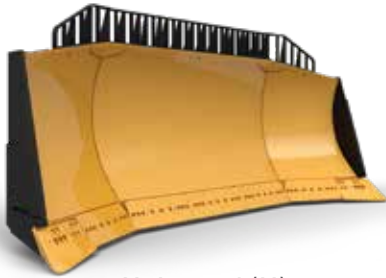
- + Optimal heel clearance and sharp cutting edge angle, which make the blade more aggressive in tough material
- + Superior loadability due to heavy moldboard construction and bolt-on hardened cutting edges and end bits
- + Ability to resist torsional bending and distortion
- + Material thickness chosen specifically to increase wear resistance and dozing effectiveness — without sacrificing machine balance or performance



Easier blade loading in hard-to-penetrate materials

Cat blades are designed with the optimal heel clearance. The D11 features a 29.3° interior angle between the back bottom of the blade and the ground. This clearance angle allows the blade to better penetrate and load.

BLADE OPTIONS for the D11



Universal (U)



Semi-Universal (SU)



Carrydozer (CD)

SPECIALTY BLADES

Work-tool options are available for applications requiring high-capacity blades for light materials.

- + Coal Blades
- + Reclamation Blades

REAR ATTACHMENTS



Single-shank Ripper



Multi-shank Ripper

SPECIALTY ATTACHMENTS

- + Multi-shank Leach Pad Ripper
- + Multi-shank Coal Ripper (five shank)
- + Counterweight
- + Rear Drawbar with Counterweight

TECHNICAL SPECIFICATIONS

See cat.com for complete specifications.

ENGINE			
Engine Model	U.S. EPA Tier 2 Equivalent U.S. EPA Tier 4 Final/EU Stage V	Cat C32 Cat C32	
Bore	145 mm	5.7 in	
Stroke	162 mm	6.4 in	
Displacement	32.1 L	1,959 in ³	
Engine Power			
Gross SAE J1995*			
Forward	670 kW	899 hp	
Reverse	757 kW	1,015 hp	
ISO 14396			
Forward	657 kW	882 hp	
Reverse (U.S. EPA Tier 2 Equivalent)	744 kW	998 hp	
Reverse (U.S. EPA Tier 4/EU Stage V)	745 kW	999 hp	
Net SAE J1349/ISO9249			
Forward	634 kW	850 hp	
Reverse	714 kW	957 hp	
*Excludes all fan losses.			
Engine ratings apply at 1,800 rpm.			
Net power advertised is the power available at the fly wheel when the engine is equipped with air cleaner, muffler, alternator, fan and engine emissions controls as required.			

SERVICE REFILL CAPACITIES		
Fuel Tank	1800 L	475 gal
Cooling System – Tier 4	177 L	46.8 gal
Cooling System – Tier 2	158 L	41.7 gal
Engine Crankcase Sump	133 L	35.1 gal
Powertrain	391 L	103.3 gal
Final Drives (each)	47 L	12.4 gal
Track Roller Frames (each)	94 L	24.8 gal
Pivot Shaft Oil	104 L	27.5 gal
Hydraulic System Tank Only	160 L	42.2 gal

WEIGHTS		
Operating Weight	104 236 kg	229,800 lb
Single-shank ripper, U blade, 28" ES shoes		
Operating Weight – Carrydozer	113 700 kg	250,665 lb
Single-shank heavy ripper, carrydozer blade, 36" ES shoes		

TRANSMISSION		
1.0 Forward	4.0 km/h	2.5 mph
2.0 Forward	7.0 km/h	4.4 mph
3.0 Forward	12.2 km/h	7.6 mph
1.0 Reverse	4.8 km/h	3.0 mph
2.0 Reverse	8.5 km/h	5.3 mph
3.0 Reverse	14.7 km/h	9.1 mph

D11 BLADE	CAPACITY		WIDTH OVER ENDBITS		HEIGHT	
Semi-Universal	27.2 m ³	35.6 yd ³	5567 mm	18.3 ft	2421 mm	7.9 ft
Universal	34.4 m ³	45.0 yd ³	6320 mm	20.7 ft	2421 mm	7.9 ft
Carrydozer	43.6 m ³	57 yd ³	6704 mm	22.0 ft	2517 mm	8.3 ft
Reclamation Universal	42 m ³	55 yd ³	6395 mm	21.0 ft	2725 mm	8.9 ft
Reclamation Universal	53.5 m ³	70 yd ³	7277 mm	23.9 ft	2768 mm	9.1 ft
Coal Universal	75 m ³	98.0 yd ³	8155 mm	26.8 ft	3064 mm	10.1 ft
Coal Universal	65 m ³	85.5 yd ³	7277 mm	23.9 ft	3064 mm	10.1 ft

DIMENSIONS	D11		D11 CD	
Ground Clearance*	798 mm	31.4 in	798 mm	31.4 in
Track Gauge	2896 mm	114 in	2896 mm	114 in
Width Without Trunnions (standard shoe)	3782 mm	148.9 in	3806 mm	149.8 in
Height (ROPS cab)*	4405 mm	173.4 in	4405 mm	173.4 in
Length of Track on Ground	4444 mm	175 in	4444 mm	175 in
Overall Length – Basic Dozer	6160 mm	242.5 in	6160 mm	242.5 in
Overall Length with SU Blade and SS Ripper**	10 525 mm	414.4 in	10 712 mm	421.7 in
*Includes grouser height for total dimensions on hard surfaces.				
**CD Blade on D11 CD				

STANDARD & OPTIONAL EQUIPMENT

Standard and optional equipment may vary. Consult your Cat dealer for details.

OPERATOR EQUIPMENT	STANDARD	OPTIONAL
ROPS/ FOPS, Sound-Suppressed Cab	•	
High-Definition Primary Touchscreen Display	•	
MineStar Terrain Display		•
Visibility – Rearview Mirrors	•	
Visibility – Dual Camera: Back-up & Ripper		•
Visibility – Four Cameras, 360 Degree View and Ripper Camera		•
Air Conditioner and Heater with Automatic Climate Control	•	
Seat – Cloth with Air Suspension	•	
Seat – Heated, Cooled, Adjustable Lumbar and Bolsters		•
Cab Glass – Single-Pane Tinted Safety	•	
Cab Glass – Dual-Pane Laminated Impact Safety		•
Cab Glass – High-Pressure Safety (40 psi / 275 kPa)		•
Cab Access – Blade Push-Arm Steps and Grab Handle	•	
Cab Access – Powered Ladder		•
CAT TECHNOLOGY PRODUCTS	STANDARD	OPTIONAL
VIMS SM	•	
Automated Blade Assist (ABA)	•	
AutoCarry™		•
Auto Ripper Control		•
Cat Terrain with 3D Blade Control		•
Cat Terrain Ready		•
Cat Product Link™ Elite (cellular)	•	
Cat Product Link™ Elite Dual Mode (cellular + satellite)		•
Cat Command for Dozing Ready		•
MAINTENANCE AND SERVICE	STANDARD	OPTIONAL
Ecology Fluid Drains – All Compartments	•	
Hinged Bottom Guards	•	
Sound-Reduction Sealed Bottom Guards		•
High-Speed Oil Change – Engine and Transmission	•	
Ground-Level Fast Fuel Fill	•	
Ground-Level Fluid Fill and Drain		•
Ground-Level Electrical Service Station	•	
S-O-S SM Fluid Sampling Ports	•	
Diagnostic Connector	•	
Ripper Lubrication – Autolube with Ground-Level Fill		•

UNDERCARRIAGE	STANDARD	OPTIONAL
Suspension-Type Undercarriage	•	
Sleeve Bearing Track	•	
Lifetime-Lubricated Rollers and Idlers	•	
Track Shoe (ES): 710 mm (28 in) Width	•	
Track Shoes (ES): 810 / 915 mm (32 / 36 in) Width (various configurations)		•
Track Links – Heavy-Duty XL – Duralink		•
Track Shoe – Abrasion Resistant		•
Track Shoe – Anti-Packing Round Hole		•
Abrasion Rollers and Idlers		•
Cold-Weather Rollers and Idlers		•
Sound-Suppression Undercarriage		•
Carrier Roller		•
ELECTRICAL	STANDARD	OPTIONAL
24V Electric Start, Dual Starters	•	
Batteries – 4x4, 200-Amp Hour, 12V	•	
Battery Isolation	•	
Battery Isolation – Dual Pole		•
Lights – Halogen – 13 Positions	•	
Lights – LED – 13 Positions	•	
Lights – LED – Premium Package		•
HYDRAULICS	STANDARD	OPTIONAL
Electronically Controlled, Load-Sensing Dozer Lift and Tilt	•	
Electronically Controlled, Load-Sensing Ripper Lift and Pitch	•	
Dozer Blade – Dual Tilt	•	
Dozer Extended Blade Pitch		•
Electronically Enabled Blade – Quick Drop	•	
Ripper Pin Puller		•
OTHER	STANDARD	OPTIONAL
Fire Suppression Ready		•
Fire Suppression Installed		•
CAT POWERTRAIN	STANDARD	OPTIONAL
Cat C32 Engine – US EPA Tier 4 Final, US EPA Tier 2 Equivalent, EU Stage V	•	
Enhanced Auto Shifting (EAS)	•	
Auto Engine Idle Shutdown	•	
Thermal Manifold and Turbo Shields	•	
High-Performance Single-Plane Cooling Module	•	
Stator Clutch Torque Divider – Electronic Control	•	
Powershift Transmission – Three-Speed Electronic Shift	•	
Hydraulic Cooling Fan – Automatic Reversing		•



D11

DOZER

For more complete information on Cat products, dealer services and industry solutions, visit us at www.cat.com

©2019 Caterpillar. All Rights Reserved.

Materials and specifications are subject to change without notice. Featured machines in photos may include additional equipment. See your Cat dealer for available options.

© 2019 Caterpillar. All Rights Reserved. CAT, CATERPILLAR, LET'S DO THE WORK, their respective logos, "Caterpillar Yellow", the "Power Edge" and Cat "Modern Hex" trade dress as well as corporate and product identity used herein, are trademarks of Caterpillar and may not be used without permission.

PEDJ0436
Build Number: 07A

