



MikroTik User Meeting

Venice, Italy, 2014

MUM #55



MikroTik

- More than 100 employees
- Established 1996
- RouterOS created in 1997
- RouterBOARD created in 2002
- First MUM in Prague 2006
- Biggest MUM in 2013, Indonesia - 1400 people

Where are we?



MikroTik at the MUM

- John Tully (CEO)
- Arnis Riekstins (CTO)
- Jānis Jankovskis (Sales, Training)
- Edmunds Aperans (Sales, Training)
- Uldis Čerņevskis (Support, Training)
- Sergejs Boginskis (Support, Training)
- Jānis Megis (Support, Training)
- Normunds Rustanovičs (Support)

Special thanks

Michele Pietravalle, **Horizon Srl**

Alessandro Campanella, **Fly Communications**

Useful info

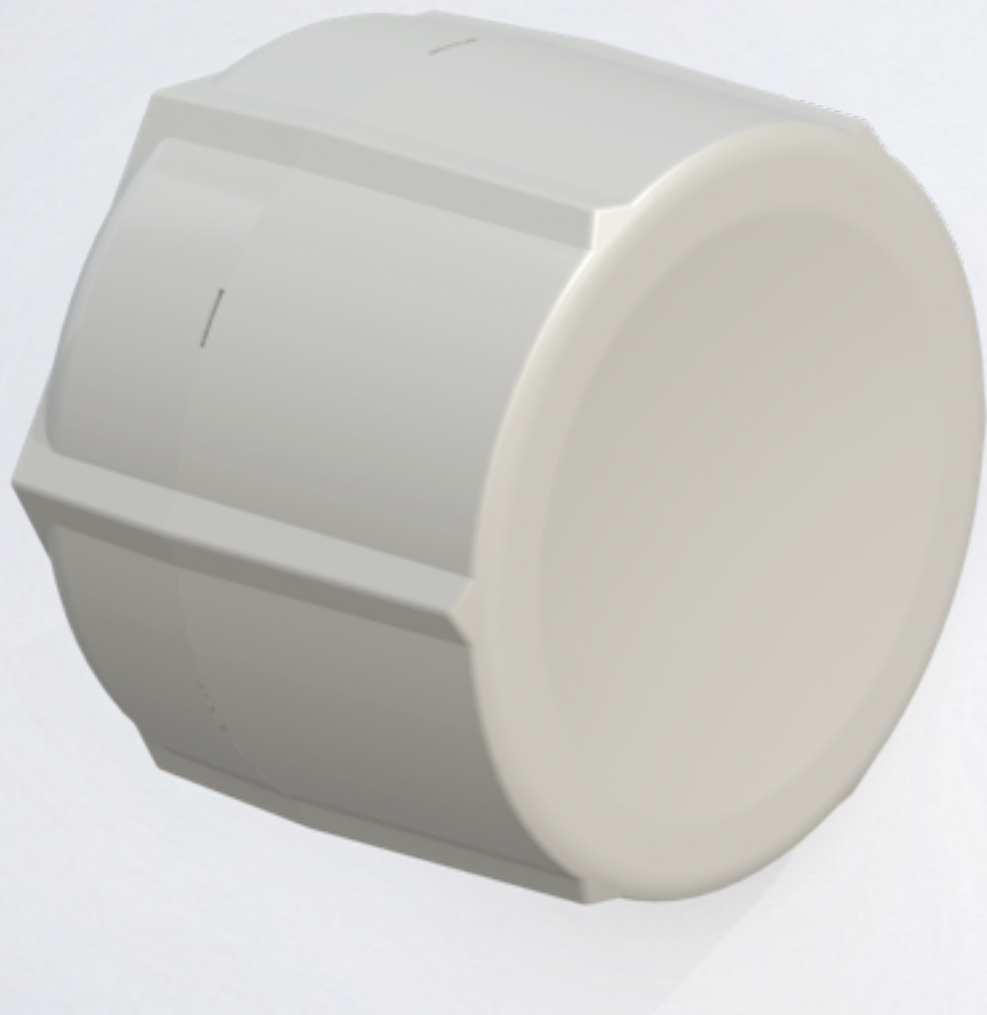
- Internet - SSID **MUM**
- Lunch with voucher only
- Exhibits hall
- Raffle at the end of MUM

After the MUM

- Presentation slides - wiki.mikrotik.com
- Videos - tiktube.com
- License will be emailed

RECENTLY INTRODUCED

SXT HG



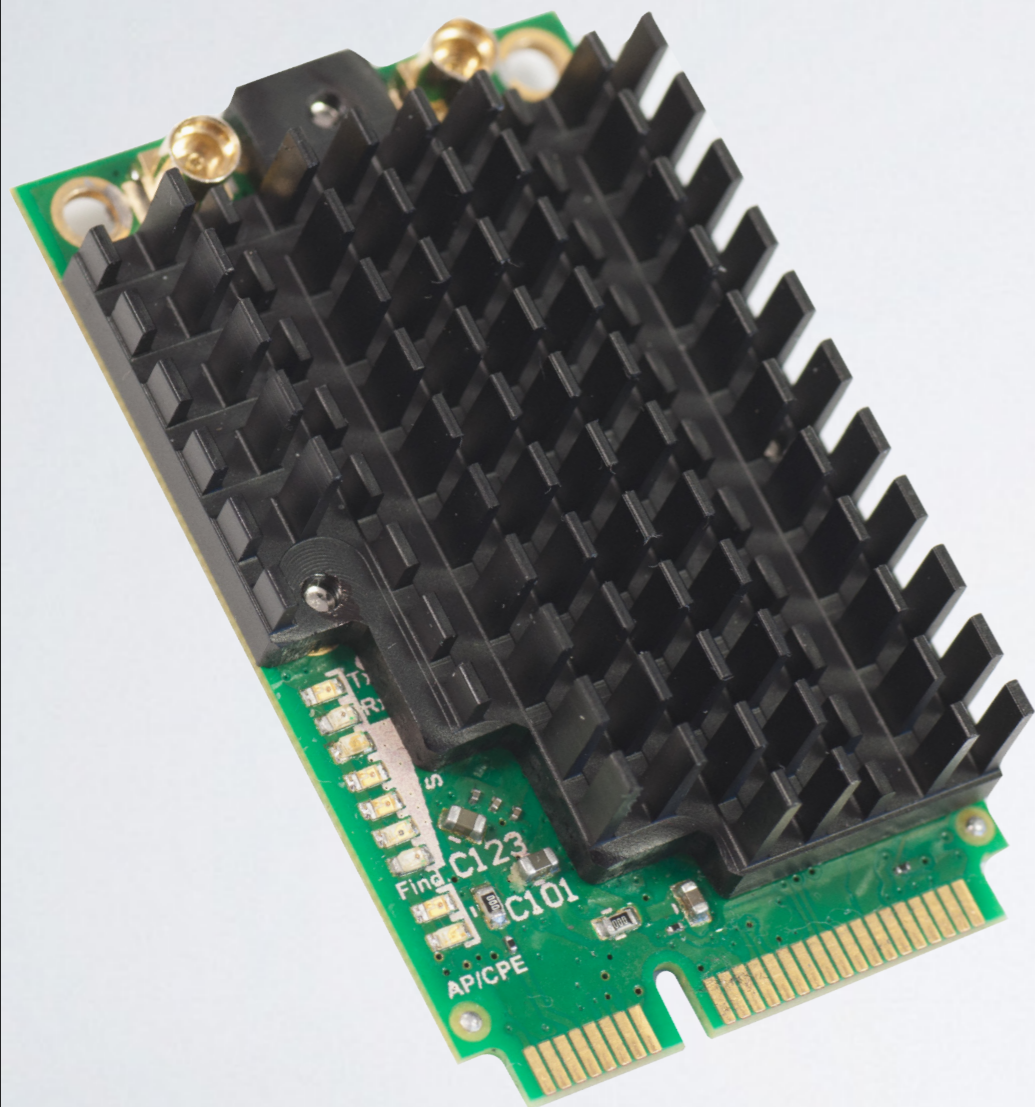
- Improved 17 dBi antenna
- New design
- 1000mW power
- Gigabit port
- 5GHz

R11E-2HND



- miniPCI-e to fit RB912
- 2GHz model
- 800mW power
- New AR9580 chipset
- uFl connectors

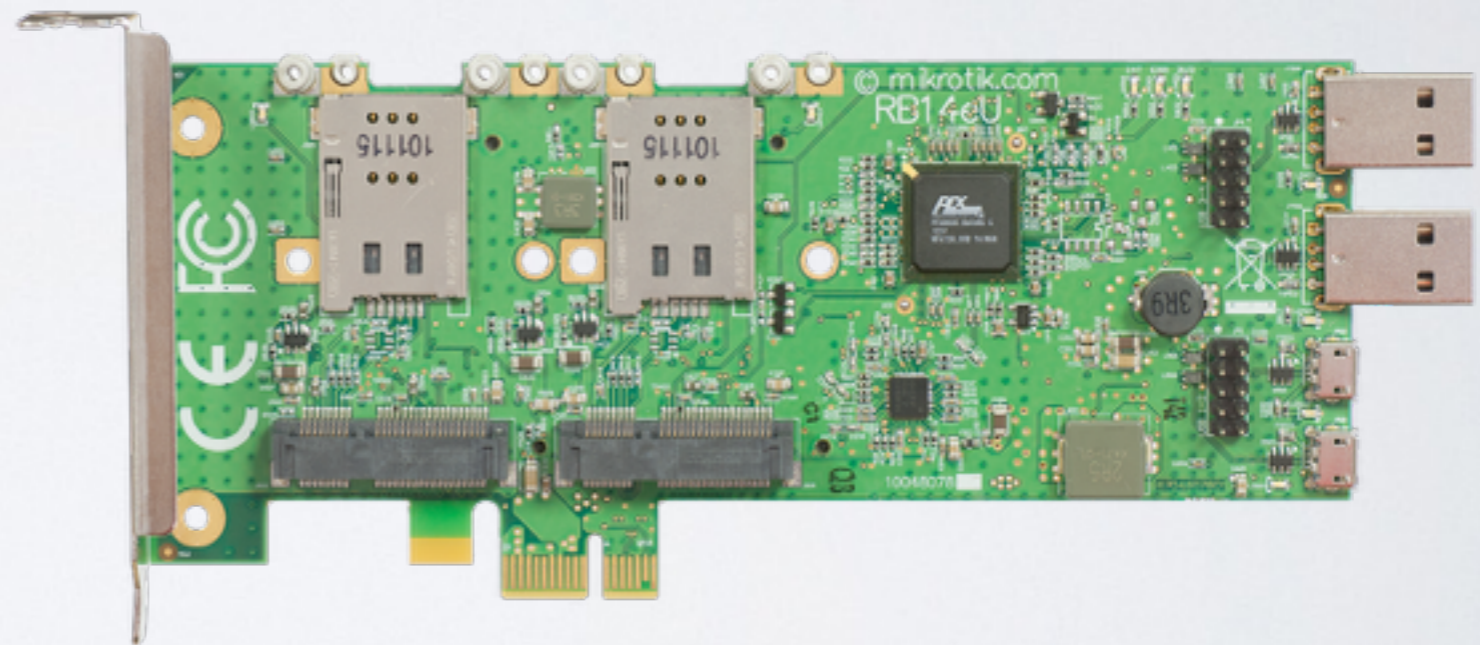
RIIE-HPND

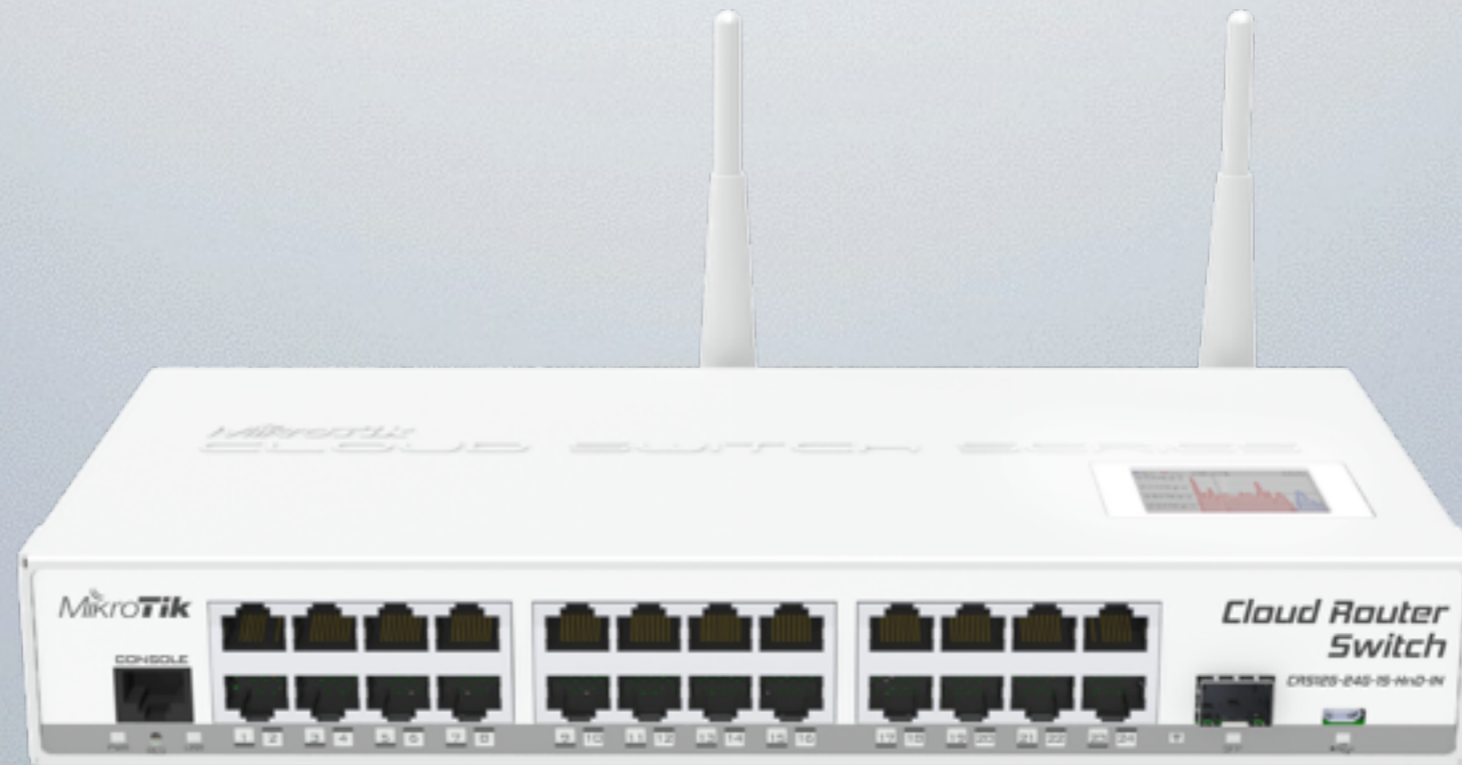


- miniPCI-e to fit RB912
- 2GHz and 5GHz models
- 1000mW power
- New AR9580 chipset
- MMCX

RB14EU

- 4 miniPCle card adapter
- RB14E for wireless
- RB14EU also for 3G





CLOUD ROUTER SWITCH

CRS

CRS

- Combines the best from a fully functional router and a Layer 3 switch
- 24 Switched Gigabit ports
- Powered by RouterOS
- SFP port and Touchscreen LCD
- Wireless model available
- Comes in desktop or rackmount case

CRS I 25-24G IS-2HnD-IN	CRS I 25-24G IS-IN	CRS I 25-24G IS-RM
2GHz wireless	-	-
Desktop case	Desktop case	Rackmount
SFP	SFP	SFP
24 Gigabit ports	24 Gigabit ports	24 Gigabit ports
RouterOS	RouterOS	RouterOS

QRT



- New integrated antenna
- 2.4GHz at 17dBi (\$149)
- 5GHz at 23dBi in April (\$169)
- Gigabit ethernet
- Super High power wifi

NEW PRODUCTS

CRS226



- Two SFP+ 10G ports and 24 Gigabit copper ports
- Desktop version \$289, available April
- Rackmount version \$299, available May

CCR1009



- 9 core Tileria CPU with Dual power supply
- 8x GBit ports, 1x SFP (\$425)
- 8x GBit ports, 1x SFP, 1x SFP+ (\$495)

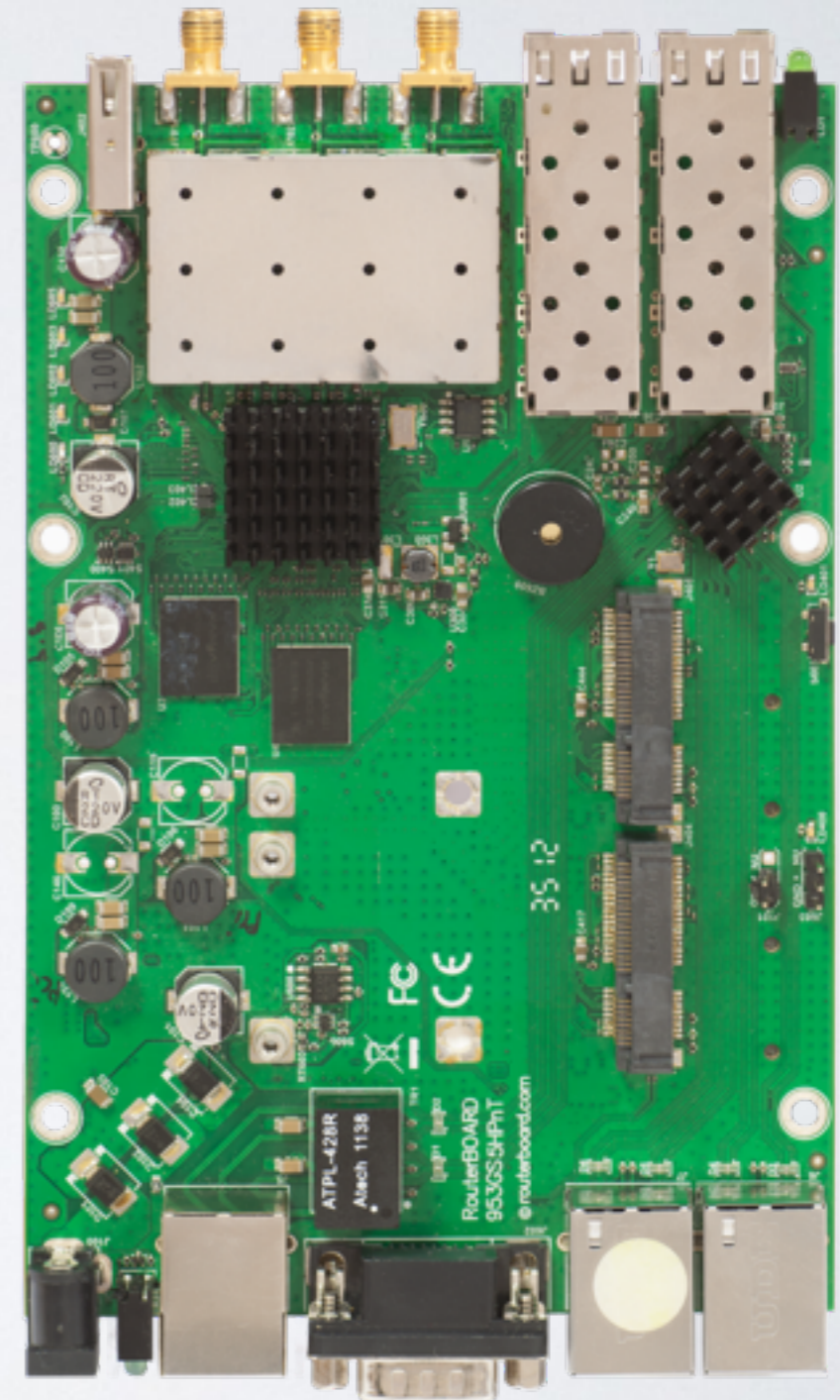
CCR1016-12S-1S+



- 16 core Tiler CPU
- 12 SFP ports and 1 SFP+ port
- Dual power supply
- Includes SFP fiber to copper module
- \$745, available in April

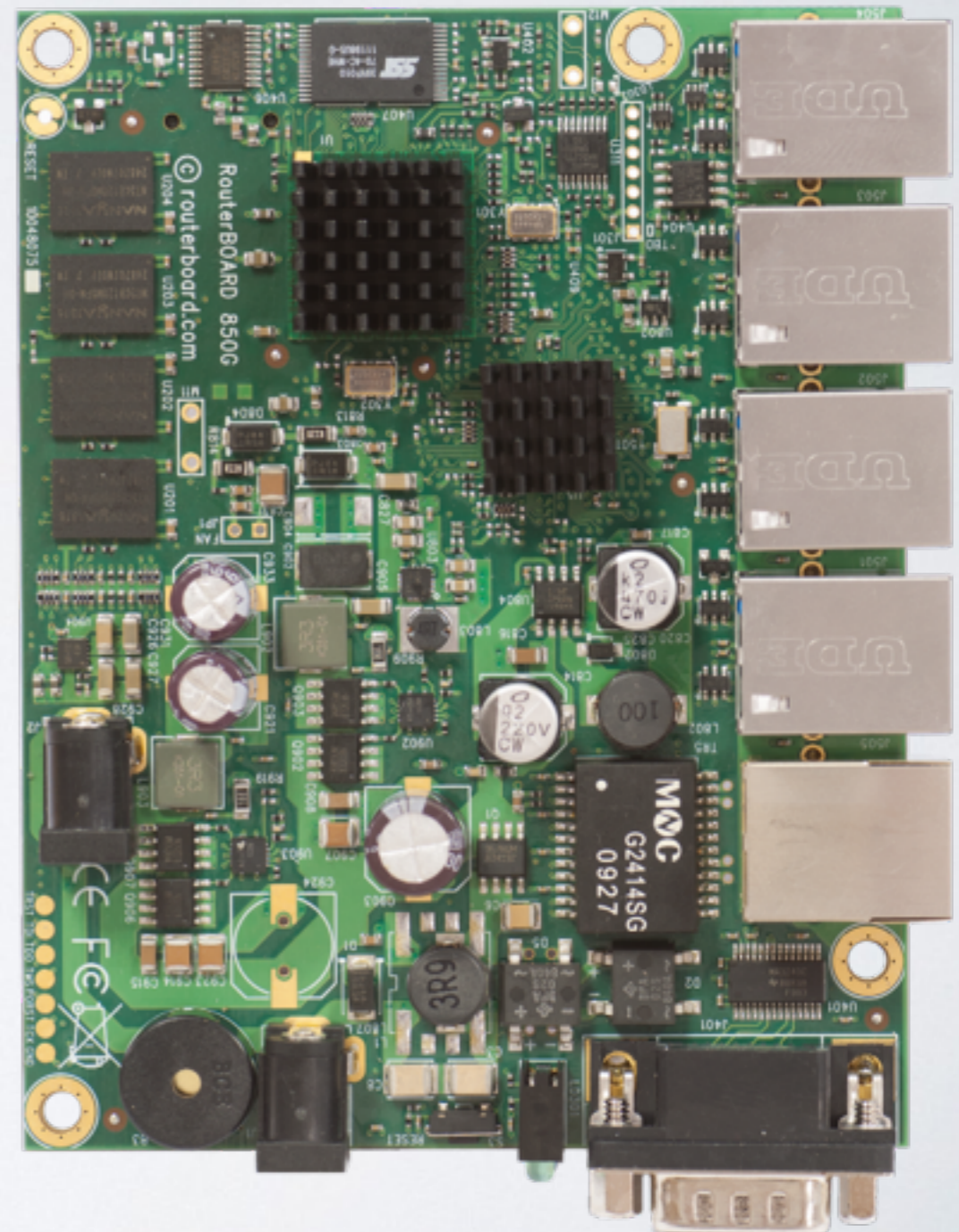
RB953GS-5HnT

- New Atheros “Scorpion” CPU
- 3 Gigabit Ethernet ports
- 2 SFP cages
- 3 chain 5GHz wireless
- 2 miniPCle slots and 2 SIM slots
- USB 2.0
- Available in April



RB850Gx2

- Dual core PPC
- New 500MHz CPU
- Same size as RB450G
- 512MB RAM
- Available in April
- \$129



mAP

- micro AP (or CPE)
- PoE injector 8-57V
- Built in 2GHz AP
- microUSB for modem, or for powering AP
- Any PoE in 802.3af and 802.3at
- Passive PoE output

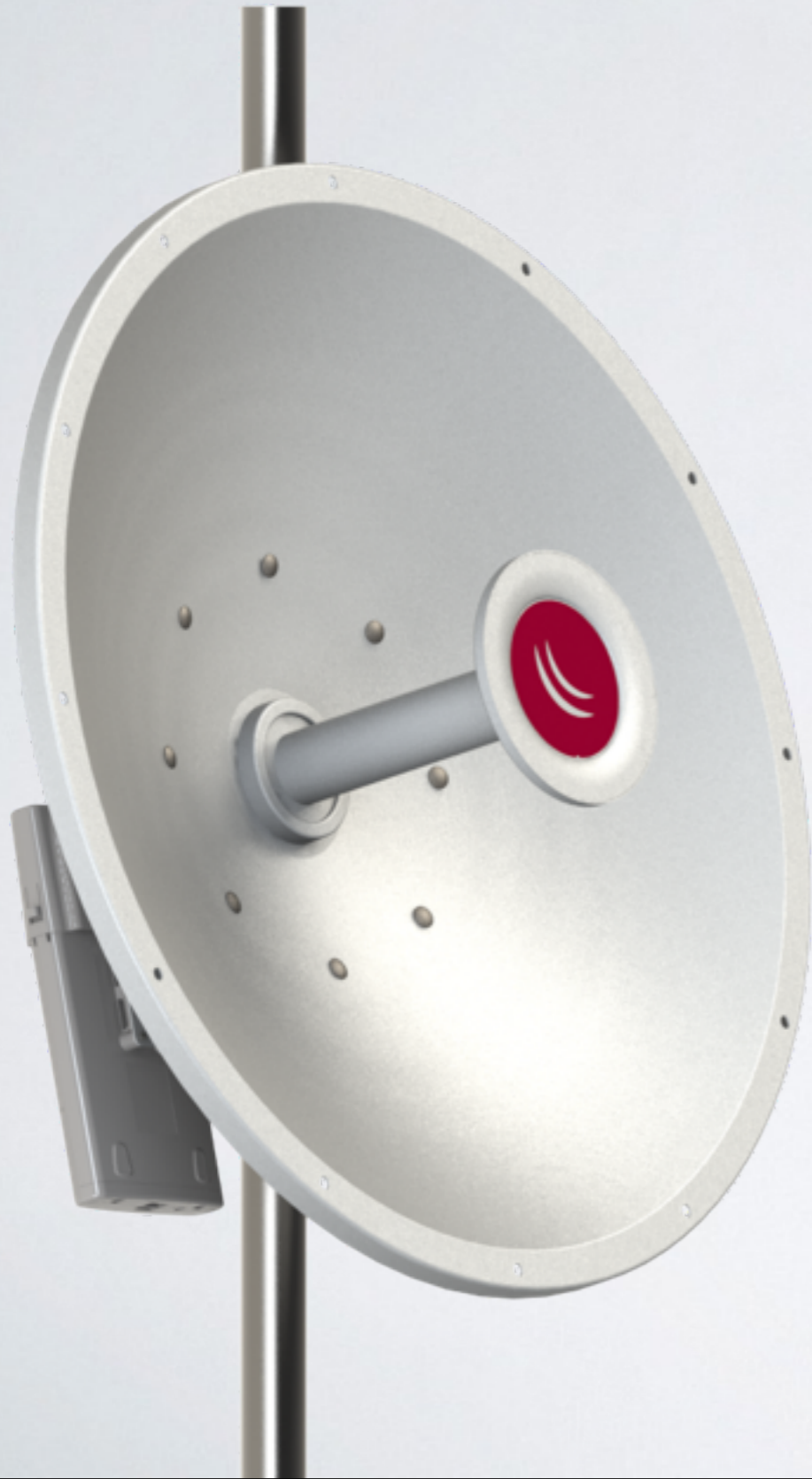


RB260GSP

- Switch with PoE out
- 5 Gigabit ports
- SwOS powered
- max 1A per port, 2A total
- \$55.95



MikroTik Antenna



- Parabolic dish
- Simple or Precise mounts
- Custom design
- \$119 and \$129





CCR1072

CCR1072

- 72 core Tiler CPU
- Dual failover power supplies
- Smart card
- Eight SFP+ ports
- 1 RJ45 Gigabit port
- 16GB of ECC RAM

CAPs Manager

- CAPs - Controlled Access Points system
- Wireless AP controller system
- Runs on any RouterBOARD
- Control all your AP devices in one place
- Quick deployment of large networks
- Works both with Layer 2 and Layer 3 connection between CAPs manager and your APs
- More information in our manual

admin@10.5.113.19 (BMR) - WinBox v6.11rc1 on CCR1036-12G-4S (tile)

Safe Mode Hide Passwords

- Quick Set
- CAPs Manager
- Interfaces
- Wireless
- Bridge
- PPP
- Mesh
- IP
- IPv6
- MPLS
- Routing
- System
- Queues
- Files
- Log
- Radius
- Tools
- New Terminal
- LCD
- Partition
- Make Supout.rif
- Manual
- Exit

CAPs Manager

Interfaces | Provisioning | **Configurations** | Channels | Datapaths | Security Cfg. | Access List | Remote CAP | Radio | Registration Table

Find

Name	SSID	Hide SSID	Channel	Frequency	Band	Datapath	Bridge	VLAN Mod
MT-test-2	MT-CAPS-2		mt-test-2n			mt-test-5n		
MT-test-5	MT-CAPS-5		mt-test-5n			mt-test-5n		

2 items (1 selected)

CAPs Configuration <MT-test-2>

Wireless | **Channel** | Datapath | Security

Channel: mt-test-2n

Frequency:

Width:

Band:

Extension Channel: Ce

OK | Cancel | Apply | Comment | Copy | Remove

CAPs Channel <mt-test-2n>

Name: mt-test-2n

Frequency: 2427 MHz

Width: 20 MHz

Band: 2ghz-onlyn

Extension Channel: disabled

OK | Cancel | Apply | Comment | Copy | Remove

Safe Mode

Hide Passwords

- Quick Set
- CAPs Manager
- Interfaces
- Wireless
- Bridge
- ppp
- Mesh
- IP
- IPv6
- MPLS
- Routing
- System
- Queues
- Files
- Log
- Radius
- Tools
- New Terminal
- LCD
- Partition
- Make Supout.rif
- Manual
- Exit

CAPs Manager

Interfaces Provisioning Configurations Channels Datapaths Security Cfg. Access List Remote CAP Radio Registration Table

Manager AAA

	Name	Type	MTU	L2 MTU	Tx	Rx	Tx Packet (p/s)	Rx Packet
SMB	cap1	Interfaces	1500	1600	0 bps	0 bps	0	
RSMB	cap2	Interfaces	1500	1600	1376 bps	424 bps	2	

2 items out of 19

Safe Mode

Hide Passwords

- Quick Set
- CAPs Manager
- Interfaces
- Wireless
- Bridge
- PPP
- Mesh
- IP
- IPv6
- MPLS
- Routing
- System
- Queues
- Files
- Log
- Radius
- Tools
- New Terminal
- LCD
- Partition
- Make Supout.rif
- Manual
- Exit

CAPs Manager

Interfaces Provisioning Configurations Channels Datapaths Security Cfg. Access List Remote CAP Radio Registration Table

Find

#	Radio MAC	Action	Master Configura...	Slave Configuration
0	00:00:00:00:00:00	create d...	MT-test-5	MT-test-2

1 item (1 selected)

CAPs Provisioning <00:00:00:00:00:00>

Radio MAC:

Action:

Master Configuration:

Slave Configuration:

Buttons: OK, Cancel, Apply, Disable, Comment, Copy, Remove

enabled

[http://wiki.mikrotik.com/wiki/
Manual:CAPs_Manager](http://wiki.mikrotik.com/wiki/Manual:CAPs_Manager)

CAPs manager

- Beta release soon
- Full release expected in some weeks time

Enjoy the MUM!