

PRESS RELEASE

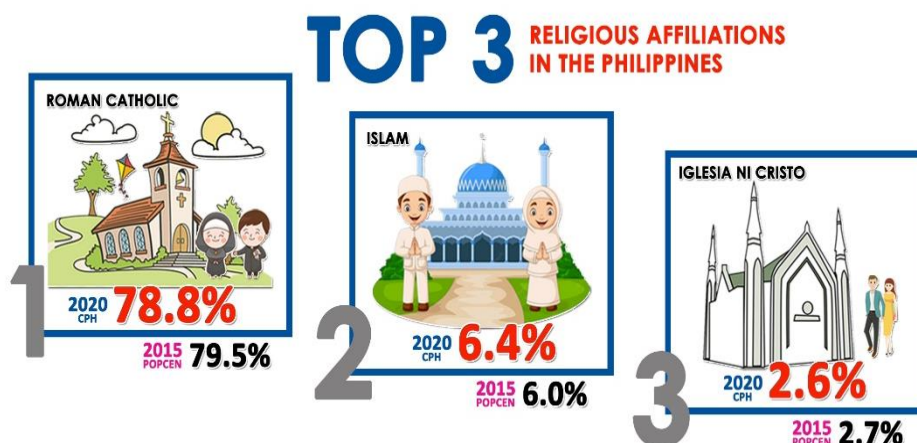
Religious Affiliation in the Philippines (2020 Census of Population and Housing)

Date of Release: 21 February 2023
Reference No. 2023-70

Roman Catholics account for 78.8 percent of the household population

1. Of the 108,667,043 household population in 2020, nearly four fifths or 85,645,362 persons (78.8%) reported Roman Catholic as their religious affiliation. It was followed by Islam with 6,981,710 persons (6.4%), and Iglesia ni Cristo with 2,806,524 persons (2.6%). In 2015, these were also the top three religious affiliations in the country. Completing the top ten religious affiliations in 2020 are Seventh Day Adventist, and Aglipay (0.8% each); Iglesia Filipina Independiente (0.6%); Bible Baptist Church (0.5%); and United Church of Christ in the Philippines, Jehovah's Witness, and Church of Christ (0.4% each). (Figure 1 and Table 1)

Figure 1. Top Three Religious Affiliations in the Philippines: 2015 and 2020



Sources: Philippine Statistics Authority, 2020 Census of Population and Housing and 2015 Census of Population

Table 1. Religious Affiliations in the Philippines: 2020

Religious Affiliation	Number	Percent	Rank
Philippines	108,667,043	100.0	
Roman Catholic*	85,645,362	78.8	1
Islam	6,981,710	6.4	2
Iglesia ni Cristo	2,806,524	2.6	3
Seventh Day Adventist	862,725	0.8	4
Aglipay	818,916	0.8	5
Iglesia Filipina Independiente	640,076	0.6	6
Bible Baptist Church	540,364	0.5	7
United Church of Christ in the Philippines	470,792	0.4	8
Jehovah's Witness	457,245	0.4	9
Church of Christ	429,921	0.4	10
Other religious affiliations	8,954,291	8.2	
None	43,931	0.0	
Not reported	15,186	0.0	

Note: *Excluding Catholic Charismatics numbering 74,096 persons (0.07%).

Source: Philippine Statistics Authority, 2020 Census of Population and Housing

Bicol Region has the highest proportion of household population with Roman Catholic as religion

- Of the 17 regions in the country, Region V - Bicol Region posted the highest proportion of Roman Catholics, comprising 93.5 percent of its household population. It was followed by Region VIII - Eastern Visayas with 92.3 percent, and Region VII - Central Visayas with 90.5 percent. Except for the Bangsamoro Autonomous Region in Muslim Mindanao (BARMM), which posted the lowest proportion of Roman Catholics at 5.3 percent, the proportion of Roman Catholics in the rest of the regions exceeded 50.0 percent – ranging from 54.1 percent in Region XII - SOCCSKSARGEN to 89.2 percent in Region IV-A - CALABARZON. (Table 2)

Table 2. Number and Proportion of the Household Population Who Reported Roman Catholic as Their Religious Affiliation by Region: Philippines, 2020

Region	Household Population	Roman Catholic	
		Number	Percent
Philippines	108,667,043	85,645,362	78.8
National Capital Region (NCR)	13,403,551	11,846,408	88.4
Cordillera Administrative Region (CAR)	1,791,121	1,106,409	61.8
I – Ilocos Region	5,292,297	4,338,887	82.0
II - Cagayan Valley	3,679,748	2,729,449	74.2
III - Central Luzon	12,387,811	10,529,269	85.0
IV-A - CALABARZON	16,139,770	14,390,095	89.2
MIMAROPA Region	3,212,287	2,330,206	72.5
V - Bicol Region	6,067,290	5,670,993	93.5
VI - Western Visayas	7,935,531	6,800,439	85.7
VII - Central Visayas	8,046,285	7,278,290	90.5
VIII - Eastern Visayas	4,531,512	4,183,529	92.3
IX - Zamboanga Peninsula	3,862,588	2,451,044	63.5
X - Northern Mindanao	5,007,798	3,599,614	71.9
XI - Davao Region	5,223,802	3,828,290	73.3
XII - SOCCSKSARGEN	4,351,773	2,352,437	54.1
XIII - Caraga	2,795,340	1,948,040	69.7
Bangsamoro Autonomous Region in Muslim Mindanao (BARMM)	4,938,539	261,963	5.3

Source: Philippine Statistics Authority, 2020 Census of Population and Housing

City of Mandaue posts the highest proportion of Roman Catholics among the highly urbanized cities

3. Among the 33 highly urbanized cities (HUCs), the City of Mandaue posted the highest proportion of household population who reported Roman Catholic as their religious affiliation with 343,621 persons or 95.2 percent of its 361,051 household population. It was followed by three other HUCs in the Visayas, namely: City of Cebu (94.7%), City of Tacloban (93.5%), and City of Lapu-Lapu (93.2%). Completing the top ten HUCs with the highest proportion of Roman Catholics are four HUCs in the National Capital Region (NCR), namely the cities of Navotas, Parañaque, Las Piñas, and Malabon; the City of Lucena in CALABARZON; and the City of Iloilo in Western Visayas. (Table 3)

Table 3. Top Ten Highly Urbanized Cities with the Highest Proportion of Household Population Who Reported Roman Catholic as Their Religious Affiliation: 2020

Rank	Highly Urbanized City	Household Population	Roman Catholic	
			Number	Percent
1	City of Mandaue	361,051	343,621	95.2
2	City of Cebu	958,626	907,910	94.7
3	City of Tacloban	249,415	233,194	93.5
4	City of Lapu-Lapu (Opon)	494,672	461,067	93.2
5	City of Navotas	246,743	226,106	91.6
6	City of Parañaque	686,313	628,364	91.6
7	City of Lucena	278,347	254,166	91.3
8	City of Las Piñas	604,283	550,900	91.2
9	City of Malabon	379,463	343,251	90.5
10	City of Iloilo	455,287	409,906	90.0

Source: Philippine Statistics Authority, 2020 Census of Population and Housing

Albay leads the provinces with the highest proportion of Roman Catholics

4. Among the provinces in the country, Albay had the highest proportion of household population who reported Roman Catholic as their religious affiliation with 1.32 million persons or 96.2 percent of the 1.37 million household population in the province. It was followed by Catanduanes (95.6%) and Eastern Samar (95.3%). Fourteen other provinces posted proportions higher than 90.0 percent. (Table 4)
5. In terms of number, the top three provinces with the highest number of Roman Catholics were Cebu (excluding its three HUCs) with 3.14 million persons, Batangas with 2.72 million persons, and Camarines Sur with 1.92 million persons. (Table 4)

Table 4. Provinces with at Least 90.0 Percent of the Household Population Who Reported Roman Catholic as Their Religious Affiliation: 2020

Province	Household Population	Roman Catholic		
		Number	Percent	Rank
Albay	1,372,550	1,320,194	96.2	1
Catanduanes	270,775	258,818	95.6	2
Eastern Samar	475,847	453,265	95.3	3
Cebu*	3,309,850	3,139,089	94.8	4
Sorsogon	826,150	776,911	94.0	5
Siquijor	103,014	96,810	94.0	6
Batangas	2,902,855	2,720,940	93.7	7
Samar (Western Samar)	791,045	741,374	93.7	8
Capiz	803,879	753,392	93.7	9
Northern Samar	636,995	595,375	93.5	10
Camarines Sur	2,062,277	1,921,306	93.2	11
Camarines Norte	628,807	583,793	92.8	12
Camiguin	92,696	85,945	92.7	13
Leyte*	1,771,011	1,640,765	92.6	14
Batanes	18,593	17,092	91.9	15
Quezon*	1,945,444	1,784,564	91.7	16
Bohol	1,390,524	1,254,973	90.3	17

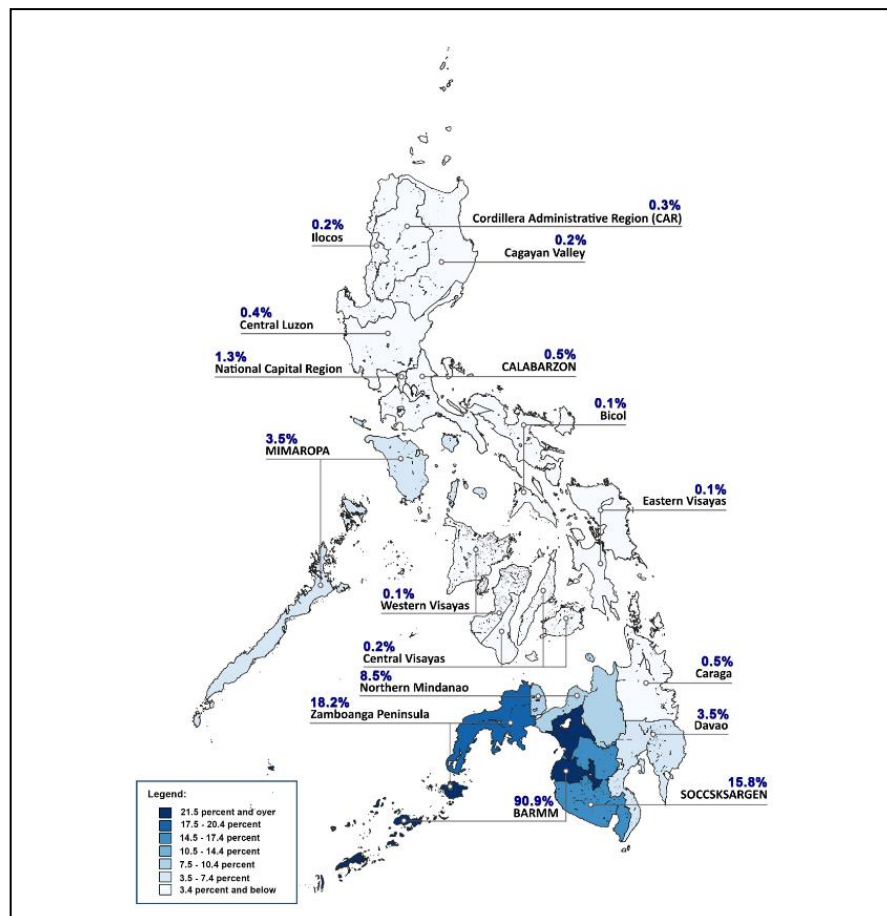
Note: *Excluding Highly Urbanized City/cities

Source: Philippine Statistics Authority, 2020 Census of Population and Housing

About 91 in every 100 residents in BARMM have Islam as religion

- Islam was the most predominant religion in BARMM, accounting for 4.49 million persons or 90.9 percent of the 4.94 million household population in the region. It was followed by Region IX - Zamboanga Peninsula with 18.2 percent, SOCCSKSARGEN with 15.8 percent, Region X - Northern Mindanao with 8.5 percent, and Region XI - Davao Region and MIMAROPA Region with 3.5 percent each. On the other hand, Region XIII - Caraga, which is also in Mindanao, registered a proportion of Islam of only 0.5 percent. The rest of the regions posted proportions ranging from 0.1 percent each in Bicol and Region VI - Western Visayas to 1.3 percent in the NCR. (Figure 2 and Table 5)

Figure 2. Proportion of the Household Population Who Reported Islam as Their Religious Affiliation by Region: Philippines, 2020



Source: Philippine Statistics Authority, 2020 Census of Population and Housing

Table 5. Number and Proportion of the Household Population Who Reported Islam as Their Religious Affiliation by Region: Philippines, 2020

Region	Household Population	Islam	
		Number	Percent
Philippines	108,667,043	6,981,710	6.4
National Capital Region (NCR)	13,403,551	173,346	1.3
Cordillera Administrative Region (CAR)	1,791,121	5,817	0.3
I – Ilocos Region	5,292,297	12,475	0.2
II - Cagayan Valley	3,679,748	7,249	0.2
III - Central Luzon	12,387,811	46,588	0.4
IV-A - CALABARZON	16,139,770	80,057	0.5
MIMAROPA Region	3,212,287	113,288	3.5
V – Bicol Region	6,067,290	9,090	0.1
VI - Western Visayas	7,935,531	9,784	0.1
VII - Central Visayas	8,046,285	16,412	0.2
VIII - Eastern Visayas	4,531,512	5,568	0.1
IX - Zamboanga Peninsula	3,862,588	703,823	18.2
X - Northern Mindanao	5,007,798	423,317	8.5
XI - Davao Region	5,223,802	185,248	3.5
XII - SOCCSKSARGEN	4,351,773	685,702	15.8
XIII - Caraga	2,795,340	12,777	0.5
Bangsamoro Autonomous Region in Muslim Mindanao (BARMM)	4,938,539	4,491,169	90.9

Tawi-Tawi has the highest proportion of Islam among the provinces

7. Of all the provinces in the country, Tawi-Tawi registered the highest proportion of the household population who reported Islam as their religion with 426,403 persons or 97.2 percent of the 438,545 household population in the province. All the other provinces in BARMM registered proportions higher than 89.0 percent, namely: Interim province in BARMM with 96.3 percent; Sulu with 95.2 percent; Lanao del Sur with 94.7 percent; Basilan with 89.9 percent, and Maguindanao with 83.5 percent. (Table 6)
8. Moreover, five other provinces in Mindanao (Lanao del Norte, Sultan Kudarat, Cotabato, Zamboanga Sibugay, and Sarangani) and one province in the MIMAROPA Region (Palawan) posted double-digit proportion of the household population who reported Islam as their religious affiliation. (Table 6)

Table 6. Provinces with Double-Digit Proportion of Household Population Who Reported Islam as Their Religious Affiliation: 2020

Rank	Province	Household Population	Islam	
			Number	Percent
1	Tawi-Tawi	438,545	426,403	97.2
2	Interim Province ¹	215,348	207,464	96.3
3	Sulu	998,675	951,127	95.2
4	Lanao del Sur	1,194,507	1,131,726	94.7
5	Basilan ²	425,111	382,242	89.9
6	Maguindanao ³	1,666,353	1,392,207	83.5
7	Lanao del Norte	721,716	328,468	45.5
8	Sultan Kudarat	851,554	257,723	30.3
9	Cotabato (North Cotabato)	1,273,594	246,006	19.3
10	Zamboanga Sibugay	668,648	106,587	15.9
11	Sarangani	558,069	61,529	11.0
12	Palawan ⁴	934,669	101,235	10.8

Notes:

¹A Special Geographic Area in BARMM formed as an Interim Province, composed of 63 barangays, which were previously from six municipalities in the province of Cotabato in Region XII -SOCCSKSARGEN

²Excluding the City of Isabela, which is under the administrative supervision of Region IX-Zamboanga Peninsula

³Including the City of Cotabato

⁴Excluding the City of Puerto Princesa

Source: Philippine Statistics Authority, 2020 Census of Population and Housing

The statistics presented in this Press Release were based on the information provided by the respondent pertaining to all members of the household.

In the 2020 Census of Population and Housing, data on the Religious Affiliation of all household members were collected by asking the respondent, “*What is _____’s religious affiliation?*”.

DENNIS S. MAPA, Ph.D.

Undersecretary

National Statistician and Civil Registrar General

MEPE/FCV/JPC/RML/FJRA