



ON THE DANFORTH BUSINESS IMPROVEMENT AREA ALEXANDER THE GREAT PARKETTE

Concept Design

November 16, 2022



CONCEPT: PERISTYLE COLONNADE

Plan framework

The design is inspired by the golden ratio, originally described by the Greek mathematician Euclid, to organize and size the elements on the site. The frontage at the street is opened up. The existing stage and colonnade at the north end are replaced with a round stage and a sweeping peristyle colonnade. The colonnade defines the edge of the parkette while allowing visitors to pass through. The resultant space is framed, open and multi-functional for events or everyday use. New benches line the perimeter with views to the plaza while defining the patio space behind. A continuous tree trench supports the curving row of existing trees. Paving patterns define the various areas with traditional Greek patterns, including the performance space and the fountain area that is now focused towards the street and enclosed by the colonnade.

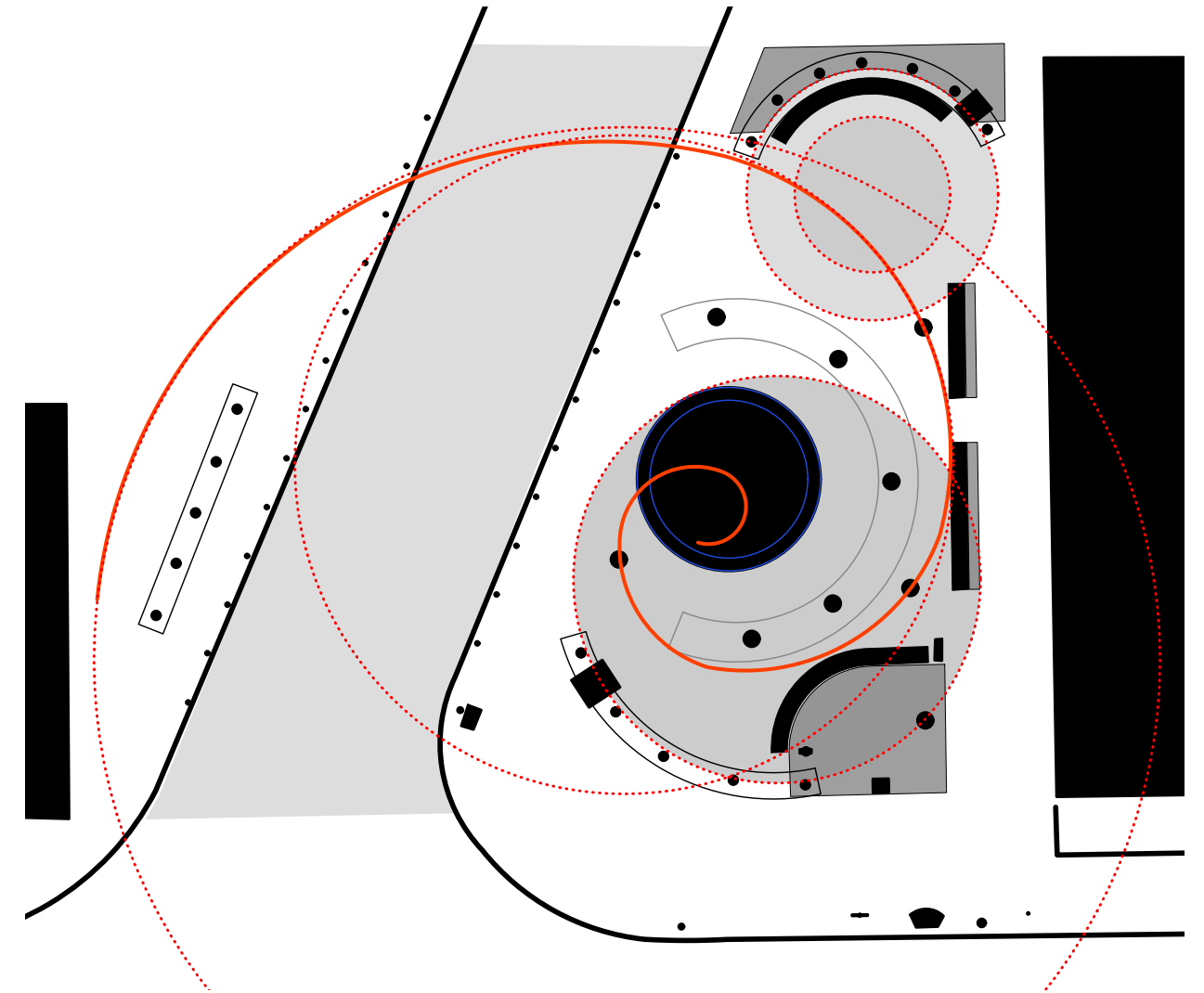
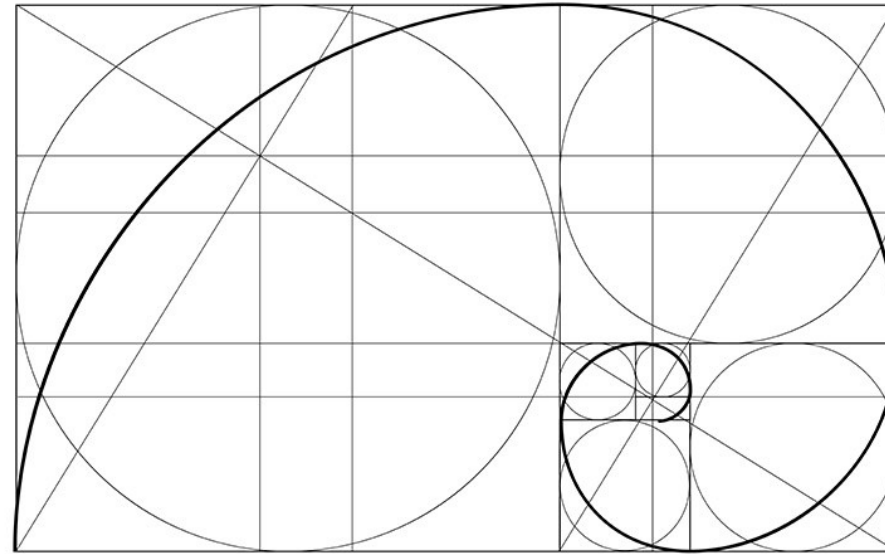


Figure ground: proposed and reorganized elements

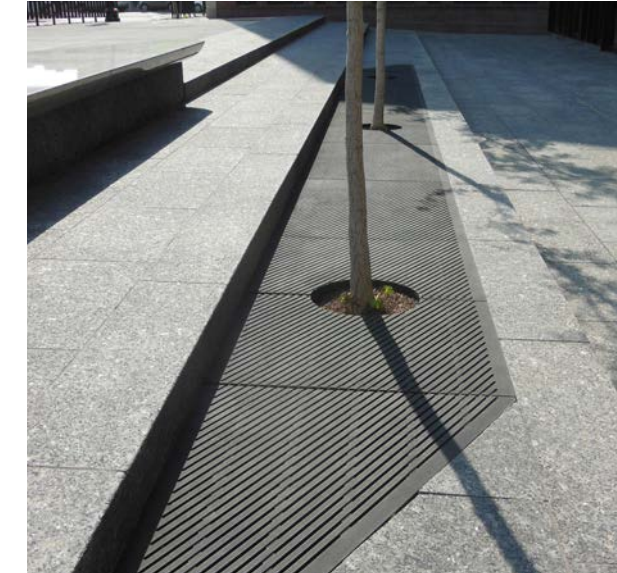


CONCEPT: PERISTYLE COLONNADE

Inspiration and precedent images



Concrete colonnade extends the existing colonnade to become a framing element to the north and south of the parkette, defining the space while allowing open and flexible gathering within.



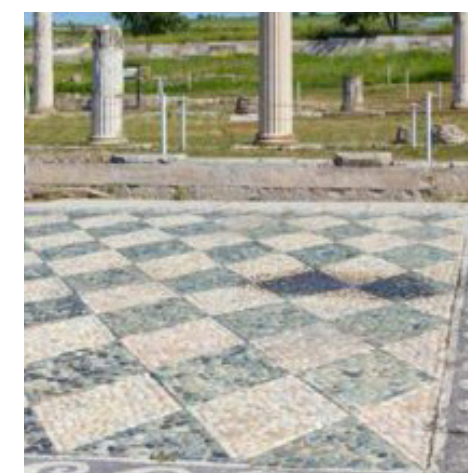
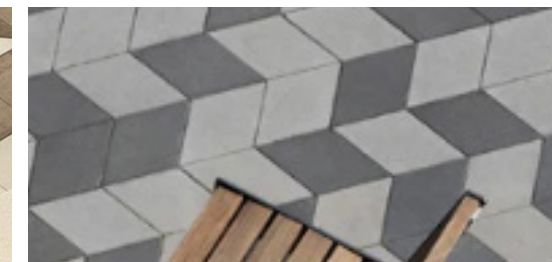
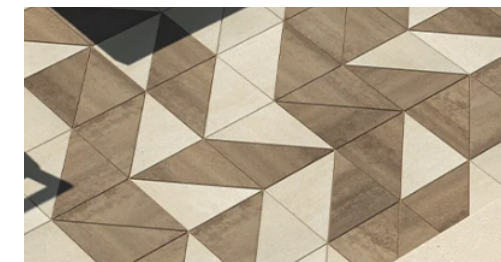
A continuous tree grate will allow the existing tree roots to have access to more protected soil while create a unique feature that reveals flexible open space.



A new stainless steel centre piece feature flying fish will adorn the centre bowl of the fountain. An artist will be retained to develop a design and implement the centre piece.



Benches flank the east side of the plaza reinforcing the edge with an abundance of seating with views of the plaza.



Traditional Greek paving patterns are extended through the site using durable locally-manufactured concrete pavers.



Forest and Field
Landscape Architecture Inc.



CONCEPT: PERISTYLE COLONNADE

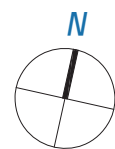
Plan

Elements

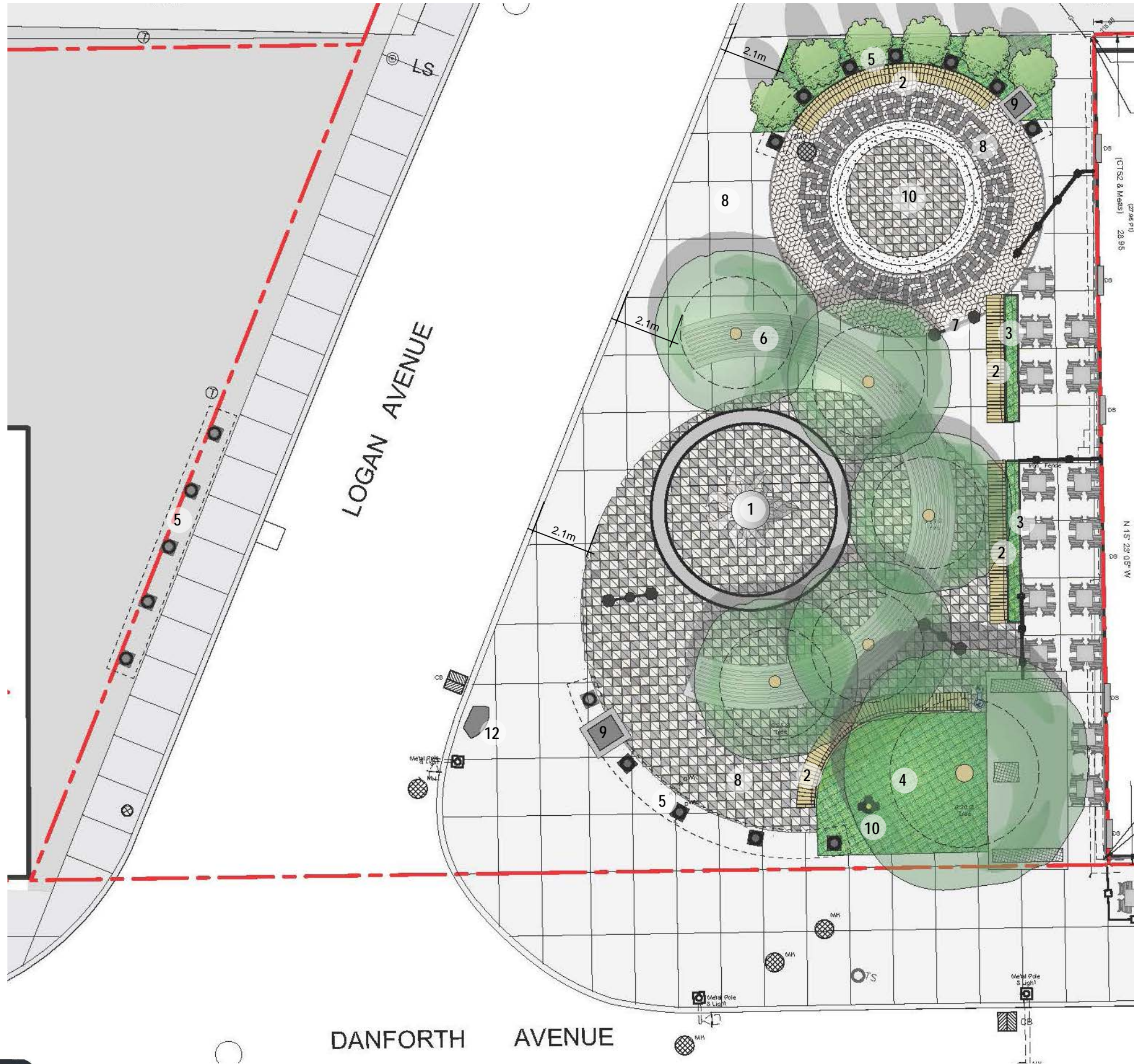
- 1 Refurbished fountain with new fountain centrepiece: the existing fountain will be refurbished with new tiles with ancient Greek motifs inside and out, new pump equipment, waterproofing and lights as well as a flying fish sculpture.
- 2 New wooden seating with steel legs: AODA-compliant wood benches are modern and comfortable in all seasons. The benches flank the planting and patio areas and maximize views of the parkette space while leaving the space open for events.
- 3 Raised steel planters: the long narrow planters act as a fence at the restaurant patio and provide a planting buffer between the plaza and the patio seating.
- 4 Reoriented planting areas: new annual planting areas are oriented to align with the curves throughout the parkette, opening a clear and welcoming view to the Danforth.
- 5 Extended colonnade: The much-loved colonnade is recreated to frame the north and south end of the site, with an extended section of the colonnade on the west side of Logan Ave.
- 6 Existing trees: Two existing trees are removed to create an open space at the Danforth Avenue entrance to the parkette.

The remaining existing trees are given a large trench of soil under a continuous tree grate, creating more open space and healthier growing conditions for the trees.

- 7 Lighting: Relocate and retrofit existing lighting with new LED fixtures and replacing odd fixtures with BIA poles.
- 8 Concrete paver pattern and concrete walkways: Greek key pattern forms the outline of a Greek-theatre-inspired gathering area/ stage, while feature areas are accentuated by Greek black and white unit pavers. The remainder of the site will feature architectural saw-cut concrete paving.
- 9 Existing bust and statue of Alexander the Great: placed to be central to the site and aligned with each other and the fountain from within the proposed colonnade.
- 10 Raised stage: the new stage is circular and placed centrally with steps all the way around. It will be used to host performances and events and offers an abundance of casual seating.
- 11 Relocated fire hydrant
- 12 New garbage bin



scale 1:150



Looking north



Looking south

