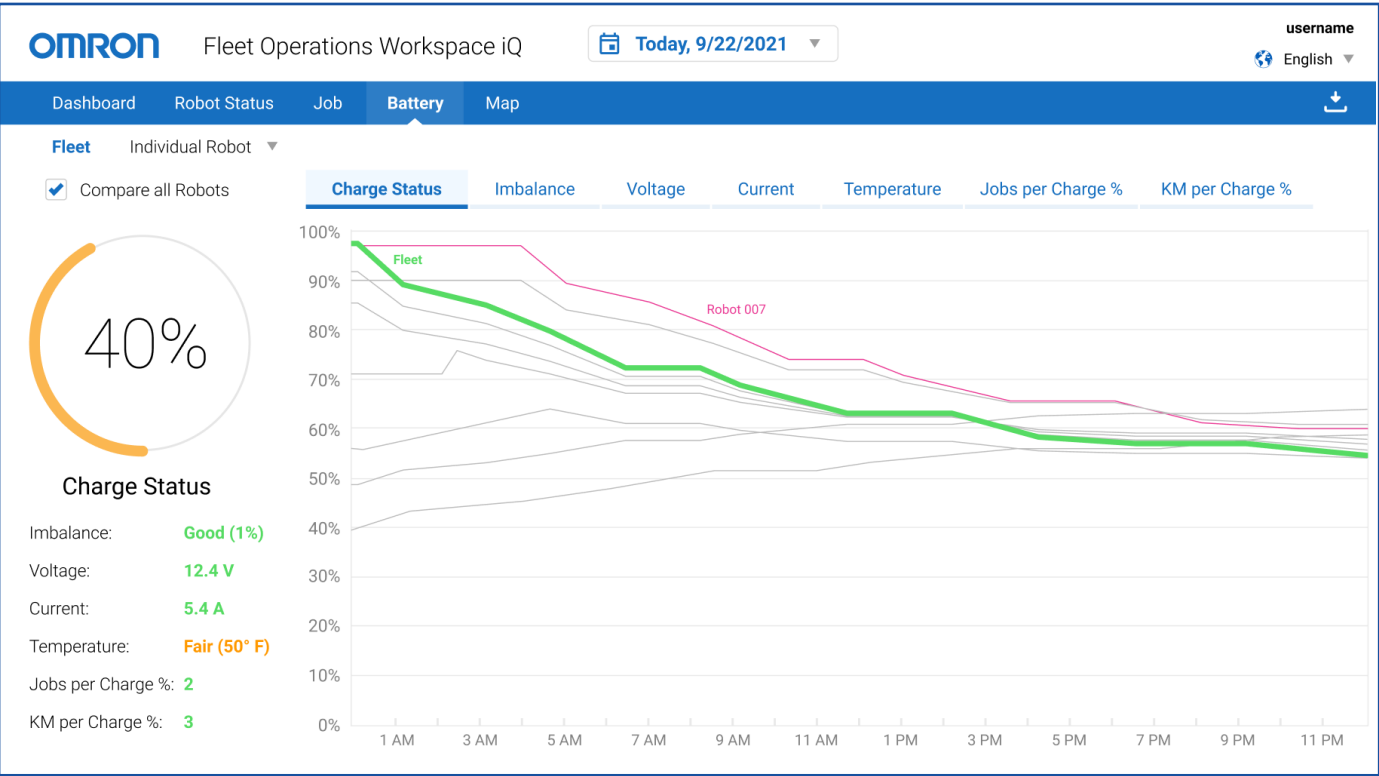
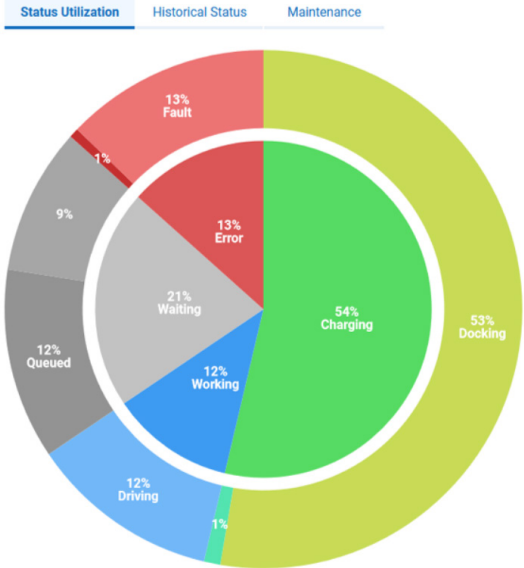


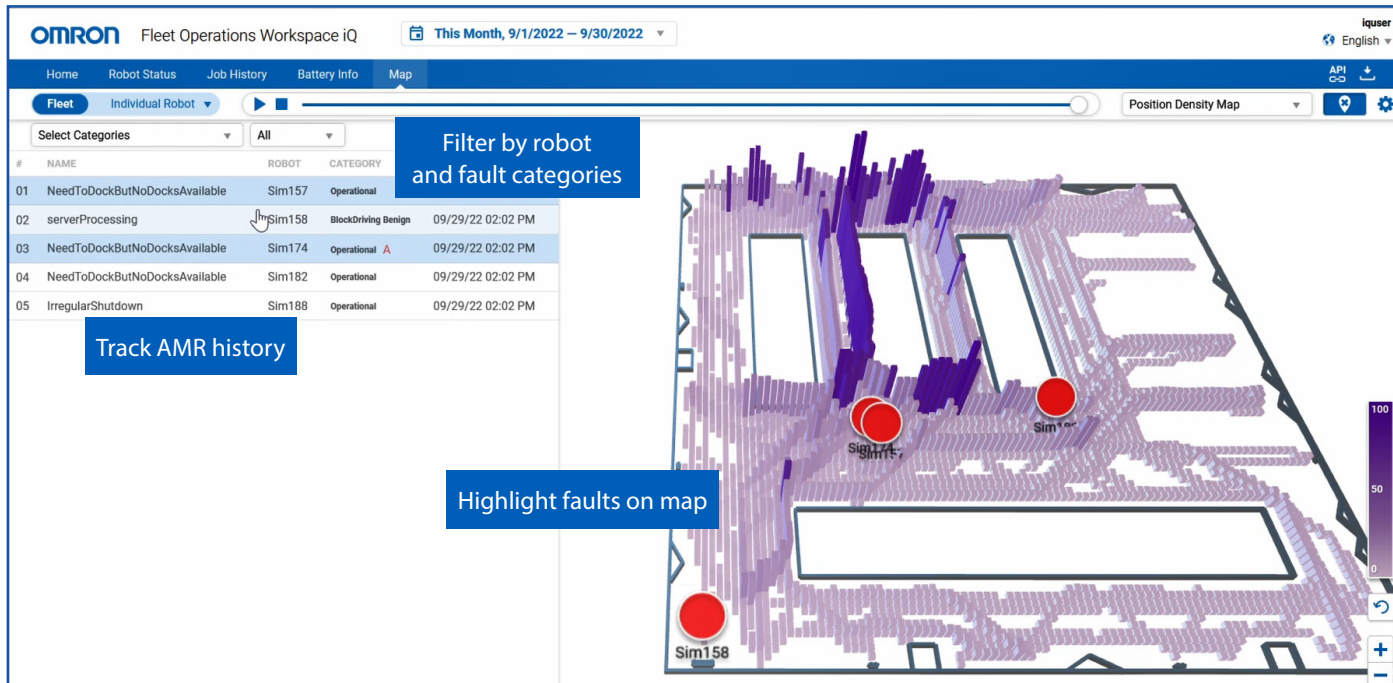
## OMRON's first fleet analytics engine for application performance and health tracking



Enhances the core user experience with powerful data collection and analytics through an intuitive user interface

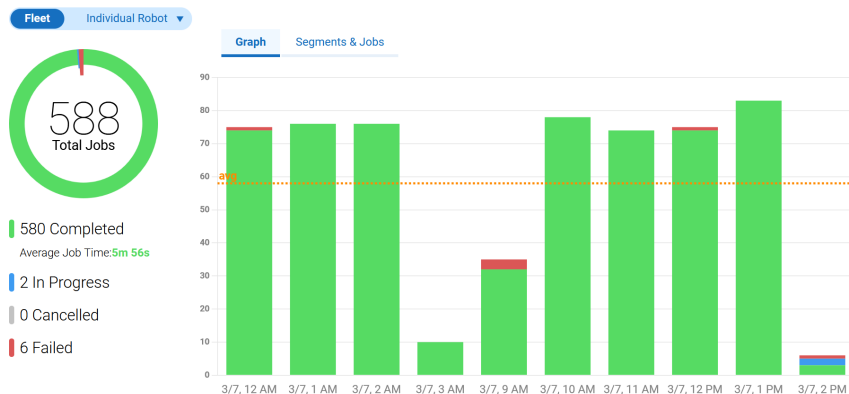
FLOW iQ provides the visualization tools to generate graphics on the fly, and the intelligence to maximize application uptime and lifetime by accelerating failure resolution through giving operators the tools to maintain 24/7 production.





## Key Benefits

- Quickly view how many robots are working, charging, waiting or reporting an error
- Visualize the performance of the fleet with flexible job statistics
- Examine the wireless quality map data to pinpoint network weak spots
- Track and maintain AMR and battery health with intelligent fault and battery tracking
- Tailor fleet traffic with localization and position heat maps to maximize cycle time



**OMRON Corporation** Industrial Automation Company  
Kyoto, JAPAN

Contact: [www.ia.omron.com](http://www.ia.omron.com)

### Regional Headquarters

**OMRON EUROPE B.V.**  
Wiegalaan 67-69, 2132 JD Hoofddorp  
The Netherlands  
Tel: (31)2356-81-300/Fax: (31)2356-81-388

**OMRON ASIA PACIFIC PTE. LTD.**  
No. 438A Alexandra Road # 05-05/08 (Lobby 2),  
Alexandra Technopark,  
Singapore 119967  
Tel: (65) 6835-3011/Fax: (65) 6835-2711

**OMRON ELECTRONICS LLC**  
2895 Greenspoint Parkway, Suite 200 Hoffman Estates,  
IL 60169 U.S.A.  
Tel: (1) 847-843-7900/Fax: (1) 847-843-7787

**OMRON ROBOTICS AND SAFETY TECHNOLOGIES, INC.**  
4225 Hacienda Dr., Pleasanton, CA 94588 U.S.A.  
Tel: (1) 925-245-3400/Fax: (1) 925-960-0590

**OMRON (CHINA) CO., LTD.**  
Room 2211, Bank of China Tower, 200 Yin Cheng Zhong Road,  
PuDong New Area, Shanghai, 200120, China  
Tel: (86) 21-5037-2222/Fax: (86) 21-5037-2200

**Authorized Distributor:**

© OMRON Corporation 2022 All Rights Reserved.  
In the interest of product improvement,  
specifications are subject to change without notice.

Cat. No. 1872-E-03

1022(0621)