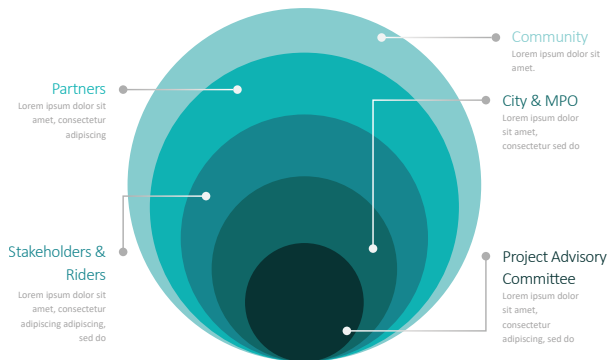


Cheyenne Transit Program

2022 TRANSIT DEVELOPMENT PLAN

Cheyenne is a growing community with lots of new development, and with that comes an expectation for efficient and easy-to-use transit. There is increasing community interest in transit. The Cheyenne Transit Program (CTP) is starting to move more people, and riders want the freedom to go out and about again and interact with their neighbors and community. The pandemic has been challenging, but it is important to plan beyond COVID-19. This plan is important to determine how CTP can provide the best possible service with the available resources.

Involvement



The **2022 Transit Development Plan**, led by the City of Cheyenne and the Cheyenne Metropolitan Planning Origination (CMPO), provides an opportunity to examine changes in the community, including the impacts of the COVID-19 pandemic, and find ways to serve the community's transit needs better. The plan emphasizes the efficient use of available resources, recognizes funding limitations and potential new funding sources, incorporates new concepts for transit service delivery, and provides flexibility for implementation. This plan evaluates current and future transportation needs and the possibility of increased transit service options. A summary of the issues, the process, and transit service scenarios are presented below, with details in the plan itself.

Goals



Develop a renewed vision that creates new enthusiasm for public transportation.



Grow ridership and improve overall efficiency and cost-effectiveness.



Improve speed of service delivery.



Build upon existing microtransit successes.



Deliver near-, short-, and long-term recommendations with an eye towards practical, flexible, and implementable solutions.



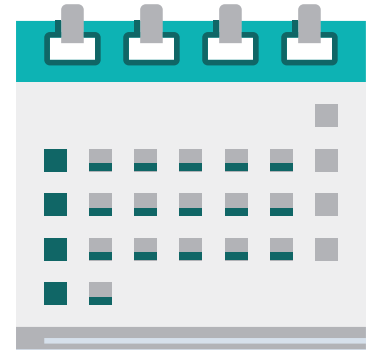
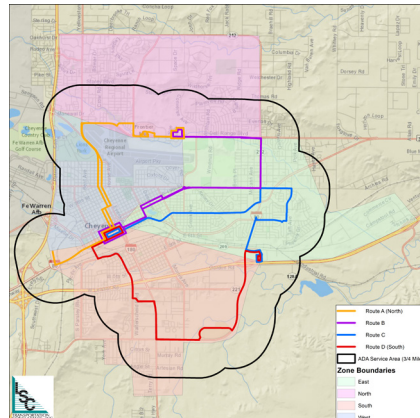
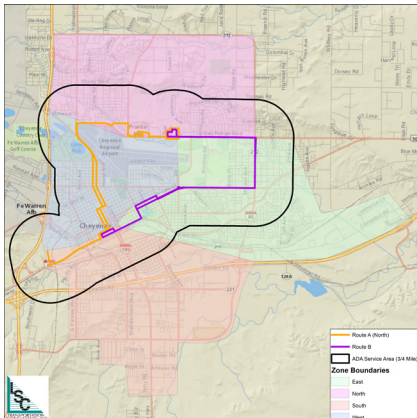
Engage the entire community, including underrepresented populations, in the planning process.



Detail infrastructure and capital needs.



Recommended Phased Service



Evenings & Sunday Service



Phase 1

Fixed-Route & Microtransit

- The recommended plan combines fixed route service and microtransit, restoring fixed-route service in phases.
- The routes are similar to previous routes, with modifications to better service identified demand and improve operational efficiency



Phase 2

More Fixed-Routes

- Adds two additional routes, Route C (Blue), to serve the east Walmart and Route D (Red) to serve the area south of I-80
- Each of the four fixed routes will operate hourly service and microtransit will continue to cover the areas outside the fixed-route coverage.
- Complementary paratransit will be extended to the areas served by Routes C and D



Phase 3

Extends Service

- Extends service later in the evening and on Sundays via microtransit
- Microtransit system would provide all evening and Sunday service
- Complementary paratransit service operates during the same time as fixed-route service (until 6:00 pm on weekdays and no service on Sundays)
- Complementary paratransit service outside the service hours of the fixed-route service

Recommended Fares

Fares

Fixed-Route & Microtransit

Regular Cash Fare	\$1.00
Youth 6 to 16	Free
Children 5 and under <i>(accompanied by an adult)</i>	Free
Seniors (60 and over)	Free
Complementary Paratransit	\$2.00
Half-fare pass program: • Persons with Disabilities • Veterans with Disabilities	\$0.50

Passes

Valid on fixed-route & microtransit service only

31-Day Pass	\$33.00
College Student 31-Day Pass	\$25.00
22-Ride Punch Pass	\$16.00

