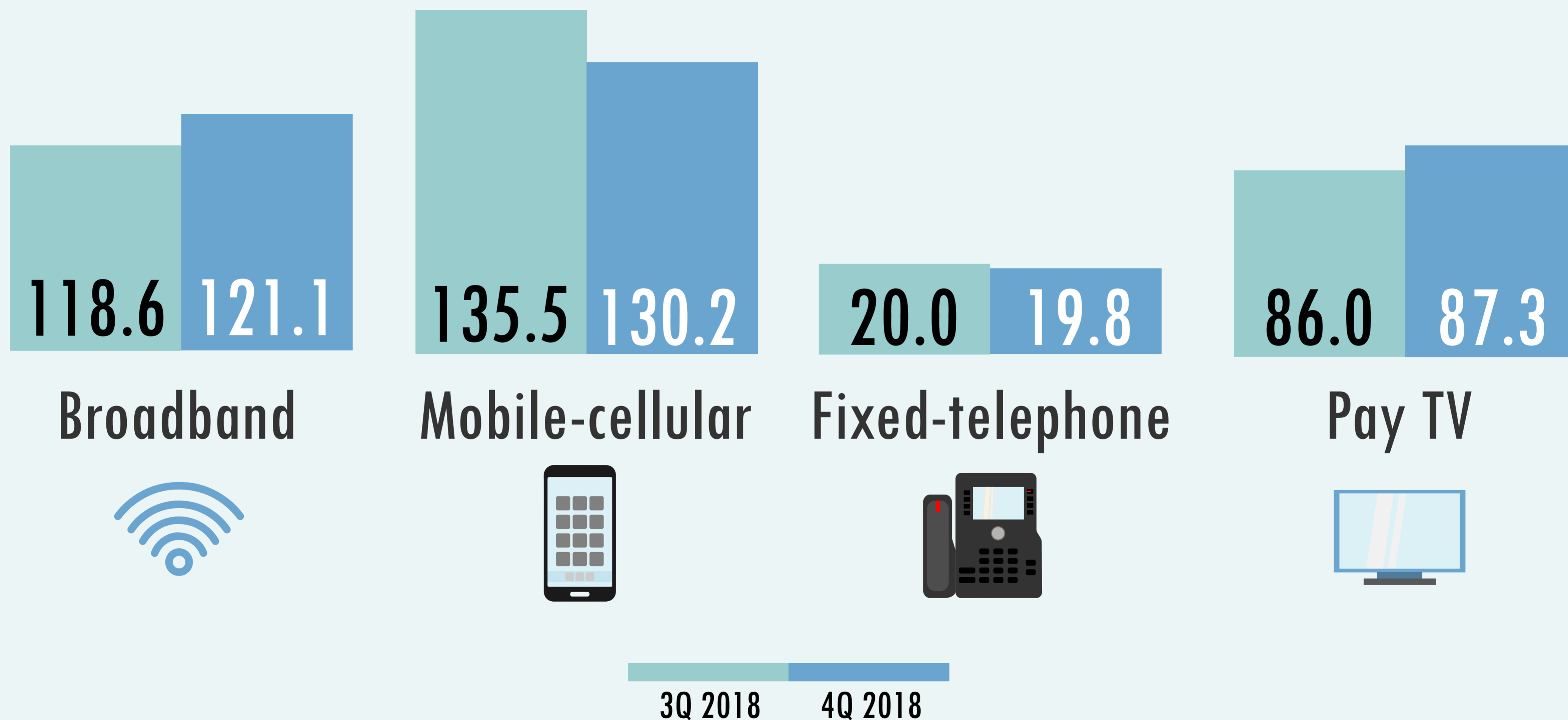


4Q 2018

COMMUNICATIONS & MULTIMEDIA Facts & Figures

Penetration Rates (%)



Note:

- Broadband, Mobile-cellular and Fixed-telephone refer to penetration rate per 100 inhabitants
- Pay TV refers to penetration rate per 100 households

Broadband

2.7 million

Fixed-broadband subscriptions

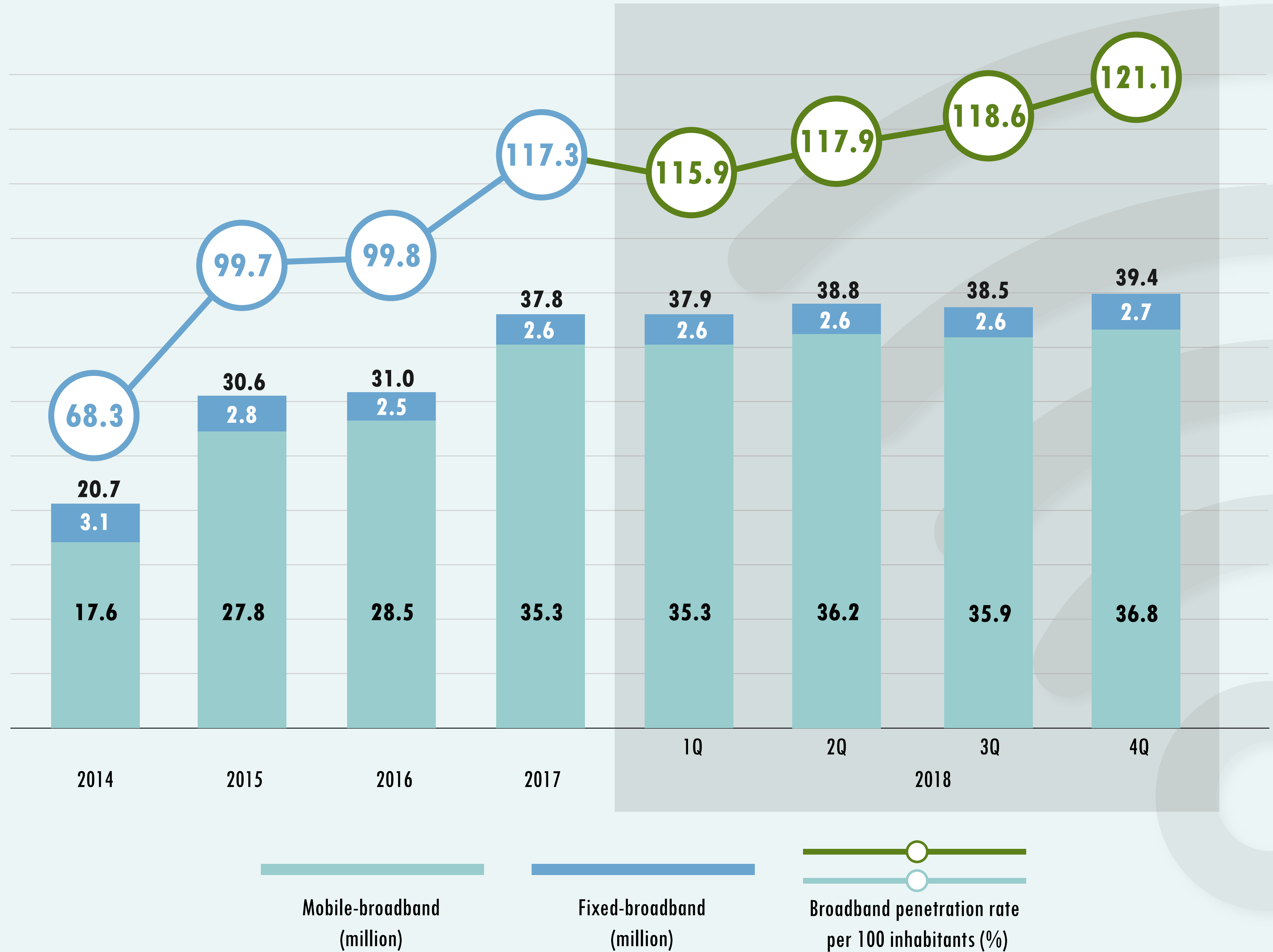
3Q 2018: 2.6 million

36.8 million

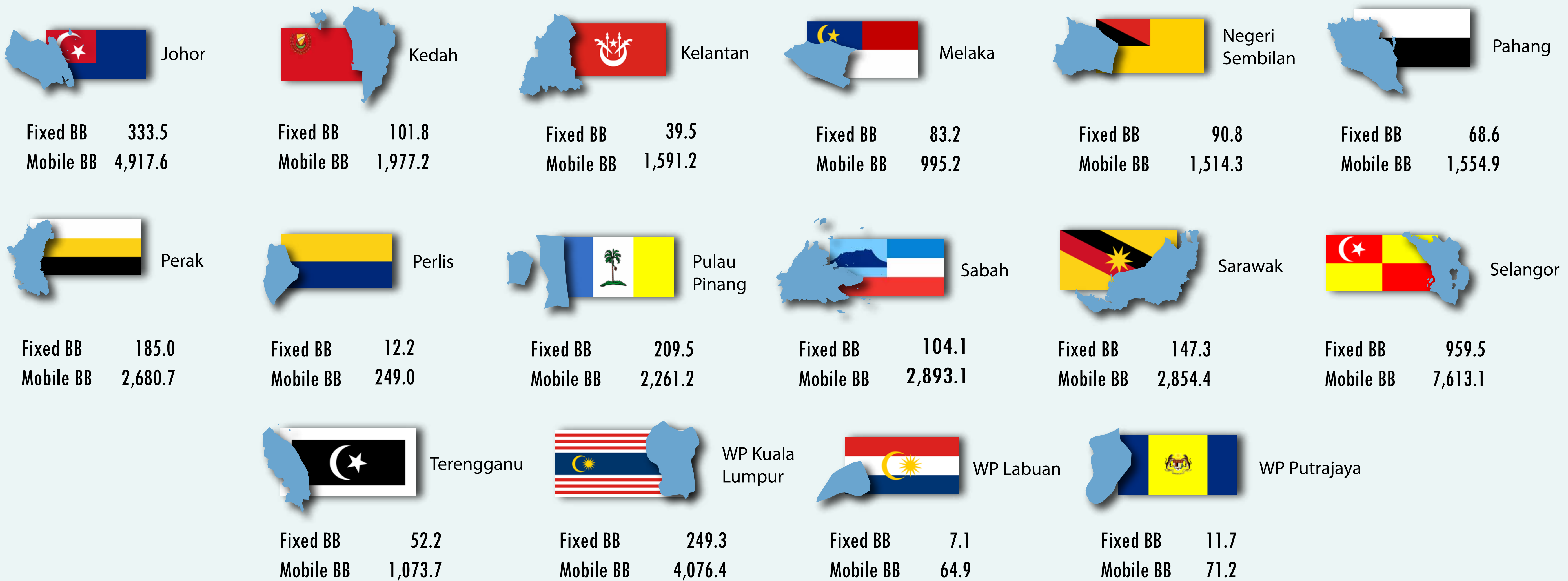
Mobile-broadband subscriptions

3Q 2018: 35.9 million

Subscriptions and penetration rate per 100 inhabitants (%)



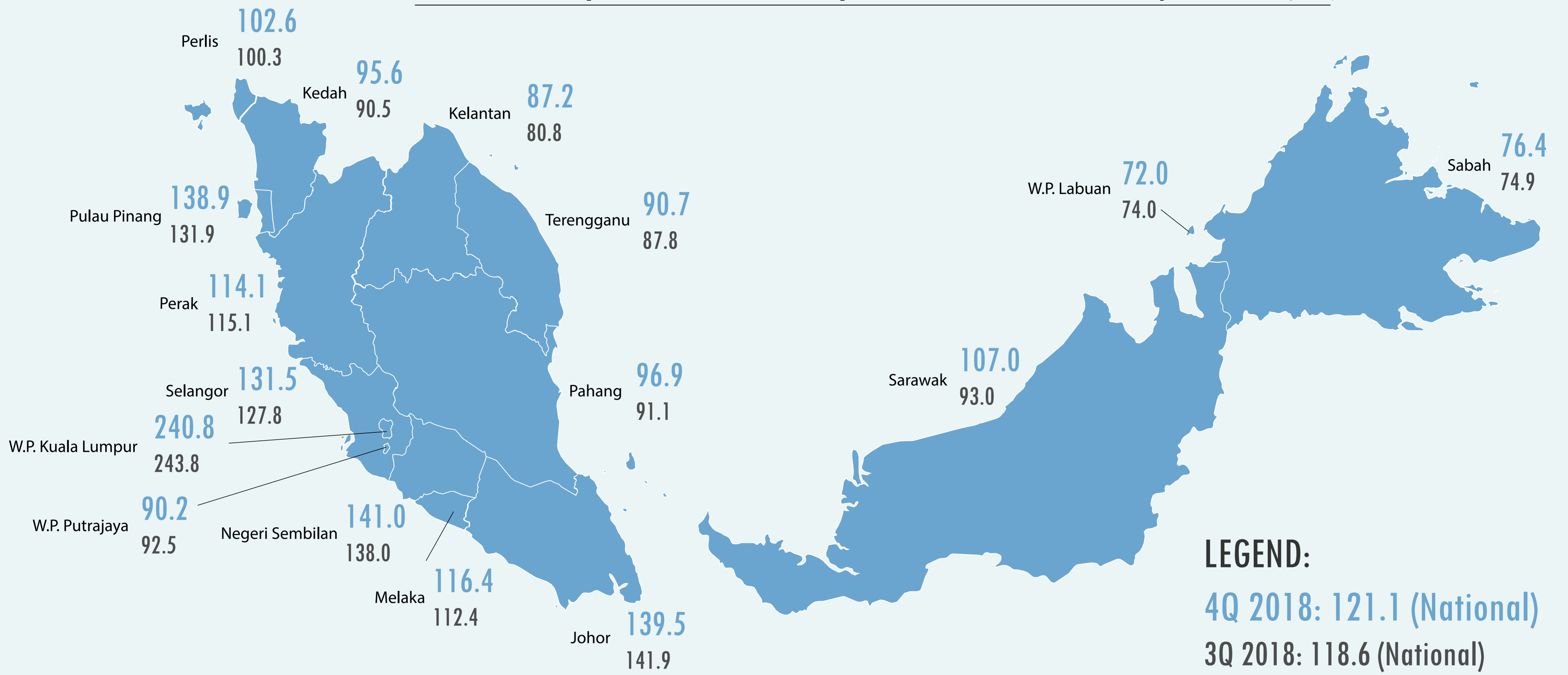
Broadband subscriptions by states ('000)



Note: Fixed BB = Fixed-broadband

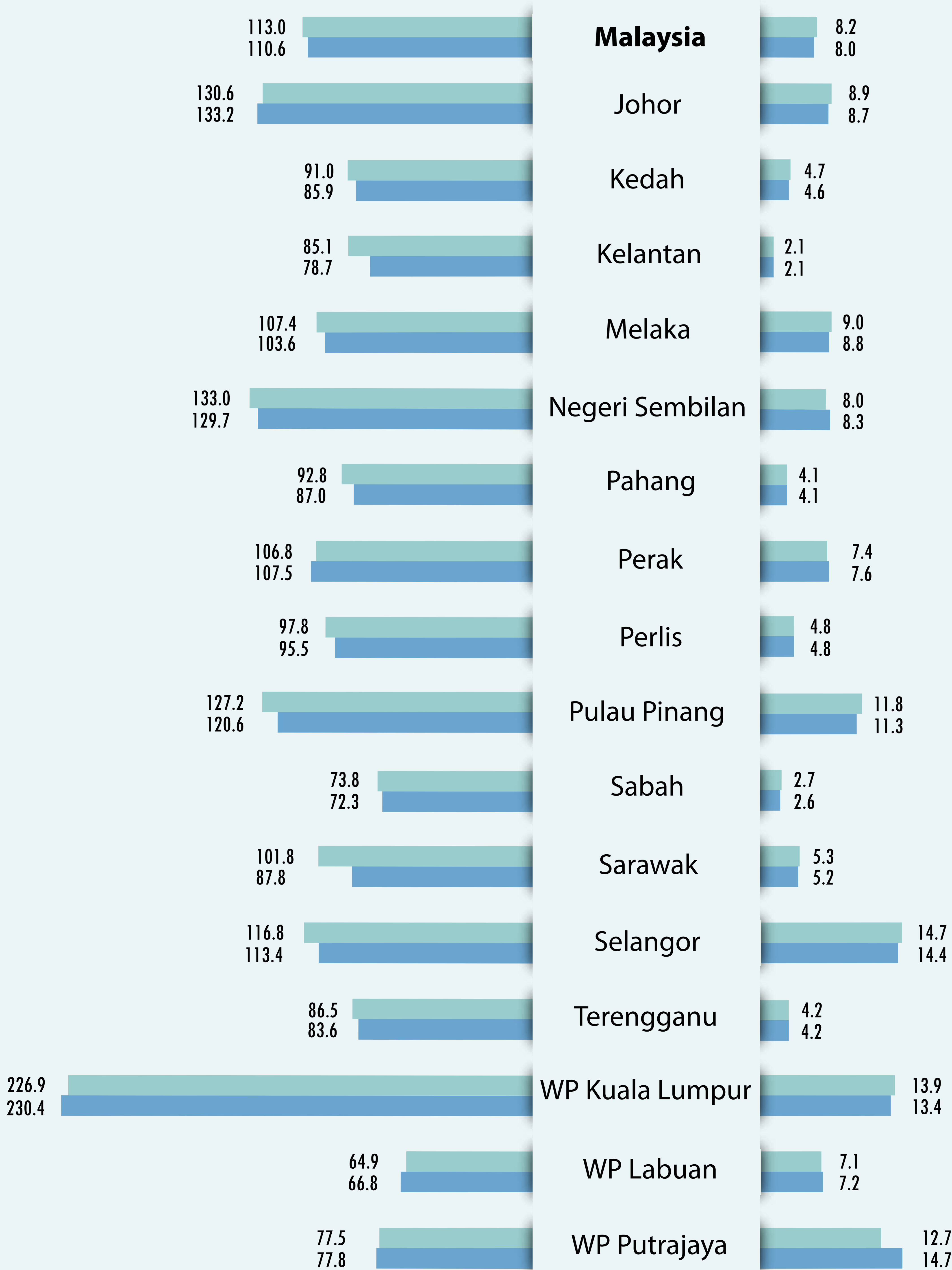
Mobile BB = Mobile-broadband

Broadband penetration rate per 100 inhabitants by states (%)



Mobile-broadband penetration rate per 100 inhabitants by states (%)

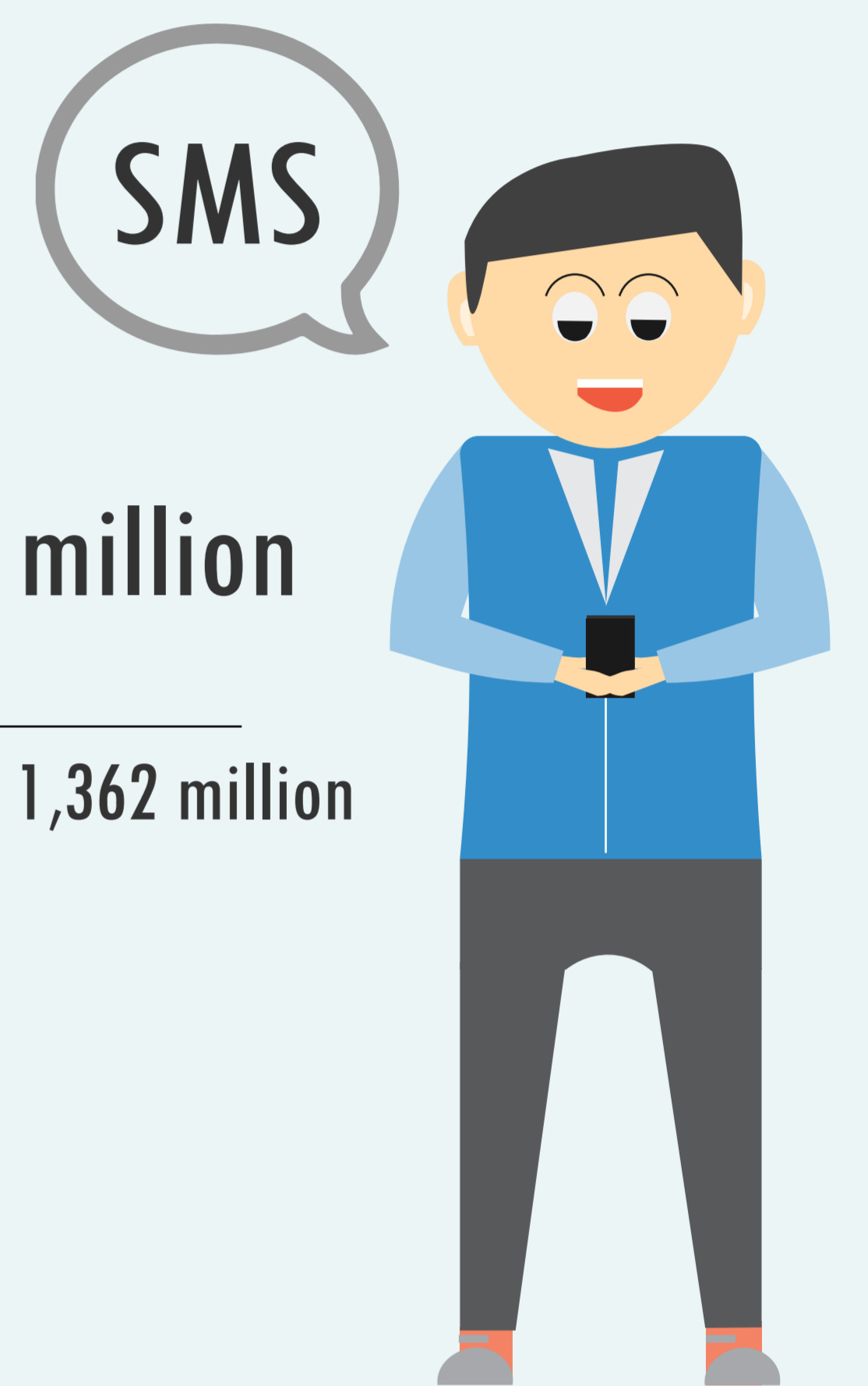
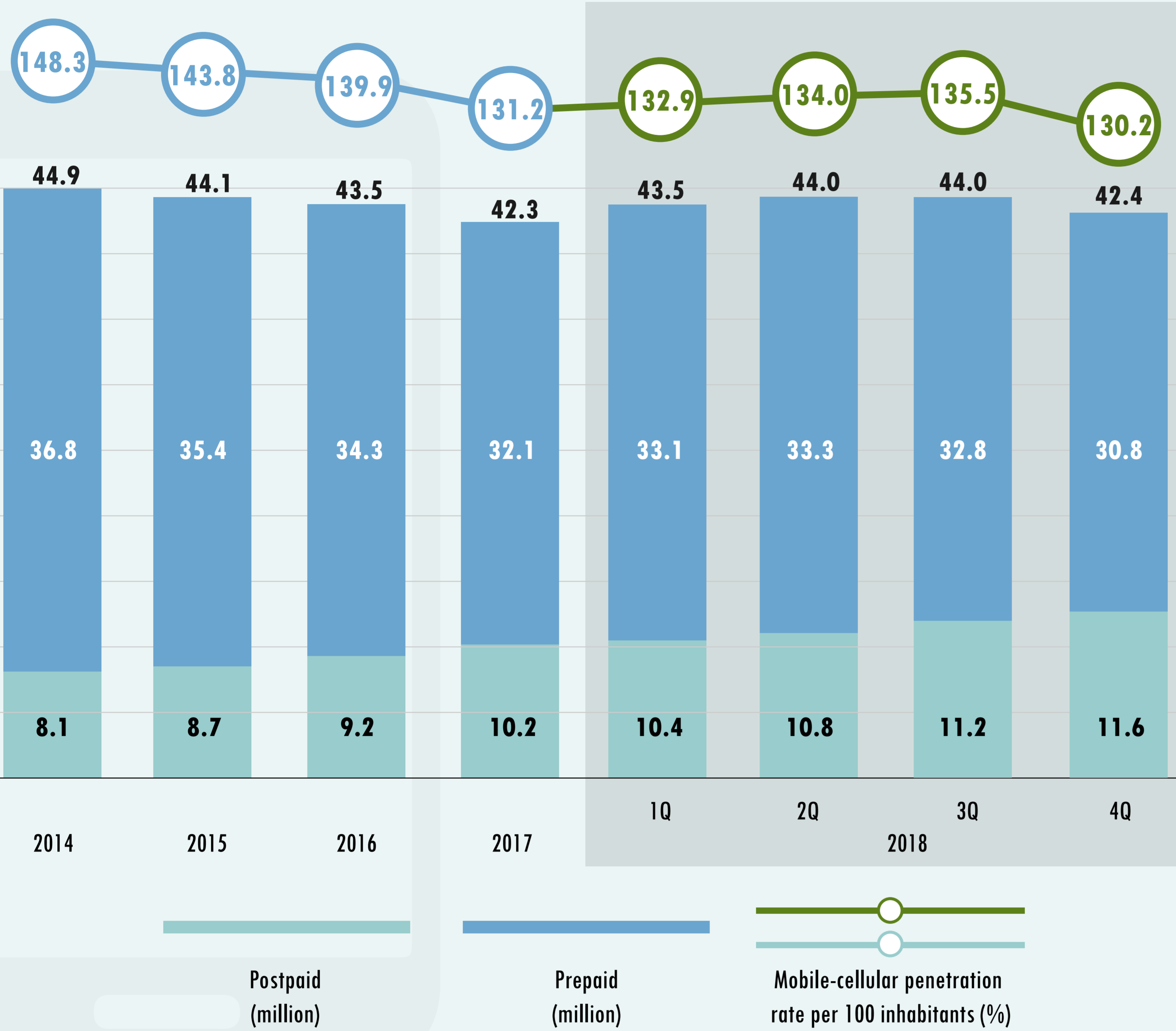
Fixed-broadband penetration rate per 100 inhabitants by states (%)



4Q 2018
3Q 2018

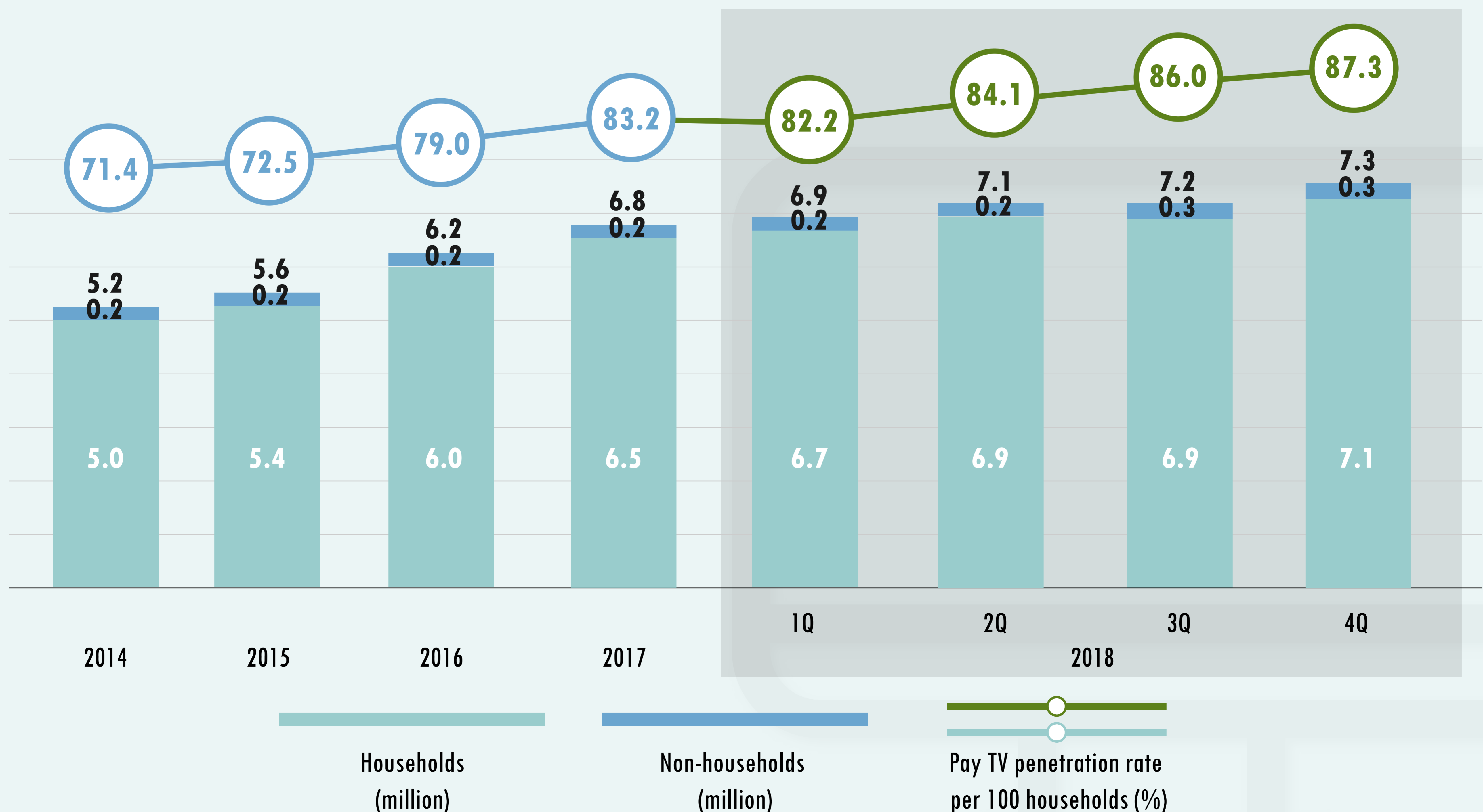
Mobile-cellular

Subscriptions and penetration rate per 100 inhabitants (%)



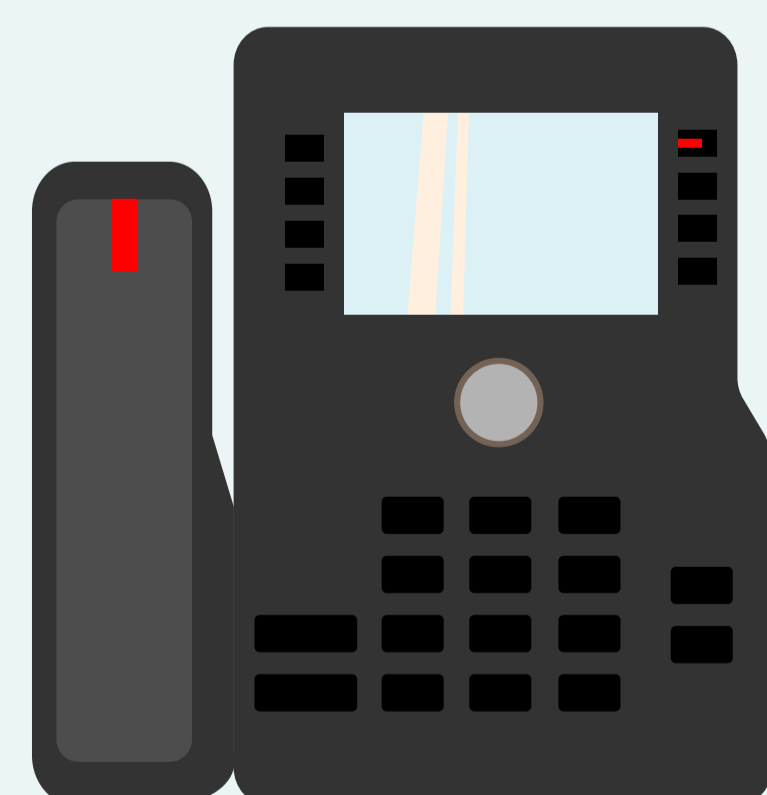
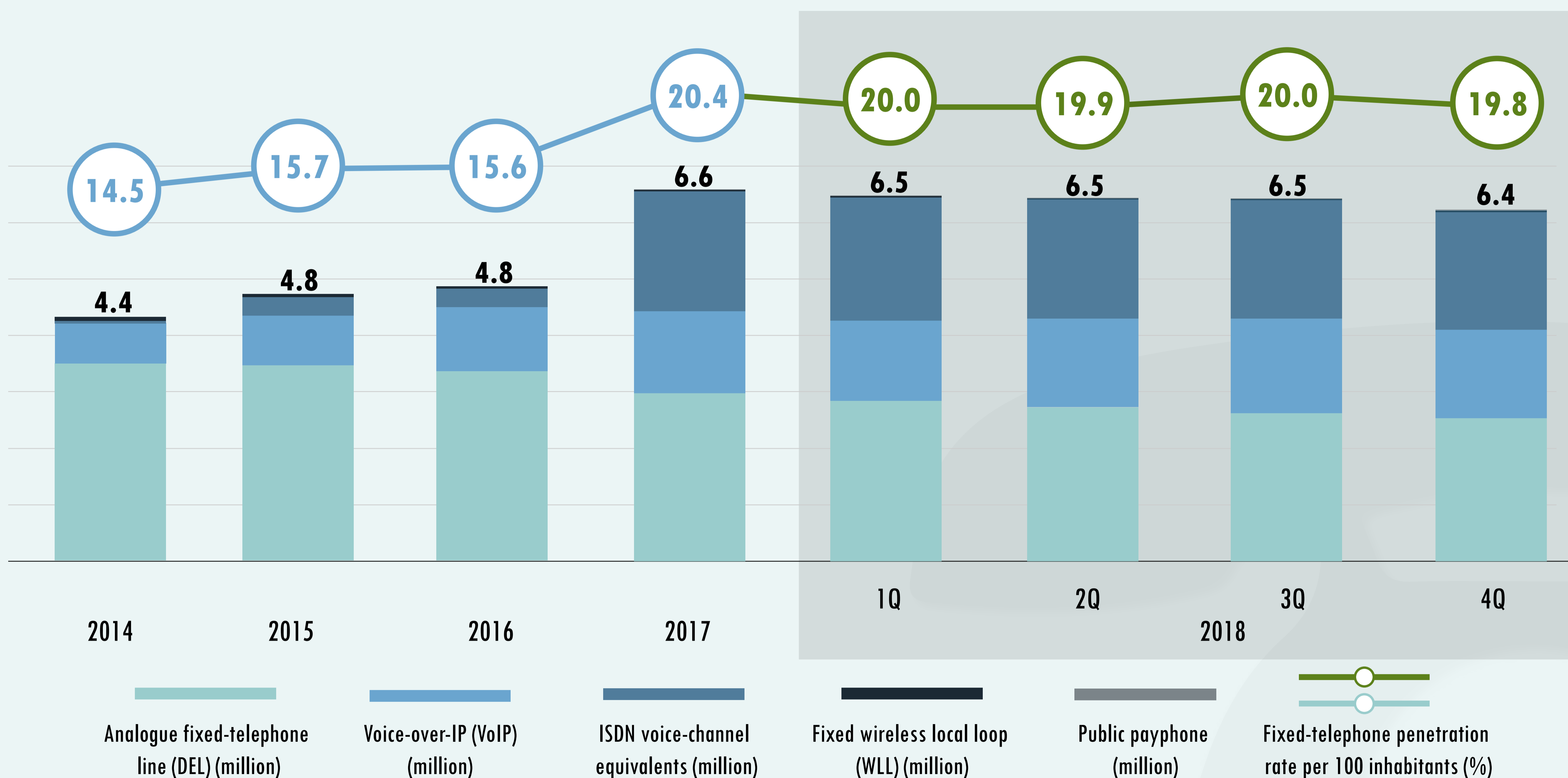
Pay TV

Subscriptions and penetration rate per 100 households (%)



Fixed-telephone

Subscriptions and penetration rate per 100 inhabitants (%)



6.4 million

fixed-telephone subscriptions

3Q 2018: 6.5 million

(includes DEL, VoIP, WLL, ISDN and payphones)



2.6 million

total DEL subscriptions

3Q 2018: 2.7 million

7.8

DEL per 100 inhabitants (%)

3Q 2018: 8.2

Note:

1. All penetration rates in this publication are estimated based on population projection as at end of period according to Census 2010 by Department of Statistics, Malaysia (DOSM)
2. Broadband penetration rate is calculated based on fixed-broadband subscriptions with speed equal or more than 1Mbit/s, and mobile-broadband with speed equal or more than 650kbit/s
3. Revised figures are underscored.

For further inquiries please contact Statistics Department MCMC at, statistics@mcmc.gov.my

