

# SPRINGFIELD POLICE DEPARTMENT 2018 ANNUAL REPORT

SPRINGFIELD  
JUSTICE  
CENTER

POLICE DEPARTMENT • MUNICIPAL COURT • CITY PROSECUTOR



# TABLE OF CONTENTS

## **MISSION**

To serve with honor, uphold the law and protect the community.

## **VALUES**

We, as individuals and as an organization, use these values as guiding principles in our service to the community.

## **PROFESSIONALISM**

Committed to excellence in the performance of our duty.

## **INTEGRITY**

Consistent ethical behavior through honesty, accountability, and high moral beliefs.

## **COURAGE**

Physical and mental strength to overcome all challenges.

## **HONOR**

Respect the noble tradition of Law Enforcement.

| <u>Content</u>                    | <u>Page #s</u> |
|-----------------------------------|----------------|
| Chief's Message                   | 3              |
| Springfield PD at a glance        | 4              |
| Organizational Chart              | 5              |
| Patrol Division                   | 6              |
| Investigations & Records Division | 10             |
| Detention Division                | 11             |
| Office of the Chief               | 11             |
| Community Outreach                | 12             |
| Volunteers                        | 13             |
| Statistics                        | 14             |
| Part of the Community             | 17             |
| Awards & Recognition              | 18             |
| CHETT & CHETT PET                 | 19             |



# A MESSAGE FROM THE CHIEF

## CITIZENS OF SPRINGFIELD SPRINGFIELD CITY COUNCIL

I have been with the Springfield Police Department since 1982. As I look back on my career, the thing that stands out the most is the uncommon relationship between the Police Department and the Community. The Springfield Citizens have always been an active part of SPD. Whether it be by their willingness to get involved, reporting of suspicious activity or actually helping officers apprehend suspects. In 2017, the Citizens again showed their commitment to a safer community by renewing the police and jail operating levy that funds the Springfield Municipal Jail and additional patrol staffing. The jail has dramatically reduced crime making for a much safer community for all of our families. In 2018, Citizens continued to demonstrate their commitment to a safe community through their calls for service, as well as their participation in many local police and safety events. As we move ahead, you have my commitment that SPD will continue to focus our efforts on crime reduction, safe neighborhoods and a City where crime is not welcome.

Police departments should never forget that when a citizen calls 911, the goal is to provide assistance as fast as possible. Many people go through life rarely having to call 911, but when they do, they expect an immediate response. SPD staff is dedicated to making this happen. Dispatchers and patrol officers work together to provide effective and timely emergency responses to the community. We support our patrol officers through the use of Community Service Officers for non-emergency calls, which benefits our citizens with quality customer service and enables patrol officers to be available for more emergent calls for service. Additionally, CAHOOTS provides crisis mental health services for our community. This reduces reliance on police officers while providing the community an enhanced service opportunity. These additional resources allow our patrol officers to respond quickly to 911 calls for service.

The Men and Women of SPD are dedicated to keeping your community safe and take great pride in the service they provide. The call takers, dispatchers, detention officers and police officers are committed individuals willing to go the extra mile to provide quality service. Members of the public should expect no less.

SPD values the opportunity to serve the citizens of the City of Springfield and looks forward to the continuation of our unique and valued relationship.

Sincerely,



Richard Lewis, Chief of Police



# SPRINGFIELD POLICE DEPARTMENT AT A GLANCE

The Springfield Police Department consists of the Office of the Chief, the Patrol Division, the Investigative Services & Records Division, and the Detention Division. The divisions work together to maintain public safety and enforce the law in a fair and impartial manner.

The Police Department responds to emergency and law enforcement needs of the community through response to prioritized calls for service, visible police patrols, investigation of crime, enforcement of traffic laws, animal control enforcement, and providing detention services for municipal offenders. The Police Department also performs community outreach and provides crime prevention education.

## Quick 2018 Department Facts

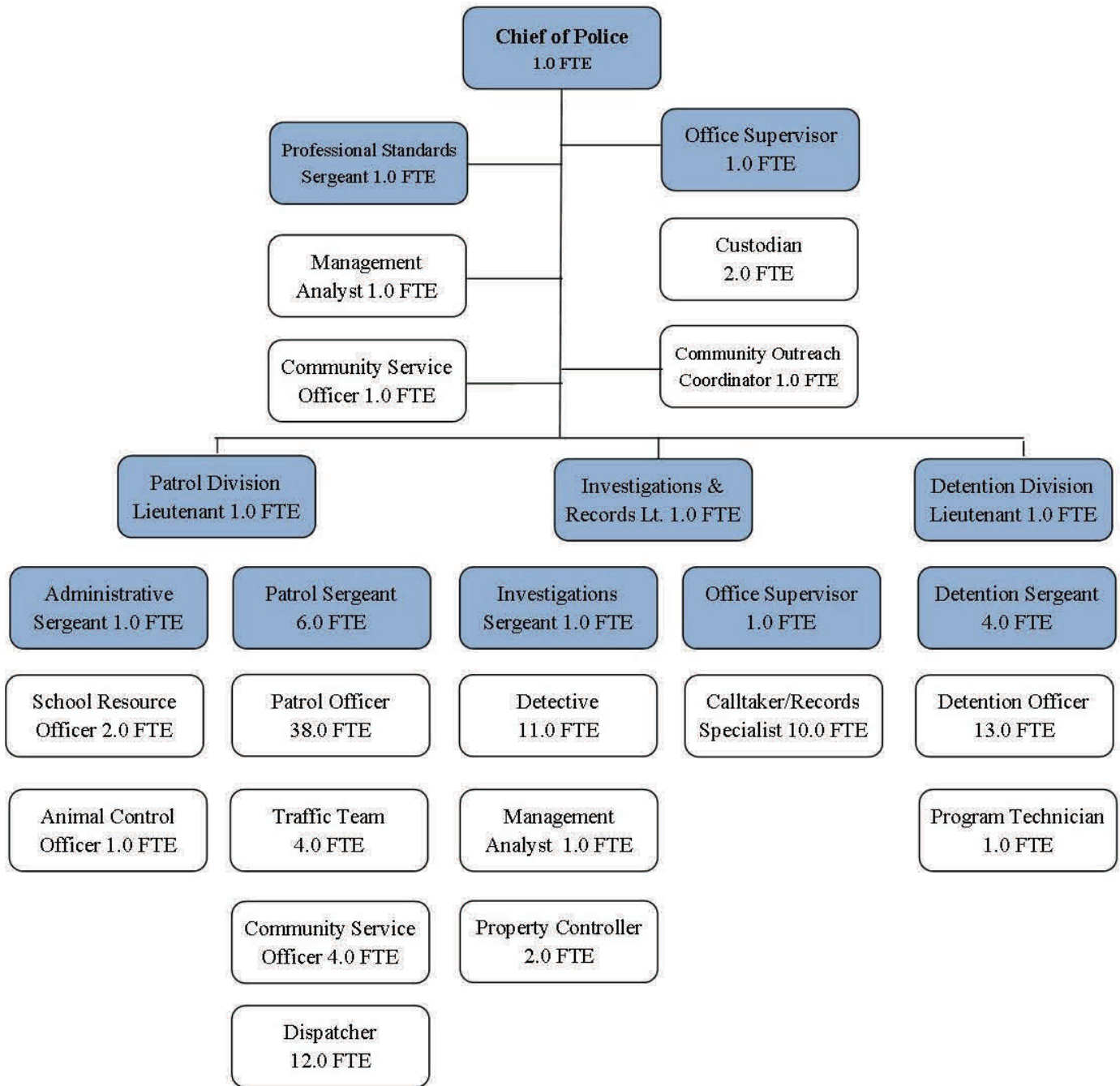
|   |              |                                    |           |
|---|--------------|------------------------------------|-----------|
| <b>Sworn Personnel</b>                  | 68 FTE       | <b>Calls for Service</b>           | 47,817    |
| <b>Civilian Personnel</b>               | 55 FTE*      | <b>Number of Police Reports</b>    | 10,851    |
| <b>Officer per 1,000 residents</b>      | 1.09         | <b>Number of Arrest Reports</b>    | 5,981     |
| <b>FY19 Amended Budget Expenditures</b> | \$21,985,536 | <b>FY19 Amended Budget Revenue</b> | \$724,828 |

\*55 FTE approved, 53 FTE with budgetary funding in FY19

## CITY OF SPRINGFIELD AT A GLANCE

|                            |                       |  |  |
|----------------------------|-----------------------|--|--|
| <b>Incorporated:</b>       | February 25, 1885     | <b>Local Amenities:</b>  |  |
| <b>Government Style:</b>   | Council-Manager Style | <ul style="list-style-type: none"> <li>• Over 1500 acres of public parks and recreation facilities</li> <li>• Abundant recreation opportunities due to the proximity to the McKenzie River, Willamette River, Cascade Mountains, and the Oregon Coast</li> <li>• Springfield School District servicing 10,600 students with 12 elementary schools, five middle schools, and five high schools</li> </ul> |  |
| <b>Population:</b>         | 62,353                |  |  |
| <b>Elevation:</b>          | 456 feet              |  |  |
| <b>Area:</b>               | 15.57 sq/miles        |  |  |
| <b>Median Income:</b>      | \$41,911              |  |  |
| <b>Average Home Value:</b> | \$183,231             |  |  |

# SPD ORGANIZATIONAL CHART



# DEPARTMENT DIVISIONS

## Patrol Division

The patrol division consists of police officers, community service officers and dispatchers who provide 24-hour services, 365 days a year.

The patrol division responds to a wide variety of calls for service, to include in progress robberies, thefts from vehicles, domestic violence, welfare checks, motor vehicle accidents, and the occasional additional support to animal control for at-large turtles. Patrol officers enforce state and local laws and municipal codes, as well as perform preventative community policing.



The patrol unit coordinates policing efforts with SPD special units and programs, such as the traffic team, school resource officers, K-9 unit, drug dog unit, animal control, Major Accident Investigation Team (MAIT), bicycle patrol, and CAHOOTS (Crisis Assistance Help Out On The Street).

The Patrol Division provides services in an effort to protect and maintain the peace and safety of the community.

## Traffic Team

The Traffic Team consists of three motorcycle officers and one driving under the influence (DUI) enforcement officer. The motorcycle team emphasizes enforcement of traffic laws, to include focus on speed, distracted driving, pedestrian safety, and bike safety. The motorcycle team provides traffic control for local and regional community events, such as local parades, marathons, and large sporting events. The DUI enforcement officer is assigned to an unmarked patrol car and emphasizes patrol efforts toward identification and enforcement of intoxicated drivers.



# K9 and Drug Dog Unit

The K9 program is supported by a sergeant and four sworn K9 officers and their police dogs. The dogs are used for suspect apprehension, locating missing persons, and handler and officer



protection. The K9 teams provide public demonstrations, attend various community and special events, and host an annual state-wide police dog competition that is free for the community to attend.

The drug dog program consists of a specially trained officer and dog to identify and intercept drug trafficking activity in Springfield and surrounding areas. The drug dog provides drug search and detection services.

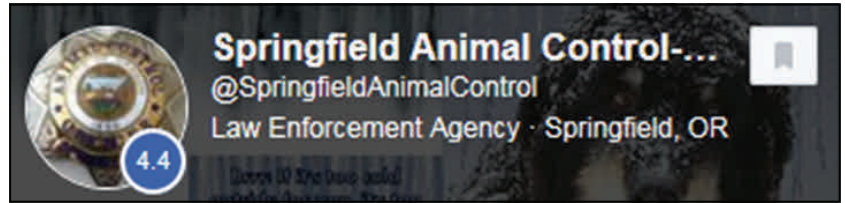
## School Resource Officers

In partnership with the Springfield School District, the police department assigns two police officers as School Resource Officers. The School Resource Officers provide law enforcement presence for the school district, with focus towards Thurston High School and Springfield High School. School Resource Officers emphasize establishing positive relationships and maintaining a safe and secure environment which is conducive to teaching and learning.



## Animal Control

The Animal Control program is staffed by one Animal Control Officer who is responsible for enforcing the City's dog license and animal control ordinances. The Animal Control Officer responds to animal related calls for service, including dog bites, animals at-large, and potential neglect cases. Animals found at large in the City of Springfield are either returned to their owner or transported to Greenhill Humane Society, as needed. The Animal Control Officer utilizes various tools, including social media, to find the owners of found animals, share information about lost animals, and share safety tips to keep the community's pets safe. Follow Springfield Animal Control on Facebook for informational updates, safety reminders, and lost and found dog information.



## Community Service Officers

Non-sworn patrol community service officers (CSOs) respond to non-emergency calls for service. CSOs perform a variety of services, to include writing reports on incidents that are not in progress and do not require sworn officer presence, enforce parking control laws such as nuisance vehicle and traffic hazard removal, assist with local subpoena service, and support at accident scenes. CSOs deliver services that may otherwise be unavailable or significantly delayed.

## Bike Patrol

The Bike Patrol unit is a team of police officers who provide seasonal police presence on bicycles in the downtown, parks, and during community events. Bike patrols are also used for focused patrols in higher crime areas with accessibility challenges by motor vehicles. Bike patrol services are partially funded by TEAM Springfield, which is a partnership between the City of Springfield, Springfield School District, Springfield Utility Board, and Willamalane Park and Recreation District.





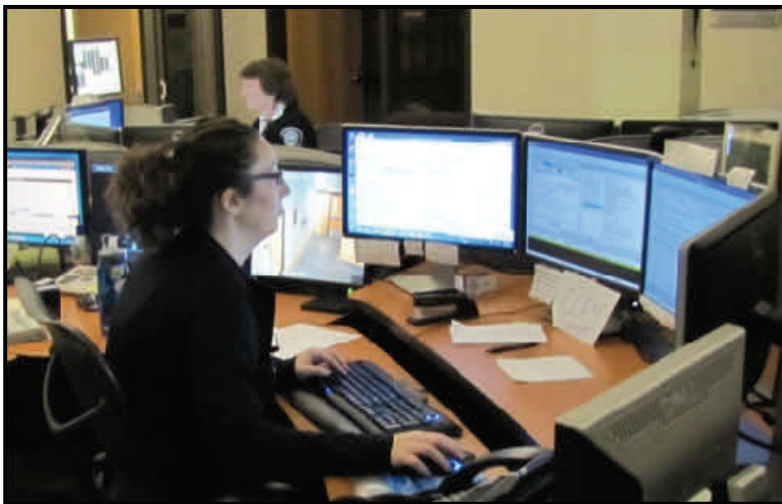
Our partnership with CAHOOTS (Crisis Assistance Helping Out On The Streets) provides specialized response for intoxicated subjects, suicidal subjects, or persons experiencing a mental health crisis which does not require a law enforcement response.

Lane County has provided grant funding to support a majority of the funding for the City of Springfield's CAHOOTS program through June 30, 2019.



## Dispatch

Springfield Police dispatchers receive emergency and non-emergency phone calls and serve as the secondary Public Safety Answering Point (PSAP) in Lane County. Dispatchers guide callers



through stressful situations and obtain and relay vital information to officers in the field.

Dispatchers perform queries, enter data in local, regional and national criminal justice computer systems, and provide additional support functions. Dispatchers maintain an ongoing awareness of the location and activity for all field units via radio communication and the computer-aided dispatch application.

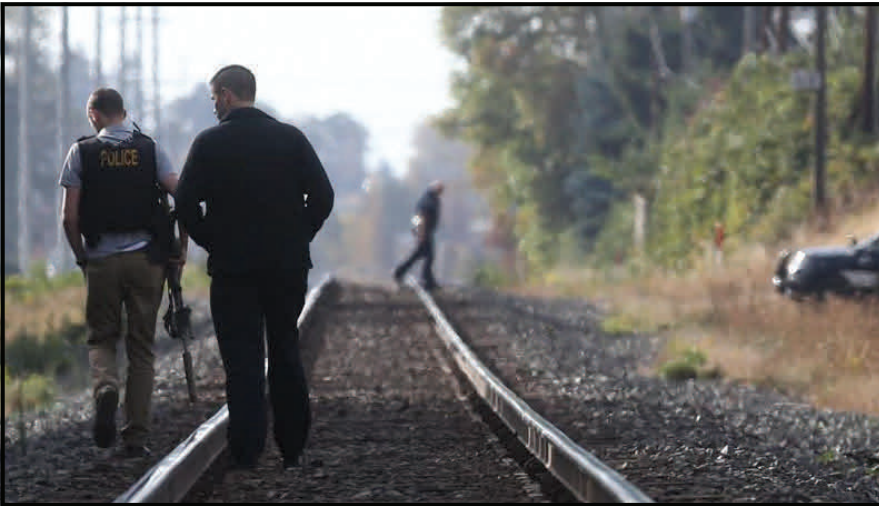
## MAIT

The Major Accident Investigation Team (MAIT) is a team of police officers responsible for the investigation of traffic accidents involving serious physical injury or death, and major crime scene reconstruction in the City of Springfield. MAIT team members are specially trained in accident investigation, evidence collection and reconstruction.

# Investigations and Records Division

## Investigations

Detectives assigned to the Investigations Unit investigate and follow up on person, property, and drug crimes. The crimes investigated range from murder to minor theft. Each team of detectives have a primary criminal investigative focus, to include assault, robbery and burglary crimes, property theft, auto theft, fraud, youth and/or gang crime, and local drug crimes. Two detectives



are dedicated to sexual assault, child abuse or elder abuse cases, and receive specialized training due to the sensitive nature of the cases. One detective specializes in computer forensic investigations and has specialized training and certifications to support retrieval and recovery of data related to criminal activity.

## Property & Evidence

Property and evidence personnel perform a variety of complex duties including the processing, receipt, storage, safekeeping, release and disposal of property or evidence that comes into the custody and/or control of the Springfield Police Department. Property and evidence personnel ensure compliance with state and local laws, codes and regulations while maintaining the record keeping system related to property and evidence.

## Records

The Records section is supported by Records and Communications Specialists who maintain SPD's law enforcement records and receive non-emergency phone calls for police services, as well as assist the public with in-person inquiries in the public lobby of the Springfield Justice Center. Records duties include oversight of reporting the department's crime statistics to the State of Oregon, as well as fulfilling requests for police reports from officers, law enforcement agencies, citizens and other applicable agencies in accordance with department policy and statute requirements. Calltaking duties include creation of calls for service in the computer aided dispatch application, writing police reports with no suspect information, and providing information such as referrals to other public resources.



### Springfield Municipal Jail

The Springfield Municipal Jail opened in January 2010 to provide an additional resource to hold offenders accountable for their actions and reduce crime rates in Springfield. Since the opening of the jail, there has been a notable decrease in property and person crime rates, a reduction in police officer time spent transporting and booking in criminal offenders, and an increase to police officers' time spent patrolling Springfield neighborhoods.

Springfield Municipal Jail operations includes the book-in of incoming arrestees, housing inmates, and oversight of jail security and communications. Jail staff also provide transportation of inmates to and from the Lane County Jail, to and from the Springfield Municipal Court, as well as security and bailiff duties at all court hearings for the Springfield Municipal Court.



### Office of the Chief

The Office of the Chief Division provides leadership and oversight of the department as a whole. The Springfield Police Department is led by Chief Richard L. Lewis. Chief Lewis began his service with SPD as a reserve officer in 1982, has promoted through the department serving as a police officer, detective, sergeant, SWAT commander, captain, deputy chief, and was selected as the Chief of Police in April 2017.

In addition to leadership and oversight responsibilities, the Office of the Chief Division includes hiring, training, professional standards, community outreach, and general administrative functions.

# Community Outreach

The Community Outreach program fosters positive community interaction and coordinates community events including National Night Out, Justice Center Open House, safety fairs, and the annual Citizens Police Academy. Community Outreach efforts provide training, information and crime prevention strategies to Neighborhood Watch groups, local schools, and organizations. The Community Outreach Coordinator oversees the program and actively develops working relationships with key community stakeholder groups to support the work and mission of the Department.



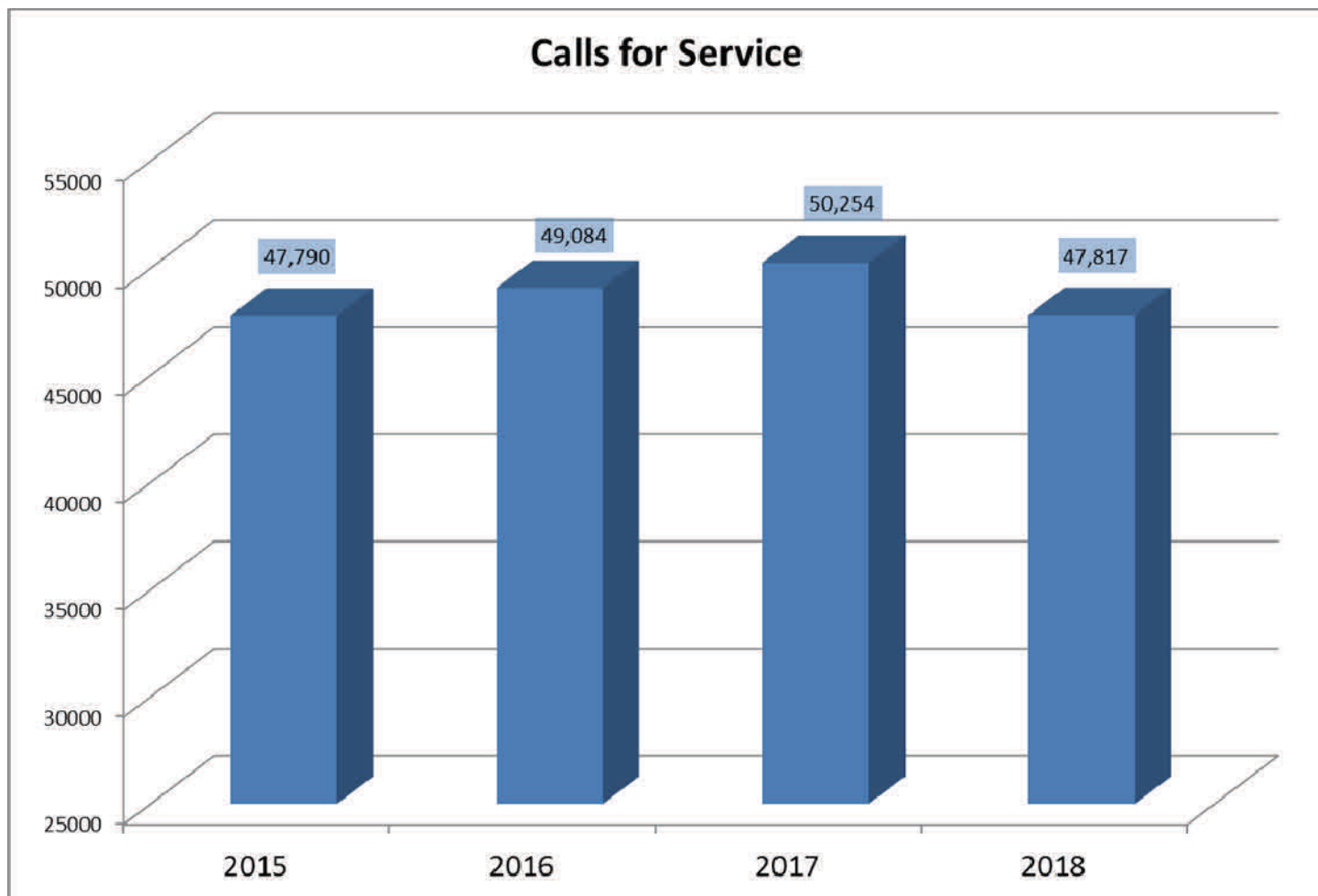


“NEVER DOUBT THAT A SMALL GROUP OF THOUGHTFUL, COMMITTED CITIZENS CAN CHANGE THE WORLD; INDEED, IT’S THE ONLY THING THAT EVER HAS.”  
-MARGARET MEAD

The Community Outreach program, as well as many other Department programs, are supported by over 30 active volunteers. Volunteers provide invaluable support for community events, Neighborhood Watch, LOC Project, fleet services, animal control, Citizens Police Academy, and many other community focused Department efforts.



# SPRINGFIELD POLICE SERVICE STATISTICS



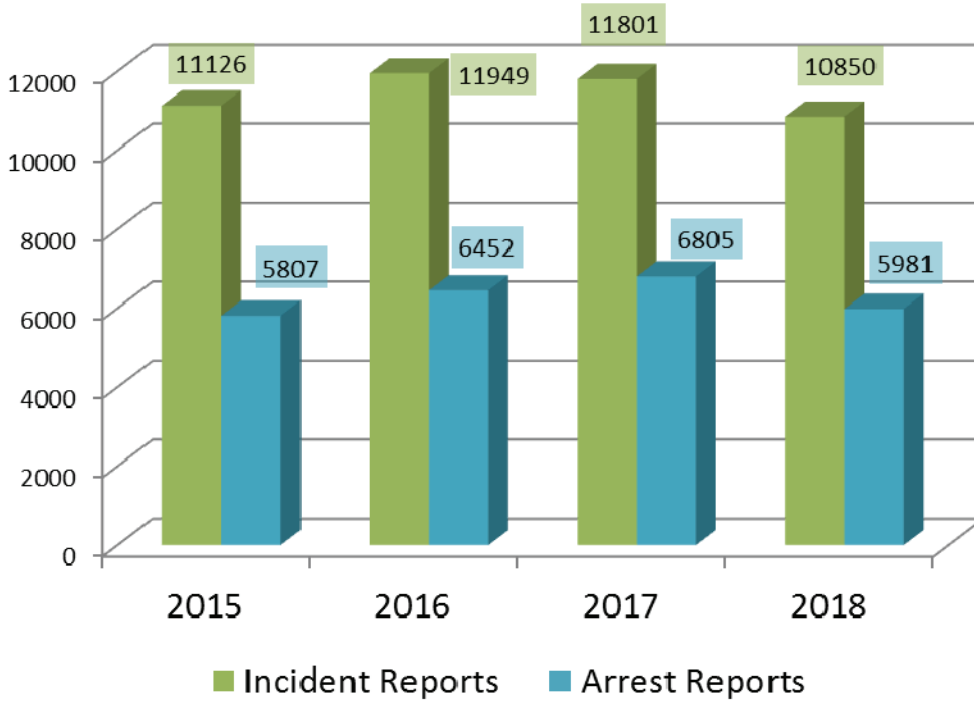
## 2018 Top 10 Calls for Service by Nature Codes (excluding traffic and person stops)

| Nature Code           | Total |
|-----------------------|-------|
| CHECK WELFARE         | 2514  |
| DISPUTE               | 1942  |
| WARRANT SERVICE       | 1923  |
| ASSIST PUBLIC- POLICE | 1668  |
| THEFT                 | 1572  |
| DWS                   | 1466  |
| CRIMINAL TRESPASS     | 1332  |
| ABANDONED VEHICLE     | 1303  |
| SUSPICIOUS SUBJECT    | 1008  |
| SUSPICIOUS CONDITIONS | 981   |

## 2018 Top 10 Citation Violations by Charge Type

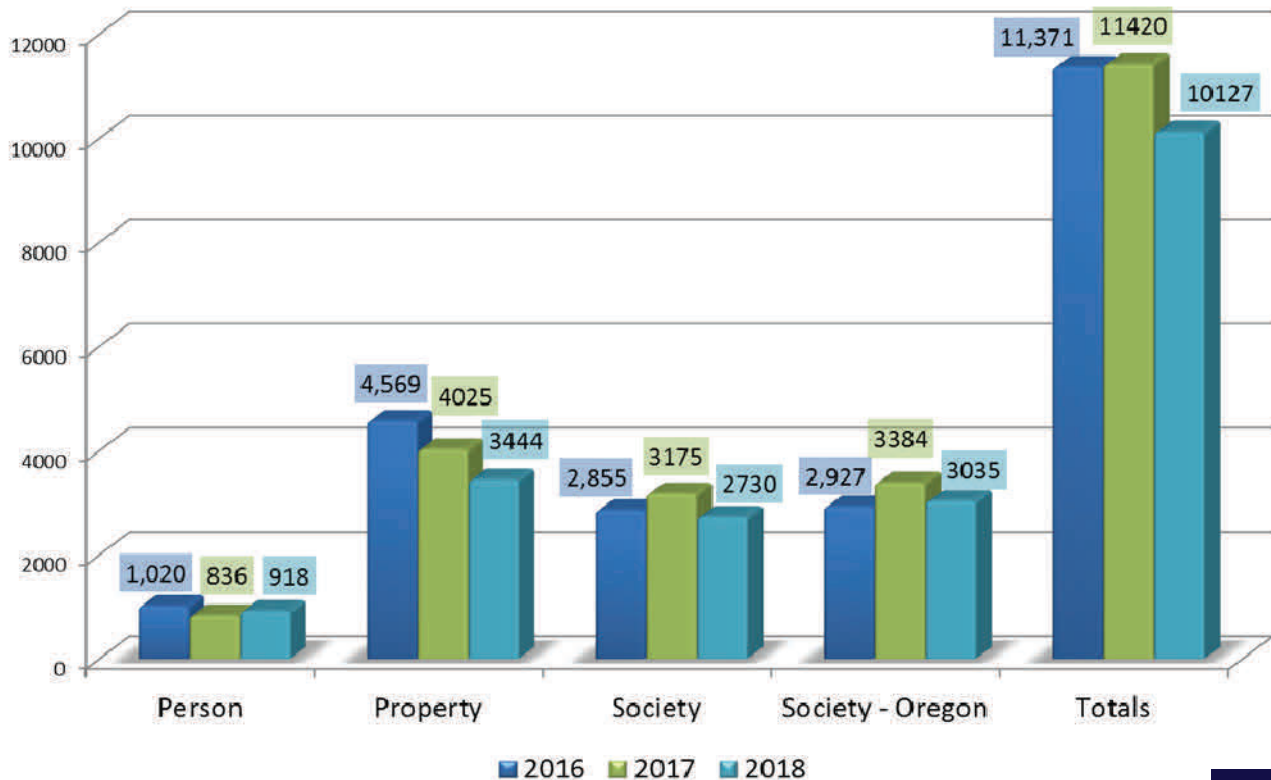
| Charge Type                | Total |
|----------------------------|-------|
| DWS VIOLATION              | 1505  |
| VIOLATION SPEED LIMIT      | 674   |
| VIOLATION BASIC SPEED RULE | 359   |
| DRIVING UNINSURED          | 345   |
| OPER W/O DRIVE PRIVILEGE   | 324   |
| DRIVE CELL PHO 1ST OFFENSE | 290   |
| FLR PAY VEH REG FEE        | 276   |
| FLR OBEY TRF CONT DEV      | 205   |
| FLR USE SAFETY BELT/SYSTEM | 172   |
| CARELESS DRIVING           | 101   |

## Number of Reports



Offense codes are defined in accordance with Oregon-NIBRS requirements. Person crimes are crimes against people in which the victim is present and directly involved. Property crimes are crimes where the victim is not present or directly involved with the offense. Society crimes represent society's prohibitions on engaging in certain types of activity. Society-Oregon crimes are society crimes unique to the State of Oregon.

## Reported Crime Offenses by O-NIBRS Category



## SPD Crime Statistics, by IBR & Crime Category

Dates: 1/1/2018 - 12/31/2018

| IBR Category       | Crime Category (examples included in Category)   | 2018 Cases | 2017 Cases | Case # Change Rate |
|--------------------|--|------------|------------|--------------------|
| Person             | 01 HOMICIDE - (Willful Homicide)   | 2          | 1          | 100.00%            |
|                    | 02 RAPE - (Forcible Rape)  | 28         | 19         | 47.37%             |
|                    | 03 ROBBERY (Highway, Business, Convenience Store, Residence, Bank, Other)  | 31         | 41         | -24.39%            |
|                    | 04 ASSAULT - (Aggravated Assault, Attempted Murder, Simple Assault, Intimidation, Stalking, Violation of Restraining Order, Reckless Endangering)  | 720        | 659        | 9.26%              |
|                    | 17 SEX OFFENSE - (Non-Force Statutory Rape, Contribute to Sex Delinquency of Minor, Physical Molestation, Obscene Phone Calls, Incest, Exposer, Forcible Sodomy, Non-Force Sodomy, Sex Assault With An Object, Invasion of Privacy, Other) | 106        | 85         | 24.71%             |
|                    | 20 FAMILY OFFENSE - (Child Neglect, Criminal Mistreatment, Other)  | 24         | 26         | -7.69%             |
|                    | 25 KIDNAPPING  | 7          | 5          | 40.00%             |
|                    | IBR Category Total   | 918        | 836        | 9.81%              |
| Property           | 05 BURGLARY  | 220        | 241        | -8.71%             |
|                    | 06 THEFT   | 1800       | 2121       | -15.13%            |
|                    | 07 MOTOR VEHICLE THEFT   | 215        | 258        | -16.67%            |
|                    | 09 ARSON   | 16         | 17         | -5.88%             |
|                    | 10 FORGERY   | 159        | 212        | -25.00%            |
|                    | 11 FRAUD   | 353        | 336        | 5.06%              |
|                    | 12 EMBEZZLEMENT  | 5          | 3          | 66.67%             |
|                    | 13 STOLEN PROPERTY   | 31         | 27         | 14.81%             |
|                    | 14 VANDALISM   | 645        | 809        | -20.27%            |
|                    | 23 EXTORTION/BLACKMAIL   | 0          | 1          | -100.00%           |
| IBR Category Total | 3444   | 4025       | -14.43%    |                    |
| Society            | 15 WEAPONS OFFENSE - (Possess Illegally, Carry Concealed Weapon, Felon in Possession, Shooting in Prohibited Area, Explosives, Other)  | 167        | 195        | -14.36%            |
|                    | 16 PROSTITUTION  | 0          | 4          | -100.00%           |
|                    | 17 SEX OFFENSE - (Pornography/Obscene Material)  | 14         | 5          | 180.00%            |
|                    | 18 DRUG LAW VIOLATION  | 566        | 720        | -21.39%            |
|                    | 21 DUII  | 389        | 603        | -35.49%            |
|                    | 22 LIQUOR/TOBACCO VIOLATION - (MIP, Illegal Establishment, Drinking in Public, Furnishing, Other)  | 91         | 85         | 7.06%              |
|                    | 24 DISORDERLY CONDUCT  | 593        | 641        | -7.49%             |
|                    | 26 ALL OTHER CRIMES - (Trespass, Escape, Animal Crimes, Littering, Other)  | 792        | 826        | -4.12%             |
|                    | 28 CURFEW  | 16         | 11         | 45.45%             |
|                    | 29 RUNAWAY   | 102        | 85         | 20.00%             |
| IBR Category Total | 2730   | 3175       | -14.02%    |                    |
| Oregon Society     | 39 TRAFFIC CRIME - (Hit & Run, Reckless Driving, Eluding, DWVS-Misd/Fel, Fail to Display License)  | 990        | 1027       | -3.60%             |
|                    | 44 GAME  | 1          | 0          | #DIV/0!            |
|                    | 51 CUSTODY - (Detoxification, Police Officer Mental Hold)  | 206        | 292        | -29.45%            |
|                    | 52 WARRANT - (Fail to Register as Sex Offender)  | 51         | 63         | -19.05%            |
|                    | 53 STOLEN VEHICLE RECOVERED - (for another agency)   | 59         | 55         | 7.27%              |
|                    | 54 STOLEN PROPERTY RECOVERED - (for another agency)  | 32         | 37         | -13.51%            |
|                    | 55 FUGITIVE - (Warrants)   | 1696       | 1910       | -11.20%            |
| IBR Category Total | 3035   | 3384       | -10.31%    |                    |

\*as of 2/11/2019, source SPD Records Management System data



# PART OF THE COMMUNITY

The Springfield Police Department and its employees are proud to be part of the community!



Springfield Police Department employees proudly participate and volunteer for a number of community minded activities.

Here are a few pictures from some of the events (clockwise from the top):

- Shop with a Cop
- Special Olympics Powerlifting Team
- Polar Plunge (benefits Special Olympics)
- SPD vs EPD softball game at PK Park
- Neighborhood Trick-or-Treat



SPD regularly shares information, updates, and events through social media. Check us out on Facebook, Twitter, and Instagram!



# AWARDS & RECOGNITION

## 2018 Department Awards

### Employee of the Year

Detention Sergeant Clontz

### Medal of Honor

Officer Garcia-Cash

Officer Murray

Officer Thomsen

Sergeant Humphreys

### Medal of Valor

Officer Harbert

Officer Hargis

Officer Rosales

### Lifesaving

Officer Rosales

Detention Officer Miller

Detention Officer Steiner

Detention Officer Williams

Detention Sergeant Clontz

Officer Krieger

Officer Akins

### Meritorious

Officer Basaraba

Officer Bragg

Officer Hargis

Officer Lane

Officer O'Leary

Officer Rosales

Officer Speldrich

Officer Swint

Officer Turner

Sergeant R.A. Lewis

Sergeant Neiwert

## Non-Department Awards & Honors

*received in 2018*

- ◇ Springfield Police Dept - 2017 Agency of the Year, DUII Multi-Disciplinary Training Task Force
- ◇ Officer Burke - 2017 DUII Officer of the Year, DUII Multi-Disciplinary Training Task Force
- ◇ Officer Stone - 2017 DRE Officer of the Year, DUII Multi-Disciplinary Training Task Force
- ◇ Tiffany Monroe - 2018 Ken Davis Award, Oregon Law Enforcement Torch Run Executive Council

## Employee Changes in 2018

### New Employees and Transfers

Police Officers: Berney, Card, Dunn, Gold,  
Rosales

Detention Officers: Elliott, Perdue

Community Outreach Coordinator: Solares

Reserve Police Officer: Fisher

### Promotions

Sergeant Crollly

Sergeant Grice

Sergeant Massey

Sergeant Murkin

Sergeant Neiwert

### Retirements

Lieutenant Richard Jones (31 years)

Sergeant Michael McCarthy (32 years)

Dispatcher Kim Charboneau (36 years)

# CHETT & CHETT PET

Thanks to the vision and generosity of the Springfield community, the Springfield Police Department has established programs to receive donated funds to provide financial assistance to those in need, when their circumstances align with CHETT and CHETT Pet program initiatives.

## CHETT Program

The CHETT program (Community Help Easing Troubled Times) was established by the Springfield Police Department in 2015, acting on the suggestion of the late Chester “Chet” Martin, who was a Springfield citizen and retired veteran of the United States Coast Guard. The CHETT program is funded by citizen donations to help ease troubled times for those in temporary need of assistance.

CHETT funds are to be used for victims of crime, those displaced by crime or critical incident (including innocent family members of perpetrators), or people in the community with little hope or few options. CHETT program funds have been used to provide financial assistance in various circumstances, to include replacement of a motorized scooter damaged in hit & run incident, temporary hotel accommodations for a homeless family, replacement of a stolen bicycle, travel costs for a mother to visit her son in the hospital after a serious motor vehicle accident, and gas money to help with transportation to a local Egan Warming Center during freezing weather conditions. The CHETT program has provided many people much needed and appreciated assistance because of the kind donations from our community.



Carolyn Martin, Lucky (dog), Chester Martin, and Dennis Miller in March 2016. CHETT funds helped replace Miller’s damaged scooter.

## CHETT PET Program

The CHETT Pet Emergency Vet fund was established in 2017 to assist with the emergency veterinary treatment of injured domestic pets and companion animal pets in Springfield. Many considerations are made by SPD staff when determining use of CHETT Pet funds, to include veterinary staff proposed treatment, initial and ongoing treatment costs, likelihood of favorable outcomes, expected quality of life of the pet, and the temperament of the pet with respect to suitability for adoption once medically stable.

The CHETT Pet Emergency Vet Fund was conceived in memory of the late Chester Martin, the namesake behind the CHETT Program. Chester Martin was a pet lover and had his own companion animal – Lucky, who was at his side when he died in 2016.

## ACKNOWLEDGEMENTS

Many thanks for the support and guidance to the:

Mayor  
City Councilors  
City Manager  
Springfield Police Advisory Committee



SPRINGFIELD POLICE DEPARTMENT

Springfield Justice Center  
230 4th Street  
Springfield, OR 97477

[www.springfield-or.gov/police](http://www.springfield-or.gov/police)  
[police@springfield-or.gov](mailto:police@springfield-or.gov)