



QUIET PROFESSIONALS

THE POWER OF CEREBRA GREY

Cerebra Grey is a powerful cloud-based open-source mapping, visualization, and data management platform providing advanced analytics of authoritative and other disparate data streams. Hosted in a government-approved cloud platform, Cerebra Grey offers IL4 (FOUO), IL5 (NIPR), and CJIS compliance. Key capabilities provided by the Cerebra Grey platform are advanced machine learning and artificial intelligence processing, big data analysis, spatial analysis, data stream modeling, dynamic asset tracking, Geofencing areas of interest, and event-oriented alerting. The Cerebra Grey platform is built on the Esri ArcGIS capabilities and powered by hyperscaled cloud computing and storage.

- IL4 (FOUO)/IL5 (NIPR)/CJIS
- Hyperscaled Cloud Platform
- AI/ML
- Big Data Analytics
- Spatial Analysis
- Geofencing
- Event-Oriented Alerting
- Esri ArcGIS capabilities

FLEXIBLE SUBSCRIPTIONS TO MEET INDIVIDUAL USER NEEDS

LINEBACKER

This subscription will empower executive officers, managers, directors, and anyone that requires access to fast, accurate information and data to make critical decisions.

GALAHAD

Galahad is the core subscription that enables your most important analytics. People with roles such as GIS technicians and specialists, asset managers, data story-tellers, data quality engineers, data entry clerks, field technicians, and communications coordinators are likely to find the Galahad subscription a good match for their job responsibilities.

OLYMPIC

All the features of Galad plus the Esri Professional Client. GIS analysts, geodevelopers, and cartographers are likely to find the Olympic subscription a good match for their job responsibilities.





PRODUCT 1

LINEBACKER

12 Month Subscription

PRICE

\$1,000.00

ANNUALLY PER USER

SUBSCRIPTION FEATURES

View Live Maps and Applications – Access data created by others or your own private group spatial information to make informed decisions and monitor performance.

MONITOR PERFORMANCE AND USE LOCATION DATA TO MAKE BETTER DECISIONS.

With Linebacker, you can securely view maps, dashboards, and applications that provide situational awareness and data visualization. This subscription will empower executive officers, managers, directors, and anyone that requires fast accurate information and data to make critical decisions.





PRODUCT 2

GALAHAD

12 Month Subscription

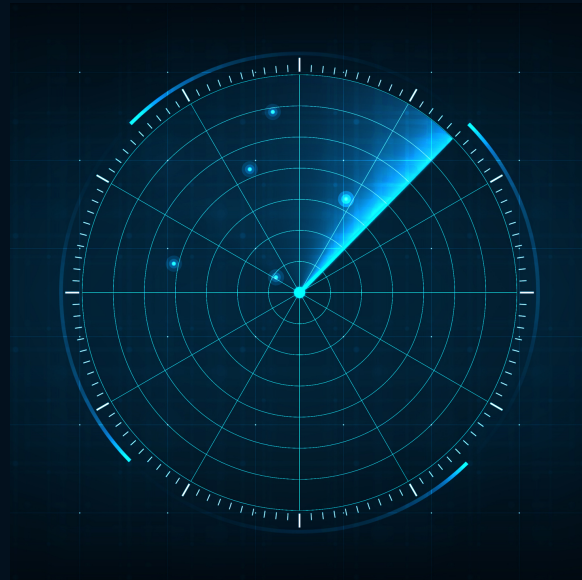
PRICE

\$10,000.00

ANNUALLY PER USER

SUBSCRIPTION FEATURES

Explore data and perform spatial, statistical, predictive, and link analyses. You can use Galahad to fuse location analytics with open data science and business intelligence workflows. Analysts of all skill levels will find the Galahad subscription a good match for their job responsibilities.



Transform your data into web maps that answer questions and encourage exploration using ArcGIS Online powered in QP's IL4 (FOUO), IL5 (NIPR), CJIS Compliant Cloud Environment. The Galahad subscription gives you the ability to collaboratively build maps and applications, perform spatial analysis, collect data, and share your story. You can also use a variety of powerful apps. GIS specialists, asset managers, and data journalists are likely to find the Galahad subscription a good fit for their job responsibilities.

IMPROVE ACCURACY AND PROVIDE CURRENT AUTHORITATIVE INFORMATION.

Galahad allows you to edit and add spatial data in your Cerebra Gray private group. Data quality engineers, GIS technicians, and data entry clerks are likely to find the Galahad subscription a good match for their job responsibilities.



IMPROVE EFFICIENCY AND ACCURACY IN FIELD ACTIVITIES.

Galahad allows you to use apps for real-time data collection, tasking, and operations. Field technicians, maintenance supervisors, or volunteers are likely to find the Galahad subscription a good match for their job responsibilities.



TELL REMARKABLE STORIES WITH CUSTOM MAPS THAT INFORM AND INSPIRE.

With the Story-Teller capability of the Galahad subscription, you can create express maps or build stories with content from your Cerebra Grey private group. Marketers, communications coordinators, journalists, and public relations managers are likely to find the Galahad subscription a good match for their job responsibilities.

- **CREATE WEB MAPS** - Build interactive maps that explain your data and encourage users to explore the data. Use smart mapping to guide your data exploration and visualization.
- **ANALYZE DATA TO UNDERSTAND TRENDS** - Understand your data in the context of location by using intuitive analysis tools. Reveal relationships, identify prime locations, use optimal routes, and analyze patterns to make predictions.





- **SHARE MAPS WITH YOUR TEAM** - Easily create web applications with your maps for a focused, interactive experience.

- **ACCESS AUTHORITATIVE DATA TO ACCELERATE YOUR WORK AND EXPAND ANALYSIS** - Enhance your maps with ArcGIS Living Atlas of the World, the foremost collection of geographic information from around the globe. Access basemaps and integrate data from authoritative sources.

- **COLLABORATE WITH COLLEAGUES** - Work effectively across your organization, in teams of any size, building and using maps. Users receive secure, straightforward access to the data, maps, and applications they need to do their work.

- **CREATE AND MANAGE 2D AND 3D LOCATION DATA** - Bring data from many sources into Cerebra Grey, which hosts and maintains it for you. Data collection is streamlined using collection parameters and field apps. Update your data without disrupting the maps that visualize it.





PRODUCT 3

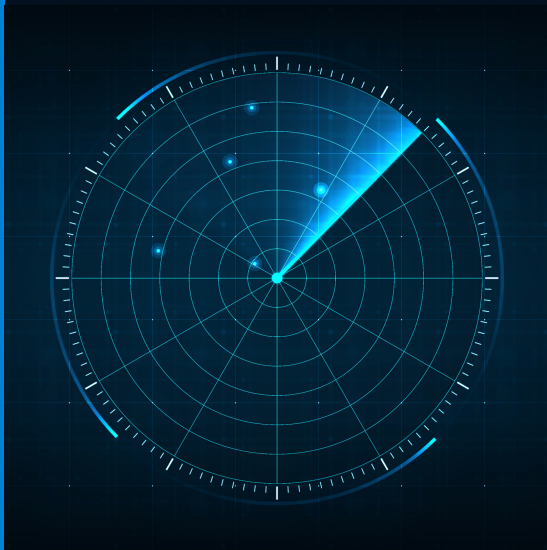
OLYMPIC

12 Month Subscription

PRICE

\$14,000.00

ANNUALLY PER USER



SUBSCRIPTION FEATURES

Olympic is our most powerful and robust subscription. It provides the everything we offer in Galahad and more. We bring you the best tools in a robust and secure IL4/IL5/CJIS capable environment and integrated ESRI Pro Technology. In addition to ArcGIS Pro, the Olympic subscription includes full access to Cerebra Grey, where you can collaboratively build web maps and share them through applications. GIS analysts, geodevelopers, and cartographers are likely to find the Olympic subscription a good match for their job responsibilities.

- Combine data from various sources and formats. ArcGIS Pro supports industry and community standards to ensure inclusion of any dataset you have.
- Display data in 2D and 3D simultaneously. Manage multiple maps and layouts in a single project-based workflow.
- Simplify data editing and analysis with context-sensitive tools. Perform interactive 2D and 3D analysis. Automate work with ModelBuilder or Python.
- Build advanced 2D and 3D maps, visualizations, and analyses using ArcGIS Pro, the professional desktop GIS application.
- Deepen your understanding by applying scientific analytical tools
- Produce advanced maps with your data
- Share maps with your team
- Access authoritative data to accelerate your work and expand analysis
- Perform exploratory, statistical, link, and spatial analyses in one place
- Combine 3D, CAD, imagery, and other data types on a single map