

2020
Community Impact Report



A Letter From Our Foundation President

The A. O. Smith Foundation deeply believes in giving back to our communities. Through our support of non-profit organizations, we are helping improve the quality of life for people living, working and learning in communities where we operate throughout the country.

We are especially grateful for the dedication of the many organizations who are addressing the critical needs of people everywhere during this global pandemic. We have deep respect for each organization's resourcefulness in confronting this healthcare crisis and admire the creative ways in which they have risen to meet the ongoing challenges. We know this unprecedented situation is requiring organizations to change the way they deliver programs, bear unexpected costs, and lose revenue on which they were counting.

Now, more than ever, people in our communities need a helping hand. It has been our pleasure to continue our longstanding support for a broad range of organizations and help foster new relationships to expand our reach even further. Since its founding in 1955, the A. O. Smith Foundation has donated over \$48 million in financial support to an expansive list of community organizations, institutions and programs.

We are proud of these non-profits, who are making a difference in their communities, and committed to helping them remain successful in their efforts. This report highlights some of the organizations working to create strong communities.

Sincerely,

A handwritten signature in black ink that reads "Bruce Smith".

Bruce Smith

President

Our Mission

The A. O. Smith Foundation is committed to making our communities a better place to live and work. We achieve this by partnering with and supporting education, arts and culture, health, and human services in the communities in which we operate. At the same time, the Foundation encourages A. O. Smith employees around the world to live the company's values through volunteerism and community involvement.

Administration

Board of Directors

Bruce M. Smith - *President*

Mark A. Petrarca - *Secretary*

Charles T. Lauber - *Treasurer*

Patricia K. Ackerman - *Assistant Treasurer*

Roger S. Smith

Kevin J. Wheeler

2020 Contribution Summary

Human Services



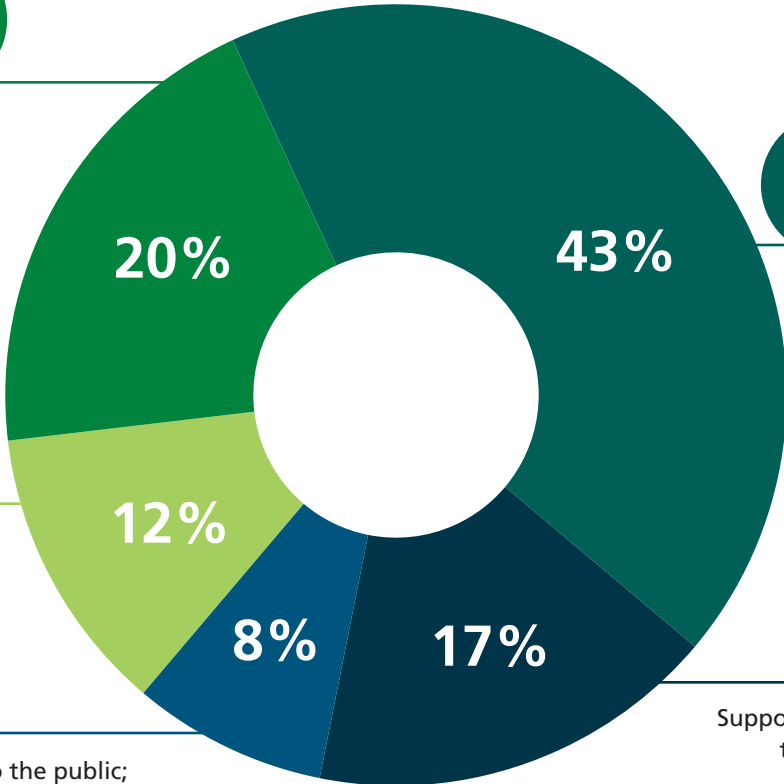
Provides assistance to people to help them stabilize their life and find self-sufficiency through guidance, counseling, treatment and the providing of basic needs.

United Way

Arts & Culture



Brings the performing arts to the public; preserves and commemorates the events, places and cultures that created and continue to shape the nation.



Education

Promotes learning and intellectual development for all ages through a variety of programs.



Health

Supports hospitals, substance abuse treatment programs, diseases, medical research, mental health and crisis services.

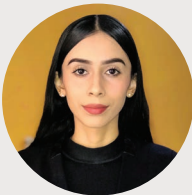
A. O. Smith Corporation Scholarship Program

The A. O. Smith Foundation offers a scholarship program to assist employees' children who plan to continue education in college or vocational-technical school. Renewable scholarships are offered each year for full-time study at an accredited institution of the student's choice.



68 Scholarships Awarded in 2020

20 New Scholarships Awarded	\$36,250
48 Scholarships Renewed	\$84,750
Total awarded in 2020:	\$121,000



"Obtaining this scholarship has been very helpful for my development in school because it gave me the ability to obtain some resources that were necessary to continue learning."

Jeniffer Esparza Frausto - Scholarship Recipient
Daughter of Manuel Esparza Hernandez, Electromechanic Technician

"This scholarship has been invaluable to me and my family in my dream of continuing my education. I continue to push forward in my educational goals and the A. O. Smith scholarship helps make those goals a reality."

Emily Smith - Renewed Scholarship Recipient
Daughter of Bill Smith, Senior Lab Technician



2020 Grant Recipients



\$1.7 million
donated to nonprofit
community organizations



200 nonprofit
organizations funded

Human Services

Agape Nashville
Allen DeShields Organization-Ident-A-Kid
Alliance for Strong Families and Communities
American Red Cross
Ashland City Firefighters Fund
Ashland City Police Department
Backpack Buddies Seabrook Island
Best Buddies Nashville
Bethesda Center for the Homeless
Big Brother Big Sisters of America
BrightStone
Bristol Speedway's Children's Charities
Brooks House
Carolina's Kids, Inc.
CASA Court Appointed Special Advocates
Catholic Charities
Cheatham County Chamber of Commerce
Cheatham County Sheriff's Department
Cheatham County Women's Shelter
Coalition For Kids
COTS Committee on the Shelterless
Cumberland River Challenge
Darlington County Sheriff's Office
Dawn of Hope Foundation
Discalced Carmelista's Monastery
Empower Me Day Camp
Fraternal Order of Police Lodge #81
Good Samaritan Ministries
Grand River Conservation Authority
Habitat for Humanity
Hunger Task Force of Milwaukee
Isaiah 117 House Resource Center
Jericho Shrine Center
Johnson City Firefighters Association
Johnson City Senior Center Foundation
Joseph's Storehouse
Leadership Wilson

Lebanon Wilson Chamber of Commerce
LifePoint Solutions
Loaves and Fishes
Make-A-Wish Foundation
McBee Rescue Squad
Mid-Ohio Foodbank
Milwaukee Rescue Mission
Milwaukee Women Inc.
Mission of Hope
Mustard Seed Ranch
New Leash on Life
Pee Dee Coalition Against Domestic and Sexual Assault
Pegram Fire Department
Pewaukee Lake Water Ski Club, Inc.
Pleasant View Volunteer Fire Department
Prospect Inc.
Riverview Gardens Inc.
Safe & Sound, Inc.
Second Harvest Food Bank of Northeast Tennessee
Serenity Inns, Inc.
Sojourner Family Peace Center
Southern Starrs, Inc.
St. Ann Center for Intergenerational Care
The ARK Meals on Wheels
The Pat Summit Foundation
The Salvation Army
Trent Hill Center for Children and Families
Two Rivers Volunteer Fire Department
Veterans Memorial Park
Waves Inc.
Wilson County Chamber Building Fund
Wilson County Christmas for All
Wilson County Community Help Center
Wilson County Promotions, Inc.
Wisconsin Equal Justice Fund
Youth Leadership Cheatham County

United Way

United Way of Cheatham County
United Way of Chesterfield County
United Way of Fergus
United Way of Greater Milwaukee & Waukesha Counties

United Way of Hartsville
United Way of Johnson City
United Way of Northern Kentucky
United Way of Perth County

Arts & Culture

Friends of Villa Terrace
First Stage
Marcus Performing Arts Center

Milwaukee Art Museum
Milwaukee Symphony Orchestra
United Performing Arts Fund

Education

88Nine Radio Milwaukee
Adventure Science Center
Alverno College
Americans In Wartime Museum
Aquinas Academy
Artists Working in Education
Audio & Braille Literacy Enhancement
Augustana College
Ballyshannon Middle School
Betty Brinn Children's Museum
Books from Birth
Boone County High School
Boy Scouts of America
Boys & Girls Clubs of America
Byers Dowdy Elementary School
Cardinal Stritch University
Carnegie Mellon University
Carroll University
Centro De La Comunidad Unida
Cheatham County School District
Chesterton Academy of Milwaukee
City Forward Collective
COA Youth & Family Centers
College Possible
Columbia Central High School
Communities in Schools
Concordia University Wisconsin
Cookeville High School
Cooper Middle School
Discovery World Science & Technology Center
Divine Savior Holy Angels High School
Economics Wisconsin
Fairview High School
Fordham Preparatory School
Girl Scouts of Wisconsin Southeast
Goodwill Industries of Southeastern Wisconsin
Hampton High School
Hands on Regional Museum
Hope Christian Schools
Imagination Library
Journey House Inc.
Junior Achievement
Literacy Services of Wisconsin
Long Branch Elementary School
Marquette University High School
McBee Elementary School
McBee High School
Messmer Catholic Schools
Mike Grace Scholarship Fund
Milwaukee Institute of Art & Design
Milwaukee Montessori School
Milwaukee Public Broadcasting Service (PBS)
Milwaukee Public Library Foundation
Milwaukee Public Museum
Milwaukee School of Engineering
Missouri University of Science & Technology
Neighborhood House of Milwaukee
Next Door Foundation
Notre Dame School of Milwaukee
Ohio State University Foundation
Penfield Children's Center
Rees Scholarship Foundation
Regional Center for Advanced Manufacturing
Riveredge Nature Center
Rotary Club of Milwaukee, Inc.
Ryle High School
Schlitz Audubon Nature Center
SecureFutures
Seton Catholic Schools
SHARP Literacy, Inc.
Southside Elementary School
St. Francis Children's Center
St. Joan Antida High School
St. Marcus School
STEM Forward
Teens Grow Greens
Tempo Milwaukee
Tennessee Tech University Foundation
The Water Council
University of Illinois Foundation
University of Wisconsin Eau Claire
University of Wisconsin Foundation
Upper Grand Learning Foundation
UWM Foundation
Water Mission
Williams College
Wisconsin Association of Independent Colleges & Universities
Wisconsin Lutheran College
Wisconsin Lutheran High School
Zoological Society of Milwaukee

Health

Al Menah Shriners
Alzheimer's Association
American Cancer Society
American Heart Association
Arthritis Foundation
Aurora Healthcare Foundation
Ballad Health Foundation
Children's Wisconsin
Clarksville Association Downs Syndrome
Groves Memorial Community Hospital
Juvenile Diabetes Research Foundation
Kids Battle Diabetes Golf Classic
Leukemia and Lymphoma Society
Marathon Kids, Inc.
Medical College of Wisconsin
Mercy Children's Hospital
Muscular Dystrophy Association
National Multiple Sclerosis Society
Pancreatic Cancer Action Network
Ronald McDonald House Charities
Sherry's Run
St. Jude Children's Research Hospital
The Crumley House Brain Injury Rehabilitation Center

Our Charities

The A. O. Smith Foundation is proud to support organizations and institutions that help make our communities a better place to live and work. We're pleased to share a few brief sample stories about the positive impact of the A. O. Smith Foundation and our partners.



Milwaukee Symphony Orchestra



Since its inception in 1959, the Milwaukee Symphony Orchestra (MSO) has found innovative ways to give music a home in Milwaukee. The MSO's standard of excellence extends into the community through various activities and programs, reaching over 40,000 children and their families. The Arts in Community Education (ACE) program, celebrating its 31st year, provides art education across all subjects and disciplines to students when budget cuts eliminate art programs.

"A. O. Smith's support of the MSO has been instrumental in helping us execute on the pivots necessary to create virtual programming both on stage and in classrooms across Milwaukee and Wisconsin," said Tina Itson, Milwaukee Symphony Orchestra director of institutional giving.

Photo Credit: Jonathan Kirn

Brooks House



Brooks House in Lebanon, Tennessee, is on a mission to provide a safe, comfortable environment for women and children seeking shelter and connect them with resources to help change their lives. A nondenominational, faith-based transitional, non-emergency shelter, Brooks House has the capacity to hold up to 28 women and women with children for the duration of 6-12 months.

"A. O. Smith has been such a great supporter throughout the years, and we are grateful for their donations. Because of our donors, we are able to provide women and children a home with the necessary resources to get them on their feet again," said Liz Reese, Brooks House executive director.

Ballad Health



As an integrated healthcare system, Ballad Health is serving their community consisting of 29 counties in Northeast Tennessee, Southwest Virginia, Northwest North Carolina and Southeast Kentucky. The donations from the A. O. Smith Foundation has helped Ballad Health improve the healthcare of those they serve in the Appalachian Highlands region, a region that presents challenges for healthcare.

"Ballad Health Foundation is grateful for the faithful support from A. O. Smith Foundation. Your gifts have helped us ensure that Niswonger Children's Hospital was able to serve over 16,000 children from the Appalachian Highlands region," said Jack Simpson, president, Ballad Health Foundation.

Alverno College Greenhouse



Alverno College is offering students a new opportunity to engage in hands-on learning and explore new career paths by building a greenhouse on its campus located in Milwaukee, Wisconsin. The A. O. Smith Foundation is proud to be a major sponsor of the project, providing funds over a span of five years for initial startup costs as well as maintenance and staff costs. The new 1,400-square-foot facility will open opportunities for women to explore and launch STEM careers and feel empowered to thrive and lead.

"Alverno is proud to empower women and girls to explore and launch STEM careers, and the greenhouse offers a new way for us to engage our students in the experiential learning that is the cornerstone of an Alverno education," said Angela Frey, Ph.D., chair of the STEM program at Alverno College.

Application Process

We encourage organizations requesting financial support from our Foundation to submit materials that help tell the story of their organization. This will allow the Foundation to assess their request holistically because we know organizations are more than just forms and numbers.

There is no standard application form, but we have a few requirements to get you started. Please make inquiries on your organization's official letterhead and include the following:

- Verification of IRS 501(c)(3) tax-exempt status
- Exact name and location of the organization
- Description of the organization, including objectives and purpose
- Geographic area served by the organization
- Explanation of the activity for which support is requested
- Description of benefits to be achieved and who will receive benefits
- Amount of support being requested
- Budget information, including funding sources
- Plans for reporting results
- Any brochures, pamphlets or other material that describes your organization in greater detail

(The bylaws of A. O. Smith Foundation prohibit contributions to politically active organizations or any other organization whose chief purpose is to influence legislation.)

Please send application inquiries to:

Rita Schwalbach

Foundation Manager

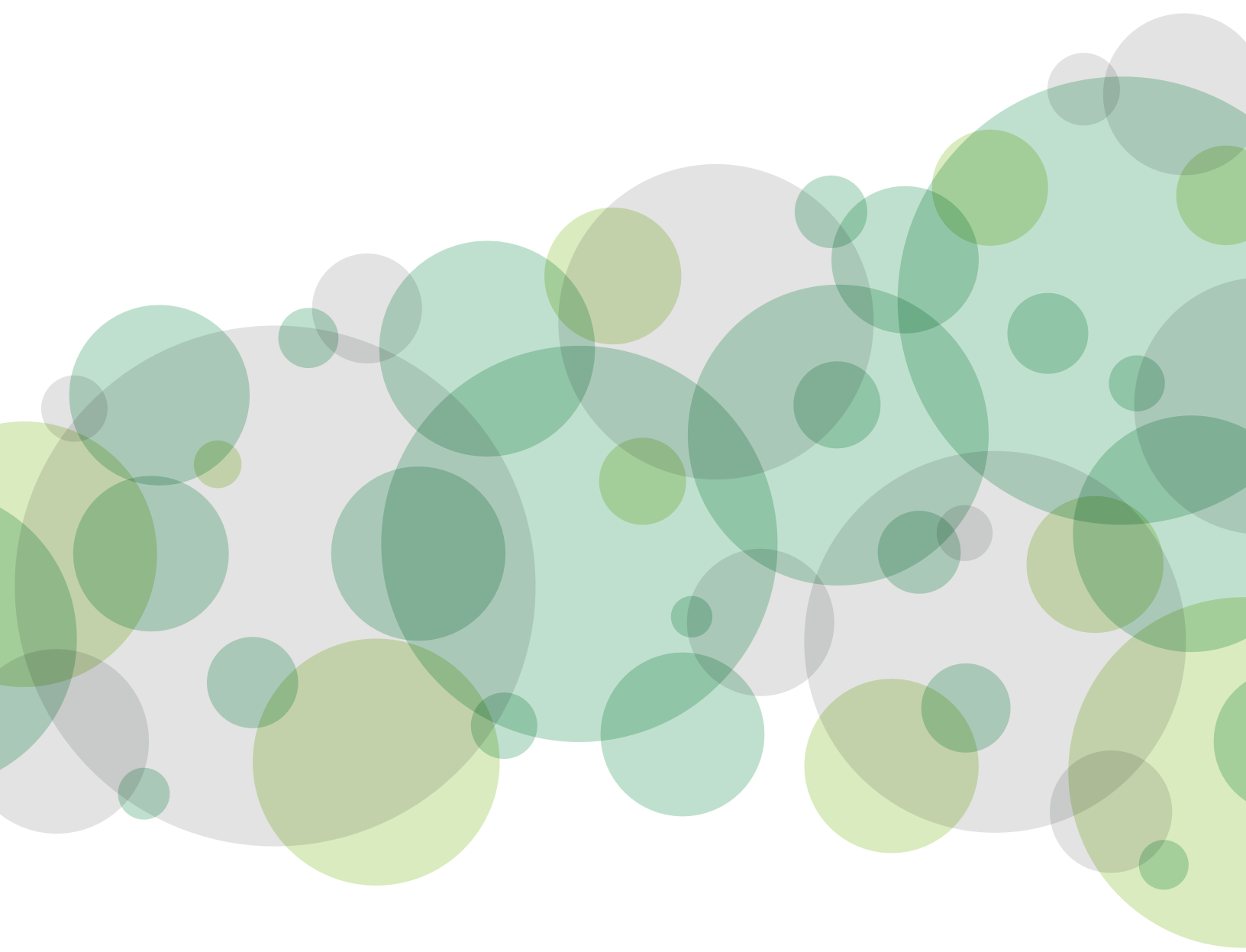
A. O. Smith Foundation, Inc.

P. O. Box 245008

Milwaukee, WI 53224-9508

rschwalbach@aosmith.com





A. O. Smith Foundation
P. O. Box 245008
Milwaukee, WI 53224-9508
www.aosmith.com/Foundation

Copyright © 2021 A. O. Smith Corporation. All Rights Reserved.

