

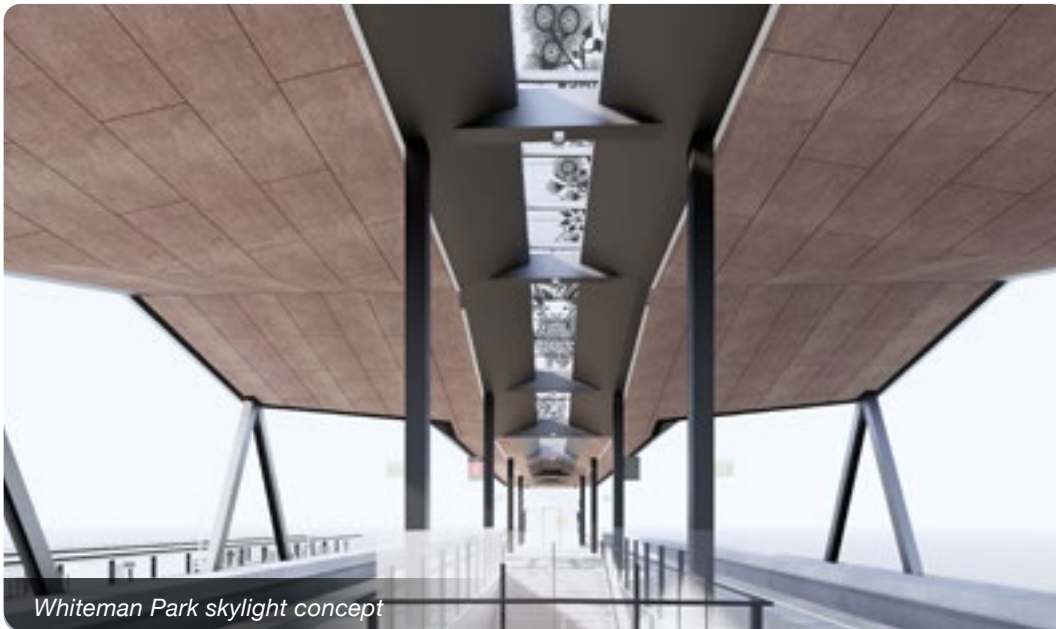
Morley-Ellenbrook Line Public Art

Twelve local and Noongar artists will create 19 public art pieces across 5 new stations on the METRONET Morley-Ellenbrook Line, making it the largest art collection commissioned on a METRONET project to date.

Delivered under the METRONET Public Art Strategy, the artworks reflect and celebrate the unique environment of each station, as well as Noongar culture and connection to

Country, with the aim of making each station a welcoming area for local communities while supporting opportunities for emerging and established artists.

The 21km METRONET Morley-Ellenbrook Line is Perth's largest public transport project since the Mandurah Line and will give people living and working in Perth's north-eastern suburbs more transport choice.



Whiteman Park skylight concept

Station skylights

A series of graphically overlaid glass skylights will feature at each of the five stations. Created by Whadjuk, Ballardong and Yamatji artist **Marcia McGuire** and award-winning Australian designer **Penelope Forlano**, the works share and honour concepts of Aboriginal and non-Aboriginal beliefs and are unique to each station.



Ellenbrook Station



Whiteman Park Station



Malaga Station



Noranda Station



Morley Station

Ellenbrook Station

Screens

Metal arbour screens will welcome visitors and passengers to Ellenbrook Station representing it as a 'place of looking' for the Whadjuk Noongar people. The works feature the circle stump of the Balga (grass tree), gum tree leaves and peppermint trees – all linked to traditional smoking ceremonies.

Artwork by **Marcia McGuire**



Patterned screens set to be located along sections of the platform represent the movement of people through changing landscapes, paying respect to the natural environment, and acknowledging traditional custodianship of the Whadjuk Noongar people.

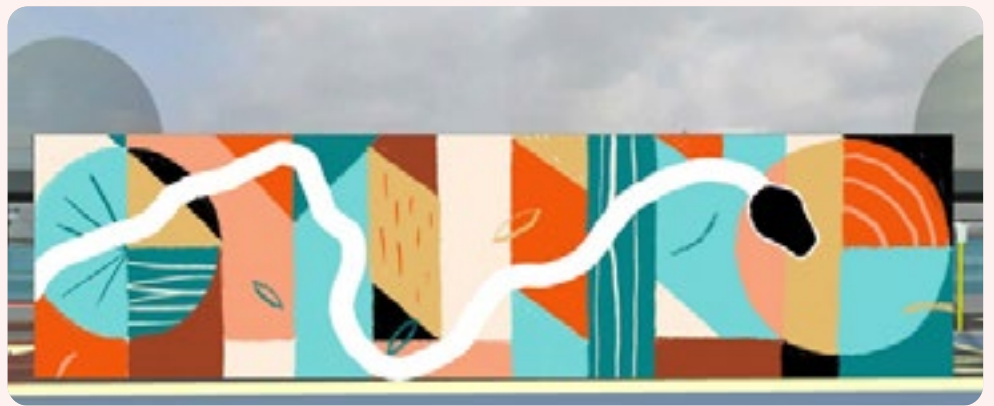
Artwork by **Kambarni**



Bidi mural

A bright, bold mural will surround the station's electrical building, representing the Karla Nara Gyinning Bidi (Ellenbrook train track). Bidis represent the seasonal movements of animals and people. With a colour palette inspired by fire and landscape, the painting will feature the rainbow serpent from Aboriginal Dreamtime stories, Bennett Brook, native animals and plants and fire.

Artwork by **Nathan Corunna** and **Darren Hutchens**



Noranda Station

Facade screens

Feature screens at Noranda Station will use abstract and bold shapes to celebrate the area's New Holland Honey Eater, Flooded Gum and Moonah trees. The distinctive and contemporary graphics will adorn the station entrance and pedestrian concourse across Tonkin Highway.

Artwork by **Kyle Hughes-Odgers**



Underpass mural

Colourful banksia and wetland-themed murals will reflect the native flora and fauna of nearby Lightning Swamp. The curved lines represent connection of journeys and direction and dashed lines represent the flight paths of the pollinators.

Artwork by **Melski + Lilsiski**



Whiteman Park Station

Entry mural

The entry mural will transform the walls around the station entrance with three giant wedge-tailed eagles in flight and abstract swamp and stout paperbark leaves and flowers. The iconic WA bird of prey is a native species of Whiteman Park.

Artwork by **Jack Bromell**



Marker sculptures

Two clusters of sculptural freshwater mussels will feature in landscaping around Whiteman Park Station. The mussels are linked to the well-known nearby Mussel Pool and the Carter's Freshwater Mussel found in nearby wetlands.

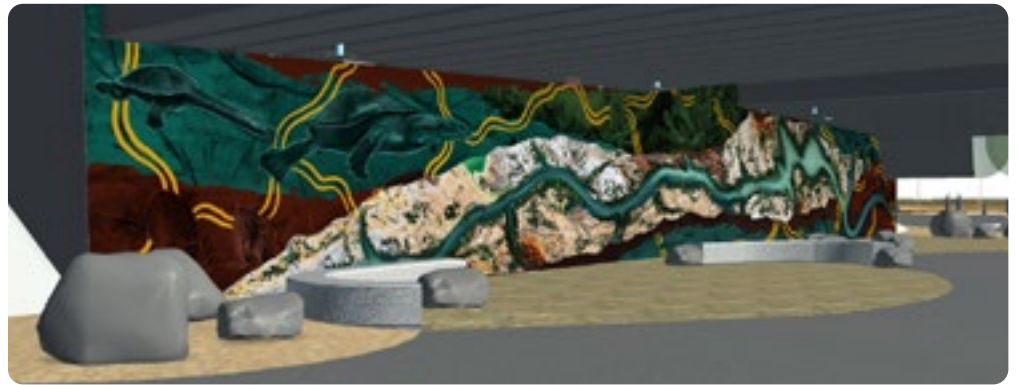
Artwork by **Pip Kelly**



Underpass mural

With images emphasising the ecological and cultural importance of groundwater, this mural will brighten the Drumpellier Drive pedestrian underpass with representation of Bennett Brook stream, traditional Aboriginal pathways and Whiteman Park's native flora and fauna.

Collaborative artwork by **Rohin Kickett** and **Haylee Fieldes (Fieldy)**



Malaga Station

Arrival sculptures

Four unique sculptural artworks will be positioned in pairs to reflect how Noongar people and families travelled together on Country in search of food and water sources. The sculptures will be illuminated at night and the colours will reflect the importance of fire (kaarl) and water (kiep) with engravings on the figures telling stories from the past.

Artwork by **Peter Farmer** and **Jason Hirst**



Concourse and facade screens

Perforated screens will be located on the concourse of Malaga Station. The circle at the centre represents Malaga as a place of trading, of many tools (digging sticks), accessories (bags, cloaks) and weapons (shields, spears) which were used for fishing, hunting, daily life and more. The lines connecting to the inner circle represent the flow of incoming and outgoing trades.

Artwork by **Marcia McGuire**



Screens on the Malaga Station facade draw inspiration from the banksia trees around the station and surrounding Bennett Brook – reinforcing a sense of place and discovery.

Artwork by **Mark Datodi**



Morley Station

Arrival statement pieces

Three site-specific statement pieces have been created for Morley Station to form a bold arrival statement. The blade wall, perforated screens and balustrade will represent Morley's historical significance while acknowledging the new space of the train station.

Artwork by **Haylee Fieldes (Fieldey)**



Artist impression of Morley Station featuring blade wall and perforated screens

The Artists



Self-taught mural artist **Jack Bromell** applies his intricate, illustrative style to public art, inspired by native flora and fauna, feelings and dreams.



Nathan Corunna is an emerging Noongar artist and storyteller who shares his culture through public art and paintings of animals connected to Country.



Darren Hutchens is an experienced mural artist whose unique style and use of colour transforms dull areas into awe inspiring artworks.



Mark Datodi is a Perth-based visual artist whose work is inspired by the natural and built environment and reflected in a simple, poetic and pared-back style.



Peter Farmer and Jason Hirst

Award-winning and internationally-renowned Noongar artist Peter Farmer creates works which are highly significant to the heritage of their sites. Designer and artist Jason Hirst focuses on creating works that live harmoniously in their new surroundings.



Local artist **Haylee Fieldes (Fieldey)** creates bright and colourful murals using geometric and stylised shapes to tell stories of communities and place.



International-award winning designer and public artist **Penelope Forlano's** works explore the possibilities of mass repetition and evoke rhythm, movement, and abundance.



Kyle Hughes-Odgers is a Western Australian artist whose work is inspired by nature and human behaviour. In addition to exhibited works, Kyle has created large scale public artwork in 12 countries.



Whadjuk, Ballardong, Yued Noongar and Badimia Yamatji artist **Marcia McGuire** focuses on painting and digital art to express every day Aboriginal culture. She has devoted herself to learning and exploring Aboriginal and popular modern art.



Kambarni is a prolific artist, designer, multimedia artist and illustrator who reflects the natural world with his intricate and graphic interpretations of pre and post-colonial Australian histories.



Pip Kelly is a Western Australian filmmaker and artist. Guided by a passion for storytelling she explores micro stories within nature and its interconnectedness with people and the universe.



Rohin Kickett is a Noongar artist from the Ballardong region whose works are inspired by his family's stories of strength and survival.



Sisters Mel McVee and Tash Alibegovic (**Melski + Lilsiski**) create works that celebrate what is locally beautiful and quintessentially Australian, playing with lines and connection.

MORE INFORMATION

9326 3666

metronet.wa.gov.au

info@metronet.wa.gov.au

@metronetperth



METRONET