

# Boeing Field International

Aircraft Hangars for Sale

7757

**QUAD 7**

7747 & 7757 Perimeter Road South  
Seattle, Washington 98108

FOR MORE INFORMATION CONTACT:

**Katrin Gist** +1 206 292 6046 | [katrin.gist@cbre.com](mailto:katrin.gist@cbre.com) | [www.cbre.com/katrin.gist](http://www.cbre.com/katrin.gist)



Example of completed hangar

## EXTRAORDINARY OPPORTUNITY TO OWN THE NEWEST CORPORATE AIRCRAFT HANGARS AT BOEING FIELD

The site is ideal for private aircraft owners and aviation-related businesses.

Anyone who has researched developing their own hangars at Boeing Field knows that vacant land is scarce and the development process can easily take over five years. These world-class hangars have over 33 years remaining on the airport ground lease—an opportunity not to be missed.

For private aircraft owners looking to own, these hangars could also offer an opportunity for subleasing any unused space. The market rate for leasing out 10,000 square feet of new hangar space at Boeing Field could be upwards of \$20,000–25,000 per month.



Hangar H1: 7757 Perimeter Rd South | Hangar H2: 7747 Perimeter Rd South

### H-1 SPACE \$4.85 million

FOOTPRINT ±18,557 SF

HANGAR DECK ±14,909 SF

PARKING 21 Stalls

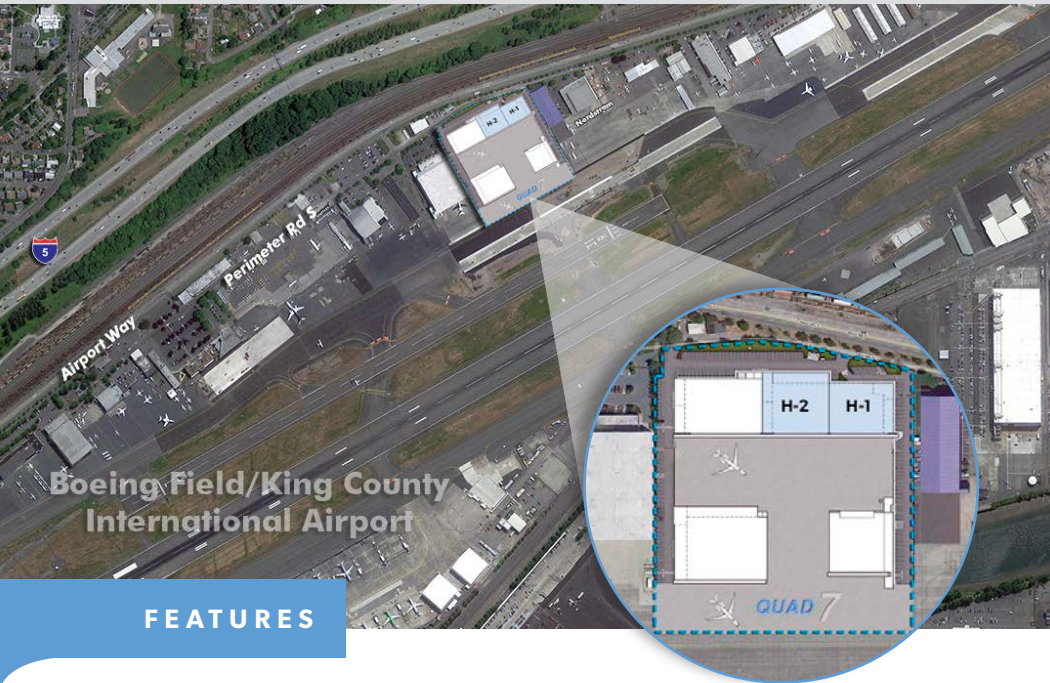
### H-2 SPACE \$5.15 million

FOOTPRINT ±19,787 SF

HANGAR DECK ±16,307 SF

PARKING 23 Stalls (13 covered)

# QUAD 7



Hangar H1



Hangar H2

## FEATURES

Hangars H-1 and H-2 have been completed in 'warm-shell' condition, which includes the floor slab, perimeter walls, fire protection, and utility stubs. Buyers will be able to customize the hangars to fit their specific needs. The dimensions offer plenty of space to house a combination of aircraft storage scenarios. The Quad7 development has its own de-icing pad available to tenants.

- Hangars are fully sprinklered with a two-hour rated separation between them
- H-1 has 21 and H-2 has 28 5' x 6' double-domed skylights, allowing natural lighting into the hangar floor area
- Each of the five hangar door leafs at both facilities integrate glazing to allow additional natural lighting
- Hangar door height – 28-ft maximum
- Hangar door opening – 123-ft clear
- H-1 allows for 2,400 sq. ft. of office space; H-2 allows 4,500 sq. ft. of office maximum without a variance
- Site and hangar designs feature sustainable design practices

### HANGAR H-1



### HANGAR H-2





**FOR MORE INFORMATION CONTACT:**

**Katrin Gist**

+1 206 292 6046

[katrin.gist@cbre.com](mailto:katrin.gist@cbre.com)

[www.cbre.com/katrin.gist](http://www.cbre.com/katrin.gist)

**CBRE**

© 2013 CBRE, Inc. This information has been obtained from sources believed reliable. We have not verified it and make no guarantee, warranty or representation about it. Any projections, opinions, assumptions or estimates used are for example only and do not represent the current or future performance of the property. You and your advisors should conduct a careful, independent investigation of the property to determine to your satisfaction the suitability of the property for your needs. CBRE and the CBRE logo are service marks of CBRE, Inc. and/or its affiliated or related companies in the United States and other countries. All other marks displayed on this document are the property of their respective owners. Photos herein are the property of their respective owners and use of these images without the express written content of the owner is prohibited. cjm 11-27-13